

THE LYMINGE NEWSLETTER

For the communities of
LYMINGE, ETCHINGHILL, RHODES MINNIS and POSTLING

Produced by THE LYMINGE ASSOCIATION | www.lyminge.org.uk

From The Lyminge Association

NOVEMBER 2025



**SWITCHING ON OF THE
CHRISTMAS TREE LIGHTS**

As in the past couple of years, the switching on of the **Christmas tree lights** will be carried out by Santa outside the library in the car park on

**Thursday 27th
November**

Adults and children (with torches) are encouraged to arrive at 4:40pm (no earlier please). This year, we again, have The Lyminge Primary Stage Stars to lead the carol singing prior to the switching on of the lights by Santa at 5pm.

We look to provide the customary mince pies, mulled wine and soft drinks.

The BIG FAT CHRISTMAS QUIZ

Saturday 6th December 7pm.

ETCHINGHILL VILLAGE HALL

Max 6 per table, £5 per person.

Price includes cake, crackers and a quiz.

Prizes for the winning team. Plus raffle. Bring your own refreshments.

Reserve your table by phoning 07514 758936



THE FUN WAY TO GET YOUR CHRISTMAS STARTED.

Reviews 2024

*TOP TEN FINISH, WHAT A RESULT ~ DIDN'T WIN BUT I PULLED A CRACKER
SHOULD HAVE CHRISTMAS QUIZ MORE OFTEN! ~ EVEN MY HUSBAND ENJOYED IT ~ I LEARNT SO MUCH!!*

Any profits will go to the Etchinghill Village Hall. Charity no 302732

Margaret Saunders' Meanderings

The following are some observations made on my meanderings in the last week of September from around St Mawes in Cornwall.

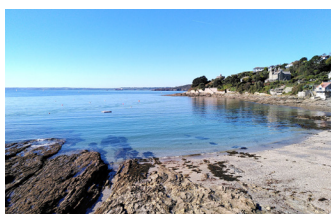
St Mawes is a small picturesque harbour and village on the Roseland Peninsular in Cornwall on the east bank of the Carrick Roads, opposite Falmouth, The peninsular has an island-like quality as access is either by a local ferry from Falmouth, the King Harry Ferry – a chain operated ferry which crosses the River Fal as it leads up to Truro - or there is a winding road link from Truro. It is situated on the south side of Cornwall and from our holiday cottage, immediately above the Henrician castle of St Mawes, there is a 180° view of the sea facing south.

Falmouth is the third largest deep natural harbour in the world and is sited at the mouth of the River Fal which is a busy port. Every day there are numerous vessels that ply to and fro, which are fascinating to watch: small and large yachts, including schooners; one man fishing boats which stay in the bay; larger fishing boats which disappear around the headland; tugs; cruise liners; RNLI boat; pilot and speed boats; Border Agency craft and slim rowing boats with three rowers. All day long their white wakes cut across the blue of the sea. Large container ships make their way slowly along the distant horizon.

2

Each day apart from one there is wall-to-wall sunshine, giving a Mediterranean feel. Fiery reds and oranges usher in the dawns across the still waters of the harbour, where a myriad of yachts and buoys begin to catch the early light. Crimson and apricot fill the sunset sky towards Falmouth as the day draws to its quiet close, tall pines forming majestic silhouettes in the foreground. Dark headlands stretch out in the background, their long rocky fingers reaching out into the depths of the sea. In this magical time of twilight, acrobatic bats flit backwards and forwards past the window on their ceaseless search for insects. Once the night is fully descended, the half moon appears poised above the bay, sending its silvered beam shimmering across the water, where currents and the breeze shift its path from side to side and ripples give it the texture of hammered pewter. Buoy lights flash out their designated patterns in red, green or white while moving lights mark the passage of returning vessels. Inky blackness is all around and in the silence of the night, a tawny owl hoots its distinctive call.

Towan is a south-east facing beach of sand and small patches of gritty shingle, with rock pools exposed



at low tide. It is afternoon and the tide is on the turn, slowly creeping up the smooth golden sands, bubbling over the rocks, refilling the many rock pools. The sea is a deep cerulean blue, meeting the horizon in a crisp line, the sky above a paler blue. Small waves break into sparkling white foam creating a gentle susurrantion – there is no forwards and backwards drag of shingle as is heard on our local beaches.

Small birds peck into the sand at the water's edge where gentle waves push arcs of water over the flat sand. Clumps of seaweed move to and fro, suspended in the sea's slow swell whilst other clumps are nudged up the beach as the incoming tide reclaims the shoreline, wiping all human evidence away, ready for a fresh start in a few hours' time.

Patterns abound: foot and dog prints, striations on rocks, small stones, seaweed draped over rocks, white squiggles and limpets on rock surfaces. Bright pink seaweed floats gracefully in a rock pool while reflections of light through the water make constant and ever-changing patterns on the sandy bottom. As the sand relinquishes the water from the last high tide, miniature river systems cut through as the water drains, carving out curves where small stones are deposited on the slow-moving inner bends, the outer ones swept clean. To landward, strata of rocks rise out of the sand like mini mountains in a desert of pale gold, whilst bare thick seaweed stalks stand straight and tall, resembling the shell-shattered trees left standing on the desolate First World War battlefields, where whole woods were stripped of all vegetation leaving a landscape reminiscent of Armageddon.

The afternoon begins to turn to evening and I am back on the headland looking out over a wide stretch of sea. Both sea and sky are now a pale grey – the sky smooth, the sea rippled. St Anthony's lighthouse, painted a pristine white, begins to reveal its light and below, around its headland, wind and currents cause the water to fan out in a lighter shade of silver grey swirling around the rocks that necessitate the lighthouse.

All is velvet black, apart from the lighthouse, buoys and returning boats each sending a shimmering shaft of light across the black sea. The stars light up one by one, announcing that night is finally here. Another perfect day has ended and nature needs to rest.

Church Services

Valley Methodist Church

A warm welcome awaits you at our services followed by a time of refreshment and fellowship in our Lyminge Church or at our small and beautiful Chapel at Rhodes Minnis. Please note that times and venues may vary.

LYMINGE		
Date	Time	Event
2nd November	10.15am	Valley Service at Rhodes Minnis
9th November	10.45am	Remembrance Service at War Memorial followed by service in the Methodist Church led by Rev Malcolm Peach
16th November	11.00am	Mr Dwight Harris
19th November	7.00pm	Praise and Worship
23rd November	10.15am	Valley Service led by Rev. Gill Songer
30th November	11.00am	Mrs Lisa Cooper

Advent Course – Tuesdays from 2- 3pm in Lyminge Methodist Church from the 25th November. All are welcome!

RHODES MINNIS		
Date	Time	Event
2nd November	10.15am	Valley Service at Rhodes Minnis with Rev Malcolm Peach inc. Holy Communion
9th November	11.00am	United Service at Lyminge
16th November	9.30am	Dwight Harris
23rd November	10.15am	Valley Service at Lyminge Rev Gill Songer inc Holy Communion
30th November	9.30am	A local arrangement

St Mary and St Ethelburga Parish Church, Lyminge

Date	Location	Time	Event
Saturday 1st November <i>All Saints Day</i>	Stanford	3.00pm	All Saints Day Service
Sunday 2nd November <i>All Souls Day</i>	Lyminge	10.00am	WOW Service
	Elham	3.00pm	All Souls Memorial Service
	Paddlesworth	4.00pm	Evensong BCP
Sunday 9th November <i>Remembrance Sunday</i>	Lyminge	10.45am	Remembrance ceremony – War Memorial. Followed by joint service in Methodist Church
		6.00pm	Choral Evensong
Tuesday 11th November	Paddlesworth	10.45am	Remembrance Service
	Lyminge	10.50am	School Remembrance Event
Sunday 16th November	Lyminge	10.00am	Holy Communion CW1
	Paddlesworth	4.00pm	Evensong BCP
Sunday 23rd November	Paddlesworth		No service
	Lyminge	10.00am	Family Praise
Thursday 27th November	Lyminge	9.00am	Lyminge Prayers
Sunday 30th November <i>Advent Sunday</i>	Swingfield	10.00am	Benefice Advent Service

If more information is required please contact the Church Wardens, Derek Smith 01303 862508 or Mike Chinneck 01303 863911

Postling Church Services

Date	Time	Event
2nd November		No Service in Postling
9th November	10.50am	Act off Remembrance at Stanford war memorial
16th November	8.30am	Holy Communion
23rd November		No Service in Postling
30th November		No Service in Postling



Rector's Wonderings..

I wonder if you've ever passed a quick judgement on someone without knowing the whole story?

We can sometimes unfairly judge others who we know very little about, based on gossip.

Proverbs in the Bible says: "The words of a gossip are like choice morsels; they go down to a man's inmost parts." (Proverbs 18:8). When we listen to gossip, it goes to our "inmost parts." Gossip sinks its teeth into our hearts, souls, and minds and corrupts us like a fast spreading cancer.

Gossip is always trouble. Gossip obscures the truth. Gossip drives us from God. Gossip ruins reputations. Gossip destroys relationships. Gossip divides churches. Gossip is incredibly destructive.

Rather than tearing people down, we should build them up!

How do we do that? Well, one of the ways we do that is through encouragement.

Proverbs 12:25 says: "Anxiety in a person's heart weighs it down, but a good word cheers it up."

Don't weigh down someone's heart by giving them something to be anxious about through your gossiping. Instead, cheer up someone's heart by giving them a good word.

Challenge yourself this month in this one way: Make a pledge to encourage rather than gossip. Can you imagine how wonderful it would be if all the gossip in our community turned into encouragement? Ask yourself these questions (attributed to Socrates):

Is it true? Is it necessary? Is it kind? Let that be your guide. Here's another tip: If in doubt, don't say it.

Dear Lord, Set a guard over my mouth; keep watch over the door of my lips. Help me to be an encourager by speaking a good word." Amen (Psalm 141:3)





Merry Christmas

And Happy New Year

To our wonderful supporters – thank you. Every donation, big or small – food or funds – has helped us through our busiest year yet.

Thanks to you, we can keep caring for the animals who need us most.

Wishing your a joyful festive season –
From all at Lord Whisky

01303 862622 – lord.whisky@btinternet.com

Fifth Trust update



the fifth trust

supporting adults with learning disabilities
www.fifthtrust.co.uk

Our **Christmas Craft Fair** returns on Saturday 6 December, 10am–3pm, at Elham Valley Vineyard. Discover unique, handcrafted gifts made by our talented students – from festive cards and gift wrap to ceramics, woodwork, jams, chutneys, and more. Enjoy delicious BBQ food, mince pies, mulled wine, and tastings of Elham Valley Vineyard wines. You can also pick up festive plants and wreaths from our Vineyard Garden Centre.

Christmas Lunch at the Vineyard Café Monday 24 November - Thursday 18 December. Enjoy two courses for £25 or three for £30. To book, please call 01227 831266 or email cafe@fifthtrust.co.uk. A £10 deposit per person is required, and all orders must be confirmed in advance.

4



Thank you for making our Coffee Morning special

Together, we raised a fabulous

£300.00

At

Lyminge Library




Christmas Present Delivery Service

It goes without saying that the ever popular Christmas Present Delivery Service will also take place again this year on Monday 22nd December. Santa and his elves will be in attendance to give that special bit of excitement, and lighting up the faces of young children.

Further details will be available in next month's edition of the Newsletter. Any presents for children, adults and even pets, can be delivered by Santa for a small charge of £2 per address.

LYMINGE BOWLS CLUB

WOODLAND ROAD
ENTRANCE NEXT TO THE TENNIS COURT

Cake & Coffee

SATURDAY 6TH DECEMBER
10AM TO 2PM




CHRISTMAS DECORATIONS, PRESENTS AND CARDS FOR SALE

Diary of Forthcoming Events

This page is printed to give readers and organisers the opportunity of planning events without clashing with existing ones, which are already in the 'diary'. It is not intended as a means of advertising and we take no responsibility for errors or omissions. Acceptance is at the discretion of the editor. Please send your updates by email to pbarnes20@icloud.com or via methods outlined on Page 3.

ONE-OFF EVENTS

Date	Time	Event	Where	Tel no
15-16th Nov	10am	Festive Craft Fayre	EVL	
19th Nov	7pm	Praise and Worship	LMC	
22-23rd Nov	10am	Festive Craft Fayre	EVL	
22nd Nov		Christmas Fair - Pilgrims Hospice	11am	
27 Nov	4.45pm	Lighting Christmas Tree	LL	07808775302
29th Nov	10am	Christmas Fair	RMCS	
30 Nov	4.45pm	Etchinghill Christmas Lighting Event	MP	07544 670363
01 Dec - 5 Jan		Mount Pleasant Close Christmas Lights		
5th Dec	7pm	Christmas Concert	LPC	
6th Dec	10am	Cake and Coffee	LBC	
6th Dec	9am	Children's Toys & Clothes Boot Fair	EVH	
6th Dec	7pm	The BIG FAT CHRISTMAS Quiz	EVH	07514758936
07 Dec	7pm	ERA AGM	EVH	07544 670363
13 Dec	10am	Lyminge Winter Arts & Crafts Fair	LVH	
20th Dec	3pm	Haywardians Christmas Concert	LMC	
22th Dec	4pm start	Christmas Present Delivery		
24th Dec	6pm	Christmas Carols	LMC	

MONTHLY EVENTS

Date	Time	Event	Where	Tel no
1st Mon	10am	Stroke Support Group	C&H	07903 150099
2nd Mon	7pm	Parish Council Meeting	LVH	07999 403948
3rd Mon	10am	Stroke Support Group	C&H	07715 221705
3rd Mon	7pm	Etchinghill Cinema Club	EVH	07544 670363
1st Tues	2pm	RBL, Elham Valley Branch	SMCHE	07734 383691
1st Tues	2pm	Railway Readers 1	LL	0300 0413 131
1st Tues ³	7.30pm	LHS Talk/Event	TC	863879
2nd Tues	2.30pm	Library Reading Group	LL	0300 0413 131
3rd Tues ²	7.30pm	Gardeners' Society	TC	07703 149008
Last Tues	10.30pm	Lyminge Poetry Group	LL	0300 0413 131
1st Wed	10.30am	Lyminge Friends	TC	07904157897
4th Wed	2.30pm	RM Circle	RVH	864256
Last Wed	7.30pm	Quiz Night	C&H	01303 3901011
2nd Sat	10am	Postling Church, Coffee Morning	PC	863536
2nd Sat	10am	Ethelburga Quilters	EVH	
4th Sun	9.30am	Farmers' Market	LVH	

WEEKLY EVENTS

Day	Time	Event	Where	Tel no
Mon	10am	Bridge Club	LBC	863177
Mon	10.30am	Lyminge Larks (Singing)	LMC	07951 572920
Mon	10.30am	Chromatic Greys Art Class	EVH	07783 575802
Mon	5.15pm	Pilates	EVH	07951 698008
Mon	6.30pm	Ballroom/Latin/Salsa Dancing	TC	07966 751991
Mon	6.30pm	Judo Club	LVH	07369 225021
Mon	7pm	Pilates	EVH	07951 698008
Mon	7pm	Yoga	RMV	07977 503897
Tues	9.30am	Tai Chi Qigong	EVH	07402 203239
Tues	10am	Lyminge Baby & Toddler Group	TC	07870 405567
Tues	11.45am	Pilates	EVH	07834 839801
Tues	1pm	Seated Yoga	TC	
Tues	1.45pm	Pickleball	EVH	862696
Tues	6pm	Board Games Night	CC	
Tues	6.45pm	Short Mat Bowls	LVH	863842
Tues	7pm	Bridge Club	EVH	07790 160476
Wed	10am	Pilates	TC	07825 109670
Wed	10am	Baby/Toddler Group	EVH	07817 777975
Wed	11.30am	Singing for all (term time only)	TC/LMC	269602
Wed	7.30pm	Cantores Dominicae Choir	LVH	07778 333339
Thurs	10am	Lyminge Morning Art Group	EVH	01303 211364
Thurs	10.15am	Baby Rhyme Time	LL	0300 0413 131
Thurs	2pm	Lyminge Afternoon Art Group	TC	07870 494644
Thurs	5pm	Pilates	TC	07951 698008
Thurs	6.15pm	Pilates	TC	07951 698008
Thurs	7pm	Short Mat Bowls	LVH	863842
Thurs	7.30pm	Ballroom and Latin Dancing	EVH	07967 979610
Fri	9.15am	Nikki Barratt Art Group	EVH	07871 494644
Fri	10.15am	Talk Time	LL	0300 0413 131
Fri	6pm	Junior Cricket Training Sessions	SPCC	07869 283195
Fri	7pm	Table Tennis	EVH	

¹ In term time only

³ Except Jan, Feb, and trip in Aug

⁵ Not held in August

² Except Jan and Feb

⁴ Except Aug and Dec

** Every three months

C&H: Coach & Horses; **CC:** Coffee Cabin **EGC:** Etchinghill Golf Club; **ERA:** Etchinghill Residents' Association;
ES: Elham Square; **EVH:** Etchinghill Village Hall; **ELVH:** Elham Village Hall; **EVL:** Elham Valley Line Trust; **JF:** Jubilee Field;
LB: Laing Bennett; **LBC:** Bowls Club; **LL:** Library; **LMC:** Lyminge Methodist Church; **LPC:** Lyminge Parish Church;
LPS: Lyminge Primary School; **LVH:** Lyminge Village Hall; **LW:** Lord Whisky; **MP:** Meriden Park **NP:** Nailbourne Court; **PC:** Postling Church;
PH: Lord Whisky, Park House; **PVH:** Postling Village Hall; **RVH:** Rhodes Minnis Village Hall; **RMC:** Rhodes Minnis Church;
RMCS: Rhodes Minnis Cat Sanctuary; **RR:** Rigden Room; **SMCH:** St Mary's Church Hall, Elham;
SMVH: Stelling Minnis Village Hall; **SNL:** See Newsletter for info; **SP:** Sibton Park; **SPCC:** Sibton Park Cricket Club; **TC:** Tayne Centre;
TF: Tayne Field; **WF:** Well Field

LYMINGE COMMUNITY HUB

Further to our update in the October edition of this newsletter, we are pleased to be able to advise that we now have an agreed date of 11th November for our second meeting with Jim Martin, Leader of Folkestone & Hythe District Council and his officers. Following the many meetings we have held since February, we have now put together our detailed proposals to create a community hub using the ground floor of the Jubilee Building in Everist Court. We are hoping for a positive outcome from our meeting, as we are acutely aware of the lack of services available in our village and local communities since the departure of AGE UK.

Four members of our committee recently visited the Romney Marsh Community Hub, where we met with Liz Taylor, Chief Executive Officer (CEO). Liz kindly shared details of the support and wide range of activities available at the Hub, which include a day support service where folk can meet with others of a similar age for friendship and for social interaction. The Hub provides a two-course lunchtime meal in their café, with tea, cake and snacks available throughout the day, all of which we also aim to provide if we can set up our proposed Community Hub here in Lyminge. The Rainbow Centre in Romney Marsh has recently set up a new Food Pantry to help those struggling to buy food through a

membership scheme. This has been achieved by working in partnership with the Romney Marsh Community Hub.

Well-being activities on offer are designed to improve physical and mental well-being and include Yoga, Pilates, Fitness and Line Dancing. Arthritis, Cancer and Diabetes Peer Support Groups meet on a monthly basis and enable people who have had or are going through similar experiences to meet together. Quizzes, board games interest groups and art and craft clubs are also on offer and are well supported. Free digital support sessions organised by Kent County Council and Social Enterprise Kent are available once a month and these are very popular with folk wanting to communicate online or who have a device they don't know how to use.

We came away very impressed with the work of the Romney Marsh Community Hub and inspired with ideas for what we should be able to achieve here in Lyminge if we can secure the use of the ground floor of the Jubilee Building.

The support we have already received from residents living in Lyminge and the surrounding villages and hamlets is very much appreciated. If you would like to share your support for our proposed Lyminge Community Hub, please send an email to yd.freeman@mypostoffice.co.uk

Report on The Lyminge Association AGM 16 October 2025

Over 35 people attended a very comfortable AGM in the Lyminge Bowls club house.

The business side was conducted in quick time. The Lyminge Association (LA) recorded a healthy state of their funds (£15391) and had donated £3153 to various bodies during the course of the year.

Adrian Willcox retired from the group after 50+ years and was presented with a token of their appreciation for all he has done. Peter Barnes stood down as chair and Heather Dunford became the new chair. Dennis Huntley joined the committee. It remains for the committee to recruit a minute secretary - not an onerous job supporting a relaxed committee whose aim is to help develop the Lyminge Parish community.

Shaun Pottage and Sue Baldwin (chair and vice chair Lyminge Parish Council, LPC) had accepted an invitation to address the meeting, with both of the LA and LPC looking to foster a complimentary working relationship in the future.

Shaun presented an overview of the parish council. Sue then gave an insight to The Neighbourhood Plan. She hopes that everybody in the parish will have the opportunity to record their views on a range of topics that would influence and impact on the future development in the parish.

TOUCH OF SWING

...are looking for a bass player, interested in playing swing, R and B and general easy listening music. Please contact Roger on 07768 977420 - thank you.

Lyminge Newsletter

TERMS & CONDITIONS: Copy deadline for next edition - 18 November 2025

Please email your copy to the editor at pbarnes20@icloud.com

Your payment must be received before your article or advert can appear in the Newsletter.

Invoices will be issued and should be paid ASAP either by BACs, cheque, credit card or cash (details on invoice).

Business adverts cost from £10 per month or £100 per year.

Personal and charity adverts and articles from £5 per month, or £50.00 per year.

The annual rate offers 12 entries for the price of 10.

Please make cheques payable to **'The Lyminge Association'**. If you do not have email, a typed paper-copy may be left with the payment at the Library. The Newsletter is printed by Canterbury Print & Mail.

The Lyminge Association accepts no liability for the accuracy of the advertisements or subsequent actions arising in conjunction with advertisers in the newsletter.

For further details call Peter Barnes (editor) on 07808 775302 or email pbarnes20@icloud.com

Etchinghill update

– October 2025

ETCHINGHILL RESIDENTS' ASSOCIATION (ERA)

Chairman: David McCombe - 07939 076617

Email: dmccombel@gmail.com

Website: www.etchinghill.info

f Etchinghill Residents

**FILM NIGHT -
ETCHINGHILL VILLAGE HALL
MONDAY 17th NOVEMBER
Doors open at 7.00pm for a
7.30pm start – 'The Critic'
15 - 2023 - Run time 1hr 41 min.**

A Drama/History/Mystery Thriller
Starring Ian McKellen, Alfred
Enoch and Matthew Cottle.

Set against the backdrop of pre-war London in the 1930s, Sir Ian McKellen delivers a masterful performance as the titular critic, a manipulative figure whose sharp tongue and keen insights mask a darker agenda. His character is both compelling and repulsive, drawing viewers into a world where his approval can make or break careers..

Entry fee is only £6 pp and includes a glass of wine, tea or coffee with biscuits on arrival and entry into a free raffle. New members are welcome, simply register and pay on the night, there's no need to book.

PLEASE NOTE - There will not be a film screening in December.

**CHRISTMAS TREE LIGHTS-
ON EVENT! MERIDEN WALK,
MERIDEN PARK, ETCHINGHILL
SUNDAY 30TH NOVEMBER
4.45pm**

Meet by the large Christmas tree at Meriden Walk, where the lights will be switched on at 4.45pm. Afterwards, please walk up to the village hall and join us for complimentary festive food and drink. This year we are delighted, once again, to welcome back the Shepway Brass Academy youth band, who will play seasonal music and accompany our carol singing.

**ERA ANNUAL GENERAL
MEETING
SUNDAY 7TH DECEMBER
ETCHINGHILL VILLAGE HALL
7pm - Doors open 6.45pm**

After the brief formalities, where you can vote for the committee members of your choice going into 2026, you will have the opportunity to air your views and help make a difference and shape the future of our community during the Open Forum.



News contact: Karen Hickman – 07521 372477, email: kdickman@me.com

ETCHINGHILL VILLAGE HALL (Charity 302736)

Chairman: John White

f Etchinghill Village Hall Kent

Bookings: Anna Allan 07514 758936

Email: d.allan142@btinternet.com

DATES FOR YOUR DIARY

CHILDREN'S AND BABY BOOT

FAIR: Saturday 6th December.

Doors open to the public at 9am.

THE BIG FAT CHRISTMAS QUIZ

will be held at Etchinghill Village Hall on Saturday 6th December 7pm. Decorated hall, crackers and mince pies included. If you enjoy Christmas you will enjoy this. Teams of up to 6, £5pp with prizes for the winning team. Bring your favourite nibbles and drinks. To reserve your table phone 07514 758936.

FLY TIPPING

It has been noticed that verges and banks are being used to dispose of residents' garden waste in Teddars Leas Road and Westfield Lane. Please dispose of your garden waste responsibly either by purchasing a Brown Lidded Garden Waste Bin from the council or alternatively by taking it to the Household Refuse Centre. In addition to making the area untidy and encouraging further items to be dumped, this is technically regarded as fly tipping and should be treated as such. However, the cost of removal by the council is then unfairly paid by all through council tax.

7

Childrens Toys and Clothes Indoor Bootfair

Do you need to declutter and make space before Christmas?
Come and sell your old toys and childrens clothes with us.

Saturday 6th December 2025

Tables are available for £7 (£10 for businesses)

We have a limited number of tables available so book with us today to avoid disappointment

Phone :07514 758936

At Etchinghill Village hall
St Mary's Drive Etchinghill CT18 8NQ



Editor: pbarnes20@icloud.com | Tel: 07808 775302

District Councillors' update

– November 2025

The Government is going ahead with its **Local Government Reorganisation** plans. Leaders of councils in Kent and Medway have asked advisors KPMG to look in more detail at two options for unitary councils and the areas they should cover. KPMG's work is being paid for from central government money set aside to deliver local government reorganisation in Kent and Medway. Some councils are funding their own business plans for three alternative options. F&HDC councillors will meet on 19 November to discuss the options and a preferred option will then be agreed ready for submission to Government by 28 November. The final decision will be made during summer 2026.

Following the launch of the canvass for 2025 you will be receiving an email or a paper form to check that your details on the **electoral register** are up to date. Those required to respond will receive email and telephone reminders or a house call in October and November from an electoral canvasser. This is only required every three years so if you aren't notified, please don't worry.

The Green Grant Scheme has been an overwhelming success and has awarded more than 30 grants to community groups, parish councils and schools funding to support sustainability and carbon reduction projects across the district several of which were awarded in North Downs West. The scheme is closed for this year but will be launched again in the next financial year.

The Rural England Prosperity Fund is also open again and available for applications by Community Organisations. See The Folkestone Works website for details.

Contact: Elaine.Martin@folkestone-hythe.gov.uk

Otterpool Park – At the full Council Meeting on 1 October 2025, I put two questions to the Leader of the Council – (1) The three month extension to the collaboration agreement with Homes England with Otterpool Park comes to an end shortly. If there is no commitment or funding from Homes England at the end of this agreement, what is plan B? (2) As the Otterpool Park team has been reduced to 5, and negotiations with Homes England are with the Leader and Chief Executive, what is the role of the Otterpool Park Board? See the answers to these questions on FHDC website under Democracy Cllr questions and answers - Minutes.pdf

Design Code - A survey to provide input and feedback on the design and character of local development has been launched to help identify clear principles for what is built in east Kent. A design code is a planning document that sets out specific requirements for new development, it could include layout, (including street pattern), how landscaping should be approached, including the importance of streets being tree-lined, height of buildings and façade material, environmental performance of places and building, local vernacular and heritage, architecture and materials.

Residents can have their say by completing the survey on the website before midnight on Sunday 9 November 2025.

St Eanswythe - A sculpture depicting St Eanswythe – the patron saint of Folkestone – has been restored (see below). The statue, which sits proudly near the entrance to Radnor Park, was damaged by vandals in June last year. A replacement head was carved using a mould retained by the original artist. Unavoidable delays meant this took longer than expected.

Saint Eanswythe was the granddaughter of King Ethelbert and Queen Bertha. It is believed she founded Folkestone Priory – one of the first Christian communities for women in Britain – around the middle of the 7th century, having chosen the town as her retreat.

Local Government Reorganisation – the District Council will have to choose which model to put forward to Kent Leaders from a single unitary, a three unitary solution, two four unitary arrangements and a five unitary arrangement. The Local Government Reorganisation working group will be meeting on the 17th October. The Leader will be presenting detailed information to all Councillors on 12th November and a decision will be made at an extraordinary meeting of the Council to be held on the 19th November, which then has to be ratified by the Cabinet. There is still time to comment on these models, I am happy to pass on views to the Leader.

Ward Grants – I have supported Lyminge Primary School Stage Stars with £250 for purchase of microphones, £250 to Postling Village Hall to support the installation of solar panels made possible by the Rural Prosperity Grant and the Monks Horton Community £500 for cushion pews and a mobile sink unit.

Contact: jennyhollingsbee@folkestone-hythe.gov.uk



ETCHINGHILL RESIDENTS' ASSOCIATION Film Night

MONDAY 17th November

"The Critic"

15 (2023) - Run Time: 1hr 41mins

Etchinghill Village Hall
7 for 7.30pm

Entrance Fee £6pp

Open to new and existing members
Free Refreshments and Raffle



www.etchinghill.info

The **Methodist** Church 
VALLEY METHODIST CHURCH, LYMINGE

Praise & Worship

WEDNESDAY EVENING SERVICES AT 7PM

ON:
24 SEPTEMBER
22 OCTOBER
19 NOVEMBER

ALL ARE WELCOME



This Newsletter can be viewed online and in colour at www.lyminge.org.uk/newsletter

9

 **Ellen Garrard**
counselling, supervision, mindfulness

Autumn Meditation Course BOOKING NOW

8 sessions from Saturday 4 October 2025

(1 per week)

1.30pm - 4pm

Location: Harry Margary Hall
Lympe Village
CT21 4LE

Learn some new skills to support your
health and wellbeing

Contact Ellen for more information or to book

Call: 07740 857109

Email: ejgarrard2712@gmail.com

Visit: www.ellengarrard.co.uk



Footprints

Children's Musculoskeletal &
Orthopaedic Physiotherapy


**I am an Advanced Practice
Children's Physiotherapist in
Musculoskeletal and Orthopaedics,
specialising in children between
the ages of 0-16 years.**

Please get in touch for more
information on how I may be able to
help your little one.

Call Lucy: 07841 518234
lucy@footprintschildrensphysio.co.uk
www.footprintschildrensphysio.co.uk



Editor: pbarnes20@icloud.com | Tel: 07808 775302



POSTLING GLASSBLOWING

Postling Glassblowing



A Unique,
Glassblowing
Experience


Come and enjoy
blowing some glass to
create your very own piece

Please contact us for
further information

Martine: 07722 589910
Paul: 07951 628173

postlingglassblowing@gmail.com

 @postlingglassblowing
 Postling Glassblowing



Your Local Pharmacy

- NHS & Private Prescriptions
- Travel and Speciality Vaccination Clinic
- Weight Loss Clinic
- FREE Delivery Available
- Private Prescriber Available
- Emergency Medication Supply
- NHS Flu & Covid Vaccinations
- Free Blood Pressure Checks
- Pharmacy First Service
- ONE YOU Stop Smoking Provider





Delivering prescriptions
to the local community of
Lyminge, Elham, Etchinghill,
Postling, Hythe, Rhodes
Minnis, Stelling Minnis and
the surrounding areas.

Ask a member of staff
to learn more

Contact us at
TEL:
01303 862425

EMAIL:
lymingeinformed@gmail.com

Or come in to the store:
21 Station Road, Lyminge
Folkestone CT18 8HQ

CHRISTMAS LIGHTS SWITCH-ON - 27 NOVEMBER



Kingdom

INTERIORS

- Carpets & Flooring
- Painting & Decorating
- Interior Inspiration

Your local, experienced, interior specialists,
covering Hythe, Folkestone, New Romney,
Lympne, Elham Valley and surrounding villages.

01303 901298
Email: shop@kingdom-interiors.co.uk
www.kingdom-interiors.co.uk



FABRIC

CONSTRUCTION GROUP

SPECIALISTS IN PERIOD
PROPERTY BUILDING &
MAINTENANCE

OVER 20 YEARS EXPERIENCE ACROSS
ALL ASPECTS OF MAINTENANCE TO PERIOD
PROPERTIES USING TRADITIONAL
METHODS AND MATERIALS

CONTACT US TO DISCUSS YOUR PROJECT
EMAIL: INFO@FABRICCONSTRUCTIONGROUP.CO.UK
CALL: 07912 757311
WWW.FABRICCONSTRUCTIONGROUP.CO.UK

Pilgrims Hospices Christmas Fair

Sponsored by ultima

Entry £3 • Children free
 Father Christmas visit £5 per child
 Stalls & games • Food • Grand prize draw
 Children's crafts • Music



**Saturday 22nd
 November 2025
 11am – 4pm**

PGL Beyond, Grosvenor Hall, Kennington, TN25 9JZ



Pilgrims Hospices in east Kent is a company limited by guarantee.
 Registered charity number: 293968.
 Registered company number: 2000560.
 Registered office: 56 London Road, Canterbury, Kent CT2 8JA



Funded by the National Lottery, everyone is welcome - no matter your experience!

FREE and booking is not required.

For further information call us on 01303 269602

DATES FOR YOUR DIARY

First Wednesday of the month, 5th November:

11:15AM – 12:15PM

at The Tayne Centre.

The Tayne Centre,
 Church Road, Lyminge, CT18 8JN

Then every Wednesday of the month
 12th, 19th and 26th November:

11:15AM – 12:15PM

at the Methodist Church.

The Methodist Church, Church Rd,
 Lyminge, CT18 8JA



Hythe, Lyminge & Ashford
 Registered charity number 1125274.
 Company number 6589817.
 *Age UK Hythe, Lyminge and Ashford 2025.



Let's change how we age

A TRACEY PHOTOGRAPHY SERVICES

- Family Photography
- Wedding Photography
- Portraits / Headshots
- Candid shoots
- Commercial / Real Estate

BOOK NOW

07456528962

atraceyphotography@outlook.com



**ATRACEY
 PHOTOGRAPHY**

**Local
 Photographer –
 Based Right Here in
 Lyminge**

**Friendly, Reliable
 Service with a
 Personal Touch**

**Flexible
 Availability –
 Evenings &
 Weekends Welcome**

**Competitive
 Pricing – Packages to
 Suit Every Budget**

**New Clients Get
 10% Off First Booking!**

The Card

My Christmas Card is sixty years old -
 And I've used it thirty times all told.
 Let me explain; it goes to Harry my mate -
 And has done so since forty eight.

It depicts carollers spreading good cheer -
 Which I mail to him every other year.
 I write lightly in pencil every greeting I
 send
 It's a bi-annual event at the house of my
 friend.

When it's Harry's turn he just has to make
 sure,
 My message is erased from the Christmas
 before.
 So what began as a school boy's idea,
 Is now part of our Christmas atmosphere.

Harry adopted it with his customary zeal -
 As a canny Scot it has a certain appeal.
 A second class stamp and hopefully -
 Next Christmas Harry will return it to me!

**Written by: JT Sandgate
 Creative Circle
 Tel - 07435 580028**

MARTINI BEARS PRESENTS

Lyminge Winter Arts & Crafts Fair

A curated show and bazaar for handmade products

**SATURDAY DECEMBER 13TH 2025
10 AM TO 3 PM
LYMINGE VILLAGE HALL**



Free Parking
Free Entry
Refreshments available
WOODLAND ROAD LYMINGE CT18 8EW

MUSIC ON A FRIDAY

...are holding a

Christmas Concert

5th December at 7pm
at LYMINGE PARISH CHURCH

Mince Pies And Mulled Wine
Donations To Charity

Available face-to-face or online KENT TEST & PRIMARY TUITION

Aaron Rice

PGCE, BA English, MA (Journalism)
Lyminge teacher with over fifteen years of
primary school and 11+ experience

DBS Certified

Call: 07544 406299

12

This Newsletter can be viewed in colour
at www.lyminge.org.uk/newsletter



Join us for our every popular

Gardeners' Question Time
with Steve and Derek from
Farthing Common Plant Centre



Tuesday 18th November

at
The Tayne Centre, Lyminge
Refreshments from 7.15pm

Non-members very welcome

For more information about the Gardeners' Society
please email lymingegardeners@gmail.com
or call Anne on 07703 14900

LYMINGE AND ELHAM VALLEY STROKE SUPPORT

Have you or someone you know been affected by a stroke?

Come and join our informal support group (no membership fees to pay). We usually meet on the 1st and 3rd Mondays of the month between 10am and 12 noon at The Coach & Horses, Lyminge

New faces very welcome

NOVEMBER DATES
3rd November
17th November

Thank you to everyone who supported the KSS Air Ambulance Charity presentation on 15th September

We raised £132.50

For more information, to check the dates of meetings/ events, or if you would like support but are unable to attend the meetings email lymingestrokesocial@gmail.com or telephone Fran 07846 177409 or Heather 07427 664084



Coach & Horses

For all or any information please contact Sue or Charlie at the pub on 01303 901403.

Thank you all for your custom.

Tuesday evening 6pm-8pm

Pie and chips/mash night **£12.50**

Tuesday evening from 6pm- close

Board games club

Every 3rd Wednesday of the month 7pm start

Bingo night

Last Wednesday of every month 7pm

Quiz Night.

Pre book teams & tables please.

Every Friday all day and evening

Fish Friday, cod and chips plus a drink **£12.50**
or Takeaway Cod and chips **£10.00**

Halloween night from 7:30pm

We have The Undecided playing for our Halloween party.

Cake and Create

ART • CAKE • CONNECTION
Festive Series

Gentle drawing & watercolour

Nature-inspired crafts

Relax and connect



Step into the garden studio of Cottage Art & Design nestled in an idyllic spot within the Elham Valley for relaxed mornings of creativity, cake & connection.

Following the success of our introductory sessions we are running a 6 week series leading up to Christmas. We will be focusing on creating a wintry watercolour Christmas card, vintage style pressed flower picture, leaf printing study and a festive table or door decoration.

No experience needed - just curiosity.

Every Thursday from 6th November to 11th December
10.00am - 12.30pm

£150

(£30 Deposit to be paid online to secure your place, £20 each week thereafter)

Limited spaces

Visit www.cottageartanddesign.com/artclasses for more information and to book or call
Claire 07738580813



We are Ashford based Chartered Surveyors
With over 30 years' experience and in-depth knowledge of the local commercial property market.
Redundant Agricultural Buildings always sought.

Stafford Perkins

CHARTERED SURVEYORS

www.staffordperkins.co.uk

01233 613900



Your Local Commercial Property Experts

richard@staffordperkins.co.uk

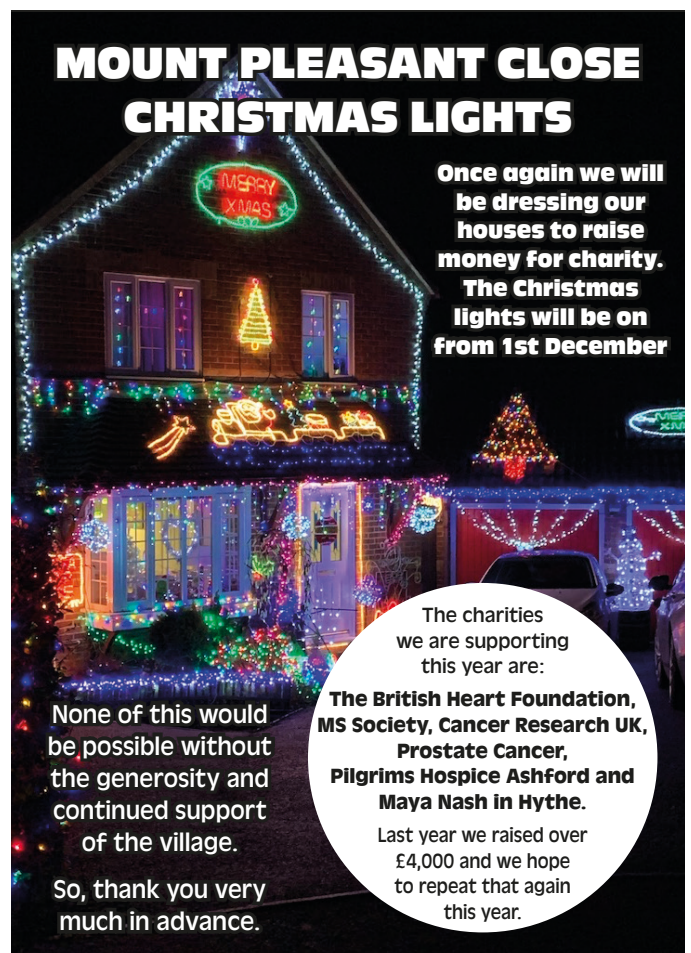


This Newsletter can be viewed in colour
at www.lyminge.org.uk/newsletter

13

MOUNT PLEASANT CLOSE CHRISTMAS LIGHTS

Once again we will be dressing our houses to raise money for charity. The Christmas lights will be on from 1st December



The charities we are supporting this year are:

The British Heart Foundation, MS Society, Cancer Research UK, Prostate Cancer, Pilgrims Hospice Ashford and Maya Nash in Hythe.

Last year we raised over £4,000 and we hope to repeat that again this year.

None of this would be possible without the generosity and continued support of the village.

So, thank you very much in advance.



Hythe Aqua Swimming Club has vacancies for potential competitive swimmers Level 7 and above.

Join a Club with a nationally accredited swim programme.

Lessons/Coaching sessions are held on Tuesday & Thursday evenings at Hythe Pool.

We also welcome adult length swimmers to our Adult training on Tuesdays & Thursdays at 9.00pm

To book your place

Email hytheaqua@btinternet.com or check out our website
www.hytheaqua.org.uk or Facebook

Removed by request
of the originator



Christmas Goose

Local produce from
Longland Farm, Elham

Premium Quality & Welfare
Environmentally Caring

2-Star Great Taste Award 2025
Small 4-5kg • Medium 5-6kg
Large 6-7kg
£20/kg

07825 181870
hello@longlandfarm.co.uk
£20 deposit payable
Collection 23 Dec

CHRISTMAS LIGHTS SWITCH-ON - 27 NOVEMBER



Every 4th Sunday
9.30 - 12.30
**LYMINGE ARTISAN &
FARMERS MARKET**

**23 NOV
28 DEC**

LYMINGE VILLAGE HALL
WOODLAND ROAD CT18 8EW



RHODES MINNIS CAT SANCTUARY
REGISTERED CHARITY 262245

**Christmas
FAIR**

GIFTS - HOMEMADE CAKES - TOMBOLA - STALLS
BARROW OF BOOZE RAFFLE - HAMPER RAFFLE -
CHILDRENS ACTIVITIES

PLUS MEET OUR VERY SPECIAL GUEST
FATHER CHRISTMAS!!*

10AM - 1PM **SATURDAY**
29TH **NOVEMBER**

HAWKINGE COMMUNITY CENTRE
VIA HERON FORSTAL AVENUE
HAWKINGE
CT18 7FP

*PLEASE NOTE THERE IS A CHARGE OF £2 TO INCLUDE A SMALL GIFT

**Counselling, Supervision
and Mindfulness**

**Supporting you with
anxiety, depression,
stress bereavement and loss,
relationships, trauma...**

**In person or online
Hythe area**

Contact Ellen for more information or to book
Call: 07740 857109
Email: ejgarrard2712@gmail.com
Visit: www.ellengarrard.co.uk




Hythe, Lyminge & Ashford
ageUK
**CHRISTMAS
FAIR**

JOIN US FOR DECORATIONS, CRAFTS, MUSIC,
DELICIOUS TREATS AND LOTS MORE!

**SATURDAY 29TH NOVEMBER
10AM - 2PM**

**AGE UK HYTHE
SANFORD HOUSE
STADE STREET
HYTHE
CT21 6BD**

Registered charity number 1125274. Company number 6589817.
Age UK Hythe, Lyminge and Ashford 2024.

Be an active part of your community - join The Lyminge Association



**Worried About Your
Memory?**

Drop in for a free, friendly memory check with the Kent Memory Champion Team, here to listen, support, and guide you.

We offer relaxed, one-to-one memory checks using the SMMSE a simple, pen-and-paper activity that looks at memory, attention, and thinking. It can help spot early signs of change and guide you to the right support.

Join us in a warm, relaxed space at Age UK Hythe, Lyminge & Ashford

Confidential
Friendly & supportive
Takes around 30 minutes



Call or email us now to make an appointment:
[01303 269602](tel:01303269602) & dementialead@ageukhla.org.uk
Take a positive step for your wellbeing today



Hythe, Lyminge & Ashford
ageUK

Meals on Wheels

A nutritious and freshly prepared 2 course meal delivered directly to your door

Price £9.00

Delivered by one of our dedicated team members, hot and ready to eat. The driver will carry out a welfare check and dish up if required.

Areas covered
Hythe, Lyminge, Ashford and surrounding areas.

Available – 7 days per week
(including bank holidays)
Order up to 10.15am the day you want a delivery.

For more information, please contact the admin team [01303 269602](tel:01303269602) admin@ageukhla.org.uk

Registered charity number 1125274. Company number 6589817. © Age UK Hythe and Lyminge 2024



Lyminge Historical Society

TUESDAY 4TH NOVEMBER 7.30pm

At the Tayne Centre, Church Road, Lyminge CT18 8JA

We present **Martin Crowther**

'A History of Canterbury in a little less than 100 Objects'



The Canterbury Pendant. Copyright Canterbury City Museums and Galleries Service

Members Free. Visitors: £5 Payable on the door
New members and visitors are always welcome

All our publications, including our latest volume *Lyminge a History Part 14*, are on sale at our meetings. We accept payments by cash or card.

FORTHCOMING MEETINGS

2nd December

AGM and Talk by John Buss

"Jane Austen in Kent"

January - February

Winter Break

Elham Valley Line
THE ELHAM VALLEY LINE TRUST
Heritage Centre

Elham Valley Line Trust Heritage Centre
Peene, Folkstone, Kent. CT18 8AZ

Festive Craft Fayre

15th & 16th November
22nd & 23rd November 2025
10 a.m. ~ 4 p.m.

Unique Traditional Handcrafted Gifts
Hot and Cold Refreshments

Christmas Special
Miniature Train Rides
Weather and availability permitting

Father Christmas

FREE ENTRY and PARKING

Railway Museum
Entry Fee applies

www.elhamvalleylinetrust.org
Registered charity No.295563

Information correct at the time of printing

CHRISTMAS LIGHTS SWITCH-ON - 27 NOVEMBER



THE KINGS ARMS What's On!



Golden Years Menu (65+)

Mon-Fri 12-3pm

1 course £14 - 2 course £17 - 3 course £19



Our New Autumn Menu is Here!

Seasonal Favourites with a twist



Happy Hour

20% off drinks

Mon-Thurs 4-6pm



Live Music Saturdays

Every Saturday 4-6pm

Quiz Night



Every 2nd Monday of the month

Next: 13th October - Halloween Special

Christmas at The Kings

Book now for Christmas Day -

SELLING FAST!



Festive Set Menu



2 courses £21.95 - 3 courses £25.95

Mon-Fri 12-3pm / Mon-Thurs 5-8:30pm

From 24th November to 19th December



01303 840242



info@thekingsarmselham.com



The Kings Arms, Elham,
CT4 6TJ

Thoughtful Food...

...is a group of local volunteers looking at our food, and how this impacts climate change. Our aims are to support people to produce more of their own food, and to shop locally, sourcing seasonal produce. We also run a community allotment in Lyminge and welcome new members.

✉ thoughtfulfoodgroup@gmail.com f f @thoughtfulfoodgroup

Next **Thoughtful Food** meeting, **7.30pm MONDAY 27th October**, at The Coach & Horses.



The importance of dead wood in your garden

Dead wood is essential for healthy soil and plays a vital role in supporting biodiversity. As timber breaks down, it transforms into a new ecosystem. It's a fascinating journey, powered by wildlife working together to complete the cycle of regeneration. There are several ways you could encourage this in your garden.

Create a stack by pushing cut branches into the ground to form uprights, then build a wigwam of branches filled with stems and prunings – especially hollow ones. Solitary bees and wasps (not the stinging kind) nest in hollow stems and are vital pollinators and part of the food chain. Robins and wrens will forage for bugs sheltering within. For a decorative touch, use coloured stems like red cornus or willow. Don't be too tidy - broken stems with jagged edges create essential cracks and crevices.

You could create a dead hedge. Weave cut stems through upright branches to form a dense structure in contact with the soil, allowing microbes and minibeasts to access the material. This offers excellent shelter over winter and nesting sites for solitary bees, beetles, and wasps. A dead hedge can act as a low boundary and become a permanent garden feature – just top it up as it breaks down.

Woodpile tips: Use a mix of hardwoods, softwoods, and various sizes. Stack in layers: large logs at the bottom, thicker branches in the middle, and hollow stems and twiggy material on top. Fill gaps with smaller sticks, dead leaves, soil, or moss to create safe overwintering spots. Leave cut ends exposed and drill holes into larger logs to provide nesting sites for cavity-nesting creatures. Bury some wood to keep it moist and accessible to soil microbes, enhancing the decomposition process. With thanks to garden news Nov 2025

Getting to know Permaculture

These small changes that can be made in the garden leads quite well into our permaculture season of articles.

Principle: small and slow solutions

'Slow and steady wins the race'. Permaculture encourages small and slow solutions – ones that can begin to grow and gain momentum. This also avoids big, sudden changes that might lead to unintended consequences, creating more problems to fix.

In action

When redecorating a house, taking the process room by room minimises disruption to the functioning of the household. It allows greater time to think about choices, and avoids overwhelm of attempting too much too quickly. There is also time to learn from mistakes made on a smaller scale, before continuing to complete the whole task.



There's more than Jack-o'-Lanterns to Pumpkin! Pumpkin is incredibly versatile in both sweet and savoury dishes.

Roasted pumpkin and herb Farinata

Ingredients

- 250g/9oz gram flour
- 500ml/18fl oz warm water
- 400g/14oz small pumpkin, sliced into slim crescents
- 1 red onion, cut into 8 wedges
- 2 fresh rosemary sprigs, leaves picked and roughly chopped
- 5 tbsp extra virgin olive oil
- 1 lemon, juice only
- 10 fresh sage leaves, roughly chopped
- 15 pitted green olives, roughly chopped
- Salt and freshly ground black pepper
- Green salad and fried halloumi (optional), to serve

Method

1. Preheat the oven to 200C/180C Fan/Gas 6.
2. Whisk the gram flour and water together until no lumps are visible. Cover and set aside for up to 24hrs at room temperature, or at least while the vegetables are roasting.
3. Toss the pumpkin, onion and rosemary together with 1 tbsp olive oil in a 20x30cm/8x12in roasting tin. Season with salt and pepper. Transfer to the oven and cook for 25 minutes, turning once, until the pumpkin is tender. Remove from the oven and pour over the lemon juice. Turn the heat up to 220C/200C Fan/Gas 7.
4. Stir the remaining olive oil, sage and olives into the gram flour batter and season generously with salt and pepper. Pour the batter over the vegetables before returning to the oven to cook for a final 25 minutes. Remove when the farinata is puffed and golden. Serve alongside a dressed green salad and halloumi, if you like.

LYMINGE PARISH COUNCIL

For Lyminge, Etchinghill and Rhodes Minnis

The following meetings all take place at: Lyminge Village Hall

NEIGHBOURHOOD PLAN

4 November - 17.30

FINANCE AND ADMIN -

4 November - 18.30

COMMUNITY ENGAGEMENT AND EVENTS -

5 November - 18.00

FULL COUNCIL -

11 November - 19.00

PLANNING AND LICENCING -

20 November - 09.30am

at Etchinghill Village Hall

Any additional meetings will be on our noticeboards/website

WHOSE WHO

Chairman of Lyminge Parish Council:

Shaun Pottage

Committee chairs:

NHP: Cllr Sue Baldwin

Planning and Licensing:

Cllr Emily Arnold

Community Engagement and Events:

Cllr Sarah Fagg

Finance and Administration:

Cllr Sandra Harrison

Councillor contact details on our website.

www.lymingeparishcouncil.org.uk

mobile: 07999 403948



Lyminge council would like to thank all the residents of Mount Pleasant Close area who returned answered survey questionnaires to the council regarding the future of this plot of land. There was an overwhelming consensus that the area should remain as it is with a few small changes. The maintenance work provided by our contractors has given the area a new tidy look and residents are pleased with the results.

There were requests that the dead tree stumps should be removed and the council will be looking into this first. The three most popular requests were for a seating area, wildflower area and extra flower beds along the path through the green. All other items were rejected especially allotments and fencing.

Cllr Sandra Harrison

clerk@lymingeparishcouncil.org.uk



LYMINGE PARISH COUNCIL

For Lyminge, Etchinghill and Rhodes Minnis

WE NEED YOUR HELP PLEASE!

As you know we are developing the Neighbourhood Plan and are at the evidence gathering stage. We are considering Heritage in relation to buildings and other assets that are not eligible to be listed but due to their local importance we would like to try to protect such:

- **Cultural landscapes:** heritage assets associated with a significant period in an area's history;
- **Social history:** assets associated with the social history of an area, including intangible aspects of heritage such as traditions and practices, or literary associations;
- **Patterns of settlement:** notable examples of planned or incidental planning including: street plans; characteristic clusters of assets; interrelationship between buildings and open spaces; major infrastructure;
- **Local figures:** assets associated with individuals of local importance.

There are at least 8 (Scheduled Ancient Monuments) at Tolsford, and in Lyminge Forest.

To get involved in the evidence gathering for the Neighbourhood Plan, we invite residents to identify what you consider might be eligible, and in the first instance, take a photo, mark the address and location and send it to: clerk@lymingeparishcouncil.org.uk

Here are some useful links:

[https://historicengland.org.uk/advice/planning/improve-your-neighbourhood/Search the List](https://historicengland.org.uk/advice/planning/improve-your-neighbourhood/Search%20the%20List) -

Find listed buildings, monuments, battlefields and more/Historic England Local Heritage Listing: Identifying and Conserving Local Heritage/Historic England

A MESSAGE FROM SARAH FAGG - CHAIRMAN OF COMMUNITY ENGAGEMENT AND EVENTS

On behalf of myself and the committee, I would like to thank all of those who offered time to help at the Parish on Parade event in July. Without you such events are not possible. The weather was not on our side, but I think we made the most of it. Let's hope next year is a smashing day. In other news there has been lots going on behind the scenes, with meetings with Mr Day at Lyminge Primary School. We are excited to be involved with a new space within the school, for the children. We will keep you posted! Any ideas of events you would like to see in our community please email us - clerk@lymingeparishcouncil.org.uk. Thank you again for your support.

www.lymingeparishcouncil.org.uk

mobile: 07999 403948

clerk@lymingeparishcouncil.org.uk



The Neighbourhood Plan: Environment Working Group

It has been advertised elsewhere and so hopefully everyone is aware that a Neighbourhood Plan is in the process of being developed, covering the entire Lyminge Parish.

Neighbourhood planning gives us as a local community direct power to develop a shared vision for our neighbourhood and shape the development and growth of our local area, and as such it is important that we do our best to get our voices heard during the process.

Several community consultations have been undertaken over the past couple of years, and now all the relevant information is being collated in order to try to produce a first draft of the Plan within the next few months. One of the sections of the Plan will cover issues related to the natural environment, and so a local working group has been formed to try to facilitate drafting of this part of the Plan.

The main areas that we expect the “Environment including Ecology” working group to consider include:

- Maintaining and enhancing connectivity of wildlife corridors
- Encouraging walking and cycling
- Identifying new routes for walking and cycling, bridleways
- Protecting and enhancing valued green spaces (including allotments)
- Nominating new green spaces
- Safeguarding views of significance
- Supporting sustainable new home to sustainable locations
- Flood management

Much of this work involves mapping features of the local environment so we have been looking at various mapping resources. In terms of biodiversity mapping and trying to identify areas for maintaining and enhancing connectivity of wildlife corridors we are looking at online resources including:

Georeferenced local biodiversity data:
<https://tinyurl.com/GeoreferencedLocalBiodiversity>

Magic maps: <https://magic.defra.gov.uk/>

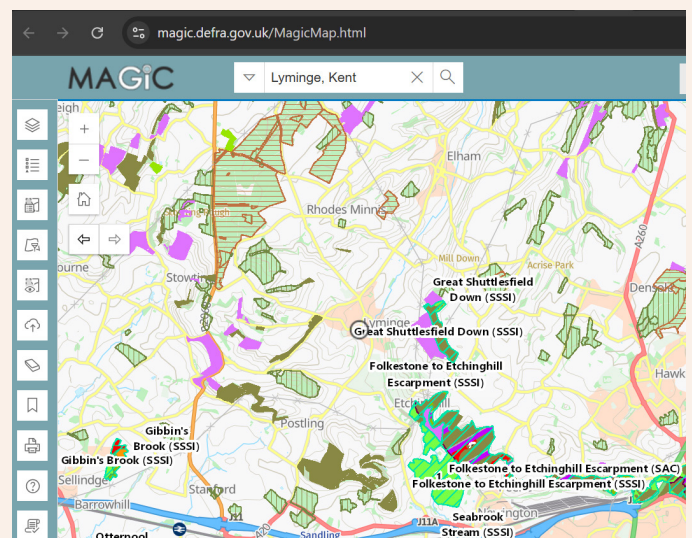
Kent Local Nature Recovery Strategy:
<https://tinyurl.com/makingspacefornaturekent>

Google maps (which shows East Brook and Nailbourne streams quite well) and Google Earth.

Please let us know if you'd like to get involved with the Working Group(s) by email to the clerk of the Parish Council.

The next two working groups meetings are currently planned for the last two Tuesdays in November, the 18th and 25th, from 6.30pm to 8.30pm, but please check with the Parish Council in advance for final details or in case plans change.

If you prefer not to get involved with the Working Groups please do keep an eye out for details of any community consultations, where the working groups will present their progress for discussion and modification.



An example of an online mapping tool, “magic maps” from DEFRA, that is being consulted as part of the process of developing the Neighbourhood Plan



Minimise Pain

Optimise Mobility

Enhance Your Health

Welcome to AK Healthcare – Your Trusted Osteopathic Clinic in Lyminge.

Since 2011, Adam and Katie have been dedicated to bringing relief and mobility to the Elham Valley community. At AK Healthcare, we believe in a holistic approach to health, focusing on treating the whole person, not just the symptoms. Our experienced Osteopaths use gentle and effective techniques to address a variety of conditions, from back pain and sports injuries to arthritic pain and beyond. Our commitment is to help you achieve optimal health and well-being in a warm, welcoming environment.

Visit us today and experience the difference that personalized care can make for you. Your path to a healthier life starts here!

Contact us to book your appointment today!

www.AKHealthcare.org.uk

07904311554

Or scan the QR code below:



The Lyminge Association

We're here to support and develop our community!

CONTACTS:

Chair: Heather Dunford 07427 664084 [E heather.dunford@gmail.com](mailto:heather.dunford@gmail.com)

Minutes Secretary: Peter Barnes 01303 863737 or 07808 775302 [E pbarnes20@icloud.com](mailto:pbarnes20@icloud.com)

Treasurer: Janet Fry 01303 863177 [E janet@rhodesminnis.org.uk](mailto:janet@rhodesminnis.org.uk)

Committee Members: Peter Barnes (deputy chair), Marian Chubb, Richard Chubb, Stephen Guyatt, Gillian Heywood, Dennis Huntley, Robin Mackonochie, Derek Smith, Penny Stephens, Bernie Wood, Martin Wood

Newsletter: Peter Barnes 01303 863737 or 07808 775302 [E pbarnes20@icloud.com](mailto:pbarnes20@icloud.com)

Please contact the Chair or Treasurer if you need any financial support for your charity.

CHRISTMAS LIGHTS SWITCH-ON - 27 NOVEMBER



WE'RE EXTENDING OUR HOURS & HOME VISITS!

- ✓ Routine foot care
- ✓ Nail cutting & reduction
- ✓ Corn & callus removal
- ✓ Verruca treatment
- ✓ Diabetic foot care
- ✓ Fungal nail advice & treatment
- ✓ Ingrown toenail care
- ✓ Foot health advice

CLINIC APPOINTMENTS – NOW WITH EXTENDED
HOURS – HOME VISITS – FLEXIBLE

☎ Jayne: 07832 797 341

✉ jayne@solelyfootcare.co.uk

🌐 www.solelyfootcare.co.uk



Save up
to 3 lives
in 1 hour



Join us in saving lives
this Christmas at
blood.co.uk



FULLY INSURED

ELHAM DOG TRAINING CLUB

- Dog Training and Pet Care Services
- Kennel Club Good Citizen Dog All Levels Training
- Puppy Training
- Talking Dogs Rally Training
- Kennel Club Accredited Instructor and Kennel Club Good Citizens Scheme Assessors



FULLY INSURED

Please call Lyn to book a space: 07866 234820 or email: elhamdtc@gmail.com visit: www.elhamdogtrainingclub.com for more information

Community Hall Details

LYMINGE VILLAGE HALL

REGISTERED CHARITY.281465



Large hall with stage, new kitchen and flexible hire.
Excellent parking facilities, disabled access, proximity to playgrounds and playing fields situated in a beautiful countryside location.

Capacity: 200 people dancing /audience seating, 100 with tables. Small rooms available for up to 50 seated.

BOOK ONLINE: lymingevillagehall.org.uk
EMAIL: admin@lymingevillagehall.org.uk
INFO: 07547 545601

Full pricing can be found on our website. Guideline prices:
Main Hall hire: £88.40 (Fri/Sat evenings)
£47.60 (Sat/Sun morning or afternoon)

Find us on Facebook

VALLEY METHODIST CHURCH, LYMINGE AND TAYNE CENTRE

Church Seating	Max 150	£22 per hour
Clayson Hall (with Stage) Seating	Max 150	£16.50 per hour
Rigden Room Seating	Max 35	£11 per hour
Wesley Room Seating	Max 15	£11 per hour

All rooms have use of kitchen, toilets and disabled toilet. With the exception of Wesley room, all rooms are disabled-friendly and accessible.



Contact: 07716 521405 or taynecentre@outlook.com

Lyminge Library Opening Times

Monday	10am - 2pm
Tuesday	10am - 1pm, 2pm-5pm
Wednesday	10am - 2pm
Thursday	10am - 1pm, 2pm - 5pm
Friday	10am - 2pm
Saturday	9am - 1pm

Tel: 03000413131 lymingelibrary@kent.gov.uk

ETCHINGHILL VILLAGE HALL

The next time you are thinking of holding a function why not try Etchinghill Village Hall, which holds the highest Hallmark accreditation level (Hallmark 3), with its excellent facilities, including ample parking space.

The standard hire charge for the main hall and kitchen are:

ANY DAY OF THE WEEK ANY TIME £15 PER HOUR
No winter supplements. No extra charges.
Ideal for family parties and get togethers.

The use of a separate Committee Room is also available.

For all bookings or enquiries please contact:

The Duty Manager on 07514 758936

RHODES MINNIS VILLAGE HALL

CHARITY NO.800345

Rhodes Minnis Village Hall is located 2kms (1¼miles) from Lyminge and just off Longage Hill and Whitehorse Lane in Chapel Lane.

The hall is ideal for children's parties, band practice, quizzes, meetings, wedding receptions, fundraising events and much more. It has a fully equipped kitchen and baby changing facilities.

Rates

Mon to Fri	£18 per session £48 all day
Sat & Sun	£23 per session £33 for evening session and £69 all day

Sessions

AM session	08.30 - 12.30
PM session	13.30 - 17.30
Evening session	18.00 - 23.45
Separate rates for Bank Holidays and New Year and special rates for regular users.	

For all bookings and enquiries please contact:

Mick & Dorothy Athow: 01303 86261
Email: booking-rmvh@outlook.com

PRE-SCHOOL OPPORTUNITIES



Lyminge Baby & Toddler Group

We are excited to welcome you to our local parent, baby and toddler group.

Please come along, meet new mums and dads for a chat and a play.

It costs £3.50 with tea and coffee provided along with snacks for your child.

Tuesdays, term times only.

10am to 12noon at the Tayne Centre

First session is free

Follow us on Facebook and Instagram

Contact Ellen at 07870 405567

Early Years Education & Day Care for Children Aged 2-5



LYMINGE Pre-school

Every Day Adventures at our **OUTSTANDING** pre-school

COUNTRYSIDE SETTING

FANTASTIC FACILITIES & GARDENS

QUALIFIED & LONGSTANDING TEAM

WRAP AROUND CARE 8AM-5PM DAILY

HOLIDAY CLUB OUTSIDE OF TERM TIME

AFTER-SCHOOL CLUB

PARENT PORTAL



Rated **OUTSTANDING** by OFSTED 2022

We'd love to hear from you:

☎ 01303 863149

✉ LYMINGEPRESCHOOL@GMAIL.COM

Etchinghill Baby & Toddler GROUP

10.15-11.30am every Wednesday

(term time only)

at Etchinghill Village Hall

£3 per child

Come along to Etchinghill's Parent and Toddler group welcoming all pre-school children. We have plenty of toys and snacks for the little ones, and there is always tea, coffee and cakes for the adults.

For further information call Ruth on 07817 777975, or look at Parent and Child Etchinghill Facebook page.



24



NURSERIES AND FOREST SCHOOL

Bridging the indoor and outdoor learning environment for children in their early years

Badgers Bridge has three sites, set in the idyllic countryside of Postling, Lymgne and a Forest School in Lyminge. We are a small and friendly nursery, who blend the Montessori principles with the outdoor learning ethos.

FIND US AT

- 📍 Postling Village Hall, The Street, Hythe CT21 4EU
- 📍 Lymgne Village Hall, Aldington Road, Hythe CT21 4LE
- 📍 Outward Bound at Lymgne 📍 Forest School in Lyminge

FROM 18 MONTHS TO 5 YEARS

OPEN MONDAY TO FRIDAY 8.30AM TO 3PM



GET IN TOUCH TO FIND OUT ABOUT AVAILABILITY AND MEET OUR LOVELY TEAMS

badgersbridge@gmail.com

01303 862951

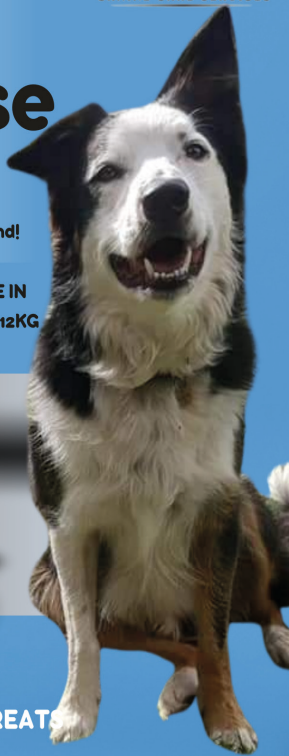




Spring Rise Dog Food

Healthy and tasty meals for your furry friend!

AVAILABLE IN
2KG, 6KG & 12KG



GRAIN FREE / SUPERFOOD 65 /
SUPER PREMIUM / TRAINING TREATS

07582 407637

MAPLE COTTAGE, ETCHINGHILL, CT18 8BZ

FREE DELIVERY EVERY WEDNESDAY AND FRIDAY*
*within 15 miles of CT18 8BZ

E.F. LETTINGS

Residential & Student



YOUR LOCAL LETTING AGENT

At EFLettings we believe in a personalised service
We are here for you every step of the way

www.efettings.co.uk
Tel: 01227 533550

This Newsletter can be viewed in colour
at www.lyminge.org.uk/newsletter

25



Carpentry, Joinery &
Building Contractors

07828 751 063

shaun@candjworksltd.com
www.candjworksltd.com

Find us on



Over 30 years of experience in the industry. Locally based.

Doors
Bathrooms
Bespoke joinery

Stairs
Kitchens
Living spaces

Roofing
Extensions
Loft conversions

Contact us now for a free quote: 07828751063. Visit our website www.candjworksltd.com

Editor: pbarnes20@icloud.com | Tel: 07808 775302

**Freshly Prepared
Breakfasts & Light Lunches
Home Baked Cakes
Vintage Afternoon Teas
Coffees Teas
Takeaway Available
Private Functions**

Open Tuesday to Friday

9am - 3pm

Saturdays, open 8.30am - 1.30pm
(breakfasts only)

Dog Friendly

THE COFFEE CABIN TEA ROOM LTD.
CANTERBURY ROAD, LYMINGE, KENT.
CT18 8HU. 01303 864222
Instagram @thecoffeecabintearoomltd
Find us on Google Maps



**Laing
Bennett**
Independent estate & letting agents

**With our excellent local
knowledge & experienced
staff we will get you moving**

✓ **Free** professional photography, property floorplan, Rightmove premium listing & social media advertising

01303 863393

The Estate Office,
8 Station Road,
Lyminge,
Kent CT18 8HP

Follow us on
social media



www.laingbennett.co.uk

26

This Newsletter can be viewed online and in colour at www.lyminge.org.uk/newsletter



South Kent SEN Tuition

1:1 and small group tuition in your home

**Private tuition from highly experienced
and skilled teacher**

**Supporting children whose parents may have
decided that they should be educated other
than at school Electively Home Educated or
'Educated Otherwise than at School' (EOTAS)**

**Supporting children for whom school can be a
stressful and anxiety producing place.
I offer a gentler, more bespoke approach.**

**I also offer booster lessons in
reading, phonics and maths.**

**Contact me for a free 30 minute call
or virtual meeting to discuss your needs
and to see if I can help.**

www.southkentsentuition.co.uk
sarah@southkentsentuition.co.uk
07751 459085



Anna's Animal
Physiotherapy
For dogs, cats & small pets

Anna Lindley
(RVN, Dip.A.Physio)

**Tailored Animal
Physiotherapy for
Dogs, Cats and
Small Animals**

- Offering physiotherapy assessment and treatment of dogs, cats and small animals.
- Physiotherapy can help with osteoarthritis and the ageing pet, post operative orthopaedic surgery, neurological, spinal conditions, unexplained lameness and many more conditions.
- I use a combination of manual therapy, laser, ultrasound therapy, TENS, kinesiology tape and exercises to rehabilitate your pet depending on your their needs. I also address environmental and exercise factors that can help your pet with their condition.
- I am fully insured with over 16 years experience working with animals. I am a member of the International Association of Animal Therapists (IAAT).



**For more information
please visit my website:**

www.annasanimalphysio.co.uk
or feel free to contact me on 07944 606453 or
anna@annasanimalphysio.co.uk

Why not follow me on social media:

@annas_animal_physiotherapy f @annasanimalphysiotherapy



BOOK NOW

Minimise pain, optimise mobility, enhance your health.

Osteopaths, Adam and Katie, are here to help you minimise your pain, optimise your mobility, and enhance your health and wellbeing.

We believe that everyone deserves to live a life free from the limitations of pain, and we're here to support you on your journey to a healthier, more active lifestyle. Whether you are searching for help managing a chronic condition such as arthritis or circulatory problems, or you have a painful frozen shoulder, back pain, sciatica or recent injury... we are here to support you.

Book online via our website or call/email us for more information.



AK Healthcare, 4 Station Road, Lyminge, CT18 8HP
Tel: 07904 311554
Email: info@akhealthcare.org.uk
Website: www.akhealthcare.org.uk

Pet portraits in pastel by ROGER GOODY



Desk top or A4 mounted pictures, painted from email images or photographs ~ makes an ideal present

Please text Roger on 07768 977420

CHRISTMAS LIGHTS SWITCH-ON - 27 NOVEMBER

27



ENVISAGE GROUND CARE



**DOMESTIC & COMMERCIAL
GRASS CUTTING • HEDGE CUTTING
CLEARANCE • TREE WORK • FENCING**

Tel: 07724 447 368

Email:

enquiries@envisagegroundcare.co.uk

www.envisagegroundcare.co.uk

Sarah Holbrook

PAINTER & DECORATOR

Elevate your space with
20 years of expertise

Services tailored to your specification

Internal & External work

Paper Hanging

Domestic & Commercial undertaken

Peace of mind – Fully insured

Competitive rates –

Top notch service at affordable prices

Free quotations:

Get a clear understanding of costs

with no-obligation quotes.

☎ 07891 743740 ✉ sholdbrookdecorating@gmail.com

Daniel Kirby Roofing & Building

www.d-kirby-roofing-folkestone.co.uk



Find us on
Yell.com
★★★★★

Google
Verified Customer Reviews
★★★★★

**30 Year's Experience
Reliable Local Roofer
Free Quotes**

**FIND A SAFE,
LOCAL TRADER**
The Only Traders Vetted By Kent
Trading Standards



**All Roofing Work • Fibreglass & Felt Flat Roofing
Chimney Building & Repairs • New Roofs • Alterations
Insulated Conservatory Conversions • General Building**

Tel: 01303 892705 Mob: 07916 273886
E: roofersfolkestone@gmail.com www.d-kirby-roofing-folkestone.co.uk



28

This Newsletter can be viewed online and in colour at www.lyminge.org.uk/newsletter

 **Home
Instead.**
To us, it's personal

01303 847899

*Live well, your way
with care at home*

- Personal Care
- Companionship Care
- Home Help
- Dementia Care
- End of life Care
- Live in Care

CARE professional with client and Grandson

Home Instead
Folkestone, Hythe & Ashford
300 Cheriton Road
Folkestone, Kent, CT19 4DP
accounts.folkestone@fha.homeinstead.co.uk
www.homeinstead.co.uk/folkestone

colebrooksturrock.com

When it comes to selling or letting,

We give it some...

Contact your local, experienced Village agent for a FREE Valuation on 01303 892000

- 🍷 NO SALE NO FEE.
- 📷 Professional Photography, Floorplans, and Quality Glossy Brochures.
- 📄 NO lengthy Agency Contracts
- 🌐 ALL major portals, Rightmove, Zoopla, OnTheMarket.com etc.



Elham 01303 840422	Hawkinge 01303 892000	Saltwood 01303 260666	Sandwich 01304 612197	Walmer 01304 381155
-----------------------	--------------------------	--------------------------	--------------------------	------------------------

incorporating Browns colebrooksturrock.com

Looking to move?

Looking for an Agent that gives straight-forward, honest advice?

Look no further, choose Colebrook Sturrock Sales & Lettings

Call us now for your free market appraisal

Covering Hawkinge & Elham plus all surrounding villages 01303 892000

Tel: 01303 892000 / 01303 840422 Email: hawkinge@colebrooksturrock.com
 www.colebrooksturrock.com Email: elham@colebrooksturrock.com



HEAVER & LINCH
Bespoke Handmade Kitchens & Furniture

Bespoke Handmade Cabinet Makers based in Lyminge, covering Kent and the South East.

Over 30 years experience in creating stunning solid wood kitchens and furniture.

Get in touch for any advice, recommendations and a free quote.



Tel: 07832 360603 or 07832 363963

Email: heaverlinch@outlook.com

www.heaverandlinch.co.uk

CHRISTMAS LIGHTS SWITCH-ON - 27 NOVEMBER

29

Kent's Leading Mobility Specialists



Over 200 new & used scooters available

USED SCOOTERS FROM £395

CHAIRS FROM £595

HOME DEMONSTRATION LET US COME TO YOU



BEDS FROM £1395



Huge range of Shoes & slippers for problem feet



STAIRLIFTS



FOLKESTONE STORE

Tel: 01303 274574

www.safehandsmobility.co.uk

folkestone@shmobility.co.uk

Compass House, 347-349

Cheriton Road, CT19 4BP

ALSO AT BIRCHINGTON



APX PROJECT MANAGEMENT

Please contact:
paul@apxprojectmanagement.co.uk
07487 364155

From design to build, we use trusted quality trade professionals along with reliable suppliers to ensure budgets are met, with high standards maintained. Contact us if you're looking to –

- Extend your property
- Carry out an external or internal refurbishment
- Convert an existing building into a new dwelling



Dennis Huntley
Chimney Sweep



Wood burners and multifuel stoves installed
Hearths and fireplaces built & installed
Over 40 years' experience

01303 862343 • 07850 784365



dennis.huntley@talktalk.net • www.dennishuntley.co.uk

Auto Economy Centre

Fully equipped Mechanical Repair & Service Centre
With the latest diagnostic equipment
Half price MOTs when booked with any service

01303 863656

Orchard Garage, Canterbury Rd, Etchinghill
www.autoeconomycentre.com

AIR LINK CARS

(You pack up, we pick up)

Airport, Seaport & Long Distance Travel Specialists.

The family run business where service really counts

Estate cars and People Carriers

Fixed price 24hrs a day. No extras.

Written confirmation of booking.

For the Easy Airport Link, think AIR LINK!

01303 670370 - 07766 824 474

airlinkcars@yahoo.com



Gosbee
LANDSCAPES

FENCING | GATES | PAVING | RESIN BONDING

- Over 35 years experience • Jacksons Approved Installer
- Marshalls Approved • Check-a-Trade registered



Call Martin Gosbee: **07974 835 511 | 01303 863 337**

GOSBEECONSTRUCTION@GMAIL.COM
GOSBEE.CO.UK



D.W. Garden and Mini Digger Services

Mowing, Fencing, Hedge Cutting,

Chainsaw Work, Turfing

Free Quotes

Contact David **07765789721**



30

KW CONSTRUCTION
PLASTERING & RENDERING SPECIALIST

ALL GENERAL BUILDING INCLUDING:

ROOFING, BRICKWORK, TILING, PATIOS,
LANDSCAPING, SCREEDING, RENOVATIONS,
REPAIRS & MAINTENANCE.

30 YEARS EXPERIENCE, COMPETITIVE RATES,
A FULLY INSURED, PROMPT & RELIABLE
HIGH QUALITY LOCAL BUILDER

KENNY 07743 488361

HANDYMAN
SERVICES
SJW

www.Facebook.com/sjwoodhandyman
www.Instagram.com/sjw.handymanservices
07796 384857

LYMINGE FOOD & WINE

01303 862870



PayPoint



POST OFFICE

Our new opening times are:

Mon - Sat **7:00 - 21:00** Sunday & Bank Holidays **8:00 - 20:00**

We offer National Lottery, ATM, Post Office, InPost Lockers, PayPoint

Park House Sanctuary Boarding Kennels & Cattery

Park House, Stelling Minnis CT4 6AN

Brick-Built Heated Kennels. Daily Walks ~ Reasonable Rates

Dogs must be fully inoculated. Heated Cat Chalets

Quiet Area Inspection Invited.

To book or for further information, call 01303 862622

or email lord.whisky@btinternet.com

www.lordwhisky.co.uk



Trevor Law

Electrical Installations

Serving Elham Valley for 30 years

Part P Registered

07850 970087

South East Aerial & Satellite Solutions

Digital – Freeview – Satellite – Aerials

Supply and fit of quality digital installations, FREEVIEW, SKY, aerials, poor reception and problem solving, upgrades and repairs by fully accredited engineers

Free quotations and advice, fixed prices, fully insured

NO CALL-OUT CHARGE



07825 168010
01303 862361



Based in Etchinghill, I provide a personalised service with a one-off, flat fee of £180 to prepare & submit your Tax Return. No hidden costs.

FMAAT Licensed Accountant, fully insured and HMRC-authorized.

Contact Anita:

07361 238744 or aabookkeepingervicesaadams@gmail.com

Richard's Barbershop

4 Station Road, Lyminge CT18 8HP

Open: Tuesday 8am - 1pm Thursday 8am - 1pm
 Wednesday 1.30pm - 6pm Friday 1pm - 6pm
 (Bookings only) Saturday 8am - 1pm
 (During winter, please book early appointments)

Walk in or call Richard for appointment on 07522 494969

ANDY MANNERING FLOORING

SPECIALISING IN AMTICO AND KARNDEAN LUXURY VINYL TILES

Also safety flooring, rubber flooring, etc.
 Commercial and domestic work undertaken
 No job too small. Free estimates & advice given
 Over 35 years experience & fully insured



T: 07974 347248 or 01303 863095

E: info@andymanneringflooring.com

Please visit my website for further information and feedback
www.andymanneringflooring.com



DILTON MINI SKIP HIRE

Ballast, Hardcore, Sand and Topsoil Supplied
 REGISTERED WASTE CARRIER

01303 812448 or 07799 433754

ELHAM VALLEY ELECTRICS

LOCAL, LOW COST, LOW CARBON

DOMESTIC ELECTRICIAN

All electrical needs & EV chargers. Free estimates.
 Insured and certified by NAPIT

ELHAM VALLEY ELECTRICS LTD

Call James: 07563 008202 or contact@elhamvalleyelectrics.co.uk
www.elhamvalleyelectrics.co.uk

Red Dragon I.T. Ltd.



- Windows, Mac & Linux Systems
- PC Health Checks
- Wired & Wireless Networks
- Website Design
- Graphic Design

T: 01303 723456 | E: info@rdit.co.uk | www.rdit.co.uk
 The Old Granary, Hanover Mill, Church Rd, Mersham, TN25 6NU



Rhodes Minnis Cat Sanctuary

Reg. Charity No. 262245

REHOMING & BOARDING CATTERY

- Our Sanctuary takes in and rehomes 250 unwanted cats and kittens each year. A variety of cats are always available to suitable homes.
- 5* Boarding Cattery under 2018 regulations
- We are open to visitors every day from 10am-1pm & 2-4pm. No appointment needed.

T: 01303 862 243 E: rminniscats@gmail.com f @rhodesminniscats
www.rhodesminniscatsanctuary.com

Seathwaite, Green Lane, Rhodes Minnis, Kent. CT4 6XU



Veterinary Surgery

Independently owned veterinary surgery.

Opening hours: Monday to Friday 08:00-19:00 Saturday 08:30-13:00
 24hour emergency service

TEL: 01303 764190

Hawkinge Veterinary Surgery, 9b Defiant Close, Hawkinge CT18 7SU
www.hawkingevetsurgery.co.uk



Tree Work - Hedge Cutting - Lawn Mowing
 Pruning - Garden Maintenance
 Garden Waste Clearance...
 ...and so much more!

Thoughtful garden care,
 local to you.

hello@foxandoak.co.uk
www.foxandoak.co.uk
 07793 061380

31



ROBERT KENT Cert.fp FUNERAL DIRECTOR

Direct Cremation

£999

Fair Priced Cremation

£1950

ONE FIXED PRICE INCLUDING ALL CREMATION FEES

01303 684062

RKFUNERALS.COM

Computer support & repairs by local people

Customer service is our priority

- * Remote IT support for business or home
- * New & refurbished sales
- * Call-outs for business or domestic users
- * Preventative maintenance & upgrades
- * Repairs to most phones, tablets & devices

enquiries@thecomputerpeopleltd.co.uk



Church Approach,
 New Romney,
 TN28 8AS
 01797 363385

HURST INTERIORS

07732 603 415
 max@hurstinteriors.com
 @hurstinteriors

Please get in touch for
 free advice and quotation

Bespoke Joinery

Doors - Windows - Built-in Furniture

Sliding Sash and Casement Windows

Bespoke Front Door made to match original

Made to Measure Wardrobes and Understairs Storage

All work is completely bespoke

Workshop based in Mersham and covers the Kent area

Tressenden Designs

A seamstress and costume maker with
 8 years of experience.

- ♦ Clothing alterations ♦ Repair work undertaken
- ♦ Made-to-measure; create a bespoke piece for those special occasions
- ♦ Modern and vintage designs ♦ Costumes, ball gowns and wedding dresses

For more information or a quote please contact Amy:
 Mobile: 07853 202304 Email: amy.louise.ford@hotmail.co.uk





T.M. GRIGGS

01303 489795 07854 098395
tobystreesurgery@gmail.com

**Garden Clearance - Turfing - Hedge Cutting
Tree Work - Stump Grinding - Fence Repair**



Freshlook Gardens

Regular lawn mowing service. Garden design. Hard and soft landscaping. General garden work, fencing and decking. Turfing hedge cutting, small and medium tree work. Water features, ponds and patios.

Established since 1990. Fully insured.
For free quotation ring Danny Scott

01233 329610 or 07795 510093 mrdanscott89@gmail.com

Computer Repairs

01303 241 325
07968 129902

PCs, MACs, Laptops, Tablets & Printers
Upgrades & Repairs, Internet & Email, Virus Removal,
Office Setup, Backup & Recovery & much more...

Tuition available by a qualified tutor.

Usual Fee **£55**

Websites built & hosted from £10 per month

See www.computers-in-kent.co.uk for details



DYNO-ROD



We've been unblocking
sinks, drains & toilets in
Kent since 1965

- Quick Response
- CCTV Drain Inspections
- Drainage Repairs
- Pre-purchase Surveys

For a FREE no obligation
quote contact
Mark or Peter on

01233 621108
07557 616630

THE HANDY FELLOW

**A TRUSTED
LOCAL
SERVICE**



**CALL
07534
485049**

ONE.HANDY.FELLOW@MAIL.COM



General Landscaping Including
Fencing • Turfing • Paving

Gavin Allfree

T 07495 299711 E gavinallfree@gmail.com



All aspects of
Tree Work
undertaken.
NPTC Qualified.
Fully insured.
Please call **Sam**
for a free quote:
07963 203564

LOCAL TRADESMAN J Tappenden



Established over 40 years ago
Painter/Decorator

01303 862467
07775 578008

DAVID HAIME

ARCHITECTURAL TECHNOLOGIST
BUILDING TECHNICAL DESIGN
AND CONSTRUCTION
DRAWING SERVICES.
PROJECT MANAGEMENT



Chartered Institute of Architectural Technologists

- BUILDING PLANS FROM PORCH TO NEW BUILD.
- PLANNING/BUILDING CONTROL/STRUCTURAL CALCS.
- COVERING KENT/SUSSEX/SURREY.

LYMINGE, KENT CT18 8HA
TEL: 07974 156510
EMAIL: d.haime@btinternet.com

Jackson Plumbing Property Maintenance

Complete bathrooms and tiling
No job too small. Special rates for OAP's.

**Telephone: home/evening 01303 270691
or daytime 07773 089398 or 07864 929826**

Hamilton Windows & Doors New joinery, restoration, double glazing of old and existing timber windows

Bring your windows and doors back to life and get rid of cold draughts, or replace them with beautiful new ones.

Joiner/carpenter with many years of experience.

Based in Lyminge, please feel free to call for more information.

07792 901266 Alex_b_hamilton@live.co.uk



JBS BUILDERS

Specialising in Brickwork, Fencing, Landscape Gardening.
Tree work undertaken (lopping, felling and clearing).
General household repairs, painting, plastering, power jetting & cleaning.
No job too small!! All work guaranteed and insured.



For free advice and quotations please call: 07825 168010/ 01303862361 (anytime)

FINANCIAL PLANNING

David Gridley - Chartered Financial Planner

Range of quality advice from a fully qualified adviser:
Pre- and Post-Retirement Planning
Investment Planning - Inheritance Tax Planning

For further information, please contact our Lyminge office
David Gridley FPFS

Tel: 01303 863959 Email: davidgridley@sjpgp.co.uk

Ashman
Consulting
Limited

Straightforward I.T.
Advice - Training
Solutions - Support

Steve Ashman
(07702) 641981
info@ashman-consulting.co.uk



Sunhouse Electrical

Your local reliable Electrician. Part B Registered with NICEIC
On Competent Persons Register & Fully Insured

For a free quotation call James on 01303 766333

www.sunhouse-electrical.com



Lou Lloyd
CARPENTER

loulloyd@rocketmail.com

07984 426214

Lou Lloyd
CARPENTER

Kitchens, Flooring, Wardrobes,
Doors, Decking and more!



D & S DOUBLE GLAZING SERVICES

We are a local company that specialise in double glazing repairs
offering a wide range of service's that include: Replacement
double glazed units - Locks - Hinges - Handles - Rubber Seals - Gaskets.

FOR A FREE ESTIMATE PLEASE CALL: 07912 317915 OR 01303 863689
OR EMAIL: DSDOUBLEGLAZINGSERVICES@GMAIL.COM

SCRUBBERS - Est. 1988

THE HOME AND COMMERCIAL CLEANERS

One off, regular or moving day 'Blitz'
Oven cleaning - Ironing
Carpet cleaning and more...
For a friendly and reliable service
Free Estimates

Tel: 01303 249288 or 07834 128671



Acrise Electrical Services Limited Design - Install - Maintain

Tel: 01303 656007 Mob: 07803 421240 Email: info@acrise-electrical.co.uk Website: acrise-electrical.co.uk

Domestic, commercial, industrial & agricultural electricians
serving the Elham Valley and surroundings.

MWH

Window and gutter cleaning service

Mark Haley



Lyminge and surrounding areas

For a free no obligation quote, please contact me

Mobile: 07738 479202 Home: 01303 863702

Email: haleymark161@gmail.com



T. METCALFE FENCING CONTRACTORS

Approved Expert Installer for Jacksons Fencing
Established over 30 years. Fully insured. Highly experienced teams



Panel fencing, gates, decking, pergolas, post & rail,
stock fencing, security, landscaping & tree surgery

01303 840201

metcalfefencing@btinternet.com

Proprietor - Derek Burr
Ash Ridge House, Elham



Fincham Plumbing & Heating

We specialise in bathroom remodelling, including all tiling & pipework
Natural gas boiler servicing, Installation, Maintenance, Repairs, Replacement
All your plumbing requirements

Martin is a Qualified Plumber & Gas Engineer with over 30 years experience
Gas Safe, CIPHE, WIAPI registered

Rosemary & Martin Fincham
07835 851 706 martinfincham@sky.com

Hand made curtains,
Roman blinds
& soft furnishing,
Curtain alterations

Tel: Valery Wren 01303 237755



CEDAR TREE CARE

All types of tree work undertaken

Crown lifting, crown reductions,
dismantling and removals, hedge maintenance,
pollarding, stump grinding and removal, mobile saw milling,
woodland maintenance, all year round seasoned logs available

Fully insured and NPTC qualified with over 15 years experience

Call Tom: 07769 908027 email: lynchlogs@gmail.com

City & Guilds
NPTC



All building work
undertaken.

"Built on Trust,
Focused on Quality"

07890 038645
cmcarpentry@hotmail.com

D.M.B. Plastering

All aspects undertaken

**Interior. Exterior. Plastering. Rendering. Coving.
Ceilings. Wall. Floors**

Finest quality assured. CSCS Certified.

30 years experience. Free estimates. Reliable service. Fully insured.

Call David on 07818 607209

Ewin Electrical

Contact Simon for any electrical maintenance, refurbishments or upgrades with a friendly, clean and professional approach to work

07891 103065 | info@ewinselectrical.co.uk
www.ewinselectrical.co.uk



To advertise in this space for £10.00 per month (or £100 per annum, 2 months free)

please contact

Peter Barnes

pbarnes20@icloud.com

01303863737 / 07808775302

Unisex hair salon

- ✂ Appointment not always needed
- ✂ Weddings & special occasions
- ✂ Shellac nails
- ✂ Gents welcome

**SNIPPERS & CLIPPERS**
UNISEX HAIR SALON

4 Station Road, Lyminge
Folkestone, Kent, CT18 8HP

01303 647 222

info@snippersandclippers.co.uk

Wi-Fi Find us on Google+ Facebook

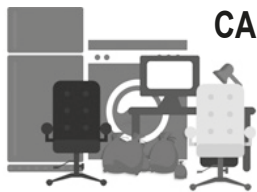
KJB GARDEN SERVICES

Weeding, Pruning, Mowing,
Hedge Cutting & General Maintenance

01303 862181 or 07704 989 402

Over 35 years experience

HOUSE CLEARANCE covering South East Kent... and beyond!



CAROL CREES CLEARANCES

Established over 30 years
Full/part house clearance

Fair prices paid

Antique/Vintage/Retro/Modern
Registered rubbish carrier

Contact Simon Cullen on 07745 421680 or sijnzo@aol.com



East Kent Foot Care

www.eastkentfootcare.co.uk

07745 532075
**Podiatry, Chiropody,
Foot Health**
Treating and managing
foot and nail conditions, corns,
callus, insoles, ingrown nails,
diabetic foot care



Total garden care for all your needs

TIM MILLETT

Grass Maintenance, General Gardening, Small & Medium
Size Tree Work, Stump Grinding and Wood chipping
Fencing Repairs & New Installations
Turfing, Hard & Soft Landscaping
Free Estimates - Fully Insured

07752 880583 Email: info@tmhorticulture.co.uk

NPC Domestic Appliance Services

Service and repair of washing machines,
tumble driers, dishwashers, cleaners and
small electrical work.

Prompt and friendly service.

Call Neil Collard 01303 892234 or
07798 716044 or find me on Yell.com



Your Local Electrician For all your electrical needs

- 18th Edition/Part P Registered
 - Insured & all work guaranteed
 - All electrical work carried out including EV charging points
 - Covering Lyminge, Etchingill & surrounding villages
- Call for a free, no obligation quote and to discuss your electrical requirements.

Head members of Checkatrade.com
Where reputation matters



07878 457018 | 01303 814372 | info@hughes-electrical.co.uk
www.hughes-electrical.co.uk

JON DAUGHTERS - Local Builder

All aspects of general building works undertaken including: roofing, kitchens, bathrooms and small extensions

Trading for over 30 years Free quotes, no obligations, fully insured

Telephone: 01303 863371 Email: daughters777@hotmail.co.uk

Out & About...

Do you have any photos of local events or groups in action? If so, can you please forward them along with a few words to pbarnes20@icloud.com



LYMINGE THEN AND NOW

Our monthly look at how Lyminge has changed over the years, with thanks to Lyminge Historical Society.

This month we are visiting Sibton Park. The house has a timber-frame core and probably dates to the early 17th Century, as there is a date stone of 1602. The house as it appears on the left shows the new frontage added towards the end of the 18th Century when the house was owned by the Honywood family, large local landowners around Lyminge, although their main seat was at Markshall in Essex.

William Honywood, younger brother of Sir John Honywood, acquired Sibton as a home for himself and his wife Mary, one of the Drake-Brockman family from Beachborough Park. After their deaths, their son William Philip continued to live at the house, and it is his funeral hatchment, together with that of his mother, that are displayed either side of the Chancel



Arch in the Parish Church. Four of his siblings are buried in the churchyard, north of the tower.

Ownership of the house was retained by the Honywoods but it was let to various tenants during the 19th Century. It was eventually sold in 1898 to John Howard, wealthy owner of a paper mill at Chartham. During the early years of the 20th Century, the grounds often played host to fetes raising funds for the church, a number



of which were opened by John Howard's step daughter-in-law the Countess of Guilford who lived locally at Waldershare. It was John Howard who added the additional floor we can see today. Sibton Park became a girls' preparatory school after the Second World War, but a falling roll forced it to close in 1996, when the house with around 40 acres of ground was sold to Holiday Property Bond. It continues today as a holiday destination, providing a regular flow of visitors to the village.

New Newsletter Advertising Charges (as from 1 November 2025)

In the mists of time (2012??), we increased the charges to advertisers using the classified ad space in the Lyminge Newsletter for businesses from £9 to £9.50 per month or £95 per annum and from £1.50 to £3 (£30pa) for charities.

With time and the increasing requests for larger advertising, these charges have changed in line with these charges. However, more recently, we have seen an increase in our circulation list from 1,650 copies to 1,750 to include the new Pentland Homes Estate and requests for further copies from China China.

In addition, we have absorbed any increased printing costs over the years, particularly when we switched to a commercial printer and yet we maintained our margins, continuing to support grant requests, donations and funding individual events. (See P6). This year our revenue for the newsletter fell slightly from £12,470 to £11,463 (-8%).

The Lyminge Association committee has therefore accepted the recommendation that our fees increase by 4% (approx). The new rates per month from 1st November are as follows:

Size	Charities	Businesses
Half front page 184 x 105mm	£45	£50
Whole internal page 194 x 288mm	£25	£50
Half page 184 x 126mm	£12.50	£25
Quarter page 89 x 126mm	£7.50	£15
Classified Ads 89 x 38mm	£5	£10

Rates for an annual advert are calculated using the monthly rate, times ten (two months free). Eg. for a quarter page business ad, one month costs £15; the annual cost £150.

We regret having to make these increases but undoubtedly we remain exceptionally competitive. **Editor**

5th November is our Review meeting, looking back at 2025 but also ahead to 2026. However, **Kent Police** will be coming along to talk about **Fraud and Scams** which seem to be on the increase in this ever-technological world.

The Committee of Lyminge Friends felt that as this talk is so important to the whole community – there will be no charge for the November meeting only and it is open to everyone. Also at the meeting will be Katie from **AK Healthcare** to speak about **Osteopathy** and what it has to offer and answer any questions you may have.

Everyone welcome – No charge for this meeting only (including tea/coffee)

On 10th December we will be hosting a Christmas Lunch for our members at St. Mary & St Ethelburga Church.

We are a friendly social group and welcome new members and visitors so just drop into a meeting, or if you'd like to talk to one of us first, please call 07904 157897. All meetings are held in The Methodist Church, Church Road, Lyminge from 10.30am to 12noon unless stated otherwise.

Lyminge Friends



Lyminge Friends held their "**Friend's Friday**" lunch at the Coach & Horses on 17 October which was enjoyed by all who attended.

Letter to the Editor



Many thanks for the good job on the footpath alongside Nailbourne Court. This is so much better for the likes of myself with a mobility scooter and mum's with pushchairs. Well done.
Gordon Boucher



Photos show a fraction of what was collected for Rhodes Minnis Methodist Church harvest festival which was held on 5th October. All the food and toiletries were donated to the Rainbow Centre, Folkestone. Many thanks to all those involved.