

# THE LYMINGE NEWSLETTER

For the communities of LYMINGE, ETCHINGHILL, RHODES MINNIS and POSTLING

**August 2025**  
**From The Lyminge Association**

Produced by  
THE LYMINGE ASSOCIATION  
[www.lyminge.org.uk](http://www.lyminge.org.uk)



## LYMINGE GARAGE SALE

**SUNDAY 14TH  
SEPTEMBER**

Booking forms will be available from 18th August from Snippers and Clippers, The Coffee Cabin or can be downloaded from the internet (<https://www.lyminge.org.uk/2025/06/27/august-2025-newsletter/>)

The completed forms, plus £5, need to be returned to Snippers and Clippers or The Coffee Cabin by 9th September.

**A CHANCE TO CLEAR  
THE DECKS BEFORE  
CHRISTMAS  
ARRIVES**



**DON'T MISS THIS  
CHANCE TO DE-CLUTTER**

**A GOLDEN OPPORTUNITY  
TO RECYCLE SOME OF YOUR  
UNWANTED BELONGINGS**

**ANY QUESTIONS: PLEASE CONTACT STEVE  
ON 863600 OR [STEVE@GUYATTS.COM](mailto:STEVE@GUYATTS.COM)**

# Margaret Saunders' Meanderings

Continuing with my Italian adventure... Dawn is breaking across the Spoleto Valley, heralded by birdsong and church bells and a mistiness fills the valley, where myriads of lights twinkle in the last throes of the night. Cool fresh air drifts into my room as I prepare for the day. I am having difficulty tearing myself away from the view across the valley, vast in comparison to our local Elham Valley, which is so intimate. The mountains opposite are still cloaked in a velvety-blue darkness - only pin pricks of light visible from the isolated villages which have found a place to perch. Before long the sun will rise and illuminate these villages, picking out the light stone from the darker background of forested slopes. In the stillness of the air, a thin plume of smoke is rising vertically from the flat floor of the valley.

The streets are quiet and clean – the motorised cleaner passes through all of the main streets every morning at five o'clock ensuring clean and rubbish-free streets for the many pilgrims and visitors to this small medieval city, birthplace of St Francis of Assisi. It is seven o'clock in the morning as we walk to the coach park on the lower level. Starlings babble and chatter nearby then disappear into a hole in the wall above our heads, where they have built a nest and are now feeding their young. Olive trees, growing in a small orchard tucked between buildings on the steep hillside have been pruned and the cuttings lie amongst the ancient trees. Some of these cuttings will be used at church services on Palm Sunday at the end of the week, instead of palm, as people collect a small branch, which is blessed by being sprinkled with holy water by the

priest, who then leads a procession into the church.

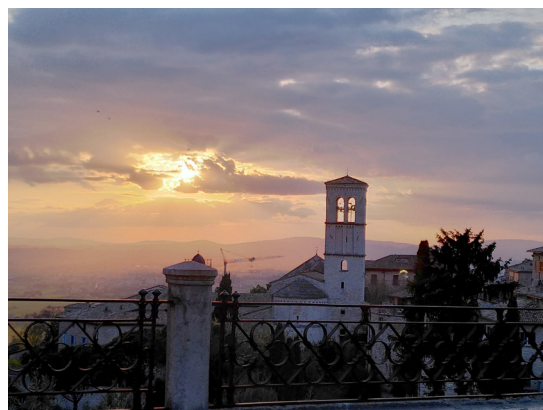
During the day the Piazza del Comune is full of visitors enjoying themselves at the tables that spill out from the many cafés surrounding the square, but at this time in the morning, all is quiet with only a handful of early morning workers hurrying to their workplaces. In a few hours, visitors will bring the place to life, with groups of teenagers gathering around the circular fountain where water spurts from the mouths of three lions – the Fontana dei Tre Leoni, which represent the three districts of Assisi. Coffee will be drunk and ice-creams eaten throughout the day as friends and family sit and chat and enjoy the sunshine. Along the walls of the houses that border the streets, small alcoves contain wall paintings depicting St Francis or some aspect of his life, the Virgin Mary holding Jesus or a similar biblical theme, as well as carvings of a secular nature. This part of town usually hosts a market along its length but today we are too early for even the stallholders. Where there are steps leading up to a doorway, pots of geraniums or other brightly coloured flowers sit on either end of each step. More pots of flowers are gathered together around doorways, in small triangles of earth and at the turn of a 'via' where small shrubs and flowers are planted. Water fountains providing drinking water abound, often with an animal face behind the water spout. After all, this city is an ancient place of pilgrimage and weary pilgrims would have needed a constant supply of water on hot days, having climbed up from the valley below.

Along the valleys pine trees,



reminiscent of umbrellas, stand singly or in groups. They are Italian stone pines otherwise known as umbrella or parasol pines due to their shape. With straight trunks, the branches begin in the upper half of the tree, fanning out like the spokes of an umbrella. When young, the top canopy is like a bushy globe, and as the tree matures, this develops into an umbrella-like shape and can grow up to sixty-five feet tall. They are striking in their pleasing form and simplicity. Cultivated since prehistoric times for their edible pine nuts, they are now used more widely as ornamental trees. The profile of these trees is in stark contrast to that of the cypress tree, which stands tall, thin and dark, like a sword pointing skywards.

As the day begins to draw to a close, rose-pink light from the sinking sun softens the scenery and the lower it sinks the deeper the colours become as it paints the sky and clouds a deeper fiery red, giving the promise of another beautiful day on the morrow.





# Diary of Forthcoming Events

This page is printed to give readers and organisers the opportunity of planning events without clashing with existing ones, which are already in the 'diary'. It is not intended as a means of advertising and we take no responsibility for errors or omissions. Acceptance is at the discretion of the editor. Please send your updates by email to [pbarnes20@icloud.com](mailto:pbarnes20@icloud.com) or via methods outlined on Page 3.

## ONE-OFF EVENTS

Date	Time	Event	Where	Tel. No.
02 August	2.30pm	Rhodes Minnis Summer Show	RMVH	
04 August	10am	Information and Advice Dropin	LL	269602
11 August	10am	Information and Advice Dropin	LL	269602
14 August	12.30pm	Dementia Cafe	EGC	269602
18 August	10am	Information and Advice Dropin	LL	269602
23 August	3pm	Dean and Haywardian Friends Concert	LMC	
24 August	9.30am	Farmers Market	LVH	
25 August	10am	Information and Advice Dropin	LL	269602
<b>14 Sept</b>	<b>9am</b>	<b>Garage Sale</b>		<b>863600</b>
17 Sept	11.30am	Singing For All		
24 Sept	11.30am	Singing For All		
<b>16 Oct</b>	<b>7.30pm</b>	<b>Lyminge Association AGM</b>	TBC	<b>863737</b>
25 Oct	7pm	Autumn Quiz	EVH	07544 670363
25 Oct	7pm	Invicta Wind Orchestra Concert	LMC	
<b>27 Nov</b>	<b>4.45pm</b>	<b>Lighting Lyminge Christmas Tree</b>	LL	
30 Nov	4.45pm	Etchinghill Christmas Lighting Event	Meridian Park	07544 670363
07 Dec	7pm	ERA AGM	EVH	07544 670363
<b>22 Dec</b>	<b>4pm Start</b>	<b>Christmas Present Delivery</b>		

## MONTHLY EVENTS

Date	Time	Event	Where	Tel. no
1st Mon	10am	Stroke Support Group	C&H	07903 150099
2nd Mon	7pm	Parish Council Meeting	LVH	07999 403948
3rd Mon	10am	Stroke Support Group	C&H	07715 221705
3rd Mon	7pm	Etchinghill Cinema Club	EVH	07544 670363
1st Tues	2pm	RBL, Elham Valley Branch	SMCHE	07734 383691
1st Tues	2.15pm	Library Reading Group	LL	0300 0413 131
1st Tues <sup>3</sup>	7.30pm	LHS Talk/Event	TC	863879
2nd Tues	2.30pm	Library Reading Group	LL	0300 0413 131
3rd Tues <sup>2</sup>	7.30pm	Gardeners' Society	TC	07703 149008
Last Tues	10.30pm	Lyminge Poetry Group	LL	0300 0413 131
1st Wed	10.30am	Lyminge Friends	TC	862598
4th Wed	2.30pm	RM Circle	RVH	864256
Last Wed	7.30pm	Quiz Night	C&H	01303 3901011
2nd Sat	10am	Postling Church, Coffee Morning	PC	863536
2nd Sat	10am	Ethelburga Quilters	EVH	
4th Sun	9.30am	Farmers' Market	LVH	

<sup>1</sup> In term time only

<sup>2</sup> Except Jan and Feb

<sup>3</sup> Except Jan, Feb, and trip in Aug

<sup>4</sup> Except Aug and Dec

<sup>5</sup> Not held in August

<sup>\*\*</sup> Every three months

## WEEKLY EVENTS

Day	Time	Event	Where	Tel. no
Mon	10am	Bridge Club	LBC	863177
Mon	10.30am	Lyminge Larks (Singing)	LMC	07951 572920
Mon	10.30am	Chromatic Greys Art Class	EVH	07783 575802
Mon	5.15pm	Pilates	EVH	07951 698008
Mon	6.30pm	Ballroom/Latin/Salsa Dancing	TC	07966 751991
Mon	6.30pm	Judo Club	LVH	07369 225021
Mon	7pm	Pilates	EVH	07951 698008
Mon	7pm	Yoga	RMV	07977 503897
Tues	9.30am	Tai Chi Qigong	EVH	07402 203239
Tues	10am	Lyminge Baby & Toddler Group	TC	07870 405567
Tues	11.45am	Pilates	EVH	07834 839801
Tues	1pm	Seated Yoga	TC	
Tues	1.45pm	Pickleball	EVH	862696
Tues	6pm	Board Games Night	CC	
Tues	6.45pm	Short Mat Bowls	LVH	863842
Tues	7pm	Bridge Club	EVH	07790 160476
Wed	10am	Pilates	TC	07825 109670
Wed	10am	Baby/Toddler Group	EVH	07817 777975
Wed	11.15am	Singing for all (term time only)	TC/LMC	269602
Wed	7.30pm	Cantores Dominicae Choir	LVH	07778 333339
Thurs	10am	Lyminge Morning Art Group	EVH	01303 211364
Thurs	10.15am	Baby Rhyme Time	LL	0300 0413 131
Thurs	2pm	Lyminge Afternoon Art Group	EVH	07870 494644
Thurs	5pm	Pilates	TC	07951 698008
Thurs	6.15pm	Pilates	TC	07951 698008
Thurs	7pm	Short Mat Bowls	LVH	863842
Thurs	7.30pm	Ballroom and Latin Dancing	EVH	07967 979610
Fri	9.15am	Nikki Barratt Art Group	EVH	07871 494644
Fri	10.15am	Talk Time	LL	0300 0413 131
Fri	6pm	Junior Cricket Training Sessions	SPCC	07869 283195
Fri	7pm	Table Tennis	EVH	

**C&H:** Coach & Horses; **EGC:** Etchinghill Golf Club; **EVH:** Etchinghill Village Hall; **ELVH:** Elham Village Hall; **ERA:** Etchinghill Residents' Association; **ES:** Elham Square; **EVL:** Elham Valley Line Trust; **JF:** Jubilee Field; **LB:** Laing Bennett; **LBC:** Bowls Club; **LL:** Library; **LMC:** Lyminge Methodist Church; **LPC:** Lyminge Parish Church; **LPS:** Lyminge Primary School; **LVH:** Lyminge Village Hall; **LW:** Lord Whisky; **NP:** Nailbourne Court; **PC:** Postling Church; **PH:** Lord Whisky, Park House; **PVH:** Postling Village Hall; **RVH:** Rhodes Minnis Village Hall; **RM:** Rhodes Minnis Church; **RMCS:** Rhodes Minnis Cat Sanctuary; **RR:** Rigden Room; **SMCHE:** St Mary's Church Hall, Elham; **SMVH:** Stelling Minnis Village Hall; **SNL:** See Newsletter for info; **SP:** Sibton Park; **SPCC:** Sibton Park Cricket Club; **TC:** Tayne Centre; **TF:** Tayne Field; **WF:** Well Field

# Church Times



## St Mary and St Ethelburga Parish Church, Lyminge

### Sunday 3rd August

Lyminge 10am WOW Service  
Paddlesworth No Service

### Sunday 10th August

Lyminge 8am Holy Communion CW2  
6pm Choral Evensong

### Friday 15th August

Elham 2.30pm VJ Day 80th Anniversary service

### Sunday 17th August

Lyminge 10am Holy Communion CW1  
Paddlesworth No Service

### Sunday 24th August

Paddlesworth No Service.  
Lyminge 10am Family Praise.

### Sunday 31st August

Swingfield 10am Benefice Holy Communion

### Sunday 7th September

Lyminge 10am WOW Service  
Paddlesworth No Service

Paddlesworth Church will be closed for repairs from 21st July until completion of work.

If more information is required please contact the Church Wardens,  
Derek Smith 01303 862508 or Mike Chinneck 01303 863911

### The Reverend Peter Ashman

The Church is sad to announce that our late Rector, the Reverend Peter Ashman passed away after a short illness on Friday 18th July. Our thoughts are with his family who have asked for privacy to absorb this blow.

Peter was the Rector of the old Lyminge Benefice of Paddlesworth, Postling and Stanford as well as Lyminge from 1999 to early 2018.

His funeral will take place at 10.30am, 1st August in the Church.

## Valley Methodist Church

A warm welcome awaits you at our services followed by a time of refreshment and fellowship in our Lyminge Church or at our small and beautiful Chapel at Rhodes Minnis.

### LYMINGE

**3rd August** 11am Rev Gill Songer (incl. Holy Communion)  
**10th August** 10.15am Valley service at **Elham** with Rev Gill Songer

**17th August** 11am Mr Tim James  
**24th August** 10.15am Valley Service at **Rhodes Minnis** with Mr Richard Blackwell

**31st August** 10.30am Circuit Service at **St. Andrew's Cheriton** with the Rev Adrian Roux and Rev Gill Songer

**ALL ARE WELCOME!**

### RHODES MINNIS

**3rd August** 9.30am Rev Gill Songer  
**10th August** 10.15am Valley Service at **Elham** Rev Gill Songer incl Holy Communion

**17th August** 9.30am A united service at **Elham** Mr Tim James

**24th August** 10.15am Valley Service at **Rhodes Minnis** Mr Richard Blackwell

**31st August** 10.30am Circuit Service at **St. Andrew's Cheriton** with the Rev Adrian Roux and Rev Gill Songer

## Postling Church Services

**3rd August** 8.30am Breakfast service

**10th August** 8.30am Morning service

**17th August** 8.30am Holy Communion

**24th August** No service in Postling

**31st August** No service in Postling

## Elham Valley Branch of The Royal British Legion and St Mary The Virgin Church, Elham

invite you to a

### Service of Thanksgiving to Commemorate VJ 80

FRIDAY 15th AUGUST 2025 at 2.30pm

in ST MARY THE VIRGIN CHURCH, ELHAM

followed by refreshments in the Church

**EVERYONE IS VERY WELCOME**

## Lyminge Newsletter

### Terms & Conditions: Copy deadline for next edition - 18 September 2025

Please email your copy to the editor ([pbarnes20@icloud.com](mailto:pbarnes20@icloud.com)). Your payment must be received before your article or advert can appear in the Newsletter. Invoices will be issued and should be paid ASAP either by BACs, cheque, credit card or cash (details on invoice). **Business adverts** cost from £9.50 per month or £95.00 per year. **Personal and charity adverts and articles** from £3 per month, or £30.00 per year. The annual rate offers 12 entries for the price of 10. Please make cheques payable to '**The Lyminge Association**'. If you do not have email, a typed paper-copy may be left with the payment at the Library. The Newsletter is printed by Canterbury Print & Mail.

*The Lyminge Association accepts no liability for the accuracy of the advertisements or subsequent actions arising in conjunction with advertisers in the newsletter.*

**Further details from Peter Barnes (editor) on 01303 863737 or [pbarnes20@icloud.com](mailto:pbarnes20@icloud.com)**



# Etchinghill Update - August 2025



## **ETCHINGHILL RESIDENTS' ASSOCIATION (ERA)**

Chairman: David McCombe

- 07939 076617 E-mail:

[dmccombel@gmail.com](mailto:dmccombel@gmail.com)

Website: [www.etchinghill.info](http://www.etchinghill.info)

Facebook: Etchinghill Residents

**ERA FILM NIGHT - Etchinghill Village Hall - PLEASE NOTE DATE CHANGE DUE TO HALL REDECORATION - WEDNESDAY 13th AUGUST - Doors open at 7pm for a 7.30pm start - 'MR BURTON' 12A - 2024 - run time 2 hrs. 4 mins.**

Stars Toby Jones, Harry Lawtey, Aimee-Ffion Edwards and Lesley Manville. The story of the wild school boy Rich Jenkins, son of a boozy miner and the English teacher who recognised his talent, Philip Burton. A moving, untold story of how Rich Jenkins became Richard Burton, the biggest star Wales has ever produced. Entry fee is only £6pp and includes a glass of wine, tea or coffee with biscuits on arrival and entry into a free raffle. There will be an intermission approximately halfway through the film when refreshments will be served. New members are welcome, simply register and pay on the night, there's no need to book.

**ETCHINGHILL & LYMINGE PARISH NEIGHBOURHOOD PLAN** – David McCombe (ERA Chair) is now part of the Neighbourhood Plan Advisory Committee (NPAC) with Roger Joyce (local resident and architect) as Chair of the Etchinghill Working Group (EWG). Unfortunately, due to holiday commitments, EWG had no representative at the last NPAC meeting held by LPC on 1st July, and only 2 people attended the EWG meeting

on 30th June, so we cannot report further at present. The EWG intends arranging a village 'walk round' taking in the Conservation Area, to give residents an idea of what might be involved in the work of the EWG going forward. The proposed date is Saturday 6th September, meeting at 10am at the Village Hall and finishing around 12noon for refreshments in The Gatekeeper.

The EWG plans to meet in Etchinghill Village Hall's committee room from 6pm on the last

Monday of every Month. If you wish to join the EWG and be involved in the Neighbourhood Plan, please contact Roger Joyce by email: [Roger@rogerjoyceassociates.co.uk](mailto:Roger@rogerjoyceassociates.co.uk) or David McCombe (as above). The agenda and minutes of LPC meetings can be found on the LPC website <https://www.lymingeparishcouncil.org.uk>.

**KENT SURREY SUSSEX AIR AMBULANCE CHARITY** – The ERA's 2024 Spring Quiz raised £250 which was donated to the KSSAA charity to assist in the purchase of a new aircraft. 'Etchinghill Residents' is now proudly displayed on helicopter G-KSST as a permanent dedication – thank you to everyone who contributed. A copy of the certificate from the charity will be circulated via the ERA's Facebook and website pages, and displayed in the village hall in due course.

## **ETCHINGHILL VILLAGE HALL (Charity 302736)**

Chairman: John White

Bookings: Anna Allan 07514 758936, E-mail: [d.allan142@btinternet.com](mailto:d.allan142@btinternet.com)

Facebook: Etchinghill Village Hall Kent

The hall will be closed from Sunday 17th August until Sunday 24th August for the main hall and stage area to be painted.

**News contact: Karen Hickman – 07521 372477 or email: [kdhickman@me.com](mailto:kdhickman@me.com)**

**ETCHINGHILL RESIDENTS' ASSOCIATION**

**Film Night**

**WEDNESDAY 13th August**  
(Note Date Change)

**"Mr Burton"**  
12A (2024) - Run Time: 2hrs 4mins

**Etchinghill Village Hall - 7pm for 7.30pm**  
Entrance Fee £6pp. Open to new and existing members  
Free Refreshments and Raffle

[www.etchinghill.info](http://www.etchinghill.info)

# District Councillors' update

## – August 2025

Full council has agreed the district council's Corporate Plan for 2025 to 2030. Our District, Our World sets out the vision and direction for the council for the next 5 years. Town and parish councils took part in the consultation along with residents and businesses. The plan focuses on five themes each of these has a list of actions and progress will be regularly monitored through an action plan. The corporate plan is available on the council website.

The newly elected KCC councillors for our district visited key projects the district council is undertaking. They went to Otterpool Park and discussed the proposed new garden town and the collaboration work with Homes England. They stopped at Folca to discuss the future options being explored for the former store. They finished at the Folkestone Sports Centre talking to representatives of The Sports Trust.

On another matter, the swimming pool at The Sports Trust in Folkestone should be reopening some time next year.

Roadworks continue in preparation for the Folkestone – A Brighter Future project. There are many changes happening and you can sign up for email updates and development progress by visiting <https://www.folkestone-hythe.gov.uk/folkestone-place-plan/folkestone-brighter-future-project> and filling in

your email address.

Please can I remind you to look out for Asian hornets. There have been several spotted in Hythe, Saltwood and Sandgate, so getting closer to where we live. They pose a threat to other pollinators including dragonflies, honey bees etc. A key feature is the orange head and the abdomen is entirely dark apart from the 4th segment which is yellow. If you spot any, please try to take a picture and report it to [alert\\_nonnative@ceh.co.uk](mailto:alert_nonnative@ceh.co.uk).

**Contact:** Elaine Martin

[elaine.martin@folkestone-hythe.gov.uk](mailto:elaine.martin@folkestone-hythe.gov.uk)

**Planning Application 25/0232/FH** for the erection of a replacement dwelling at Middle Park Green Lane has been approved.

**Ward Budget** – just a reminder that I have small amounts of money in my Ward Budget to help village organisations with resources.

**Rural Prosperity Fund** - An allocation of just under £180,000 from central government via the Rural England Prosperity Fund (REPF) has been granted to Folkestone & Hythe District Council. For Communities and ventures that will improve local facilities and amenities specifically aimed at enhancing physical, cultural and social ties will be considered.

### Council Tax Reduction Scheme –

A consultation on a change in rates from 2025/26 will open on 4 August. The consultation will specifically target a sample of approximately 5,500 Council Tax payers and will be web based and on social media. The consultation closes on the 26 October 2025.

**Otterpool Park** – the Council remain in close contact with Homes England and we are waiting to have an update on the way forward.

**Folca 1 and Folca 2** – (previously the Debenhams building). Unfortunately, Folca 1 which was to become a state of the art medical centre has been deemed currently unviable. The District Council has therefore produced a report with a range of options but are recommending that Folca 1 be put up for sale on the open market. Folca 2 is intended to be retained by the District Council with some works carried out to bring it back to life. Talks are continuing to provide a Medical facility in Folca 2 for local GP practices. You can listen to the Cabinet debate on this issue webcast on the council's website at <https://folkestone-hythe.public-i.tv/core/portal/home>

**Contact:** Jenny Hollingsbee

[jenny.hollingsbee@folkestone-hythe.gov.uk](mailto:jenny.hollingsbee@folkestone-hythe.gov.uk)

## Auntie Win

Dear Auntie Win  
at ninety three  
keeps looking across  
and muttering at me.

She's sitting as usual  
in her favourite place  
busily knitting at a  
phenomenal pace.

It's bitterly cold  
and the torrential rain-  
she simply ignores and  
treats with disdain.

She's not very happy  
with me poor dear -  
I'm not her favourite  
nephew that's clear.

She's a tough old lady  
is my Auntie Win  
but she'll drown out  
there if I don't let her in!!

Written by:

JT Sandgate Creative Circle  
Tel - 07435580028







**Girlguiding**

**Lyminge**

**We help all girls know  
they can do anything**

**We are having a session for any girls who are interested in joining Guides and Brownies on 27<sup>th</sup> September. It is from 10am to 12pm and is at Lyminge Scout Hall CT18 8EH. Come and meet the leaders. There will also be a chance for girls to try out some typical Brownie and Guide activities**

**If you are interested in volunteering, come and talk to us about how you could help. The more volunteers we have the more we can do, such as offer activities for girls of Rainbow and Ranger age.**

**Any queries please email:  
hazelmsargent@gmail.com**

# Summer Show

**At Rhodes Minnis**



**Village Hall**



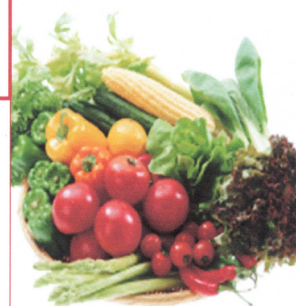
**Saturday 2nd August**

**Opens 2:30 pm**

**Prizegiving 4:00pm**

**Entries From 8:30am –  
10:30am**

**Refreshments  
Viewing Free  
Raffle**



**SCHEDULES available Tel: 01303 862616**

**<https://rmvh.org.uk/>**

**Charity No.800345**



## Autumn Meditation Course BOOKING NOW

8 sessions from Saturday 4 October 2025

(1 per week)

1.30pm - 4pm

Location: Harry Margary Hall

Lympne Village

CT21 4LE

Learn some new skills to support  
your health and wellbeing

**Contact Ellen for more information or to book**

Call: 07740857109

Email: [ejgarrard2712@gmail.com](mailto:ejgarrard2712@gmail.com)

Visit: <https://ellengarrard.co.uk>



# Footprints

Children's Musculoskeletal &  
Orthopaedic Physiotherapy

**I am an Advanced Practice  
Children's Physiotherapist in  
Musculoskeletal and Orthopaedics,  
specialising in children between  
the ages of 0-16 years.**

**Please get in touch for more  
information on how I may be able to  
help your little one.**

**Call Lucy: 07841 518234**

**[lucy@footprintschildrensphysio.co.uk](mailto:lucy@footprintschildrensphysio.co.uk)**

**[www.footprintschildrensphysio.co.uk](http://www.footprintschildrensphysio.co.uk)**



# POSTLING GLASSBLOWING

## Postling Glassblowing

*A Bespoke Glass Blowing  
Experience*

Come and enjoy blowing some  
glass to create your own piece.

**Please contact us for further  
information:**

(07951) 628173

postlingglassblowing@gmail.com

Inst: @postlingglassblowing



PIC-COLLAGE

## Your Local Pharmacy

*Lyminge  
Pharmacy*

- NHS & Private Prescriptions
- Travel and Speciality Vaccination Clinic
- Weight Loss Clinic
- FREE Delivery Available
- Private Prescriber Available
- Emergency Medication Supply
- NHS Flu & Covid Vaccinations
- Free Blood Pressure Checks
- Pharmacy First Service
- ONE YOU Stop Smoking Provider



Delivering prescriptions to  
the local community of  
Lyminge, Elham, Etchinghill,  
Postling, Hythe, Rhodes Minnis,  
Stelling Minnis and the  
surrounding areas

Ask a member of staff  
to learn more

Contact us at

Tel: 01303 862425

Email: lymingefomed@gmail.com

Or come in to the store:  
21 Station Rd, Lyminge, Folkestone  
CT18 8HQ

## LYMINGE GARAGE SALE - SUNDAY 14 SEPTEMBER



## NO MEETING IN AUGUST

**Our Autumn Programme will include:**

**16<sup>th</sup> September – “A Look at Pruning – The  
how and when and why” by Kevin Tooher**

**21<sup>st</sup> October – “Herbs – culinary,  
cultivation & folklore” by Jacqueline  
Aviolet**

**18<sup>th</sup> November – Gardener's Question Time  
with Steve and Derek from Farthing  
Common Plant Centre**

*Non-Members very welcome*

For more information about the Gardeners' Society please email:  
lymingegardeners@gmail.com  
or call Anne on 07703 14900



# FABRIC

CONSTRUCTION GROUP

**SPECIALISTS IN PERIOD  
PROPERTY BUILDING &  
MAINTENANCE**

OVER 20 YEARS EXPERIENCE ACROSS  
ALL ASPECTS OF MAINTENANCE TO PERIOD  
PROPERTIES USING TRADITIONAL  
METHODS AND MATERIALS

CONTACT US TO DISCUSS YOUR PROJECT  
EMAIL: INFO@FABRICCONSTRUCTIONGROUP.CO.UK  
CALL: 07912 757311

WWW.FABRICCONSTRUCTIONGROUP.CO.UK





*Minimise Pain*

*Optimise Mobility*

*Enhance Your Health*

Welcome to AK Healthcare – Your Trusted Osteopathic Clinic in Lyminge.

Since 2011, Adam and Katie have been dedicated to bringing relief and mobility to the Elham Valley community. At AK Healthcare, we believe in a holistic approach to health, focusing on treating the whole person, not just the symptoms. Our experienced Osteopaths use gentle and effective techniques to address a variety of conditions, from back pain and sports injuries to arthritic pain and beyond. Our commitment is to help you achieve optimal health and well-being in a warm, welcoming environment.

Visit us today and experience the difference that personalized care can make for you. Your path to a healthier life starts here!

Contact us to book your appointment today!

[www.AKHealthcare.org.uk](http://www.AKHealthcare.org.uk)

07904311554

Or scan the QR code below:



IN AID OF  
**Lord Whisky Animal Sanctuary Fund**  
CHARITY NUMBER: 283483

JOIN US FOR OUR  
**Boot & Late Summer Fayre**

**GATES OPEN 8am**

**SATURDAY 9<sup>TH</sup> AUGUST**  
PARK HOUSE, STELLING MINNIS, NR CANTERBURY  
CT4 6AN



CARS: £10 VANS: £15 (BOOT FAYRE SELLERS)

**DONATION ON ENTRY PLEASE**

HOT & COLD REFRESHMENTS    ENTERTAINMENT FOR THE WHOLE FAMILY  
ICE CREAM VAN    FACE PAINTING

PLEASE JOIN US FOR A WONDERFUL DAY OUT WITH PLENTY OF FUN AND HELP SUPPORT OUR SANCTUARY. ALL FUNDS RAISED WILL GO DIRECTLY TOWARDS FOOD, CARE & TREATMENT FOR OUR ANIMALS.

 **WWW.LORDWHISKY.CO.UK**  
**WWW.LORD.WHISKY@BTINTERNET.COM**  
**01303 862622**

IN AID OF  
**Lord Whisky Animal Sanctuary Fund**  
CHARITY NUMBER: 283483

JOIN US FOR OUR  
**Boot & Autumn Fayre**

**GATES OPEN 8am**

**SATURDAY 13<sup>th</sup> September**  
PARK HOUSE, STELLING MINNIS, NR CANTERBURY  
CT4 6AN

CARS: £10 VANS: £15 (BOOT FAYRE SELLERS)

**DONATION ON ENTRY PLEASE**

- HOT & COLD REFRESHMENTS
- ICE CREAM VAN
- CANTERBURY PIPE BAND
- ENTERTAINMENT FOR THE WHOLE FAMILY
- FACE PAINTING
- PUNCH & JUDY



PLEASE JOIN US FOR A WONDERFUL DAY OUT WITH PLENTY OF FUN AND HELP SUPPORT OUR SANCTUARY. ALL FUNDS RAISED WILL GO DIRECTLY TOWARDS FOOD, CARE & TREATMENT FOR OUR ANIMALS.

 **WWW.LORDWHISKY.CO.UK**  
**WWW.LORD.WHISKY@BTINTERNET.COM**  
**01303 862622**

 **ROYAL BRITISH LEGION**



**ELHAM VALLEY BRANCH and ST MARY THE VIRGIN CHURCH, ELHAM**

invite you to a

**A Service of Thanksgiving to Commemorate VJ 80**

On

**FRIDAY 15<sup>th</sup> AUGUST 2025**

At 2.30pm

in

**ST MARY THE VIRGIN CHURCH, ELHAM**

**Followed by refreshments in the Church**

**EVERYONE IS VERY WELCOME**

## Change is afoot...

The newsletter is currently undergoing a soft redesign to improve its appearance and make it more modern looking and easier to read.

Over the next few months, the pages will gradually change slightly in layout and design, but be reassured, the content will remain much the same.

I'm very grateful for the help and support being given by Jo Legg of Flair Creative Design. She is a self-employed graphic designer who lives in Lyminge.

**Jo Legg**

**Flair Creative Design**

**Email: jo.legg@flair-design.co.uk**

**Tel: 07306 48216**



Many thanks Jo - your support is most welcome.

*Peter* (editor)



# Lyminge Friends

On **Wednesday, 6th August** Lyminge Friends will be hosting a **Summer Lunch** which is being held in Lyminge Church and Gardens, hopefully the weather will be good to us. **The cost is £10 which includes food and a glass of wine/soft drinks.** There will also be a raffle with some fantastic prizes.

Our talk on **Wednesday, 3rd September** will be **"Behind the Scenes of Television's Golden Years – a light hearted look"** and the speaker is **Wilf Lower.**

**Everyone welcome  
Entry is £4  
for Social Meetings  
(including Tea/Coffee)**

*We are a friendly social group and welcome new members and visitors - so just drop into a meeting, or if you'd like to talk to one of us first, please call 07904157897. All meetings are held in The Methodist Church, Church Road, Lyminge from 10.30am to 12noon unless stated otherwise.*

## MUSIC ON A FRIDAY

.....wishes to thank ALL who attended our concert on the 27th June at Lyminge Parish Church and to all the helpers and particularly the talented performers.

We are pleased to report that a donation of over £300 will be given to Lyminge Primary School. Thank you all so very much.

## Fifth Trust Update

[www.fifthtrust.co.uk](http://www.fifthtrust.co.uk)

### Art exhibition – Saturday 30 August.

We're delighted to invite you to our students' art exhibition on Saturday **30 August, from 9.30am to 12.30pm** at our Barham Skills Centre (off Green Hills, turn left at the school).



We currently have several vacancies and would love to hear from anyone who might be interested in joining our team:

**Educational Lead** – Responsible for leading and further developing our training programme for adults with learning disabilities.

**Carer (Maternity Cover)** – Provide person-centred, compassionate support to our students, assisting them in their daily activities and encouraging independence.

**Garden Services Instructor** – Deliver engaging, practical horticulture sessions while supporting students in developing gardening and maintenance skills. To view the full job descriptions and apply please visit: <https://tinyurl.com/5n7e7r3e>

## Letters To The Editor

### *The Baffled Thoughts of an Elderly Lyminge Resident*

Use the side of the road that has the pavement, they say. So I obediently cross Canterbury Road, plod along, and arrive in Station Road. Where to cross? I want to go to the Library but the dropped kerb is too near the bend and there is almost always a large car parked outside Laing Bennett. Consequently, the oncoming traffic on the straight road beyond cannot be seen.

Where should I cross? There is no opposing dropped kerb further down. I want to go to the Library, or post a letter, and am so tempted to defy my friends and return to the non-pavement side of Canterbury Road. I felt much safer.

Of course, I should also have mentioned that a great number of the increasingly large cars through the village are undoubtedly disregarding the 30mph speed restriction.

*Paddy Fraser*

### *Dog Fouling of Footpaths*

Somebody is allowing their dog/dogs to foul the footpaths around Coltsden field, Skeete early in the morning. In some places the footpath is very narrow and the fouling makes walking difficult.

All of the footpaths in this area cross private land.

Please clean up after your dog. Not doing so is an offence on any land that is accessed by the public. It is also extremely anti-social.

*Peter*



### Cyber safety presentations/ Cyber escape rooms

Learn how to stay safe online with our Cyber safety presentation or Cyber Escape rooms. Our calendar is back open for bookings. I will personally come to your businesses, organisations, schools or groups to deliver an engaging and impactful session tailored to your needs. The presentations aim to give simple tips to protect yourself and organisations from any online threats such as scams and hacking. These sessions makes talking about online safety easy to understand as well as give you the tools to keep yourself safe while online.

If you would like to learn more about how to book a session for the rest of 2025, then please email me on: [61736@kent.police.uk](mailto:61736@kent.police.uk)



**Message Sent By**  
Arran Ostridge

(Kent Police, Prevent and Protect Cyber Officer, Serious Crime Directorate)



Registered Charity 295563

Open 10am to 4pm  
every weekend

## COUNTRY FAIR 16th AUGUST

*Traditional style Country Fair  
with all the fun and games  
and visiting attractions.*

**FUN FOR ALL**

[www.elhamvalleylinetrust.org](http://www.elhamvalleylinetrust.org)  
[www.facebook.com/  
ElhamValleyLineTrust.Official](https://www.facebook.com/ElhamValleyLineTrust.Official)



## LYMINGE HISTORICAL SOCIETY

Our next meeting will be at 7.30pm on Tuesday 2 September  
at The Tayne Centre, Church Road, Lyminge CT18 8JA



### Engineering Richborough

*Speaker: Colin Varrall*

Members Free

New members and visitors are always welcome

Visitors: £5 Payable on the door

All our publications are on sale at our meetings,  
at Lyminge Library and at Lyminge Village Store

#### FORTHCOMING MEETINGS

Our monthly meetings for 2025 will continue with:

7 October: 30 Years of Bother on the Hover – Brian Laverick-Smith

4 November: A History of Canterbury in a little less than 100 objects – Martin Crowther

2 December: Jane Austen in Kent – John Buss (preceded by the AGM)

## Lyminge Methodist Church

# Concert

## Music for a Summer's Day

## Dean Hayward & Friends

### Saturday 23<sup>rd</sup> August 3pm

*Retiring Collection in aid of  
church funds*

### Molly Walker

The family of the late Molly Walker would like to thank everyone who kindly attended our mother's funeral at St. Mary & St. Ethelburga Church and for donations gratefully received for Cancer Research. We appreciate the friends Mum has made over the 60 years she lived in the Village and she will be greatly missed.

### ALLEN

#### Maureen Lily (formerly Matcham)

Sadly passed away on 27th June, aged 83. Much loved Mum, Grandma and Sister.

Funeral was held at Hawkinge Crematorium on 21st July. Ashes will be interred in Lyminge at a later date.

**All enquiries to Hambrook and Johns, Cheriton**

**01303 271389**

*Kingdom*  
CARPET CO.

- Carpets Supplied & Fitted
- Carpets Professionally Cleaned
- Carpets Whip Edged & Cotton Bound

Whatever your carpet need, give us a call for a  
**FREE** estimate / assessment.

Over 50 years combined experience.

**07943 764 442**

Email: [kingdom.carpet.co@gmail.com](mailto:kingdom.carpet.co@gmail.com)

### Update from the Lyminge Community Hub

Following our successful application to declare Jubilee House as an Asset of Community Value we had expected Folkestone and Hythe DC to engage with us somewhat more than has happened. The ACV creates the simple right of opportunity to acquire the building as and when it might be sold. However, and especially since the building is owned by the council, it does surely place a moral value on the building particularly as it has been a community centre for nearly 50 years (confirmed by F&HDC).

The web site [www.Lymingecommunityhub.org](http://www.Lymingecommunityhub.org) is a work in progress. The ACV evaluation by the council is on the site - scroll down and the full case for its existence and history is all there. At this time the council will not engage further until it has reviewed its options, now expected by October.

We are working on various strategies to encourage the council to accept proposals in the meantime. It would be most helpful if there were a member of the community with any experience and knowledge of social infrastructures and the development of community outcomes. The government green paper includes us in an area of high community development need. A committee member to support our communication on this issue to Folkestone and Hythe DC would be very constructive.



# LYMINGE AND ELHAM VALLEY STROKE SUPPORT

Have you or  
someone  
you know  
been  
affected by  
a stroke?

Come and join our informal support  
group (no membership fees to pay).  
We usually meet on the 1<sup>st</sup> and 3<sup>rd</sup>  
Mondays of the month between  
10:00am and Noon  
at The Coach & Horses, Lyminge

New faces very welcome

**August  
Dates**

**4<sup>th</sup> August**

**18<sup>th</sup> August**

For more information, to check the dates of meetings/events, or if  
you would like support but are unable to attend the meetings  
Email: [Lymingestrokesocial@gmail.com](mailto:Lymingestrokesocial@gmail.com)  
or Telephone Fran on 07846 177 409 or Heather on 07427 664 084

FOLKESTONE HYTHE OPERATIC AND  
DRAMATIC SOCIETY PRESENTS

# COME FROM AWAY

BOOK, MUSIC AND LYRICS BY  
IRENE SANKOFF AND DAVID HEIN

FRIDAY 12<sup>TH</sup> & SATURDAY 13<sup>TH</sup> SEPTEMBER  
FRIDAY 19<sup>TH</sup> & SATURDAY 20<sup>TH</sup> SEPTEMBER  
(TWO PERFORMANCES ON THE 13<sup>TH</sup> & 20<sup>TH</sup>)



THE  
TOWER  
THEATRE

[TOWERTHEATREFOLKESTONE.CO.UK](http://TOWERTHEATREFOLKESTONE.CO.UK)

This amateur production is presented by arrangement with Music Theatre International  
All authorised performance materials are also supplied by MTI [www.mtishows.co.uk](http://www.mtishows.co.uk)

A FHODS  
FOLKESTONE HYTHE OPERATIC AND  
DRAMATIC SOCIETY



Every 4th Sunday  
9.30 - 12.30

## LYMINGE ARTISAN & FARMERS MARKET

25 May  
22 June  
27 July  
**24 August**

LYMINGE VILLAGE HALL  
WOODLAND ROAD CT18 8EW

**Freshly Prepared  
Breakfasts & Light Lunches  
Home Baked Cakes  
Vintage Afternoon Teas  
Coffees Teas  
Takeaway Available  
Private Functions**

Open Tuesday to Friday  
9am - 3pm  
Saturdays, open 8.30am - 1.30pm  
(breakfasts only)  
Dog Friendly

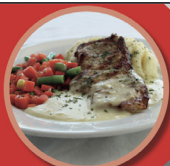
THE COFFEE CABIN TEA ROOM LTD.  
CANTERBURY ROAD, LYMINGE, KENT.  
CT18 8HU. 01303 864222  
Instagram @thecoffeecabintearoomltd  
Find us on Google Maps



## Community Meals

Our Community Meal service is available 365 days a year and has been a vital lifeline to many older people. The service provides a freshly prepared two course meal at lunchtime, hot and ready to eat.

Our hot lunch comes with a home cooked dessert and an optional tea time pack can be added.



## Wellbeing activities & Day services

A varied programme of activities offered both morning and afternoon, e.g. seated exercise, new age curling, art, singing and much more. The opportunity to enjoy our cafes and other hub spaces if you would rather not take part in the main activity of the day.

If you don't want to spend the whole day with us, why not join one of our shorter social activities groups. We offer a wide range of pursuits including exercise, singing and music, crafting, Bingo and games.



## Dementia Services

Our tailored services are designed to assist and support you at every stage of living with dementia, regardless of age. Our Dementia Support Workers are experienced in their field and work collaboratively with local health services to ensure support is given at the right level. They also help those close to you in coping with the changes they might be experiencing (in the Hythe and surrounding areas only).



## Information and Advice

As we get older the situation for us and the ones we care for is likely to change. Age UK has a team of expert Information and Advice Officers who are able to help you navigate through those changes and ensure that you receive adequate support.

The team can help with Maximising your income, Help with form filling, Care and support advice & Signposting. Whatever you need, call, and see how we can help.



## Support at home (Housework)

Offering a range of services, our aim is to support you to live as independently as possible for as long as possible. Our support staff can visit to assist you with tasks that might have become more difficult, for example, light housework including changing bed and laundry, preparing your lunch or support getting shopping.



For more details please contact:  
**Age UK Hythe, Lyminge and Ashford** 01303 269602  
[www.ageuk.org.uk/hythelymingeashford/](http://www.ageuk.org.uk/hythelymingeashford/)

Registered charity number 1125274. Company number 6589817. © Age UK Hythe, Lyminge and Ashford 2025.

## Information & Advice: Drop In Sessions

Every Monday  
Drop In Sessions are open from 10AM - 1PM



**Lyminge Library, 7-9 Station Rd,  
Lyminge, Folkestone CT18 8HS**

**Need support with benefits, available services or other issues affecting later life? Our Information & Advice Drop-In offers free, confidential guidance on a range of topics, including:**

- ✓ **Benefit checks to see what you may be entitled to**
- ✓ **Blue Badge applications**
- ✓ **Local community resources**
- ✓ **Health & wellbeing services**

**No appointment needed—just drop in and speak with our friendly team!**

Call **01303 269602** for more information



Registered charity number 1125274.  
Company number 6589817.  
© Age UK Hythe, Lyminge and Ashford 2025.



## AGE UK

## Are you concerned about your memory?

### Information and Advice

is available to those by telephone, centre-based visits and home visits. We have a team of expert Information and Advice Officers who can help to maximise income by completing benefit checks to ensure individuals are receiving all they are entitled to. Our team are there to support individuals complete forms, using the right terminology for a more positive outcome. This service is free and available by appointment or drop into one of our many Dementia Cafés.

### The Dementia Co-ordination Team

will work with and support those living with dementia, including family and carers. The Dementia Co-ordinators will be there to help from pre-diagnosis, to support people to get a diagnosis, to access support services and provide the guidance they need to live as independently as possible within their communities. Free and available by appointment.

### Dementia Cafés

offer a safe place to socialise, meet others, ask questions and learn more about dementia and local services, whilst enjoying a hot drink and a slice of cake. Free, groups held at various locations throughout the month.

### MCST (Maintenance cognitive stimulation therapy)

is a programme that meets weekly for 1 hour 30 minutes for people living with mild dementia. Group members take part in meaningful and stimulating activities, proven to help maintain memory and mental functioning. The group provide a fun, supportive environment where people can build new friendships.

### Dementia Drop-in Clinics

are available for you to connect with local agencies who support and offer advice for those living with dementia including the local Memory Service.

### Daybreak services

offer activity-based day care in a safe and secure environment for people living with moderate to late-stage dementia who need a little more support or have additional needs. As well as providing a meaningful day for participants, it can provide a day of respite for family or carers.

Services delivered at our bespoke hub at **Age UK Hythe, Stanford House, Stade Street, Hythe CT21 6BD.**

For more information or to speak to one of the team call:

**01303 269602, [dementialead@ageukhla.org.uk](mailto:dementialead@ageukhla.org.uk)**



Registered charity number 1125274. Company number 6589817. © Age UK Hythe, Lyminge and Ashford 2025.



**A nutritious and freshly prepared 2 course meal delivered directly to your door**

**Price £9.00**

**Delivered by one of our dedicated team members, hot and ready to eat. No reheating necessary. The driver will carry out a welfare check and dish up if required.**

### Areas covered

Hythe, Lyminge, Ashford, Folkestone, Dymchurch and surrounding areas.

**Available – 7 days per week**

(including bank holidays)  
Order up to 10.15am the day you want a delivery.



For more information, please contact the admin team 01303 269602  
[admin@ageukhla.org.uk](mailto:admin@ageukhla.org.uk)

Registered charity number 1125274.  
Company number 6589817. © Age UK Hythe and Lyminge 2025

# LYMINGE PARISH COUNCIL

## *For Lyminge, Etchinghill and Rhodes Minnis*

### Council news

Councillor contact details can be found on our website.

Change to office hours:

Please note that on the following dates our office hours will be cancelled due to venue closures.

Tuesday 19th August

Friday 22nd August

Thank you for your understanding.

### Meeting dates

The following meetings all take place at Lyminge Village Hall

Neighbourhood Plan - August 5th - 17:30

Finance & Administration - August 5th - 18:30

Community Engagement & Events - August 6th - 18:00

Full Council - August 12th - 19:00

Planning & Licencing - August 7th & 28th - 9:30 - Etchinghill Village Hall

Any additional meetings will be on our noticeboards/website.

### LPC Bake Off!



Congratulations to our wonderful Bake Off contestants and winners!

The standard was absolutely off the scale, so be proud of yourselves — each and every one of you brought your best, and it showed. The winner of each category is below:

Cupcakes: Gemma Aspinall

Tray bake: Carol Pullen

Brownies: Oceana Lucas

Victoria Sponge: Gemma Hardy

Special mention: Fran Fryer-Kelsey

Thank you to **The Coffee Cabin** for sponsoring our Bake Off by generously judging the competition and providing vouchers for the winners. Vouchers surely to be cashed in on their outstanding fried breakfasts!

[www.lymingeparishcouncil.org.uk](http://www.lymingeparishcouncil.org.uk)

07999 403948

[clerk@lymingeparishcouncil.org.uk](mailto:clerk@lymingeparishcouncil.org.uk)





## CONTACT INFORMATION

General - [clerk@lymingeparishcouncil.org.uk](mailto:clerk@lymingeparishcouncil.org.uk)

Handyman - [fred@lymingeparishcouncil.org.uk](mailto:fred@lymingeparishcouncil.org.uk)

Neighbourhood Plan -  
[neighbourhoodplan@lymingeparishcouncil.org.uk](mailto:neighbourhoodplan@lymingeparishcouncil.org.uk)

# PARISH ON PARADE!

## What a weekend!

Despite the rain's best efforts we had a fantastic weekend of food, drink, music and entertainment. Thank you to everyone who attended including stall holders, vendors, artists and parishioners.

We would like to offer a special thanks to the councillors who put so much time and effort in: Cllrs Fagg, Arnold, Wake-Smith, Harrison and Hall. We'd like to thank Cllrs McWhinnie and King for their help on the day but mostly we would like to thank our council officers who have put in endless hard work to ensure the event went on without a hitch (almost!). The parish is lucky to have such passionate, dedicated and skilled employees!



## Other events...

Events like these are not easy to plan and are even harder to pull off. We have the ambition to host even more events but need your help to do so! We need your ideas, your general guidance and your time!

If you've got some great ideas and want to get involved with event planning, whether you are 18 or 118, get in touch!

Just think, it's not long until Christmas.....

## THANK YOU TO OUR MAIN SPONSOR



Pentland  
Homes

[www.lymingeparishcouncil.org.uk](http://www.lymingeparishcouncil.org.uk)

[clerk@lymingeparishcouncil.org.uk](mailto:clerk@lymingeparishcouncil.org.uk)





## Thoughtful Food...

...is a group of local volunteers looking at our food, and how this impacts climate change. Our aims are to support people to produce more of their own food, and to shop locally, sourcing seasonal produce. We also run a community allotment in Lyminge and welcome new members.

**Contact:** [thoughtfulfoodgroup@gmail.com](mailto:thoughtfulfoodgroup@gmail.com) or on Facebook and Instagram [@thoughtfulfoodgroup](https://www.instagram.com/thoughtfulfoodgroup)

Next **Thoughtful Food** meeting, **MONDAY 25th August at Coach and Horses**

Following on from last month's article on the principles of permaculture, this month we are looking at waste.

This ties in closely with last month's article around creating self-sustaining systems (closed-loops) and is perhaps the very simplest of them all: Produce no waste.

### Principle: Produce No Waste

Thinking back to those closed-loop systems, any waste is just a potential resource that is being lost. With resources stretched, this is something we need to address. It's often easier not to think about where our waste goes - away somewhere, out of sight and out of mind. But we're often just shifting our problems and making them someone else's. If we can reframe our thinking, and make avoiding waste a priority, we can turn the tide.

#### In action

In practice, this means reducing the amount of unusable waste products at the production stage, and making use of other waste as a resource. For the former, a classic example is the food we buy, choosing the vegetables that are loose rather than in a plastic bag, and bringing our own reuseable bags to do our shopping. For the latter, taking a fresh look at waste products and looking for the value they hold, so we can channel them back into the system. Cardboard is a great example. It makes a brilliant weed suppressant and of course naturally breaks down with other organic matter to help form new soil, without the microplastics that weed membranes often contain.

This principle ties closely to last month's article around creating self-sustaining systems (closed-loops) and is perhaps the very simplest of them all: Produce no waste.

### In The Garden

How to harvest your veg at its best, avoiding waste. This maybe like 'teaching Granny to suck eggs' (hopefully you know the old saying!!) but harvesting your veg can actually be a tricky thing.

**Peas:** One day the pea pods are flat and then, low and behold, after just a few days, they are fat, dry and wrinkly! So.... getting the optimum moment is crucial for the best 'plant to table' taste.

**New Potatoes:** When the tops die down don't harvest them all at once - just root around in the soil - it will be dry after all so this is easy and harvest just the amount you need. Make sure you cover them all up again to prevent the light making them go green. I find a layer of straw works really well to



block light and conserve moisture.

**Beans:** All types of beans need to be harvested when young...don't wait until you feel big beans in all types - you can eat them raw as tiny beans in salads or lightly steam for a wonderful flavour. For a glut, open freeze them. (ie blanch and lay out on trays to freeze



then bag up once they are frozen).

**Lettuce and Leaves:** ie chard, spinach and celery. Pick outer leaves regularly - don't cut the tops until you have harvested most of the outer leaves. They will regrow once you cut.

**Courgettes:** cut with a sharp knife rather than snapping. They can break and then the remaining part rots.

**Sweetcorn:** Keep an eye on the 'tassles' and when they go brown gently pull back a small piece of the cob cover and put your nail into a kernal. If

the moisture flows clear they are ready. Don't wait too long with sweetcorn though as the kernels will go hard and will only be good for cows!! Cooking sweetcorn is easy. Put the whole cob with all its protective leaf cover into the microwave for 2 minutes and then 'voila', gorgeous succulent corn.

**Tomatoes:** Don't wait until they are squishy and coloured. The flavour improves if you leave them out of the fridge for a little while before eating them. Picking fresh for the table is best.

**Onions:** When you see the tops falling over, then leave for a week or so the lift and dry before plaiting into ropes.

**Peppers, Aubergines, Courgettes and Cucumbers:** Pick the fruits small - especially courgettes - otherwise you will have marrows. But a glut of courgettes/marrows goes well in a soup made with tomatoes and basil. If you pick regularly the plant doesn't get weakened but carries on producing fruit.

**And then what to do with them when you've picked them!**

### Ratatouille

A delicious mixed vegetable stew from Provence. It is usual to include onions, garlic, peppers, aubergines, courgettes and tomatoes and mixed herbs, but leave out or add what you like! There are also many ways to cook it. Once on a residency with no cooker and no saucepans I laid all the chopped vegetables onto two sheets of foil (double layer) wrapped it all up in more foil and placed it on some embers left over from the day's bonfire used to keep warm. You don't need any liquid as the vegetables will produce a wonderful juice of their own. I like to cook mine for at least two hours so all the flavours mingle.



**Very Best Wishes from Thoughtful Food**

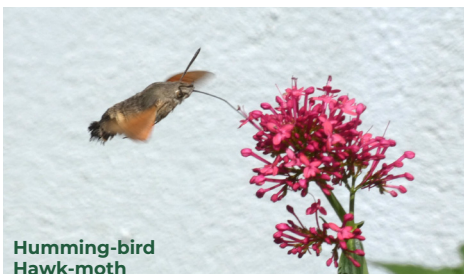


## Over 1000 Species in the Parish!

Did you know there are well over 1,000 different species that have been recorded in Lyminge Parish? These include lots of important pollinating insects, such as moths (over 500 species), butterflies (over 30 species), bees (85 species recorded), and hoverflies (68 species so far). You can explore all these species by clicking on the "summary of records" link on our interactive bioblitz page on iRecord: <https://irecord.org.uk/join/lyminge-parish-bioblitz>

Anyone can add wildlife records, using iRecord or alternatively iNaturalist. iNaturalist can be easier if you can take a photo and upload it for help with identification - the iNaturalist app itself will suggest the most likely species, then experts can agree or correct as appropriate. Once agreement is reached the record will come automatically to iRecord. Both apps are easy to find online.

One of the species being reported more and more often in the parish is the day-flying Humming-bird Hawk-Moth, which hovers like a tiny hummingbird to drink nectar from flowers such as lavender, buddleia and red valerian. They migrate to Britain from North Africa and Southern Europe in May and June. They are able to breed here during the summer months but traditionally have not been able to survive our winters. This is changing - with climate



Humming-bird Hawk-moth

change, the number of Humming-bird Hawk-moths arriving has increased and the moth is beginning to survive our warmer winters, at least in southern parts of Britain. They do this as adult moths and hibernating moths have been observed in unheated buildings, garages, porches etc. as well as in cracks in walls and holes in trees. One was photographed nectaring on primroses by Lyminge Village Hall on 2nd April this year, presumably having successfully overwintered in the village.

Harder to spot but worth looking out for in August is the Red Bartsia Bee, which collects pollen exclusively from Red Bartsia flowers - they are out and about now on the small patches of Red Bartsia on Court Lodge Green, - fast bees, a bit smaller than honey bees and once you get your eye in you should be able to spot a few. Let us know if you do see any in the Parish, either through iRecord or iNaturalist or by email to [tony.king@lymingeparishcouncil.org.uk](mailto:tony.king@lymingeparishcouncil.org.uk)

## Is Drought the New Norm?



Red Bartsia Bee

At the time of writing, four regions of England are officially in drought, with more areas expected to follow soon. Stats released by the Met Office revealed England recorded its warmest June since records began. While the UK overall experienced its second warmest June, narrowly behind 2023. The Environment Agency reported that it's the driest start to the year across England since 1976. Soil moisture deficits (SMD) continued to increase with soils considerably drier than would be expected across most of England. Following the driest spring in over 100 years and ongoing heatwaves, the UK is facing a long, hot summer with growing pressure on water supplies. In some areas, reservoir

levels are already well below average, and without significant rainfall, the Environment Agency warns that drought status could spread across most of the country by September.

The current drought is not a one-off - it reflects a broader trend driven by climate change, increased water demand and unsustainable usage habits. According to the Environment Agency, unless we act, we could face a daily shortfall of 6 billion litres of water by 2055 - five billion for public use, and one billion for sectors like energy and food production.

Extra information, tips on what we can do in our homes and gardens to save water, and a postcode tool to check the water status in the local area, all available from <https://waterwise.org.uk/protect-our-water-drought-and-hosepipe-bans-begin/>

**Some of their water-saving tips include:**

### ***In the garden:***

- Let your lawn go golden - lawns are resilient and bounce back after rain.
- Avoid using hoses or sprinklers - use a watering can if you need to water plants.
- Water at cooler times of day - early morning or evening to reduce evaporation.
- Use mulch - like compost or bark to help soil retain moisture.
- Install a water butt - collect rainwater now to use when it's dry.
- Check taps for leaks - a dripping tap can waste over 12,000 litres a year.

### ***In the home***

- Fit aerated shower heads - they reduce flow but maintain pressure.
- Shorten your shower - even one minute less saves around 12 litres.
- Only run dishwashers and washing machines when full.
- Check for a leaky loo - the biggest water waster in our homes!
- Use eco-modes to reduce water and energy use.

## Big Butterfly Count

There's still time to join in the Big Butterfly Count run by Butterfly Conservation - running until 10th August. See how butterflies in our parish are faring this year. For details on how to take part see <https://bigbutterflycount.butterfly-conservation.org/>



# Community Hall Details



**Large hall with stage, new kitchen and flexible hire**

Excellent parking facilities, disabled access, proximity to playgrounds and playing fields. Beautiful countryside location.

**Capacity:**

200 people dancing / audience seating, 100 with tables  
Small rooms available for up to 50 seated

Find out how we can help you with your next event:

**BOOK ONLINE:** [lymingevillagehall.org.uk](http://lymingevillagehall.org.uk)

**EMAIL:** [admin@lymingevillagehall.org.uk](mailto:admin@lymingevillagehall.org.uk)

**INFO:** 07547 545 601

Full pricing can be found on our website.

**Guideline prices:**

Main Hall hire: £88.40 (Fri / Sat evenings)

£47.60 (Sat / Sun morning or afternoon)

Find us on Facebook

Registered charity 28145

## ETCHINGHILL VILLAGE HALL HIRE FEES

The next time you are thinking of holding a function why not try Etchinghill Village Hall, which holds the highest Hallmark accreditation level (Hallmark 3), with its excellent facilities, including ample parking space.

The standard hire charge for the main hall and kitchen are:

ANY DAY OF THE WEEK ANY TIME £15 PER HOUR

No winter supplements. No extra charges.

Ideal for family parties and get togethers.

The use of a separate Committee Room is also available.

For all bookings or enquiries please contact:

**The Duty Manager on 07514 758936**

## Rhodes Minnis Village Hall

Charity No.800345

Rhodes Minnis Village Hall is located 2kms (1¼miles) from Lyminge and just off Longage Hill and Whitehorse Lane in Chapel Lane.

The hall is ideal for children's parties, band practice, quizzes, meetings, wedding receptions, fundraising events and much more. It has a fully equipped kitchen and baby changing facilities.

**Rates**

Mon to Fri £18 per session £48 all day

Sat & Sun £23 per session

£33 for evening session and £69 all day

**Sessions**

AM session 08.30 - 12.30

PM session 13.30 - 17.30

Evening session 18.00 - 23.45

Separate rates for Bank Holidays and New Year and special rates for regular users.

For all bookings and enquiries please contact:

**Mick & Dorothy Athow: 01303 862616**

e-mail: [booking-rmvh@outlook.com](mailto:booking-rmvh@outlook.com)

## VALLEY METHODIST CHURCH, LYMINGE AND TAYNE CENTRE HALL HIRE



Church Seating Max 150 £22 per hour

Clayson Hall (with Stage) Seating Max150 £16.50 per hour

Rigden Room Seating Max 35 £11 per hour

Wesley Room Seating Max 15 £11 per hour

All rooms have use of kitchen, toilets and disabled toilet. With the exception of Wesley room, all rooms are disabled-friendly and accessible.

Contact Tel: 07716521405 or [taynecentre@outlook.com](mailto:taynecentre@outlook.com)

## Lyminge Library Opening Times

Monday 10am - 2pm  
Tuesday 10am - 1pm, 2pm-5pm  
Wednesday 10am - 2pm  
Thursday 10am - 1pm, 2pm - 5pm  
Friday 10am - 2pm  
Saturday 9am - 1pm

Tel: 03000413131 [lymingelibrary@kent.gov.uk](mailto:lymingelibrary@kent.gov.uk)

**The Lyminge Newsletter**  
can be viewed online at  
[www.lyminge.org.uk/newsletter/](http://www.lyminge.org.uk/newsletter/)

## The Lyminge Association

*We're here to support and develop our community!!*

**Contacts:**

**Chair:** Peter Barnes 01303 863737 or  
07808775302 [pbarnes20@icloud.com](mailto:pbarnes20@icloud.com)

**Treasurer:** Janet Fry 01303 863177  
[janet@rhodesminnis.org.uk](mailto:janet@rhodesminnis.org.uk)

**Minutes Sec:** Heather Dunford

**Committee Members:**

Marian Chubb, Richard Chubb, Stephen Guyatt, Gillian Heywood, Robin Mackonochie,  
Derek Smith, Penny Stephens, Adrian Willcox (deputy chair), Bernie Wood, Martin Wood

**Newsletter:** As for Peter Barnes above.

**Please contact the Chair or Treasurer if you need any financial support for your charity.**

The Lyminge Newsletter August 2025

19

Editor: [pbarnes20@icloud.com](mailto:pbarnes20@icloud.com) Tel: 07808 775302





## Lyminge Baby & Toddler Group

We are excited to welcome you to our local parent, baby and toddler group.

Please come along, meet new mums and dads for a chat and a play.

It costs £3.50 with tea and coffee provided along with snacks for your child.

Tuesdays, term times only. 10am to 12noon at the Tayne Centre.

First session is free.

Follow us on Facebook and Instagram.

Contact Ellen at 07870405567.

# PRE-SCHOOL OPPORTUNITIES

Early Years Education & Day  
Care for Children Aged 2-5



## LYMINGE Pre-school

Every Day Adventures  
at our **OUTSTANDING** pre-school

**COUNTRYSIDE SETTING**  
**FANTASTIC FACILITIES & GARDENS**  
**QUALIFIED & LONGSTANDING TEAM**  
**WRAP AROUND CARE 8AM-5PM DAILY**  
**HOLIDAY CLUB OUTSIDE OF TERM TIME**  
**AFTER-SCHOOL CLUB**  
**PARENT PORTAL**



Rated **OUTSTANDING**  
by OFSTED 2022

We'd love to hear from you:

☎ 01303 863149

✉ [LYMINGEPRESCHOOL@GMAIL.COM](mailto:LYMINGEPRESCHOOL@GMAIL.COM)

## Etchinghill Baby & Toddler GROUP

10.15-11.30am every Wednesday  
at Etchinghill Village Hall  
£2.50 per child

Come along to Etchinghill's Parent and Toddler group welcoming all pre-school children. We have plenty of toys and snacks for the little ones, and there is always tea, coffee and cakes for the adults. For further information call Ruth on 07817777975, look at Parent and Child Etchinghill Facebook page or email us as [parentandchildetchinghill@gmail.com](mailto:parentandchildetchinghill@gmail.com).



## NURSERIES AND FOREST SCHOOL

*Bridging the indoor and outdoor learning  
environment for children in their early years*

Badgers Bridge has three sites, set in the idyllic countryside of Postling, Lympe and a Forest School in Lyminge. We are a small and friendly nursery, who blend the Montessori principles with the outdoor learning ethos.

### FIND US AT

- 📍 Postling Village Hall, The Street, Hythe CT21 4EU
- 📍 Lympe Village Hall, Aldington Road, Hythe CT21 4LE
- 📍 Outward Bound at Lympe
- 📍 Forest School in Lyminge

FROM 18 MONTHS TO  
5 YEARS

OPEN MONDAY TO FRIDAY  
8:30AM TO 3PM

GET IN TOUCH TO FIND OUT  
ABOUT AVAILABILITY AND  
MEET OUR LOVELY TEAMS

[badgersbridge@gmail.com](mailto:badgersbridge@gmail.com)

01303 862951





# Spring Rise Dog Food

Healthy and tasty meals for your furry friend!



AVAILABLE IN  
2KG, 6KG & 12KG

GRAIN FREE / SUPERFOOD 65 /  
SUPER PREMIUM / TRAINING TREATS

07582 407637

MAPLE COTTAGE, ETCHINGHILL, CT18 8BZ

FREE DELIVERY EVERY WEDNESDAY AND FRIDAY\*

\*within 15 miles of CT18 8BZ

We are Ashford based Chartered Surveyors  
With over 30 years' experience and in-depth  
knowledge of the local commercial property market.  
Redundant Agricultural Buildings always sought.

## Stafford Perkins

CHARTERED SURVEYORS

[www.staffordperkins.co.uk](http://www.staffordperkins.co.uk)

01233 613900



Your Local Commercial Property Experts

[richard@staffordperkins.co.uk](mailto:richard@staffordperkins.co.uk)



Hythe Aqua Swimming Club has vacancies for potential competitive swimmers Level 7 and above. Join a Club with a nationally accredited swim programme. Lessons/Coaching sessions are held on Tuesday & Thursday evenings at Hythe Pool.

We also welcome adult length swimmers to our Adult training on Tuesdays & Thursdays at 9.00pm

To book your place

Email: [hytheaqua@btinternet.com](mailto:hytheaqua@btinternet.com) or checkout our website:  
[www.hytheaqua.org.uk](http://www.hytheaqua.org.uk) or F/book



Carpentry, Joinery &  
Building Contractors

07828 751 063

[shaun@candjworksltd.com](mailto:shaun@candjworksltd.com)  
[www.candjworksltd.com](http://www.candjworksltd.com)

Find us on



Over 30 years of experience in the industry. Locally based.

Doors  
Bathrooms  
Bespoke joinery

Stairs  
Kitchens  
Living spaces

Roofing  
Extensions  
Loft conversions

Contact us now for a free quote: 07828751063. Visit our website [www.candjworksltd.com](http://www.candjworksltd.com)



## Bus times

To Folkestone town centre via Etchinghill & Cheriton High Street  
From Lyminge, The Sidings

**MONDAYS TO FRIDAYS except Bank Holidays**

There are route 17 buses at 0642, 0748, 0909 (0919 on schooldays), 0944, 1044, 1144, 1244, 1344, 1444, 1619, 1624 (schooldays only), 1704, 1804, and 1904.

**SATURDAYS**

There are route 17 buses at 0749, 0844, 0944, 1044, 1144, 1244, 1344, 1444, 1544, 1644, 1744, 1844, and 1929.

On Mondays to Saturdays there are also route 18 buses to Sandling Station & Hythe - for times see our website or call the number below

**SUNDAYS & BANK HOLIDAYS**

There are route 17 buses at 1032, 1302, 1532 and 1802.

To Canterbury city centre via Bham, Barham & Bridge  
From Lyminge, Wesley Terrace

**MONDAYS TO FRIDAYS except Bank Holidays**

There are route 17 buses at 0732, (0752 during school holidays), 0903, 1013, 1043, 1143, 1243, 1343, 1443, 1613, 1733, and 1858.

**SATURDAYS**

There are route 17 buses at 0742, 0842, 0943, 1043, 1143, 1243, 1343, 1443, 1543, 1643, 1743, and 1843.

On Mondays to Saturdays there are also route 18 buses to Canterbury via Stelling Minnis and Boastingham - for times see our website or call the number below.

**SUNDAYS & BANK HOLIDAYS**

There are route 17 buses at 0903, 1133, 1403, and 1633.

These bus times apply from 1 September 2024.



0345 241 8000 @StagecoachSE  
customerhelpSE@stagecoachbus.com  
stagecoachbus.com



South Kent SEN Tuition

1:1 and small group tuition in your home

Private tuition from highly experienced  
and skilled teacher

Supporting children whose parents may  
have decided that they should  
be educated other than at school  
Electively Home Educated or  
'Educated Otherwise than at School' (EOTAS)

Supporting children for whom school can be a  
stressful and anxiety producing place  
I offer a gentler more bespoke approach.

I also offer booster lessons in reading,  
phonics and maths

Contact me for a free 30 minute call  
or virtual meeting to discuss your needs and  
to see if I can help.

[www.southkentsentuition.co.uk](http://www.southkentsentuition.co.uk)  
[sarah@southkentsentuition.co.uk](mailto:sarah@southkentsentuition.co.uk)  
07751459085



**Laing  
Bennett**  
Independent estate & letting agents

**With our excellent local  
knowledge & experienced  
staff we will get you moving**

✓ **Free** professional photography, property  
floorplan, Rightmove premium listing &  
social media advertising

**01303 863393**

The Estate Office,  
8 Station Road,  
Lyminge,  
Kent CT18 8HP

Follow us on  
social media



[www.laingbennett.co.uk](http://www.laingbennett.co.uk)

**Anna Lindley**  
(RVN, Dip.A.Physio)



**Anna's Animal  
Physiotherapy**  
For dogs, cats & small pets



- Offering physiotherapy assessment and treatment of dogs, cats and small animals.
- Physiotherapy can help with osteoarthritis and the ageing pet, post operative orthopaedic surgery, neurological, spinal conditions, unexplained lameness and many more conditions.
- I use a combination of manual therapy, laser, ultrasound therapy, TENS, kinesiology tape and exercises to rehabilitate your pet depending on your their needs. I also address environmental and exercise factors that can help your pet with their condition.
- I am fully insured with over 16 years experience working with animals. I am a member of the International Association of Animal Therapists (IAAT).
- For more information please visit my website: [annasanimalphysio.co.uk](http://annasanimalphysio.co.uk) or feel free to contact me on 07944 606453 or [anna@annasanimalphysio.co.uk](mailto:anna@annasanimalphysio.co.uk)
- Why not follow me on social media:  
Instagram: [@annas\\_animal\\_physiotherapy](https://www.instagram.com/annas_animal_physiotherapy),  
Facebook: [@annasanimalphysiotherapy](https://www.facebook.com/annasanimalphysiotherapy)



FULLY INSURED

## Elham Dog Training Club

- Dog Training and Pet Care Services
- Talking Dogs Rally Training
- Kennel Club Good Citizen Dog All Levels Training
- Kennel Club Accredited Instructor and Kennel Club Good Citizens Scheme Assessors
- Puppy Training

Please call Lyn to book a space: 07866 234820 or email: [elhamdtc@gmail.com](mailto:elhamdtc@gmail.com) visit: [www.elhamdogtrainingclub.com](http://www.elhamdogtrainingclub.com) for more information



FULLY INSURED





Osteopaths, Adam and Katie, are here to help you minimise your pain, optimise your mobility, and enhance your health and wellbeing.



We believe that everyone deserves to live a life free from the limitations of pain, and we're here to support you on your journey to a healthier, more active lifestyle. Whether you are searching for help managing a chronic condition such as arthritis or circulatory problems, or you have a painful frozen shoulder, back pain, sciatica or recent injury.....we are here to support you.

*Book online via our website or call/email us for more information.*

**AK Healthcare, 4 Station Road, Lyminge, CT18 8HP**

**Tel: 07904311554**

**Email: [info@akhealthcare.org.uk](mailto:info@akhealthcare.org.uk)**

**Website: [www.akhealthcare.org.uk](http://www.akhealthcare.org.uk)**



**Social  
Enterprise  
Kent**

Supported by  
**COMMUNITY ENERGY  
PATHWAYS**

## ENERGY ADVICE VISITS



**We offer friendly, impartial energy advice**

**Book a FREE home visit with our DBS checked team, for tailored advice on:**

- 💡 **Money saving**
- 💡 **Energy efficiency**
- 💡 **Tariffs, bills and meters**
- 💡 **Fuel debt**
- 💡 **Grants**
- 💡 **Scam Awareness**
- 💡 **Accessing more support**

**Includes  
FREE energy  
saving goody  
bag!**

**To find out more or refer, contact:**

✉ **[digitalsupport@sekgroup.org.uk](mailto:digitalsupport@sekgroup.org.uk)**

☎ **01843 210005 / 01227 469970**



**ENVISAGE  
GROUNDCARE**

**Domestic & Commercial**

- **GRASS CUTTING**
- **HEDGE CUTTING**
- **CLEARANCE**
- **TREE WORK**
- **FENCING**

**Tel: 07724 447 368**

**Email:**

**[enquiries@envisagegroundcare.co.uk](mailto:enquiries@envisagegroundcare.co.uk)**

**[www.envisagegroundcare.co.uk](http://www.envisagegroundcare.co.uk)**

You may say I'm a dreamer, but I'm not the only one. I hope someday you'll join us. And the world will live as one.

**John Lennon**

**Sarah  
Holbrook**  
**PAINTER & DECORATOR**

**Elevate Your Space with 20  
Years of Expertise**

**Services Tailored to your Specification**

Internal & External Work

Paper Hanging

Domestic & Commercial Undertaken

Peace of Mind - Fully Insured

Competitive Rates - Top-notch service at affordable prices

Free Quotations: Get a clear understanding of costs with no-obligation quotes.

☎ 07891743740 ✉ [sholbrookdecorating@gmail.com](mailto:sholbrookdecorating@gmail.com)



**01303 847899**

*Live well, your way  
with care at home*

- ✓ Personal Care
- ✓ Companionship Care
- ✓ Home Help
- ✓ Dementia Care
- ✓ End of life Care
- ✓ Live in Care

CARE professional with client and Grandson

**Home Instead**

Folkestone, Hythe & Ashford

300 Cheriton Road

Folkestone, Kent, CT19 4DP

[accounts.folkestone@fha.homeinstead.co.uk](mailto:accounts.folkestone@fha.homeinstead.co.uk)

[www.homeinstead.co.uk/folkestone](http://www.homeinstead.co.uk/folkestone)

## GARAGE SALE - 14TH SEPTEMBER

**E.F.LETTINGS**  
Residential & Student



### YOUR LOCAL LETTING AGENT

At EFLettings we believe in a personalised service  
We are here for you every step of the way

[www.eflettings.co.uk](http://www.eflettings.co.uk)  
Tel: 01227 533550

*Daniel*  
**Kirby Roofing & Building**



Quality materials and reasonable rates  
Established 1996, based in Hawkinge, Near Folkestone,  
and covering Folkestone and Hythe areas  
Embracing all roofing work from small roof repairs to  
complete re-roofs.

What we do:

- Fibreglass Reinforced Plastic flat roofs
- Felt flat roofs
- New pitched tile and slate roofs and repairs
- Small and large jobs
- Fascias soffits and gutters
- Chimney repairs, rebuilds and removal
- Conservatory conversions
- Advice and free quotes

Visit full website below for more details

[www.roofers-folkestone.co.uk](http://www.roofers-folkestone.co.uk)

**01303 892705    07916273886**



# Kent's Leading Mobility Specialists

Over 200 new & used scooters available

**USED SCOOTERS FROM £395**

**BEDS FROM £1395**

**CHAIRS FROM £595**

Huge range of Shoes & slippers for problem feet

**HOME DEMONSTRATION LET US COME TO YOU**

**STAIRLIFTS**




**FOLKESTONE STORE**

**Tel: 01303 274574**

**[www.safehandsmobility.co.uk](http://www.safehandsmobility.co.uk)**

**[folkestone@shmobility.co.uk](mailto:folkestone@shmobility.co.uk)**

Compass House, 347-349  
Cheriton Road, CT19 4BP

**ALSO AT  
BIRCHINGTON**

## GARAGE SALE - 14TH SEPTEMBER



**HEAVER  
& LINCH**

Bespoke Handmade Kitchens & Furniture

Bespoke Handmade Cabinet Makers based in Lyminge, covering Kent and the South East.

Over 30 years experience in creating stunning solid wood kitchens and furniture.

Get in touch for any advice, recommendations and a free quote.

**Tel: 07832 360 603 or 07832 363 963**

**Email: [heaverlinch@outlook.com](mailto:heaverlinch@outlook.com)**

**Website: [www.heaverandlinch.co.uk](http://www.heaverandlinch.co.uk)**



**Colebrook Sturrock**

**Thinking of moving home?**

**SELL OR RENT your home this Summer! Contact your local, experienced village agent for a FREE Valuation!**

**01303 892000**

Elham 01303 840422	Hawkinge 01303 892000	Saltwood 01303 260666	Sandwich 01304 612197	Walmer 01304 381155
-----------------------	--------------------------	--------------------------	--------------------------	------------------------

**Browns** [colebrooksturrock.com](http://colebrooksturrock.com)

Looking to Move?

Looking for an Agent that gives Straight Forward Honest Advice?

Look no Further, Choose Colebrook Sturrock Sales & Lettings.

Call us Now for Your Free Market Appraisal

Covering Hawkinge & Elham plus all surrounding villages 01303 892000

Tel: 01303 892000/01303 840422  
[www.colebrooksturrock.com](http://www.colebrooksturrock.com)

Email: [hawkinge@colebrooksturrock.com](mailto:hawkinge@colebrooksturrock.com)  
Email: [Elham@colebrooksturrock.com](mailto:Elham@colebrooksturrock.com)



**APX PROJECT  
MANAGEMENT**

From design to build, we use trusted quality trade professionals along with reliable suppliers to ensure budgets are met, with high standards maintained. If you're looking to –

- Extend your property
- Carry out an external or internal refurbishment
- Convert an existing building into a new dwelling

Please contact: paul@apxprojectmanagement.co.uk 07487 364155

## Auto Economy Centre

**Fully equipped Mechanical Repair & Service Centre**

**With the latest diagnostic equipment**

**Half price MOTs when booked with any service**

**01303 863656**

**Orchard Garage, Canterbury Rd, Etchinghill**

**www.autoeconomycentre.com**

**Gosbee  
LANDSCAPES**

FENCING | GATES | PAVING | RESIN BONDING

- Over 35 years experience • Jacksons Approved Installer
- Marshalls approved • Check-a-trade registered

Call Martin Gosbee: 07974 835 511 | 01303 863 337

GOSBEECONSTRUCTION@GMAIL.COM  
GOSBEE.CO.UK



## LYMINGE FOOD & WINE

**01303 862225**



Our new opening times are:

Mon – Sat **7:00-20:00**

Sunday & Bank Holidays

**8:00 - 19:00**

PayPoint

**POST  
OFFICE**



We offer National Lottery, ATM terminal,  
Post Office & PayPoint services.

## Park House Sanctuary Boarding Kennels & Cattery

**Park House, Stelling Minnis CT4 6AN**

Brick-Built Heated Kennels. Daily Walks ~ Reasonable Rates

Dogs must be fully inoculated. Heated Cat Chalets

Quiet Area Inspection Invited.

To book or for further information, call 01303 862622

or email lord.whisky@btinternet.com

www.lordwhisky.co.uk



**Dennis Huntley  
Chimney Sweep**



Wood burners and multifuel stoves installed

Hearths and fireplaces built & installed

Over 40 years' experience

**01303 862 343 • 07850 784 365**

dennis.huntley@talktalk.net • www.dennishuntley.co.uk



## AIR LINK CARS

(You pack up, we pick up)

Airport, Seaport & Long Distance Travel Specialists.

The Family Run Business where service really counts

Estate cars and People Carriers



Fixed price 24hrs a day. No extras.

Written Confirmation of booking.

For the Easy Airport Link, Think AIR LINK!

**01303 670370 - 07766 824 474**

airlinkcars@yahoo.com

## D.W. Garden and Mini Digger Services

**Mowing, Fencing, Hedge Cutting,**



**Chainsaw Work, Turfing**

**Free Quotes**

**Contact David 07765789721**

**HANDYMAN  
SERVICES  
SJW**

www.Facebook.com/sjwoodhandyman  
www.Instagram.com/sjw.handymanservices  
**07796 384857**

## Trevor Law

**Electrical Installations**



Serving Elham Valley for 30 years

Part P Registered

**07850 970087**

## South East Aerial & Satellite Solutions

**Digital – Freeview – Satellite – Aerials**

Supply and fit of quality digital installations, FREEVIEW, SKY, aerials, poor reception and problem solving, upgrades and repairs by fully accredited engineers

Free quotations and advice, fixed prices, fully insured

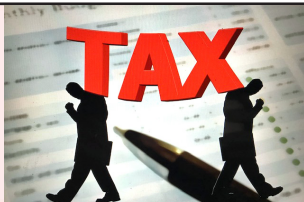
**Freeview**

**NO CALL-OUT CHARGE**

**07825 168010 - 01303 862361**

**freesat**

**TAX**



Based in Etchinghill, I provide a personalised service with a one-off, flat fee of £180 to prepare & submit your Tax Return. No hidden costs.

FMAAT Licensed Accountant, fully insured and HMRC-authorized.

**Contact Anita:**

**07361 238744 or aabookkeepingsservicesaadamsgmail.com**



## Richard's Barbershop

4 Station Road, Lyminge CT18 8HP

Open: Tuesday 8am - 1pm

Wednesday Appointment Only

Thursday 8am - 1pm

Friday 1pm - 6pm

Saturday 8am - 1pm

*Summer  
Holiday  
Timings*

Walk in or call Richard for appointment on 07522 494969



## DILTON MINI SKIP HIRE

Ballast, Hardcore, Sand  
and Topsoil Supplied

REGISTERED WASTE CARRIER

01303 812448 or 07799 433754

## Red Dragon I.T. Ltd.



- Windows, Mac & Linux Systems
- PC Health Checks
- Wired & Wireless Networks
- Website Design
- Graphic Design

T: 01303 723456 | E: info@rdit.co.uk | www.rdit.co.uk

The Old Granary, Hanover Mill, Church Rd, Merham, TN25 6NU



Hawkinge

## Veterinary Surgery

Independently owned veterinary surgery for all types of small animals.

Opening hours: Monday to Friday 08:00-19:00 Saturday 08:30-13:00

24hour emergency service

TEL: 01303 764190

Hawkinge Veterinary Surgery, 9b Defiant Close, Hawkinge CT18 7SU

www.hawkingevetsurgery.co.uk



**ROBERT KENT** Cert. fp  
FUNERAL DIRECTOR

**Direct  
Cremation**

**£999**

**Fair Priced  
Cremation**

**£1950**

**ONE FIXED PRICE INCLUDING  
ALL CREMATION FEES**

**01303 684062**

**RKFUNERALS.COM**

## Computer support & repairs by local people

*Customer service is our priority*

- \*Remote IT support for business or home
- \*New & refurbished sales
- \*Call-outs for business or domestic users
- \*Preventative maintenance & upgrades
- \*Repairs to most phones, tablets & devices

enquiries@thecomputerpeopleltd.co.uk



Church Approach,  
New Romney,  
TN28 8AS  
01797 363385

## Andy Mannering Flooring

SPECIALISING IN AMTICO AND KARNDIAN LUXURY VINYL TILES

- Also safety flooring, rubber flooring, etc.
- Commercial and domestic work undertaken
- No job too small. Free estimates & advice given
- Over 35 years experience & fully insured

T: 0797 434 7248 or 01303 863095

E: info@andymanneringflooring.com

Please visit my website for further information and feedback

**www.andymanneringflooring.com**



## Elham Valley Electrics Ltd.

Local, Low cost, Low carbon

### Domestic Electrician

All electrical needs & EV chargers. Free estimates.

Insured and certified by NAPIT

Call James: 07563 008202

contact@elhamvalleyelectrics.co.uk

or [www.elhamvalleyelectrics.co.uk](http://www.elhamvalleyelectrics.co.uk)

## Rhodes Minnis Cat Sanctuary

REHOMING & BOARDING CATTERY

- Our Sanctuary takes in and rehomes 250 unwanted cats and kittens each year. A variety of cats are always available to suitable homes.
- 5\* Boarding Cattery under 2018 regulations
- We are open to visitors every day from 10am-1pm & 2-4pm. No appointment needed.

T: 01303 862 243 E: [rminniscats@gmail.com](mailto:rminniscats@gmail.com)

@rhodesminniscats [www.rhodesminniscatsanctuary.com](http://www.rhodesminniscatsanctuary.com)

Seathwaite, Green Lane, Rhodes Minnis, Kent. CT4 6XU

Reg. Charity No. 262245



Tree Work - Hedge Cutting

Lawn Mowing - Pruning

Garden Maintenance

Garden Waste Clearance...

... and so much more!

Thoughtful garden care,  
local to you.

hello@foxandoak.co.uk

www.foxandoak.co.uk

(07793) 061380



**Fox & Oak**

— TREE & GARDEN SERVICES —

**HURST  
INTERIORS**

## Bespoke Joinery

Doors - Windows - Built-in Furniture

Sliding Sash and Casement Windows

Bespoke Front Door made to match original

Made to Measure Wardrobes and Understairs Storage

All work is completely bespoke

Please get in touch for free advice and quotation

Workshop based in Merham and covers the Kent area

07732 603 415

max@hurstinteriors.com

hurstinteriors

## Tressenden Designs

A seamstress and costume maker with 8 years of experience.

- ♦ Clothing alterations ♦ Repair work undertaken ♦ Made-to-measure; create a bespoke piece for those special occasions
- ♦ Modern and vintage designs ♦ Costumes, ball gowns and wedding dresses

For more information or a quote please contact Amy on: Mobile: 07853 202304 Email: amy.louise.ford@hotmail.co.uk





**T.M. GRIGGS**

01303 489795 07854 098395  
tobystreesurgery@gmail.com

**Garden Clearance - Turfing - Hedge Cutting  
Tree Work - Stump Grinding - Fence Repair**

**DYNO-ROD**



We've been  
unblocking  
sinks, drains  
& toilets  
in Kent  
since 1965

For a FREE no obligation quote  
contact Mark or Peter on:

**01233 621108  
07557 616630**

## FRESHLOOK GARDENS

Regular lawn mowing service. Garden design. Hard and soft landscaping. General garden work, fencing and decking. Turfing hedge cutting, small and medium tree work. Water features, ponds and patios.

For free quotation ring **Danny Scott**  
**01303 242140** or **07795510093**  
mrdanscott89@gmail.com

Established since 1990. Fully insured.

## THE HANDY FELLOW



**A TRUSTED LOCAL SERVICE  
CALL 07534485049**

**ONE.HANDY.FELLOW@GMAIL.COM**

## Computer Repairs

01303 241325  
07968 129902

PCs, MACs, Laptops, Tablets & printers,  
Upgrades & Repairs, Internet & Email, virus removal,  
Office Setup, Backup & Recovery & much more ...  
Tuition available by a qualified tutor.

Usual Fee **£55**

Web sites built & hosted from £10 per month

See [www.computers-in-lyminge.co.uk](http://www.computers-in-lyminge.co.uk) for details



General Landscaping Including  
Fencing • Turfing • Paving

**Gavin Allfree**

T 07495 299711 E [gavinallfree@gmail.com](mailto:gavinallfree@gmail.com)



All Aspects of Tree  
Work Undertaken  
NPTC Qualified.  
Fully Insured.  
Please call **Sam**  
for a free quote:  
**07963 203564**

Local Tradesman

## J Tappenden

Established over 40 years ago

Painter/Decorator

**01303 862467  
077755 78008**



The Newsletter can be viewed  
online at  
[www.lyminge.org.uk/newsletter/](http://www.lyminge.org.uk/newsletter/)



**DAVID HAIME**  
ARCHITECTURAL TECHNOLOGIST  
BUILDING TECHNICAL DESIGN  
AND CONSTRUCTION DRAWING  
SERVICES.  
PROJECT MANAGEMENT

BUILDING PLANS FROM PORCH TO NEW BUILD.  
PLANNING/BUILDING CONTROL/STRUCTURAL CALCS.  
COVERING KENT/SUSSEX/SURREY.

LYMINGE, KENT CT18 8HA  
TEL: +44 7974 156510  
EMAIL: [D.HAIME@BTINTERNET.COM](mailto:D.HAIME@BTINTERNET.COM)

## Jackson Plumbing Property Maintenance

Complete bathrooms and tiling  
No job too small. Special rates for OAP's.

Telephone: home/evening **01303 270691**  
or daytime **07773 089398** or **07864 929826**

## Hamilton Windows & Doors

*New joinery, restoration, double glazing of old and  
existing timber windows*

Bring your windows and doors back to life and get rid of cold  
draughts, or replace them with beautiful new ones.  
Joiner/carpenter with many years of experience.

Based in Lyminge, please feel free to call for more information.

**07792901266** [Alex\\_b\\_hamilton@live.co.uk](mailto:Alex_b_hamilton@live.co.uk)



**JBS  
BUILDERS**

Specialising in Brickwork, Fencing, Landscape Gardening. Tree work undertaken (lopping,  
felling and clearing).

General household repairs, painting, plastering, power jetting & cleaning.

No job too small!!! All work guaranteed and insured.

**For free advice and quotations please call: 07825 168010/ 01303862361** (anytime)





## Financial Planning

**David Gridley - Chartered Financial Planner**

Range of quality advice from a fully qualified adviser:

- Pre- and Post-Retirement Planning
- Investment Planning
- Inheritance Tax Planning

For further information, please contact our Lyminge office

David Gridley FPFS

Tel: 01303 863959 Email: davidgridley@sjpp.co.uk

**Ashman  
Consulting Ltd**



**Straightforward I.T.**

**Advice Training Solutions Support**

**Steve Ashman**

**(07702) 641981**

[info@ashman-consulting.co.uk](mailto:info@ashman-consulting.co.uk)

**MWH**

*window and gutter cleaning service*

**Mark Haley**



Lyminge and surrounding areas

For a free no obligation quote, please contact me

**Mobile: 07738 479202**

**Home: 01303 863 702 Email: haleymark161@gmail.com**

Find us also on Facebook

## T. Metcalfe Fencing Contractors

Approved Expert Installer for Jacksons Fencing

Established over 30 years

Fully insured - Highly experienced teams



Panel fencing, gates, decking, pergolas, post & rail,  
stock fencing, security, landscaping & tree surgery.

**01303 840201**

[metcalfefencing@btinternet.com](mailto:metcalfefencing@btinternet.com)

Proprietor - Derek Burr,  
Ash Ridge House, Elham



## Sunhouse Electrical

Your local reliable Electrician

Part P Registered & Elecsa Approved

On Electrical Safety Register & Fully Insured

For a free quotation call James on

**01303 766333**

[www.sunhouse-electrical.com](http://www.sunhouse-electrical.com)



**Lou Lloyd  
CARPENTER**

**Lou Lloyd  
CARPENTER**

[loulloyd@rocketmail.com](mailto:loulloyd@rocketmail.com)

**07984 426214**

Kitchens, Flooring, Wardrobes,  
Doors, Decking and more!

## Fincham Plumbing & Heating

We specialise in bathroom remodelling, including all tiling & pipework

Natural gas boiler servicing, Installation, Maintenance, Repairs, Replacement

All your plumbing requirements

Martin is a Qualified Plumber & Gas Engineer with over 30 years experience

Gas Safe, CIPHE, WIAPS registered

**Rosemary & Martin Fincham**

**07835 851 706 [martinfincham@sky.com](mailto:martinfincham@sky.com)**

## HAND MADE CURTAINS, ROMAN BLINDS & SOFT FURNISHING, CURTAIN ALTERATIONS

**TEL: VALERY WREN**

**01303 237755**



**D & S DOUBLE GLAZING SERVICES**

01303 863689 - 07912317915

We are a local company that specialise in double glazing repairs offering a wide range of service's that include: Replacement double glazed units - Locks - Hinges - Handles - Rubber Seals - Gaskets.

For a free estimate please call: 07912317915 or 01303 863689

or email: [dsdoublinglazingservices@gmail.com](mailto:dsdoublinglazingservices@gmail.com)



**CEDAR TREE CARE** City & Guilds NPTC

All types of tree work undertaken

Crown lifting, crown reductions,

dismantling and removals, hedge maintenance,

pollarding, stump grinding and removal, mobile saw milling,

wood land maintenance, all year round seasoned logs available

Fully insured and NPTC qualified with over 15 years experience

**Call Tom: 07769 908027 email: [linchlogs@gmail.com](mailto:linchlogs@gmail.com)**

## SCRUBBERS - Est. 1988

THE HOME AND COMMERCIAL CLEANERS

One off, regular or moving day 'Blitz'

Oven cleaning - Ironing

Carpet cleaning and more...

For a friendly and reliable service

Free Estimates

**Tel: 01303 249288 or 07834 128671**

## B.M. Plumbing & Maintenance Services

Local Lyminge Tradesman

Plumbing and heating works. Complete bathroom install including tiling. General building maintenance undertaken. No job too big. No job too small.

Cheaper rates for senior citizens

**07890854128 [Benmillsplumbing@hotmail.co.uk](mailto:Benmillsplumbing@hotmail.co.uk)**



**Acrise Electrical Services Limited**

**Design - Install - Maintain**

Tel: 01303 656007 Mob: 07803 421240 Email: [info@acrise-electrical.co.uk](mailto:info@acrise-electrical.co.uk)

Website: [acrise-electrical.co.uk](http://acrise-electrical.co.uk)

Domestic, commercial, industrial & agricultural electricians serving the Elham Valley and surroundings.

## D.M.B. Plastering

All aspects undertaken  
Interior. Exterior. Plastering. Rendering.  
Coving. Ceilings. Wall. Floors  
Finest quality assured. CSCS Certified.  
30 years experience.

Free estimates. Reliable service. Fully insured.

Call **David** on **07818 607209**

## C. Brewer

Painting and Decorating

Interior and Exterior Painting

15 years of experience ~ a keen eye for detail

Clean and tidy worker

Good rates and senior citizens discount of 10% off labour

**07510 631497**

## KJB GARDEN SERVICES

Weeding, Pruning, Mowing, Hedge  
Cutting & General Maintenance

**01303 862181 or 07704 989 402**

**Over 35 years experience**

## Ewin Electrical

Contact Simon for any electrical maintenance, refurbishments or upgrades with a friendly, clean and professional approach to work  
**07891103065**

info@ewinselectrical.co.uk www.ewinselectrical.co.uk



**SNIPPERS & CLIPPERS**



**UNISEX HAIR SALON**



**APPOINTMENT NOT ALWAYS NEEDED**



**WEDDINGS & SPECIAL OCCASIONS**



**SHELLAC NAILS**



**FREE WIFI**



**GENTS WELCOME**



**4 Station Road, Lyminge**

**Folkestone**

**Kent, CT18 8HP**



**01303 647 222**



info@snippersandclippers.co.uk

Find us on  
**Google+**



Find us on:  
**facebook**

House Clearance covering South East Kent.....and beyond!

## CAROL CREES CLEARANCES



- Est. over 30 years  
Full/part house clearance  
Fair prices paid  
Antique/Vintage/Retro/Modern  
Registered rubbish carrier

Contact **Simon Cullen** on **07745 421680** or **sijnzo@aol.com**



**East Kent  
Foot Care**

www.eastkentfootcare.co.uk



**07745 532075**

**Podiatry, Chiropody,  
Foot Health**

Treating and managing foot  
and nail conditions, corns,  
callus, insoles, ingrown nails,  
diabetic foot care

Total garden care for all your needs

## TIM MILLETT

Grass Maintenance, General Gardening, Small & Medium  
Size Tree Work, Stump Grinding and Wood chipping  
Fencing Repairs & New Installations  
Turfing, Hard & Soft Landscaping

Free Estimates - Fully Insured

**07752 880583**

Email: **info@tmhorticulture.co.uk**

## N.P.C.

**Domestic Appliance Services**

Service and repair of washing machines, tumble driers,  
dishwashers, cleaners and small electrical work.

For a prompt and friendly service

Call Neil Collard 01303 892234 or 07798716044  
or Google me on Yell.com



**hughes  
electrical**

**Your Local Electrician**

**For all your electrical needs**

- 18th Edition/Part P Registered
  - Insured & all work guaranteed
  - All electrical work carried out including EV charging points
  - Covering Lyminge, Etchinghill & surrounding villages
- Call for a free, no obligation quote and to discuss your electrical requirements.

Proud members of  
**Checkatrade.com**  
Where reputation matters



**07878 457018**

**01303 814372**

info@hughes-electrical.co.uk www.hughes-electrical.co.uk

## JON DAUGHTERS - Local Builder

All aspects of general building works undertaken including: roofing, kitchens, bathrooms and small extensions

**Trading for over 30 years Free quotes, no obligations, fully insured**

**Telephone: 01303 863371 Email: daughters777@hotmail.co.uk**



# Lyminge Midsummer Festival

The Flower Festival  
- Lyminge Parish Church







## LYMINGE THEN AND NOW

Our monthly look at how Lyminge has changed over the years, with thanks to Lyminge Historical Society.



This view looking north east along Brady Road towards what is now the entrance to Barton Field has changed remarkably little in almost a hundred years. The houses closest to the camera are easily recognisable as Holmleigh and Claygate, with Hill View, Moorlands, Timaru and Little Garth beyond. The Register of the population taken just before the outbreak of war in 1939 shows that all these houses were known by the same name they have today, with the exception of Hill View. But as this is also called Moorlands in the Register like its neighbour, this may be a mistake. The Ordnance Survey

map of 1939 shows there was a vacant building plot between Claygate and Hill View, but this has since been shared between the two properties and no further house has been built.

In 1939, Holmleigh was occupied by William Andrew, a retired schoolmaster and his wife Ada. Next door in Claygate at this time, Francis and Frances Tothill were planning to do their bit for the war effort. Later in the war, and both in their sixties, they were deployed to Cairo, where Francis lectured at a training college and Frances was a hospital sister with the Red Cross. The main change



in the view we can see in these pictures is the loss of front gardens to provide parking, and also if you look carefully, the replacement of diamond-paned windows with double-glazing. But the view from these houses would have been very different in 1939. None of the houses that now line the other side of Brady Road was built until the 1950s, so those in the picture looked out onto fields. At that time, those fields stretched to the back gardens of the houses on Church Road. There were no Silverlands or Mount Pleasant estates as there are now.



## Lyminge Gardeners' Society Summer Show 2025



The show was well supported with a wide range of flowers and vegetables despite the inclement weather.