

# THE LYMINGE NEWSLETTER

For the communities of LYMINGE, ETCHINGHILL, RHODES MINNIS and POSTLING

July 2025

Produced by  
THE LYMINGE ASSOCIATION  
[www.lyminge.org.uk](http://www.lyminge.org.uk)

From The Lyminge Association

**THE RUDE MECHANICAL  
THEATRE CO.**

**PRESENT**

A BRAND NEW PRODUCTION OF  
THE RUDES' SMASH HIT MUSICAL COMEDY

**GENTLE HARRY'S  
FARM**

**OUTDOOR THEATRE**

Tayne Field, Church Road, Lyminge,  
Kent, CT18 8JA  
Saturday 19th July – 7.30pm

'SUPERBLY DONE' – THE STAGE  
'A DELIGHT' – INDEPENDENT ON SUNDAY  
'SUCH A GOOD NIGHT!' – THE TIMES  
National Press On The Rudes  
[www.therudes.co.uk](http://www.therudes.co.uk)



The Rude Mechanical Theatre Company Present  
Gentle Harry's Farm

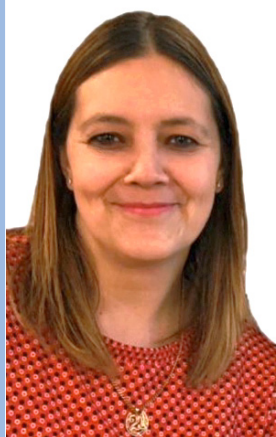
It's a breathless July in 1957. Agnes and Minnie just loved their boarding school, The Gables School for Jolly Nice Girls! But first, before domestic science college - and husbands after that, they would have such a twiffic summer under the blissful blue of Gentle Harry's Farm! Then of all things they find some bounders have burst into the bank in Eastbury and nicked the cash! And the place is swarming with coppers! Bliss! Bliss in abundance! Meanwhile the brown eyed cows chew - and the magpies chatter. It will buzz with hilarity, sigh with tenderness and chirrup with gentle satire.

'Such A Good Night' - The Times - 'Superbly Done' - The Stage  
'Highly Entertaining' - Time Out

National press on The Rude Mechanical Theatre Company.

Tickets, tour schedule and information are all available now from  
[www.therudes.co.uk](http://www.therudes.co.uk)

## AK Healthcare



Adam and Katie, the osteopaths from *AK Healthcare* in Lyminge, are thrilled to welcome Foot Health Practitioner **Jayne Garvey** to the clinic.

Jayne qualified as a foot health practitioner from the SMAE Institute. She is dedicated to providing personalised care for a range of foot problems, ensuring your feet are healthy, comfortable, and well-supported through every step of life.

On Tuesday mornings Jayne will be offering nail cutting, management of cracked heels, fungal nails & infections, painful nails, and concerns related to diabetic foot health, verruca, corns and medical pedicures.

To ask Jayne how she can help you and to make a booking with her, please contact her directly on 07832 797341 or email: [jayne@solelyfootcare.co.uk](mailto:jayne@solelyfootcare.co.uk)

To contact osteopaths Adam and Katie, call 07904 311 554 or email: [info@akhealthcare.org.uk](mailto:info@akhealthcare.org.uk)

# Margaret Saunders' Meanderings

My meanderings take me to Italy this month. The early morning flight flew us above Deal with the just-risen sun highlighting the White Cliffs – Dover Castle and harbour, Folkestone harbour and the bay ending with Dungeness all visible in the soft light. By the time we reached the Alps, over an hour later, the sun had strengthened and for miles all I could see were snow covered mountains like iced peaks on a cake, bright white facing east and deep blue shadows on the slopes facing west, with plateaux of pristine snow in between. Lakes of cloud lay in some areas with crests rising like icebergs. Based in the World Heritage City of Assisi I rise early the following morning as we are travelling south by coach to Greccio and Poggio Bostone for the day. It is the time between night and dawn, with birds beginning their morning song and bells from the many churches chiming across the city. Breathing in the cold air, I take a few moments to absorb the special nature of this place – designated 'City of Peace' for many reasons.

We leave Assisi behind us and travel along the Spoleto Valley, passing villages with houses built in the warm local stone with wrought iron balconies, behind which some shutters remain closed, whilst others already have their bedding hanging out of the window to air. Orchards of olive trees create soft grey-green seas which punctuate the landscape amongst fields yet to be sown, whilst others are already showing green growth. Dark rich alluvial soil provides fertile land for farming. Narrow dykes traverse the valley floor continuing to drain the once swampy land. Fortified medieval hill-top towns are packed with honey-coloured buildings, their square bell-towered churches rising above the surrounding houses. As the sun gains height, and the long fingers of its rays reach forward

towards the day, the valley comes to life, its colours strengthening and brightening – one side in sunlight, the other in shadow. We pass a wooden-shuttered stone house surrounded by a modest vineyard, olive grove and vegetable patch, providing most of the essentials. Small shrines appear regularly along the route, usually at crossroads, housing a painting or crucifix on the back wall and pots of plants or flowers on their tiled floors. High up, a small fish-shaped cloud floats across an almost perfect blue sky.

Leaving the wide valley we begin to climb, with steep tree-clad hillsides on either side where smaller zig-zag valleys interlock like fingers on a clasped hand. Trees grow at a forty-five degree angle from the slope. Deep clefts have been carved in earlier times by fast moving water which fed the river which made the wide flat valley we have left behind. A long tunnel takes us through a mountain and then we are out into verdant scenery, following a contour a few feet above the river where flat green swards open up beside the banks. Mauve-blossomed Judas trees stand out against the greenery, sometimes singly and other times in clusters. As the vista opens up, jagged snow topped mountains are a reminder that it remains cold at higher levels, despite the sunshine. After a steep climb along roads with sharp hairpin bends, we reach our destination. Signs along this last part of the route include warnings of snow, heavy rain, deer, risk of skidding, falling rocks and unstable edges to the road!

Built on a steep slope, the sanctuary itself is of local stone, its sheer sides almost forming part of the mountainside. A long flight of wide steps leads up to the buildings which at the top, open out into a small courtyard surrounded by a low wall, over which one can look down onto the tops of tall trees and in the further distance is the village of Greccio, its stone buildings bunched together amidst the green of the surrounding forested hills. It was here, in the thirteenth century, that St Francis of Assisi created the first 'nativity scene', using animals and people to depict the birth of Christ, so as to bring the event to life for the villagers. All around the courtyard are tubs and



troughs of brightly coloured pansies, each variety showing a different 'face' in a different colour combination. At the back of the buildings, a winding path leads through trees and wild flowers offering a sanctuary to the modern visitor, with benches and quiet spaces set aside for moments of contemplation. Silence is requested, so the only sound is from birdsong, which can be heard from amongst the thousands of trees that populate this region.

Travelling through and past villages on the return journey, the names read like an Italian restaurant menu: Tostoni; Pipino; Valleceppi; Cannarafusile; Marzabotta; Rivotorto. The march of urbanisation has left houses and farmsteads empty, with roofs caving in and nature reclaiming what was once hers. A couple of dozen white egrets feed in a riverside field far from habitation and further along the route, a field of equally pure white cattle graze in the mellow evening light. Tired but relaxed, we return for our evening meal where we will exchange views and thoughts about the day.





# Diary of Forthcoming Events

This page is printed to give readers and organisers the opportunity of planning events without clashing with existing ones, which are already in the 'diary'. It is not intended as a means of advertising and we take no responsibility for errors or omissions. Acceptance is at the discretion of the editor. Please send your updates by email to [pbarnes20@icloud.com](mailto:pbarnes20@icloud.com) or via methods outlined on Page 3.

## ONE-OFF EVENTS

Date	Time	Event	Where	Tel. No.
2 July	11.30am	Singing For All	TC	
9 July	11.30am	Singing For All	LMC	
11-July	7.30pm	The Undecided	C&H	
12-July	8am	Lord Whisky Boot and Summer Fayre	LW	
12 July	4pm	Cantores Summer Prom	LVH	
18-20 July		Summer Parish on Parade	JF/TF	
19 July	11.30am	Singing For All	LMC	
19 July	7.30pm	The Rude Mechanical Theatre	TF	
20 July	7.30pm	G&T	C&H	
26 July	7pm	Men Just Singing	LPC	07842840089
27 July	9.30am	Farmers Market	LVH	
27 July	10am	Family Praise Service	LMC	
02 August	2.30pm	Rhodes Minnis Summer Show	RMVH	
24 August	9.30am	Farmers Market	LVH	
<b>14 Sept</b>	<b>9am</b>	<b>Garage Sale</b>		<b>863600</b>
25 Oct	7pm	Autumn Quiz	EVH	07544 670363
30 Nov	4.45pm	Christmas Lighting Event	Meridian Park	07544 670363
07 Dec	7pm	ERA AGM	EVH	07544 670363

## MONTHLY EVENTS

Date	Time	Event	Where	Tel. no
1st Mon	10am	Stroke Support Group	C&H	07903 150099
2nd Mon	7pm	Parish Council Meeting	LVH	07999 403948
3rd Mon	10am	Stroke Support Group	C&H	07715 221705
3rd Mon	7pm	Etchinghill Cinema Club	EVH	07544 670363
1st Tues	2pm	RBL, Elham Valley Branch	SMCHE	07734 383691
1st Tues	2pm	Library Reading Group	LL	0300 0413 131
1st Tues <sup>3</sup>	7.30pm	LHS Talk/Event	TC	863879
2nd Tues	2.30pm	Library Reading Group	LL	0300 0413 131
3rd Tues <sup>2</sup>	7.30pm	Gardeners' Society	TC	07703 149008
Last Tues	10.30pm	Lyminge Poetry Group	LL	0300 0413 131
1st Wed	10.30am	Lyminge Friends	TC	862598
4th Wed	2.30pm	RM Circle	RVH	864256
Last Wed	7.30pm	Quiz Night	C&H	01303 3901011
2nd Sat	10am	Postling Church, Coffee Morning	PC	863536
2nd Sat	10am	Ethelburga Quilters	EVH	
4th Sun	9.30am	Farmers' Market	LVH	

<sup>1</sup> In term time only

<sup>2</sup> Except Jan and Feb

<sup>3</sup> Except Jan, Feb, and trip in Aug

<sup>4</sup> Except Aug and Dec

<sup>5</sup> Not held in August

<sup>\*\*</sup> Every three months

## WEEKLY EVENTS

Day	Time	Event	Where	Tel. no
Mon	10am	Bridge Club	LBC	863177
Mon	10.30am	Lyminge Larks (Singing)	LMC	07951 572920
Mon	10.30am	Chromatic Greys Art Class	EVH	07783 575802
Mon	5.15pm	Pilates	EVH	07951 698008
Mon	6.30pm	Ballroom/Latin/Salsa Dancing	TC	07966 751991
Mon	6.30pm	Judo Club	LVH	07369 225021
Mon	7pm	Pilates	EVH	07951 698008
Mon	7pm	Yoga	RMV	07977 503897
Tues	9.30am	Tai Chi Qigong	EVH	07402 203239
Tues	10am	Lyminge Baby & Toddler Group	TC	07870 405567
Tues	11.45am	Pilates	EVH	07834 839801
Tues	1pm	Seated Yoga	TC	
Tues	1.45pm	Pickleball	EVH	862696
Tues	6pm	Board Games Night	CC	
Tues	6.45pm	Short Mat Bowls	LVH	863842
Tues	7pm	Bridge Club	EVH	07790 160476
Wed	10am	Pilates	TC	07825 109670
Wed	10am	Baby/Toddler Group	EVH	07817 777975
Wed	11.15am	Singing for all (term time only)	TC/LMC	269602
Wed	7.30pm	Cantores Dominicae Choir	LVH	07778 333339
Thurs	10am	Lyminge Morning Art Group	EVH	01303 211364
Thurs	10.15am	Baby Rhyme Time	LL	0300 0413 131
Thurs	2pm	Lyminge Afternoon Art Group	EVH	07870 494644
Thurs	5pm	Pilates	TC	07951 698008
Thurs	6.15pm	Pilates	TC	07951 698008
Thurs	7pm	Short Mat Bowls	LVH	863842
Thurs	7.30pm	Ballroom and Latin Dancing	EVH	07967 979610
Fri	9.15am	Nikki Barratt Art Group	EVH	07871 494644
Fri	10.15am	Talk Time	LL	0300 0413 131
Fri	6pm	Junior Cricket Training Sessions	SPCC	07869 283195
Fri	7pm	Table Tennis	EVH	

**C&H:** Coach & Horses; **EGC:** Etchinghill Golf Club; **EVH:** Etchinghill Village Hall; **ELVH:** Elham Village Hall; **ERA:** Etchinghill Residents' Association; **ES:** Elham Square; **EVL:** Elham Valley Line Trust; **JF:** Jubilee Field; **LB:** Laing Bennett; **LBC:** Bowls Club; **LL:** Library; **LMC:** Lyminge Methodist Church; **LPC:** Lyminge Parish Church; **LPS:** Lyminge Primary School; **LVH:** Lyminge Village Hall; **LW:** Lord Whisky; **NP:** Nailbourne Court; **PC:** Postling Church; **PH:** Lord Whisky, Park House; **PVH:** Postling Village Hall; **RVH:** Rhodes Minnis Village Hall; **RM:** Rhodes Minnis Church; **RMCS:** Rhodes Minnis Cat Sanctuary; **RR:** Rigden Room; **SMC:** St Mary's Church Hall, Elham; **SMVH:** Stelling Minnis Village Hall; **SNL:** See Newsletter for info; **SP:** Sibton Park; **SPCC:** Sibton Park Cricket Club; **TC:** Tayne Centre; **TF:** Tayne Field; **WF:** Well Field



## St Mary and St Ethelburga Parish Church, Lyminge

### Sunday 6th July

Lyminge 10am WOW Service  
Paddlesworth 4pm Evensong BCP

### Sunday 13th July Whit Sunday - Pentecost

Lyminge 8am Holy Communion CW2  
6pm Choral Evensong

### Sunday 20th July

Lyminge 10am Holy Communion CW1.  
Paddlesworth 4pm Evensong BCP

### Sunday 27th July

Paddlesworth No Service.  
Lyminge 10am Family Praise

### Sunday 3rd August

Lyminge 10am WOW Service  
Paddlesworth No Service

Paddlesworth Church will be closed for repairs from 21st July until completion of work.

If more information is required please contact the Church Wardens,  
Derek Smith 01303 862508 or Mike Chinneck 01303 863911

## Valley Methodist Church

A warm welcome awaits you at our services followed by a time of refreshment and fellowship in our Lyminge Church or at our small and beautiful Chapel at Rhodes Minnis.

### LYMINGE

**6th July** 11am Mr Richard Blackwell  
**13th July** 10.15am Valley Service with Mrs Lisa Cooper  
**20th July** 11am Mr Tom Lewis  
**27th July** 11am Mr Dwight Harris  
**3rd August** 11am Rev Gill Songer (incl. Holy Communion)  
*Come and join our Songs of Praise in Lyminge Methodist Church on Tuesday, 22nd July, from 2pm.*  
**ALL ARE WELCOME!**

### RHODES MINNIS

**6th July** 9.30am Local Arrangement  
**13th July** 10.15am Valley Service at Lyminge  
Mrs Lisa Cooper  
**20th July** 9.30am A United Service at Elham  
Mr Tom Lewis  
**27th July** 9.30am A United Service at Rhodes Minnis  
Mr Dwight Harris  
**3rd Aug** 9.30am Rev Gill Songer incl Holy Communion

## Postling Church Services

**6th July** 8.30am Breakfast Service  
**13th July** 8.30am Morning Service  
**20th July** 8.30am Holy Communion  
**27th July** No Service in Postling

## Rector's Message



July is the time our teachers & school staff look forward to a well earned rest – Schools Out for Summer! We all need rest and God gave us the gift of Sabbath rest : a regular time to stop, to pause, to have a break from the busyness, stress and grind of work. To enjoy and take satisfaction from the goodness and beauty around us, to be refreshed, to reflect and take care of ourselves, spending time with those who care for us. It is in our best interests to accept this God given gift and not make ourselves too busy to receive it. Jesus said, "Come to me. Come away with me and you'll recover your life. Walk with me...watch how I do it. Learn from the unfurled rhythms of grace...Keep company with me and you'll learn to live freely and lightly." **Matthew 11: 28-30 (The Message Bible)**

*Rev'd Carol Bates*

## Lyminge Newsletter

### Terms & Conditions: Copy deadline for next edition - 18 August 2025

Please email your copy to the editor ([pbarnes20@icloud.com](mailto:pbarnes20@icloud.com)). Your payment must be received before your article or advert can appear in the Newsletter. Invoices will be issued and should be paid ASAP either by BACs, cheque, credit card or cash (details on invoice). **Business adverts** cost from £9.50 per month or £95.00 per year. **Personal and charity adverts and articles** from £3 per month, or £30.00 per year. The annual rate offers 12 entries for the price of 10. Please make cheques payable to '**The Lyminge Association**'. If you do not have email, a typed paper-copy may be left with the payment at the Library. The Newsletter is printed by Canterbury Print & Mail.

***The Lyminge Association accepts no liability for the accuracy of the advertisements or subsequent actions arising in conjunction with advertisers in the newsletter.***

**Further details from Peter Barnes (editor) on 01303 863737 or [pbarnes20@icloud.com](mailto:pbarnes20@icloud.com)**



# Etchinghill Update - July 2025



## **ETCHINGHILL RESIDENTS' ASSOCIATION (ERA)**

Chairman: David McCombe  
- 07939 076617 E-mail:  
[dmccombel@gmail.com](mailto:dmccombel@gmail.com)  
Website: [www.etchinghill.info](http://www.etchinghill.info)  
Facebook: Etchinghill Residents

**ERA FILM NIGHT - Etchinghill Village Hall - Monday 21 July**  
**- Doors Open at 7pm for a 7.30pm start. 'Conclave' 12a - 2024 - Run Time 2 Hours.**

Starring Ralph Fiennes, Stanley Tucci and John Lithgow.  
Cardinal Lawrence organises a conclave for one of the world's most secretive and ancient events - participating

in the selection of a new pope. Surrounded by powerful religious leaders in the halls of the Vatican, he soon uncovers a trail of deep secrets that could shake the very foundation of the Roman Catholic Church.

Entry fee is only £6 pp and includes a glass of wine, tea or coffee with biscuits on arrival and entry into a free raffle. There will be an intermission approximately halfway through the film, when refreshments will be served. New members are welcome, simply register and pay on the night, there's no need to book

## **ETCHINGHILL & THE LYMINGE PARISH NEIGHBOURHOOD PLAN**

A welcome, fresh approach has been taken in formulating the Neighbourhood Plan, with the recent formation of the Neighbourhood Plan Advisory Committee (NPAC). The committee, comprising LPC councillors and representatives from the villages of Lyminge, Rhodes Minnis and the hamlet of Etchinghill, met with Troy Planning, a group of Neighbourhood Plan specialist consultants, on 12 June. NPAC will be working over the next couple of months or so to

evaluate the information and

recommendations obtained from that meeting. Please look out for reports and updates in this Newsletter, on the LPC website and in other local media over the coming months. If you are a resident of Etchinghill and wish to join the Etchinghill Working Group (formed last year to eventually work on local NP projects) or simply require more information about Etchinghill's role within the Plan, please contact Dave McCombe (NPAC representative for Etchinghill) by email - [dmccombel@gmail.com](mailto:dmccombel@gmail.com)

## **ETCHINGHILL VILLAGE HALL (Charity 302736)**

**Chairman:** John White

**Bookings:** Anna Allan 07514 758936, E-mail: [d.allan142@btinternet.com](mailto:d.allan142@btinternet.com)

**Facebook:** Etchinghill Village Hall Kent

Our Pétanque Competition on Saturday 31st May was won by Ann Baker and Graham Barber. Glorious sunshine all day too. Watch this space for the date of the next Competition. See P32.

The Hall is now booked once a month for the Etchinghill Working Group meetings for their participation of the Neighbourhood Plan.

Delighted to say that the charity **Discover Adventure** have booked again this year for their Cycle Runs. We are the last stop before catching the ferry at Dover for their London to Paris runs.

**News contact: Karen Hickman**  
- 07521 372477 or email: [kdhickman@me.com](mailto:kdhickman@me.com)

## **ETCHINGHILL RESIDENTS' ASSOCIATION**

## **Film Night**

**MONDAY 21st July**

**"Conclave"**

12A (2024) - Run Time: 2hrs

Etchinghill Village Hall - 7 for 7.30pm

Entrance Fee £6pp

Open to new and existing members  
Free Refreshments and Raffle

[www.etchinghill.info](http://www.etchinghill.info)

## **Have you trimmed the vegetation bordering your footpaths?**

If yes....thank you!!

If not, can you please do so ASAP so that pedestrians have a clear walk way.

# District Councillors' update

## – July 2025

Asian Hornets have been found in the Romney Marsh area and now in Hythe. They pose a threat to honey bees and other pollinators. A key feature is the abdomen is almost entirely dark apart from the 4th segment which is yellow. Please look out for these highly aggressive non-native predatory insects and report any sightings to [alert\\_nonnative@ceh.co.uk](mailto:alert_nonnative@ceh.co.uk)

F&HDC will be contacting voters that are currently registered for a postal vote to reapply for it. If you do not reapply for your postal vote by the existing expiry date your voting preference will be cancelled and will have to go to a polling station to vote. If you receive an email or letter about this over the coming months, please respond to it as quickly as possible to ensure your postal vote is in place. Don't worry if you have a postal vote in place and don't receive an email or letter from F&HDC, you are not part of this phase of renewal. Since 2022 you must reapply for your postal vote every three years.

Every Monday from 10am until Midday the Kent Enablement Service will be at F&HDC, Civic Centre. The Help Desk is available for information and advice with letters, bills, activities, college, and education courses, paid and voluntary employment, keeping safe, housing, health and wellbeing, benefits forms, etc. The service is free, and no appointment is needed. You can also telephone 03000 411345 or email [KentEnablementService@kent.gov.uk](mailto:KentEnablementService@kent.gov.uk) for advice.

Upcoming work during June for the Folkestone – A Brighter Future project will start the installation of traffic management at these new locations; Radnor Park roundabout, for the completion of the new cycle ways at Middelburg Square West, Middelburg Square East, Shellons Street Westbound, and Middelburg Square South for the concrete infill to the pedestrian subways.

Contact Elaine Martin: [elainemartin@folkestone-hythe.gov.uk](mailto:elainemartin@folkestone-hythe.gov.uk)

**Folkestone Sports Centre** – It is great news that the Sports Trust has announced that it has purchased Folkestone Sports Centre and intend to re-open facilities as soon as possible. Once again, Roger De Haan has come to the rescue of Folkestone and instead of being considered for housing it is once again going to provide sporting facilities, including swimming for the Community. The Sports Trust will run Folkestone Sports Centre alongside the Three Hills Sports Centre and F51 Skate Park. This is very welcome news for the District.

**Local Government Reorganisation** – initial feedback has been received from the Secretary of State. This feedback will need to be considered by all Kent & Medway Councils before any decisions are made on the next steps. Final proposals have to be submitted by the end of November 2025. However, the new administration have asked that this deadline be extended

and we wait to hear the outcome of this request. Meanwhile meetings are continuing both within FHDC and across the county to discuss the options being considered.

**Road of Remembrance** - We have recently been given an update on the landslip works above the Road of Remembrance undertaken by KCC. It is a very complicated scope of work that is required and the design has been agreed in principle. Once the contract is awarded, work is expected to take approximately six months.

**Personal** – I have been overwhelmed by the flowers, messages and cards on the death of my husband Roy on 11 May. Please accept my thanks for such support which has been hugely welcome and has given me some comfort. After over 60 years together, I am finding it a very challenging time and appreciate enormously the kindness of friends, family and residents. Just to make the situation more difficult I had a fall and broke my hip spending a week in hospital just before the funeral had taken place. My grateful thanks go to all the doctors, nurses and staff at the William Harvey Hospital for their speedy and skilful care to make sure I could get to the funeral. Thank you.

**Contact:** Jenny Hollingsbee

[jenny.hollingsbee@folkestone-hythe.gov.uk](mailto:jenny.hollingsbee@folkestone-hythe.gov.uk)

## Reflections

Who on earth do you think you are?

Your nudity hasn't impressed me so far.

You stand there with wrinkles galore,  
looking a lot older than seventy-four.

You've by-pass scars and a new hip,  
and plumbing fixtures prone to drip.

With receding hair and a glass eye,  
your charisma's gone; I can't lie

You've shrunk from six to five eight,  
with high BP you're a stroke candidate.

N H S spectacles and a hearing aid  
complete the picture on this parade.

I know you well...but I'm being polite,  
when I say you look a sorry sight

You're smiling; some humour I see;  
in lots of ways you're much like me.

*I won't see the old coot any more today,  
'cos I've turned the mirror the other way.*



Written by:  
JT Sandgate Creative Circle  
Tel - 07435580028





The Surgery, Lyminge  
 Harbour Medical Practice,  
 Folkestone  
 Hawkinge & Elham  
 Valley Practice  
 New Lyminge Surgery  
 Oaklands Health Centre  
 Hythe  
 Sun Lane Surgery,  
 Hythe  
 White House Surgery,  
 Folkestone



# Folkestone, Hythe & Rural

Primary Care Network

SUPPORT IN YOUR COMMUNITY



## Services available in your Primary Care Network (PCN)

- Social Prescribing
- Occupational Therapy
- Cancer Support
- Medication Support
- Mental Health Support
- Multidisciplinary Team for Complex Health & Social Care Support
- Dietetics
- Musculoskeletal First Contact Practitioners
- Minor Illness Hub

To access any of these services or support, contact your GP surgery or complete an e-consult

**GET IN TOUCH**  
[www.fhrpcn.co.uk](http://www.fhrpcn.co.uk)



# IN AID OF Lord Whisky Animal Sanctuary Fund

CHARITY NUMBER: 283483

## JOIN US FOR OUR Boot & Summer Fayre

SATURDAY 12TH JULY 2025

Park House, Stelling Minnis, Nr. Canterbury, CT4 6AN

Cars £10 vans £15 (Boot Fayre Sellers)  
 Donation on entry please

- Hot & Cold Refreshments
- Ice Cream Van
- Entertainment for the whole family
- Classic Cars
- Face Painting
- Motorbike food run parade \*

FOR MORE INFORMATION ON HOW TO JOIN THE MOTORBIKE FOOD RUN, PLEASE VISIT OUR WEBSITE AND FACEBOOK PAGE.

JOIN US FOR A WONDERFUL DAY OUT, ENJOY SOME GREAT BARGAINS, AND SUPPORT OUR SANCTUARY.

All funds raised will go directly towards providing food, care, and treatment for the animals in our care.



[WWW.LORDWHISKY.CO.UK](http://WWW.LORDWHISKY.CO.UK)

01303 862622

[LORD.WHISKY@BTINTERNET.COM](mailto:LORD.WHISKY@BTINTERNET.COM)

GATES  
OPEN  
8AM



## Autumn Meditation Course BOOKING NOW

8 sessions from Saturday 4 October 2025

(1 per week)

1.30pm - 4pm

Location: Harry Margary Hall  
 Lympe Village  
 CT21 4LE

Learn some new skills to support  
 your health and wellbeing

Contact Ellen for more information or to book

Call: 07740857109

Email: [ejgarrard2712@gmail.com](mailto:ejgarrard2712@gmail.com)

Visit: <https://ellengarrard.co.uk>



Children's Musculoskeletal &  
 Orthopaedic Physiotherapy

I am an Advanced Practice  
 Children's Physiotherapist in  
 Musculoskeletal and Orthopaedics,  
 specialising in children between  
 the ages of 0-16 years.

Please get in touch for more  
 information on how I may be able  
 to help your little one.

**Call Lucy: 07841 518234**

[lucy@footprintschildrensphysio.co.uk](mailto:lucy@footprintschildrensphysio.co.uk)

[www.footprintschildrensphysio.co.uk](http://www.footprintschildrensphysio.co.uk)



# POSTLING GLASSBLOWING

## Postling Glassblowing

*A Bespoke Glass Blowing  
Experience*

Come and enjoy blowing some  
glass to create your own piece.

**Please contact us for further  
information:**

(07951) 628173

postlingglassblowing@gmail.com

Inst: @postlingglassblowing



PIC-COLLAGE

## Your Local Pharmacy

*Lyminge  
Pharmacy*

- NHS & Private Prescriptions
- Travel and Speciality  
Vaccination Clinic
- Weight Loss Clinic
- FREE Delivery Available
- Private Prescriber Available
- Emergency Medication Supply
- NHS Flu & Covid Vaccinations
- Free Blood Pressure Checks
- Pharmacy First Service
- ONE YOU Stop Smoking  
Provider



Delivering prescriptions to  
the local community of  
Lyminge, Elham, Etchinghill,  
Postling, Hythe, Rhodes Minnis,  
Stelling Minnis and the  
surrounding areas

Ask a member of staff  
to learn more

Contact us at

Tel: 01303 862425

Email: [lymingeinfomed@gmail.com](mailto:lymingeinfomed@gmail.com)

Or come in to the store:  
21 Station Rd, Lyminge, Folkestone  
CT18 8HQ

## LYMINGE GARAGE SALE - SUNDAY 14 SEPTEMBER

### GARDEN VISIT

**The Orangery  
Canterbury  
Kent  
CT4 7DB**

**15<sup>th</sup> July 2025**

**2:15pm for 2:30pm**

**Entrance Fee £11 to include  
tea/coffee and cake.**

**To book a place call Anne on 07703 149008 or Heather on 07427 664084  
or email [Lymingegardeners@gmail.com](mailto:Lymingegardeners@gmail.com)**



### SUMMER SHOW PLANT SALE and REFRESHMENTS

Saturday 19th July  
at The Tayne Centre, Lyminge

Plant Sales, Doors Open for Show and Refreshments from  
12:30pm

Presentation of Cups 3:30pm  
(Staging 8:30am until 10:30am)

Show Schedules will be available in  
The Library and will be emailed to members  
Further details from John and Sara Packer on 01303 862816  
or email: [lymingegardeners@gmail.com](mailto:lymingegardeners@gmail.com)  
All entrants welcome – you don't need to be a member

For more information about the Gardeners' Society please email:  
[lymingegardeners@gmail.com](mailto:lymingegardeners@gmail.com) or call Anne on 07703 149008



# FABRIC

CONSTRUCTION GROUP

**SPECIALISTS IN PERIOD  
PROPERTY BUILDING &  
MAINTENANCE**

OVER 20 YEARS EXPERIENCE ACROSS  
ALL ASPECTS OF MAINTENANCE TO PERIOD  
PROPERTIES USING TRADITIONAL  
METHODS AND MATERIALS

CONTACT US TO DISCUSS YOUR PROJECT  
EMAIL: [INFO@FABRICCONSTRUCTIONGROUP.CO.UK](mailto:INFO@FABRICCONSTRUCTIONGROUP.CO.UK)  
CALL: 07912 757311

[WWW.FABRICCONSTRUCTIONGROUP.CO.UK](http://WWW.FABRICCONSTRUCTIONGROUP.CO.UK)



**FAMILY PRAISE SERVICE**  
**St. Mary and Ethelburga Church**  
**Sunday 27th July**  
**10am**



Is your bear brave enough to jump off the Church tower?  
 Why not make him a parachute and give it a go.  
 Kids, Mums, Dads, Grandmas and Granddads  
 Come and join the fun followed by 'Teddy Bear Jump' & BBQ

# Summer Show

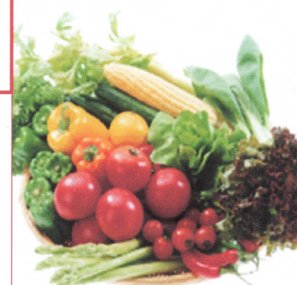
**At Rhodes Minnis**  
**Village Hall**



**Saturday 2nd August**  
**Opens 2:30 pm**  
**Prizegiving 4:00pm**

**Entries From 8:30am - 10:30am**

**Refreshments**  
**Viewing Free**  
**Raffle**



**SCHEDULES available Tel: 01303 862616**

<https://rmvh.org.uk/>

**Charity No.800345**

**Lyminge's very own band...**

**The Undecided**



welcomes the new manager of the

**coach & horses**

**Friday 11th July @ 7:30pm**



**60'S 70'S 80'S covers and more!**

**G&T**

**LYMINGE'S NEW DUO SENSATION**  
**PLAYING HITS FROM**  
**'60s ONWARDS**

enjoy the pub's new  
 Sunday Lunch menu



**THE COACH AND HORSES**

**SUNDAY 20TH JULY • 3PM**



# RHODES MINNIS CAT SANCTUARY

Registered Charity 262248

01303 862243

[rminniscats@gmail.com](mailto:rminniscats@gmail.com)



# OPEN DAY

**Sunday 20 July 11am - 4pm**

**At Seathwaite, Green Lane,  
Rhodes Minnis, CT4 6XU**

## ***THE GARDEN PARTY WITH ALL THE CATS***

- **HOMEMADE CAKES AND SAVOURIES**
- **OUR FAMOUS STRAWBERRY MERINGUES**
- **TEAS, COFFEES AND REFRESHMENTS ALL DAY**
- **BARBEQUE - PLANTS - TOMBOLA**
- **HAMPER AND BARROW OF BOOZE RAFFLES**
- **CRAFT STALLS**
- **COLLECTION OF TEDDY BEARS FOR SALE**

***ADMISSION BY DONATION, CASH OR CAT FOOD***



**Please bring some cash  
Not all stalls can take cards**





# Lyminge Friends

Our talk on **Wednesday, 2nd July** is **"The Living Land" – Romney Marsh Wools**. The speaker is **Kristina Boulden** who will speak about this family run farm, the sheep, the process and the benefits of wool.

On **Wednesday, 6th August** **Lyminge Friends** will be hosting a Summer Lunch which is being held in Lyminge Church and Gardens, hopefully the weather will be good to us. The cost is £10 which includes food and a glass of wine/soft drinks. There will also be a raffle with some fantastic prizes.

**Everyone welcome**  
**Entry is £4**  
**for Social Meetings**  
**(including Tea/Coffee)**

*We are a friendly social group and welcome new members and visitors - so just drop into a meeting, or if you'd like to talk to one of us first, please call 07904157897. All meetings are held in The Methodist Church, Church Road, Lyminge from 10.30am to 12noon unless stated otherwise.*

## Fifth Trust Update

[www.fifthtrust.co.uk](http://www.fifthtrust.co.uk)

We're delighted that the Vineyard Café has been nominated in the Kent Life Food & Drink Awards 2025 for Outstanding Service of the Year - a proud moment for our entire team!



Located in the heart of the Elham Valley, the Vineyard Café is a thriving social enterprise café where our students with learning disabilities develop essential life skills in a supportive, inclusive environment. From welcoming guests with a smile to serving up delicious coffee and homemade treats, our team goes above and beyond to create a warm and friendly atmosphere. It's a recognition of the hard work and dedication that our students and staff pour into everything they do.

You can help us win! Voting is open now, and your support means the world to us. You can vote here under item 5: <https://tinyurl.com/voteFTC>

Editor: [pbarnes20@icloud.com](mailto:pbarnes20@icloud.com)

# CANTORES Summer Prom Concert

**Lyminge Village Hall**

**Saturday 12<sup>th</sup> July 4:00 pm**

**Sing along with the traditional prom numbers**

**Refreshments and Raffle**

**Tickets on the door : £10:00**

**Children free**



Registered Charity No 1087409

## Communiqué from Social Enterprise Kent (SEK) 10th June 2025

SEK receives a portion of the DEFRA £13.6 million to help families and charities reap benefits of surplus farm produce

- New funding will unlock tonnes of surplus farm produce for redistribution across Kent and Medway
- Cold storage and new gleaning programme for Kent, to connect more farmers with local food charities
- CEO Rebecca Smith: "A lifeline at a time when so many are choosing between heating and eating"

Social Enterprise Kent (SEK) is delighted to have been awarded a grant by the Department for Environment, Food and Rural Affairs (DEFRA), to rescue surplus

produce from local farms and ensure it reaches families experiencing food insecurity.

The grant, part of the Government's "Tackling Food Surplus at the Farm Gate" scheme, will enable SEK to launch a new redistribution programme focused on unlocking the environmental and social value of surplus vegetables, fruits, and greens grown in Kent. Through investment in an electric van, walk-in cold storage, and, through liaison with local farmers and existing gleaning projects, SEK aims to enhance local infrastructure to collect and redistribute an estimated 50 tonnes of fresh food by March 2026, with a view to sustainability long beyond that date.



## LYMINGE HISTORICAL SOCIETY

We are taking our usual summer break in July and August.

Meetings will resume in the Autumn.

The next meeting will be at 7.30pm on Tuesday 2 September  
at The Tayne Centre, Church Road, Lyminge CT18 8JN

### **Engineering Richborough** **Speaker: Colin Varrall**

Looking for summer reading? Why not try Lyminge a history Part 14, on sale at Lyminge Library and Lyminge Village Store, only £8?

- **Lyminge in 1921 – Part 2.** Completes the account begun in Volume 13 of Lyminge viewed through the 1921 Census, looking at some of the businesses of the time that provided services to residents and employment opportunities for many people.
- **A Watercolour of Lollipops.** The story of a newly discovered painting from the 1860s showing this well-known former almshouse that still stands on Canterbury Road.
- **The East Window in Lyminge Parish Church.** Examines how the window was designed and the men who made it.
- **The Battle of Britain: the view from Lyminge.** The story of the great air battle of 1940 and its impact on Lyminge, including how historians have got the story of Polish pilot Karol Pniak, shot down over Longage Hill, wrong for many years.
- **Winifred Shillingford: the forgotten artist of Etchinghill.** The never-before-told story of the village benefactor that begins in the Wild West, covers her war-time nursing service and reproduces the only known images of her paintings.

**This Newsletter can be  
viewed online and in  
colour at**  
[www.lyminge.org.uk/newsletter/](http://www.lyminge.org.uk/newsletter/)



**RAISING FUNDS  
FOR OUR  
VERY SPECIAL  
CHURCH**

### **ST MARY'S & ST ETHELBURGA'S CHURCH** Church Rd, Lyminge, Folkestone CT18 8EH

Originally built in Anglo-Saxon times in the 7thC.  
Re-built in Norman times in the 11thC.  
Now a Grade 1 listed building.



### **IN CONCERT**

**Singing for the  
serious fun of it.**

enquire [JMS@gmail.com](mailto:JMS@gmail.com)  
07482 840089  
(Based in Eythorne, Dover).

**SATURDAY**  
**26 JULY 2025**  
**7.00PM.**

**ADMISSION**  
**£10**

Tickets available on the door.  
In advance from Howard Grover - 07831 128097  
From 'Snippers And Clippers' Station Road, Lyminge

### **JMS - Just Men Singing - Who we are:**

We're an inclusive, welcoming choir of about 40 men aged 18 and over. We don't audition, and you don't need to read music; we teach you what you need to know.

We were founded just two years ago by a group of men whose experience varied widely. Thanks to the two professional musicians who lead us we have progressed quickly; we now stage eight or nine concerts a year and have already raised £7,500 for local charitable causes.

For most of our singers, the social experience of working with a group of like-minded men in a collective endeavour is as important as the music – in other words, we sing for the serious fun of it. Please contact 07842 840089 or [JMS@gmail.com](mailto:JMS@gmail.com) for more details.

### **Update from the Lyminge Community Hub**

We are all very pleased to confirm that Folkestone Hythe District Council has decided to list Jubilee House as an Asset of Community Value (AVC) under the Localism Act. This has been some time coming but it does emphatically confirm everybody's understanding that the building has been used as a community centre for over 20 years.

The next stage is to renew our conversations with the council and hopefully convince them to allow us to use all or part of the building as the Lyminge Community Hub. This will inevitably take some time, but nothing is a given. The earliest that we can hope for some level of occupation will now be October, because of the contracts the council has already entered into with the caretaking organisation currently operating in the building.

In the meantime there will be an enormous amount of work to do in preparing and organising the building, if indeed we are to begin the hub from the premises. It is not exactly Jeremy Clarkson opening a pub but if you have seen the TV programme you'll get an idea of the issues to be resolved (on a smaller scale). There will be opportunities for both financial contributions and to welcome new volunteers. We look forward to offering invitations for support as matters progress. Watch this space.

**Kingdom**  
CARPET CO.

- Carpets Supplied & Fitted
- Carpets Professionally Cleaned
- Carpets Whip Edged & Cotton Bound

Whatever your carpet need, give us a call for a  
**FREE** estimate / assessment.

Over 50 years combined experience.

**07943 764 442**

Email: [kingdom.carpet.co@gmail.com](mailto:kingdom.carpet.co@gmail.com)



# LYMINGE AND ELHAM VALLEY STROKE SUPPORT

Have you or  
someone  
you know  
been  
affected by  
a stroke?

Come and join our informal support  
group (no membership fees to pay).

We usually meet on the 1<sup>st</sup> and 3<sup>rd</sup>

Mondays of the month between

10:00am and Noon

at The Coach & Horses, Lyminge

New faces very welcome

July

7<sup>th</sup> July - Trip to Whitstable  
(contact details below for more  
information)

21<sup>st</sup> July - Get-together at The  
Coach & Horses

For more information, to check the dates of meetings/events, or if  
you would like support but are unable to attend the meetings  
Email: [Lymingestrokesocial@gmail.com](mailto:Lymingestrokesocial@gmail.com)  
or Telephone Fran on 07846 177 409 or Heather on 07427 664 084

# THE TOWER THEATRE

THE  
TOWER  
THEATRE

FOLKESTONE

AFHODS  
THE FOLKLORE, MUSIC, OPERA  
& DRAMATIC SOCIETY OF



The Hijacked Hollies  
Saturday 12 July - 7:30pm



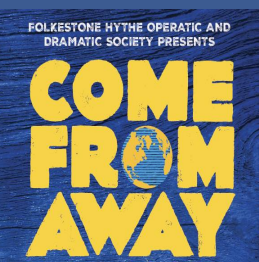
Rewind to 70s Divas  
Saturday 19 July - 7:30pm



On The Run  
Saturday 26 July - 7:30pm



Freddie & Queen  
Saturday 2 August - 7:30pm



BOOK, MUSIC AND LYRICS BY  
IRENE SANKOFF AND DAVID HEIN  
FRIDAY 12<sup>TH</sup> & SATURDAY 13<sup>TH</sup> SEPTEMBER  
FRIDAY 19<sup>TH</sup> & SATURDAY 20<sup>TH</sup> SEPTEMBER  
(TWO PERFORMANCES ON THE 13<sup>TH</sup> & 20<sup>TH</sup>)



Punk & Plume  
Saturday 30 August - 8pm



Happy Box of Imps  
Friday 26 September - 7:30pm



Barefoot Opera  
Wednesday 1 October - 7:30pm



Fearlessly Taylor  
Saturday 4 October - 7pm

For full details of all our forthcoming shows and to book tickets, please visit  
[towertheatrefolkestone.co.uk](http://towertheatrefolkestone.co.uk) or call the Box Office on 01303 223925

The Tower Theatre, North Road, Folkestone, Kent CT20 3HL

Registered Charity 1180504



Every 4th Sunday  
9.30 - 12.30

## LYMINGE ARTISAN & FARMERS MARKET

**25 May**  
**22 June**  
**27 July**  
**24 August**

LYMINGE VILLAGE HALL  
WOODLAND ROAD CT18 8EW

Editor: [pbarnes20@icloud.com](mailto:pbarnes20@icloud.com)

**Freshly Prepared**  
**Breakfasts & Light Lunches**  
**Home Baked Cakes**  
**Vintage Afternoon Teas**  
**Coffees & Teas**  
**Takeaway Available**  
**Private Functions**

Open Tuesday to Friday  
9am - 3pm

Saturdays, open 8.30am - 1.30pm  
(breakfasts only)  
Dog Friendly

THE COFFEE CABIN TEA ROOM LTD.  
CANTERBURY ROAD, LYMINGE, KENT.  
CT18 8HU. 01303 864222  
Instagram @thecoffeecabintearoomltd  
Find us on Google Maps

## Information & Advice: Drop In Sessions

Every Monday  
Drop In Sessions are  
open from 10AM - 1PM

Lyminge Library, 7-9 Station Rd,  
Lyminge, Folkestone CT18 8HS

Need support with benefits, available services or other issues  
affecting later life? Our Information & Advice Drop-In offers  
free, confidential guidance on a range of topics, including:

- ✓ Benefit checks to see what you may be entitled to
- ✓ Blue Badge applications
- ✓ Local community resources
- ✓ Health & wellbeing services

No appointment needed—just drop in and  
speak with our friendly team!

Call **01303 269602** for more information



Registered charity number 1125274.  
Company number 6589817.  
© Age UK Hythe, Lyminge and Ashford 2025.




## Singing FOR ALL

Funded by the National Lottery, everyone is  
welcome - no matter your experience!

**FREE** and booking is not required.

For further information call us on 01303 269602

### DATES FOR YOUR DIARY

Wednesday 2<sup>nd</sup> July  
11:30AM - 12:30PM  
at The Tayne Centre.  
Church Road, Lyminge, CT18 8JN

Wednesday 9<sup>th</sup> and 16<sup>th</sup> July  
11:30AM - 12:30PM  
at the Methodist Church.  
Church Rd, Lyminge, CT18 8JA

We will break for the summer holidays returning  
Wednesday 17<sup>th</sup> September.



Registered charity number 1125274.  
Company number 6589817.  
© Age UK Hythe, Lyminge and Ashford 2025.



## AGE UK



Achieve Life's Fullness

### Feeling low, worried, or stressed? We are here to help.

NHS Kent and Medway Talking Therapies, provide a range of  
support to thousands of people to help them to improve their  
mood and find ways to manage.

We understand that taking the first step to make a self-referral  
can feel overwhelming. That's why Age UK Hythe, Lyminge, and  
Ashford are here to guide you through the process, offer  
support, and help you access the assistance you need.

If you are 17.5 years or over and registered with a GP in Kent  
and Medway we can help you find the tools you need to get life  
back on track.

**Call or email us today**

**01303 269602**

admin@ageukhla.org.uk



withyou



A nutritious and  
freshly prepared  
2 course meal delivered  
directly to your door

**Price  
£9.00**



Delivered by one of  
our dedicated team  
members, hot and  
ready to eat. No  
reheating necessary.  
The driver will carry  
out a welfare check  
and dish up if required.

#### Areas covered

Hythe, Lyminge, Ashford,  
Folkestone, Dymchurch  
and surrounding areas.

**Available –  
7 days per week**

(including bank holidays)  
Order up to 10.15am the  
day you want a delivery.

For more information, please  
contact the admin team 01303 269602  
admin@ageukhla.org.uk

Registered charity number 1125274.  
Company number 6589817. © Age UK Hythe and Lyminge 2025



# LYMINGE PARISH COUNCIL

## *For Lyminge, Etchinghill and Rhodes Minnis*

### Council news

Planning & Licencing update:  
LPC Comments

25/0338/FH - Longage Manor  
Farm - Neither support or  
object

25/0892/FH - Westaway,  
Teddars Leas Road - No  
objection

25/0897/FH - Uplands,  
Westfield Lane - No objection  
25/0926/FH - Eglantine,  
Westfield Lane - No objection

More detailed comments can  
be found on the FHDC  
Planning Portal.

Jubilee House, Everist Court  
- After careful consideration,  
the district council has decided  
to list Jubilee House as an  
Asset of Community Value.

Committee chairs:

Neighbourhood Plan:

Cllr Sue Baldwin

Planning & Licensing:

Cllr Emily Arnold

Community Engagement &

Events: Cllr Sarah Fagg

Finance & Administration:

Cllr Sandra Harrison

Personnel & HR:

Cllr Sue Baldwin

Councillor contact details can  
be found on our website.

### Meeting dates

The following meetings all take place at Lyminge Village Hall

Neighbourhood Plan - July 1st - 17:30

Finance & Administration - July 1st - 18:30

Community Engagement & Events - July 2nd - 18:00

Full Council - July 8th - 19:00

Planning & Licensing - July 17th - 9:30 - Etchinghill Village Hall

Any additional meetings will be on our noticeboards/website.

### Neighbourhood Plan

Our committee recently met with the new consultant and hopefully many of you will have spoken to Cllr Sue Baldwin at the Lyminge Festival and are ready to get involved with the NHP!

The committee put several questions to the consultant to help better understand the NHP process and how we can best communicate with the parish to elicit an accurate representation of the parish's ambitions. Unfortunately, since that meeting and the government's spending review, it has been announced that the financial and technical support previously given has been discontinued.

This will impact how things work going forward but will not deter us from or derail the plan.

For updates, please email  
[neighbourhoodplan@lymingeparishcouncil.org.uk](mailto:neighbourhoodplan@lymingeparishcouncil.org.uk)





## CONTACT INFORMATION

General - [clerk@lymingeparishcouncil.org.uk](mailto:clerk@lymingeparishcouncil.org.uk)

Handyman - [fred@lymingeparishcouncil.org.uk](mailto:fred@lymingeparishcouncil.org.uk)

Neighbourhood Plan -  
[neighbourhoodplan@lymingeparishcouncil.org.uk](mailto:neighbourhoodplan@lymingeparishcouncil.org.uk)

# PARISH ON PARADE!

*Join us for our summer event!*

*Taking place 18th, 19th and 20th July.*

## 18th July

Jubilee Field

Live music 16:00 - 20:00

Silent disco 20:00 - 22:00

Food & Drink

Stalls

Axe Throwing /Games  
& Bungee Trampoline

## 19th July

Jubilee Field

Live music 12:00 - 22:00

Tug of war competition 14:00

Bake Off competition judging

Food & Drink

Stalls

Face painting / Inflatables

Axe Throwing / Games

Bungee Trampoline  
& MORE

## 20th July

Tayne Field

Boot Fair 08:00 - 12:00

Stalls

Food & Drink

Inflatables / Axe Throwing  
& MORE



*With thanks to our primary sponsor*  
**Pentland Homes**

[www.lymingeparishcouncil.org.uk](http://www.lymingeparishcouncil.org.uk)

[clerk@lymingeparishcouncil.org.uk](mailto:clerk@lymingeparishcouncil.org.uk)



## Thoughtful Food....

...is a group of local volunteers looking at our food, and how this impacts climate change. Our aims are to support people to produce more of their own food, and to shop locally, sourcing seasonal produce. We also run a community allotment in Lyminge and welcome new members.

**Contact:** [thoughtfulfoodgroup@gmail.com](mailto:thoughtfulfoodgroup@gmail.com) or on Facebook and Instagram [@thoughtfulfoodgroup](https://www.instagram.com/thoughtfulfoodgroup)

Next **Thoughtful Food** meeting, **MONDAY 28th July**. Venue to be confirmed.

**July is busy**, busy in the vegetable garden and it can sometimes feel a bit overwhelming. But there is much to be joyous about. Not least eating your fresh and flavoursome produce. Here is a plan! Hopefully it will help.

### Sowing:

- Early July: Sow dwarf beans, beetroot, and carrots directly.
- Mid-July: Sow chicory for radicchio.
- Any time: Sow salad onions, chard, lettuce, and endive.
- After Mid-July: Sow Florence fennel, coriander, chervil, and Chinese cabbage.
- August (wait): Wait until August to sow spinach and salad rocket.

### Planting:

- Plant out leeks, brassicas, and salads.
- Plant out any brassicas or Brussels sprouts sown in May.
- Plant out any kalettes or autumn cabbages sown earlier.
- Plant potatoes, if not already in the ground.

### Harvesting and Maintenance:

- Continue harvesting summer crops like courgettes and raspberries.
- Harvest and replant empty spaces using the no-dig method.
- Water thoroughly, especially after sowing, and keep terracotta pots damp.
- Make compost, utilizing hedge prunings and other garden waste.
- Control pests like slugs with the help of toads and ground beetles, which are encouraged by the no-dig method.

### Key Considerations for No-Dig:

- The no-dig approach helps with pest control (more toads, ground beetles) and rapid establishment of plants.
- Transplanting is often successful even with small plants due to the well-established root systems.
- Interplanting can be done by sowing between maturing vegetables.

Thanks as always to Charles Dowding, our hero! <https://www.charlesdowding.co.uk/>

## This is the fifth of our articles relating to Permaculture

The next principle relates to last month's (obtain a yield), and looks at self-sustaining systems.

**Principle:** Self-sustaining (closed-loop) systems. In a world with dwindling resources (we are currently using more than the Earth can provide long-term), we can use this principle to reduce waste and create more resources in a sustainable way. A self-sustaining (or closed-loop) system creates outputs that help to begin the cycle of production again, without fresh resources being brought in from outside, which often involves extra cost or labour (or both!)

**In action:** Some of the best examples of this can be seen in the gardening world. Growing a veg garden, you might buy seeds, compost and fertiliser at the beginning of the season, grow your produce (obtain a yield!) and then prepare for the next growing season. This has many elements of an open-loop system, with seeds, compost etc being brought in from outside. To close this loop and make a self-sustaining system, you could save some plants to go to seed, and save your own seeds for the following season. You could compost your old plants, grass cuttings and food waste to create your own compost, and indeed fertiliser too, making the previous waste products into the new resources you need.

## Very easy Cherry Jam

If you are not lucky enough to have cherry trees it should be easy to find some local ones to make this easy cherry jam. Wonderful on bread and butter(!), on ice cream, in a sponge cake.....the scrumptious jars make great gifts for friends or family.

**Ingredients:** 2kg of cherries (stoned) : 1.2kg preserving sugar : Juice of 2 lemons

### Method

- Step 1 - Put two saucers in the freezer for testing the jam later on. Tip the cherries, sugar and lemon juice into a large, heavy-based saucepan and simmer uncovered over a medium-high heat for 35-50 mins, stirring frequently until thick and glossy.
- Step 2 - After 35 mins, spoon a little of the jam onto one of the chilled saucers. Leave for 1 min, press a fingertip into the jam. If it starts the wrinkle, it's ready. If it slides away, continue to boil the jam for 10 mins, then test again on the other saucer.
- Step 3 - Spoon the jam into sterilised jars and seal. Will keep for six months unopened (when stored in a dark, cool place), or opened in the fridge for three months.



**Very Best Wishes from Thoughtful Food**





**Where are all the butterflies?** Following the results of the Big Butterfly Count 2024, Butterfly Conservation have declared a butterfly emergency, and we need your help more than ever before. By taking part in Butterfly Conservation's Big Butterfly Count - a UK wide survey, you can help assess the health of our environment simply by counting butterflies.

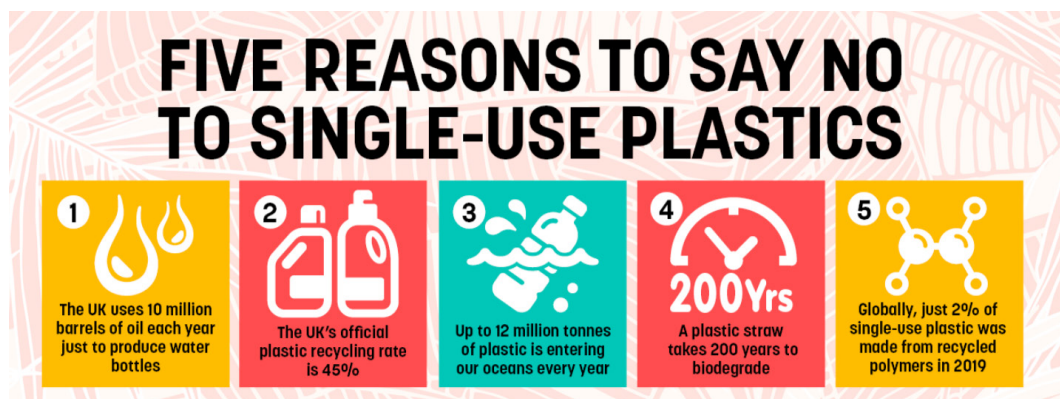
## How do I take part?

To take part Visit <https://bigbutterflycount.butterfly-conservation.org/> to:

1. Get Ready - Download a handy butterfly ID chart to identify and record the butterflies you spot.
2. Join in - Between **Friday 18th July** and **Sunday 10th August** choose a place to spot butterflies and moths. How about visiting the many open spaces in our parish.?
3. Watch for 15 minutes. Then add your counts on the website or via the app and look at the fascinating interactive map to see how your data is contributing to conservation science and research.

On a related note, don't forget Bees' Needs Week, 14 to 20 July, organised by DEFRA, to raise awareness of the importance of bees and other pollinators, and to share ideas, actions and activities that highlight the ways in which everyone can help them thrive. See <https://www.gov.uk/government/publications/bees-needs/bees-needs-campaign>

## Are you looking for ways to be part of the solution to plastic pollution?



**Plastic Free July** focuses on small changes each one of us can make to reduce plastic waste by choosing to refuse single-use plastic.

What 3 things you can do, to make that small step to start making a big difference

- Refilling reusable water bottles from the tap
- Bringing a reusable cup or sitting and enjoying a real cup
- Switching from plastic wrap to reusable containers or wax wraps.

## Top recycling tip!

Looking for somewhere to recycle empty medication blister packs? Superdrug in Folkestone has a dedicated bin.

## North Downs Forum - Elham Village Hall, 17 July, 7pm

Organised by Councillor James Butcher of Folkestone and Hythe District Council, the aim of the meeting on 17 July is to highlight all the attractions and points of interest across the North Downs area. F&HDC have been producing a series of tourism maps, and the last one to be completed is for North Downs, so this is a chance to get places and businesses literally on the map (we'll bring a big map to the meeting...). Please come with your local knowledge and ideas. And please invite along anyone who you think would be interested. It will be in the Peggy Pike Room of Elham Village Hall at 7pm on Thursday 17 July.

# Community Hall Details



**Large hall with stage, new kitchen and flexible hire**

Excellent parking facilities, disabled access, proximity to playgrounds and playing fields. Beautiful countryside location.

**Capacity:**

200 people dancing / audience seating, 100 with tables  
Small rooms available for up to 50 seated

Find out how we can help you with your next event:

**BOOK ONLINE:** [lymingevillagehall.org.uk](http://lymingevillagehall.org.uk)

**EMAIL:** [admin@lymingevillagehall.org.uk](mailto:admin@lymingevillagehall.org.uk)

**INFO:** 07547 545 601

Full pricing can be found on our website.

**Guideline prices:**

Main Hall hire: £88.40 (Fri / Sat evenings)

£47.60 (Sat / Sun morning or afternoon)

Find us on Facebook

Registered charity 28145

## ETCHINGHILL VILLAGE HALL HIRE FEES

The next time you are thinking of holding a function why not try Etchinghill Village Hall, which holds the highest Hallmark accreditation level (Hallmark 3), with its excellent facilities, including ample parking space.

The standard hire charge for the main hall and kitchen are:

ANY DAY OF THE WEEK ANY TIME £15 PER HOUR

No winter supplements. No extra charges.

Ideal for family parties and get togethers.

The use of a separate Committee Room is also available.

For all bookings or enquiries please contact:

**The Duty Manager on 07514 758936**

## Rhodes Minnis Village Hall

Charity No.800345

Rhodes Minnis Village Hall is located 2kms (1¼miles) from Lyminge and just off Longage Hill and Whitehorse Lane in Chapel Lane.

The hall, which holds Hallmark accreditation, is ideal for children's parties, band practice, quizzes, meetings, wedding receptions, fundraising events and much more. It has a fully equipped kitchen.

**Rates**

Mon to Fri £18 per session £48 all day

Sat & Sun £23 per session

£33 for evening session and £69 all day

**Sessions**

AM session 08.30 - 12.30

PM session 13.30 - 17.30

Evening session 18.00 - 23.45

Separate rates for Bank Holidays and New Year and special rates for regular users.

For all bookings and enquiries please contact:

**Mick & Dorothy Athow: 01303 862616**

**e-mail: [booking-rmvh@outlook.com](mailto:booking-rmvh@outlook.com)**

## VALLEY METHODIST CHURCH, LYMINGE AND TAYNE CENTRE HALL HIRE



Church Seating Max 150 £22 per hour

Clayson Hall (with Stage) Seating Max150 £16.50 per hour

Rigden Room Seating Max 35 £11 per hour

Wesley Room Seating Max 15 £11 per hour

All rooms have use of kitchen, toilets and disabled toilet. With the exception of Wesley room, all rooms are disabled-friendly and accessible.

Contact Tel: 07716521405

## Lyminge Library Opening Times

Monday 10am - 2pm  
Tuesday 10am - 1pm, 2pm-5pm  
Wednesday 10am - 2pm  
Thursday 10am - 1pm, 2pm - 5pm  
Friday 10am - 2pm  
Saturday 9am - 1pm

Tel: 03000413131 [lymingelibrary@kent.gov.uk](mailto:lymingelibrary@kent.gov.uk)

**The Lyminge Newsletter**  
can be viewed online at  
[www.lyminge.org.uk/newsletter/](http://www.lyminge.org.uk/newsletter/)

## The Lyminge Association

*We're here to support and develop our community!!*

**Contacts:**

**Chair:** Peter Barnes 01303 863737 or  
07808775302 [pbarnes20@icloud.com](mailto:pbarnes20@icloud.com)

**Treasurer:** Janet Fry 01303 863177  
[janet@rhodesminnis.org.uk](mailto:janet@rhodesminnis.org.uk)

**Minutes Sec:** Heather Dunford

**Committee Members:**

Marian Chubb, Richard Chubb, Stephen Guyatt, Gillian Heywood, Robin Mackonochie,  
Derek Smith, Penny Stephens, Adrian Willcox (deputy chair), Bernie Wood, Martin Wood

**Newsletter:** As for Peter Barnes above.

**Please contact the Chair or Treasurer if you need any financial support for your charity.**

Editor: [pbarnes20@icloud.com](mailto:pbarnes20@icloud.com)





## Lyminge Baby & Toddler Group

We are excited to welcome you to our local parent, baby and toddler group.

Please come along, meet new mums and dads for a chat and a play.

It costs £3.50 with tea and coffee provided along with snacks for your child.

Tuesdays, term times only. 10am to 12noon at the Tayne Centre.

First session is free.

Follow us on Facebook and Instagram.

Contact Ellen at 07870405567.

## Etchinghill Baby & Toddler GROUP

10.15–11.30am every Wednesday  
at Etchinghill Village Hall  
£2.50 per child

Come along to Etchinghill's Parent and Toddler group welcoming all pre-school children. We have plenty of toys and snacks for the little ones, and there is always tea, coffee and cakes for the adults. For further information call Ruth on 07817777975, look at Parent and Child Etchinghill Facebook page or email us as [parentandchildetchinghill@gmail.com](mailto:parentandchildetchinghill@gmail.com).



# PRE-SCHOOL OPPORTUNITIES

Early Years Education & Day  
Care for Children Aged 2-5



## LYMINGE Pre-school

Every Day Adventures  
at our **OUTSTANDING** pre-school

**COUNTRYSIDE SETTING**  
**FANTASTIC FACILITIES & GARDENS**  
**QUALIFIED & LONGSTANDING TEAM**  
**WRAP AROUND CARE 8AM-5PM DAILY**  
**HOLIDAY CLUB OUTSIDE OF TERM TIME**  
**AFTER-SCHOOL CLUB**  
**PARENT PORTAL**



Rated **OUTSTANDING**  
by OFSTED 2022

We'd love to hear from you:

☎ 01303 863149

✉ [LYMINGEPRESCHOOL@GMAIL.COM](mailto:LYMINGEPRESCHOOL@GMAIL.COM)



## NURSERIES AND FOREST SCHOOL

*Bridging the indoor and outdoor learning  
environment for children in their early years*

Badgers Bridge has three sites, set in the idyllic countryside of Postling, Lympe and a Forest School in Lyminge. We are a small and friendly nursery, who blend the Montessori principles with the outdoor learning ethos.

### FIND US AT

- 📍 Postling Village Hall, The Street, Hythe CT21 4EU
- 📍 Lympe Village Hall, Aldington Road, Hythe CT21 4LE
- 📍 Outward Bound at Lympe
- 📍 Forest School in Lyminge

FROM 18 MONTHS TO  
5 YEARS

OPEN MONDAY TO FRIDAY  
8:30AM TO 3PM

GET IN TOUCH TO FIND OUT  
ABOUT AVAILABILITY AND  
MEET OUR LOVELY TEAMS

[badgersbridge@gmail.com](mailto:badgersbridge@gmail.com)

01303 862951





# Spring Rise Dog Food

Healthy and tasty meals for your furry friend!



AVAILABLE IN  
2KG, 6KG & 12KG

GRAIN FREE / SUPERFOOD 65 /  
SUPER PREMIUM / TRAINING TREATS

07582 407637

MAPLE COTTAGE, ETCHINGHILL, CT18 8BZ

FREE DELIVERY EVERY WEDNESDAY AND FRIDAY\*

\*within 15 miles of CT18 8BZ



## Shelly's General Garden Maintenance Service

07738 113386

Lawn mowing

Weeding - patios, paths, drives, beds & borders

Cleaning - greenhouses, conservatories,  
patios, paths

Painting - sheds, outbuildings, fences

Call Shelly on 07738 113386  
for more information

This Newsletter can be viewed online and in colour at  
[www.lyminge.org.uk/newsletter/](http://www.lyminge.org.uk/newsletter/)



Carpentry, Joinery &  
Building Contractors

07828 751 063

shaun@candjworksltd.com

www.candjworksltd.com

Find us on 



Over 30 years of experience in the industry. Locally based.

Doors  
Bathrooms  
Bespoke joinery

Stairs  
Kitchens  
Living spaces

Roofing  
Extensions  
Loft conversions

Contact us now for a free quote: 07828751063. Visit our website [www.candjworksltd.com](http://www.candjworksltd.com)



## Bus times

To Folkestone town centre via Etchinghill & Cheriton High Street  
From Lyminge, The Sidings

**MONDAYS TO FRIDAYS except Bank Holidays**

There are route 17 buses at 0642, 0748, 0909 (0919 on school days), 0944, 1044, 1144, 1244, 1344, 1444, 1619, 1624 (school days only), 1704, 1804, and 1904.

**SATURDAYS**

There are route 17 buses at 0749, 0844, 0944, 1044, 1144, 1244, 1344, 1444, 1544, 1644, 1744, 1844, and 1929.

On Mondays to Saturdays there are also route 18 buses to Sandling Station & Hythe - for times see our website or call the number below

**SUNDAYS & BANK HOLIDAYS**

There are route 17 buses at 1032, 1302, 1532 and 1802.

To Canterbury city centre via Bham, Barham & Bridge  
From Lyminge, Wesley Terrace

**MONDAYS TO FRIDAYS except Bank Holidays**

There are route 17 buses at 0732, (0752 during school holidays), 0903, 1013, 1043, 1143, 1243, 1343, 1443, 1613, 1733, and 1858.

**SATURDAYS**

There are route 17 buses at 0742, 0842, 0943, 1043, 1143, 1243, 1343, 1443, 1543, 1643, 1743, and 1843.

On Mondays to Saturdays there are also route 18 buses to Canterbury via Stelling Minnis and Bevingham - for times see our website or call the number below.

**SUNDAYS & BANK HOLIDAYS**

There are route 17 buses at 0903, 1133, 1403, and 1633.

These bus times apply from 1 September 2024.



0345 241 8000 @StagecoachSE  
customerhelpSE@stagecoachbus.com  
stagecoachbus.com



South Kent SEN Tuition

1:1 and small group tuition in your home

Private tuition from highly experienced and skilled teacher

Supporting children whose parents may have decided that they should be educated other than at school  
Electively Home Educated or

'Educated Otherwise than at School' (EOTAS)

Supporting children for whom school can be a stressful and anxiety producing place  
I offer a gentler more bespoke approach.

I also offer booster lessons in reading, phonics and maths

Contact me for a free 30 minute call or virtual meeting to discuss your needs and to see if I can help.

[www.southkentsentuition.co.uk](http://www.southkentsentuition.co.uk)  
[sarah@southkentsentuition.co.uk](mailto:sarah@southkentsentuition.co.uk)  
07751459085

If you wish to advertise in the newsletter, please contact

Peter Barnes [pbarnes20@icloud.com](mailto:pbarnes20@icloud.com)  
01303 863737 or 07808775302

Editor: [pbarnes20@icloud.com](mailto:pbarnes20@icloud.com)



With our excellent local knowledge & experienced staff we will get you moving

✓ Free professional photography, property floorplan, Rightmove premium listing & social media advertising

01303 863393

The Estate Office,  
8 Station Road,  
Lyminge,  
Kent CT18 8HP

Follow us on  
social media



[www.laingbennett.co.uk](http://www.laingbennett.co.uk)



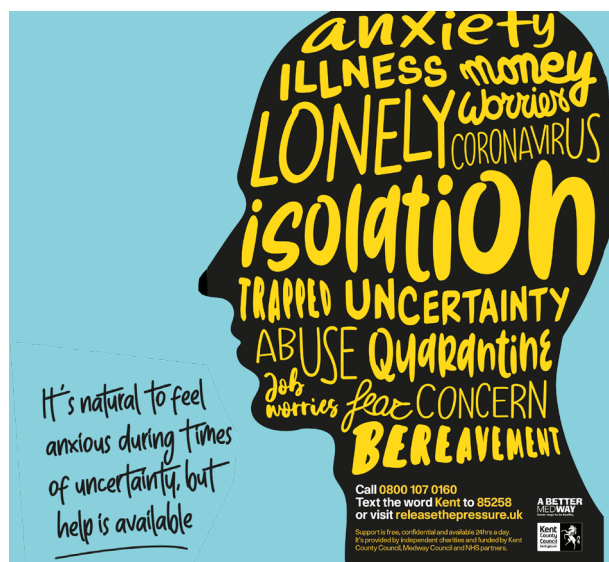
Hythe Aqua Swimming Club has vacancies for potential competitive swimmers Level 7 and above. Join a Club with a nationally accredited swim programme.

Lessons/Coaching sessions are held on Tuesday & Thursday evenings at Hythe Pool.

We also welcome adult length swimmers to our Adult training on Tuesdays & Thursdays at 9.00pm

To book your place

Email: [hytheaqua@btinternet.com](mailto:hytheaqua@btinternet.com) or checkout our website:  
[www.hytheaqua.org.uk](http://www.hytheaqua.org.uk) or F/book





Osteopaths, Adam and Katie, are here to help you minimise your pain, optimise your mobility, and enhance your health and wellbeing.



We believe that everyone deserves to live a life free from the limitations of pain, and we're here to support you on your journey to a healthier, more active lifestyle. Whether you are searching for help managing a chronic condition such as arthritis or circulatory problems, or you have a painful frozen shoulder, back pain, sciatica or recent injury.....we are here to support you.

**Book online via our website or call/email us for more information.**

**AK Healthcare, 4 Station Road, Lyminge, CT18 8HP**

**Tel: 07904311554**

**Email: [info@akhealthcare.org.uk](mailto:info@akhealthcare.org.uk)**

**Website: [www.akhealthcare.org.uk](http://www.akhealthcare.org.uk)**



**ENVISAGE  
GROUNDCARE**

### Domestic & Commercial

- GRASS CUTTING
- HEDGE CUTTING
- CLEARANCE
- TREE WORK
- FENCING

**Tel: 07724 447 368**

**Email:**

**[enquiries@envisagegroundcare.co.uk](mailto:enquiries@envisagegroundcare.co.uk)**

**[www.envisagegroundcare.co.uk](http://www.envisagegroundcare.co.uk)**

## Anna Lindley (RVN, Dip.A.Physio)



**Anna's Animal  
Physiotherapy**

For dogs, cats & small pets



- Offering physiotherapy assessment and treatment of dogs, cats and small animals.
- Physiotherapy can help with osteoarthritis and the ageing pet, post operative orthopaedic surgery, neurological, spinal conditions, unexplained lameness and many more conditions.
- I use a combination of manual therapy, laser, ultrasound therapy, TENS, kinesiology tape and exercises to rehabilitate your pet depending on your their needs. I also address environmental and exercise factors that can help your pet with their condition.
- I am fully insured with over 16 years experience working with animals. I am a member of the International Association of Animal Therapists (IAAT).
- For more information please visit my website: [annasanimalphysio.co.uk](http://annasanimalphysio.co.uk) or feel free to contact me on 07944 606453 or [anna@annasanimalphysio.co.uk](mailto:anna@annasanimalphysio.co.uk)
- Why not follow me on social media:  
Instagram: [@annas\\_animal\\_physiotherapy](https://www.instagram.com/annas_animal_physiotherapy),  
Facebook: [@annasanimalphysiotherapy](https://www.facebook.com/annasanimalphysiotherapy)

## Sarah Holbrook

**PAINTER & DECORATOR**

**Elevate Your Space with 20  
Years of Expertise**

### Services Tailored to your Specification

Internal & External Work

Paper Hanging

Domestic & Commercial Undertaken

Peace of Mind - Fully Insured

Competitive Rates - Top-notch service at affordable prices

Free Quotations: Get a clear understanding of costs with  
no-obligation quotes.

☎ 07891743740 ✉ [sholbrookdecorating@gmail.com](mailto:sholbrookdecorating@gmail.com)

## SCRUBBERS - Est. 1988

**THE HOME AND COMMERCIAL CLEANERS**

One off, regular or moving day 'Blitz'

Oven cleaning - Ironing

Carpet cleaning and more...

For a friendly and reliable service

Free Estimates

**Tel: 01303 249288 or 07834 128671**





**01303 847899**

*Live well, your way  
with care at home*

- ✓ Personal Care
- ✓ Companionship Care
- ✓ Home Help
- ✓ Dementia Care
- ✓ End of life Care
- ✓ Live in Care

CARE professional with client and Grandson

**Home Instead**

Folkestone, Hythe & Ashford

300 Cheriton Road

Folkestone, Kent, CT19 4DP

[accounts.folkestone@fha.homeinstead.co.uk](mailto:accounts.folkestone@fha.homeinstead.co.uk)

[www.homeinstead.co.uk/folkestone](http://www.homeinstead.co.uk/folkestone)

## GARAGE SALE - 14TH SEPTEMBER

**E.F.LETTINGS**  
Residential & Student



### YOUR LOCAL LETTING AGENT

At EFLettings we believe in a personalised service  
We are here for you every step of the way

[www.eflettings.co.uk](http://www.eflettings.co.uk)

Tel: 01227 533550

Editor: [pbarnes20@icloud.com](mailto:pbarnes20@icloud.com)

### Daniel Kirby Roofing & Building



Quality materials and reasonable rates  
Established 1996, based in Hawkinge, Near Folkestone,  
and covering Folkestone and Hythe areas  
Embracing all roofing work from small roof repairs to  
complete re-roofs.

What we do:

- Fibreglass Reinforced Plastic flat roofs
- Felt flat roofs
- New pitched tile and slate roofs and repairs
- Small and large jobs
- Fascias soffits and gutters
- Chimney repairs, rebuilds and removal
- Conservatory conversions
- Advice and free quotes

Visit full website below for more details

[www.roofers-folkestone.co.uk](http://www.roofers-folkestone.co.uk)

**01303 892705    07916273886**

Tel: 01303 863737



# Kent's Leading Mobility Specialists

Over 200 new & used scooters available

**USED SCOOTERS FROM £395**

**BEDS FROM £1395**

**CHAIRS FROM £595**

Huge range of Shoes & slippers for problem feet

**HOME DEMONSTRATION LET US COME TO YOU**

**STAIRLIFTS**

Made in Britain



**FOLKESTONE STORE**

**Tel: 01303 274574**

**[www.safehandsmobility.co.uk](http://www.safehandsmobility.co.uk)**

**[folkestone@shmobility.co.uk](mailto:folkestone@shmobility.co.uk)**

Compass House, 347-349  
Cheriton Road, CT19 4BP

**ALSO AT  
BIRCHINGTON**



**HEAVER  
& LINCH**

Bespoke Handmade Kitchens & Furniture

Bespoke Handmade Cabinet Makers based in Lyminge, covering Kent and the South East.

Over 30 years experience in creating stunning solid wood kitchens and furniture.

Get in touch for any advice, recommendations and a free quote.

**Tel: 07832 360 603 or 07832 363 963**

**Email: [heaverlinch@outlook.com](mailto:heaverlinch@outlook.com)**

**Website: [www.heaverandlinch.co.uk](http://www.heaverandlinch.co.uk)**



Editor: [pbarnes20@icloud.com](mailto:pbarnes20@icloud.com)

25

**Colebrook Sturrock**



**Thinking of  
moving home?**

**SELL OR RENT your home  
this Summer! Contact your  
local, experienced village  
agent for a FREE  
Valuation!**

**01303 892000**

Elham  
01303 840422

Hawkinge  
01303 892000

Saltwood  
01303 260666

Sandwich  
01304 612197

Walmer  
01304 381155



**[colebrooksturrock.com](http://colebrooksturrock.com)**



**Looking to Move?**

**Looking for an Agent that gives Straight Forward Honest  
Advice?**

**Look no Further, Choose Colebrook Sturrock Sales &  
Lettings.**

**Call us Now for Your Free Market Appraisal**

**Covering Hawkinge & Elham plus all surrounding villages 01303 892000**

**Tel: 01303 892000/01303 840422  
[www.colebrooksturrock.com](http://www.colebrooksturrock.com)**

**Email: [hawkinge@colebrooksturrock.com](mailto:hawkinge@colebrooksturrock.com)  
Email: [Elham@colebrooksturrock.com](mailto:Elham@colebrooksturrock.com)**

**Tel: 01303 863737**





**APX PROJECT  
MANAGEMENT**

From design to build, we use trusted quality trade professionals along with reliable suppliers to ensure budgets are met, with high standards maintained. If you're looking to –

- Extend your property
- Carry out an external or internal refurbishment
- Convert an existing building into a new dwelling

Please contact: paul@apxprojectmanagement.co.uk 07487 364155

## Auto Economy Centre

**Fully equipped Mechanical Repair & Service Centre**

**With the latest diagnostic equipment**

**Half price MOTs when booked with any service**

**01303 863656**

**Orchard Garage, Canterbury Rd, Etchinghill**

**www.autoeconomycentre.com**

**Gosbee  
LANDSCAPES**

FENCING | GATES | PAVING | RESIN BONDING

- Over 35 years experience • Jacksons Approved Installer
- Marshalls approved • Check-a-trade registered

Call Martin Gosbee: 07974 835 511 | 01303 863 337

GOSBEECONSTRUCTION@GMAIL.COM  
GOSBEE.CO.UK



## LYMINGE FOOD & WINE

**01303 862225**



Our new opening times are:

Mon – Sat **7:00-20:00**

Sunday & Bank Holidays

**8:00 - 19:00**

**POST  
OFFICE**



We offer National Lottery, ATM terminal,  
Post Office & PayPoint services.

## Park House Sanctuary Boarding Kennels & Cattery

**Park House, Stelling Minnis CT4 6AN**

Brick-Built Heated Kennels. Daily Walks ~ Reasonable Rates

Dogs must be fully inoculated. Heated Cat Chalets

Quiet Area Inspection Invited.

To book or for further information, call 01303 862622

or email lord.whisky@btinternet.com

**www.lordwhisky.co.uk**



**Dennis Huntley  
Chimney Sweep**



Wood burners and multifuel stoves installed

Hearths and fireplaces built & installed

Over 40 years' experience

**01303 862 343 • 07850 784 365**

dennis.huntley@talktalk.net • www.dennishuntley.co.uk



## AIR LINK CARS

(You pack up, we pick up)

Airport, Seaport & Long Distance Travel Specialists.

The Family Run Business where service really counts

Estate cars and People Carriers



Fixed price 24hrs a day. No extras.

Written Confirmation of booking.

For the Easy Airport Link, Think AIR LINK!

**01303 670370 - 07766 824 474**

airlinkcars@yahoo.com

## D.W. Garden and Mini Digger Services

**Mowing, Fencing, Hedge Cutting,**



**Chainsaw Work, Turfing**

**Free Quotes**

**Contact David 07765789721**

**HANDYMAN  
SERVICES  
SJW**

www.Facebook.com/sjwoodhandyman  
www.Instagram.com/sjw.handymanservices  
**07796 384857**

## Trevor Law

**Electrical Installations**



Serving Elham Valley for 30 years

Part P Registered

**07850 970087**

## South East Aerial & Satellite Solutions

**Digital – Freeview – Satellite – Aerials**

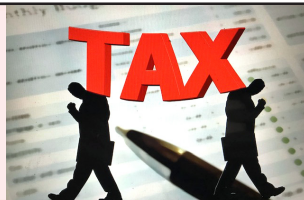
Supply and fit of quality digital installations, FREEVIEW, SKY,  
aerials, poor reception and problem solving, upgrades and  
repairs by fully accredited engineers

Free quotations and advice, fixed prices, fully insured

**Freeview**

**NO CALL-OUT CHARGE  
07825 168010 - 01303 862361**

**freesat**



Based in Etchinghill, I provide a personalised service with a one-off,  
flat fee of £180 to prepare & submit your Tax Return. No hidden costs.

FMAAT Licensed Accountant, fully insured and HMRC-authorized.

**Contact Anita:**

**07361 238744 or aabookkeepingsservicesaadams@gmail.com**

## Richard's Barbershop

4 Station Road, Lyminge CT18 8HP

Open: Tuesday 8am - 2pm  
 Wednesday 2pm - 6pm Times may vary....  
 Thursday 8am - 2pm  
 Friday 2pm - 6pm ....and vinyl records for sale  
 Saturday 8am - 2pm  
 Walk in or call Richard for appointment on 07522 494969



## DILTON MINI SKIP HIRE

Ballast, Hardcore, Sand  
 and Topsoil Supplied  
 REGISTERED WASTE CARRIER  
 01303 812448 or 07799 433754

## Red Dragon I.T. Ltd.



- Windows, Mac & Linux Systems
- PC Health Checks
- Wired & Wireless Networks
- Website Design
- Graphic Design

T: 01303 723456 | E: info@rdit.co.uk | www.rdit.co.uk  
 The Old Granary, Hanover Mill, Church Rd, Mersham, TN25 6NU



Hawkinge

## Veterinary Surgery

Independently owned veterinary surgery for all types of small animals.  
 Opening hours: Monday to Friday 08:00-19:00 Saturday 08:30-13:00  
 24hour emergency service

TEL: 01303 764190

Hawkinge Veterinary Surgery, 9b Defiant Close, Hawkinge CT18 7SU  
 www.hawkingevetsurgery.co.uk



**ROBERT KENT** Cert. fp  
 FUNERAL DIRECTOR

Direct  
 Cremation

£999

Fair Priced  
 Cremation

£1950

ONE FIXED PRICE INCLUDING  
 ALL CREMATION FEES

01303 684062

RKFUNERALS.COM

## Computer support & repairs by local people

Customer service is our priority

- \*Remote IT support for business or home
- \*New & refurbished sales
- \*Call-outs for business or domestic users
- \*Preventative maintenance & upgrades
- \*Repairs to most phones, tablets & devices

enquiries@thecomputerpeopleltd.co.uk



Church Approach,  
 New Romney,  
 TN28 8AS  
 01797 363385

## Andy Mannering Flooring

SPECIALISING IN AMTICO AND KARNDIAN LUXURY VINYL TILES

- Also safety flooring, rubber flooring, etc.
- Commercial and domestic work undertaken
- No job too small. Free estimates & advice given
- Over 35 years experience & fully insured

T: 0797 434 7248 or 01303 863095

E: info@andymanneringflooring.com

Please visit my website for further information and feedback

www.andymanneringflooring.com



## Elham Valley Electrics Ltd.

Local, Low cost, Low carbon

## Domestic Electrician

All electrical needs & EV chargers. Free estimates.

Insured and certified by NAPIT

Call James: 07563 008202

contact@elhamvalleyelectrics.co.uk

or www.elhamvalleyelectrics.co.uk

## Rhodes Minnis Cat Sanctuary

REHOMING & BOARDING CATTERY

- Our Sanctuary takes in and rehomes 250 unwanted cats and kittens each year. A variety of cats are always available to suitable homes.
- 5\* Boarding Cattery under 2018 regulations
- We are open to visitors every day from 10am-1pm & 2-4pm. No appointment needed.

T: 01303 862 243 E: rminniscats@gmail.com

@rhodesminniscats www.rhodesminniscatsanctuary.com

Seathwaite, Green Lane, Rhodes Minnis, Kent. CT4 6XU

Reg. Charity No. 262245



**Fox & Oak**  
 — TREE & GARDEN SERVICES —

Tree Work - Hedge Cutting

Lawn Mowing - Pruning

Garden Maintenance

Garden Waste Clearance...

... and so much more!

Thoughtful garden care,  
 local to you.

hello@foxandoak.co.uk

www.foxandoak.co.uk

(07793) 061380

**HURST**  
 INTERIORS

## Bespoke Joinery

Doors - Windows - Built-in Furniture

Sliding Sash and Casement Windows

Bespoke Front Door made to match original

Made to Measure Wardrobes and Understairs Storage

All work is completely bespoke

Please get in touch for free advice and quotation

Workshop based in Mersham and covers the Kent area

07732 603 415

max@hurstinteriors.com

hurstinteriors

## Tressenden Designs

A seamstress and costume maker with 8 years of experience.

- ♦ Clothing alterations ♦ Repair work undertaken ♦ Made-to-measure; create a bespoke piece for those special occasions
- ♦ Modern and vintage designs ♦ Costumes, ball gowns and wedding dresses

For more information or a quote please contact Amy on: Mobile: 07853 202304 Email: amy.louise.ford@hotmail.co.uk







**T.M. GRIGGS**

01303 489795 07854 098395  
tobystreesurgery@gmail.com



**Garden Clearance - Turfing - Hedge Cutting  
Tree Work - Stump Grinding - Fence Repair**

## FRESHLOOK GARDENS

Regular lawn mowing service. Garden design. Hard and soft landscaping. General garden work, fencing and decking. Turfing hedge cutting, small and medium tree work. Water features, ponds and patios.

For free quotation ring **Danny Scott**  
**01303 242140** or **07795510093**  
mrdanscott89@gmail.com

Established since 1990. Fully insured.

## Computer Repairs

01303 241325  
07968 129902

PCs, MACs, Laptops, Tablets & printers,  
Upgrades & Repairs, Internet & Email, virus removal,  
Office Setup, Backup & Recovery & much more ...  
Tuition available by a qualified tutor.

Usual Fee **£55**

Web sites built & hosted from £10 per month

See [www.computers-in-lyminge.co.uk](http://www.computers-in-lyminge.co.uk) for details



**DYNO-ROD**



We've been  
unblocking  
sinks, drains  
& toilets  
in Kent  
since 1965

- Quick Response
- CCTV Drain Inspections
- Drainage Repairs
- Pre-purchase Surveys

For a FREE no obligation quote  
contact Mark or Peter on:

**01233 621108**  
**07557 616630**

## THE HANDY FELLOW



**A TRUSTED LOCAL SERVICE**  
**CALL 07534485049**

**ONE.HANDY.FELLOW@GMAIL.COM**



General Landscaping Including  
Fencing • Turfing • Paving

**Gavin Allfree**

T 07495 299711 E [gavinallfree@gmail.com](mailto:gavinallfree@gmail.com)

## C. Brewer

**Painting and Decorating**

**Interior and Exterior Painting**

15 years of experience ~ a keen eye for detail

Clean and tidy worker

Good rates and senior citizens discount of 10% off labour

**07510 631497**

Local Tradesman

## J Tappenden

Established over 40 years ago



Painter/Decorator

**01303 862467**

**077755 78008**

**The Newsletter can be viewed  
online at  
[www.lyminge.org.uk/newsletter/](http://www.lyminge.org.uk/newsletter/)**



**DAVID HAIME**

**ARCHITECTURAL TECHNOLOGIST**

BUILDING TECHNICAL DESIGN  
AND CONSTRUCTION DRAWING  
SERVICES.  
PROJECT MANAGEMENT

BUILDING PLANS FROM PORCH TO NEW BUILD.  
PLANNING/BUILDING CONTROL/STRUCTURAL CALCS.  
COVERING KENT/SUSSEX/SURREY.

LYMINGE, KENT CT18 8HA  
TEL: +44 7974 156510  
EMAIL: [D.HAIME@BTINTERNET.COM](mailto:D.HAIME@BTINTERNET.COM)

## Jackson Plumbing Property Maintenance

Complete bathrooms and tiling  
No job too small. Special rates for OAP's.

Telephone: home/evening **01303 270691**  
or daytime **07773 089398** or **07864 929826**

## Hamilton Windows & Doors

**New joinery, restoration, double glazing of old and  
existing timber windows**

Bring your windows and doors back to life and get rid of cold  
draughts, or replace them with beautiful new ones.

Joiner/carpenter with many years of experience.

Based in Lyminge, please feel free to call for more information.

**07792901266** [Alex\\_b\\_hamilton@live.co.uk](mailto:Alex_b_hamilton@live.co.uk)



**JBS  
BUILDERS**

Specialising in Brickwork, Fencing, Landscape Gardening. Tree work undertaken (lopping, felling and clearing).

General household repairs, painting, plastering, power jetting & cleaning.

No job too small!!! All work guaranteed and insured.

**For free advice and quotations please call: 07825 168010/ 01303862361** (anytime)



## Financial Planning

**David Gridley - Chartered Financial Planner**

Range of quality advice from a fully qualified adviser:

- Pre- and Post-Retirement Planning
- Investment Planning
- Inheritance Tax Planning

For further information, please contact our Lyminge office

David Gridley FPFS

Tel: 01303 863959 Email: davidgridley@sjpp.co.uk

## Ashman Consulting Ltd



**Straightforward I.T.**

**Advice  
Training  
Solutions  
Support**

**Steve Ashman  
07702641981**

**info@ashman-consulting.co.uk**

**MWH**

*window and gutter cleaning service*

**Mark Haley**

Lyminge and surrounding areas

For a free no obligation quote, please contact me

**Mobile: 07738 479202**

**Home: 01303 863 702 Email: haleymark161@gmail.com**

Find us also on Facebook



## T. Metcalfe Fencing Contractors

Approved Expert Installer for Jacksons Fencing  
Established over 30 years  
Fully insured - Highly experienced teams



Panel fencing, gates, decking, pergolas, post & rail,  
stock fencing, security, landscaping & tree surgery.

**01303 840201**

metcalfefencing@btinternet.com

Proprietor - Derek Burr,  
Ash Ridge House, Elham



## Fincham Plumbing & Heating

We specialise in bathroom remodelling, including all tiling & pipework

Natural gas boiler servicing, Installation, Maintenance, Repairs, Replacement

All your plumbing requirements

Martin is a Qualified Plumber & Gas Engineer with over 30 years experience

Gas Safe, CIPHE, WIAPS registered

**Rosemary & Martin Fincham**

**07835 851 706 martinfincham@sky.com**



**Lou Lloyd  
CARPENTER**

**Lou Lloyd  
CARPENTER**

**loulloyd@rocketmail.com**

**07984 426214**

Kitchens, Flooring, Wardrobes,  
Doors, Decking and more!

## HAND MADE CURTAINS, ROMAN BLINDS & SOFT FURNISHING, CURTAIN ALTERATIONS

**TEL: VALERY WREN**

**01303 237755**



**D & S DOUBLE GLAZING SERVICES**

01303 863689 - 07912317915

We are a local company that specialise in double glazing repairs offering a wide range of service's that include: Replacement double glazed units - Locks - Hinges - Handles - Rubber Seals - Gaskets.

For a free estimate please call: **07912317915 or 01303 863689**  
or email: **dsdoubleglazingservices@gmail.com**



**CEDAR TREE CARE** City & Guilds NPTC  
All types of tree work undertaken

Crown lifting, crown reductions,  
dismantling and removals, hedge maintenance,  
pollarding, stump grinding and removal, mobile saw milling,  
wood land maintenance, all year round seasoned logs available  
Fully insured and NPTC qualified with over 15 years experience  
**Call Tom: 07769 908027 email: lynchlogs@gmail.com**

## VALLEY TREE CARE

Your local tree surgeon based in Lyminge with over 15 years of experience. Please call for a free quotation and advice on any of the following:

Tree Removals, Crown Reductions, Pollarding, Crown Thinning, Crown Raising, Dead Wood Pruning. Hedge Removal, Hedge Reductions, Hedge Cutting and Garden Clearance (green waste only). Please call **Sam** for a Free Quote **07963 203564**

## B.M. Plumbing & Maintenance Services

**Local Lyminge Tradesman**

Plumbing and heating works. Complete bathroom install including tiling. General building maintenance undertaken. No job too big. No job too small.

Cheaper rates for senior citizens

**07890854128 Benmillsplumbing@hotmail.co.uk**



**Acrise Electrical Services Limited**

**Design - Install - Maintain**

Tel: 01303 656007 Mob: 07803 421240 Email: info@acrise-electrical.co.uk

Website: acrise-electrical.co.uk

Domestic, commercial, industrial & agricultural electricians serving the Elham Valley and surroundings.



## D.M.B. Plastering

All aspects undertaken  
Interior. Exterior. Plastering. Rendering.  
Coving. Ceilings. Wall. Floors  
Finest quality assured. CSCS Certified.  
30 years experience.

Free estimates. Reliable service. Fully insured.  
Call **David** on **07818 607209**



## Sunhouse Electrical

Your local reliable Electrician  
Part P Registered & Elecsa Approved  
On Electrical Safety Register & Fully Insured  
For a free quotation call James on  
**01303 766333**

[www.sunhouse-electrical.com](http://www.sunhouse-electrical.com)

## KJB GARDEN SERVICES

Weeding, Pruning, Mowing, Hedge  
Cutting & General Maintenance  
**01303 862181 or 07704 989 402**  
**Over 35 years experience**

House Clearance covering South East Kent.....and beyond!  
**CAROL CREES CLEARANCES**



- Est. over 30 years  
Full/part house clearance  
Fair prices paid  
Antique/Vintage/Retro/Modern  
Registered rubbish carrier

Contact **Simon Cullen** on **07745 421680** or [sijnzo@aol.com](mailto:sijnzo@aol.com)

Total garden care for all your needs

## TIM MILLETT

Grass Maintenance, General Gardening, Small & Medium  
Size Tree Work, Stump Grinding and Wood chipping  
Fencing Repairs & New Installations  
Turfing, Hard & Soft Landscaping  
Free Estimates - Fully Insured

**07752 880583**

Email: [info@tmhorticulture.co.uk](mailto:info@tmhorticulture.co.uk)

## N.P.C.

### Domestic Appliance Services

Service and repair of washing machines, tumble driers,  
dishwashers, cleaners and small electrical work.  
For a prompt and friendly service

Call Neil Collard 01303 892234 or 07798716044  
or Google me on Yell.com

## Ewin Electrical

Contact Simon for any electrical maintenance, refurbishments or  
upgrades with a friendly, clean and professional approach to work  
**07891103065**

[info@ewinselectrical.co.uk](mailto:info@ewinselectrical.co.uk) [www.ewinselectrical.co.uk](http://www.ewinselectrical.co.uk)



## SNIPPERS & CLIPPERS

UNISEX HAIR SALON



APPOINTMENT NOT ALWAYS NEEDED



WEDDINGS & SPECIAL OCCASIONS



SHELLAC NAILS



GENTS WELCOME



FREE WIFI



4 Station Road, Lyminge  
Folkestone  
Kent, CT18 8HP



**01303 647 222**



[info@snippersandclippers.co.uk](mailto:info@snippersandclippers.co.uk)



Find us on  
Google+

Find us on:  
facebook



## East Kent Foot Care

[www.eastkentfootcare.co.uk](http://www.eastkentfootcare.co.uk)



## 07745 532075 Podiatry, Chiropody, Foot Health

Treating and managing foot  
and nail conditions, corns,  
callus, insoles, ingrown nails,  
diabetic foot care



## hughes electrical

## Your Local Electrician For all your electrical needs

- 18th Edition/Part P Registered
  - Insured & all work guaranteed
  - All electrical work carried out including EV charging points
  - Covering Lyminge, Etchinghill & surrounding villages
- Call for a free, no obligation quote and to discuss your  
electrical requirements.

Proud members of  
**Checkatrade.com**  
Where reputation matters



**07878 457018**

**01303 814372**

[info@hughes-electrical.co.uk](mailto:info@hughes-electrical.co.uk) [www.hughes-electrical.co.uk](http://www.hughes-electrical.co.uk)

## JON DAUGHTERS - Local Builder

All aspects of general building works undertaken including: roofing, kitchens, bathrooms and small extensions  
**Trading for over 30 years Free quotes, no obligations, fully insured**

**Telephone: 01303 863371 Email: daughters777@hotmail.co.uk**





# Lyminge Midsummer Festival

## The Garden Safari

The **Garden Safari**, part of the Lyminge Festival, proved to be a winner yet again despite the high temperatures. It provided many opportunities to visit a wide variety of gardens, allotments and bowling green.



The creativity of many of the gardens reflected just how versatile Mother Nature can be, especially when challenged by a small space. The owners proved that you could provide a peaceful oasis with little space.

The chair and vice chair of Lyminge Parish Council (Shaun Pottage and Sue Baldwin) used opportunity to visit a number of gardens in the parish, as well as the farmers market in the village hall. The photo (bottom left) shows them looking across the valley from Nash Hill.



The Lyminge Association would like to express their immense thanks to those who worked tirelessly to bring joy to the many visitors who were able to visit their gardens.





## LYMINGE THEN AND NOW

Our monthly look at how Lyminge has changed over the years, with thanks to Lyminge Historical Society.



The new Lyminge Primary School was opened in the summer of 1987. The photo on the left was taken by the Folkestone Herald at the start of the first term and shows the new building on its site in the corner of Tayne Field, where it still stands. Though very obviously, the current tree cover vastly changes the view today.

The school relocated from its original site by the parish church, now occupied by Church Court and the church car park. A school is first recorded at Lyminge in the 1790s, and we know it was on the Church Court site by early in the 19th Century if not before. But this small space became much too cramped as the local school population grew, so a new site was needed. This was found on Tayne Field, that had previously been acquired by Lyminge Parish Council as an open space for the amenity of the village.

The school was built with six classrooms, reflecting the size of the school roll at that time. However within a short time, it was clear that a seventh classroom would make it easier to provide a reception class at age 5. The School Governors employed government capital funding over a number of years to finance the building of the extension that now houses the reception class and staffroom. Strangely, this was an innovative approach at the time, and it was pioneered here at Lyminge to complete the excellent range of school buildings we still have today.

Lyminge Historical Society is always keen to build on its records of the parish, and we are looking for your help. If you can identify any of the children (or the teacher) in the photo, please contact us at:

[lyminge.history@outlook.com](mailto:lyminge.history@outlook.com).

## Etchinghill Pétanque

Residents and friends gathered for the annual doubles competition at Etchinghill Village Hall.

Several very close matches couldn't stop Graham Barber and Ann Baker becoming the 2025 Doubles champions.



## Lyminge Friends

"Lyminge Friends enjoyed an interesting and entertaining talk from Peter Stratton of The Fifth Trust, a local charity supported by our members with a £100 donation, followed by a buffet lunch at The Vineyard."