

# THE LYMINGE NEWSLETTER

For the communities of LYMINGE, ETCHINGHILL, RHODES MINNIS and POSTLING

Produced by  
THE LYMINGE ASSOCIATION  
[www.lyminge.org.uk](http://www.lyminge.org.uk)

**June 2024**  
**From The Lyminge Association**

## **The Rudes will soon be here!**

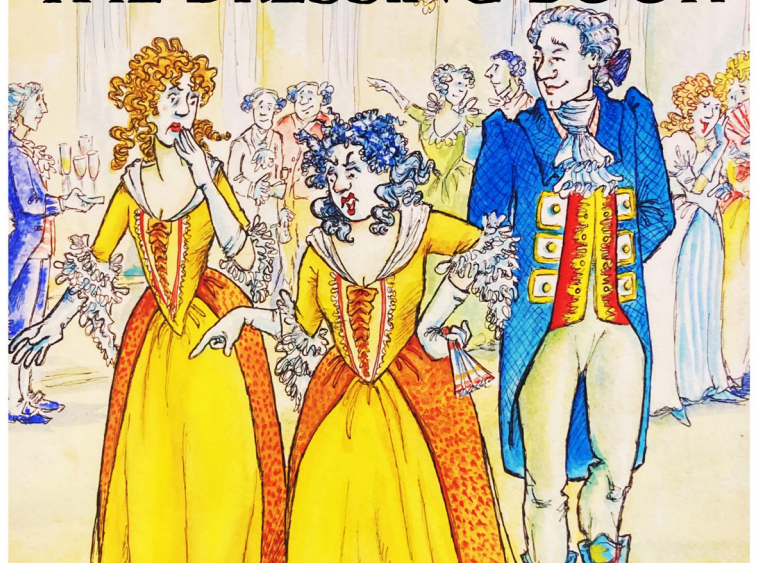
**The Rude Mechanicals** are coming very soon! Don't miss them! They'll be on **Tayne Field** on **Saturday 22nd June at 7.30pm**. Come with your own low-backed chairs from 6pm for picnics.

It is called '**The Dressing Book**'. It is both an hilarious comedy – when two ladies turn up to a ball in identical dresses a fracas follows! – but equally poetic and tender. It is set in 1795 in Tunbridge Wells but plays games with time and social status and has a twist in the tail.

It follows the 'social round' of Maybelline who records which dresses she wears for each event in her 'dressing book' – and the men she encounters while wearing them. The play opens a window on the way clothes were – and still are – a means by which men could control the separated public and private worlds of women. Has anything changed? Through a process of 'magic realism' the action changes to the 1960's and Maybelline's clothes, which had been her prison, now set her free.


**TICKETS** – are available now on the company's website – [www.therudes.co.uk](http://www.therudes.co.uk). Or ring 01323-501260. Get it in your diaries now!

The Rude Mechanical Theatre Company  
Present  
**THE DRESSING BOOK**



Tayne Field, Church Road, Lyminge,  
Kent, CT18 8JA  
Saturday 22nd June - 7:30pm

'SUPERBLY DONE' - THE STAGE 'A DELIGHT' - INDEPENDENT ON SUNDAY'  
'SUCH A GOOD NIGHT!' - THE TIMES  
National Press On The Rudes  
[www.therudes.co.uk](http://www.therudes.co.uk)



**THE LYMINGE ASSOCIATION**



**SOMETHING FOR THE WHOLE  
COMMUNITY**

**LYMINGE SHOWCASE**

**1ST JUNE 2024**

**LYMINGE VILLAGE HALL**

**12NOON - 4PM**



# Margaret Saunders' Meanderings



A pure blue sky calls so I embark on an early morning walk before breakfast. I take a Vicolo – a small alleyway or passage – off the Via San Paolo and climb the steps, past a corner planted with flowers and herbs. I rub the leaves of the plants to release their scent. The air is fresh but the sun is warm on my back. Bearing right I walk along the Via Capobove. A cat runs down the steps from a front door where a nun is shaking out her front door mat. We greet each other with a nod and a smile, the universal language for those who do not share a spoken one. Above the street are a couple of bridges which join two buildings on opposite sides of the street, one with window boxes and the other resembling the façade of a church. Further along the street, pots of bright flowers hang in holders on the walls of a house, a chair sits outside a front door in a sunny position, a metal grille patterned with a cross and flowers is set into a wooden door, the holes allowing speech to be exchanged before the door is opened to the visitor. More flights of steps lead off to right and left, tempting me to divert from my current route.

Down in the lower half of the city, tucked into a corner along the Via Fontebella is a man with a portable table on which are arranged around thirty

different sized wine glasses, filled with varying amounts of liquid. He proceeds to 'play' these glasses like a musical instrument, rubbing his fingers around the rims to produce notes, the resulting music a delight to the ears, slightly mournful but uplifting at the same time. Shops line the street selling wares that have long been associated with places of pilgrimage – icons, aids to prayer, badges, food and drink. I continue along this steep road up to the Piazza del Comune where I stop for a caffè latte next to the Roman Temple of Minerva, which has been transformed into a church - Chiesa Santa Maria Sopra Minerva.

Punctuating the landscape are Judas trees, their deep purple-pink blossom standing out amongst the bright greens of trees that are bursting into leaf. Myth says that it is named after the disciple who betrayed Jesus. He allegedly hanged himself from this species. However, an alternative origin of the name might be that it is the tree of Judea, where it proliferates in that country's hilly regions.



An evening walk takes us up to the highest point above Assisi where the Rocca Maggiore sits – the magnificent remains of a 14th century castle, built on the site of an earlier castle dating to the 12th century. It is already dark so we need our torches to light the way, firstly up one of the flights of steps, along the Via Croce then through a narrow gateway onto an equally narrow stony track which runs between a dry stone wall and a wire fence, the latter protecting us from falling down the steep slope to our right. We are above

the city and can look down between the trees, to the streets below, the many churches and piazzas now lit up. Eventually we reach the top and marvel at the amazing view over the valley, illuminated by myriads of small lights as far as the eye can see. No moon is visible: it is the night of the eclipse so the moon is busy elsewhere in the world! Looking out across the valley, I wonder at the many lights that stretch towards a distant horizon as during the daytime, it looks to be a relatively rural landscape. On a previous visit here, young people were dancing in front of the floodlights, throwing up giant shadows against the castle walls, much to the amusement of those watching.



Having made arrangements to meet up with the rest of the group at a café in the Piazza del Comune, we make our way back by a different route, entering the other end of the city via narrow medieval streets, enchantingly lit, almost expecting a merchant to appear from around a corner. A piper plays a high lilting tune evoking the Pied Piper of Hamelin. Drumming and music start to fill the air, and as we reach the Piazza, a huge gathering of over a hundred young people are dancing joyfully, in circles and individually, with linked arms swinging each other around. The cafés are full to capacity providing seating for a delighted audience, who begin to clap and cheer in time to the rhythm. We stop and join our friends, enjoying the spectacle, the warmth of the late evening and the company of so many happy people.

Tomorrow we enter the busyness of the airport and the journey home and this peaceful interlude in life that Assisi has given us will be over. However, the memories will remain.



# Diary of Forthcoming Events

This page is printed to give readers and organisers the opportunity of planning events without clashing with existing ones, which are already in the 'diary'. It is not intended as a means of advertising and we take no responsibility for errors or omissions. Acceptance is at the discretion of the editor. Please send your updates by email to [pbarnes20@icloud.com](mailto:pbarnes20@icloud.com) or via methods outlined on Page 4.

Location and name codes below:

## One-Off Events

Date	Time	Event	Where	Tel. No.	Date	Time	Event	Where	Tel. No.
01-Jun	10.30am	Lyminge Showcase. See P9	LVH	862699	13-Jul	10am	Coffee and Cake Morning	PC	
01-Jun	12noon	Open Gardens, Postling	CT21 4ET		13-Jul	3pm	Haywardians Concert	LMC	863049
04-Jun	10am	Digital Support	AUKL	269602	19-Jul	7.30pm	Undecided Charity Concert	LVH	
08-Jun	10am	Coffee and Cake Morning	PC		10-Aug	10am	Coffee and Cake Morning	PC	
09-Jun	11am	Elham Food & Craft Festival	Square, Elham		14-Sep	10am	Coffee and Cake Morning	PC	
13-Jun	12.30pm	Dementia Café	AUKL	269602	12-Oct	10am	Coffee and Cake Morning	PC	
14/15 June	7.30pm	'We'll Meet Again' & Elham Valley Story	EVL		12-Oct	7pm	Autumn Quiz	EVH	07544 670363
22-Jun	7.30pm	The Rudes 'The Dressing Book'	TF	01323501260	02-Nov	11am	Coffee Concert	LMC	
23-Jun	10am	Teddy Bear Jump & BBQ	LPC		09-Nov	10am	Coffee and Cake Morning	PC	
23-Jun	9.30am	Farmers' Market	LVH		01-Dec	4.45pm	Christmas Lights Switch On	EVH	07544 670363
06-Jul	11am	Lyminge Primary School Fayre	TF		08-Dec	6.30pm	ERA AGM	EVH	07544 670363
06-Jul	4pm	Cantores - Summer Concert	LVH		14-Dec	4pm	Cantores - Christmas Concert	LVH	

## Weekly Events

Day	Time	Event	Where	Tel. No.	Day	Time	Event	Where	Tel. No.
Mon	9.30am	Dementia & Me Unit	AUKL	269602	Wed	10am	Baby/Toddler Group	EVH	07817777975
Mon	10am	Bridge Club	LBC	863177	Wed	11am	Singing For All (term time only)	AUKL	269602
Mon	10.30am	Lyminge Larks (Singing)	LMC	07951572920	Wed	2pm	French Conversation (fortnightly)	Call	862972
Mon	10.30am	Chromatic Greys Art Class	EVH	07783575802	Wed	7pm	Tayne Centre Circuits	TC	07925982995
Mon	1pm	Lyminge Knitters	AUKL	269602	Wed	7.30pm	Cantores Dominicae Choir	LVH	07778 333339
Mon	5.15pm	Pilates	EVH	07951608008	Thurs	10am	Boxfit (non-contact)	AUKL	269602
Mon	6.30pm	Ballroom/Latin/Salsa Dancing	TC	07966751991	Thurs	10am	Lyminge Morning Art Group	EVH	01303211364
Mon	6.30pm	Judo Club	LVH	07369225021	Thurs	10.15am	Baby Rhyme Time	LL	03000413131
Mon	6.15pm	Pilates	EVH	07951608008	Thurs	11.45am	Streetz to Streetz (fish and chips)	AUKL	07955926835
Mon	7pm	Yoga	RMV	07977503897	Thurs	2pm	Lyminge Afternoon Art Group	TC	07870494644
Tues	9am	Seated Yoga	AUKL	269602	Thurs	5pm	Pilates	TC	07951608008
Tues	9.30am	Tai Chi Qi Gong	EVH	07402203239	Thurs	6.15pm	Pilates	TC	07951608008
Tues	10am	Lyminge Baby & Toddler Group	TC	07870405567	Thurs	7pm	Short Mat Bowls	LVH	863842
Tues	10am	Painting and Drawing	AUKL	269602	Thurs	7.30pm	Ballroom and Latin Dancing	EVH	07967979610
Tues	10am	Dementia Day Break	AUKL	269602	Fri	8am	Chiropody (appointment only)	AUKL	269602
Tues	11.45am	Pilates	EVH	07834839801	Fri	9am	Pilates with Katherine	AUKL	269602
Tues	1.45pm	Pickleball	EVH	863819	Fri	9.30am	Dementia & Me Unit	AUKL	269602
Tues	6pm	Board Games Night	Coffee Cabin		Fri	9.15am	Nikki Barratt Art Group	EVH	07870494644
Tues	6.45pm	Short Mat Bowls	LVH	863842	Fri	10.15am	Talk Time	LL	03000413131
Tues	7pm	Bridge Club	EVH	07790160476	Fri	10.30am	Main Cog Stim Therapy (MCST)	AUKL	269602
Wed	8am	Pilates	TC	07951698008	Fri	6pm	Junior Cricket Training Sessions	SPCC	07869283195
Wed	9am	All Day Breakfast	AUKL	269602	Fri	7pm	Table Tennis	EVH	
Wed	10am	Pilates	TC	07825109670					

## Monthly Events

When	Time	Event	Where	Tel. No.	When	Time	Event	Where	Tel. No.
1st Mon	2pm	RBL, Elham Valley Branch	Methodist Church, Elham	862508	Last Tues	10.30am	Lyminge Poetry Group	LL	03000413131
1st Monday	10am	Stroke Support Group	C&H	07903150099	1st Wed	10.30am	Lyminge Friends	TC	862598
2nd Monday	7.00pm	Parish Council Meeting	TC	07544670363	1st Wed	2pm	Bingo	EVH	
3rd Mon	7pm	Etchinghill Cinema Club	EVH	07903150099	4th Wed	2.30pm	RM Circle	RVH	862913
3rd Monday	10am	Stroke Support Group	C&H	07715221705	Last Wed	7.30pm	Quiz Night	C&H	01303901011
1st Tues	2pm	Library Reading Group	LL	03000413131	2nd Sat	10am	Postling Ch. Coffee Morning	PC	863536
1st Tues <sup>3</sup>	7.30pm	LHS Talk/Event	TC	863879	2nd Sat	10am	Ethelburga Quilters	EVH	
2nd Tues	2pm	Library Reading Group	LL	03000413131	4th Sun	9.30am	Farmers' Market	LVH	
3rd Tues <sup>2</sup>	7.30pm	Gardeners' Society	TC	07703149008	3 monthly Sunday	10am	Blue Kangaroo Baby Class	EVH	07800 737936

<sup>1</sup> In term time only <sup>2</sup> Except Jan and Feb <sup>3</sup> Except Jan, Feb, and trip in Aug <sup>4</sup> Except Aug and Dec <sup>5</sup> Not held in August \*\* Every three months

**AUKL:** Age UK Lyminge; **C&H:** Coach & Horses; **EVH:** Etchinghill Village Hall; **ELVH:** Elham Village Hall; **ERA:** Etchinghill Residents' Association; **ES:** Elham Square; **EVL:** Elham Valley Line Trust; **JF:** Jubilee Field; **KH:** Korf House; **LB:** Laing Bennett; **LBC:** Bowls Club; **LL:** Library; **LMC:** Lyminge Methodist Church; **LPC:** Lyminge Parish Church; **LPS:** Lyminge Primary School; **LVH:** Lyminge Village Hall; **LW:** Lord Whisky; **NP:** Nailbourne Court; **PC:** Postling Church; **PH:** Lord Whisky, Park House; **PVH:** Postling Village Hall; **RVH:** Rhodes Minnis Village Hall; **RMC:** Rhodes Minnis Church; **RMCS:** Rhodes Minnis Cat Sanctuary; **RR:** Rigden Room; **SMVH:** Stelling Minnis Village Hall; **SNL:** See Newsletter for info; **SP:** Sibton Park; **SPCC:** Sibton Park Cricket Club; **TC:** Tayne Centre; **TF:** Tayne Field; **WF:** Well Field





## St Mary and St Ethelburga Parish Church, Lyminge

### 2nd June

Lyminge 10am WOW Service  
Paddlesworth 6pm Evensong (BCP)

### 9th June

Lyminge 8am Holy Communion (CW2)  
6pm Choral Evensong

### Thursday 6th June

Lyminge 8.45pm. Short Commemoration for D Day  
Anniversary  
9.15pm. Lighting Beacon on Church  
Tower for national Commemoration

**Monday 10th June 7pm**  
**Induction of Rev Carol Bates as**  
**new Rector of**  
**Elham Valley Benefice**



### 16th June

Lyminge 10am Holy Communion (CW1) First  
service by new Rector at Lyminge  
Paddlesworth 6pm Evensong (BCP)

### 23rd June

Paddlesworth 8am Holy Communion  
Lyminge 10am Family Praise - Followed by  
Teddy Bear jump from Church tower and BBQ

### 30th June

Postling 10am Benefice Eucharist

**If more information is required please contact the Church Wardens,  
Derek Smith 01303 862508 or Mike Chinneck 01303 863911**

## Lyminge Methodist Church

A warm welcome awaits you at the following services to be held  
at **11am**, followed by a time of refreshment and fellowship.

### 2nd June

Rev. Gill Songer (video service)

### 9th June

**10.15am** Elham Valley Service :  
Rev. Gill Songer (incl. Holy Communion)

### 16th June

Local Arrangement

### 23rd June

Mr Hugh Burnham

### 30th June

Mr Stuart French

## Rhodes Minnis Chapel

A warm welcome is extended to anyone who wishes to join us for  
the following services at 9.30am in our small and beautiful Chapel  
and to share fellowship after the services over coffee and biscuits.

### 2nd June

Mr David Songer

### 9th June

No Service at Rhodes Minnis but a Valley  
service at Lyminge at **10.15am**

### 16th June

A local arrangement

### 23rd June

Mr High Burnham

### 30th June

Mr Ralph Bradshaw

## Postling Church Services

### 2nd June

**9.30am** Morning prayer

### 9th June

**8.30am** Breakfast service

### 16th June

No service in Postling

### 23rd June

**6pm** Quiet evening service

### 30th June

Benefice Holy Communion at **10am**

## Lyminge Newsletter

**Terms & Conditions: Copy deadline for next edition - 18 June 2024**

Please email your copy to the editor ([pbarnes20@icloud.com](mailto:pbarnes20@icloud.com)). Your payment must be received before  
your article or advert can appear in the Newsletter. Invoices will be issued and should be paid ASAP  
either by BACs, cheque, credit card or cash (details on invoice). **Business adverts** cost from £9.50 per  
month or £95.00 per year. **Personal and charity adverts and articles** from £3 per month, or £30.00 per  
year. The annual rate offers 12 entries for the price of 10. Please make cheques payable to '**The Lyminge  
Association**'. If you do not have email, a typed paper-copy may be left with the payment at the Library.  
Newsletter is printed by Canterbury Print & Mail.

**Lyminge Association accepts no liability for the accuracy of the advertisements or subsequent actions arising in  
conjunction with advertisers in the newsletter.**

**Further details from Peter Barnes (editor) on 01303 863737 or [pbarnes20@icloud.com](mailto:pbarnes20@icloud.com)**



## District Councillors' Update - June 2024



**Royal Kentish Camino** - I was pleased to attend the launch of "A Walking Route for All" on Saturday 27 April. The path runs from St Martin's in Canterbury via St Mary & St Ethelburga, Lyminge to St Mary & St Eanswythe in Folkestone. Congratulations to the team for producing the leaflet particularly to Rob Baldwin and Rev Deb for this initiative.

**Otterpool Park LLP** is searching for an Independent Chair to lead the board. They are seeking an inspiring, driven individual with excellent leadership skills and experience in the realms of planning, design, finance, legal, business development or the delivery of housing and infrastructure. Further details can be found at [www.folkestone-hythe.gov.uk/jobs](http://www.folkestone-hythe.gov.uk/jobs).

**My Community Voice** is a messaging service that helps Kent and Medway residents, businesses, and community groups to keep in touch with their local policing teams. The service sends updates about your local area directly from the police officers themselves. My Community Voice is more than just a messaging service; it allows you to reply to the alerts we send you, share information and tell us about the issues affecting you. To register go to [www.mycommunityvoicekent.co.uk](http://www.mycommunityvoicekent.co.uk)

**Kent & Medway Police & Crime Commissioner.** As Cllr Carey has mentioned in her report, Matthew Scott was re-elected as the Police & Crime Commissioner. I have served on the Police & Crime Panel as an appointed Conservative representative and I hope to continue in that role.

I attended the Annual Parish Meeting and the Annual Village Meeting on Monday 13 May to give my regular reports to the Parish Council.

**Contact:** [jenny.hollingsbee@folkestone-hythe.gov.uk](mailto:jenny.hollingsbee@folkestone-hythe.gov.uk) Mobile 07887918458 X (Twitter) @jennyhollingsbe

I had a very pleasant time at Tayne Field on Saturday afternoon getting involved in the Chalk stream dipping and monitoring. I learnt a lot more about chalk streams and why their management is so very important to the environment.

There have not been any more landslides in Folkestone but, for safety reasons, KCC has announced that Remembrance Road will remain closed until the end of the year. The good news is that the zig-zag path on the Leas Cliff has reopened.

Following recent changes and reorganisation, the Council is now looking for a new Independent Chair to lead the Otterpool Park LLP board. Details of the position can be found on the Council's website. The District Council is delighted that Otterpool Park has been included within Homes England's business plan for next year. Working in partnership we hope to deliver the wastewater treatment plant and highways improvements before the first phase commences.

125 council owned properties have been refurbished as part of the Social Housing Decarbonisation project and the tenants are reporting lower energy bills. A further 300 properties are being assessed to be included in the next wave of funding.

Also, there are still funds available in the Rural England Prosperity Fund so if you are a small business that is thinking about making an investment or a community project, please check out the details on the Folkestone Works website and make an application for funds. We have had two successful grant applications approved in our ward already.

**Contact:** [elaine.martin@folkestone-hythe.gov.uk](mailto:elaine.martin@folkestone-hythe.gov.uk)

### THE LYMINGE ASSOCIATION



SOMETHING FOR THE WHOLE COMMUNITY

LYMINGE SHOWCASE  
1ST JUNE 2024

LYMINGE VILLAGE HALL  
12NOON - 4PM

**THE LYMINGE LAUREATES** is a small poetry group that meet on the last Tuesday of each month at 10:30am in Lyminge library. We discuss poets and poems in a relaxed way and have a go at creating beauty and meaningful communication through our own works (see below).

We have just produced our fourth collection of poems available to read at the library, or for purchase (proceeds to charity) from Jane Buss ([janelbuss@gmail.com](mailto:janelbuss@gmail.com)). Come join us at the library - listen, play and write!

### To a Wire-Haired Dachshund

You remind me of the others,  
The ones who went before,  
I fell in love at once,  
The first one that I saw.

I've watched you since a pup  
You're typical of your breed,  
No wonder I've paid a fortune,  
To satisfy my need.



It is without effort-  
You give me love and joy,  
The only difference from the others  
They were girls and you were born a boy.

I could go on forever  
On the virtue of the breed,  
The problem is you've chewed this pencil,  
The very thing I need!

by Tony Barnes





## LYMINGE HISTORICAL SOCIETY

The forthcoming talk is on Tuesday 4th June, at 7.30pm in  
The Tayne Centre, Church Road, Lyminge

### **IS THAT RUFF ENOUGH? A STORY OF LACE MAKING**

**Speaker: Janice Cooper**



Annual Membership Fee: £11  
New members and visitors are always welcome  
Visitors: £4 Payable on the door

All our publications, including our latest volume Lyminge a History Part 13, are on sale at  
our meetings. We accept payments by cash or card.

# A Little More Joy

## Eco-friendly gift boxes



Vibrant, environmentally conscious gift boxes that are kind to  
the planet. We also have a build your own option for a more  
bespoke gift.

10% Discount on your first order (**welcome10**).  
Local collection (Lyminge) can be arranged via email.

### **Contact details**

Website: [www.alittlemorejoy.co.uk](http://www.alittlemorejoy.co.uk)

Email: [alittlemorejoyuk@outlook.com](mailto:alittlemorejoyuk@outlook.com)



## PRIVATE CARER

Now available following a long term post

- \* Caring with compassion
- \* Companionship
- \* Personal care
- \* House duties
- \* Preparing and cooking meals
- \* Assisting with all medical appointments & any medication requirements
- \* Fully insured & DAB checked
- \* References available

**Contact Jackie:**

**07742251263**

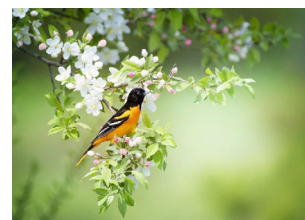
**or**

**Jackiekearns3@aol.com**



## CANTORES

**Music Director: Jon Williams**



## Summer Concert

**Including songs, excerpts from musicals,  
madrigals & musical surprises!**

**At Lyminge Village Hall**

**Saturday 6<sup>th</sup> July 2024, 4 pm**

**Raffle & Refreshments**

**Tickets on door: £10, children free**

Charity Registration No. 1087409

## Etchinghill Update - June 2024

### ETCHINGHILL RESIDENTS' ASSOCIATION (ERA)

Chairman: David McCombe - 07939 076617 E-mail: [dmccombel@gmail.com](mailto:dmccombel@gmail.com)

Website: [www.etchinghill.info](http://www.etchinghill.info) Facebook: Etchinghill Residents

**FILM NIGHT - MONDAY 17 JUNE - ETCHINGHILL VILLAGE HALL - 7.30PM (DOORS OPEN 7PM). "THE OLD OAK" 15.** Drama starring Dave Turner, Ebla Mari and Claire Rodgers. The Old Oak is a special place; not only is it the last pub standing, but it's also the only remaining public space where people can meet in a once thriving mining community. TJ Ballantyne, the landlord, hangs on to the pub by his fingertips, and his predicament is endangered even more when the Old Oak becomes contested territory after the arrival of Syrian refugees who are placed in the village without any notice. In an unlikely friendship, TJ meets a curious young Syrian, Yara, with her camera. Can they find a way for the two communities to understand each other?

Entry fee is only £6 pp and includes a glass of wine, tea or coffee with biscuits and entry into a free raffle. New members are welcome, simply register and pay on the night - no need to book.

**SPRING QUIZ NIGHT 27 APRIL** - around 60 people enjoyed the evening and raised a splendid £250 from the raffle and 'heads and tails' game. The monies have since been donated to the Kent, Sussex and Surrey air ambulance appeal to purchase a second aircraft. A further £130 was raised from entry fees, after a deduction for running costs (e.g. hall hire), which will be added to ERA funds to be used for the benefit of the community.

Thank you to everyone who attended the quiz or made donations.

**News contact: Jacqui Blandford - 07543 966830 or email: [jacqui.blandford@gmail.com](mailto:jacqui.blandford@gmail.com)**



## Can you please help??

The Lyminge Association is responsible for the newsletter. It is compiled to the best of the editor's ability and no matter how carefully, some mistakes slip the net, either typos, grammar, layout or accuracy of the details.

**We are currently looking for another person to help proof read it. If this suits your skill set and you are able to give an hour a month to help out prior to it going to print on 25th of the month, then we'd love to hear from you.**

Please contact: The Editor: [pbarnes20@icloud.com](mailto:pbarnes20@icloud.com) or **07808775302** or **863737**

**We've never done this before!**  
**Live Theatre at the Museum!**



### "We'll Meet Again"

A One Act Play

By Ingrid Goodchild

set on the Elham Valley Line towards the end of the second World War

To be performed in the Open Air at the Museum Site

[Weather permitting]

and

### The Elham Valley Line Story

An Audio-Visual presentation telling the story of the line from its first inception until the final closure in 1947

To be shown on the mezzanine floor in George's barn

**Friday 14th June and Saturday 15th June starting at 7.30pm**

The evening will be divided into two parts of around 20 to 25 minutes with an interval during which Refreshments may be purchased in the Tea Room

**Tickets** are £5.00 and can only be purchased from the Model Shop at the Museum site when the Museum is open at weekends and the last May Bank Holiday Monday

**Numbers are limited, so get your tickets as soon as you can!**

In the event of unsuitable weather, tickets will be refunded

Elham Valley Line Trust, Reg. Charity No. 295563





## Opportunity to become a Governor at Lyminge Church of England Primary School

Do you have the skills and insight needed to become a School Governor? We are looking for someone to take up this vital and important voluntary role in our local community. Applicants who can demonstrate a good understanding of the purpose and principles of governance are especially welcome, but we also value applicants with the commitment to learn and progress in the role.

As a Governor of Lyminge School you will work with an experienced and dedicated team to fulfil the statutory responsibilities of the Governing Board, supporting staff to ensure the school provides the best possible education for all its pupils. Governors are expected to uphold the school's Christian values, and to maintain high expectations for behaviour and academic achievement. The school has recently undergone a very successful Ofsted inspection. If you are interested in applying for this role, please write a brief statement outlining what you would be able to bring to the Governing Board. Please include contact details for two referees.

**Send it before the closing date of June 7th 2024:**

- By email addressed to the Chair of the Governing Body, via Susan Foster, Clerk, at [sfoster@lyminge.kent.sch.uk](mailto:sfoster@lyminge.kent.sch.uk)
- By letter addressed to the Chair of the Governing Body via the school office or by post c/o Emma Wren (Senior Administrator), Lyminge Church of England Primary School, Church Rd, Lyminge, CT18 8JA

Applicants will be contacted by Sarah Montgomery, Chair, soon after 7th June to arrange a meeting to discuss the role in more detail.

## FAMILY PRAISE SERVICE

St Mary and St Ethelburga Church  
Sunday 23<sup>rd</sup> June – 10.00 am

Followed by

## 'Teddy Bear Jump' & BBQ



Is your bear brave enough to jump off the Church tower?

Why not make him a parachute and give it a go?

Kids, Mums, Dads, Grandmas and Grandads.  
Come and join the fun.



## Lyminge Judo Club

(Bushido Club registered)

We are a small friendly village club. We welcome and encourage both novices and skilled players and train every Monday evening at Lyminge Village Hall from 6.30pm. Open to all ages from 6 upwards - no upper age limit.

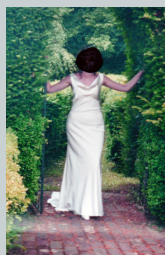
Juniors £2.50 per week; Seniors £3.50 per week. First session free, with no obligation.

**Contact: Craig Munn** email: [craig.munn1@yahoo.com](mailto:craig.munn1@yahoo.com)

Facebook: [www.facebook.com/Lymingejudoclub](https://www.facebook.com/Lymingejudoclub)

## FOR SALE

Wedding Dress Size 12  
and Shoes size 5½  
£199.00



Mabel Midsleeper  
Bedframe and Mattress  
In good condition - like new. £199.00



Open to offers

**Phone 07780925094**

**Elham**

**Summer food & craft festival**

Sunday 9 June 11am - 2pm

VILLAGE SQUARE & CHURCH

**40+ STALLS**

NGS ELHAM OPEN GARDENS  
Sat 8th & Sun 9th June  
noon - 4:30pm

PENNYROYAL

CLOG DANCERS

Chancel Café

Supported by  
[colebrooksturrock.com](https://www.colebrooksturrock.com)

**LOCAL PRODUCE**  
CHEESE - BREAD  
OLIVES - CAKES  
LAMB - PORK  
EGGS - CHUTNEYS  
PLANTS  
GATEHOUSE FARM  
MUSKET DOG BISCUITS  
& MORE...

**Scarecrow Winners announced**

**Church Bells**

**Handmade Crafts**

**Raffle**  
SUPERB PRIZES  
in aid of  
Elham Primary School

**POLICE HOME SECURITY**

For more information: Debbie Francis, Elham Farmers' Market manager,  
[elhamfarmersmarket@gmail.com](mailto:elhamfarmersmarket@gmail.com) [KFMA.org.uk/elham](https://www.kfma.org.uk/elham) [facebook.com/elhamfarmersmarket](https://www.facebook.com/elhamfarmersmarket)



# Wellbeing Tips for Summer

Summer is here. Finally, some of you might say! Longer and brighter days, warmer temperatures (some days anyway!). It can be easy to take summer for granted. Before you know it, you'll be saying, "Can you believe it's September already? Didn't that come around quickly!"

You will stand there and marvel at where these past three months have gone. Isn't it a shame to let a whole season pass you by without noticing?

Here are some things that you can do to make the most out of your summer and not let it pass you by almost unnoticed.

- **Enjoy the longer days**

When you first wake up, try to resist looking at your phone long enough to make it to the window, open the curtains and look outside. And really look. Don't just quickly glance before moving on with your day. Notice the colour of the sky, the clouds, the trees, the flowers, listen to the birds... Really acknowledge the nature around you.

Go outside as often as you can. Walk in nature and again, really notice it. If you have any problems sleeping, making sure that you are exposing your eyes to the morning sunlight can be really helpful as it stimulates the production of a hormone that is necessary to make you feel sleepy in the evening.

- **Breathe**

We don't breathe enough. Not properly anyway. Summer is the ideal time to sit outside, in the sun or the shade, and just breathe. Notice your breath as it comes in and out. You might find that it naturally grows slower and deeper as you observe it. Breathing in this way is the antidote to stress. By breathing deeply, you relax your whole nervous system. You will find yourself becoming calmer, more relaxed and probably happier after just a few minutes. Try it. It's worth it.

- **Slow down**

Summer is almost synonymous with holidays. If you are lucky enough to go away, it will come easily enough to disconnect and slow down. You'll find yourself chilling by the pool, throwing away any kind of schedule and enjoying life one moment at a time. You don't have to go away to do this. Even if you are working through the summer, block some time for you to do nothing in particular. Use these moments to go for walks, read a book, enjoy a favourite hobby and just sit somewhere comfortable and be. If you find this last one hard (we are so used to being busy), you can occupy your mind by noticing all the sounds you can hear or focusing on the feeling of the air on your skin.

- **Do something new**

With longer days, we have more time available to us. So why not make this summer more memorable by trying something new. I'm not talking about skydiving (though why not if that's your thing!) but you could visit some new place or try a new activity. It might be as simple as cooking something new or picking a new place to walk the dog. Not only will you build memories but you will also feel energised by the experience. It has been proven that a key ingredient to keeping our body and mind young and healthy for as long as possible is to experience new things, such as learning a new skill or visiting new places.

- **Reconnect with yourself**

It is incredibly easy to get lost in our daily routine. Summer is the perfect time to take a moment to check in with yourself. How are you feeling? Do you need to rest more? Is there anything that you'd like to do that you never seem to find the time for? Can you make it happen over the summer? How has the year so far been for you? What would you like to do with the second half of the year?

These are just a few topics to ponder as you sit with your face turned to the sunlight (with sun protection on obviously!).

I love summer. I really believe that making the most of summer carries me through the darker part of the year. If like me, you are not a fan of the shorter and colder days of autumn and winter, really embrace summer. Let the sunlight and longer days fill you with energy. Create memories, celebrate what nature has to offer by enjoying the beautiful sceneries and the abundance of fruits, take some time to try something new and reconnect with yourself. And I promise you that come September, you will not stand and wonder where these three months have gone. Instead, you will marvel at how great a summer you have had and how good you feel.

*Michele Patart* (michele.patart@gmail.com) - local yoga teacher





## The POSTLING COFFEE & CAKE MORNING IN AID OF THE PILGRIMS HOSPICE

**Saturday 8th June 10am to 12noon at Postling Church**

**ALL DONATIONS GO TO THE PILGRIMS HOSPICE IN THEIR ENTIRETY - PLEASE BRING CASH**

**ETCHINGHILL RESIDENTS' ASSOCIATION**

**Film Night**

*'The Old Oak'*<sup>15</sup>  
**Monday 17th June**  
Etchinghill Village Hall - 7 for 7.30pm  
Entrance Fee £6pp  
Open to new and existing members  
Free Refreshments and Raffle



[www.etchinghill.info](http://www.etchinghill.info)

**Charity Concert @ Lyminge Village Hall**  
**Friday 19th July 7:30pm**  
All proceeds to the Brain Tumour Charity



**THE  
BRAIN  
TUMOUR  
CHARITY**



**JUDY  
D'CRUZ  
FUND**

**#ACureCantWait**

Bring your own food and nibbles.  
Please support the charity by using our bar.  
Tickets £5 from [gerry@dacruz.eu](mailto:gerry@dacruz.eu)



## AK Healthcare

### Clinic update!

Adam and Katie, the osteopaths from AK Healthcare in Lyminge, are thrilled to announce that **Podiatrist Natasha Kerrigan** will be joining us to offer her expert Podiatry services within our clinic.

**Natasha** qualified from the Leaf Hospital Brighton University in 2002 with an Honours degree in Podiatry. She has 12 years' experience in the NHS as a specialist Diabetic Podiatrist and then entered the private sector in 2014 running Earls Gate Podiatry in Folkestone.

**On Tuesdays in Lyminge, Natasha is providing podiatry services from simple toenail cutting to ingrown toenail surgery and wound care. To ask Natasha how she can help you and to make a booking, please contact her directly:**

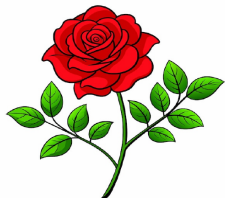
**Tel: 07855771890 Email: [info@earlsgatepodiatry.co.uk](mailto:info@earlsgatepodiatry.co.uk)**



For any other musculoskeletal problems including arthritic pain, back pain, sciatica and sports injuries (and more), please contact Adam and Katie directly on **07904311554** or email us at [info@akhealthcare.org.uk](mailto:info@akhealthcare.org.uk)



## GARDEN VISIT TO DOWNS COURT



Join us for a return visit to  
Downs Court, Boughton Aluph  
TN25 4EU

Tuesday 18<sup>th</sup> June when the  
garden should be at it's best.  
Meet at the garden at 2:15pm  
for a 2:30pm start.

Entry charge £10 per person  
to include tea and cake

If you would like to join us please  
email:

[lymingegardeners@gmail.com](mailto:lymingegardeners@gmail.com)

or telephone Heather on 07427 664084  
for more details.

### SUMMER SHOW AND PLANT SALE

20<sup>th</sup> July  
at The Tayne Centre  
More details next month

For general  
information about the Gardeners' Society please email:  
[lymingegardeners@gmail.com](mailto:lymingegardeners@gmail.com)  
or call Anne on 07703 149008

## POSTLING VILLAGE OPEN GARDENS EXTRAVAGANZA

1 & 2 JUNE 2024

BBQ - LOCAL SAUSAGES & BURGERS

HAVE-A-GO ARCHERY

CRAFT STALLS

HOMEMADE CAKES & TEA

PLANT STALLS

MEET THE LAMBS AND OTHER ANIMALS



### Fifth Trust Update

[www.fifthtrust.co.uk](http://www.fifthtrust.co.uk)

We are preparing for a month-long fundraising effort to rebuild our music room which is on its last legs. We have planned a series of events to collectively cover the total 222km distance of the historic Pilgrims Way. On 5 July students and staff will cycle from Toddlers Cove to Chartham. Over the following fortnight, we will be holding a range of events, including walks, treasure hunts, bake sales and more including a 20km walk ending at the Cathedral. The fundraising activities will conclude on 26 July with the return of our Team5T Triathlon. Feeling inspired? Then make a difference and donate to our campaign today: [www.justgiving.com/campaign/5Tfundraiser](http://www.justgiving.com/campaign/5Tfundraiser)

We have savings on logs ordered/delivered by 31 August. Order now on: 01227 831052. Select call option 2. (week days only). If our phone lines are busy, please email [plant.centre@fifthtrust.co.uk](mailto:plant.centre@fifthtrust.co.uk).



Hythe Aqua Swimming Club has vacancies for potential competitive swimmers Level 7 and above. Join a Club with a nationally accredited swim programme. Lessons/Coaching sessions are held on Tuesday & Thursday evenings at Hythe Pool.

We also welcome adult length swimmers to our Adult training on Tuesdays & Thursdays at 9.00pm

To book your place

Email: [hytheaqua@btinternet.com](mailto:hytheaqua@btinternet.com) or checkout our website:  
[www.hytheaqua.org.uk](http://www.hytheaqua.org.uk) or F/book

### Rhodes Minnis Circle

Our speaker in April was Nick Smith who showed us beautiful colour slides of birds he had seen during his travels in Kent.

The Competition was won by Sandra Dowdall with Paula Peers 2nd, Chris Payne 3rd and Jackie Storey 4th.

On **26th June Len Howell** is coming to tell us about **Mappa Mundi**.

We meet at Rhodes Minnis Hall at 2-30pm and visitors are very welcome.

For further information contact **Marion 862913**.



**MY CLEAR EARS**  
MICROSUCTION WAX REMOVAL

**Clinical ear care practitioner  
through TympaHealth and with  
CQC registration, fully insured.**

Appointments available for wax removal by microsuction. Wax removal £60. Otoscopy £20 (Ear health check). In the comfort of your own home!

**Please call Collette on 07544586882**





### **Lyminge Friends**

**Wednesday, 1st June** takes us to **St. Nicolas Church, New Romney** with guest speaker, Gaynor Cobb. This is followed by a fish & chip lunch at a local restaurant at a specially negotiated price of £10. An optional walk along the seafront afterwards – weather permitting, of course!

Further ahead, **Wednesday, 3rd July** will be a talk by Maureen Lewsey – **"My Life with St. John Ambulance."**

**Wednesday, 7th August** is our **Summer Lunch** being held this year in the Gardens of Lyminge Church. The cost is £7 which includes food and a glass of wine/soft drinks.

**Everyone welcome – Entry is £4** (including Tea/Coffee)

We are a friendly social group and welcome new members and visitors so just drop into a meeting, or if you'd like to talk to one of us first, please call 07904 157897. All meetings are in the Rigden Room of the Tayne Centre from 10.30 a.m. to 12.00 p.m. unless otherwise stated.

See P31 for photos from recent meeting.



## **Lyminge Primary School Summer Fayre**

**Saturday 6th July 2024  
11am – 2pm  
on Tayne Field**

Free entry. Inflatables, stalls and games.  
BBQ, refreshments, bottle tombola, raffle,  
books & toys, live music and lots more!  
Please come and support our school.

Run by Lyminge School PFA  
Raising money to support the children at our village school.

"Good judgment comes from experience, and  
experience comes from bad judgment."

**Rita Mae Brown**

**Freshly Prepared  
Breakfasts & Light Lunches  
Home Baked Cakes  
Vintage Afternoon Teas  
Coffees  
Teas  
Takeaway Available  
Private Functions**

**Open Tuesday to Saturday  
9am to 3pm  
Dog Friendly**

**THE COFFEE CABIN TEA ROOM LTD.  
CANTERBURY ROAD, LYMINGE, KENT.  
CT18 8HU. 01303 864222  
Instagram @thecoffeecabintearoomltd  
Find us on Google Maps**

## **Letters To The Editor**

**DO YOU HAVE QUESTIONS AS TO WHY WE HAVE A 48%  
INCREASE IN THE LOCAL PARISH COUNCIL TAX?**

I attended the Lyminge Parish Council's Annual Meeting on 13th May and asked various questions regarding this increase of 48% in the local tax.

The Council members present were unable to fully answer the questions at that time and have suggested that people send their questions to the Council's clerk - contact details below. They will then publish the questions and full answers in the July Newsletter.

Please submit your questions by 10th June so they have time to forward their answers to the Newsletter editor for the July print run.

*Richard Chubb*

### **Clerks Contact Details:**

Email: [clerk@lymingeparishcouncil.org.uk](mailto:clerk@lymingeparishcouncil.org.uk)

Tel: 07999 403948

Post: Lyminge Parish Council, % Coach and Horses, Lyminge  
CT18 8JA

## **C. Brewer**

**Painting and Decorating  
Interior and Exterior Painting**

15 years of experience ~ a keen eye for detail  
Clean and tidy worker

Good rates and senior citizens discount of 10% off labour

**07510 631497**



Hythe, Lyminge & Ashford  
**ageUK**

# Singing FOR ALL

**Free  
Wednesdays  
Term time only  
11am - 12noon**

Age UK Lyminge,  
Everist Court,  
63 Station Road,  
Lyminge,  
CT8 8HQ

Registered charity number 1125274. Company number 6589817.  
© Age UK Hythe, Lyminge and Ashford 2024.

Sponsored by



**Join us for  
All Day Breakfast**

Every Wednesday

9am - 2pm

£6 pp - includes Tea/Coffee

No need to book

AGE UK Lyminge, Everist Court



Registered charity number 1125274. Company number 6589817. © Age UK Hythe, Lyminge and Ashford 2023.

## AGE UK - LYMINGE



### Weigh In Wednesdays

**Wednesday, 1st May at 4PM, £4 per person**

**63 Station Rd, Lyminge, Folkestone CT18 8HQ**

Looking to trim up and lose a few lbs? Come along to our weekly weigh in at [Age UK Lyminge](#).

We cannot offer nutritional advice, but we can get together to cheer each other on!

£2 of the charge will go towards our vital fundraising and £2 will be collected and presented to the person losing the most weight each month.



Registered charity number 1125274. Company number 6589817.  
© Age UK Hythe, Lyminge and Ashford 2024.



### We need your help!

Cleo, Emma and Sam, who is living with Dementia, are going to

## Complete the Everest Base Camp Trek Challenge

All funds raised will go directly to Age UK Hythe, Lyminge and Ashford – to support those living with Dementia.

Climbing to Everest Base Camp is definitely a challenge not to be taken lightly, but it is an achievable one! We know we can do it especially with your support.



Donations can be made online, through Go fund me at

[www.ageuk.org.uk/hythelymingeashford/](http://www.ageuk.org.uk/hythelymingeashford/)

**01303 269602**

[co@ageukhla.org.uk](mailto:co@ageukhla.org.uk)



Registered charity number 1125274. Company number 6589817. © Age UK Hythe, Lyminge and Ashford 2024.



# LYMINGE AND ELHAM VALLEY STROKE SUPPORT

Have you, a family member or a friend been affected by a stroke?

Come and join our informal support group.

For more information, to check the dates of meetings/events, or if you would like support but are unable to attend the meetings

Email: [Lymingestrokesocial@gmail.com](mailto:Lymingestrokesocial@gmail.com)  
or Telephone: 07846 177 409

## Dates for next meetings

3<sup>rd</sup> and 17<sup>th</sup> June

We will also be at The Lyminge Showcase event on 1<sup>st</sup> June, so come and say 'Hello'

**We meet on the  
1<sup>st</sup> and 3<sup>rd</sup>  
Mondays of the  
month (except  
Bank Holidays)  
usually at  
The Coach and  
Horses, Lyminge  
-  
10am until  
12noon**

# THE TOWER THEATRE FOLKESTONE

Folkestone-Hythe Operatic & Dramatic Society presents



Music by Alan Menken    Lyrics by Howard Ashman & Tim Rice    Book by Linda Woolverton

Originally Directed by Robert Jess Roth

Originally Produced by  
Disney Theatrical Productions

**28<sup>th</sup> June – 7<sup>th</sup> July**



This amateur production is presented by arrangement with Music Theatre International. All authorised performance materials are also supplied by MTI. [www.mtishows.co.uk](http://www.mtishows.co.uk)

Registered Charity 1180504

**BOX OFFICE 01303 223925 or [towertheatrefolkestone.co.uk](http://towertheatrefolkestone.co.uk)**  
The Tower Theatre, North Road, Shorncliffe, Folkestone CT20 3HL



**4TH SUNDAY  
OF EACH  
MONTH**

**Sunday June 23  
Sunday July 28  
Sunday Aug 25  
Sunday Sept 23**

**9.30-12.30  
LYMINGE  
VILLAGE  
HALL**

**ELHAM**

**Scarecrows**

The competition is back  
with a **WEATHER** theme

Display yours from  
**Saturday 11 May**

**11-18 May** Register your scarecrow  
for FREE at the village shop.

**21 May** Maps for visitors available from shop

Winners will be announced at  
Elham Farmers' Market on  
**Sunday 9 June**

Event organised by  
**Elham Farmers' Market**

with the support of  
Colebrook Sturrock



For more information: Debbie Francis, Elham Farmers' Market manager,  
[elhamfarmersmarket@gmail.com](mailto:elhamfarmersmarket@gmail.com)    [KFMA.org.uk/elham](http://KFMA.org.uk/elham)    [facebook.com/elhamfarmersmarket](https://facebook.com/elhamfarmersmarket)

# LYMINGE PARISH COUNCIL

Etchinghill - Lyminge - Rhodes Minnis

[www.lymingeparishcouncil.org.uk](http://www.lymingeparishcouncil.org.uk)

[clerk@lymingeparishcouncil.org.uk](mailto:clerk@lymingeparishcouncil.org.uk)



Agendas, minutes and relevant reports are published on the council website. If you would like a copy of council documents please contact the clerk.

## COMMITTEES AND CHAIRS

Following the Annual Meeting of the Parish Council in May, we have changed our committees to suit our current needs and co-opted three new councillors, bringing us up to a full council!

Chairman of the council: Cllr Emily Arnold

Vice-Chairman of the council: Cllr Tim Rising

The committees and their chairs are:

1. Finance and Administration (Cllr Janine Fuller)
2. Climate Action (Cllr Tony King)
3. Planning and Licencing (Cllr Roger Joyce)
4. Community Engagement and Events (Cllr Alex Bojangles Munns-Hamilton)
5. Neighbourhood Plan (Cllr Alice Munns-Hamilton)

We have also adopted a personnel committee to ensure the council is fulfilling its obligations as employers.

Please remember that ALL of our meetings are open to the public. For info, contact the clerk.

## UPCOMING EVENTS

**D DAY 80TH  
ANNIVERSARY  
JUNE 6TH**

**SUMMER  
FESTIVAL  
JULY 6TH**

**IF YOU WANT  
TO GET  
INVOLVED IN  
ORGANISING  
PARISH  
EVENTS,  
CONTACT US.**



## CONTACT INFORMATION

General - [clerk@lymingeparishcouncil.org.uk](mailto:clerk@lymingeparishcouncil.org.uk) / 07999 403948

Handyman - [fred@lymingeparishcouncil.org.uk](mailto:fred@lymingeparishcouncil.org.uk)

### SPEED WATCH:

We are in desperate need of more speed watch volunteers. As you know, speeding through the villages is a big problem and our speed watch volunteers play an important role in documenting the speeding. The number of volunteers is incredibly small and we need more people to help.

It wouldn't be a large commitment, perhaps once a month or less if we can get enough people!

If you can help, please contact the clerk or Dennis Charman 07739998262 [lymingespeed@aol.com](mailto:lymingespeed@aol.com)

### 2024/2025 BUDGET:

At the Annual Parish Meeting a number of questions were asked about the precept increase, due to time constraints we were unable to answer the questions as effectively and as detailed as we would have liked and suggested that questions be submitted to us to publish in the next newsletter. If you have questions, please email them to the clerk ASAP and we will respond to you directly but will also publish the answers.

## UPCOMING MEETINGS

### **FULL COUNCIL**

(FROM 19:00)

10 JUNE

8 JULY

12 AUGUST

9 SEPTEMBER

14 OCTOBER

11 NOVEMBER

9 DECEMBER

### **COMMUNITY ENGAGEMENT AND EVENTS**

(FROM 19:30)

3 JUNE

5 AUGUST

7 OCTOBER

9 DECEMBER

### **CLIMATE ACTION**

(FROM 19:30)

10 JUNE

8 JULY

12 AUGUST

9 SEPTEMBER

14 OCTOBER

11 NOVEMBER

9 DECEMBER

### **FINANCE + ADMIN**

(FROM 18:30)

3 JUNE

1 JULY

5 AUGUST

2 SEPTEMBER

7 OCTOBER

4 NOVEMBER

2 DECEMBER

### **NEIGHBOURHOOD PLAN**

Meetings for the Neighbourhood Plan committee will be held as required. If you want to be kept up-to-date please email the clerk and join our mailing list OR keep an eye on our Facebook/website.

### **JOINED UP THINKING**

If you want to get involved, but do not want to join the council, you are welcome to join any of our committees as non-voting members! This means you can have a say in what is happening in the council/parish without needing to join the council!



## Thoughtful Food....

...is a group of local volunteers looking at our food, and how this impacts climate change. Our aims are to support people to produce more of their own food, and to shop locally, sourcing seasonal produce. We also run a community allotment in Lyminge and welcome new members.

**Contact:** [thoughtfulfoodgroup@gmail.com](mailto:thoughtfulfoodgroup@gmail.com) or on Facebook and Instagram [@thoughtfulfoodgroup](https://www.instagram.com/thoughtfulfoodgroup)

Next **Thoughtful Food** meeting, **Tuesday 4th June, 7.15pm**, at the Coach and Horses Public House

## Pick up a Plant (more photos page 31)

The sun came out for the Thoughtful Food, 'Pick up a Plant' showing off the amazing selection of plants kindly donated. Thank you to all those people who brought along donations and for your time and care of the magnificent plants on offer. The stall was bursting with edibles, courgettes, tomatoes including heritage varieties, beetroot, onions and more. There was also a good selection of flowering plants and house plants along with sunflowers for the Lyminge gardener's annual sunflower growing competition and the offer of Hawthorn whips.

Pick up a Plant provides an opportunity not only to grab some very good quality plants grown with love for free but it offers the chance to get advice on growing or just a chat. It's good to see regular visitors who already know this! Katie from Elham has been coming for three years after a friend told her about it. She said her first visit had encouraged her to start growing her own vegetables and now has an allotment. This is what Thoughtful Food was established for and is great to hear.

The offer of Hawthorns started a good discussion about making Hawthorn jelly. One visitor Nick, a Cypriot, told us his mother had made him climb up into the mountains in Cyprus to collect Hawthorns as she said they only grew there. She was amazed to hear they grow in Kent.

Pick Up a Plant always happens in May so put a note in your 2025 diary to look out for next years.



## What To Cook With What's Growing - June: Beetroot

Whether roasted with your Sunday lunch, or served raw in a summer slaw, there are lots of options with beetroot. Brighten up any salad with beetroot, including the leaves too as they are edible and make a colourful addition.

Beetroots can also be sown repeatedly from spring to mid-summer, providing a continuous harvest. Being straight forward to grow- you can sow directly into the soil in spring- and providing a crop after around 50 days, beetroots are great to grow at home. They don't take up too much space either, and can be 'multisown' (around 4-5 seeds sown together to grow in a clump) making them very productive in a small space.

**Pink Beetroot Pasta (Riverford)** [www.riverford.co.uk/recipes/pink-beetroot-pasta](http://www.riverford.co.uk/recipes/pink-beetroot-pasta). Serves 2. 1h 15 min.

This beetroot and feta pasta probably caught your eye because of its beautiful pink colour, but the flavour is equally surprising. The earthy-sweet taste of the beetroot becomes mild when mixed with the rest of the ingredients, making it a good recipe for those who don't love the taste but want to have all the nutritional benefits; we even encourage you to add the beetroot leaves if available. The pasta is topped with a walnut and oregano paste, but you can make a quicker version by adding chopped nuts and herbs at the end, or just serve the pasta as it is.

### Ingredients

- 350g beetroot
- 10g fresh oregano or basil, leaves stripped from the stalk
- 30g walnuts
- 200g pasta of choice
- 100g feta cheese, plus more for garnish
- 50g sundried tomatoes (optional)
- zest & juice of 1 lemon
- olive oil
- salt & pepper

**Method** Prep time: 15 min Cooking time: 1hr

**Step 1** Rinse the beetroots under water and scrub them to remove any dirt. Cut away and save the green leaves (if you have them) leaving 2-3 cm of the stalk attached to the beetroot, to help keep the beetroot from leaching juices during cooking. Put the beetroots in a saucepan and cover with boiling water and 1 teaspoon of salt. Boil until tender; small beetroot will cook quicker than larger ones (don't be tempted to peel or cut them up to speed up cooking time – they will lose flavour).

**Step 2** Meanwhile, make the walnut and oregano topping. Start by lightly toasting the walnuts in a dry frying pan. Now add the oregano leaves to a pestle and mortar, sprinkle with salt, and grind until it becomes a paste. Add the walnuts in small batches and continue to grind the mixture, slowly adding 2 tablespoons of olive oil to combine all the ingredients. Add black pepper, taste and adjust seasoning if necessary. Keep aside for later.

**Step 3** Drain the beetroots. Allow to cool until you can comfortably handle them.

**Step 4** To prevent staining your hands while peeling, hold a sheet of kitchen paper with a cooked beetroot inside and pull back the skin to remove it.

**Step 5** Cook the pasta al dente according to the package instructions.

**Step 6** Meanwhile make the sauce by putting the beetroot and feta into a blender with the sundried tomatoes (if using), lemon zest and juice, 2 tablespoons of olive oil and salt and pepper. Blend until smooth, adding water if needed to achieve the desired consistency. Taste and adjust seasoning if necessary.

**Step 7** Drain the pasta and place it back into the pan. If using beetroot leaves, wash, chop and add them to the pasta. Pour in the beetroot sauce and mix through.

**Step 8** Divide between 2 bowls and finish with a little crumbled feta and spoon the walnut and oregano paste on top.



## Very Best Seasonal Wishes from Thoughtful Food





# Chalk Stream Monitoring and Awareness Afternoon

A very big thank you to all those who attended the stream-dipping afternoon on 11th May to help evaluate the health of the Nailbourne. We had an excellent turnout and with the help of local experts were able to enjoy identifying some of the wildlife living among its stones and watercress beds. In addition to the excitement of a male stickleback in full breeding colours and numerous tiny stickleback young, many invertebrates were found. Although small, such invertebrates are the lifeblood of chalk streams like ours, acting like a miner's canary in signalling the health of a watercourse, so it was encouraging to find a good range, although not at levels we would normally expect.



The Nailbourne is a very rare habitat, one of only around 200 pure chalk streams in the world. As part of our responsibility to protect it, we plan to launch a community project in the coming months to regularly monitor the health of the stream both in the village and at points along the Elham Valley, and to increase awareness of what a rare and precious habitat we are fortunate enough to have on our doorsteps. This will include a programme of

river warden training, and community events. This will include events such as stream dipping days, as well as the creation of a travelling exhibition with information about the ecology of the stream, historic maps and photographs of the Nailbourne itself along with the buildings and businesses that previously used its waters and water meadows, not forgetting the many myths and legends that are associated with it. Look out for further information on this initiative in future Newsletters, or contact us on [tony.king@lymingeparishcouncil.org.uk](mailto:tony.king@lymingeparishcouncil.org.uk) or via our Lyminge Climate Action facebook group.

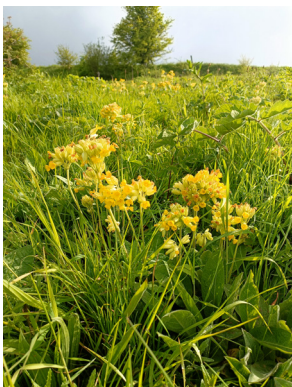


## “Where the bee sucks, there suck I...”

*“...in a cowslip's bell I lie”*. The line from the Bard that sprang into my mind on May Day as we strolled out of Lyminge Churchyard on to Court Lodge Green (or the “Bumpy Field” as it is fondly known) to be greeted by swathes of butter yellow cowslips shining in the late afternoon sunshine....

Joyfully, they represented the efforts of the Lyminge Climate Action group coming to fruition. These shining patches of cowslips matched perfectly with the areas that had been seeded back in 2019... Result! In October 2019 a group of hardy volunteers rotavated and seeded several patches of Court Lodge Green. It looked pretty dreadful at the time and there were some negative comments about our efforts but Rome wasn't built in a day and neither is habitat restoration! The management plan that the Climate Action Group wrote, supported by the Parish Council, will take many seasons but changing the mowing regimes and reseedling these areas are steps along the way designed to reduce the soil nutrients and encourage back our wildflowers and pollinators. So why are these cowslips so special and symbolic?

Traditionally picked to adorn garlands for May Day celebrations and spring weddings, it seems fitting that they were on display just next to the Churchyard as they are sometimes called “St. Peter's keys” or “keys of heaven” because the one-sided flower heads looked like a set of keys and it was said that they grew where St. Peter dropped the keys on Earth. However, the actual name cowslip is slightly less celestial being a distortion of “cow slop” due to their association with cow pats in grazing meadows. The cowslip is an iconic and important wildflower in our British flora and was once a common plant in meadows, ancient woodlands and hedgerows. Sadly, now it is in decline due to the loss of these habitats. According to the Woodland Trust, cowslips have great value to wildlife as an important early source of nectar for bees, beetles and early butterflies such as the Brimstone. They are also a food plant for the caterpillars of the rare and endangered Duke of Burgundy butterfly which although not yet recorded in this Parish, is found locally in east Kent so keep your eyes peeled...



***Where the bee sucks, there suck I:***

***In a cowslip's bell I lie;***

***There I couch when owls do cry.***

***On the bat's back I do fly***

***After summer merrily.***

***Merrily, merrily shall I live now***

***Under the blossom that hangs on the bough.***

**BY WILLIAM SHAKESPEARE (from *The Tempest*)**

Contributed by **Kate Bennett**

# COACH AND HORSES

Lunch service:

12:00 - 2:30

Dinner service:

5:30 - 8:00

Monday-Saturday

## WHAT'S ON?

Roast dinners  
served 12:00 - 7:00

Sundays

### WEDNESDAY LUNCH

#### Pie and mash

- Wednesday lunchtime
- £10 per person

### ALL DAY FRIDAY

#### Fishy Fry-day

- Fish dish for £10
- Includes fish and chips, scampi and chips, fish pie etc

### ALL DAY SATURDAY

#### Curry Curry Curry

- You guessed it... curry!
- £10 curry and rice
- A variety of curries including Boo's own thai curry (fan fave!)

**WE ARE  
HAPPY TO  
DELIVER  
LOCALLY  
(LYMINGE)  
FREE OF  
CHARGE**

### SECOND WEDS

#### Music bingo

- £2 per card
- £5 for bingo food
- Starts at 7:30

### FOURTH WEDS

#### Monthly quiz

- £2 per person entry
- £5 for quiz food
- Starts at 7:30

**6TH JUNE**

**80TH ANNIVERSARY OF D DAY**

**A PINT OF ALE (SMALL WINE OR SOFT DRINK) AND FISH AND CHIPS FOR 10P TO ANYONE OVER 80 YEARS WHO HAS PRE-BOOKED**





## ENVISAGE GROUNDCARE

### Domestic & Commercial

- GRASS CUTTING
- HEDGE CUTTING
- CLEARANCE
- TREE WORK
- FENCING

**Tel: 07724 447 368**

**Email:**

**[enquiries@envisagegroundcare.co.uk](mailto:enquiries@envisagegroundcare.co.uk)**

**[www.envisagegroundcare.co.uk](http://www.envisagegroundcare.co.uk)**

## **'Spring has sprung, the grass has riz....'**

...and with the weather we've been having recently, the greenery and foliage have grown exponentially, or so it seems.

There are areas where it is difficult to pass properties where hedges, vegetation, etc. are overhanging the highways and footpaths.

So could we politely ask the community with homes that border these areas to ensure they are trimmed and kept under control. Cast a critical eye and check any hedges and trees along their garden boundaries with the public highway/footpath.

**It is a property owners' responsibility to ensure that vegetation does not overhang or restrict access along a footpath.**

## **Anna Lindley (RVN, Dip.A.Physio)**



- Offering physiotherapy assessment and treatment of dogs, cats and small animals.
- Physiotherapy can help with osteoarthritis and the ageing pet, post operative orthopaedic surgery, neurological, spinal conditions, unexplained lameness and many more conditions.
- I use a combination of manual therapy, laser, ultrasound therapy, TENS, kinesiology tape and exercises to rehabilitate your pet depending on your their needs. I also address environmental and exercise factors that can help your pet with their condition.
- I am fully insured with over 16 years experience working with animals. I am a member of the International Association of Animal Therapists (IAAT).
- For more information please visit my website: [annasanimalphysio.co.uk](http://annasanimalphysio.co.uk) or feel free to contact me on 07944 606453 or [anna@annasanimalphysio.co.uk](mailto:anna@annasanimalphysio.co.uk)
- Why not follow me on social media:  
Instagram: [@annas\\_animal\\_physiotherapy](https://www.instagram.com/annas_animal_physiotherapy/),  
Facebook: [@annasanimalphysiotherapy](https://www.facebook.com/annasanimalphysiotherapy)



## **Volunteer with us**



We open up a **world of possibilities** to girls from 4-18-years-old, one where they **can do anything.**

**It's totally flexible,** you can help as much or as little as you want.

Join us for nonstop fun, learning and adventures.

### **Your local Girlguiding group needs:**

Unit leaders, unit helpers, occasional helpers, event volunteers.

No matter how much time you have to give, there's an opportunity for you in Girlguiding. Whether you see yourself being an extra pair of hands, as a unit helper, or becoming more involved as a unit leader, or in a supporting role



**Register  
today**

**[girlguiding.org.uk/volunteer](http://girlguiding.org.uk/volunteer)**



Registered charity number: Excepted from registration.

**My colleague and I are retiring this summer and 1st Lyminge Brownies are looking for new leaders to continue our unit. Sadly it will have to close if nobody comes forward to help.**

**Thank you. Angela Foxon 1st Lyminge Brownies.**

**[barnowllyminge@btinternet.com](mailto:barnowllyminge@btinternet.com)**

## MOBILE FISH & CHIP UNIT

- School Fetes
- School Proms
- Kids Parties
- Fish Suppers
- Weddings
- Christenings
- Baby Showers
- Birthday Parties



- Boot Fairs
- Charity Events
- Quiz Nights
- Festivals
- House Parties
- Garden Parties
- Corporate Events
- Workplace Breakfasts

**07955 926 835**  
kingjaneil@aol.com

## E.F.LETTINGS

Residential & Student



## YOUR LOCAL LETTING AGENT

At EFLettings we believe in a personalised service  
We are here for you every step of the way

www.eflettings.co.uk  
Tel: 01227 533550

## Sarah Holbrook

PAINTER & DECORATOR

Elevate Your Space with 20  
Years of Expertise

### Services Tailored to your Specification

Internal & External Work

Paper Hanging

Domestic & Commercial Undertaken

Peace of Mind - Fully Insured

Competitive Rates - Top-notch service at affordable prices

Free Quotations: Get a clear understanding of costs with  
no-obligation quotes.

07891743740 sholbrookdecorating@gmail.com

## Daniel Kirby Roofing & Building



Quality materials and reasonable rates  
Established 1996, based in Hawkinge, Near Folkestone,  
and covering Folkestone and Hythe areas  
Embracing all roofing work from small roof repairs to  
complete re-roofs.

What we do:

- Fibreglass Reinforced Plastic flat roofs
- Felt flat roofs
- New pitched tile and slate roofs and repairs
- Small and large jobs
- Fascias soffits and gutters
- Chimney repairs, rebuilds and removal
- Conservatory conversions
- Advice and free quotes

Visit full website below for more details

[www.roofers-folkestone.co.uk](http://www.roofers-folkestone.co.uk)

**01303 892705 07916273886**

"Growing old is mandatory; growing up is optional".

**Chili Davis**



# Kent's Leading Mobility Specialists

Over 200 new & used scooters available

**USED SCOOTERS FROM £395**

**BEDS FROM £1395**

**CHAIRS FROM £595**

Huge range of Shoes & slippers for problem feet

**HOME DEMONSTRATION LET US COME TO YOU**

**STAIRLIFTS**

Made in Britain



**FOLKESTONE STORE**

**Tel: 01303 274574**

**[www.safehandsmobility.co.uk](http://www.safehandsmobility.co.uk)**

**[folkestone@shmobility.co.uk](mailto:folkestone@shmobility.co.uk)**

Compass House, 347-349  
Cheriton Road, CT19 4BP

**ALSO AT  
BIRCHINGTON**



**HEAVER  
& LINCH**

Bespoke Handmade Kitchens & Furniture

Bespoke Handmade Cabinet Makers based in Lyminge, covering Kent and the South East.

Over 30 years experience in creating stunning solid wood kitchens and furniture.

Get in touch for any advice, recommendations and a free quote.

**Tel: 07832 360 603 or 07832 363 963**

**Email: [heaverlinch@outlook.com](mailto:heaverlinch@outlook.com)**

**Website: [www.heaverandlinch.co.uk](http://www.heaverandlinch.co.uk)**



Editor: [pbarnes20@icloud.com](mailto:pbarnes20@icloud.com)

22

Don't be led up  
the garden path...

...choose an agent  
that gives straight  
forward, honest advice.



Call today for a free, no obligation valuation

Bridge Office - 01227 831999  
[bridge@colebrooksturrock.com](mailto:bridge@colebrooksturrock.com)  
88 High Street, Bridge, CT4 5LB

Elham Office - 01303 840422  
[elham@colebrooksturrock.com](mailto:elham@colebrooksturrock.com)  
Bank Buildings, Elham, CT4 6TD

**[colebrooksturrock.com](http://colebrooksturrock.com)**



**Tel: 01303 863737**





## Lyminge Baby & Toddler Group

We are excited to welcome you to our local parent, baby and toddler group.

Please come along, meet new mums and dads for a chat and a play.

It costs £3.50 with tea and coffee provided along with snacks for your child.

Tuesdays, term times only. 10am to 12noon at the Tayne Centre.

First session is free.

Follow us on Facebook and Instagram.

Contact Ellen at 07870405567.

Early Years Education & Day  
Care for Children Aged 2-5

# LYMINGE Pre-school

Every Day Adventures  
at our **OUTSTANDING** pre-school

**COUNTRYSIDE SETTING**

**FANTASTIC FACILITIES & GARDENS**

**QUALIFIED & LONGSTANDING TEAM**

**WRAP AROUND CARE 8-5PM DAILY**

**HOLIDAY CLUB OUTSIDE OF TERM TIME**

**AFTER-SCHOOL CLUB**

**PARENT PORTAL**

Rated **OUTSTANDING**  
by OFSTED 2022 

We'd love to hear from you:

 **01303 863149**

 **LYMINGEPRESCHOOL@GMAIL.COM**

## Etchinghill Baby & Toddler GROUP

10.15-11.30am every Wednesday  
at Etchinghill Village Hall  
£2.50 per child

Come along to Etchinghill's Parent and Toddler group welcoming all pre-school children. We have plenty of toys and snacks for the little ones, and there is always tea, coffee and cakes for the adults. For further information call Ruth on 07817777975, look at Parent and Child Etchinghill Facebook page or email us as [parentandchildetchinghill@gmail.com](mailto:parentandchildetchinghill@gmail.com).



## My Clear Ears - Clinical Ear Care

*Practitioner with CQC registration and fully insured*  
**Appointments available for wax removal  
by microsuction**

**Wax removal £60 ~ Otoscopy £20 (Ear health check)**

**In the comfort of your own home!**

**Please call Collette on 07544586882**







## NURSERIES AND FOREST SCHOOL

*Bridging the indoor and outdoor learning  
environment for children in their early years*

Badgers Bridge has three sites, set in the idyllic countryside of Postling, Lympe and a Forest School in Lyminge. We are a small and friendly nursery, who blend the Montessori principles with the outdoor learning ethos.

### FIND US AT

-  Postling Village Hall, The Street, Hythe CT21 4EU
-  Lympe Village Hall, Aldington Road, Hythe CT21 4LE
-  Outward Bound at Lympe
-  Forest School in Lyminge

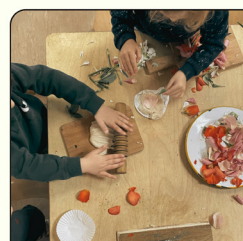
FROM 18 MONTHS TO  
5 YEARS

OPEN MONDAY TO FRIDAY  
8:30AM TO 3PM

GET IN TOUCH TO FIND OUT  
ABOUT AVAILABILITY AND  
MEET OUR LOVELY TEAMS

[badgersbridge@gmail.com](mailto:badgersbridge@gmail.com)

01303 862951







**With our excellent local knowledge & experienced staff we will get you moving**

✓ **Free** professional photography, property floorplan, Rightmove premium listing & social media advertising

**01303 863393**

The Estate Office,  
8 Station Road,  
Lyminge,  
Kent CT18 8HP

Follow us on  
social media



[www.laingbennett.co.uk](http://www.laingbennett.co.uk)

## ETCHINGHILL VILLAGE HALL HIRE FEES

The next time you are thinking of holding a function why not try Etchinghill Village Hall, which holds the highest Hallmark accreditation level (Hallmark 3), with its excellent facilities, including ample parking space.

The standard hire charge for the main hall and kitchen are:

ANY DAY OF THE WEEK ANY TIME £12 PER HOUR

No winter supplements. No extra charges.

Ideal for family parties and get togethers.

The use of a separate Committee Room is also available.

For all bookings or enquiries please contact:

**The Duty Manager on 07514 758936**

## The Lyminge Association

*We're here to support and develop our community!!*

### Contacts:

**Chair:** Peter Barnes 01303 863737 or 07808775302  
pbarnes20@icloud.com

**Treasurer:** Martin Fry 01303 863177  
martin@rhodesminnis.org.uk

**Minute Sec:** Heather Dunford

### Committee Members:

Marian Chubb, Richard Chubb, Dave Hunt-Cooke, Stephen Guyatt, Gillian Heywood, Robin Mackonochie, Derek Smith, Penny Stephens, Adrian Willcox, Bernie Wood

**Newsletter:** As for Peter Barnes above

**Editor:** pbarnes20@icloud.com

## Rhodes Minnis Village Hall

Charity No.800345

Rhodes Minnis Village Hall is located 2kms (1¼miles) from Lyminge and just off Longage Hill and Whitehorse Lane in Chapel Lane.

The hall, which holds Hallmark accreditation, is ideal for children's parties, band practice, quizzes, meetings, wedding receptions, fundraising events and much more. It has a fully equipped kitchen.

### Rates

Mon to Fri £18 per session £48 all day

Sat & Sun £23 per session

£33 for evening session and £69 all day

### Sessions

AM session 08.30 - 12.30

PM session 13.30 - 17.30

Evening session 18.00 - 23.45

Separate rates for Bank Holidays and New Year and special rates for regular users.

For all bookings and enquiries please contact:

**Mick & Dorothy Athow: 01303 862616**

**e-mail: booking-rmvh@outlook.com**



**Large hall with stage, new kitchen and flexible hire**

Excellent parking facilities, disabled access, proximity to playgrounds and playing fields. Beautiful countryside location.

### Capacity:

200 people dancing / audience seating, 100 with tables

Small rooms available for up to 50 seated

Find out how we can help you with your next event:

**BOOK ONLINE: [lymingevillagehall.org.uk](http://lymingevillagehall.org.uk)**

**EMAIL: [admin@lymingevillagehall.org.uk](mailto:admin@lymingevillagehall.org.uk)**

**INFO: 07525 909185**

Full pricing can be found on our website.

### Guideline prices:

Main Hall hire: £88.40 (Fri / Sat evenings)

£47.60 (Sat / Sun morning or afternoon)

Find us on Facebook

Registered charity 28145

## LYMINGE METHODIST CHURCH AND TAYNE CENTRE HALL HIRE



Church Seating Max 150

£20 per hour

Clayson Hall (with Stage) Seating Max150

£15 per hour

Rigden Room Seating Max 35

£10 per hour

Wesley Room Seating Max 15

£10 per hour

All rooms have use of kitchen, toilets and disabled toilet. With the exception of Wesley room, all rooms are disabled-friendly and accessible.

Contact Tel: 07716521405 Email: [maryeblanch@outlook.com](mailto:maryeblanch@outlook.com)

If you look at what you have in life, you'll always have more. If you look at what you don't have in life, you'll never have enough.- *Oprah Winfrey.*

You may say I'm a dreamer, but I'm not the only one. I hope someday you will join us. And the world will live as one.- *John Lennon.*

## Bus times

**To Folkestone town centre** via Etchinghill & Cheriton High Street  
From Lyminge, The Sidings

### MONDAYS TO FRIDAYS except Bank Holidays

There are route 17 buses at 0642, 0748, 0909, 0944, 1044, 1144, 1244, 1344, 1444, 1614 (schooldays only), 1619, 1704, 1804, and 1904.

### SATURDAYS

There are route 17 buses at 0749, 0844, 0944, 1044, 1144, 1244, 1344, 1444, 1544, 1644, 1744, 1844, and 1929.

On Mondays to Saturdays there are also route 18 buses to Sandling Station & Hythe - for times see our website or call the number below.

### SUNDAYS & BANK HOLIDAYS

There are route 17 buses at 1032, 1302, 1532 and 1802.

**To Canterbury city centre** via Elham, Barham & Bridge  
From Lyminge, Wesley Terrace

### MONDAYS TO FRIDAYS except Bank Holidays

There are route 17 buses at 0727, 0752 (school holidays only), 0903, 1003, 1043, 1143, 1243, 1343, 1443, 1613, 1733, and 1858.

### SATURDAYS

There are route 17 buses at 0742, 0842, 0943, 1043, 1143, 1243, 1343, 1443, 1543, 1643, 1743, and 1843.

On Mondays to Saturdays there are also route 18 buses to Canterbury via Stelling Minnis and Bissingham - for times see our website or call the number below.

### SUNDAYS & BANK HOLIDAYS

There are route 17 buses at 0903, 1133, 1403, and 1633.

These bus times apply from 25 September 2023.



0345 241 8000 @StagecoachSE  
customerhelpSE@stagecoachbus.com  
stagecoachbus.com

## Lyminge Library Opening Times

Monday 10am - 2pm  
Tuesday 12noon - 5pm  
Wednesday 10am - 2pm  
Thursday 10am - 5pm  
Friday 10am - 2pm  
Saturday 9am - 1pm

Tel: 03000413131 [lymingelibrary@kent.gov.uk](mailto:lymingelibrary@kent.gov.uk)



Soft Tissue Therapist

Specialising in Sports Massage and Deep Tissue Massage

Ohana Salon, 2 Culling's Hill, Elham, CT4 6TE (mobile services also available)

07808228770

[ellieminter.massage@gmail.com](mailto:ellieminter.massage@gmail.com)

[www.elliemintermassage.com](http://www.elliemintermassage.com)

@Ellie Minter Sports Massage



## DAVID HAIME

### ARCHITECTURAL TECHNOLOGIST

BUILDING TECHNICAL DESIGN  
AND CONSTRUCTION DRAWING  
SERVICES.  
PROJECT MANAGEMENT

BUILDING PLANS FROM PORCH TO NEW BUILD.  
PLANNING/BUILDING CONTROL/STRUCTURAL CALCS.  
COVERING KENT/SUSSEX/SURREY.

LYMINGE, KENT CT18 8HA  
TEL: +44 7974 156510  
EMAIL: D.HAIME@BTINTERNET.COM

Editor: [pbarnes20@icloud.com](mailto:pbarnes20@icloud.com)

## BOYKE MANOR COTTAGES

Family-run holiday lets that have been running for 12 years

**Are you looking for somewhere for a break or a longer stay?**

- Two cottages available in the Elham Valley (Ottinge)
- One sleeps 6 and the other sleeps 4
- Can be let individually or together
- Fully equipped holiday cottages rated as 4 star

Provides relaxing holidays in a peaceful rural setting, close to the coast and with a wide range of places to visit in close proximity.

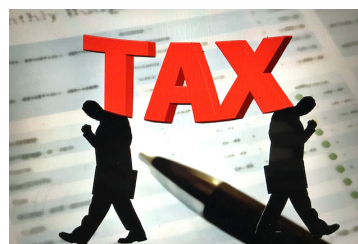
Ideal for a family getaway/holiday or short stays in between house purchases/whilst renovations are being undertaken.

Much more economical than hotels and the accommodation offers very high standards.

**For further details, contact Paul on 07860 452640 or visit [www.boyke-manor-cottages.co.uk](http://www.boyke-manor-cottages.co.uk)**

**Why do they call it rush hour when nothing moves?"**

**- Robin Williams**



Based in Etchinghill, I provide a personalised service with a one-off, flat fee of £180 to prepare & submit your Tax Return. No hidden costs.

FMAAT Licensed Accountant, fully insured and HMRC-authorised.

**Contact Anita: 07361 238744 or [aabookkeepingservicesaadams@gmail.com](mailto:aabookkeepingservicesaadams@gmail.com)**



- Carpets Supplied & Fitted
- Carpets Professionally Cleaned
- Carpets Whip Edged & Cotton Bound

Whatever your carpet need, give us a call for a **FREE** estimate / assessment.

Over 50 years combined experience.

**07943 764 442**

Email: [kingdom.carpet.co@gmail.com](mailto:kingdom.carpet.co@gmail.com)



- Gas & Oil Boilers
- Central Heating
- Hot Water Systems

01303 901070

[service@georgemiller.co.uk](mailto:service@georgemiller.co.uk)

248 Cheriton Road,  
Folkestone, CT19 4DN



[georgemiller.co.uk](http://georgemiller.co.uk)

Tel: 01303 863737



## Financial Planning

**David Gridley - Chartered Financial Planner**

Range of quality advice from a fully qualified adviser:

- Pre- and Post-Retirement Planning
- Investment Planning
- Inheritance Tax Planning

For further information, please contact our Lyminge office

David Gridley FPFS

Tel: 01303 863959 Email: davidgridley@sjpp.co.uk

## Ashman Consulting Ltd



**Straightforward I.T.**

**Advice  
Training  
Solutions  
Support**

**Steve Ashman  
07702641981**

**info@ashman-consulting.co.uk**

**MWH**

*window and gutter cleaning service*

**Mark Haley**

Lyminge and surrounding areas

For a free no obligation quote, please contact me

**Mobile: 07738 479202**

**Home: 01303 863 702 Email: haleymark161@gmail.com**

Find us also on Facebook



## T. Metcalfe Fencing Contractors

Approved Expert Installer for Jacksons Fencing

Established over 30 years

Fully insured - Highly experienced teams



Panel fencing, gates, decking, pergolas, post & rail, stock fencing, security, landscaping & tree surgery.

**01303 840201 07790 290 155**

metcalfefencing@btinternet.com

Proprietor - Derek Burr,  
Ash Ridge House, Elham



## Fincham Plumbing & Heating

We specialise in bathroom remodelling, including all tiling & pipework

Natural gas boiler servicing, Installation, Maintenance, Repairs, Replacement

All your plumbing requirements

Martin is a Qualified Plumber & Gas Engineer with over 30 years experience

Gas Safe, CIPHE, WIAPS registered

**Rosemary & Martin Fincham**

**07835 851 706 martinfincham@sky.com**



**Lou Lloyd**

**Carpenter**

**loulloyd@rocketmail.com**

**07984 426214**

Kitchens, Flooring, Wardrobes,  
Doors, Decking and more!

**HAND MADE CURTAINS,  
ROMAN BLINDS & SOFT  
FURNISHING**

**CURTAIN ALTERATIONS**

**TEL: VALERY WREN 0781 1563512**



**D & S DOUBLE GLAZING SERVICES**

01303 863689 - 07912317915

We are a local company that specialise in double glazing repairs offering a wide range of service's that include: Replacement double glazed units - Locks - Hinges - Handles - Rubber Seals - Gaskets.

For a free estimate please call: 07912317915 or 01303 863689

or email: dsdoubleglazingservices@gmail.com



**CEDAR TREE CARE** City & Guilds NPTC

All types of tree work undertaken

Crown lifting, crown reductions,

dismantling and removals, hedge maintenance,

pollarding, stump grinding and removal, mobile saw milling,

wood land maintenance, all year round seasoned logs available

Fully insured and NPTC qualified with over 15 years experience

**Call Tom: 07769 908027 email: lynchlogs@gmail.com**

**SPEARPOINT**  
TREE SERVICES

All Aspects of Tree  
Work Undertaken  
NPTC Qualified  
Fully Insured  
Please call **Shane** for  
a Free Quote  
**07963 203564** or  
**01303 621992**

## B.M. Plumbing & Maintenance Services

**Local Lyminge Tradesman**

Plumbing and heating works. Complete bathroom install including tiling. General building maintenance undertaken. No job too big. No job too small.

Cheaper rates for senior citizens

**07890854128 Benmillsplumbing@hotmail.co.uk**



FULLY INSURED

Dog training and Pet care services

- Puppies from 12 weeks old
- Kennel Club Good Citizen Dog Scheme Puppy through to Gold
- 1-2-1 home-based puppy training also available

**Lyn Fagg 07866 234820**

- Other pet care, dog walking and day cover available
- Other fun classes available - ask for details

**Email: Elhamdtc@gmail.com**



FULLY INSURED



## Snippers and Clippers Barbers - Lyminge

Please call Richard for availability on  
**07522 494969**

*Appointments not always necessary*

4 Station Road, Lyminge CT18 8HP



## DILTON MINI SKIP HIRE

Ballast, Hardcore, Sand  
and Topsoil Supplied

REGISTERED WASTE CARRIER

**01303 812448 or 07799 433754**

## Red Dragon I.T. Ltd.



- Windows, Mac & Linux Systems
- PC Health Checks
- Wired & Wireless Networks
- Website Design
- Graphic Design

T: 01303 723456 | E: info@rdit.co.uk | www.rdit.co.uk  
The Old Granary, Hanover Mill, Church Rd, Mersham, TN25 6NU

*'Helping you enjoy your garden'*

## CRT Gardening

All general garden and major landscaping redesign work will be undertaken including: full or minor garden design, hard and soft landscaping, new fencing and decking installation and repairs as we are Jacksons Fencing approved installers, hedge trimming and cutting, small to medium tree work.

For a free quotation call or text Karl Dodd on 07967 442518  
or email karl.dodd@live.co.uk  
Fully Insured



**ROBERT KENT** Cert. fp  
**FUNERAL DIRECTOR**

**Direct  
Cremation**

**£999**

**Fair Priced  
Cremation**

**£1950**

**ONE FIXED PRICE INCLUDING  
ALL CREMATION FEES**



**01303 684062**

**RKFUNERALS.COM**

## Computer support & repairs by local people

*Customer service is our priority*

- \*Remote IT support for business or home
- \*New & refurbished sales
- \*Call-outs for business or domestic users
- \*Preventative maintenance & upgrades
- \*Repairs to most phones, tablets & devices

**enquiries@thecomputerpeopleltd.co.uk**



Church Approach,  
New Romney,  
TN28 8AS  
01797 363385

## Andy Mannering Flooring

SPECIALISING IN AMTICO AND  
KARNDEAN LUXURY VINYL TILES

- Also safety flooring, rubber flooring, etc.
- Commercial and domestic work undertaken
- No job too small
- Free estimates and advice given
- Over 35 years experience
- Fully insured



**Telephone:** 0797 434 7248 or 01303 863095

**Email:** info@andymanneringflooring.com

Please visit my website for further information and feedback

**www.andymanneringflooring.com**

## Rhodes Minnis Cat Sanctuary



REHOMING & BOARDING CATTERY

- Our Sanctuary takes in and rehomes 250 unwanted cats and kittens each year. A variety of cats are always available to suitable homes.
- 5\* Boarding Cattery under 2018 regulations
- We are open to visitors every day from 10am-1pm & 2-4pm. No appointment needed.

T: 01303 862 243

E: rminniscats@gmail.com

Facebook: @rhodesminniscats

www.rhodesminniscatsanctuary.com

Seathwaite, Green Lane, Rhodes Minnis, Kent. CT4 6XU  
Reg. Charity No. 262245



Hawkinge

## Veterinary Surgery

Independently owned veterinary surgery for all types of small animals.

Opening hours: Monday to Friday 08:00-19:00 Saturday 08:30-13:00

24hour emergency service

**TEL: 01303 764190**

Hawkinge Veterinary Surgery, 9b Defiant Close, Hawkinge CT18 7SU  
**www.hawkingevetsurgery.co.uk**

## SCRUBBERS - Est. 1988

THE HOME AND COMMERCIAL CLEANERS

One off, regular or moving day 'Blitz'

Oven cleaning - Ironing

Carpet cleaning and more...

For a friendly and reliable service

Free Estimates

**Tel: 01303 249288 or 07834 128671**



**Acrise Electrical Services Limited**

**Design - Install - Maintain**

Tel: 01303 656007 Mob: 07803 421240

Email: info@acrise-electrical.co.uk

Website: acrise-electrical.co.uk

*Domestic, commercial, industrial & agricultural electricians serving the Elham Valley and surroundings.*

## Tressenden Designs

A seamstress and costume maker with 8 years of experience.

- ♦ Clothing alterations ♦ Repair work undertaken ♦ Made-to-measure; create a bespoke piece for those special occasions
- ♦ Modern and vintage designs ♦ Costumes, ball gowns and wedding dresses

For more information or a quote please contact Amy on: **Mobile: 07853 202304 Email: amy.louise.ford@hotmail.co.uk**







**T.M. GRIGGS**

01303 489795 07854 098395  
tobystreesurgery@gmail.com



**Garden Clearance - Turfing - Hedge Cutting  
Tree Work - Stump Grinding - Fence Repair**

## FRESHLOOK GARDENS

Regular lawn mowing service. Garden design. Hard and soft landscaping. General garden work, fencing and decking. Turfing hedge cutting, small and medium tree work. Water features, ponds and patios.

For free quotation ring **Danny Scott**  
**01303 242140** or **07795510093**  
mrdanscott89@gmail.com

Established since 1990. Fully insured.

**DYNO-ROD**



We've been  
unblocking  
sinks, drains  
& toilets  
in Kent  
since 1965

- Quick Response
- CCTV Drain Inspections
- Drainage Repairs
- Pre-purchase Surveys

For a FREE no obligation quote  
contact Mark or Peter on:

**01233 621108**  
**07557 616630**

## THE HANDY FELLOW



**A TRUSTED LOCAL SERVICE  
CALL 07534485049**

**ONE.HANDY.FELLOW@GMAIL.COM**

## Computer Repairs

01303 241325  
07968 129902

PCs, MACs, Laptops, Tablets & printers,  
Upgrades & Repairs, Internet & Email, virus removal,  
Office Setup, Backup & Recovery & much more ...  
Tuition available by a qualified tutor.

Usual Fee £55

Web sites built & hosted from £10 per month

See [www.computers-in-lyminge.co.uk](http://www.computers-in-lyminge.co.uk) for details



General Landscaping Including  
Fencing • Turfing • Paving

**Gavin Allfree**

T 07495 299711 E [gavinallfree@gmail.com](mailto:gavinallfree@gmail.com)

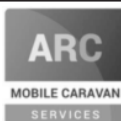


**Alan Croucher**  
**Caravan Engineer**

**07921 480919 - 01303 863194**

**Caravans & Motorhomes "WE COME TO YOU"**  
[www.arcmobilecaravanservices.com](http://www.arcmobilecaravanservices.com)

*"Your manufacturer's warranty is safe in our hands"*



Local Tradesman

**J Tappenden**

Established over 40 years ago

Painter/Decorator

**01303 862467**

**077755 78008**



## Hamilton Windows & Doors

*New joinery, restoration, double glazing of old and  
existing timber windows*

Bring your windows and doors back to life and get rid of  
cold draughts, or replace them with beautiful new ones.  
Joiner/carpenter with many years of experience.

Based in Lyminge, please feel free to call for more information.

**07792901266** [Alex\\_b\\_hamilton@live.co.uk](mailto:Alex_b_hamilton@live.co.uk)

## Jackson Plumbing Property Maintenance

*Complete bathrooms and tiling  
No job too small. Special rates for OAP's.*

**Telephone: home/evening 01303 270691  
or daytime 07773 089398 or 07864 929826**

## Trevor Law Electrical Installations



Serving Elham Valley for 30 years  
Part P Registered

**07850 970087**

## Ralph Allard Chimney Sweep



All chimneys, boilers and stoves swept.  
Brush and Vacuum. Certificates issued.  
HETAS and NACS registered, fully insured.

Member of National Association of Chimney Sweeps

**01303 844465 or 07813716654**



**JBS  
BUILDERS**

Specialising in Brickwork, Fencing, Landscape Gardening. Tree work undertaken (lopping,  
felling and clearing).

General household repairs, painting, plastering, power jetting & cleaning.

No job too small!!! All work guaranteed and insured.

**For free advice and quotations please call: 07825 168010/ 01303862361 (anytime)**





**APX PROJECT  
MANAGEMENT**

From design to build, we use trusted quality trade professionals along with reliable suppliers to ensure budgets are met, with high standards maintained. If you're looking to –

- Extend your property
- Carry out an external or internal refurbishment
- Convert an existing building into a new dwelling

Please contact: paul@apxprojectmanagement.co.uk 07487 364155

## Auto Economy Centre

**Fully equipped Mechanical Repair & Service Centre**

**With the latest diagnostic equipment**

**Half price MOTs when booked with any service**

**01303 863656**

**Orchard Garage, Canterbury Rd, Etchinghill**

**www.autoeconomycentre.com**

**Gosbee  
LANDSCAPES**

FENCING | GATES | PAVING | RESIN BONDING

- Over 35 years experience • Jacksons Approved Installer
- Marshalls approved • Check-a-trade registered

Call Martin Gosbee: 07974 835 511 | 01303 863 337

GOSBEECONSTRUCTION@GMAIL.COM  
GOSBEE.CO.UK



**KW CONSTRUCTION**  
PLASTERING & RENDERING SPECIALIST

ALL GENERAL BUILDING INCLUDING:  
ROOFING, BRICKWORK, TILING, PATIOS,  
LANDSCAPING, SCREEDING, GROUNDWORK,  
DRAINAGE, EXTENSIONS, RENOVATIONS,  
REPAIRS & MAINTENANCE.

30 YEARS EXPERIENCE, COMPETITIVE RATES,  
A FULLY INSURED, PROMPT & RELIABLE  
HIGH QUALITY LOCAL BUILDER

KENNY 07743488361

## LYMINGE FOOD & WINE

**01303 862225**



Our new opening times are:

Mon – Sat 7:00-20:00

Sunday & Bank Holidays

8:00 - 19:00

PayPoint

**POST  
OFFICE**



We offer National Lottery, ATM terminal,  
Post Office & PayPoint services.

## Park House Sanctuary Boarding Kennels & Cattery

**Park House, Stelling Minnis CT4 6AN**

Brick-Built Heated Kennels. Daily Walks ~ Reasonable Rates

Dogs must be fully inoculated. Heated Cat Chalets

Quiet Area Inspection Invited.

To book or for further information, call 01303 862622

or email lord.whisky@btinternet.com

www.lordwhisky.co.uk



**Dennis Huntley  
Chimney Sweep**



Wood burners and multifuel stoves installed

Hearths and fireplaces built & installed

Over 40 years' experience

**01303 862 343 • 07850 784 365**

dennis.huntley@talktalk.net • www.dennishuntley.co.uk



## AIR LINK CARS

(You pack up, we pick up)

Airport, Seaport & Long Distance Travel Specialists.

The Family Run Business where service really counts

Estate cars and People Carriers



Fixed price 24hrs a day. No extras.

Written Confirmation of booking.

For the Easy Airport Link, Think AIR LINK!

**01303 670370 - 07766 824 474**

airlinkcars@yahoo.com

## D.W. Garden and Mini Digger Services

**Mowing, Fencing, Hedge Cutting,**



**Chainsaw Work, Turfing**

**Free Quotes**

**Contact David 07765789721**

**HANDYMAN  
SERVICES**  
SJW

www.Facebook.com/sjwoodhandyman  
www.Instagram.com/sjw.handymanservices  
**07796 384857**



**AK Healthcare**  
Registered Osteopaths

Tel: 07904311554 /

07980897382

www.akhealthcare.org.uk

As osteopaths, Adam and Katie can help patients suffering from a wide variety of conditions including arthritic pain, circulatory problems, frozen shoulder, back pain, sciatica and much more. Please visit our website or give us a call for more information.

**AK Healthcare,  
Garden Suite,  
4 Station Road, Lymping**

## South East Aerial & Satellite Solutions

**Digital – Freeview – Satellite – Aerials**

Supply and fit of quality digital installations, FREEVIEW, SKY, aerials, poor reception and problem solving, upgrades and repairs by fully accredited engineers

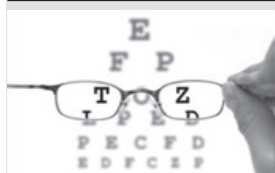
Free quotations and advice, fixed prices, fully insured

**Freeview**

**NO CALL-OUT CHARGE**

**07825 168010 - 01303 862361**

**freesat**



## HOME VISITING OPTOMETRIST - providing professional eye care in your home

If you are over 60 years of age and no longer able to get out on your own, then you are eligible for a NHS sight test in your own home. Please call to arrange an appointment:

**Elaine Edwards BSc(Hons)MCOptom 01303 840541**

Registered with the General Optical Council (01-15421) Member of the College of Optometrists Member of the Association of Optometrists



## D.M.B. Plastering

All aspects undertaken  
Interior. Exterior. Plastering. Rendering.  
Coving. Ceilings. Wall. Floors  
Finest quality assured. CSCS Certified.  
30 years experience.

Free estimates. Reliable service. Fully insured.  
Call **David** on **07818 607209**



## Sunhouse Electrical

Your local reliable Electrician  
Part P Registered & Elecsa Approved  
On Electrical Safety Register & Fully Insured  
For a free quotation call James on  
**01303 766333**

[www.sunhouse-electrical.com](http://www.sunhouse-electrical.com)

## KJB GARDEN SERVICES

Weeding, Pruning, Mowing, Hedge  
Cutting & General Maintenance  
**01303 862181 or 07704 989 402**  
**Over 35 years experience**

House Clearance covering South East Kent.....and beyond!  
**CAROL CREES CLEARANCES**



- Est. over 30 years  
Full/part house clearance  
Fair prices paid  
Antique/Vintage/Retro/Modern  
Registered rubbish carrier

Contact **Simon Cullen** on **07745 421680** or [sijnzo@aol.com](mailto:sijnzo@aol.com)

Total garden care for all your needs

## TIM MILLETT

Grass Maintenance, General Gardening, Small & Medium  
Size Tree Work, Stump Grinding and Wood chipping  
Fencing Repairs & New Installations  
Turfing, Hard & Soft Landscaping  
Free Estimates - Fully Insured

**07752 880583**

Email: [info@tmhorticulture.co.uk](mailto:info@tmhorticulture.co.uk)

## N.P.C.

### Domestic Appliance Services

Service and repair of washing machines, tumble driers,  
dishwashers, cleaners and small electrical work.  
For a prompt and friendly service

Call Neil Collard 01303 892234 or 07798716044  
or Google me on Yell.com

## Ewin Electrical

Contact Simon for any electrical maintenance, refurbishments or  
upgrades with a friendly, clean and professional approach to work  
**07891103065**

[info@ewinselectrical.co.uk](mailto:info@ewinselectrical.co.uk) [www.ewinselectrical.co.uk](http://www.ewinselectrical.co.uk)



## SNIPPERS & CLIPPERS

UNISEX HAIR SALON



APPOINTMENT NOT ALWAYS NEEDED



WEDDINGS & SPECIAL OCCASIONS



SHELLAC NAILS



GENTS WELCOME



FREE WIFI



4 Station Road, Lyminge  
Folkestone  
Kent, CT18 8HP



**01303 647 222**



[info@snippersandclippers.co.uk](mailto:info@snippersandclippers.co.uk)



Find us on  
Google+

Find us on:  
facebook



## East Kent Foot Care

[www.eastkentfootcare.co.uk](http://www.eastkentfootcare.co.uk)



## 07745 532075 Podiatry, Chiropody, Foot Health

Treating and managing foot  
and nail conditions, corns,  
callus, insoles, ingrown nails,  
diabetic foot care



## hughes electrical

## Your Local Electrician For all your electrical needs

- 18th Edition/Part P Registered
  - Insured & all work guaranteed
  - All electrical work carried out including EV charging points
  - Covering Lyminge, Etchinghill & surrounding villages
- Call for a free, no obligation quote and to discuss your  
electrical requirements.

Proud members of  
**Checkatrade.com**  
Where reputation matters



**07878 457018**

**01303 814372**

[info@hughes-electrical.co.uk](mailto:info@hughes-electrical.co.uk) [www.hughes-electrical.co.uk](http://www.hughes-electrical.co.uk)

## JON DAUGHTERS - Local Builder

All aspects of general building works undertaken including: roofing, kitchens, bathrooms and small extensions  
**Trading for over 30 years Free quotes, no obligations, fully insured**

**Telephone: 01303 863371 Email: daughters777@hotmail.co.uk**



## LYMINGE THEN AND NOW

Our monthly look at how Lyminge has changed over the years, with thanks to Lyminge Historical Society.



These two views from the church tower were taken around 115 years apart. It is noticeable how many more trees Lyminge has now. The picture from around 1910 shows why we have the green space of Tayne Field. This used to be sheep pasture, and it remained so into the 1960s, long enough for people to appreciate what an asset such a large open space is for our community. The Parish Council then bought it so that it could be preserved for everyone.

The Coach and Horses has changed very little, as is true of the houses in the bottom right, though Wellfield and Kelowna, the pair of semi-detached houses in the corner of the picture, were brand new in 1910 and then known as numbers 1 and 2 Church Villas. Opposite them is the old village school, demolished in the early 1990s and replaced by Church Mews. In the older photo is a building that looks superficially like Church Mews, but this is the Forge and Forge Cottages on the corner of the High Street and Church Road, destroyed by the blast from the V1 flying bomb that devastated the Methodist Church on 31 August 1944. On the far side of Tayne Field is Kimberley Terrace, much more visible without the trees, and a big open space where the new village school was built in the 1980s. This field was the original Tayne Field. The path marks the boundary between Tayne Field and what was known in the 19th Century as Coach Meadow, apparently taking its name from the pub, which was known as the Coach and Horses long before the current building was constructed in 1888.



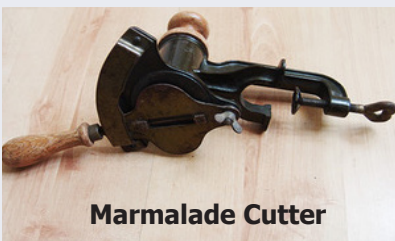
Derek Smith gave a very interesting talk on the Kent and Sussex Railway at the recent Lyminge Friends meeting.

(See P12 for more details)



Pick-Up-A-Plant - a recent free annual event allowing people to donate and/or 'pick up' excess plants donated by the community and organised by Thoughtful Food (see page 17)

### The answers to the Mystery Objects in May's newsletter



**Marmalade Cutter**



**Quoin** - a wedge used for locking a letterpress forme into a chase



# The Aurora Lights Visited Lyminge

## - 10th May 2024



Photographs courtesy of Sue Hope and Tony King



### Recent Updates to Etchinghill

- repaired signpost in the centre of the village
- following works to the drainage system and the road by KCC, there is finally no standing water and most of the potholes were repaired - except for the one in the photo outside the entrance to the golf course!
- the redesigned entrance to the golf course

