

THE LYMINGE NEWSLETTER

For the communities of LYMINGE, ETCHINGHILL, RHODES MINNIS and POSTLING

February 2024
From The Lyminge Association

Produced by
THE LYMINGE ASSOCIATION
www.lyminge.org.uk

Forthcoming Events being organised by The Lyminge Association

THE LYMINGE ASSOCIATION PRESENTS
OUR LOCAL BAND

**The
undecided**

Lyminge Village Hall
Saturday 23rd March 2024 7.30pm
Bring your own nibbles / Bar for drinks / Raffle
Tickets in advance £5 from Laing Bennett or £6 at the door

THE UNDECIDED

23RD MARCH

LYMINGE VILLAGE HALL
TICKETS £5 AVAILABLE
FROM LAING BENNETT
FROM 1ST MARCH

GARAGE SALE

6TH APRIL

BOOKING FORMS AVAILABLE
ON-LINE AND FROM
SNIPPERS & CLIPPERS
AND COFFEE CABIN FROM
1ST MARCH



**GARAGE
SALE**

with TABLE SALE

at Lyminge Village Hall

Saturday 6th April

LYMINGE QUIZ - 18TH MAY 2024 - LYMINGE VILLAGE HALL
MORE DETAILS NEXT MONTH

LYMINGE SHOWCASE - 1ST JUNE 2024 - LYMINGE VILLAGE HALL
MORE DETAILS SOON



In the interest of all pedestrians,
children and adults alike, please wear
HIGH VISIBILITY CLOTHING
when out on our roads at night,
especially on those roads that are poorly lit.

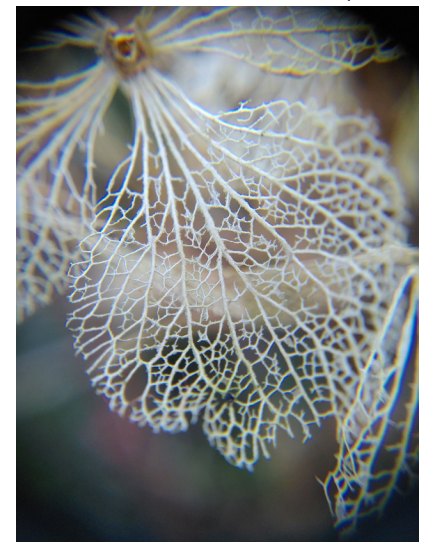


Margaret Saunders' Meanderings

Winter colour and texture turned out to be the theme of today's walk. I set off with no particular route in mind and no thought about taking notes, but as I walk along lanes and follow field hedgerows, I realize I am once again searching out colour in probably the most colourless of all months - January. The overriding muted colour scheme at this time of year is green and brown: greens from the evergreen trees and lichen, grass and ivy; browns from the earth, dead leaves, tree trunks and branches both living and fallen, and dried vegetation. So I realize I will have to look hard and diligently if I am to find colours other than these. With the sky a uniform leaden grey, I am not sure I will be successful but I press on, as cold wind tries to creep in behind collar and cuff.



On the point of ignoring the ivy, I notice that in a couple of places, small new leaves have formed at the tip of a tendril and these are plum coloured, the veins highlighted in bright green. Whilst looking closely at them, and searching for more, my eye catches clusters of ivy seeds, some plain green, others with red tops surmounting the rest of the stalk, purple and yet more a bright fresh green. Those still unformed are a pale yellow. A little further along a few bright pink spindleberries grace the hedgerow, but mostly these are now all dried up. Across the lane, swags of black bryony berries, bright, shiny and red in stark contrast to the plant's name, drape themselves up fence posts and along wires, or else tumble out of trees. Rosehips can still be seen, although not in the same profusion as in the Autumn months. Any hawthorn berries that remain are now dark red and few and far between, as birds have been feasting on them for many months. Filigree leaf skeletons, delicate as lace, lie in the leaf litter, waiting to be trodden on and crushed. Fence posts start to rot at the top and so these too, though long dead, have their own range of textures. Once their central core starts to disappear, seeds fall into the vacant space, germinate and begin to grow, providing further opportunity for the rot to continue.



Lichen sits on dogwood twigs, its bright acid green and celadon colours contrasting beautifully with the ruby red of the dogwood. The pattern of the lichen is fascinating when looked at close-to and never fails to attract my attention with its frilly ear-like shapes. Old man's beard combines silver and maroon, the former in its feathery wisps and the latter in its cluster of seeds in the centre, from which these wisps protrude, ready to carry each seed on the wind. Large copper coloured oak leaves cling on to some lower branches, the outer edges of the leaves turning grey with decay. At ground level, spiky steel grey leaves, curled and brittle, wait their turn to drop and finally disintegrate into the soil, enriching it with nutrients. Tiny buds are appearing on many trees and plants, some of which are bright red, as on the wild rose and some are pink or pale yellow. Rusty and crunchy are the seeds of fat hen, which is a member of the spinach family. Evidence of this plant was discovered in the stomach of a man preserved in a peat bog, 2,400 years ago.

Textures are more noticeable in the Winter months as everything else is pared back, giving seedheads the chance to display their delicate silhouette-like qualities or in other cases, their solid forms. Umbelliferous plants, such as hogweed and cow parsley, once flowered leave starburst seedheads. These are tall plants and therefore stand out more than those closer to the ground. Teasels too are tall and have very textured heads. Nipplewort is of medium height and has small elliptical seeds. Burdock has spherical seedheads with spikes coming out in all directions, that cling tenaciously to sheep's wool, and hence any soft clothing. Knapweed forms a distinctive plaid-like pattern on its onion shaped seedhead as do catkins in a smaller version and in a different colourway. Ivy berries explode outward from their centre, not unlike the spike proteins on the coronavirus. Wild carrot turns from an upturned umbrella shaped flower into a concave bird's-nest-like seedhead. Some I am not able to identify so next Autumn I will need to spend time observing flowers when they reach maturity and begin to make their seeds.



As the dawn light creeps into the eastern sky the following day, I look to the west where the setting full moon, misty and mysterious, continues its decent, shining weakly through a tangle of twigs and branches, which make their own striking silhouettes and textures.

Smooth, shiny, spiky, soft and rough - all these textures can be found in the hedgerows at this time of year and it is well worth the effort to seek them out.

Diary of Forthcoming Events

This page is printed to give readers and organisers the opportunity of planning events without clashing with existing ones, which are already in the 'diary'. It is not intended as a means of advertising and we take no responsibility for errors or omissions. Acceptance is at the discretion of the editor. Please send your updates by email to pbarnes20@icloud.com.plus.com or via methods outlined on Page 4.

Location and name codes below:

One-Off Events

Date	Time	Event	Where	Tel. No.	Date	Time	Event	Where	Tel. No.
06-Feb	10am	Digital Support	AUKL	269602	18-May	7pm	Late Spring Quiz	LVH	862928
08-Feb	12.30pm	Dementia Café	AUKL	269602	01-Jun	10.30am	Lyminge Showcase	LVH	
16-Feb	7pm	Magic Mike Movie Night	AUKL	269602	08-Jun	10am	Coffee and Cake Morning	PC	
09-Mar	10am	Coffee and Cake Morning	PC		13-Jul	10am	Coffee and Cake Morning	PC	
23-Mar	7.30pm	Dance to The Undecided. See P1	LVH	863737	10-Aug	10am	Coffee and Cake Morning	PC	
06-Apr	9am	Spring Garage Sale			14-Sep	10am	Coffee and Cake Morning	PC	
13-Apr	10am	Spring Litter Pick	EVH	07544 670363	12-Oct	10am	Coffee and Cake Morning	PC	
13-Apr	10am	Coffee and Cake Morning	PC		12-Oct	7pm	Autumn Quiz	EVH	07544 670363
27-Apr	7pm	Spring Quiz	EVH	07544 670363	09-Nov	10am	Coffee and Cake Morning	PC	
11-May	10am	Coffee and Cake Morning	PC		01-Dec	4.45pm	Christmas Lights Switch On	EVH	07544 670363
14-May	8.30am	Day Trip - RHS Wisley. See P5		07703149008	08-Dec	6.30pm	ERA AGM	EVH	07544 670363

Weekly Events

Day	Time	Event	Where	Tel. No.	Day	Time	Event	Where	Tel. No.
Mon	9.30am	Dementia & Me Unit	AUKL	269602	Wed	10am	Pilates	TC	07825109670
Mon	10am	Bridge Club	LBC	863177	Wed	10am	Baby/Toddler Group	EVH	07817777975
Mon	10am	Clear Ears	AUKL	269602	Wed	10.30am	Pilates	RMV	07944028445
Mon	10.30am	Lyminge Larks (Singing)	LMC	07951572920	Wed	11am	Singing For All (term time only)	AUKL	269602
Mon	10.30am	Chromatic Greys Art Class	EVH	07783575802	Wed ⁵	2pm	French Conversation	Call	862972
Mon	10.30am	Main Cog Stim Therapy (MCST)	AUKL	269602	Wed	7pm	Tayne Centre Circuits	TC	07925982995
Mon	1pm	Lyminge Knitters	AUKL	269602	Wed	7.30pm	Cantores Dominicae Choir	LVH	07840796383
Mon	5.30pm	Pilates	EVH	07951608008	Thurs	9.30am	Dementia & Me Unit	AUKL	269602
Mon	6.30pm	Ballroom/Latin/Salsa Dancing	TC	07966751991	Thurs	10am	Boxfit (non-contact)	AUKL	269602
Mon	6.30pm	Judo Club	LVH	862946	Thurs	10am	Lyminge Morning Art Group	EVH	01303211364
Mon	7pm	Pilates	EVH	07951608008	Thurs	10am	Carers' Brunch	AUKL	269602
Mon	7pm	Yoga	RMV	07977503897	Thurs	10.15am	Baby Rhyme Time	LL	03000413131
Tues	9am	Seated Yoga	AUKL	269602	Thurs	10.30am	COGS	AUKL	269602
Tues	9am	Tai Chi Qigong	EVH	07402203239	Thurs	11.45am	Streetz to Streetz (fish and chips)	AUKL	07955926835
Tues	9.30am	Dementia & Me Unit	AUKL	269602	Thurs	12.30pm	Dementia Café	AUKL	269602
Tues	10am	Lyminge Baby & Toddler Group	TC	07870405567	Thurs	2pm	Lyminge Afternoon Art Group	TC	07870494644
Tues	10am	Painting and Drawing with Clare	AUKL	269602	Thurs	3.30pm	Pilates	EVH	07944028445
Tues	10am	Pottery	AUKL	269602	Thurs	5pm	Pilates	TC	07951608008
Tues	10.30am	Poetry Group	LL	03000413131	Thurs	6.15pm	Pilates	TC	07951608008
Tues	10.30am	Cognitive Stimulation (COGS)	AUKL	269602	Thurs	7pm	Short Mat Bowls	LVH	863842
Tues	11.45am	Pilates	EVH	07834839801	Thurs	7.30pm	Ballroom and Latin Dancing	EVH	07967979610
Tues	1pm	Active Minds Club	AUKL	269602	Fri	8am	Chiropody (appointment only)	AUKL	269602
Tues	1.30pm	Pickleball	EVH	863819	Fri	9am	Pilates with Katherine	AUKL	269602
Tues	5pm	Pilates	EVH	07944028445	Fri	9.30am	Dementia & Me Unit	AUKL	269602
Tues	6pm	Board Games Night	Coffee Cabin		Fri	9.30am	Nikki Barratt Art Group	EVH	07870494644
Tues	6.45pm	Short Mat Bowls	LVH	863842	Fri	10.15am	Talk Time	LL	03000413131
Wed	8am	Pilates	TC	07951698008	Fri	10.30am	Main Cog Stim Therapy (MCST)	AUKL	269602
Wed	9am	All Day Breakfast	AUKL	269602	Fri	10.45am	Movement to Music	AUKL	269602
Wed	9.30am	Dementia & Me Unit	AUKL	269602	Fri	6pm	Junior Cricket Training Sessions	SPCC	07869283195
Wed	9.30am	Age UK Info & Advice – drop in	AUKL	269602	Fri	7pm	Table Tennis	EVH	

Monthly Events

When	Time	Event	Where	Tel. No.	When	Time	Event	Where	Tel. No.
1st Mon	2pm	RBL, Elham Valley Branch	Methodist Church, Elham	862508	1st Wed	10.30am	Lyminge Friends	TC	862598
2nd Monday	10am	Stroke Support Group	C&H	07903150099	Last Tues	10.30am	Lyminge Poetry Group	LL	03000413131
3rd Mon	7pm	Etchinghill Cinema Club	EVH	07544670363	4th Wed	2.30pm	RM Circle	RVH	862913
4th Monday	10am	Stroke Support Group	C&H	07903150099	Last Wed	7.30pm	Quiz Night	C&H	01303901011
Last Mon		Parish Council Meeting	SNL	07715221705	4th Fri	7.30pm	Beetle Drive	RVH	862616
1st Tues	2pm	Library Reading Group	LL	03000413131	2nd Sat	10am	Postling Ch. Coffee Morning	PC	863536
1st Tues ³	7.30pm	LHS Talk/Event	TC	863879	2nd Sat	10am	Ethelburga Quilters	EVH	
2nd Tues	2pm	Library Reading Group	LL	03000413131	4th Sun	10am	Farmers' Market	LVH	
3rd Tues ²	7.30pm	Gardeners' Society	TC	07703149008	Last Sun**	10am	Springrise Canine Care Pet	EVH	07582407637

¹ In term time only ² Except Jan and Feb ³ Except Jan, Feb, and trip in Aug ⁴ Except Aug and Dec ⁵ Not held in August ** Every three months

AUKL Age UK Lyminge; **C&H**: Coach & Horses; **EVH**: Etchinghill Village Hall; **ELVH**: Elham Village Hall; **ERA**: Etchinghill Residents' Association; **ES**: Elham Square; **EVLT**: Elham Valley Line Trust; **JF**: Jubilee Field; **KH**: Korf House; **LB**: Laing Bennett; **LBC**: Bowls Club; **LL**: Library; **LMC**: Lyminge Methodist Church; **LPC**: Lyminge Parish Church; **LPS**: Lyminge Primary School; **LVH**: Lyminge Village Hall; **LW**: Lord Whisky; **NP**: Nailbourne Court; **PC**: Postling Church; **PH**: Lord Whisky, Park House; **PVH**: Postling Village Hall; **RVH**: Rhodes Minnis Village Hall; **RMC**: Rhodes Minnis Church; **RMCS**: Rhodes Minnis Cat Sanctuary; **RR**: Rigden Room; **SMVH**: Stelling Minnis Village Hall; **SNL**: See Newsletter for info; **SP**: Sibton Park; **SPCC**: Sibton Park Cricket Club; **TC**: Tayne Centre; **TF**: Tayne Field; **WF**: Well Field



St Mary and St Ethelburga Parish Church, Lyminge

Sunday 4th February

Lyminge 10am WOW Service
Paddlesworth 6pm Evensong, BCP

Sunday 11th February

Lyminge 8am Holy Communion, CW2
6pm Choral Evensong

Wednesday 14th February **Ash Wednesday**

TBC 7pm Benefice Ashing Service

Sunday 18th February

Lyminge 10am Holy Communion, CW1
Paddlesworth 6pm Evensong

Sunday 25th February

Lyminge 10am Family Praise

Sunday 3rd March

Lyminge 10am WOW Service
Paddlesworth 6pm Evensong, BCP

Merciful Father, we remember everyone caught up in warfare, especially between Russia and Ukraine, across Africa, in the Middle East and Afghanistan. We long to see an end to violence, destruction and the suffering of millions of displaced people. Please restore peace, healing and hope. Amen.

**If more information is required please contact the Church Wardens,
Derek Smith 01303 862508 or Mike Chinneck 01303 863911**

Lyminge Methodist Church

A warm welcome awaits you at the following services to be held at **11am**, followed by a time of refreshment and fellowship.

4th February Rev. Gill Songer (incl. Holy Communion)

11th February 10.15am Valley Service at Rhodes Minnis

18th February Rev. Malcolm Peach

25th February Local Arrangement

Rhodes Minnis Chapel

A warm welcome is extended to anyone who wishes to join us for the following services at 9.30am in our small and beautiful Chapel and to share fellowship after the services over coffee and biscuits.

4th February Rev. Gill Songer (incl. Holy Communion)

11th February 10.15am Valley Service at Rhodes Minnis -
Rev. Gill Songer

18th February Rev. Malcolm Peach

25th February Mrs. Keeley Taylor

Postling Church Services

4th February 9.30am Holy Communion

11th February 5pm Tea Service

18th February No service in Postling

25th February 8.30am Breakfast Service

Lyminge Newsletter

Terms & Conditions: Copy deadline for next edition - 18 February 2024

Please email your copy to the editor (pbarnes20@icloud.com). Your payment must be received before your article or advert can appear in the Newsletter. Invoices will be issued and should be paid ASAP either by BACs, cheque, credit card or cash (details on invoice). **Business adverts** cost from £9.50 per month or £95.00 per year. **Personal and charity adverts and articles** from £3 per month, or £30.00 per year. The annual rate offers 12 entries for the price of 10. Please make cheques payable to **'The Lyminge Association'**. If you do not have email, a typed paper-copy may be left with the payment at the Library. Newsletter is printed by Canterbury Print & Mail.

Lyminge Association accepts no liability for the accuracy of the advertisements or subsequent actions arising in conjunction with advertisers in the newsletter.

Further details from Peter Barnes (editor) on 01303 863737 or pbarnes20@icloud.com

Etchinghill Update - February 2024

ETCHINGHILL RESIDENTS' ASSOCIATION (ERA)

Chairman: David McCombe - 07939 076617 E-mail: dmccombe1@gmail.com
Website: www.etchinghill.info Facebook: Etchinghill Residents

FILM NIGHT - MONDAY 19 FEBRUARY - ETCHINGHILL VILLAGE HALL - "A HAUNTING IN VENICE" 12

. Crime / Drama / Mystery, starring Kenneth Branagh, Michelle Yeoh and Jamie Dornan. Based on Agatha Christie's 1969 novel "Hallowe'en Party", Poirot is now retired and living in his own exile in post-World War II Venice. He reluctantly attends a séance and when one of the guests is murdered it is up to the former detective to once again uncover the killer. The entry fee is only £6 pp and includes a glass of wine, tea or coffee with biscuits and entry into a free raffle. New members are welcome, simply register and pay on the night - no need to book.

NB THIS IS A CHANGE TO OUR RECENTLY PUBLISHED PROGRAMME. We had intended to screen 'Jules' but are unable to source a Region 2 (UK/Europe) version of a DVD at present. We hope to screen 'Jules' at a later date. Please ensure you visit our website for up to date information regarding Film Nights.



TRAFFIC ON WESTFIELD LANE

There is much concern about the increased volume and speed of traffic along Westfield Lane and some residents would like to discuss speed restrictions with the Parish Council. If you have any concerns but haven't had a chance to express them yet, please contact Roger Joyce (email address below). This website may be of interest: <https://www.kent.gov.uk/roads-and-travel/what-we-look-after/roads/changing-roads-in-your-area>

Work is currently being done on the Neighbourhood Plan so please contact him soon. There is a Parish Council meeting on Monday 12th February at the Tayne Centre and residents are welcome to attend.

Roger Joyce, Councillor: roger.joyce@lymingeparishcouncil.org.uk

A big thank you to **Colin Manvell** who has organised the carol singing at **The Gatekeeper** on Christmas Eve for the last few years. Carol Charman has kindly offered to take over and will be organising the next one, for Christmas 2024.

News contact: Jacqui Blandford – 07543 966830 or email: jacqui.blandford@gmail.com



I am retiring as a volunteer Brownie Leader this Summer.

Lyminge Brownies have been in the village since 1968 and I would love them to continue.

New adult volunteers are urgently needed, or the unit will have to close ...

It's about an hour and half a week helping girls have non-stop Fun, Learning and Adventure.

Full support given. Please phone 01303 862073 Angela - Barn Owl

The Spring Clean of the Nailbourne..

....which was originally scheduled for the 13th April is now being run by the Lyminge Scout Group who are in the process of rescheduling and modifying the event. More details next month.



Hythe Aqua Swimming Club has vacancies for potential competitive swimmers Level 7 and above. Join a Club with a nationally accredited swim programme.

Lessons/Coaching sessions are held on Tuesday & Thursday evenings at Hythe Pool.

We also welcome adult length swimmers to our Adult training on Tuesdays & Thursdays at 9.00pm

To book your place

Email: hytheaqua@btinternet.com or checkout our website: www.hytheaqua.org.uk or [F/book](#)

FANCY A DAY OUT



RHS

Garden Wisley

The Lyminge Gardeners' Society is organising a coach trip to Wisley Gardens on 14th May. They have spare capacity and are willing to extend the invitation to the wider community if there are still spare seats.

So it is very much on a first come, first served basis. The cost to non-members is £30 (entrance included). There is a £10 non-returnable deposit to be paid as soon as possible. The coach picks us up in Lyminge at 8:30am and returns from Wisley at 3:30pm, arriving back in Lyminge around 5pm.

So if you are interested, you can book either via Anne Gould on (07703) 149008 or email lymingegardeners@gmail.com

District Councillors' Update - February 2024

Budget - Work has continued on the 24/25 budget which will be voted on by the full Council on 18th February 2024. Whilst the District Council was left in a good financial situation when the new administration took over in May, inflationary pressures have put all Councils under financial pressure which will require increases to Council tax and fees broadly in line with inflation plus some possible cuts to non-statutory services. Whilst I accept and support the need for some increases I am personally opposed to proposals to cut back on street cleansing and reduction in waste bins around the District as I feel these will ultimately lead to additional costs in dealing with fly tipping and a general deterioration on the appearance of the District which was one of the top objectives of the previous administration. There is also a proposal to reduce the number of verge cuts during the course of the year.

'All Saints' Stanford Church – At the last meeting of the Stanford Parish Council I agreed to check the situation with regard to the closing of the church. As I am sure you are aware, Rev Stephen Dougal has confirmed in a letter to 'Stanford Matters' that this is not the case.

Constitution – The Leader of the Council is putting forward a motion to the full Council on 24 January 2024 to delay the implementation of the Committee system until May 2025. If the motion is agreed, it will mean that the Cabinet system of governance will continue for the next year.

Otterpool Park PLC – there has been no update on a strategic partner over the Christmas period.

Stelling Minnis Windmill – At Stelling Minnis Parish Council Meeting on 8 January, Councillors agreed to nominate the Windmill as an asset of community value and will ask for it to be added to FHDC's register. This means it will be subject to additional protection from development.

I attended the Parish Council Meeting on 8 January.

Contact jenny.hollingsbee@folkestone-hythe.gov.uk Mobile 07887918458

F&HDC have recently issued two Article 4 directions on the landowners in respect of land at Longage Hill, Lyminge, to remove specified permitted development rights. Officers became aware that part of the land was being auctioned in mid-December and it appears from the sales particulars that ownership of the land has been subdivided. In this instance, there are at least 30 small plots shown on the land registry details. Using permitted development rights, each plot could be enclosed by a fence of up to two metres in height. An Article 4 direction is a protection instrument, in this case it is being used to protect the visual amenity of the Kent Natural Landscape (AONB).

I attended the community meeting to discuss the Davidson Mill. The windmill along with 7 others is proposed for disposal by KCC. I, like many others, including other District Councillors from outside the ward, expressed deep concern at the potential disposal of this heritage asset (Grade 1 listed). Subsequently, I completed the KCC consultation questionnaire expressing my deep concern.

Otterpool Park is progressing well. The new Managing Director, Gary Ridgwell, has restructured the team and is making good progress in remodeling and programming the development. Prior to Christmas we received the good news from SE Rail that Westenhangar Station would become a stop on the high-speed route.

Contact elaine.martin@folkestone-hythe.gov.uk



ETCHINGHILL RESIDENTS' ASSOCIATION

Film Night

'A Haunting in Venice'¹²

Monday 19th February 2024

Etchinghill Village Hall - 7 for 7.30pm

Entrance Fee £6pp

Open to new and existing members

Free Refreshments and Raffle

www.etchinghill.info

Editor: pbarnes20@icloud.com

SPRING MEDITATION COURSE

Next Course

Commencing Saturday 2nd March
Ending Saturday 27th April 2024

10am – 12.30pm

For 8 Sessions

Location: The Committee Room, Lympe Village Hall
Learn some wonderful skills to keep your mind fit and to help support your health and wellbeing during these difficult times.

For more information and to book a place,

contact Ellen:

Tel: 01303 230604 or 07740 857109

Email: ejgarrard2712@gmail.com



Rhodes Minnis Circle

After a very enjoyable Christmas Party and a break in January we hope to be fit enough to get our brains into gear for a Quiz on the 28th February. The competition item is something beginning with 'I'.

If one of our members hasn't received a Christmas present please contact Daphne as we have one left over.

We meet at Rhodes Minnis Village Hall at 2pm and visitors are very welcome to join us.

For further information please contact Marion 862913 or Daphne 862865.

Eleanor Gwendoline Wren - RIP

We would like to announce with great sadness, the passing of Eleanor Gwendoline Wren, 80 years (24.12.1943 to 16.01.2024). Eleanor passed away at home and is lovingly remembered by her husband of 54 years, William, their son, Daniel, and their daughter, Caroline, and her three grandchildren, Kieren, Danny and Sophie.

The funeral is to take place at Lyminge Parish Church on 23rd February at 1pm.



LYMINGE HISTORICAL SOCIETY



After the usual Winter break in January and February, we will resume talks on 5th March 2024.

7.30pm at the Tayne Centre, Lyminge

Andrew Richardson - Daughters of Kings: Women of Power in the Kingdom of Kent

This will be followed on Tuesday 2nd April

7.30pm at the Tayne Centre

A talk by John Buss: The East Kent Coalfield – The impact of the coal industry on this largely rural area

Lyminge a History Part 13 now available. Great value at only £7.

This can be purchased at the Library, Lyminge Village Store or direct from Daphne on the number below. You can also purchase it at the Lyminge Historical Society talks. N.B. We now have a card reader for purchase of books and payment of Membership Fees.

All *Lyminge a history* publications can be purchased individually through Lyminge Village Store, Lyminge Library, or online via our website using PayPal.

Plus: purchase Parts 1-5 as a bundle for £22 or Parts 1-12 for £60*

Lyminge archaeology chapters in Parts 2,4,6,7,8,10 & 12 for £35*.

Live locally? You save on postage without going through the web site and using Paypal which automatically adds postage. Payment via LHS card reader.

Contact Daphne, phone no. below.

To take advantage of the offer please call Daphne Andrews on

01303 862865. N.B. These bundles are not available from

The Library or Lyminge Village Store.*Postage and packaging extra.

Email: lymingehistoricalsociety@gmail.com

Website: www.lymingehistoricalsociety.co.uk

Facebook: www.facebook.com/Lymingehistoricalsociety

Coach & Horses



CHECK OPENING HOURS

For bookings and any help needed, please phone

01303 901011 or check

Facebook page

'Coach & Horses'



Editor: pbarnes20@icloud.com

A Little More Joy

Eco-friendly gift boxes



Vibrant, environmentally conscious gift boxes that are kind to the planet. We also have a build your own option for a more bespoke gift.

10% Discount on your first order (**welcome10**).
Local collection (Lyminge) can be arranged via email.

Contact details

Website: www.alittlemorejoy.co.uk

Email: alittlemorejoyuk@outlook.com



Lyminge Bridge Club

New Members Welcome

We meet every Monday morning from 10am -12noon at Lyminge Bowls Club for a game of Bridge, a cup of tea/coffee and a chat. This is a very social, non-league Bridge Club which is not affiliated to the National or Kent County clubs.

If you have never played before but would like to find out about Bridge you are more than welcome to come along and see what it is all about.

We play Acol and American Standard Bridge (but not Duplicate) in a pleasant, informal atmosphere. You do not need to bring a partner as current members will partner you.

The Bridge players in the club come from varied backgrounds with a wide spread of ages. Some members are very new to Bridge and some have great skill and experience from many years of playing but we all have fun and enjoy our Bridge together. It is a great way to make new friends.

Members pay £2 a week which includes tea, coffee and biscuits and there is a small annual affiliation fee to the Bowls Club.

Just turn up on any Monday morning or for further information contact Janet Fry on 863177 or janet@rhodesminnis.org.uk



Tel: 01303 863737

COACH AND HORSES

Lunch service:

12:00 - 2:30

Dinner service:

5:30 - 8:00

Monday-Saturday

WHAT'S ON?

Roast dinners

served 12:00 - 7:00

Sundays

WEDNESDAY LUNCH

Pie and mash

- Wednesday lunchtime
- £10 per person

ALL DAY FRIDAY

Fishy Fry-day

- Fish dish for £10
- Includes fish and chips, scampi and chips, fish pie etc

ALL DAY SATURDAY

Curry Curry Curry

- You guessed it... curry!
- £10 curry and rice
- A variety of curries including Boo's own thai curry (fan fave!)

MON - SAT LUNCH

Winter Warmer

- Soup and bread
- £5 per person

SECOND WEDS

Music bingo

- £2 per card
- £5 for bingo food
- Starts at 7:30

FOURTH WEDS

Monthly quiz

- £2 per person entry
- £5 for quiz food
- Starts at 7:30

**SUPPORT YOUR LOCAL PUB -
YOU'RE ALWAYS GUARANTEED A WARM WELCOME**

Please remember, the heating is on at the pub and we welcome those who seek warmth and company. We care about the community and don't want anyone sitting at home, alone in these cold, bleak, winter months.

We have dining chairs, booths and comfy sofas, central heating and an open fire. We also have a dart board and plenty of board games!

**BOOKING ADVISED
01303 901011**



LYMINGE GARDENERS' SOCIETY 2024 Events

Tuesday 19 th March – 7:30pm at The Tayne Centre	Presentation by Jo Arnell (Hornbrook Manor, Woodchurch – Horticulturist and Designer) – "How To Get Your Plants Through Hell and High Water"
Saturday 23 rd March Plant Sales from 11:00am Show Open 2:00pm until 4:00pm	Spring Show and Plant Sales The Tayne Centre, Lyminge
Tuesday 16 th April – 7:30pm at The Tayne Centre	Presentation by Laura Brady from The Wonky Parsnip Nursery
Tuesday 14 th May	Wisley Visit
Tuesday 18 th June – 2:30pm at Downs Court, Boughton Aluph TN25 4EU	Downs Court Garden Visit and Tea
Tuesday 16 th July – 2:30pm at The Wonky Parsnip, Brogdale Farm, Brogdale Road, Faversham ME13 8XZ	The Wonky Parsnip Nursery Visit and Tea
Saturday 20 th July Plant Sales from 11:00am Show Open 2:00pm until 4:00pm	Summer Show and Plant Sales The Tayne Centre, Lyminge
Tuesday 17 th September – 7:30pm at The Tayne Centre	Presentation by Guy Deakins – "How To Commit the Perfect Murder!" (How to feed your garden / the nutrients plants need)
Tuesday 15 th October – 7:30pm at The Tayne Centre	Flower Arranging Workshop with Gill Broadley and Yvonne Neville
Tuesday 19 th November – 7:30pm at The Tayne Centre	Presentation by Steve Edney (previously of The Salutation Garden, Sandwich) - "Succession Planting".
December – Time and Venue to be confirmed	Christmas Meal (Members Only)

All Welcome – novices to experts

Membership Fee £5 per year plus £3 per Talk/Presentation or £20 per year to include 5 Talks/Presentations. Visits and Other Events payable on the day

For more information email: lymingegardeners@gmail.com



Morning Coffee

The POSTLING COFFEE & CAKE MORNING

Saturday 9th March

Saturday 13th April

Saturday 11th May

Saturday 8th June

Saturday 13th July

Saturday 10th August

Saturday 14th September

Saturday 12th October

Saturday 9th November

Between 10am and 12noon at Postling Church with all proceeds going to The Pilgrims Hospice



Lyminge Friends

The new Committee of Lyminge Friends are excited to share the new 2024 programme with you which includes talks, lunches and outings. **Programmes will be available at the AGM where we hope to see as many members as possible as well as new members who are very welcome.**

The **Annual General Meeting followed by a Music Quiz** will take place on **Wednesday, 7 February 2024 in the Rigden Room of the Tayne Centre.** There will also be a raffle (please note we are limiting this to 3 prizes).

March is **Women's History Month** and we will be welcoming **Jean Hatton** whose talk will be **"Betsy" – Life of Elizabeth Fry**.

Everyone welcome – Entry is £4

We are a friendly social group and welcome new members so just drop into a meeting, or if you'd like to talk to one of us first, please call 07904 157897. All meetings are 10.30am to 12noon.

BOYKE MANOR COTTAGES

Family-run holiday lets that have been running for 12 years

Are you looking for somewhere for a break or a longer stay?

- Two cottages available in the Elham Valley (Ottinge)
- One sleeps 6 and the other sleeps 4
- Can be let individually or together
- Fully equipped holiday cottages rated as 4 star

Provides relaxing holidays in a peaceful rural setting, close to the coast and with a wide range of places to visit in close proximity.

Ideal for a family getaway/holiday or short stays in between house purchases/whilst renovations are being undertaken.

Much more economical than hotels and the accommodation offers very high standards.

For further details, contact Paul on 07860 452640 or visit www.boyke-manor-cottages.co.uk

Editor: pbarnes20@icloud.com

**Freshly Prepared
Breakfasts & Light Lunches
Home Baked Cakes
Vintage Afternoon Teas
Coffees
Teas
Takeaway Available
Private Functions**

Open Tuesday to Saturday
9am to 3pm
Dog Friendly

THE COFFEE CABIN TEA ROOM LTD.
CANTERBURY ROAD, LYMINGE, KENT.
CT18 8HU. 01303 864222
Instagram @thecoffeecabintearoomltd
Find us on Google Maps



Fifth Trust Update

www.fifthtrust.co.uk

Are you a carer wanting to meet like-minded people who share your experiences? Do you want to support and learn from others? Then you should come along to Care & Share – a relaxed monthly group founded by carers to support other carers, facilitated by The Fifth Trust. The meetings take place at 9am on the first Thursday of the month in the Vineyard Café (CT4 6LN). The group is open to all parents/guardians, relatives, and carers who support somebody with a learning disability.

For the next meeting on **Thursday 1 February**, a member of Carers Support will be on hand to provide information and support to people who look after a relative or friend. If you have any questions or would like to come along, send Jacqui an email at Jacklabell@aol.com

Lyminge Judo Club

(Bushido Club registered)



We are a small friendly village club. We welcome and encourage both novices and skilled players and train every Monday evening at Lyminge Village Hall from 6.30pm. Open to all ages from 6 upwards - no upper age limit.

Juniors £2.50 per week; Seniors £3.50 per week. First session free, with no obligation.

Contact: Craig Munn email: craig.munn1@yahoo.com

Facebook: www.facebook.com/Lymingejudoclub

Jumble Sale

GRAB YOURSELF A BARGAIN!

At Age UK Hythe, Sanford House, Stade Street, Hythe, CT21 6BD



Saturday 3rd February 2024 – 10am to 2pm

Café will be Open

For further details please contact
01303 269602
vc@ageukhla.org.uk



Registered charity number 1125274. Company number 6598817. © Age UK Hythe and Lyminge 2024.



Join us for All Day Breakfast

Every Wednesday

9am - 2pm

£4.50 - includes Tea/Coffee

AGE UK Lyminge, Everist Court



AGE UK - LYMINGE

MAGIC MIKE

Friday 16th February
7pm – 10pm

Age UK Lyminge, Station Road, Lyminge, CT18 8HQ

Refreshments available, however, if you fancy a cheeky tippie you are welcome to bring your own alcohol, popcorn, hot and cold refreshments available to purchase.

Booking is essential by calling 01303 269602

Registered charity number 1125274. Company number 6598817.
All proceeds raised stay local to support older people living in your community.

Editor: pbarnes20@icloud.com



BOXFIT



Age UK Hythe, Stade St, Hythe, Kent CT21 6BD

Wednesdays - 4.45pm to 5.45pm

£6 per class 01303 269602

Age UK Lyminge, 63 Station Rd, Lyminge, Kent CT18 8HQ

Thursdays - 10am to 11am

Non-contact boxing class for people age 55+.

No experience required. Everyone is welcome, so come along and join us.



Supported By



Registered charity number 1125274. Company number 6598817. © Age UK Hythe, Lyminge and Ashford 2023.

LYMINGE AND ELHAM VALLEY STROKE SUPPORT

Have you or a family member been affected by a stroke?

We are aware of how isolating this can be for the survivor and their carers.

Come and join our informal local support group.

February 2024

12th and 26th

10am until 12noon

We meet twice monthly on Monday mornings at the Coach and Horses, Lyminge

For more information or if you would like support but are unable to attend the meetings, please email or telephone:
 Email: Lymingestrokesocial@gmail.com
 Telephone: 07903 150 099 or 07846 177 409

THE TOWER THEATRE FOLKESTONE

GALA MILITARY CONCERT



Saturday 2 March
7pm

All tickets £14 | Doors from 6pm



BOX OFFICE 01303 223925 or towertheatrefolkestone.co.uk

Saturday 23 March 7.30pm



Tickets £24.50

Doors 6.30pm

OPERA BOYS

The Tower Theatre, North Road, Shorncliffe, Folkestone CT20 3HL

Registered Charity 1180504

4TH SUNDAY OF EACH MONTH

LYMINGE FARMERS' MARKET

NEXT: 25 FEB

9:30 - 12:30
LYMINGE VILLAGE HALL

PIES
-
CRAFTS
-
GLASS ORNAMENTS
-
SWEET TREATS
-
LOCAL HONEY

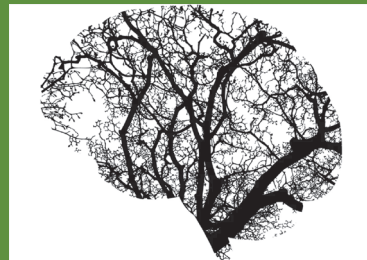
LOCAL BUTCHER
-
FRESH VEG
-
TRUCKLED CHEESE
-
MONTHLY CHARITY STALL

WANT A STALL?
FB/INSTA
@LYMINGEFARMERS MARKET

KNITTED BABY ITEMS
BESPOKE CRAFTS AND DELICIOUS FOOD!
HOT FOOD/DRINK
FREE ENTRY - PARKING AVAILABLE - CASH AND CARD

MINDCRAFT EDUCATION

MENTAL HEALTH COACHING FOR TEENAGERS



As an experienced special needs teacher with a qualification in counselling, I now offer single sessions and a number of courses directed at improving the mental health of teenagers. This can involve focusing on specific areas of concern or more general mental health issues, designed to create happier and more resilient young people.

For more information please contact me on 07458 949222

or go to www.mindcraftededucation.co.uk

LYMINGE PARISH COUNCIL

Etchinghill - Lyminge - Rhodes Minnis

www.lymingeparishcouncil.org.uk
clerk@lymingeparishcouncil.org.uk



Agendas, minutes and relevant reports are published on the council website. If you would like a copy of council documents please contact the clerk.

NEIGHBOURHOOD PLAN

'Looking to the Future' event:

A neighbourhood plan for Lyminge

Saturday 24th February 2024

Lyminge Village Hall

Lyminge Parish Council is in the early stages of developing a Neighbourhood Plan covering the whole parish. This is a document that will contain planning policies which, once agreed by the community, will sit alongside the Folkestone and Hythe District Council Local Plan and will help to guide planning applications and how land is used in Lyminge Parish for the next 15 to 20 years.

In December, we held a first meeting of those interested in getting involved in the project.

It was very well attended and everyone is motivated to progress the project. To that end, the Parish Council is hosting a 'Looking to the Future' event on the 24th February and we would welcome all those with an interest in the future of Lyminge parish to attend. The drop-in event will provide an opportunity to

learn more about neighbourhood planning – what it is and the sorts of things it can achieve. Our Planning Consultant, Alison, will be on hand to answer any of your questions.

We will provide an overview of the feedback we received from parishioners during our events in October 2022 and set the main focus of how we, locally, can have a greater influence on the following themes:

- Conserving our local character and heritage
- Delivering the type and size of homes that we need in Lyminge
- Improving opportunities for walking and cycling locally
- Protecting our environment, green spaces and biodiversity.



CONTACT INFORMATION

Neighbourhood Plan/Built Environment/Planning - roger.joyce@lymingeparishcouncil.org.uk
Climate Action - claire.norman@lymingeparishcouncil.org.uk
Community Engagement/Social Environment - emily.arnold@lymingeparishcouncil.org.uk
Natural Environment - tony.king@lymingeparishcouncil.org.uk
Handyman - fred@lymingeparishcouncil.org.uk
General - clerk@lymingeparishcouncil.org.uk / 07999 403948

NEIGHBOURHOOD PLAN CONTINUED...

There will also be further opportunities to give your views on these topics at the event.

The event timings are below:

- 10am - Event welcome and brief introduction to Neighbourhood Planning
- 11am - Talk by Alison Eardley
- 12pm - Talk by Alison Eardley
- 1pm - Goodbye talk and close of event

Would you like to get involved?

We are keen to hear from anyone who would like to get involved in one or more of the themes noted above. Perhaps you have specialist knowledge or are just interested in a particular area. Whatever the reason, we would love to have your input.

If you have any questions, please contact the Clerk.

See you on February 24th at Lyminge Village Hall!

ICY ROADS

Following an incident in Etchingill recently, please may we remind residents to drive slowly around bends, particularly on the corner by Etchingill Golf Club and further down towards New Barn Corner. Both of those areas are particularly icy as there is usually water on the road and even slightly too fast can be dangerous!

JOB VACANCY:

Parish Clerk at Lyminge Parish Council

Closing date: Noon Friday 16th February. 20 hours per week. To apply or for a job description please email elise.moss@lymingeparishcouncil.org.uk.

DATES TO NOTE:

Surgeries:

Mondays* 10:30am - Coach and Horses, Lyminge (*Not school holidays).

Every 4th Sunday 11:00am - 12:00pm Lyminge Village Hall. Council surgery.

Meetings:

5th Feb - F+A - 18:30

12th Feb - Full Council - 19:00

4th March - F+A - 18:30

11th March - Full Council - 19:00

8th April - Full Council - 19:00

29th April F+A - 18:30

FEBRUARY MEETING DATES

Full Council - 12th February 19:00 - 21:00 - Rigden Room, Tayne Centre, Lyminge

Finance and Administration - 5th February 18:30 - 20:30 - Rigden Room, Tayne Centre, Lyminge



Thoughtful Food....

...is a group of local volunteers looking at our food, and how this impacts climate change. Our aims are to support people to produce more of their own food, and to shop locally, sourcing seasonal produce. We also run a community allotment in Lyminge and welcome new members.

Contact: thoughtfulfoodgroup@gmail.com or on Facebook and Instagram [@thoughtfulfoodgroup](https://www.instagram.com/thoughtfulfoodgroup)

Next **Thoughtful Food** meeting, **Tuesday 6th February, 7.15pm**, at the Coach and Horses Public House

Allotment Plots

We still have 2 mini-allotment plots available. The plots are 'let' to individuals, couples, families or groups to 'grow their own'. It's ideal for anyone who wants to give it a go, but perhaps doesn't have a suitable garden or set up, and without taking on the commitment of a large allotment plot. Do drop us an email at thoughtfulfoodgroup@gmail.com if you'd like to know more.

Things To Do In The Garden In February

Whilst the advice for February is much the same as January, i.e. stay by the fire and drink tea, many of you will be twitching to get on.

- If you haven't already bought them, buy seed potatoes - Earlies crop 12 weeks sowing, 2nd earlies a bit later and main crop later still. Varieties such as Rocket or Swift and Foremost are good Earlies. Charlotte and Maris Peer are good second earlies. Put your seed potatoes in egg boxes with the sprouting eyes upwards and put them somewhere light and cool to grow stubby, strong buds. Don't let them be too warm and dark or else the buds will be white, leggy and weak.
- Take this opportunity to do a tool check, give them some TLC, repairing, sharpening and oiling. They will love you back.

Grow To Share

Thoughtful Food will soon be launching **GROW TO SHARE**; hold that thought whilst drooling over your seed catalogues. TF is pleased to be part of the *Folkestone and Hythe District Food Network* (DFN). The DFN was set up in 2021 to gain a better understanding of the need to share food resources across the Folkestone and Hythe District Council area and to enable everyone to know who is delivering what food services and to which groups of service users.

Thoughtful Food has thought of a simple but valuable way to contribute more to the network but we need your help. When you sow your seeds, could you sow a few extra and grow them on with your other seedlings with a view to giving your excess produce to food pantries or food banks within the district? Please don't feel you have to grow enough to supply half of Folkestone - a bag of runner beans, tomatoes, courgettes, apples would be very gratefully received. There will be a pickup service to collect your produce and we will be sending out information soon on how this can be arranged.

So now you'll be needing some seeds.....

Thoughtful Food Community Seed Boxes

We are delighted to announce that we have been given permission to leave seed boxes in the telephone libraries in Woodland Road and Station Road. Feel free to take some seeds of the ones that you wish to try. You don't have to leave any seeds in exchange but it would be nice if there was a constant ebb and flow of seeds to share.

If you would like any advice on sowing, planting or harvesting contact us via our email address. When you get your seeds home, pop the envelopes into a box (empty ice cream tubs are good) Make some card dividers with the date of sowing clearly visible. If there isn't any instructions on the seed packet you may have to 'Google' them to find the sowing month.

Recipe of the Month: Mushroom and Thyme Tagliatelle

- 250g chestnut mushrooms
- 25g butter
- 150g tagliatelle
- 2 echalion shallots (or a small onion), finely chopped
- 3 garlic cloves, finely chopped
- 5 thyme sprigs, leaves only
- 125ml white wine or vegetable stock
- 5 tbsp half-fat crème fraîche
- 75g Saint Agur blue crème or other vegetarian blue cheese
- 40 g of chopped walnuts

METHOD

Step 1 Heat a large frying pan, add the chopped walnuts and toast them over a medium heat for 2 mins. Set aside.

Step 2 Slice the chestnut mushrooms and bring a large pan of salted water to the boil.

Step 3 Return the frying pan to the heat and melt half the butter. Add the mushrooms and fry over a high heat, stirring occasionally until golden. Set aside.

Step 4 Add the pasta to the pan of boiling water and cook for 7-8 mins or until al dente.

Step 5 Meanwhile, return the frying pan to the heat. Add the remaining butter, shallots, garlic and two-thirds of the thyme. Cook gently for 5 mins, then return the mushrooms to the pan. Increase the heat, pour in the wine or stock and season well. Bubble for 2 mins until reduced, then stir in the crème fraîche and half the cheese.

Step 6 Drain the pasta, reserving 2 tbsp of the cooking water, and return to the pan. Add the mushrooms, sauce and reserved cooking water and toss to coat. Season.

Step 7 After dishing up, crumble over the remaining cheese and sprinkle with the walnuts and remaining thyme.



Very Best Seasonal Wishes from Thoughtful Food



After the darkness of January, February brings fresh hope of new life as nature stirs after its winter hibernation. The shortest month of the year, it marks the final month of the winter season and heralds the dawning of spring.

In February, it can also start to feel noticeably lighter each day which is always a boost after shorter daylight hours. This extra light makes heading for walks to spot wildlife a little easier, so why not see what you can spot this month? From winter birds to snowdrops even in the depths of winter in the UK there is a surprising amount of species to spot and wildlife spectacle to witness, so let's fall in love with nature this February and [#lovewhereyoulive](https://twitter.com/lovewhereyoulive).

Litter



Despite the number of litter bins we have in the area there have been a notable increase in the amount of litter being seen on the streets. Litter is not only unsightly but it can also be very dangerous to wildlife. So why not take some time this month to have a little clear up of where you live, remember every little helps!!

For those of you who like to play a game whilst doing this there is an app called **LitterLotto** which encourages people to bin their litter. The app gives users the chance to win thousands of instant cash prizes each month, from £5 to £250, as well as the jackpot, by simply binning litter. All litter counts — from a single cigarette stub, to a takeaway meal box. Users simply download the free app, then take a picture as they bin litter, anywhere. So why not give it a go?

Unfortunately due to lack of interest we have had to cancel our planned workshop with Social Enterprise Kent on Digital Skills and Energy. They are running workshops in other areas so if you did want to take up this free workshop then please contact digitalsupport@sekgroup.org.uk or call 01227 46997

FREE DIGITAL SKILLS AND ENERGY SESSIONS

To sign up, contact: digitalsupport@sekgroup.org.uk or call 01227 469 970

Half day class for adults in East Kent, where you will learn how to:

- 1 Spot scams
- 2 Apply for energy grants
- 3 Download and use smart apps and the internet

Funded by: UK Power Networks Delivering our decarbonised energy

ELECTRONIC SMART PACK FOR EVERY PARTICIPANT

Social Enterprise Kent



Bumblebee Workshop with Bumblebee Conservation Trust on 27th March

Following our successful bee **Walk & Talk** last August (see July and September newsletters), the Bumblebee Conservation Trust team has kindly offered to run a beginners bumblebee identification workshop for us this spring.

It will take place on **Wednesday 27th March** from **9.30am to 3.30pm**, based at the scout hut. They will bring a host of resources to teach participants how to identify our local bumblebees, and will have numerous resources available to purchase including identification books and leaflets. They will provide tea and biscuits but please bring your own lunch, and perhaps even your own comfy chair (most of the scout chairs are child-size...)

This event will also help us to set up a monthly bumblebee monitoring programme in the Parish (see beewalk.org.uk). Please let us know in advance if you'd like to come, or if you'd like to get involved even if you can't come, through Tony King (tony.king@lymingeparishcouncil.org.uk) and/or Alex Hodges (alexander.hodges@bumblebeeconservation.org).

POP ME ON THE FRIDGE

**MOBILE
FISH &
CHIPS**



**EVERY
THURSDAY**

From

11.45am - 12.45pm

**Age UK Car Park
Eat In Cafe
or Take Away**



STREETZ 2 STREETZ
TELEPHONE:

07955 926 835

Major Cards Accepted

E.F.LETTINGS

Residential & Student



YOUR LOCAL LETTING AGENT

At EFLettings we believe in a personalised service
We are here for you every step of the way

www.efettings.co.uk
Tel: 01227 533550

**Sarah
Holbrook**

PAINTER & DECORATOR

**Elevate Your Space with 20
Years of Expertise**

Services Tailored to your Specification

Internal & External Work

Paper Hanging

Domestic & Commercial Undertaken

Peace of Mind - Fully Insured

Competitive Rates - Top-notch service at affordable prices

Free Quotations: Get a clear understanding of costs with
no-obligation quotes.

☎ 07891743740 ✉ sholbrookdecorating@gmail.com

There is a vitality, a life force, an energy, a quickening, that is translated through you into action, and because there is only one of you in all time, this expression is unique.

- Martha Graham

Daniel
Kirby Roofing & Building



Quality materials and reasonable rates
Established 1996, based in Hawkinge, Near Folkestone,
and covering Folkestone and Hythe areas
Embracing all roofing work from small roof repairs to
complete re-roofs.

What we do:

- Fibreglass Reinforced Plastic flat roofs
- Felt flat roofs
- New pitched tile and slate roofs and repairs
- Small and large jobs
- Fascias soffits and gutters
- Chimney repairs, rebuilds and removal
- Conservatory conversions
- Advice and free quotes

Visit full website below for more details

www.roofers-folkestone.co.uk

01303 892705 07916273886

Kent's Leading Mobility Specialists

Over 200 new & used scooters available

USED SCOOTERS FROM £395

BEDS FROM £1395

CHAIRS FROM £595

Huge range of Shoes & slippers for problem feet

HOME DEMONSTRATION LET US COME TO YOU

STAIRLIFTS



FOLKESTONE STORE

Tel: 01303 274574

www.safehandsmobility.co.uk

folkestone@shmobility.co.uk

Compass House, 347-349

Cheriton Road, CT19 4BP

ALSO AT BIRCHINGTON



HEAVER & LINCH

Bespoke Handmade Kitchens & Furniture

Bespoke Handmade Cabinet Makers based in Lyminge, covering Kent and the South East.

Over 30 years experience in creating stunning solid wood kitchens and furniture.

Get in touch for any advice, recommendations and a free quote.

Tel: 07832 360 603 or 07832 363 963

Email: heaverlinch@outlook.com

Website: www.heaverandlinch.co.uk



Don't be led up the garden path...

...choose an agent that gives straight forward, honest advice.



Call today for a free, no obligation valuation

Bridge Office - 01227 831999
bridge@colebrooksturrock.com
 88 High Street, Bridge, CT4 5LB

Elham Office - 01303 840422
elham@colebrooksturrock.com
 Bank Buildings, Elham, CT4 6TD

colebrooksturrock.com





Lyminge Baby & Toddler Group

We are excited to welcome you to our local parent, baby and toddler group.

Please come along, meet new mums and dads for a chat and a play.

It costs £3.50 with tea and coffee provided along with snacks for your child.

Tuesdays, term times only. 10am to 12noon at the Tayne Centre.

First session is free.

Follow us on Facebook and Instagram.

Contact Ellen at 07870405567.

Early Years Education & Day
Care for Children Aged 2-5



LYMINGE Pre-school

Every Day Adventures
at our **OUTSTANDING** pre-school

COUNTRYSIDE SETTING

FANTASTIC FACILITIES & GARDENS

QUALIFIED & LONGSTANDING TEAM

WRAP AROUND CARE 8-5PM DAILY

HOLIDAY CLUB OUTSIDE OF TERM TIME

AFTER-SCHOOL CLUB

PARENT PORTAL



Rated **OUTSTANDING**
by OFSTED 2022

We'd love to hear from you:

☎ 01303 863149

✉ LYMINGEPRESCHOOL@GMAIL.COM

My Clear Ears - Clinical Ear Care

Practitioner with CQC registration and fully insured
**Appointments available for wax removal
by microsuction**

Wax removal £60 ~ Otoscopy £20 (Ear health check)

In the comfort of your own home!

Please call Collette on 07544586882

Etchinghill **Baby & Toddler GROUP**

10.15-11.30am every Wednesday
at Etchinghill Village Hall
£2.50 per child

Come along to Etchinghill's Parent and Toddler group welcoming all pre-school children. We have plenty of toys and snacks for the little ones, and there is always tea, coffee and cakes for the adults. For further information call Ruth on 07817777975, look at Parent and Child Etchinghill Facebook page or email us as parentandchildetchinghill@gmail.com.



BADGERS BRIDGE NURSERY

"Bridging the indoor and outdoor learning environment for children in their Early Years"

Badgers Bridge is set in the idyllic countryside of Postling, just outside Lyminge. We are a small and friendly Preschool who blend the Montessori principles with the outdoor learning ethos.

We were awarded Outstanding by Ofsted in 2018 in every area. This is a real achievement and we are really proud of the staff who work tirelessly to provide a stimulating and caring environment for the children of Badgers Bridge.

The inspector was particularly impressed with our Forest School. *"Children enjoy limitless opportunities to explore, investigate and work together in the natural woodland environment. Staff skilfully inspire children to develop a significant understanding of the world in which they live".*

".....exemplary relationships between staff provide excellent role models for children and promote high standards of behaviour. Children make outstanding progress during their time at the nursery".

Exciting news! We have opened our new setting in Elham. We offer the same unique outdoor experiences for children from 20 months old. Come along and see us at The Gore!"

So please call or email us:

Email : badgersbridge@gmail.com

Website : www.badgersbridge.co.uk

Tel : 01303 862951

Postling Village Hall, The Street, Postling CT21 4EU

Ofsted Registered : 395128

Companies House Reg : OC375571



With our excellent local knowledge & experienced staff we will get you moving

✓ **Free** professional photography, property floorplan, Rightmove premium listing & social media advertising

01303 863393

The Estate Office,
8 Station Road,
Lyminge,
Kent CT18 8HP

Follow us on
social media



www.laingbennett.co.uk

ETCHINGHILL VILLAGE HALL HIRE FEES

The next time you are thinking of holding a function why not try Etchinghill Village Hall, which holds the highest Hallmark accreditation level (Hallmark 3), with its excellent facilities, including ample parking space.

The standard hire charge for the main hall and kitchen are:

ANY DAY OF THE WEEK ANY TIME £12 PER HOUR

No winter supplements. No extra charges.

Ideal for family parties and get togethers.

The use of a separate Committee Room is also available.

For all bookings or enquiries please contact:

The Duty Manager on 07514 758936

The Lyminge Association

We're here to support and develop our community!!

Contacts:

Chair: Peter Barnes 01303 863737 or 07808775302
pbarnes20@icloud.com

Treasurer: Martin Fry 01303 863177
martin@Rhodesminnis.org.uk

Minute Sec: Michelle Nolan

Committee Members:

Marian Chubb, Richard Chubb, Dave Hunt-Cooke, Heather Dunford, Stephen Guyatt, Gillian Heywood, Robin Mackonochie, Derek Smith, Penny Stephens, Adrian Willcox, Bernie Wood

Newsletter: As for Peter Barnes above

Editor: pbarnes20@icloud.com

Rhodes Minnis Village Hall

Charity No.800345

Rhodes Minnis Village Hall is located 2kms (1¼miles) from Lyminge and just off Longage Hill and Whitehorse Lane in Chapel Lane.

The hall, which holds Hallmark accreditation, is ideal for children's parties, band practice, quizzes, meetings, wedding receptions, fundraising events and much more. It has a fully equipped kitchen.

Rates

Mon to Fri £18 per session £48 all day

Sat & Sun £23 per session

£33 for evening session and £69 all day

Sessions

AM session 08.30 - 12.30

PM session 13.30 - 17.30

Evening session 18.00 - 23.45

Separate rates for Bank Holidays and New Year and special rates for regular users.

For all bookings and enquiries please contact:

Mick & Dorothy Athow: 01303 862616

e-mail: booking-rmvh@outlook.com



Large hall with stage, new kitchen and flexible hire

Excellent parking facilities, disabled access, proximity to playgrounds and playing fields. Beautiful countryside location.

Capacity:

200 people dancing / audience seating, 100 with tables
Small rooms available for up to 50 seated

Find out how we can help you with your next event:

BOOK ONLINE: lymingevillagehall.org.uk

EMAIL: admin@lymingevillagehall.org.uk

INFO: 07525 909185

Full pricing can be found on our website.

Guideline prices:

Main Hall hire: £88.40 (Fri / Sat evenings)

£47.60 (Sat / Sun morning or afternoon)

Find us on Facebook

Registered charity 28145

LYMINGE METHODIST CHURCH AND TAYNE CENTRE HALL HIRE



Church Seating Max 150

£20 per hour

Clayson Hall (with Stage) Seating Max150

£15 per hour

Rigden Room Seating Max 35

£10 per hour

Wesley Room Seating Max 15

£10 per hour

All rooms have use of kitchen, toilets and disabled toilet. With the exception of Wesley room, all rooms are disabled-friendly and accessible.

Contact Tel: 07716521405 Email: maryeblanch@outlook.com

If you look at what you have in life, you'll always have more. If you look at what you don't have in life, you'll never have enough.- *Oprah Winfrey.*

You may say I'm a dreamer, but I'm not the only one. I hope someday you will join us. And the world will live as one.- *John Lennon.*

Bus times

To Folkestone town centre via Etchinghill & Cheriton High Street
From Lyminge, The Sidings

MONDAYS TO FRIDAYS except Bank Holidays

There are route 17 buses at 0642, 0748, 0909, 0944, 1044, 1144, 1244, 1344, 1444, 1614 (schooldays only), 1619, 1704, 1804, and 1904.

SATURDAYS

There are route 17 buses at 0749, 0844, 0944, 1044, 1144, 1244, 1344, 1444, 1544, 1644, 1744, 1844, and 1929.

On Mondays to Saturdays there are also route 18 buses to Sandling Station & Hythe - for times see our website or call the number below.

SUNDAYS & BANK HOLIDAYS

There are route 17 buses at 1032, 1302, 1532 and 1802.

To Canterbury city centre via Elham, Barham & Bridge
From Lyminge, Wesley Terrace

MONDAYS TO FRIDAYS except Bank Holidays

There are route 17 buses at 0727, 0752 (school holidays only), 0903, 1003, 1043, 1143, 1243, 1343, 1443, 1613, 1733, and 1858.

SATURDAYS

There are route 17 buses at 0742, 0842, 0943, 1043, 1143, 1243, 1343, 1443, 1543, 1643, 1743, and 1843.

On Mondays to Saturdays there are also route 18 buses to Canterbury via Stelling Minnis and Bossingham - for times see our website or call the number below.

SUNDAYS & BANK HOLIDAYS

There are route 17 buses at 0903, 1133, 1403, and 1633.

These bus times apply from 25 September 2023.



0345 241 8000 @StagecoachSE
customerhelpSE@stagecoachbus.com
stagecoachbus.com



Anna's Animal Physiotherapy

For dogs, cats & small pets

Anna Lindley
(RVN, Dip.A.Physio)

- Offering physiotherapy assessment and treatment of dogs, cats and small animals.
- I use a combination of manual therapy, laser, ultrasound therapy, TENS, kinesiology tape and exercises to rehabilitate your/their pet depending on the needs. I also address environmental and exercise factors that can help your pet with their condition.
- I now have a **NEW** treatment room where I can offer further assessment of your pet using a stance analyser. This identifies the mildest of lameness and addresses areas of compensation. I also offer home visits. Physiotherapy can help with arthritis and the ageing pet, post operative orthopaedic surgery, neurological, spinal conditions and many more conditions.
- I am fully insured with over 15 yrs experience working with animals. I am a member of the International Association of Animal Therapists (IAAT).
- For more information please visit my website: annasanimalphysio.co.uk or feel free to contact me on 07944 606453 or anna@annasanimalphysio.co.uk



Based in Etchinghill, I provide a personalised service with a one-off, flat fee of £180 to prepare & submit your Tax Return. No hidden costs.

FMAAT Licensed Accountant, fully insured and HMRC-authorised.

Contact Anita: 07361 238744 or
aabookkeepingservicesaadams@gmail.com

Lyminge Library Opening Times

Monday 10am - 2pm
Tuesday 12noon - 5pm
Wednesday 10am - 2pm
Thursday 10am - 5pm
Friday 10am - 2pm
Saturday 9am - 1pm

Tel: 03000413131 lymingelibrary@kent.gov.uk



CIAT
Registered Practice
Chartered Institute of Architectural Technologists

DAVID HAIME
ARCHITECTURAL TECHNOLOGIST
BUILDING TECHNICAL DESIGN
AND CONSTRUCTION DRAWING
SERVICES.
PROJECT MANAGEMENT

BUILDING PLANS FROM PORCH TO NEW BUILD.
PLANNING/BUILDING CONTROL/STRUCTURAL CALCS.
COVERING KENT/SUSSEX/SURREY.

LYMINGE, KENT CT18 8HA
TEL: +44 7974 156510
EMAIL: D.HAIME@BTINTERNET.COM

Kingdom
CARPET CO.

- Carpets Supplied & Fitted
- Carpets Professionally Cleaned
- Carpets Whip Edged & Cotton Bound

Whatever your carpet need, give us a call for a **FREE** estimate / assessment.

Over 50 years combined experience.

07943 764 442

Email: kingdom.carpet.co@gmail.com

 **GEORGE MILLER**
BOILER & HEATING ENGINEERS

- Gas & Oil Boilers
- Central Heating
- Hot Water Systems

01303 901070

service@georgemiller.co.uk

248 Cheriton Road,
Folkestone, CT19 4DN



georgemiller.co.uk

Financial Planning

David Gridley - Chartered Financial Planner

Range of quality advice from a fully qualified adviser:

- Pre- and Post-Retirement Planning
- Investment Planning
- Inheritance Tax Planning

For further information, please contact our Lyminge office

David Gridley FPFS

Tel: 01303 863959 Email: davidgridley@sjpp.co.uk

MWH

Window and gutter cleaning service

Mark Haley



Lyminge and surrounding areas

For a free no obligation quote, please contact me

Mobile: 07738 479202

Home: 01303 863 702 Email: haleymark161@gmail.com

Find us also on Facebook

Ashman Consulting Ltd



Straightforward I.T.

**Advice
Training
Solutions
Support**

Steve Ashman

07702641981

info@ashman-consulting.co.uk

T. Metcalfe Fencing Contractors

Approved Expert Installer for Jacksons Fencing

Established over 30 years

Fully insured - Highly experienced teams



Panel fencing, gates, decking, pergolas, post & rail, stock fencing, security, landscaping & tree surgery.

01303 840201 07790 290 155

metcalfefencing@btinternet.com

Proprietor - Derek Burr,
Ash Ridge House, Elham



Fincham Plumbing & Heating

We specialise in bathroom remodelling, including all tiling & pipework

Natural gas boiler servicing, Installation, Maintenance, Repairs, Replacement

All your plumbing requirements

Martin is a Qualified Plumber & Gas Engineer with over 30 years experience

Gas Safe, CIPHE, WIAPS registered

Rosemary & Martin Fincham

07835 851 706 martinfincham@sky.com



Lou Lloyd

Carpenter

loulloyd@rocketmail.com

07984 426214

Kitchens, Flooring, Wardrobes,
Doors, Decking and more!

**HAND MADE CURTAINS,
ROMAN BLINDS & SOFT
FURNISHING**

CURTAIN ALTERATIONS

TEL: VALERY WREN 0781 1563512



D & S DOUBLE GLAZING SERVICES

01303 863689 - 07912317915

We are a local company that specialise in double glazing repairs offering a wide range of service's that include: Replacement double glazed units - Locks - Hinges - Handles - Rubber Seals - Gaskets.

For a free estimate please call: 07912317915 or 01303 863689

or email: dsdoubleglazingservices@gmail.com



CEDAR TREE CARE City & Guilds

All types of tree work undertaken NPTC

Crown lifting, crown reductions,

dismantling and removals, hedge maintenance,

pollarding, stump grinding and removal, mobile saw milling,

wood land maintenance, all year round seasoned logs available

Fully insured and NPTC qualified with over 15 years experience

Call Tom: 07769 908027 email: linchlogs@gmail.com

SPEARPOINT
TREE SERVICES

All Aspects of Tree Work Undertaken
NPTC Qualified
Fully Insured
Please call **Shane** for a Free Quote
07963 203564 or
01303 621992

B.M. Plumbing & Maintenance Services

Local Lyminge Tradesman

Plumbing and heating works. Complete bathroom install including tiling. General building maintenance undertaken. No job too big. No job too small.

Cheaper rates for senior citizens

07890854128 Benmillsplumbing@hotmail.co.uk



FULLY INSURED

Dog training and Pet care services

- Puppies from 12 weeks old
- Kennel Club Good Citizen Dog Scheme Puppy through to Gold
- 1-2-1 home-based puppy training also available
- Other pet care, dog walking and day cover available
- Other fun classes available - ask for details

Lyn Fagg 07866 234820

Email: Elhamdtc@gmail.com



FULLY INSURED



Snippers and Clippers Barbers - Lyminge

Please call Richard for availability on
07522 494969

Appointments not always necessary

4 Station Road, Lyminge CT18 8HP

Andy Mannering Flooring

SPECIALISING IN AMTICO AND
KARNDEAN LUXURY VINYL TILES

- Also safety flooring, rubber flooring, etc.
- Commercial and domestic work undertaken
- No job too small
- Free estimates and advice given
- Over 35 years experience
- Fully insured



Telephone: 0797 434 7248 or 01303 863095

Email: info@andymanneringflooring.com

Please visit my website for further information and feedback

www.andymanneringflooring.com



DILTON MINI SKIP HIRE

Ballast, Hardcore, Sand
and Topsoil Supplied

REGISTERED WASTE CARRIER

01303 812448 or 07799 433754

Red Dragon I.T. Ltd.



- Windows, Mac & Linux Systems
- PC Health Checks
- Wired & Wireless Networks
- Website Design
- Graphic Design

T: 01303 723456 | E: info@rdit.co.uk | www.rdit.co.uk
The Old Granary, Hanover Mill, Church Rd, Mersham, TN25 6NU

Rhodes Minnis Cat Sanctuary



REHOMING & BOARDING CATTERY

- Our Sanctuary takes in and rehomes 250 unwanted cats and kittens each year. A variety of cats are always available to suitable homes.
- 5* Boarding Cattery under 2018 regulations
- We are open to visitors every day from 10am-1pm & 2-4pm. No appointment needed.

T: 01303 862 243

E: rminniscats@gmail.com

Facebook: @rhodesminniscats

www.rhodesminniscatsanctuary.com

Seathwaite, Green Lane, Rhodes Minnis, Kent. CT4 6XU
Reg. Charity No. 262245



'Helping you enjoy your garden'

CRT Gardening

All general garden and major landscaping redesign work will be undertaken including: full or minor garden design, hard and soft landscaping, new fencing and decking installation and repairs as we are Jacksons Fencing approved installers, hedge trimming and cutting, small to medium tree work.

For a free quotation call or text Karl Dodd on 07967 442518
or email karl.dodd@live.co.uk

Fully Insured



Hawkinge

Veterinary Surgery

Independently owned veterinary surgery for all types of small animals.

Opening hours: Monday to Friday 08:00-19:00 Saturday 08:30-13:00

24hour emergency service

TEL: 01303 764190

Hawkinge Veterinary Surgery, 9b Defiant Close, Hawkinge CT18 7SU

www.hawkingevetsurgery.co.uk



ROBERT KENT Cert. fp
FUNERAL DIRECTOR

Direct
Cremation

£999

Fair Priced
Cremation

£1950

ONE FIXED PRICE INCLUDING
ALL CREMATION FEES

01303 684062

RKFUNERALS.COM

SCRUBBERS - Est. 1988

THE HOME AND COMMERCIAL CLEANERS

One off, regular or moving day 'Blitz'

Oven cleaning - Ironing

Carpet cleaning and more...

For a friendly and reliable service

Free Estimates

Tel: 01303 249288 or 07834 128671

Computer support & repairs by local people

Customer service is our priority

- *Remote IT support for business or home
- *New & refurbished sales
- *Call-outs for business or domestic users
- *Preventative maintenance & upgrades
- *Repairs to most phones, tablets & devices

enquiries@thecomputerpeopleltd.co.uk



Church Approach,
New Romney,
TN28 8AS
01797 363385



Acrise Electrical Services Limited

Design - Install - Maintain

Tel: 01303 656007 Mob: 07803 421240

Email: info@acrise-electrical.co.uk

Website: acrise-electrical.co.uk

Domestic, commercial, industrial & agricultural
electricians serving the Elham Valley and surroundings.

Tressenden Designs

A seamstress and costume maker with 8 years of experience.

- ♦ Clothing alterations ♦ Repair work undertaken ♦ Made-to-measure; create a bespoke piece for those special occasions
- ♦ Modern and vintage designs ♦ Costumes, ball gowns and wedding dresses

For more information or a quote please contact Amy on: Mobile: 07853 202304 Email: amy.louise.ford@hotmail.co.uk





**APX PROJECT
MANAGEMENT**

From design to build, we use trusted quality trade professionals along with reliable suppliers to ensure budgets are met, with high standards maintained. If you're looking to -

- Extend your property
- Carry out an external or internal refurbishment
- Convert an existing building into a new dwelling

Please contact: paul@apxprojectmanagement.co.uk 07487 364155



**Dennis Huntley
Chimney Sweep**



Wood burners and multifuel stoves installed
Hearths and fireplaces built & installed
Over 40 years' experience



01303 862 343 • 07850 784 365

dennis.huntley@talktalk.net www.dennishuntley.co.uk

Auto Economy Centre

Fully equipped Mechanical Repair & Service Centre

With the latest diagnostic equipment

Half price MOTs when booked with any service

01303 863656

Orchard Garage, Canterbury Rd, Etchinghill

www.autoeconomycentre.com

AIR LINK CARS

(You pack up, we pick up)

Airport, Seaport & Long Distance Travel Specialists.
The Family Run Business where service really counts
Estate cars and People Carriers



Fixed price 24hrs a day. No extras.
Written Confirmation of booking.

For the Easy Airport Link, Think AIR LINK!
01303 670370 - 07766 824 474
airlinkcars@yahoo.com

**Gosbee
LANDSCAPES**

FENCING | GATES | PAVING | RESIN BONDING
• Over 35 years experience • Jacksons Approved Installer
• Marshalls approved • Check-a-trade registered

Call Martin Gosbee: 07974 835 511 | 01303 863 337

GOSBEECONSTRUCTION@GMAIL.COM
GOSBEE.CO.UK



Sunhouse Electrical

Your local reliable Electrician
Part P Registered & Elecsa Approved
On Electrical Safety Register & Fully Insured
For a free quotation call James on

01303 766333

www.sunhouse-electrical.com



KW CONSTRUCTION
PLASTERING & RENDERING SPECIALIST

ALL GENERAL BUILDING INCLUDING:
ROOFING, BRICKWORK, TILING, PATIOS,
LANDSCAPING, SCREEDING, GROUNDWORK,
DRAINAGE, EXTENSIONS, RENOVATIONS,
REPAIRS & MAINTENANCE.

30 YEARS EXPERIENCE, COMPETITIVE RATES,
A FULLY INSURED, PROMPT & RELIABLE
HIGH QUALITY LOCAL BUILDER

KENNY 07743488361

**HANDYMAN
SERVICES**
SJW

www.Facebook.com/sjwoodhandyman
www.Instagram.com/sjw.handymanservices
07796 384857

LYMINGE FOOD & WINE

01303 862225



Our new opening times are:

Mon – Sat **7:00-20:00**

Sunday & Bank Holidays

8:00 - 19:00

PayPoint

POST
OFFICE



We offer National Lottery, ATM terminal,
Post Office & PayPoint services.



AK Healthcare

Registered Osteopaths

Tel: 07904311554 /
07980897382

www.akhealthcare.org.uk

As osteopaths, Adam and Katie can help patients suffering from a wide variety of conditions including arthritic pain, circulatory problems, frozen shoulder, back pain, sciatica and much more. Please visit our website or give us a call for more information.

**AK Healthcare,
Garden Suite,
4 Station Road, Lylinge**

Park House Sanctuary Boarding Kennels & Cattery

Park House, Stelling Minnis CT4 6AN

Brick-Built Heated Kennels. Daily Walks ~ Reasonable Rates

Dogs must be fully inoculated. Heated Cat Chalets

Quiet Area Inspection Invited.

To book or for further information, call 01303 862622

or email lord.whisky@btinternet.com

www.lordwhisky.co.uk

South East Aerial & Satellite Solutions

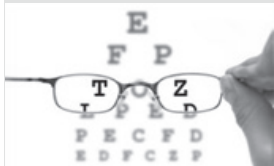
Digital – Freeview – Satellite – Aerials

Supply and fit of quality digital installations, FREEVIEW, SKY, aerials, poor reception and problem solving, upgrades and repairs by fully accredited engineers

Free quotations and advice, fixed prices, fully insured



NO CALL-OUT CHARGE
07825 168010 - 01303 862361



HOME VISITING OPTOMETRIST - providing professional eye care in your home

If you are over 60 years of age and no longer able to get out on your own, then you are eligible for a NHS sight test in your own home. Please call to arrange an appointment:

Elaine Edwards BSc(Hons)MCOptom 01303 840541

Registered with the General Optical Council (01-15421) Member of the College of Optometrists Member of the Association of Optometrists



T.M. GRIGGS

01303 489795 07854 098395
tobystreesurgery@gmail.com



**Garden Clearance - Turfing - Hedge Cutting
Tree Work - Stump Grinding - Fence Repair**

DYNO-ROD



We've been
unblocking
sinks, drains
& toilets
in Kent
since 1965

- Quick Response
- CCTV Drain Inspections
- Drainage Repairs
- Pre-purchase Surveys

For a FREE no obligation quote
contact Mark or Peter on:

**01233 621108
07557 616630**

FRESHLOOK GARDENS

Regular lawn mowing service. Garden design. Hard and soft landscaping. General garden work, fencing and decking. Turfing hedge cutting, small and medium tree work. Water features, ponds and patios.

For free quotation ring **Danny Scott**
01303 242140 or **07795510093**
mrdanscott89@gmail.com

Established since 1990. Fully insured.

THE HANDY FELLOW



**A TRUSTED LOCAL SERVICE
CALL 07534485049
ONE.HANDY.FELLOW@GMAIL.COM**

Computer Repairs

01303 241325
07968 129902

PCs, MACs, Laptops, Tablets & printers,
Upgrades & Repairs, Internet & Email, virus removal,
Office Setup, Backup & Recovery & much more ...
Tuition available by a qualified tutor.

Usual Fee **£55**

Web sites built & hosted from £10 per month

See www.computers-in-lyminge.co.uk for details



General Landscaping Including
Fencing • Turfing • Paving

Gavin Allfree

T 07495 299711 E gavinallfree@gmail.com



Approved
Mobile
Workshop

Alan Croucher
Caravan Engineer



07921 480919 - 01303 863194
Caravans & Motorhomes "WE COME TO YOU"
www.arcmobilecaravanservices.com

"Your manufacturer's warranty is safe in our hands"

Local Tradesman

J Tappenden

Established over 40 years ago

Painter/Decorator

**01303 862467
077755 78008**



Hamilton Windows & Doors

*New joinery, restoration, double glazing of old and
existing timber windows*

Bring your windows and doors back to life and get rid of
cold draughts, or replace them with beautiful new ones.
Joiner/carpenter with many years of experience.

Based in Lyminge, please feel free to call for more information.

07792901266 Alex_b_hamilton@live.co.uk

Jackson Plumbing Property Maintenance

*Complete bathrooms and tiling
No job too small. Special rates for OAP's.*

**Telephone: home/evening 01303 270691
or daytime 07773 089398 or 07864 929826**

Trevor Law Electrical Installations



Serving Elham Valley for 30 years
Part P Registered

07850 970087

Ralph Allard Chimney Sweep



All chimneys, boilers and stoves swept.
Brush and Vacuum. Certificates issued.
HETAS and NACS registered, fully insured.
Member of National Association of Chimney Sweeps

01303 844465 or 07813716654



JBS BUILDERS

Specialising in Brickwork, Fencing, Landscape Gardening. Tree work undertaken (lopping,
felling and clearing).

General household repairs, painting, plastering, power jetting & cleaning.

No job too small!!! All work guaranteed and insured.

For free advice and quotations please call: 07825 168010/ 01303862361 (anytime)



D.M.B. Plastering

All aspects undertaken
*Interior. Exterior. Plastering. Rendering.
Coving. Ceilings. Wall. Floors
Finest quality assured. CSCS Certified.*
30 years experience.
Free estimates. Reliable service. Fully insured.
Call **David** on **07818 607209**

Ewin Electrical

Contact Simon for any electrical maintenance, refurbishments or upgrades with a friendly, clean and professional approach to work
07891103065

info@ewinselectrical.co.uk www.ewinselectrical.co.uk



To advertise in this space for **£9.50 per month**
(or **£95 per annum, 2 months free**)

please contact
Peter Barnes
pbarnes20@icloud.com 01303863737
/ 07808775302

SNIPPERS & CLIPPERS UNISEX HAIR SALON

APPOINTMENT NOT ALWAYS NEEDED

WEDDINGS & SPECIAL OCCASIONS

SHELLAC NAILS

FREE WIFI

GENTS WELCOME

4 Station Road, Lyminge
Folkestone
Kent, CT18 8HP

01303 647 222

info@snippersandclippers.co.uk

Find us on
Google+

Find us on:
facebook®



KJB GARDEN SERVICES

Weeding, Pruning, Mowing, Hedge
Cutting & General Maintenance
01303 862181 or **07704 989 402**
Over 35 years experience

House Clearance covering South East Kent.....and beyond!
CAROL CREES CLEARANCES



- Est. over 30 years
Full/part house clearance
Fair prices paid
Antique/Vintage/Retro/Modern
Registered rubbish carrier

Contact **Simon Cullen** on **07745 421680** or **sijnzo@aol.com**

East Kent Foot Care

www.eastkentfootcare.co.uk

07745 532075

**Podiatry, Chiropody,
Foot Health**

Treating and managing foot
and nail conditions, corns,
callus, insoles, ingrown nails,
diabetic foot care



Total garden care for all your needs

TIM MILLETT

Grass Maintenance, General Gardening, Small & Medium
Size Tree Work, Stump Grinding and Wood chipping
Fencing Repairs & New Installations
Turfing, Hard & Soft Landscaping
Free Estimates - Fully Insured

07752 880583

Email: **info@tmhorticulture.co.uk**

N.P.C.

Domestic Appliance Services

*Service and repair of washing machines, tumble driers,
dishwashers, cleaners and small electrical work.
For a prompt and friendly service*

Call Neil Collard 01303 892234 or 07798716044
or Google me on Yell.com



**Your Local Electrician
For all your electrical needs**

- 18th Edition/Part P Registered
 - Insured & all work guaranteed
 - All electrical work carried out including EV charging points
 - Covering Lyminge, Etchingill & surrounding villages
- Call for a free, no obligation quote and to discuss your electrical requirements.

Proud members of
Checkatrade.com
Where reputation matters



07878 457018

01303 814372

info@hughes-electrical.co.uk www.hughes-electrical.co.uk

JON DAUGHTERS - Local Builder

All aspects of general building works undertaken including: roofing, kitchens, bathrooms and small extensions
Trading for over 30 years Free quotes, no obligations, fully insured
Telephone: 01303 863371 Email: daughters777@hotmail.co.uk



LYMINGE THEN AND NOW

Our monthly look at how Lyminge has changed over the years, with thanks to Lyminge Historical Society.



Apart from the tarmac on the road and the street furniture, this is a view that has hardly changed at all, not just in the 120 years between these two photographs but even in the last 200 or 250 years. To the right, on the corner where Teddars Leas Road joins the main road are the semi-detached houses now known as Rock Cottages. In 1840, this building was shown in the Tithe Survey with a large barn nearby (this was demolished in the early 20th Century). Whether the barn itself was lived in we don't know, but in the Census of 1841, this property was occupied by a farm bailiff and three further households of agricultural labourers, comprising in total 14 adults and 7 children. The early 17th Century (or possibly older) house on the other side of the road, now known as Tudor Cottage, was a tearoom in the early 20th Century and prior to that the village shop. The Census of 1841 shows there were 3 households of agricultural labourers living in this cottage or the surrounding outbuildings comprising 8 adults and 14 children. This shows how the rural poor of this time lived in very crowded spaces. The dramatic reduction in population density is something we don't always think about when viewing what superficially appears to be a largely unchanging scene.



Mount Pleasant Lights

2024 will be the 10th year we have lit up our houses for charity. This year's total is £4000. In our very first year we raised £650!

Our thanks go out to not only the visitors who donated so generously, but also the homeowners for such splendid displays and not forgetting the local residents who tolerated the extra cars and visitors. Since we began collecting donations nine years ago, we have raised £28,500. Once again our thanks to one and all.

*Paul & Graham,
Mount Pleasant Close*

On Facebook, Annie Berbiers recently wrote: "As a book lover and a prolific reader it absolutely pains me to see the state of the Lyminge phone boxes sometimes. Every now and then I go and see what's in there, but I also try and have a little tidy up.

Today there were two black bags thrown in there and two soaking wet cardboard boxes where everything inside was completely soaked and mouldy. In the black bags were half filled out colouring books, ripped and broken books and instruction manuals for someone's cooker. I felt like I'd opened someone's recycling! I've taken everything non salvageable to be recycled. And had a tidy up.

It's such a clever idea to turn phone boxes into 'help yourself book shops'. Those phone boxes are painstakingly repainted, they've been shelved and made so nice, please respect the hard work that's gone into them. And respect the books too - if you put books on a wet floor they won't survive. If you throw loads of bags into there it ruins it for everyone else just wanting to find a good book! Just take five minutes to put your donations on the shelf, if there's not enough space pop them down the road to the AgeUK Charity shop.

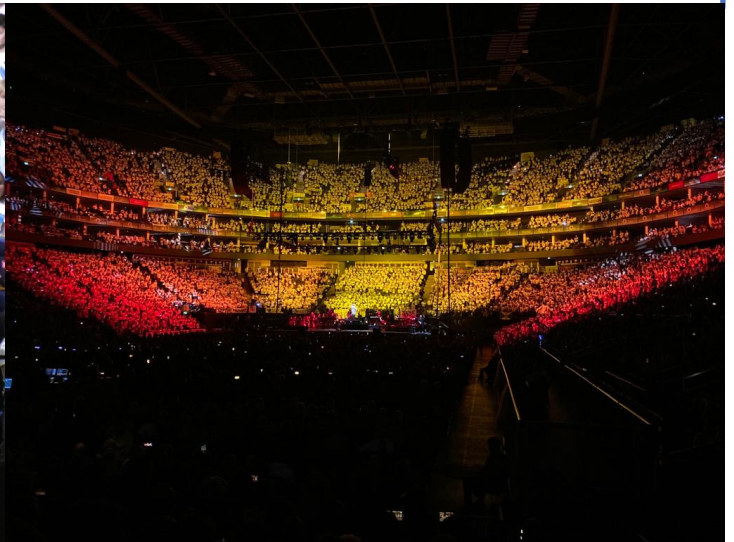
Anyway, I encourage everyone to visit the phone box when passing today (maybe don't donate any more books just yet as it's very full) but pick one - free up some new space. There are some great books in there."



Lyminge Young Voices at The O2 Arena

After rehearsing since September the talented children of Lyminge Primary School performed at Young Voices in the O2 Arena on Tuesday 16th January. They contributed to the total choir count of 9107!

It was an amazing experience with fantastic feedback from the 84 parents, friends and family that attended. "It was absolutely amazing seeing that many children sing together! What an experience! The children absolutely loved it! Thanks so much for giving them such a wonderful experience xxxxx"



POST-CHRISTMAS CELEBRATIONS



Lyminge Association's belated Christmas Dinner at The Coach and Horses



Lyminge Friends' January lunch at the Black Robin pub in Kingston