



# THE LYMINGE NEWSLETTER

For the communities of LYMINGE, ETCHINGHILL, RHODES MINNIS and POSTLING

December 2023

Produced by  
THE LYMINGE ASSOCIATION  
[www.lyminge.org.uk](http://www.lyminge.org.uk)

From The Lyminge Association

**The Lyminge Association Committee  
wish you all a very enjoyable  
Christmas and hope that  
the New Year proves to be full  
of good health and happiness!!**



As in previous years, The Lyminge Association is happy to confirm that Santa and his willing elves will be personally delivering Christmas presents to children in their homes on the evening of Monday, 18th December.

Presents may be left at The Methodist Church, Church Road, Lyminge, CT18 8JA on either Saturday, 9th or Saturday, 16th December between 10am and 4pm only. Sorry - no other dates or times!! A receipt will be given for each bag of presents deposited.

The parcels need to be well wrapped and **CLEARLY LABELLED WITH THE RECIPIENT'S NAME AND ADDRESS including POSTCODE.**

A small charge of £2 is made per address; there is no limit to the number of presents per household, but they all need to be clearly marked with the recipient's name and address.

The area to which Christmas presents will be delivered include Lyminge, Etchinghill, Rhodes Minnis, and Postling but regrettably excludes the far end of Woodland Road and Elham.

Please note, that because of the Christmas holidays, the January edition of the newsletter will be delayed until early January 2024





# Margaret Saunders' Meanderings

Taking advantage of a one day respite amongst the wet and windy days of Storm Babet I set off with no particular destination in mind, merely the need to cut a few small yew twigs for a project I had embarked upon. Knowing a hedgerow which contains just what I want I set off along Brady Road to Yew Tree Cross where I take the footpath northwards where it runs parallel to the Valley road. It has been a little while since I walked this way and I am surprised to see that considerable clearing has taken place – all the naturally re-wilded area has been levelled back to the original fence line, for some twelve to fifteen feet in most places. Wire fencing is in the process of being installed and a new gate has been erected at the end where the path leads through to the road. Guessing that the type of fencing might indicate that the field is to be used for animals, I feel sorry, as this field in Spring is a delightful sight, full of wild flowers and tall grasses. The yew tree I was looking for has been drastically cut back, but I manage to find a few sprigs of greenery.

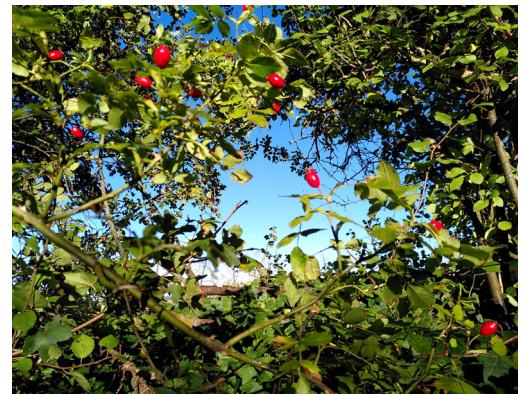


At this point I decide to continue the walk across the road and down towards the Nailbourne. New growth is springing up in the field to my right, light green shoots already several inches tall in their straight rows and to my left, sheep happily grazing in a field where I have not previously seen sheep. Floating cobwebs catch my face as I walk. Silent and almost invisible the Nailbourne runs beneath the Summer's growth of vegetation. This silence is repeated all around with the exception of the cry of crows and now and then the cattle from Stonebridge Farm lowing on the opposite hill.

Turning left I follow the narrow sheep track. Black faced sheep continue grazing, ignoring my presence close to them. I pass a field maple tree, laden with seeds, waiting to propel themselves as far as possible in the tree's efforts to replicate itself. Dandelions are still in flower growing next to the 'clocks' of previous flowerings. A gathering of fungi, small and delicate, hides amongst the grass next to a fresh molehill and single specimens of a different species push upwards, barely visible in their camouflage colour of pale brown. Small flat bottomed clouds dot the sky, leaving plenty of vibrant blue space

for the warm rays of the sun to shine almost continuously.

On reaching Shuttlesfield Lane I turn right and decide to walk up the lane to where I know the hedgerows stop and gaps open up onto the fields either side. At this point, the lane is deeply sunken, letting in only the occasional patch of sunlight, where insects dance. Clods of farmyard manure, rich and dark, have tumbled onto and along the lane. I reach the gaps and now see that the field on the north side was the destination for the manure, which lies in a long heap waiting to be spread over the stubbly field. Straight ahead of me is a pylon, but apart from that, the view is beautiful and varied: fields in subtle Autumn shades and textures; hedgerows still green and full; undulating land glowing in the late October sunshine. I breathe deeply, enjoying the view and inhaling the season's fragrances, sharpened by the recent rain. If I were an artist I would paint this scene, but as I am not, words must suffice.

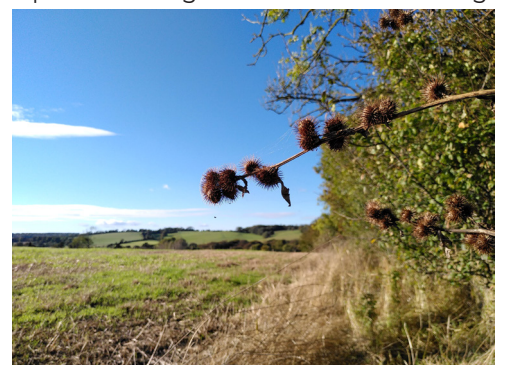


To the south, the view from the field entrance is completely different as the land rises making a long view in this direction impossible, although to my left and right the view opens up. Straight ahead the path of sunlight reveals a shimmering mass of thousands of fine cobwebs which are shining as they ripple in the breeze, the golden stubble tops holding them proud of the soil, creating a precious mixture of gold and silver. I wonder at the ceaseless activity of the spiders in their endless endeavours to catch food. Brush-stroke clouds have been painted across the sky, with only the very tips of cumulonimbus clouds showing above the brow of the hill, towards the coast.

Taking off my coat, I sit with my back to the hedge facing the sun, grateful for its warmth. Within seconds, tiny spiders, two black and three brown, begin an ascent up my legs and over the page on which I am writing a few notes. Next to me, spiky burdock seeds wait to be transported via human or animal by



clinging onto soft surfaces, but at present they are home to more fine spiders' webs, from which two small spiders dangle in the hope of catching prey. Sloes slowly ripen behind me, perfectly placed facing south.



Reluctantly, as the breeze begins to pick up and the sun lowers in the sky, I make my way back along the lane and the valley. Two golden sycamore leaves catch my eye, glowing amongst the damp dark leaves, back-lit by the weakening afternoon sun. Shadows are noticeably lengthening as we move into the last quarter of the year and if the clear skies continue, it will be a chilly night with a fresh morning to follow.

# Diary of Forthcoming Events

This page is printed to give readers and organisers the opportunity of planning events without clashing with existing ones, which are already in the 'diary'. It is not intended as a means of advertising and we take no responsibility for errors or omissions. Acceptance is at the discretion of the editor. Please send your updates by email to pbarnes20@icloud.com.plus.com or via methods outlined on Page 4.

Location and name codes below:

## One-Off Events

Date	Time	Event	Where	Tel. No.	Date	Time	Event	Where	Tel. No.
01/12/2023-05/01/2024		Mount Pleasant Christmas Lights	Mount Pleasant		22-Dec	7pm	Christmas Carols	C&H	
02-Dec	3pm	Haywardians Christmas Concert - donations for Maya	LMC		24-Dec	6pm	Carol Service by torch light	LMC	
03-Dec	6.30pm	ERA AGM	EVH	07544 670363	25-Dec	11am	Christmas Day Service led by Rev Gill Songer	LMC	
06-Dec	6pm	Christmas Carol Evening	AUKL	269602	25-Dec		Christmas Day Lunch	LVH	Ring in advance 07704105854
08-Dec	7pm	Music on Friday Christmas Concert	LPC		<b>2024</b>				
09-Dec	10am	Christmas Craft Fair	LVH		23-Mar	7pm	Let your hair down with the local group - The Undecided	LVH	
09-Dec	7pm	The Big Fat Christmas Quiz	EVH	07514758936	06-Apr	9am	Spring Garage Sale		
16-Dec	4pm	Cantores Christmas Carol Concert	TC		13-Apr	10am	Spring Stream Clean	TF	
18-Dec		Christmas Parcel Delivery		863737	18-May	7pm	Late Spring Quiz	LVH	

## Weekly Events

Day	Time	Event	Where	Tel. No.	Day	Time	Event	Where	Tel. No.
Mon	9.30am	Dementia & Me Unit	AUKL	269602	Wed	10am	Pilates	TC	07825109670
Mon	10am	Bridge Club	LBC	863177	Wed	10am	Baby/Toddler Group	EVH	07817777975
Mon	10am	Clear Ears	AUKL	269602	Wed	10.30am	Pilates	RMV	07944028445
Mon	10.30am	Lyminge Larks (Singing)	LMC	07951572920	Wed	11am	Singing For All	AUKL	269602
Mon	10.30am	Chromatic Greys Art Class	EVH	07783575802	Wed <sup>5</sup>	3pm	French Conversation	Call	862972
Mon	10.30am	Main Cog Stim Therapy (MCST)	AUKL	269602	Wed	7pm	Tayne Centre Circuits	TC	07925982995
Mon	5.30pm	Pilates	EVH	07951608008	Wed	7.30pm	Cantores Dominicae Choir	LVH	07840796383
Mon	6.30pm	Ballroom/Latin/Salsa Dancing	TC	07966751991	Thurs	9.30am	Dementia & Me Unit	AUKL	269602
Mon	6.30pm	Judo Club	LVH	862946	Thurs	10am	Lyminge Morning Art Group	EVH	01303211364
Mon	7pm	Pilates	EVH	07951608008	Thurs	10am	Carers' Brunch	AUKL	269602
Mon	7pm	Yoga	RMV	07977503897	Thurs	10.15am	Baby Rhyme Time	LL	03000413131
Tues	9am	Seated Yoga	AUKL	269602	Thurs	10.30am	COGS	AUKL	269602
Tues	9am	Tai Chi Qigong	EVH	07402203239	Thurs	11.45am	Streetz to Streetz (fish and chips)	AUKL	07955926835
Tues	9.30am	Dementia & Me Unit	AUKL	269602	Thurs	12.30pm	Dementia Café	AUKL	269602
Tues	10am	Lyminge Baby & Toddler Group	TC	07870405567	Thurs	2pm	Lyminge Afternoon Art Group	TC	07870494644
Tues	10am	Painting and Drawing	AUKL	269602	Thurs	3.30pm	Pilates	EVH	07944028445
Tues	10am	Pottery	AUKL	269602	Thurs	5pm	Pilates	TC	07951608008
Tues	10.30am	Poetry Group	LL	03000413131	Thurs	6.15pm	Pilates	TC	07951608008
Tues	10.30am	Cognitive Stimulation (COGS)	AUKL	269602	Thurs	7pm	Short Mat Bowls	LVH	863842
Tues	11.45am	Pilates	EVH	07834839801	Thurs	7.30pm	Ballroom and Latin Dancing	EVH	07967979610
Tues	1.30pm	Pickleball	EVH	863819	Fri	8am	Chiropody (appointment only)	AUKL	269602
Tues	5pm	Pilates	EVH	07944028445	Fri	9am	Pilates	AUKL	269602
Tues	1pm	Active Minds Club	AUKL	269602	Fri	9.30am	Dementia & Me Unit	AUKL	269602
Tues	6.45pm	Short Mat Bowls	LVH	863842	Fri	9.30am	Nikki Barratt Art Group	EVH	07870494644
Tues	6pm	Board Games Night	Coffee Cabin		Fri	10.15am	Talk Time	LL	03000413131
Wed	8am	Pilates	TC	07951698008	Fri	10.30am	Main Cog Stim Therapy (MCST)	AUKL	269602
Wed	9am	All Day Breakfast	AUKL	269602	Fri	10.45am	Movement to Music	AUKL	269602

## Monthly Events

When	Time	Event	Where	Tel. No.	When	Time	Event	Where	Tel. No.
1st Mon	2pm	RBL, Elham Valley Branch	Methodist Church, Elham	862508	Last Wed	7.30pm	Quiz Night	C&H	01303901011
3rd Mon	7pm	Etchinghill Cinema Club	EVH	07544670363	3rd Thurs	7.30pm	LA Committee Meeting	TC	07840796383
Last Mon		Parish Council Meeting	SNL	07715221705	Last Thurs	1.30pm	Dementia Café	AUKL	269602
1st Tues	2pm	Library Reading Group	LL	863879	4th Fri	7.30pm	Beetle Drive	RVH	862616
1st Tues <sup>3</sup>	7.30pm	LHS Talk/Event	TC	863879	Last Fri	1.30pm	Team Quiz	AUKL	269602
2nd Tues	2pm	Library Reading Group	LL	03000413131	2nd Sat	10am	Postling Ch. Coffee Morning	PC	863536
3rd Tues <sup>2</sup>	7.30pm	Gardeners' Society	TC	07703149008	2nd Sat	10am	Ethelburga Quilters	EVH	
Last Tues	10.30am	Lyminge Poetry Group	LL	03000413131	4th Sun	10am	Farmers' Market	LVH	
1st Wed	10.30am	Lyminge Friends	TC	862598	Last Sun <sup>**</sup>	10am	Springrise Canine Care Pet	EVH	07582407637
4th Wed	2.30pm	RM Circle	RVH	862913					

<sup>1</sup> In term time only <sup>2</sup> Except Jan and Feb <sup>3</sup> Except Jan, Feb, and trip in Aug <sup>4</sup> Except Aug and Dec <sup>5</sup> Not held in August <sup>\*\*</sup> Every three months

**AUKL**: Age UK Lyminge; **C&H**: Coach & Horses; **EVH**: Etchinghill Village Hall; **ELVH**: Elham Village Hall; **ERA**: Etchinghill Residents' Association; **ES**: Elham Square; **EVLT**: Elham Valley Line Trust; **JF**: Jubilee Field; **KH**: Korf House; **LB**: Laing Bennett; **LBC**: Bowls Club; **LL**: Library; **LMC**: Lyminge Methodist Church; **LPC**: Lyminge Parish Church; **LPS**: Lyminge Primary School; **LVH**: Lyminge Village Hall; **LW**: Lord Whisky; **NP**: Nailbourne Court; **PC**: Postling Church; **PH**: Lord Whisky, Park House; **PVH**: Postling Village Hall; **RVH**: Rhodes Minnis Village Hall; **RMC**: Rhodes Minnis Church; **RMCS**: Rhodes Minnis Cat Sanctuary; **RR**: Rigden Room; **SMVH**: Stelling Minnis Village Hall; **SNL**: See Newsletter for info; **SP**: Sibton Park; **SPCC**: Sibton Park Cricket Club; **TC**: Tayne Centre; **TF**: Tayne Field; **WF**: Well Field





## St Mary and St Ethelburga Parish Church, Lyminge

### Sunday 3rd December - Advent

Canterbury 11am Elham Valley Group Advent Eucharist in the Cathedral

### Sunday 10th December - Advent 2

Lyminge 8am Holy Communion- BCP

### Sunday 17th December - Advent 3

Lyminge 10am Holy Communion - CW1

6pm Candle lit Service of 9 Lessons and Carols

Paddlesworth 6pm Evensong

### Sunday 24th December - Christmas Eve

Lyminge 3pm Children's Crib Service

11.30pm Midnight Holy Communion

Paddlesworth 11.30pm Carol Service - meet in Cat and Custard Pot

### Sunday 31st December - New Years Eve

Paddlesworth 10am Benefice Holy Communion

### BENEFICE ADVENT COURSE

#### Wednesday 6th and 13th December

Lyminge 6pm followed by Refreshments

#### Sunday 7th January 2024

Lyminge 10am WOW Service

Paddlesworth 6pm Evensong

If more information is required please contact the Church Wardens,  
Derek Smith 01303 862508 or Mike Chinneck 01303 863911

### Postling Church Services

Sunday 3rd December No Service

Sunday 10th December 5.30 pm Quiet Evening Service

Sunday 17th December No Service

Monday 18th December 7.30pm Advent Carol Service with the Shepway Singers

Wednesday 20th December 7pm Advent meditation

Sunday 24th December 11.30am Crib Service in the Barn at Pent Farm

Monday 25th December 9.30am Holy Communion

Sunday 31st December 9.30am Morning Prayers of the New Year

## Lyminge Methodist Church

A warm welcome awaits you at the following services to be held at **11am**, followed by a time of refreshment and fellowship.

**3rd December 10.15am** Valley Service at **Elham**

**10th December** Mr. Roy Hollands

**17th December** Rev. Gill Songer (incl. Holy Communion)

**24th December 6pm Carols by Candlelight**

**25th December Christmas Day:** Rev. Gill Songer

**31st December 10.30am** Circuit Service at Hamstreet

**Wishing everyone the joy of Christmas and a peaceful New Year!**

## Rhodes Minnis Chapel

A warm welcome is extended to anyone who wishes to join us for the following services at 9.30am in our small and beautiful Chapel and to share fellowship after the services over coffee and biscuits.

**3rd December Valley Service 10.15am** at Elham

**10th December** Mr. Roy Hollands

**14th December**

(Thurs) **7pm Candlelit Carol Service** led by Rev. Gill Songer

**17th December** Rev. Gill Songer

**24th December** Rev. Alan Hewitt

**No Services on Christmas Day or 31st December**

**7th January Valley Covenant Service 10.15am** at Lyminge

An **Advent Course**, led by Rev. Gill Songer is being held at 2pm on Mondays, 4th, 11th & 18th Dec. A warm welcome is extended to all.



## Christians in Lyminge

**2nd December - Haywardians Concert** for Maya Cancer Appeal at 3pm in the Methodist church. There will be a retiring collection.

**8th December - Music on a Friday** will be hosting A Christmas Concert at 7pm in the Parish Church.

**17th December - Carols by Candle Light** will be held at the Parish Church at 6pm.

**24th December - A Crib service** will be held at the Parish Church at 3pm

**A Torch Light Carol Service** - will be held at the Methodist Church at 6pm

**Holy Communion** - will be held at the Parish Church at 11.30pm

*What's a parent's favourite Christmas carol?*

**Silent Night!**

## Lyminge Newsletter

**Terms & Conditions: Copy deadline for next edition - 18 December 2023**

Please email your copy to the editor ([pbarnes20@icloud.com](mailto:pbarnes20@icloud.com)). Your payment must be received before your article or advert can appear in the Newsletter. Invoices will be issued and should be paid ASAP either by BACs, cheque, credit card or cash (details on invoice). **Business adverts** cost from £9.50 per month or £95.00 per year. **Personal and charity adverts and articles** from £3 per month, or £30.00 per year. The annual rate offers 12 entries for the price of 10. Please make cheques payable to '**The Lyminge Association**'. If you do not have email, a typed paper-copy may be left with the payment at the Library. Newsletter is printed by Canterbury Print & Mail.

*Lyminge Association accepts no liability for the accuracy of the advertisements or subsequent actions arising in conjunction with advertisers in the newsletter.*

**Further details from Peter Barnes (editor) on 01303 863737 or [pbarnes20@icloud.com](mailto:pbarnes20@icloud.com)**



China  
China



圣诞节快乐  
MERRY CHRISTMAS



# Open Christmas Day

Restaurant and Takeaway  
12 noon to 7pm

Eat as Much as You Like  
& select from over 200 dishes.

£38 per person and £20 per child (under 1.2m)

To book your table please pop in or phone  
01303 863 288 or 07539 200 804

We are closed from the 26th to the 28th of December  
and re-open on the 29th of December.



LA December Issue 2023

31/10/2023

THE 19TH HOLE

# GOLF

*Simulator*



BOOK NOW

- STAG/HEN FRIENDLY
- SOLO OR GROUP BOOKINGS
- FOOD/DRINK PACKAGES AVAILABLE
- CUSTOM BOOKINGS WELCOME



BOOK HERE

For more information :  
FB/INSTA  
@the19thholelyminge

The Coach House  
LYMINGE, KENT  
CHURCH ROAD  
CT18 8JA

Until the end of 2023, the charge is £10 per hour with up to four people playing at once. This is a special offer while the booking process is put in place.

Editor: pbarnes20@icloud.com



## CHRISTMAS CRAFT FAIR



**Lyminge Village Hall**

**Woodland Rd**

**Lyminge CT18 8EW**



**Saturday 9<sup>th</sup> December 2023**

**10am-4pm**



**Refreshments available**

**and free parking!!**





# The Coach and Horses

## Christmas Menu

27th November - 24th December  
£19.95 per person



### Starters

Smoked salmon mousse with herby crostinis.  
Goats cheese and butternut squash tartlets  
Tomato soup with warm focaccia  
Mini charcuterie board

### Mains

Turkey, beef, stuffed veggie toast or vegan toad-in-the-hole  
served with seasonal vegetables, roast potatoes, stuffing, pigs in blankets (v, ve),  
Yorkshire puddings, cauliflower cheese and gravy

### Desserts

Christmas pud with cream, brandy butter or sauce  
Boozy Sherry trifle  
White chocolate and macadamia crème brûlée  
Cheese board

~~~~~

### Christmas Carols in the pub on Friday 22nd December from 7pm.

Mulled wine and minced pies will be available

~~~~~

### Also

#### *Every Friday is Fish Fryday*

£10 for either Cod, chips and peas, Haddock, chips and peas, Fish pie with vegetables,  
Scampi chips and peas or Fish burger and fries

#### *Music Bingo - second Wednesday of every month*

with prizes for four corners, a line and full house. Also money donated to the charity of  
the winner's choice

#### *Quiz night - last Wednesday of the month*

a prize to the winning team with money donated to the charity of the winner's choice.

#### *Local Stroke Support Group*

meet in the pub 10-12noon every other Monday with next meeting 4th December

### Coming Soon

#### *Curry Day will be a Saturday*

- different curries can be eaten in or taken away for only £10

#### *Bingo Night*

- more info coming soon

***Please remember the pub is open and the heating is on. So don't sit at home feeling cold or alone - we are here to support the community. It's a tough time for everyone. So let's work together.***

***The Coach & Horses staff would like to wish everyone a very Merry Christmas and a Happy New Year***



## Etchinghill Update - December 2023



**AGM – SUNDAY 3rd DECEMBER at Etchinghill Village Hall. Doors open at 6.45pm for a 7pm start.** This is a public meeting where we discuss matters affecting the local area and vote for new ERA committee members going into 2024. If you have some ideas that would support the local community, or would simply like to help by joining our friendly and proactive committee, please contact the Chairman, David McCombe, (see details below), or come along to the meeting, which lasts for about an hour. Refreshments will be provided.

**CHRISTMAS MARKET IN BRUGGE.** The coach trip to Brugge on Saturday 2nd December is fully booked. All 53 tickets are sold and I am sure a brilliant time will be had in the Christmas Markets and restaurants in Brugge city centre. Thank you to everyone that has supported this event and we will report back in the January newsletter as to how it all goes, **John White – Village Hall Chairman.**

**THE BIG FAT CHRISTMAS QUIZ – Saturday 9th DECEMBER, 7pm start.** This will be held at Etchinghill Village Hall. Maximum of 6 per table at £5 per person. The price includes Christmas crackers and mince pies together with an enjoyable evening to get us in the Christmas spirit. There will be prizes for the winning team plus a raffle at the interval. Bring along your own refreshments and nibbles, although not mince pies! This is always a well supported evening, so to book your table please phone Anna on 07514 758936 and pay on the night, **John White – V.H.Chairman.**

**ETCHINGHILL RESIDENTS ASSOCIATION (ERA) QUIZ NIGHT.** The ERA would like to thank everyone who attended and contributed to our Autumn Quiz. We are delighted to report that, after deducting £80 for our running costs such as hall hire, advertising, raffle prizes, a net £300 was raised on the night, a great result! See photos on P27.

**The ERA wishes everyone a very MERRY CHRISTMAS and a happy, healthy and rewarding 2024!**  
**Chairman - David McCombe, phone: 07939 076617, email: dmccombel@gmail.com**  
**Website: www.etchinghill.info Facebook: Etchinghill Residents**  
**News contact: Jacqui Blandford – 07543 966830 or email: jacqui.blandford@gmail.com**



Hythe Aqua Swimming Club has vacancies for potential competitive swimmers Level 7 and above. Join a Club with a nationally accredited swim programme. Lessons/Coaching sessions are held on Tuesday & Thursday evenings at Hythe Pool.

We also welcome adult length swimmers to our Adult training on Tuesdays & Thursdays at 9.00pm

**To book your place**

Email: [hytheaqua@btinternet.com](mailto:hytheaqua@btinternet.com) or checkout our website: [www.hytheaqua.org.uk](http://www.hytheaqua.org.uk) or [F/book](#)

## MUSIC ON A FRIDAY



Please join us for  
**A CHRISTMAS CONCERT**

at the [Lyminge Parish Church](#)  
on the **8th DECEMBER 2023** starting 7pm

Mince pies, mulled wine and music - all free.

A good start to the Festive Season - we look forward to seeing you there?

In aid of LORD WHISKY SANCTUARY FUND (Charity No 283483)  
Park House Animal Sanctuary  
Stelling Minnis CT4 6AN  
Tel: 01303 862622  
[www.lordwhisky.co.uk](http://www.lordwhisky.co.uk)  
E: [lord.whisky@btinternet.com](mailto:lord.whisky@btinternet.com)



We would like to thank our loyal supporters and friends, old and new, who have supported us this year. Your kindness and generosity is very much appreciated. We would also like to thank everyone who has given a loving home to one or more of our animals.

We wish you all a very Happy Christmas and a Peaceful New Year and look forward to seeing you all again in 2024

Visit the Lord Whisky Tea Rooms, Gate Lane, Rhodes Minnis CT4 6XY.  
Open every day from 10am-4pm. 01303 862349

We will be serving **Christmas Lunches** at 12pm on the following weekends: November 25th & 26th, December 2nd & 3rd and December 9th & 10th. £30.00pp. A £10pp non-refundable deposit is required when booking.

We will also be serving **Festive Afternoon Teas** daily from 3rd December until 22nd December. Served between 12pm and 3pm. £20 per person. A selection of sandwiches, scones and cakes with tea or coffee. Vegan & gluten free options available. A £10 deposit is required when booking.



## POSTLING LADIES COFFEE & CAKE MORNING

A huge thank you to helpers and donors from Postling, Lyminge and the local area, who raised a total of £1313 for the Pilgrims Hospice in 2023.

Our fundraisers for the Pilgrims Hospice start again on Saturday 9th March 2024.

## District Councillors' Update - December 2023

From: **Cllr Jenny Hollingsbee** -  
**jenny.hollingsbee@folkestone-hythe.gov.uk**



At the Kent & Medway Police & Crime Panel Meeting on 17 October, I raised the issue of speeding through our villages and I also raised this with the Community Safety Partnership Police Inspector. I understand that random road checks are being undertaken throughout the district which also include speed checks. I will be asking for feedback on this exercise in due course.

**Stagecoach Route No 17** – At a recent lunch, I sat next to the Operations Director for Stagecoach and took the opportunity to discuss the No 17 bus timetable. He was quite optimistic that an evening service could be re-introduced with support of additional funding KCC has received from Government. He will keep me updated.

**Otterpool Park** - The District Council is seeking a strategic partner for the project in order to bring in additional finance. I will be following this closely as it is important that the Council does not lose control of the development and also that the original Charter is adhered to. There is no doubt that this will cause a delay in delivery and we await further details.

**District Wide Carbon Plan** has been published by the District Council and sets out the suggested approach towards a net zero future. The plan can be read on the Council website and is open for comment until 5pm on Friday, 1 December 2023. The consultation details can be found at [folkestone-hythe-consult.objective.co.uk/kse/](https://folkestone-hythe-consult.objective.co.uk/kse/)

Christmas is a time to thank all volunteers and organisations in the Ward for their work and support during the year, and to wish you all a very Happy Christmas and a Prosperous New Year.

Contact: **[Elaine.Martin@folkestone-hythe.gov.uk](mailto:Elaine.Martin@folkestone-hythe.gov.uk)**

F&HDC has made a successful bid and has been awarded a Safer Streets government grant of £335,546.64. The fund will be used to invest in crime prevention initiatives that focus on reducing levels of crime in the district, anti-social behaviour and violence against women and girls.

There has been a very poor take up of the Folkestone and Hythe Green Business Grant Scheme. The grant is to help small businesses to save carbon, become more energy efficient and, in turn save the business money. All the information regarding the scheme can be found on the Folkestone Works website (<https://folkestone.works/>).

F&HDC is continuing progress in looking for a strategic partner for Otterpool Park. Without this extra funding the development of the project would be in jeopardy. It is only looking to enter into agreements with those partners who have a track record of facilitating development at scale, and a commitment to delivering the Council's vision for Otterpool Park.

Just a reminder, all District Councillors have a £3,000 Ward grant available to help fund local community projects. Please contact me or Jenny if you have any projects you would like help funding.

An early Christmas present from F&HDC for you; the Free Parking in Folkestone and Hythe District will be back on the 9th, 16th and 23rd December. Plenty of time to buy those Christmas goodies!

Wishing you all a happy, peaceful and joyous Christmas.



### Rhodes Minnis Circle

We had an interesting talk in October on Deal, Walmer & Kingsdown Lifeboats. The RNLI, run by volunteers, gives a 24hr rescue service around the UK and Ireland. The Walmer station covers an area between Ramsgate and Dover and took part in the Dunkirk Evacuation in 1940. They are called 'The Heroes of the Goodwin Sands' which are particularly treacherous. So far in 2023 they have been launched 34 times.

The Competition was won by Mary with Margaret Woolford 2nd, Daphne 3rd, and Fran 4th.

On the 13th December we are having our members Christmas Party at 2pm with a bring and share Tea and Music by the Ukulele Band.

The Competition is an item beginning with the letter "H". We wish our members and friends a Very Happy Christmas and a healthy and prosperous New Year. There will be no meeting in January.

Many thanks, Marion.

If you require any more information, please contact Marion on 862913

## SPRING MEDITATION COURSE

Next Course

Commencing Saturday 2nd March  
Ending Saturday 27th April 2024

10am – 12.30pm

For 8 Sessions

Location: The Committee Room, Lypne Village Hall

Learn some wonderful skills to keep your mind fit and to help support your health and wellbeing during these difficult times.

For more information and to book a place,

**contact Ellen:**

**Tel: 01303 230604 or 07740 857109**

**Email: [ejgarrard2712@gmail.com](mailto:ejgarrard2712@gmail.com)**







**CHRISTMAS  
LUNCH  
13<sup>th</sup> December  
(Members Only)**

**Season's Greetings**  
and looking forward to meeting up  
on the 13<sup>th</sup> December

**AGM** – Look out for details of the  
date and venue in next month's  
Newsletter

For general information about  
the Gardeners' Society:  
Email  
[lymingegardeners@gmail.com](mailto:lymingegardeners@gmail.com)  
or call Anne on 07703 149008



**Public Notice:** If you own a garden shed,  
please ensure it is locked as there have been  
a few thefts recently in the Lyminge area.



LYMINGE HISTORICAL  
SOCIETY



**Merry Christmas Everyone**

**Our final talk for 2023 is shown below.**  
We look forward to seeing you.

Tuesday 5<sup>th</sup> December (After a short AGM)  
Derek Boughton will talk on *'The Elham Valley Diaspora –  
Meeting folk from around the world through local history.'*

The meeting starts at 7.30pm in the Tayne Centre  
Mince pies and tea/coffee will be served.

After the usual Winter break, we will resume talks on 5<sup>th</sup> March 2024.  
Andrew Richardson: *"Recent discoveries in Anglo-Saxon Kent."*

**!! HOT OFF THE PRESSES!! Lyminge a History Part 13 now  
available !! Great value at only £7.**

This can be purchased at the Library, Lyminge Village Store or direct from  
Daphne on the number below. You can also purchase it at the AGM and talk  
on 5th December. N.B. We now have a card reader for purchase of books and  
payment of Membership Fees.

All *Lyminge a history* publications can be purchased individually through Lyminge  
Village Store, Lyminge Library, or online via our website using PayPal.

Plus: purchase Parts 1-5 as a bundle for £22 or Parts 1-12 for £60\*

Lyminge archaeology chapters in Parts 2,4,6,7,8,10 & 12 for £35\*.

Live locally? You save on postage without going through the web site and using Paypal  
which automatically adds postage. Payment via LHS card reader.  
Contact Daphne, phone no. below.

To take advantage of the offer please call Daphne Andrews on  
01303 862865. N.B. This bundle offer is not available from  
The Library or Lyminge Village Store.\*Postage and packaging extra.

Email: [lymingehistoricalsociety@gmail.com](mailto:lymingehistoricalsociety@gmail.com)  
Website: [www.lymingehistoricalsociety.co.uk](http://www.lymingehistoricalsociety.co.uk)  
Facebook: [www.facebook.com/Lymingehistoricalsociety](http://www.facebook.com/Lymingehistoricalsociety)

Editor: [pbarnes20@icloud.com](mailto:pbarnes20@icloud.com)



**The Christmas Day Lunch Club**

Was set up in 2011 to provide those who  
are by themselves, an unforgettable  
Christmas Day.

On your own or just the 2 of you?

The Christmas Day Lunch Club is now  
taking bookings for those that live in and  
around the surrounding area of Lyminge  
and the Elham Valley. We provide a 3-  
course meal, pack up tea and most of all,  
company at Lyminge Village Hall.

Transport can be provided.

Phone 07704105854



**THE TOWER THEATRE FOLKESTONE**



**THE  
JIVE  
ACES**

Together for over 25  
years, The Jive Aces  
have been keeping  
the show on the road  
for three decades and  
are renowned  
worldwide for their  
high-energy live  
show, having toured  
in over 40 countries!

**Friday 9 February 7.30pm**

**BOX OFFICE 01303 223925 or [towertheatrefolkestone.co.uk](http://towertheatrefolkestone.co.uk)**



**TONY STOCKWELL -  
PSYCHIC MEDIUM**

Remarkably compelling, amazingly  
detailed and always humorous! The  
popular star of TV's Street Psychic,  
Psychic Private Eyes and Psychic  
Academy, Tony Stockwell has a long  
established credibility as one of the  
top Intuitive Mediums

**Wednesday 28 February 7.30pm**

**The Tower Theatre, North Road, Shorncliffe, Folkestone CT20 3HL**

Registered Charity 1180504

Tel: 01303 863737



**Elham**

Re-opened Kings Arms

**30+ STALLS**

**Christmas food & craft festival**

VILLAGE SQUARE & CHURCH  
Sunday 10 December  
11am - 2pm

Chancel Cafe

Donkeys

Santa's Grotto  
11am to 12.30pm

Handmade Crafts

Raffle

Hot chestnuts

LOCAL PRODUCE  
CHEESE - BREAD  
OLIVES - CAKES  
SMOKED FISH - EGGS  
VEGAN - CHUTNEYS  
VEGETABLES  
GATEHOUSE FARM  
PIES - SAUSAGES  
& MORE...

Supported by  
colebrook sturrock.com

For more information: Debbie Francis, Elham Farmers' Market manager,  
elhamfarmersmarket@gmail.com KFMA.org.uk/elham facebook.com/elhamfarmersmarket



## Lyminge Friends

A new Committee has been elected for Lyminge Friends and they will take over with effect from the AGM on 7 February.

**The Christmas Lunch Party** will be taking place on **Wednesday, 6 December**, in the Tayne Centre, if you would like to come along please call and book a place (£7) – 862015.

Finally in 2023, we meet for our **New Year's Eve Lunch** in China China on **Sunday, 31 December**. Please call to add your name to the list if you haven't already done so – 862015.

Dates for the diary – On **10 January** we will meet for a pre-booked Lunch at **The Black Robin Pub, Kingston at 12.30pm**. If you would like to join us please call – 862015.

This is in place of a meeting in January.

The **Annual General Meeting followed by a Music Quiz** will take place on **Wednesday, 7 February 2024** in the Rigden Room of the Tayne Centre. There will also be a Raffle (Please note – we are limiting this to 3 prizes only). **Everyone welcome - Entry is £4.**

We are a friendly social group and welcome new members so just drop into a meeting, or if you'd like to talk to one of us first, please call 07904 157897.

## Fifth Trust Update

[www.fifthtrust.co.uk](http://www.fifthtrust.co.uk)

Quick! The Christmas craft fair is on 2 December at our Elham Valley Vineyard between 11am-3pm. Browse a range of bespoke gifts including Christmas cards, wrapping paper and gift tags, plus jams, chutneys, ceramics, woodwork and more, all made by our students with learning disabilities. There will be lots of food and our very own wine to enjoy. The Vineyard Garden Centre will be selling real Christmas trees, plus a range of other festive plants and wreaths.



If you miss the fair, trees etc. will be on sale until Christmas.

We will also be running our Big Give Christmas Challenge from midday 28 November to midday 5 December with the hope to raise funds for specialist music equipment which will improve our music sessions. All donations made to the campaign are match funded and doubled, so it is a great time to support our charity. We will be on-hand at the craft fair to help with any queries. Remember - one donation, twice the impact! You can view our campaign page here: [www.tinyurl.com/TFTgive](http://www.tinyurl.com/TFTgive). Happy Christmas!

## BOYKE MANOR COTTAGES

Family-run holiday lets that have been running for 12 years

Are you looking for somewhere for a break or a longer stay?

- Two cottages available in the Elham Valley (Ottinge)
- One sleeps 6 and the other sleeps 4
- Can be let individually or together
- Fully equipped holiday cottages rated as 4 star

Provides relaxing holidays in a peaceful rural setting, close to the coast and with a wide range of places to visit in close proximity.

Ideal for a family getaway/holiday or short stays in between house purchases/whilst renovations are being undertaken.

Much more economical than hotels and the accommodation offers very high standards.

For further details, contact Paul on 07860 452640 or visit [www.boyke-manor-cottages.co.uk](http://www.boyke-manor-cottages.co.uk)

## Coach & Horses

**CHECK OPENING HOURS**

For bookings and any help needed, please phone

01303 901011 or check

Facebook page

'Coach & Horses'



## Lyminge Judo Club

(Bushido Club registered)



We are a small friendly village club. We welcome and encourage both novices and skilled players and train every Monday evening at Lyminge Village Hall from 6.30pm. Open to all ages from 6 upwards - no upper age limit.

Juniors £2.50 per week; Seniors £3.50 per week. First session free, with no obligation.

Contact: Craig Munn email: [craig.munn1@yahoo.com](mailto:craig.munn1@yahoo.com)

Facebook: [www.facebook.com/Lymingejudoclub](http://www.facebook.com/Lymingejudoclub)





**Volunteer with Age UK Hythe, Lyminge and Ashford**

*Can you make a difference?  
Do you like helping others?  
Do you have any spare time?*

There are a variety of roles and times to volunteer so there really is something for everyone.

Supporting your community for just a couple of hours a week can make someone's day.

For further information please contact Sonya Knight [vc@ageukhla.org.uk](mailto:vc@ageukhla.org.uk) or contact 07342 634710.

Registered charity number 1125274. Company number 6589817. © Age UK Hythe, Lyminge and Ashford 2023.

# ACTIVE MINDS CLUB



**Every Tuesday from 7th November**

Age UK Lyminge, Everist Court, Station Road, Lyminge CT18 8HQ

**£12 per session**

**1pm-3pm**



For enquiries or to book please call Jo Gregory on 01303 269602 or email [dementialead@ageukhla.org.uk](mailto:dementialead@ageukhla.org.uk)



- 'M'emory
- 'IN'clusive
- 'D'ementia
- 'S'timulation

Registered charity number 1125274. Company number 6589817. © Age UK Hythe, Lyminge and Ashford 2023.

## AGE UK - LYMINGE



ALL CENTRES WILL BE CLOSED ON THE FOLLOWING DATES...



Christmas Opening Hours

- Saturday 23<sup>rd</sup> December 2023
- Sunday 24<sup>th</sup> December 2023
- Monday 25<sup>th</sup> December 2023
- Tuesday 26<sup>th</sup> December 2023
- Monday 1<sup>st</sup> January 2024



Meals on Wheels will continue to be delivered

The Hythe Hub (Oaklands) Café will be closed **WEEKENDS ONLY** From 9th December 2023 – 13<sup>th</sup> January 2024

Shopping Services will cease on 22<sup>nd</sup> December 2023 and recommence on 3<sup>rd</sup> January 2024



### Laundry collections

Collection/Drop Off	Collection/Drop Off
Monday 18 <sup>th</sup> December	Friday 22 <sup>nd</sup> December
Wednesday 20 <sup>th</sup> December	Wednesday 27 <sup>th</sup> December
Friday 22 <sup>nd</sup> December	Friday 29 <sup>th</sup> December
<b>No collection or drop off on Monday 25<sup>th</sup> December</b>	
Wednesday 27 <sup>th</sup> December	Wednesday 3 <sup>rd</sup> January
Friday 29 <sup>th</sup> December	Friday 5 <sup>th</sup> December
<b>No Collections or drop off on Monday 1<sup>st</sup> January</b>	
The service returns to normal operating hours as of Monday 8 <sup>th</sup> January	

**We wish all our customers and supporters a Merry Christmas and a Happy New Year**



**FREE ENTRY**

# CHRISTMAS CAROL SERVICE

**Wednesday 6th December 4pm – 6pm**

AGE UK LYMINGE, EVERIST COURT, STATION ROAD, LYMINGE, KENT, CT18 8HQ.



Join us for an evening of Christmas Carols. Lots of Christmas treats will be available to buy, such as mince pies, mulled wine, and other Christmas treats.



For more information call: **01303 269602**

Registered charity number 1125274. Company number 6589817.



# LYMINGE AND ELHAM VALLEY STROKE SUPPORT

Have you or a family member been affected by a stroke? We are aware of how isolating this can be for the survivor and their carers.

**MONDAY  
4TH  
DECEMBER  
10-12PM**

Join your local support group for its twice monthly meeting at  
**The Coach & Horses pub,  
Lyminge**

Meetings: 4th, 18th December and 15th January (no meeting 1st January)

**Please let us know if you're interested or if you would like support even if unable to attend on the day**

Flyers kindly sponsored by Laing Bennett

Email: [Lymingestrokesocial@gmail.com](mailto:Lymingestrokesocial@gmail.com)  
Phone: 07903150099 or 07846177409

## Daniel Kirby Roofing & Building



Quality materials and reasonable rates  
Established 1996, based in Hawkinge, Near Folkestone, and covering Folkestone and Hythe areas

Embracing all roofing work from small roof repairs to complete re-roofs.

What we do:

- Fibreglass Reinforced Plastic flat roofs
- Felt flat roofs
- New pitched tile and slate roofs and repairs
- Small and large jobs
- Fascias soffits and gutters
- Chimney repairs, rebuilds and removal
- Conservatory conversions
- Advice and free quotes

**Visit full website below for more details**

[www.roofers-folkestone.co.uk](http://www.roofers-folkestone.co.uk)

**01303 892705 07916273886**

## Folkestone Safe Harbour Chair Position

We are looking for someone to fill our volunteer position as Chair at Folkestone Safe Harbour, our Community Sponsorship group.

This is an important role, as it is essential that our group has a leader to oversee the groups activities and ensure everyone's work is joined up.

Being Chair does not mean you do all the work. We are a well-established, hardworking group of volunteers who have been working together in our Community Sponsorship group for the last two years.

We each have Lead Roles in our areas of strength and would work with you throughout the entire project.

We are working towards bringing a refugee family to the UK, who are seeking long term resettlement.

We have spent the last year working incredibly hard to raise the money required by the Home Office to make our application.

-Your role -

- Two - Four hours per week.
- Work with Project Leads to complete the application to the Home Office.
- Liaise with the Home Office on application amendments and panel meeting.
- Attend appropriate online training.
- Oversee the group's activities, ensure that the family are receiving sufficient support.
- Convene regular meetings, troubleshoot problems.
- Be dedicated to the cause, be able to lead a group effectively, be organised and efficient.

If you are interested in the role, we would love to hear from you and send you more information.

Please email [folkestonesafeharbour@gmail.com](mailto:folkestonesafeharbour@gmail.com)

Visit [resetuk.org](http://resetuk.org) to learn more.

Please apply by January 1st 2024

Editor: [pbarnes20@icloud.com](mailto:pbarnes20@icloud.com)

## MINDCRAFT EDUCATION - MENTAL HEALTH COACHING FOR TEENAGERS



As an experienced special needs teacher with a qualification in counselling, I now offer single sessions and a number of courses directed at improving the mental health of teenagers. This can involve focusing on specific areas of concern or more general mental health issues, designed to create happier and more resilient young people.

For more information please contact me on 07458 949222

or go to

[www.mindcrafteeducation.co.uk](http://www.mindcrafteeducation.co.uk)



# LYMINGE PARISH COUNCIL

Etchinghill - Lyminge - Rhodes Minnis

[www.lymingeparishcouncil.org.uk](http://www.lymingeparishcouncil.org.uk)  
[clerk@lymingeparishcouncil.org.uk](mailto:clerk@lymingeparishcouncil.org.uk)



Agendas, minutes and relevant reports are published on the council website. If you would like a copy of council documents please contact the clerk.

## REMEMBRANCE DAY



For Remembrance Day this year we enlisted the help of the parish to knit poppies. The poppies formed our wreath which was laid on Remembrance Sunday.

LPC are aiming to be more environmentally conscious and this was an opportunity to remove the plastic aspect of the wreath and include the community.

The label read: "On behalf of Lyminge Parish Council and the parish of Lyminge, we will

remember them. May these poppies, knitted by residents of the parish, symbolise the eternal debt which we can never repay. Each day we wish for war to end and for those currently suffering to be at peace."

We hope that the community poppy endeavour can become an annual event and that each year more and more people from the parish get involved.

### **MEETINGS/SURGERIES:**

Every Monday\* 10:30am - Coach and Horses, Lyminge. General action meetings. (\*Not school holidays)  
Every 4th Sunday 11:00am - 12:00pm  
Lyminge Village Hall. Council surgery.

## NEW COUNCILLORS

By the time you read this, we hope to have co-opted more people on to Lyminge Parish Council. We have lots of work to get done and need as many hands on deck as possible!

Remember, you don't need to be a councillor to get involved with what we do in the parish.

## CONTACT INFORMATION

Neighbourhood Plan/Built Environment/Planning - roger.joyce@lymingeparishcouncil.org.uk  
Climate Action - claire.norman@lymingeparishcouncil.org.uk  
Community Engagement/Social Environment - emily.arnold@lymingeparishcouncil.org.uk  
Natural Environment - tony.king@lymingeparishcouncil.org.uk  
Handyman - fred@lymingeparishcouncil.org.uk  
General - clerk@lymingeparishcouncil.org.uk / 07999 403948

## CYCLE PARKING

The cycle parking rack has now been installed next to the Church Road entrance of the Tayne Field play park. This is a convenient place for you to disembark from your bicycle on the way to the park, the pub or any number of events that happen on Tayne Field. There is enough space for five bikes and will easily hold adult or child size bikes.

Please remember to securely lock your bike. Please disembark before you reach the parking so that you do not risk cycling into an unseen child.



## NEIGHBOURHOOD PLAN

Work on the Neighbourhood Plan is coming along and a lot of 'behind the scenes' work has been completed. We are now at the point where we need involvement from the parish. If you would like to be part of the steering group please contact the clerk who will also be contacting those who have already put their names forward, There will be a meeting in December to discuss the next steps, aims and general plan for the Neighbourhood Plan and to give you the opportunity to meet Alison Eardley and the councillors involved. You can learn more about the NHP on our website.



## DECEMBER MEETING DATES

Full Council - 11th December 19:30 - 21:30 - Rigden Room, Tayne Centre, Lyminge





## Thoughtful Food....

...is a group of local volunteers looking at our food, and how this impacts climate change. Our aims are to support people to produce more of their own food, and to shop locally, sourcing seasonal produce. We also run a community allotment in Lyminge and welcome new members.

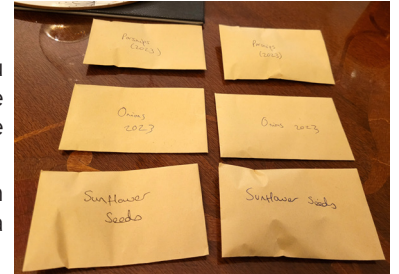
**Contact:** [thoughtfulfoodgroup@gmail.com](mailto:thoughtfulfoodgroup@gmail.com) or on Facebook and Instagram [@thoughtfulfoodgroup](https://www.instagram.com/thoughtfulfoodgroup)

Next **Thoughtful Food** meeting, **Tuesday 5th December, 7.15pm**, at the Coach and Horses Public House

## Sustainable Growing

One of the most sustainable ways of gardening is to harvest your own seeds. Once you know how this is relatively easy, you will have free plants. Thoughtful Food would be happy to advise on when to harvest, how to store, when to plant and where (maybe there is another series of workshops there!)

Thoughtful Food is looking for a home for a community seed box where anyone can drop seed packets in and help themselves to what they find. Does anyone know of a suitable place where a box could be stored?



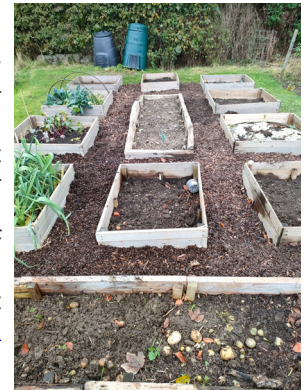
## Vegetable Growing Workshops

We kicked off the 2024 series of workshops a little early, with a great group of budding gardeners on 22nd October. We decided to hold this session in the autumn to give people time to use their new knowledge to prepare their gardens for the spring. We were very lucky with the weather and it stayed dry, even enabling us to enjoy a lunch together outside. We look forward to seeing you again in March for Part 2! If you would like to join the series next year, please drop us an email.



## Allotment Plots

We do have some availability for our mini-allotment plots, which are 'let' to individuals, couples, families or groups to 'grow their own'. It's ideal for anyone who wants to give it a go, but perhaps doesn't have a suitable garden or set up, and without taking on the commitment of a large allotment plot. Do drop us an email at [thoughtfulfoodgroup@gmail.com](mailto:thoughtfulfoodgroup@gmail.com) if you'd like to know more.



## Christmas Leftovers

This recipe centres around left over roast potatoes but I think it would accommodate any left overs - turkey, stuffing, Brussel sprouts, maybe not mince pies. Anyway, be bold and creative.

### Ingredients

- 500g left-over roast potatoes
- 2 tbsp vegetable oil
- 1 tbsp cumin seeds
- 2 tsp ground coriander, crushed
- 1 tsp ground turmeric
- 3 cloves garlic, bashed
- 1 green chilli, sliced
- 2 plum tomatoes, chopped
- 1 red onion, finely chopped
- 4 tbsp mango chutney
- a handful bombay mix

### Coriander Yogurt

- 6 tbsp natural yogurt
- a small bunch coriander, plus extra to serve
- 1 lime juiced

### Method

#### • STEP 1

Heat the oven to 200C/fan 180C/gas 6. Tip the potatoes into a bowl and add the oil, spices and garlic cloves. Season and toss well, then tip onto a large baking tray. Roast for 25-30 minutes or until crisp, tossing halfway through.

#### • STEP 2

To make the coriander yogurt, put all the ingredients in a high-powered blender with a little seasoning, and whizz until smooth.

#### • STEP 3

Tip the roasted potatoes and any spices onto a serving platter and top with the chilli, tomatoes and red onion. Drizzle with lots of the coriander yogurt and dollops of mango chutney. Sprinkle over the Bombay mix, along with a few coriander leaves.



**Very Best Seasonal Wishes from Thoughtful Food**



## Helping Wildlife This Winter

We can all struggle with the changing weather. Our wildlife friends are no different. Here's how you can lend a helping hand to wildlife this winter.

### Feeding birds in winter

Birds may find it harder to find their normal food in winter, but you can help them to stay strong by leaving out extra food for them.

Birds love to eat:

- Fruit: apples, pears and soft fruits.
- Suitable seeds and grains - like nyjer seed, millet, oats and sunflower seeds.
- Net-free fat or suet balls - these attract a wide range of species and provide a great boost of calories.
- Insects such as mealworms or waxworms.

Check out the RSPB website for further details [www.RSPB.org.uk](http://www.RSPB.org.uk)



### Hibernating wildlife

Before lighting bonfires, check wood or leaf piles carefully for wild animals such as hedgehogs, frogs and mice, who like to hibernate in these cosy spots. If you find wild animals in hibernation, be sure to leave them be.

This hedgehog was spotted in a resident's garden in the High Street, Lyminge.



### Don't forget fresh water

Fresh, clean water is essential for birds and other wildlife, so keep water bowls full of clean water and make sure you place bowls and feeders far away from bushes and other areas where predators might hide. Check your water bowls daily to make sure they have not frozen up.

## Have Your Say On The District's Carbon Reduction Plan

A call has gone out for residents and businesses to give views on a strategy to reduce carbon emissions across the Folkestone and Hythe district. The proposed District-Wide Carbon Plan has been published by Folkestone & Hythe District Council and sets out the suggested approach towards a net zero future

The plan recommends efforts should be concentrated on five priorities, known as the priority pillars of focus, – road transport, residential, commercial and industrial, waste and water and carbon absorption and biodiversity.

To have your say visit: <http://folkestone-hythe-consult.objective.co.uk/kse/>

## Bin Collections Over The Christmas Period

**Recycling (Purple Lid / Black Box and Food Waste) will be collected on the following dates:**

Wednesday 13th December 2023

Friday 29th December 2023 **(2 days later than your normal collection day)**

Wednesday 10th January 2024

**Non-Recyclables (Green Lid) and Food Waste will be collected on the following dates:**

Wednesday 6th December 2023

Wednesday 20th December 2023

Thursday 4th January 2024 **(1 day later than your normal collection day)**

**Garden Waste (Brown Lid) will be collected on the following dates :**

**There will be no collection on: Monday 25th December 2023**

Monday 8th January 2024



POP ME ON THE FRIDGE

**MOBILE  
FISH &  
CHIPS**



**EVERY  
THURSDAY**

*From*

**11.45am - 12.45pm**

**Age UK Car Park  
Eat In Cafe  
or Take Away**



**STREETZ 2 STREETZ**  
TELEPHONE:

**07955 926 835**

Major Cards Accepted

**Freshly Prepared  
Breakfasts & Light Lunches  
Home Baked Cakes  
Vintage Afternoon Teas  
Coffees  
Teas  
Takeaway Available  
Private Functions**

Open Tuesday to Saturday  
9am to 3pm  
Dog Friendly

THE COFFEE CABIN TEA ROOM LTD.  
CANTERBURY ROAD, LYMINGE, KENT.  
CT18 8HU. 01303 864222  
Instagram @thecoffeecabintearoomltd  
Find us on Google Maps

**Sarah  
Holbrook**  
PAINTER & DECORATOR

**Elevate Your Space with 20  
Years of Expertise**

**Services Tailored to your Specification**

Internal & External Work

Paper Hanging

Domestic & Commercial Undertaken

Peace of Mind - Fully Insured

Competitive Rates - Top-notch service at affordable prices

Free Quotations: Get a clear understanding of costs with  
no-obligation quotes.

07891743740 sholbrookdecorating@gmail.com

**Jazz** The George Inn  
Stone Street  
CT4 6DF

**Every Tuesday 8.30pm and  
Thursday 8.15pm**

Come early and enjoy home cooked  
English food, local ales and fine wines.

**Open for food from 12 noon and  
6pm, Tuesday to Saturday  
Sunday Roast from 12 noon**

Best to book to avoid disappointment

**Phone Michael: 01227 709170  
or E-mail:**

**landlord@thegeorgeononestreet.co.uk**

**www.thegeorgeononestreet.co.uk**

Find us on Facebook:  
The George Inn on Stone Street

*'Who's Rudolph's favourite pop star?'*

**Beyon-sleigh!**

# Kent's Leading Mobility Specialists

Over 200 new & used scooters available

**USED SCOOTERS FROM £395**

**BEDS FROM £1395**

**CHAIRS FROM £595**

Huge range of Shoes & slippers for problem feet

**HOME DEMONSTRATION LET US COME TO YOU**

**STAIRLIFTS**



**FOLKESTONE STORE**

**Tel: 01303 274574**

**[www.safehandsmobility.co.uk](http://www.safehandsmobility.co.uk)**

**[folkestone@shmobility.co.uk](mailto:folkestone@shmobility.co.uk)**

Compass House, 347-349

Cheriton Road, CT19 4BP

**ALSO AT BIRCHINGTON**



## HEAVER & LINCH

Bespoke Handmade Kitchens & Furniture

Bespoke Handmade Cabinet Makers based in Lyminge, covering Kent and the South East.

Over 30 years experience in creating stunning solid wood kitchens and furniture.

Get in touch for any advice, recommendations and a free quote.

**Tel: 07832 360 603 or 07832 363 963**

**Email: [heaverlinch@outlook.com](mailto:heaverlinch@outlook.com)**

**Website: [www.heaverandlinch.co.uk](http://www.heaverandlinch.co.uk)**



Don't be led up the garden path...

...choose an agent that gives straight forward, honest advice.



Call today for a free, no obligation valuation

Bridge Office - 01227 831999  
[bridge@colebrooksturrock.com](mailto:bridge@colebrooksturrock.com)  
 88 High Street, Bridge, CT4 5LB

Elham Office - 01303 840422  
[elham@colebrooksturrock.com](mailto:elham@colebrooksturrock.com)  
 Bank Buildings, Elham, CT4 6TD

[colebrooksturrock.com](http://colebrooksturrock.com)







## Lyminge Baby & Toddler Group

We are excited to welcome you to our local parent, baby and toddler group.

Please come along, meet new mums and dads for a chat and a play.

It costs £3.50 with tea and coffee provided along with snacks for your child.

Tuesdays, term times only. 10am to 12noon at the Tayne Centre.

First session is free.

Follow us on Facebook and Instagram.

Contact Ellen at 07870405567.

Early Years Education & Day  
Care for Children Aged 2-5



# LYMINGE Pre-school

Every Day Adventures  
at our **OUTSTANDING** pre-school

**COUNTRYSIDE SETTING**

**FANTASTIC FACILITIES & GARDENS**

**QUALIFIED & LONGSTANDING TEAM**

**WRAP AROUND CARE 8-5PM DAILY**

**HOLIDAY CLUB OUTSIDE OF TERM TIME**

**AFTER-SCHOOL CLUB**

**PARENT PORTAL**



Rated **OUTSTANDING**  
by OFSTED 2022

We'd love to hear from you:

☎ 01303 863149

✉ [LYMINGEPRESCHOOL@GMAIL.COM](mailto:LYMINGEPRESCHOOL@GMAIL.COM)

## Etchinghill Baby & Toddler GROUP

10.15-11.30am every Wednesday  
at Etchinghill Village Hall  
£2.50 per child

Come along to Etchinghill's Parent and Toddler group welcoming all pre-school children. We have plenty of toys and snacks for the little ones, and there is always tea, coffee and cakes for the adults. For further information call Ruth on 0781777975, look at Parent and Child Etchinghill Facebook page or email us as [parentandchildetchinghill@gmail.com](mailto:parentandchildetchinghill@gmail.com).



### My Clear Ears - Clinical Ear Care

Practitioner with CQC registration and fully insured  
**Appointments available for wax removal  
by microsuction**

Wax removal £60 ~ Otoscopy £20 (Ear health check)

In the comfort of your own home!

**Please call Collette on 07544586882**



## BADGERS BRIDGE NURSERY

*" Bridging the indoor and outdoor learning environment for  
children in their Early Years"*

Badgers Bridge is set in the idyllic countryside of Postling, just outside Lyminge. We are a small and friendly Preschool who blend the Montessori principles with the outdoor learning ethos.

We were awarded Outstanding by Ofsted in 2018 in every area. This is a real achievement and we are really proud of the staff who work tirelessly to provide a stimulating and caring environment for the children of Badgers Bridge. The inspector was particularly impressed with our Forest School. *"Children enjoy limitless opportunities to explore, investigate and work together in the natural woodland environment. Staff skilfully inspire children to develop a significant understanding of the world in which they live".*

*".....exemplary relationships between staff provide excellent role models for children and promote high standards of behaviour. Children make outstanding progress during their time at the nursery".*

**Exciting news! We have opened our new setting in Elham. We offer the same unique outdoor experiences for children from 20 months old. Come along and see us at The Gore!"** So please call or email us:

Email : [badgersbridge@gmail.com](mailto:badgersbridge@gmail.com)

Website : [www.badgersbridge.co.uk](http://www.badgersbridge.co.uk)

Tel : 01303 862951

**Postling Village Hall, The Street, Postling CT21 4EU**

Ofsted Registered : 395128

Companies House Reg : OC375571





**With our excellent local knowledge & experienced staff we will get you moving**

✓ **Free** professional photography, property floorplan, Rightmove premium listing & social media advertising

**01303 863393**

The Estate Office,  
8 Station Road,  
Lyminge,  
Kent CT18 8HP

Follow us on  
social media



[www.laingbennett.co.uk](http://www.laingbennett.co.uk)

## ETCHINGHILL VILLAGE HALL HIRE FEES

The next time you are thinking of holding a function why not try Etchinghill Village Hall, which holds the highest Hallmark accreditation level (Hallmark 3), with its excellent facilities, including ample parking space. The standard hire charge for the main hall and kitchen are:

ANY DAY OF THE WEEK ANY TIME £12 PER HOUR  
No winter supplements. No extra charges.  
Ideal for family parties and get togethers.

The use of a separate Committee Room is also available.  
For all bookings or enquiries please contact:  
**The Duty Manager on 07514 758936**

## The Lyminge Association

*We're here to support and develop our community!!*

### Contacts:

**Chair:** Peter Barnes 01303 863737 or 07808775302  
pbarnes20@icloud.com

**Treasurer:** Martin Fry 01303 863177  
martin@Rhodesminnis.org.uk

**Minute Sec:** Michelle Nolan

### Committee Members:

Marian Chubb, Richard Chubb, Dave Hunt-Cooke, Heather Dunford, Stephen Guyatt, Gillian Heywood, Robin Mackonochie, Derek Smith, Penny Stephens, Adrian Willcox, Bernie Wood

**Newsletter:** As for Peter Barnes above

**Editor:** pbarnes20@icloud.com

## Rhodes Minnis Village Hall

Charity No.800345

Rhodes Minnis Village Hall is located 2kms (1¼miles) from Lyminge and just off Longage Hill and Whitehorse Lane in Chapel Lane.

The hall, which holds Hallmark accreditation, is ideal for children's parties, band practice, quizzes, meetings, wedding receptions, fundraising events and much more. It has a fully equipped kitchen.

### Rates

Mon to Fri £18 per session £48 all day  
Sat & Sun £23 per session  
£33 for evening session and £69 all day

### Sessions

AM session 08.30 - 12.30

PM session 13.30 - 17.30

Evening session 18.00 - 23.45

Separate rates for Bank Holidays and New Year and special rates for regular users.

For all bookings and enquiries please contact:

**Mick & Dorothy Athow: 01303 862616**

**e-mail: booking-rmvh@outlook.com**



**Large hall with stage, new kitchen and flexible hire**

Excellent parking facilities, disabled access, proximity to playgrounds and playing fields. Beautiful countryside location.

### Capacity:

200 people dancing / audience seating, 100 with tables  
Small rooms available for up to 50 seated

Find out how we can help you with your next event:

**BOOK ONLINE: [lymingevillagehall.org.uk](http://lymingevillagehall.org.uk)**

**EMAIL: [admin@lymingevillagehall.org.uk](mailto:admin@lymingevillagehall.org.uk)**

**INFO: 07525 909185**

Full pricing can be found on our website.

### Guideline prices:

Main Hall hire: £88.40 (Fri / Sat evenings)

£47.60 (Sat / Sun morning or afternoon)

Find us on Facebook

Registered charity 28145

## LYMINGE METHODIST CHURCH AND TAYNE CENTRE HALL HIRE



Church Seating Max 150	£20 per hour
Clayson Hall (with Stage) Seating Max150	£15 per hour
Rigden Room Seating Max 35	£10 per hour
Wesley Room Seating Max 15	£10 per hour

All rooms have use of kitchen, toilets and disabled toilet. With the exception of Wesley room, all rooms are disabled-friendly and accessible.

Contact Tel: 07716521405 Email: maryeblanch@outlook.com

### Who hides in the bakery at Christmas?

**A mince sp.**

### Who delivers presents to pets?

**Santa Paws!**



## Bus times

To Folkestone town centre via Etchinghill & Cheriton High Street  
From Lyminge, The Sidings

**MONDAYS TO FRIDAYS except Bank Holidays**

There are route 17 buses at 0642, 0748, 0909, 0944, 1044, 1144, 1244, 1344, 1444, 1614 (schooldays only), 1619, 1704, 1804, and 1904.

**SATURDAYS**

There are route 17 buses at 0749, 0844, 0944, 1044, 1144, 1244, 1344, 1444, 1544, 1644, 1744, 1844, and 1929.

On Mondays to Saturdays there are also route 18 buses to Sandling Station & Hythe - for times see our website or call the number below.

**SUNDAYS & BANK HOLIDAYS**

There are route 17 buses at 1032, 1302, 1532 and 1802.

To Canterbury city centre via Elham, Barham & Bridge  
From Lyminge, Wesley Terrace

**MONDAYS TO FRIDAYS except Bank Holidays**

There are route 17 buses at 0727, 0752 (school holidays only), 0903, 1003, 1043, 1143, 1243, 1343, 1443, 1613, 1733, and 1858.

**SATURDAYS**

There are route 17 buses at 0742, 0842, 0943, 1043, 1143, 1243, 1343, 1443, 1543, 1643, 1743, and 1843.

On Mondays to Saturdays there are also route 18 buses to Canterbury via Stelling Minnis and Bossingham - for times see our website or call the number below.

**SUNDAYS & BANK HOLIDAYS**

There are route 17 buses at 0903, 1133, 1403, and 1633.

These bus times apply from 25 September 2023.



0345 241 8000 @StagecoachSE  
customerhelpSE@stagecoachbus.com  
stagecoachbus.com



**Anna's Animal Physiotherapy**

For dogs, cats & small pets

**Anna Lindley**  
(RVN, Dip.A.Physio)

- Offering physiotherapy assessment and treatment of dogs, cats and small animals.
- I use a combination of manual therapy, laser, ultrasound therapy, TENS, kinesiology tape and exercises to rehabilitate your/their pet depending on the needs. I also address environmental and exercise factors that can help your pet with their condition.
- I now have a **NEW** treatment room where I can offer further assessment of your pet using a stance analyser. This identifies the mildest of lameness and addresses areas of compensation. I also offer home visits. Physiotherapy can help with arthritis and the ageing pet, post operative orthopaedic surgery, neurological, spinal conditions and many more conditions.
- I am fully insured with over 15 yrs experience working with animals. I am a member of the International Association of Animal Therapists (IAAT).
- For more information please visit my website: [annasanimalphysio.co.uk](http://annasanimalphysio.co.uk) or feel free to contact me on 07944 606453 or [anna@annasanimalphysio.co.uk](mailto:anna@annasanimalphysio.co.uk)



Based in Etchinghill, I provide a personalised service with a one-off, flat fee of £180 to prepare & submit your Tax Return. No hidden costs.

FMAAT Licensed Accountant, fully insured and HMRC-authorised.

Contact Anita: 07361 238744 or  
[aabookkeepingservicesaadams@gmail.com](mailto:aabookkeepingservicesaadams@gmail.com)

## Lyminge Library Opening Times

Monday 10am - 2pm  
Tuesday 12noon - 5pm  
Wednesday 10am - 2pm  
Thursday 10am - 5pm  
Friday 10am - 2pm  
Saturday 9am - 1pm

Tel: 03000413131 [lymingelibrary@kent.gov.uk](mailto:lymingelibrary@kent.gov.uk)

**CIAT**  
Chartered Institute of Architectural Technologists

**DAVID HAIME**  
ARCHITECTURAL TECHNOLOGIST  
BUILDING TECHNICAL DESIGN  
AND CONSTRUCTION DRAWING  
SERVICES.  
PROJECT MANAGEMENT

BUILDING PLANS FROM PORCH TO NEW BUILD.  
PLANNING/BUILDING CONTROL/STRUCTURAL CALCS.  
COVERING KENT/SUSSEX/SURREY.

LYMINGE, KENT CT18 8HA  
TEL: +44 7974 156510  
EMAIL: [D.HAIME@BTINTERNET.COM](mailto:D.HAIME@BTINTERNET.COM)

*Kingdom*  
CARPET CO.

- Carpets Supplied & Fitted
- Carpets Professionally Cleaned
- Carpets Whip Edged & Cotton Bound

Whatever your carpet need, give us a call for a **FREE** estimate / assessment.

Over 50 years combined experience.

07943 764 442

Email: [kingdom.carpet.co@gmail.com](mailto:kingdom.carpet.co@gmail.com)

**GEORGE MILLER**  
BOILER & HEATING ENGINEERS

- Gas & Oil Boilers
- Central Heating
- Hot Water Systems

01303 901070

[service@georgemiller.co.uk](mailto:service@georgemiller.co.uk)

248 Cheriton Road,  
Folkestone, CT19 4DN



## Financial Planning

**David Gridley - Chartered Financial Planner**

Range of quality advice from a fully qualified adviser:

- Pre- and Post-Retirement Planning
- Investment Planning
- Inheritance Tax Planning

For further information, please contact our Lyminge office

David Gridley FPFS

Tel: 01303 863959 Email: davidgridley@sjpp.co.uk

**MWH**

Window and gutter cleaning service

**Mark Haley**



Lyminge and surrounding areas

For a free no obligation quote, please contact me

Mobile: 07738 479202

Home: 01303 863 702 Email: haleymark161@gmail.com

Find us also on Facebook

**Ashman Consulting Ltd**



**Straightforward I.T.**

**Advice  
Training  
Solutions  
Support**

**Steve Ashman**

**07702641981**

**info@ashman-consulting.co.uk**

**T. Metcalfe Fencing Contractors**

Approved Expert Installer for Jacksons Fencing

Established over 30 years

Fully insured - Highly experienced teams



Panel fencing, gates, decking, pergolas, post & rail, stock fencing, security, landscaping & tree surgery.

**01303 840201 07790 290 155**

metcalfefencing@btinternet.com

Proprietor - Derek Burr,  
Ash Ridge House, Elham



## Fincham Plumbing & Heating

We specialise in bathroom remodelling, including all tiling & pipework

Natural gas boiler servicing, Installation, Maintenance, Repairs, Replacement

All your plumbing requirements

Martin is a Qualified Plumber & Gas Engineer with over 30 years experience

Gas Safe, CIPHE, WIAPS registered

**Rosemary & Martin Fincham**

**07835 851 706 martinfincham@sky.com**

**HAND MADE CURTAINS,  
ROMAN BLINDS & SOFT  
FURNISHING**

**CURTAIN ALTERATIONS**

**TEL: VALERY WREN 01303 237755**



**Lou Lloyd**

**Carpenter**

**loulloyd@rocketmail.com**

**07984 426214**

**Kitchens, Flooring, Wardrobes,  
Doors, Decking and more!**



**D & S DOUBLE GLAZING SERVICES**

01303 863689 - 07912317915

We are a local company that specialise in double glazing repairs offering a wide range of service's that include: Replacement double glazed units - Locks - Hinges - Handles - Rubber Seals - Gaskets.

For a free estimate please call: 07912317915 or 01303 863689

or email: dsdoubleglazingservices@gmail.com



**CEDAR TREE CARE** City & Guilds

All types of tree work undertaken NPTC

Crown lifting, crown reductions,

dismantling and removals, hedge maintenance,

pollarding, stump grinding and removal, mobile saw milling,

wood land maintenance, all year round seasoned logs available

Fully insured and NPTC qualified with over 15 years experience

Call Tom: 07769 908027 email: linchlogs@gmail.com

**SPEARPOINT**  
TREE SERVICES

All Aspects of Tree Work Undertaken  
NPTC Qualified  
Fully Insured  
Please call **Shane** for a Free Quote  
**07963 203564** or  
**01303 621992**

**B.M. Plumbing & Maintenance Services**

Local Lyminge Tradesman

Plumbing and heating works. Complete bathroom install including tiling. General building maintenance undertaken. No job too big. No job too small.

Cheaper rates for senior citizens

**07890854128 Benmillsplumbing@hotmail.co.uk**



FULLY INSURED

Dog training and Pet care services

- Puppies from 12 weeks old
- Kennel Club Good Citizen Dog Scheme Puppy through to Gold
- 1-2-1 home-based puppy training also available
- Other pet care, dog walking and day cover available
- Other fun classes available - ask for details

Lyn Fagg 07866 234820

Email: Elhamdtc@gmail.com



FULLY INSURED





## Snippers and Clippers Barbers - Lyminge

Please call Richard for availability on  
**07522 494969**

*Appointments not always necessary*

4 Station Road, Lyminge CT18 8HP

## Andy Mannering Flooring

SPECIALISING IN AMTICO AND KARNDEAN LUXURY VINYL TILES

- Also safety flooring, rubber flooring, etc.
- Commercial and domestic work undertaken
- No job too small
- Free estimates and advice given
- Over 35 years experience
- Fully insured



**Telephone:** 0797 434 7248 or 01303 863095

**Email:** info@andymanneringflooring.com

Please visit my website for further information and feedback

**www.andymanneringflooring.com**



## DILTON MINI SKIP HIRE

Ballast, Hardcore, Sand and Topsoil Supplied

REGISTERED WASTE CARRIER

**01303 812448 or 07799 433754**

## Red Dragon I.T. Ltd.



- Windows, Mac & Linux Systems
- PC Health Checks
- Wired & Wireless Networks
- Website Design
- Graphic Design

T: 01303 723456 | E: info@rdit.co.uk | www.rdit.co.uk  
The Old Granary, Hanover Mill, Church Rd, Mersham, TN25 6NU

## Rhodes Minnis Cat Sanctuary



REHOMING & BOARDING CATTERY

- Our Sanctuary takes in and rehomes 250 unwanted cats and kittens each year. A variety of cats are always available to suitable homes.
- 5\* Boarding Cattery under 2018 regulations
- We are open to visitors every day from 10am-1pm & 2-4pm. No appointment needed.

T: 01303 862 243

E: rhodmminiscats@gmail.com

Facebook: @rhodmminiscats

www.rhodmminiscatsanctuary.com

Seathwaite, Green Lane, Rhodes Minnis, Kent. CT4 6XU  
Reg. Charity No. 262245



*'Helping you enjoy your garden'*

## CRT Gardening

All general garden and major landscaping redesign work will be undertaken including: full or minor garden design, hard and soft landscaping, new fencing and decking installation and repairs as we are Jacksons Fencing approved installers, hedge trimming and cutting, small to medium tree work.

For a free quotation call or text Karl Dodd on 07967 442518 or email karl.dodd@live.co.uk

Fully Insured



Hawkinge

## Veterinary Surgery

Independently owned veterinary surgery for all types of small animals.

Opening hours: Monday to Friday 08:00-19:00 Saturday 08:30-13:00

24hour emergency service

TEL: 01303 764190

Hawkinge Veterinary Surgery, 9b Defiant Close, Hawkinge CT18 7SU  
www.hawkingevetsurgery.co.uk



**ROBERT KENT** Cert. fp  
FUNERAL DIRECTOR

**Direct Cremation**

**£999**

**Fair Priced Cremation**

**£1950**

**ONE FIXED PRICE INCLUDING ALL CREMATION FEES**

**01303 684062**

**RKFUNERALS.COM**

## SCRUBBERS - Est. 1988

THE HOME AND COMMERCIAL CLEANERS

One off, regular or moving day 'Blitz'

Oven cleaning - Ironing

Carpet cleaning and more...

For a friendly and reliable service

Free Estimates

**Tel: 01303 249288 or 07834 128671**

## Computer support & repairs by local people

*Customer service is our priority*

- \*Remote IT support for business or home
- \*New & refurbished sales
- \*Call-outs for business or domestic users
- \*Preventative maintenance & upgrades
- \*Repairs to most phones, tablets & devices

enquiries@thecomputerpeopleltd.co.uk



Church Approach,  
New Romney,  
TN28 8AS  
01797 363385



**Acrise Electrical Services Limited**

**Design - Install - Maintain**

Tel: 01303 656007 Mob: 07803 421240

Email: info@acrise-electrical.co.uk

Website: acrise-electrical.co.uk

*Domestic, commercial, industrial & agricultural electricians serving the Elham Valley and surroundings.*

## Tressenden Designs

A seamstress and costume maker with 8 years of experience.

- ♦ Clothing alterations ♦ Repair work undertaken ♦ Made-to-measure; create a bespoke piece for those special occasions
- ♦ Modern and vintage designs ♦ Costumes, ball gowns and wedding dresses

For more information or a quote please contact Amy on: **Mobile: 07853 202304 Email: amy.louise.ford@hotmail.co.uk**





**APX PROJECT  
MANAGEMENT**

From design to build, we use trusted quality trade professionals along with reliable suppliers to ensure budgets are met, with high standards maintained. If you're looking to -

- Extend your property
- Carry out an external or internal refurbishment
- Convert an existing building into a new dwelling

Please contact: paul@apxprojectmanagement.co.uk 07487 364155



**Dennis Huntley  
Chimney Sweep**



Wood burners and multifuel stoves installed  
Hearths and fireplaces built & installed  
Over 40 years' experience

**01303 862 343 • 07850 784 365**

dennis.huntley@talktalk.net www.dennishuntley.co.uk



**Auto Economy Centre**  
Fully equipped Mechanical Repair & Service Centre  
With the latest diagnostic equipment  
Half price MOTs when booked with any service  
**01303 863656**  
Orchard Garage, Canterbury Rd, Etchinghill  
www.autoeconomycentre.com

**AIR LINK CARS**

(You pack up, we pick up)  
Airport, Seaport & Long Distance Travel Specialists.  
The Family Run Business where service really counts  
Estate cars and People Carriers



Fixed price 24hrs a day. No extras.  
Written Confirmation of booking.  
For the Easy Airport Link, Think AIR LINK!  
**01303 670370 - 07766 824 474**  
airlinkcars@yahoo.com

**Gosbee  
LANDSCAPES**

FENCING | GATES | PAVING | RESIN BONDING  
• Over 35 years experience • Jacksons Approved Installer  
• Marshalls approved • Check-a-trade registered

Call Martin Gosbee: 07974 835 511 | 01303 863 337

GOSBEECONSTRUCTION@GMAIL.COM  
GOSBEE.CO.UK



**Sunhouse Electrical**

Your local reliable Electrician  
Part P Registered & Elecsa Approved  
On Electrical Safety Register & Fully Insured  
For a free quotation call James on

**01303 766333**

www.sunhouse-electrical.com

**KW CONSTRUCTION**  
PLASTERING & RENDERING SPECIALIST

ALL GENERAL BUILDING INCLUDING:  
ROOFING, BRICKWORK, TILING, PATIOS,  
LANDSCAPING, SCREEDING, GROUNDWORK,  
DRAINAGE, EXTENSIONS, RENOVATIONS,  
REPAIRS & MAINTENANCE.

30 YEARS EXPERIENCE, COMPETITIVE RATES,  
A FULLY INSURED, PROMPT & RELIABLE  
HIGH QUALITY LOCAL BUILDER

KENNY 07743488361

**HANDYMAN  
SERVICES**  
SJW

www.Facebook.com/sjwoodhandyman  
www.Instagram.com/sjw.handymanservices  
07796 384857

**LYMINGE FOOD & WINE**  
01303 862225



Our new opening times are:  
Mon – Sat 7:00-20:00  
Sunday & Bank Holidays  
8:00 - 19:00



We offer National Lottery, ATM terminal,  
Post Office & PayPoint services.



**AK Healthcare**  
Registered Osteopaths

Tel: 07904311554 /  
07980897382  
www.akhealthcare.org.uk

As osteopaths, Adam and Katie can help patients suffering from a wide variety of conditions including arthritic pain, circulatory problems, frozen shoulder, back pain, sciatica and much more. Please visit our website or give us a call for more information.

**AK Healthcare,  
Garden Suite,  
4 Station Road, Lyminge**

**Park House Sanctuary Boarding Kennels & Cattery**  
Park House, Stelling Minnis CT4 6AN

Brick-Built Heated Kennels. Daily Walks ~ Reasonable Rates  
Dogs must be fully inoculated. Heated Cat Chalets  
Quiet Area Inspection Invited.

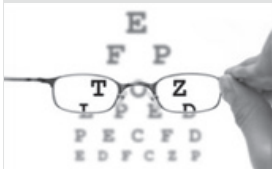
To book or for further information, call 01303 862622  
or email lord.whisky@btinternet.com  
www.lordwhisky.co.uk

**South East Aerial & Satellite Solutions**

Digital – Freeview – Satellite – Aerials  
Supply and fit of quality digital installations, FREEVIEW, SKY,  
aerials, poor reception and problem solving, upgrades and  
repairs by fully accredited engineers  
Free quotations and advice, fixed prices, fully insured



**NO CALL-OUT CHARGE**  
07825 168010 - 01303 862361



**HOME VISITING OPTOMETRIST - providing professional eye care in your home**

If you are over 60 years of age and no longer able to get out on your own, then you are eligible for a NHS sight test in your own home. Please call to arrange an appointment:

**Elaine Edwards BSc(Hons)MCOptom 01303 840541**

Registered with the General Optical Council (01-15421) Member of the College of Optometrists Member of the Association of Optometrists





**T.M. GRIGGS**

01303 489795 07854 098395  
tobystreesurgery@gmail.com



**Garden Clearance - Turfing - Hedge Cutting  
Tree Work - Stump Grinding - Fence Repair**

**DYNO-ROD**



We've been  
unblocking  
sinks, drains  
& toilets  
in Kent  
since 1965

- Quick Response
- CCTV Drain Inspections
- Drainage Repairs
- Pre-purchase Surveys

For a FREE no obligation quote  
contact Mark or Peter on:

**01233 621108  
07557 616630**

## FRESHLOOK GARDENS

Regular lawn mowing service. Garden design. Hard and soft landscaping. General garden work, fencing and decking. Turfing hedge cutting, small and medium tree work. Water features, ponds and patios.

For free quotation ring **Danny Scott**  
**01303 242140** or **07795510093**  
**mrdanscott89@gmail.com**

Established since 1990. Fully insured.

## THE HANDY FELLOW



**A TRUSTED LOCAL SERVICE  
CALL 07534485049  
ONE.HANDY.FELLOW@GMAIL.COM**

## Computer Repairs

01303 241325  
07968 129902

PCs, MACs, Laptops, Tablets & printers,  
Upgrades & Repairs, Internet & Email, virus removal,  
Office Setup, Backup & Recovery & much more ...  
Tuition available by a qualified tutor.

Usual Fee **£55**

Web sites built & hosted from £10 per month

See [www.computers-in-lyminge.co.uk](http://www.computers-in-lyminge.co.uk) for details



General Landscaping Including  
Fencing • Turfing • Paving

**Gavin Allfree**

T 07495 299711 E [gavinallfree@gmail.com](mailto:gavinallfree@gmail.com)



**Alan Croucher  
Caravan Engineer**

**07921 480919 - 01303 863194**  
Caravans & Motorhomes "WE COME TO YOU"  
[www.arcmobilecaravanservices.com](http://www.arcmobilecaravanservices.com)

"Your manufacturer's warranty is safe in our hands"



Local Tradesman

## J Tappenden

Established over 40 years ago

Painter/Decorator

**01303 862467  
077755 78008**



## A. J. Athow

**BUILDER & DECORATOR  
GENERAL MAINTENANCE**

Telephone: 01303 862616

Mobile: 07541 792238

Email: [tony@athow.co.uk](mailto:tony@athow.co.uk)

## Jackson Plumbing Property Maintenance

Complete bathrooms and tiling  
No job too small. Special rates for OAP's.

**Telephone: home/evening 01303 270691  
or daytime 07773 089398 or 07864 929826**

## Trevor Law Electrical Installations

Serving Elham Valley for 30 years  
Part P Registered

**07850 970087**



## Ralph Allard Chimney Sweep

All chimneys, boilers and stoves swept.  
Brush and Vacuum. Certificates issued.  
HETAS and NACS registered, fully insured.

Member of National Association of Chimney Sweeps

**01303 844465 or 07813716654**



**JBS  
BUILDERS**

Specialising in Brickwork, Fencing, Landscape Gardening. Tree work undertaken (lopping, felling and clearing).

General household repairs, painting, plastering, power jetting & cleaning.

No job too small!!! All work guaranteed and insured.

**For free advice and quotations please call: 07825 168010/ 01303862361 (anytime)**



## D.M.B. Plastering

All aspects undertaken  
*Interior. Exterior. Plastering. Rendering.  
Coving. Ceilings. Wall. Floors  
Finest quality assured. CSCS Certified.*  
30 years experience.  
Free estimates. Reliable service. Fully insured.  
Call **David** on **07818 607209**

# Ewin Electrical

Contact Simon for any electrical maintenance, refurbishments or upgrades with a friendly, clean and professional approach to work  
07891103065

info@ewinselectrical.co.uk www.ewinselectrical.co.uk



To advertise in this space for **£9.50 per month**  
(or **£95 per annum, 2 months free**)

please contact

Peter Barnes

pbarnes20@icloud.com 01303863737  
/ 07808775302

## SNIPPERS & CLIPPERS UNISEX HAIR SALON

APPOINTMENT NOT ALWAYS NEEDED

WEDDINGS & SPECIAL OCCASIONS

SHELLAC NAILS

FREE WIFI

GENTS WELCOME

4 Station Road, Lyminge  
Folkestone  
Kent, CT18 8HP

01303 647 222

info@snippersandclippers.co.uk

Find us on  
Google+

Find us on:  
facebook®



## KJB GARDEN SERVICES

Weeding, Pruning, Mowing, Hedge  
Cutting & General Maintenance  
**01303 862181** or **07704 989 402**  
Over 35 years experience

House Clearance covering South East Kent.....and beyond!  
**CAROL CREES CLEARANCES**



- Est. over 30 years  
Full/part house clearance  
Fair prices paid  
Antique/Vintage/Retro/Modern  
Registered rubbish carrier

Contact **Simon Cullen** on **07745 421680** or **sijnzo@aol.com**

## East Kent Foot Care

www.eastkentfootcare.co.uk

**07745 532075**

**Podiatry, Chiropody,  
Foot Health**

Treating and managing foot  
and nail conditions, corns,  
callus, insoles, ingrown nails,  
diabetic foot care



Total garden care for all your needs

## TIM MILLETT

Grass Maintenance, General Gardening, Small & Medium  
Size Tree Work, Stump Grinding and Wood chipping  
Fencing Repairs & New Installations  
Turfing, Hard & Soft Landscaping

Free Estimates - Fully Insured

**01303 863676**      **07752 880583**

Email: **info@tmhorticulture.co.uk**

## N.P.C.

**Domestic Appliance Services**

*Service and repair of washing machines, tumble driers,  
dishwashers, cleaners and small electrical work.  
For a prompt and friendly service*

Call Neil Collard 01303 892234 or 07798716044  
or Google me on Yell.com



## Your Local Electrician For all your electrical needs

- 18th Edition/Part P Registered
  - Insured & all work guaranteed
  - All electrical work carried out including EV charging points
  - Covering Lyminge, Etchingill & surrounding villages
- Call for a free, no obligation quote and to discuss your electrical requirements.

Proud members of  
**Checkatrade.com**  
Where reputation matters



**07878 457018**

**01303 814372**

info@hughes-electrical.co.uk www.hughes-electrical.co.uk

## JON DAUGHTERS - Local Builder

All aspects of general building works undertaken including: roofing, kitchens, bathrooms and small extensions  
**Trading for over 30 years Free quotes, no obligations, fully insured**  
**Telephone: 01303 863371 Email: daughters777@hotmail.co.uk**





## LYMINGE THEN AND NOW

Our monthly look at how Lyminge has changed over the years, with thanks to Lyminge Historical Society.



The Gate pub, which still stands on Gate Lane by Mockbeggar in Rhodes Minnis may take its name from one of the gates that once gave access to the nearby common land. The pub was listed in Bagshaw's local directory of 1847, while the common at Rhodes Minnis was not fully enclosed until after 1855, so the origin of the name is plausible. The pub was operated by Alfred Beer & Co of Canterbury from 1884 and passed through a number of hands until it was acquired in 1907 by Mackesons of Hythe, whose signage is visible in the photo on the left. The Gate was notorious for after-hours drinking, and was eventually closed in the 1990s after its licence was taken away. It is now a popular tearoom, operated by the Lord Whisky animal sanctuary nearby.



The Ukrainian Choir, Spivochy, performed along with the Cantores Choir in Lyminge Methodist Church on 4th November



Postling Ladies presenting a cheque to Pilgrims Hospice following their 'Coffee and Cake Mornings' at Postling Church.



**Etchinghill Residents Association**  
Autumn Quiz Night is well underway and raised a very worthwhile net total of £300.







# Remembrance Sunday

A wonderful event shared with Lyminge Parish Church at the War Memorial followed by a joint service in Lyminge Methodist Church, all led by Rev Gill Songer.



## Lyminge Businesses' Christmas and New Year 2023/24 Opening Hours



	Fri 22-Dec	Sat 23-Dec	Sun 24-Dec	Mon 25-Dec Christmas Day	Tues 26-Dec Boxing Day	Wed 27-Dec	Thurs 28-Dec	Fri 29-Dec	Sat 30-Dec	Sun 31-Dec New Year's Eve	Mon 01-Jan New Year's Day
Age UK, Lyminge (see P13)	Normal	Closed	Closed	Closed	Closed	Normal	Normal	Normal	Closed	Closed	Closed
Auto-Economy Garage	Normal	Closed	Closed	Closed	Closed	Normal	Normal	Normal	Closed	Closed	Closed
Chemist	Normal	Normal	Closed	Closed	Closed	Open	Normal	Normal	9am-1pm	Closed	Closed
China China	Normal	Normal	Normal	Open (booking necessary)	Closed	Closed	Closed	Normal	Normal	Normal	Normal
Coffee Cabin	9am-12noon	Closed	Closed	Closed	Closed	Closed	Closed	Closed	Closed	Closed	Closed
Coach and Horses	12noon-1am	12noon-12 midnight	12noon-10.30pm	12noon-3pm	12noon-7pm	12noon-11pm	12noon-11pm	12noon-11pm	12noon-11pm	12noon-9.30pm	12noon-7pm
Farm Shop, Lyminge	Open	Open	Open	Open	Open	Open	Open	Open	Open	Open	Open
Farm Shop, Ottinge	9am-2pm	Closed	Closed	Closed	Closed	Open	Open	Closed	Closed	Closed	Closed
Laing Bennett	9am-1pm	Closed	Closed	Closed	Closed	Closed	10am-2pm	10am-2pm	10am-2pm	Closed	Closed
Library	Open	Open	Closed	Closed	Closed	Closed	10am-5pm	10am-2pm	9am-1pm	Closed	Closed
New Lyminge Surgery	8am-6.30pm	Closed	Closed	Closed	Closed	8am-6.30pm	8am-6.30pm	8am-6.30pm	Closed	Closed	Closed
Premier Food Store	7am-8pm	7am-8pm	7am-7pm	12noon-2pm	8am-4pm	7am-7pm	7am-7pm	7am-7pm	7am-7pm	7am-7pm	8am-2pm
Snippers and Clippers (Ladies)	9am-5pm	9am-4pm	Closed	Closed	Closed	Closed	9am-5pm	9am-5pm	9am-2pm	Closed	Closed
Snippers and Clippers (Men)	8.30am-6pm	Appointments on 07522494969	Closed	Closed	Closed	Appointments on 07522494969	Appointments on 07522494969	Appointments on 07522494969	Appointments on 07522494969	Closed	Closed
The Gatekeeper	Open all day	Open all day	Open all day	Open (drinks only) 12-2pm	Open until 4pm	Open all day	Open all day	Open all day	Open all day	Open all day	Open until 4pm
The Surgery, Church Road	Normal	Closed	Closed	Closed	Closed	8am-6.30pm	8am-6.30pm	8am-6.30pm	Closed	Closed	Closed

**Just when you thought you knew all the Christmas cracker jokes...**

*What do you call a boomerang that does not come back? A stick.*  
*Why was the turkey in the pop group? Because he was the only one with drumsticks!*  
*What do you get if you eat Christmas decorations? Tinselitis!*  
*What do they sing at a snowman's birthday? "Freeze a jolly good fellow..."*  
*What did Santa do when he went speed dating? He pulled a cracker.*  
*What happens to elves when they are naughty? Santa gives them the sack!*  
*Why couldn't the skeleton go to the Christmas party? He had nobody to go with.*  
*What do frogs wear on their feet? Open toad sandals.*  
*Which athlete is warmest during winter? A long jumper.*  
*What happened to the man that stole an advent calendar? He got 25 days.*  
*What do Santa's little helpers learn at school? The elf-abet.*