

# THE LYMINGE NEWSLETTER

For the communities of LYMINGE, ETCHINGHILL, RHODES MINNIS and POSTLING

August 2023  
From The Lyminge Association

Produced by  
THE LYMINGE ASSOCIATION  
[www.lyminge.org.uk](http://www.lyminge.org.uk)



## **GARAGE SALE**

**with TABLE SALE**

at Lyminge Village Hall

### **Sunday 17th September**

starting at 9.00am

## **COMING SOON!**

For garages in Lyminge and surrounding villages

Registration Forms will be available  
at the beginning of September

For further information  
call Ray on 01303 863856

Organised by  
The Lyminge Association

My apologies for the late arrival of the July newsletter, especially to those who set aside time each month for their delivery. Unfortunately, holidays got in the way and so the drafting of the copy was late and wholly my responsibility. **Peter Barnes, Editor**

# Margaret Saunders' Meanderings

Two things draw me to the White Cliffs at Dover. One is that it is a beautiful place with much to observe and enjoy and another, more personal reason, is that my grandfather was lost at sea just off the coast here in 1917, when the Dover Patrol destroyer on which he was serving was hit by a German torpedo and sank within eight minutes with the loss of all on board. Today I count twenty-eight ships between Dungeness, whose power station I can see in the far distance, and St Margaret's Bay to the east. This is one of the busiest shipping lanes in the world.



Pre-Covid, the numerous paths that make their way along the cliffs towards the South Foreland Lighthouse, were rough and chalky, steep in places and becoming very slippery in wet weather. Now there is a surfaced path all the way, making for an easier walk. However, it is still possible to take divergent grassy paths beside which are notices encouraging walkers to keep to the tracks to preserve the precious wildlife, of which there is an abundance. Throughout the whole of my walk, I can hear skylarks singing on the landward side, above fields of swaying wheat, whose movement seems to mimic that of the neighbouring sea, rippling in waves.

I count thirty-five different wild flowers and there are more I cannot identify. Amongst them are slender thistle, agrimony, vervain, upright chickweed and both wild thyme and marjoram. Their colours are predominantly white, yellow and purple/pink, with the exception of a small patch of scarlet pimpernel and one red poppy. Bees brave the winds clinging on to their chosen flowers and amongst the fast moving butterflies I manage to identify marbled whites, large whites, red admirals and red coppers. Bushes are cropped and stunted or bent almost horizontal in response to the continuous prevailing westerly winds. Looking down over the cliff edge, the foamy waves fan in over a shingle beach, pushing around and over black rocks and white fallen chalk. Near to me the sheer cliffs are dazzling in their whiteness, flecked with layers of grey flints and topped with a thin layer of soil, providing sufficient succour for the flora. Perched on the precipitous edge of the cliff is part of a brick building with a concrete base,



already mostly fallen as gradually the cliffs crumble and tumble into the sea. I sit safely a little way from the edge and watch the fast moving cloud shadows shift across the blue-green sea, the surface of which ripples – no white tops today. Two yachts, their sails tightly furled, are making their way to the harbour entrance, sailing close to the coast. They are dwarfed by the large passenger ferries that are constantly arriving and leaving the harbour. The sky is a mixture of clouds with cumulus far out to sea and small wide shallow clouds to the east. France is clearly visible, the twenty miles from South Foreland to Cap Griz Nez being the shortest distance between the two countries.



Small white snails with brown whorls are scattered amongst the short grass next to a footpath and to one side, a young rabbit sits frozen, until my slight movement sends it scurrying into the scrub. Exmoor ponies and cattle roam these areas, which are Sites of Special Scientific Interest, but today I seen none, only evidence of their past presence.

Ahead lies the Victorian lighthouse, built to warn mariners of the danger of the shifting Goodwin Sands. Beautiful though the sea is, it can be treacherous. It is low tide and I look over some railings at the skeletal wreck of the SS Falcon at the bottom of Langdon Cliffs. In 1926 it was carrying a cargo of hemp and matches, which caught fire and the ship grounded whilst still alight. After almost one hundred years, the thick steel of the hull is clearly visible close to the bottom of the cliff, which is remarkable considering the corrosive effect of sea water and the constant ebb and flow of the pebble laden tide. People born in Dover are referred to as 'Dover Sharks' allegedly because the townspeople would collect goods washed ashore by the not infrequent shipwrecks.



On the return walk I pass under the Coastguard station, its radar emitting a faint whirring sound as it endlessly turns, scanning the sea for information. In the distance, and of a different age, Dover Castle sits on the hill, its outline bold against the sky. Evidence of an iron age fort lies under the present buildings and who knows who was there before that, in such a commanding position looking southwards in the direction from whence enemies would come, eager to invade our island. And as if on cue, a Spitfire flies parallel to the coast out to sea, the roar of its throaty Merlin engine familiar to those who live locally, reinforcing the importance of this area over the centuries, in the defence of our country.

# Diary of Forthcoming Events

This page is printed to give readers and organisers the opportunity of planning events without clashing with existing ones, which are already in the 'diary'. It is not intended as a means of advertising and we take no responsibility for errors or omissions. Acceptance is at the discretion of the editor. Please send your updates by email to [pbarnes20@icloud.com.plus.com](mailto:pbarnes20@icloud.com.plus.com) or via methods outlined on Page 4.

Location and name codes below:

## One-Off Events

Date	Time	Event	Where	Tel. No.	Date	Time	Event	Where	Tel. No.
02-Aug	10am	Bumblebee Walk and Talk	Court Lodge Green		23-Sep	9.30am	Lyminge Farmers' Market	LVH	
05-Aug	8am	Boot and Late Summer Fayre	LW		TBC	10am	Autumn Stream Clean	TF	862508
05-Aug	2.30pm	RM Summer Show	RMVH	862616	12-Oct	7.30pm	Lyminge Association AGM	TBC	
24-Aug	10am	Geo-Adventure	LL	See P16	14-Oct	10am	Etchinghill Litter Pick	Meet EVH	07544 670363
01-Sep	7pm	Music on a Friday	LPC		21-Oct	7pm	Autumn Quiz	EVH	07544 670363
09-Sep	10am	Surplus Saturday	TF		23-Nov	4.45pm	Switching on of Christmas Tree Lights	LL	
09-Sep	9.30am	Table Fair	RMVH	863660	26-Nov	4.30pm	Christmas Tree Lighting	Meriden Park & EVH	07544 670363
09-Sep	8am	Boot and Autumn Fayre	LW		03-Dec	6.30pm	ERA AGM	EVH	07544 670363
16-Sep	3pm	Newsletter Deliverers Tea	AUKL	863737	18-Dec		Parcel Delivery		
17-Sep	9am	Autumn Garage Sale		863856					

## Weekly Events

Day	Time	Event	Where	Tel. No.	Day	Time	Event	Where	Tel. No.
Mon	9.30am	Dementia & Me Unit	AUKL	269602	Wed	10am	Baby/Toddler Group	EVH	07817777975
Mon	10am	Bridge Club	LBC	863177	Wed	10.30am	Pilates	RMV	07944028445
Mon	10am	Clear Ears	AUKL	269602	Wed	11am	Singing For All	AUKL	269602
Mon	10.30am	Lyminge Larks (Singing)	LMC	07951572920	Wed <sup>5</sup>	3pm	French Conversation	Call	862972
Mon	10.30am	Chromatic Greys Art Class	EVH	07783575802	Wed	7pm	Tayne Centre Circuits	TC	07925982995
Mon	10.30am	Main Cog Stim Therapy (MCST)	AUKL	269602	Wed	7.30pm	Cantores Dominicae Choir	LVH	07840796383
Mon	5.30pm	Pilates	EVH	07951608008	Thurs	9.30am	Dementia & Me Unit	AUKL	269602
Mon	6.30pm	Ballroom/Latin/Salsa Dancing	TC	07966751991	Thurs	10am	Lyminge Morning Art Group	EVH	01303211364
Mon	6.30pm	Judo Club	LVH	862946	Thurs	10am	Carers' Brunch	AUKL	269602
Mon	7pm	Pilates	EVH	07951608008	Thurs	10.15am	Baby Rhyme Time	LL	03000413131
Mon	7pm	Yoga	RMV	07977503897	Thurs	10.30am	COGS	AUKL	269602
Tues	9am	Seated Yoga	AUKL	269602	Thurs	11.45am	Streetz to Streetz (fish and chips)	AUKL	07955926835
Tues	9am	Tai Chi Qigong	EVH	07402203239	Thurs	12.30pm	Dementia Café	AUKL	269602
Tues	9.30am	Dementia & Me Unit	AUKL	269602	Thurs	2pm	Lyminge Afternoon Art Group	TC	07870494644
Tues	10am	Lyminge Baby & Toddler Group	TC	07870405567	Thurs	3.30pm	Pilates	EVH	07944028445
Tues	10am	Painting and Drawing	AUKL	269602	Thurs	5pm	Pilates	TC	07951608008
Tues	10am	Pottery	AUKL	269602	Thurs	6.15pm	Pilates	TC	07951608008
Tues	10.30am	Poetry Group	LL	03000413131	Thurs	7pm	Short Mat Bowls	LVH	863842
Tues	10.30am	Cognitive Stimulation (COGS)	AUKL	269602	Thurs	7.30pm	Ballroom and Latin Dancing	EVH	07967979610
Tues	11.45am	Pilates	EVH	07834839801	Fri	8am	Chiropody (appointment only)	AUKL	269602
Tues	1.30pm	Pickleball	EVH	863819	Fri	9am	Pilates	AUKL	269602
Tues	5pm	Pilates	EVH	07944028445	Fri	9.30am	Dementia & Me Unit	AUKL	269602
Tues	6.45pm	Short Mat Bowls	LVH	863842	Fri	9.30am	Nikki Barratt Art Group	EVH	07870494644
Wed	8am	Pilates	TC	07951698008	Fri	10.15am	Talk Time	LL	03000413131
Wed	9am	Morning Munchies (breakfast)	AUKL	269602	Fri	10.30am	Main Cog Stim Therapy (MCST)	AUKL	269602
Wed	9.30am	Dementia & Me Unit	AUKL	269602	Fri	10.45am	Movement to Music	AUKL	269602
Wed	9.30am	Age UK Info & Advice – drop in	AUKL	269602	Fri	6pm	Junior Cricket Training Sessions	SPCC	07869283195
Wed	10am	Pilates	TC	07825109670	Fri	7pm	Table Tennis	EVH	

## Monthly Events

When	Time	Event	Where	Tel. No.	When	Time	Event	Where	Tel. No.
1st Mon	2pm	RBL, Elham Valley Branch	St Mary's	862508	Last Wed	7.30pm	Quiz Night	C&H	01303901011
3rd Mon	7pm	Etchinghill Cinema Club	EVH	07544670363	3rd Thurs	7.30pm	LA Committee Meeting	TC	07840796383
Last Mon		Parish Council Meeting	SNL	07715221705	Last Thurs	1.30pm	Dementia Café	AUKL	269602
1st Tues	2pm	Library Reading Group	LL	863879	4th Fri	7.30pm	Beetle Drive	RVH	862616
1st Tues <sup>3</sup>	7.30pm	LHS Talk/Event	TC	03000413131	Last Fri	1.30pm	Team Quiz	AUKL	269602
2nd Tues	2pm	Library Reading Group	LL	03000413131	2nd Sat	10am	Postling Ch. Coffee Morning	PC	863536
3rd Tues <sup>2</sup>	7.30pm	Gardeners' Society	TC	07703149008	2nd Sat	10am	Ethelburga Quilters	EVH	
Last Tues	10.30am	Lyminge Poetry Group	LL	03000413131	4th Sun	10am	Farmers' Market	LVH	
1st Wed	10.30am	Lyminge Friends	LPC	862598	Last Sun**	10am	Springrise Canine Care Pet	EVH	07582407637
4th Wed	2.30pm	RM Circle	RVH	862913					

<sup>1</sup> In term time only <sup>2</sup> Except Jan and Feb <sup>3</sup> Except Jan, Feb, and trip in Aug <sup>4</sup> Except Aug and Dec <sup>5</sup> Not held in August \*\* Every three months

**AUKL**: Age UK Lyminge; **C&H**: Coach & Horses; **EVH**: Etchinghill Village Hall; **ELVH**: Elham Village Hall; **ERA**: Etchinghill Residents' Association; **ES**: Elham Square; **EVLT**: Elham Valley Line Trust; **JF**: Jubilee Field; **KH**: Korf House; **LB**: Laing Bennett; **LBC**: Bowls Club; **LL**: Library; **LMC**: Lyminge Methodist Church; **LPC**: Lyminge Parish Church; **LPS**: Lyminge Primary School; **LVH**: Lyminge Village Hall; **LW**: Lord Whisky; **NP**: Nailbourne Court; **PC**: Postling Church; **PH**: Lord Whisky, Park House; **PVH**: Postling Village Hall; **RVH**: Rhodes Minnis Village Hall; **RMC**: Rhodes Minnis Church; **RMCS**: Rhodes Minnis Cat Sanctuary; **RR**: Rigden Room; **SMVH**: Stelling Minnis Village Hall; **SNL**: See Newsletter for info; **SP**: Sibton Park; **SPCC**: Sibton Park Cricket Club; **TC**: Tayne Centre; **TF**: Tayne Field; **WF**: Well Field



## St Mary and St Ethelburga Parish Church, Lyminge

**Saturday 5th August Acrise Church Festival 10am - 5pm**

**Sunday 6th August Transfiguration of Christ**

Lyminge 10am WOW Service

Paddlesworth 6pm Evensong (BCP)

**Sunday 13th August**

Lyminge 8am Holy Communion CW2

6pm Choral Evensong

**Sunday 20th August**

Lyminge 10am Holy Communion CW1

Paddlesworth 6pm Evensong

**Sunday 27th August**

Paddlesworth 8am Holy Communion BCP

Lyminge 10am Family Praise

**Sunday 3rd September**

Lyminge 10am WOW Service

Paddlesworth 6pm Evensong

To contact the churches, please phone:

Rev Deb Scoble, Curate. The Rectory, Lyminge.

Tel: 01303 862747 [www.elhamvalleygroupofchurches.co.uk](http://www.elhamvalleygroupofchurches.co.uk)

[www.achurchnearyou.com](http://www.achurchnearyou.com)

## Postling Church Services

**6th August 9.30am** Holy Communion

**13th August** No Service in Postling

**20th August** No Service in Postling

**27th August 5.30pm** Tea Service

## Lyminge Methodist Church

A warm welcome awaits you at the following services to be held at **11am**, followed by a time of refreshment and fellowship.

**6th August** Mr Colin Pearson

**13th August** Mr Roy Hollands

**20th August 10.15am** Valley Service at Elham

**27th August** Local arrangement

## Rhodes Minnis Chapel

A warm welcome is extended to anyone who wishes to join us for the following services at 9.30am in our small and beautiful Chapel and to share fellowship after the services over coffee and biscuits.

**6th August** Service will be led by the local congregation

**13th August** Mr. Roy Hollands

**20th August 10.15am** Valley Service at Elham

**27th August** Mr. Ralph Bradshaw



## Christians in Lyminge

**1st September:** Music on a Friday in the Parish Church. BBQ starts at 7pm.

**9th September:** "Churches Ride & Stride" raising money for church buildings. Please phone 01303 862151 for details if you would like take part.

## Lyminge Newsletter

**Terms & Conditions: Copy deadline for next edition - 18 August 2023**

Please email your copy to the editor ([pbarnes20@icloud.com](mailto:pbarnes20@icloud.com)). Your payment must be received before your article or advert can appear in the Newsletter. Invoices will be issued and should be paid ASAP either by BACs, cheque, credit card or cash (details on invoice). **Business adverts** cost from £9.50 per month or £95.00 per year. **Personal and charity adverts and articles** from £3 per month, or £30.00 per year. The annual rate offers 12 entries for the price of 10. Please make cheques payable to '**The Lyminge Association**'. If you do not have email, a typed paper-copy may be left with the payment at the Library. Newsletter printed by Canterbury Print & Mail.

***Lyminge Association accepts no liability for the accuracy of the advertisements or subsequent actions arising in conjunction with advertisers in the newsletter.***

**Further details from Peter Barnes (editor) on 01303 863737 or [pbarnes20@icloud.com](mailto:pbarnes20@icloud.com)**

## District Councillors' Update - August 2023



From: **Cllr Jenny Hollingsbee** - contact: [jenny.hollingsbee@folkestone-hythe.gov.uk](mailto:jenny.hollingsbee@folkestone-hythe.gov.uk)

As Leader of the Conservative Opposition Group, I have regular monthly meetings with the Chief Executive and the Leader. At the full Council on 21 June I asked the Leader to confirm the Administration's position on Otterpool Park. He confirmed the project would go ahead and 'at pace'.

On Nuclear Energy, I attended a presentation by EDF at Dungeness where they outlined the current position and talked about the future of Dungeness. At the moment they employ 945 people. They talked about the Small Modular Reactors that are being developed and the discussions that were taking place with Government. We await further news.

I was pleased to be co-opted to the Kent & Medway Police & Crime Panel – a panel I served on for quite a few years when I was the representative of the District Council. Please do register with [www.mycommunityvoicekent.co.uk](http://www.mycommunityvoicekent.co.uk) to keep in touch with local policing teams. The service sends updates about your local area directly from the police officers themselves.

My first Ward Grant allocation this year, is £200 for Evington Village Hall and I have promised to contribute to the defibrillator for Rhodes Minnis from my Ward Budget. Application forms and guidance can be found at [www.folkestone-hythe.gov.uk/community](http://www.folkestone-hythe.gov.uk/community) I attended the last Lyminge Parish Council Meeting and was pleased to see residents come forward for co-option to the Parish Council.

The Otterpool Park Zest Festival and Otterpool Gallops were very successful and other events are planned. To find out more and to see the Learning Programme do check the website regularly [www.otterpoolpark.org](http://www.otterpoolpark.org) a consultation on Phase 1b 'Creating a Vision for Hill Top and Woodland Ridge' will take place on 9 September 11am-4pm at Sellindge Village Hall. This is open to anyone who would like to get involved or have an influence. JTP Architects Masterplanners Placemakers have been appointed to undertake this work.

From: **Cllr Elaine Martin** - contact: [Elaine.Martin@folkestone-hythe.gov.uk](mailto:Elaine.Martin@folkestone-hythe.gov.uk)

In the last few weeks Stagecoach has announced several changes to the bus routes in this area. The bus service is the responsibility of KCC and we are unable to change anything. The only thing we can do, and are doing, is lobbying KCC and talking to Stagecoach. FHDC were very upset that they were not informed of the cuts before they were announced because Stagecoach are our partners on the levelling up fund works in Folkestone and also at Otterpool Park. The change that is going to have most effect on this area is the change to number 10 route. It is being withdrawn from Eureka Park, Lympne and Port Lympne which means it won't go through Sellindge, Newingreen and Sandling. Also the Sunday service is being withdrawn. There is a rumour that the number 17 route will be affected but it isn't on Stagecoach's list of routes that are being considered for changes. In a meeting with Cllr Jim Martin, the Leader of FHDC, Stagecoach explained that they need to give 70 days notice to have the routes deregistered and have announced these route changes to comply with that requirement. Stagecoach are currently in negotiations with KCC to see what subsidies are available and will report back when these are complete. I will update you when I know the outcome of these negotiations.

When the Green Party were elected, we pledged that we would review the development at Otterpool Park. We have set in motion three reviews - governance, financial and management. All of these reviews are well advanced and will report back to Cabinet in September. It is vital for FHDC's finances that the Otterpool Park development goes ahead. The development will be net-zero and have as little impact on the landscape as possible. Of all the new Garden Villages, Otterpool Park is the most advanced in the development process and, as such, it should be an exemplar.

The Quinn Homes development at Grove Park, Sellindge is about to open their show home. The Councillors will be having a presentation there on Thursday 20th July.

The planning permission at Princes Parade has been extended to allow for contamination reports to be completed and to allow time for community consultations as to what they would like to see on the site. The Council will look at extending public access, and improving the facilities at the Canoe Centre. FHDC remain committed to a replacement for Hythe Pool. We will bring forward proposals for a new pool and facilities at Martello Lakes, which both serve the Hythe and Romney Marsh, and which we will make accessible by bus and bike.

FHDC are backing the levelling up fund regeneration of Folkestone Town Centre, and especially those parts which make the town a better experience for pedestrians, cyclists, and bus users. The Council will back bus station reconfiguration as long as it delivers a better service for bus users.

FHDC now have a dedicated phone number to report missed bin collection for these people who don't have access to a computer with Internet connection; the number is 01303 853660. This number is only for missed bin collections; other issues cannot be reported on it. I would still encourage you to sign up for the My Account service if you are able. Just to let you know, Operation Brock is being put in place from the 14th July for the summer holiday period.

## Etchinghill Update - August 2023

### ETCHINGHILL RESIDENTS' ASSOCIATION (ERA)

**Chairman: David McCombe 07939 076617.** Email: dmccombel@gmail.com

Website: www.etchinghill.info Facebook: Etchinghill Residents

**FILM NIGHT - ETCHINGHILL VILLAGE HALL - MONDAY 21ST AUGUST "LIVING" 12.** Drama, starring Bill Nighy, Aimee Lou Wood and Alex Sharp. Overwhelmed at work and lonely at home, a council bureaucrat's life takes a heartbreaking turn when a medical diagnosis tells him his time is short. Influenced by a local decadent and a vibrant woman, he continues to search for meaning until a simple revelation gives him a purpose to create a legacy for the next generation.

Doors open at 7 pm for a 7.30 pm start. Entry is only £6 pp and includes refreshments and a free raffle. Prior booking is not required and new members are very welcome; please register and pay at the door.

### SUNNINGDALE DEVELOPMENT, ETCHINGHILL - clarification of entrance

An article on Page 6 of the July Newsletter referred to Sunningdale's use of the entrance to the old nursery from Teddars Leas Road for the development of the site. We have been advised that the entrance remains with the current owner and Sunningdale will not be able to use this entrance for their proposed development. All building works will be carried out from the new proposed entrance on Canterbury Road.

Good to see the newly repaired road sign on the grass triangle at the end of Teddars Leas and that the installation of new LED lights along Westfield Lane has now been completed.

**News contact: Jacqui Blandford – 07543 966830 or email: jacqui.blandford@gmail.com**



***No matter where you are from or where you live, the message is the same.***

***Please clear up after your dog has fouled the pavements and footpaths, including the country paths.***

It's more important than ever to keep our outside spaces clean and pleasant for all to enjoy. We have noticed an increasing amount of dog fouling around the village which is not only spoiling the area but it can also have deadly consequences.

If keeping community spaces clean and tidy isn't an incentive enough, those caught failing to pick up after their pets could receive an on-the-spot fine of £1000.

So we're encouraging residents to **Bag It and Bin It** to keep the outdoors safe and clean for everyone.

#### DID YOU KNOW:

Dog waste can be placed in any bin, not just dog waste bins. So remember, it's your dog and your job to pick up their poo!

Editor: pbarnes20@icloud.com



## POSTLING COFFEE & CAKE MORNING SATURDAY 12th August

Thank you to all who have attended our fifth monthly 2023 Village Fund-raiser, for the Pilgrims Hospice. How lovely to catch up with friends, neighbours and meet new residents from the village, our Lyminge friends and new faces from the surrounding area.

We welcome any helping hands or make a cake for this important fund-raiser for the Pilgrims Hospice. Contact Jane 01303.862142 or Jenny 01303.863341.

**Be included, have a good gossip and find out about village events.**

**Our next coffee and cake morning is on Saturday 12th August 10am to 12noon in the beautiful Postling Church. All donations go to the Pilgrims Hospice in their ENTIRETY.**

***"Always remember that you are absolutely unique. Just like everyone else."***

***-Margaret Mead***

In aid of LORD WHISKY SANCTUARY FUND(Charity No 283483)  
Park House Animal Sanctuary Stelling Minnis CT4 6AN  
Tel: 01303 862622 [www.lordwhisky.co.uk](http://www.lordwhisky.co.uk)  
[lord.whisky@btinternet.com](mailto:lord.whisky@btinternet.com)

## Boot & Late Summer Fayre

Saturday 5th August at Park House

Boot Fair from 8am ~ cars £7.50 / vans £10

Entertainment from 9am including The Fortunettes,  
The Ashford Concert Band, Stockbury Dog Club &  
The Folkestone Teeny Boppers.

Classic Vehicles Welcome ~ Hot & Cold Refreshments

Tombola ~ Admission by donation ~ Plenty of parking

## Boot & Autumn Fayre

Saturday 9th September at Park House

*"The greatest glory in living lies not in never  
falling, but in rising every time we fall."*

- Nelson Mandela

Always on the go? Need to slow down?

Would you like to be gently led into a place  
of relaxation, peace and calm?

A time to re-connect, re-coup and re-balance  
An opportunity to release tension and de-stress

Join together with other like-minded people  
for a time of guided meditations

using poems, music, scripture, art and nature

## Quiet Morning

9.30am to 12.30pm

Saturday 16<sup>th</sup> Sept 2023

Venue: Rhodes Minnis Methodist Chapel

Tickets are free, but limited

Please email: [keeley.taylor@btinternet.com](mailto:keeley.taylor@btinternet.com) to book

Refreshments available

## THE TOWER THEATRE FOLKESTONE

FOLKESTONE-HYTHE OPERATIC & DRAMATIC SOCIETY PRESENTS  
AN AMATEUR PRODUCTION BY ARRANGEMENT WITH MUSIC THEATRE INTERNATIONAL

# Sweeney Todd

THE DEMON  
BARBER OF  
FLEET STREET

MUSIC & LYRICS BY

STEPHEN  
SONDHEIM

BOOK BY

HUGH  
WHEELER

From an adaptation by CHRISTOPHER BOND Originally Directed on Broadway by HAROLD PRINCE  
Orchestrations by JONATHAN TUNICK

29 SEPTEMBER - 7 OCTOBER

THE  
TOWER  
THEATRE

A  
FHODS



BOX OFFICE 01303 223925 or [towertheatrefolkestone.co.uk](http://towertheatrefolkestone.co.uk)  
The Tower Theatre, North Road, Shorncliffe, Folkestone CT20 3HL

Registered Charity 1180504

Editor: [pbarnes20@icloud.com](mailto:pbarnes20@icloud.com)

# Pilates + Tayne Centre Lyminge

All abilities welcome

Wednesday  
10:00 - 11:00

Contact Julie. 07825109670

Email :  
[pilates.mbs@gmail.com](mailto:pilates.mbs@gmail.com)

Tel: 01303 863737



**Free Sessions  
Wednesdays  
Term time only  
11am - 12noon**

Age UK Lyminge,  
Everist Court,  
63 Station Road,  
Lyminge,  
CT18 8HQ

**01303 269602 - No need to book**

Registered charity number 1125274. Company number 6589817.  
© Age UK Hythe, Lyminge and Ashford 2023.

Sponsored by



# Art with Claire

**Every Tuesday**

Age UK Lyminge,  
Everist Court,  
63 Station Road,  
Lyminge, CT18 8HQ

**£6**

Hythe, Lyminge & Ashford  
**ageUK**

**10am-12pm**

## AGE UK - LYMINGE



### Come and see us at our Dementia Cafés

*Our café provides a drop-in service for anyone who may need support, information or advice about Dementia. This informal get together can be attended without booking or a referral. See below for our August dates and venues.*

Friday 18th August 1:30pm - 3:30pm  
Age UK Ashford, Farrow Court, Stanhope Road, Ashford, TN23 5RF

Tuesday 15th August 1:30pm - 3:30pm  
Age UK Hythe, Stade Street, Hythe, CT21 6BD

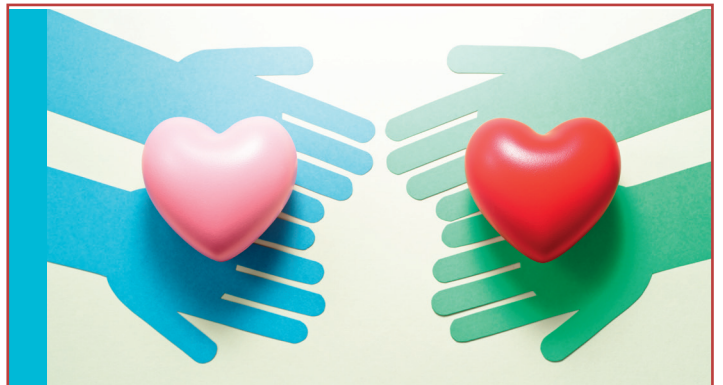
Thursday 10th August 12.30pm - 2:30pm  
Age UK Lyminge, Station Road, Lyminge, CT18 8HQ

Monday 28th August 10.00am - 12.00pm  
Le Café Ganmac, 121 Sandgate Road, Folkestone, CT20 2BL

*We offer a FREE bus service from Hythe to Lyminge  
Collection times are 1:00pm and drop off is 3:45pm (booking essential).*

**For more information call  
01303 269602 or 07379 646426 or email [demo@ageukhla.org.uk](mailto:demo@ageukhla.org.uk)**

Registered charity number 1125274. Company number 6589817. © Age UK Hythe, Lyminge and Ashford 2023.



### Carer's Brunch



*A chance to connect and socialise with other carers of those living with Dementia, whilst we care for your loved one.*

**Lyminge 10.00 - 11.30 (every 4th Thursday of the month)  
Ashford 10.30 - 12noon (every 1st Wednesday of the month)**

**£2.50 minimum donation per person -  
includes bacon sandwich and a hot drink.**



**Jo Gregory - [dementialead@ageukhla.org.uk](mailto:dementialead@ageukhla.org.uk)**

**01303 269602**

**Age UK Lyminge, Everist Court, 63 Station Rd, Lyminge CT18 8HQ  
Age UK Ashford, Farrow Court, Stanhope Rd, Ashford, TN23 5RF**

Registered charity number 1125274. Company number 6589817. © Age UK Hythe, Lyminge and Ashford 2023.



# ETCHINGHILL RESIDENTS' ASSOCIATION

## Film Night

'Living' 12

Monday 21st August 2023

Etchinghill Village Hall - 7 for 7.30pm

Entrance Fee £6pp

Open to new and existing members

Free Refreshments and Raffle

[www.etchinghill.info](http://www.etchinghill.info)



LYMINGE HISTORICAL SOCIETY



Please note that following the usual Summer Break in July and August our talks will recommence in September as follows:

Tuesday September 5<sup>th</sup>, 7.30pm in the Tayne Centre  
**A talk on: Harvey Grammar School, Folkestone**  
 Speaker: Ian Gordon

*All Lyminge a History Books, Parts 1-12 are available to purchase. See below for details.*

Do you have an idea for a story to go in Lyminge a History part 13, now in preparation? Email us with your thoughts.

All *Lyminge a history* publications can be purchased individually through Lyminge Village Store (formerly Lyminge Food and Wine), Lyminge Library, or online via our website using PayPal, direct from Daphne or at our monthly talks.

Plus: purchase Parts 1-5 as a bundle for £22 or Parts 1-12 for £60. Lyminge archaeology chapters in Parts 2,4,6,7,8,10 &12 for £35\*.

**To take advantage of the offer please call Daphne Andrews on 01303 862865. N.B. These bundle offers are not available from The Library or Lyminge Food and Wine.**

\*Postage and packaging extra.

Email: [lymingehistoricalsociety@gmail.com](mailto:lymingehistoricalsociety@gmail.com)

Website: [www.lymingehistoricalsociety.co.uk](http://www.lymingehistoricalsociety.co.uk)

Facebook: [www.facebook.com/Lymingehistoricalsociety](https://www.facebook.com/Lymingehistoricalsociety)

New cook, Tina and the team welcome you to

## The Lord Whisky Tea Rooms

Gate Lane, Rhodes Minnis CT4 6XY

Open 10am - 4pm Monday to Friday

9am - 4pm Saturday & Sunday

*Breakfasts, Lunches, Sunday Roasts, Afternoon Teas, Home-made Cakes, etc.*

We can cater for Birthday Parties, Wakes etc.

**01303 862349 - lord.whisky@btinternet.com**

Editor: pbarnes20@icloud.com



## TALLEST SUNFLOWER COMPETITION - 2023



**Measuring time!**



Please contact :

[lymingegardeners@gmail.com](mailto:lymingegardeners@gmail.com)

or call Anne on 07703149008

if you want your sunflower measured and entered for the competition.



Closing date August 27th.

**May the best plant win!**

Our first Autumn event will be on Tuesday 19<sup>th</sup> September. Look out for details in the September Newsletter.



## Lyminge Friends - August 2023

On Wednesday 5th July, John Buss gave us an excellent talk about *Hawkinge Airfield, 50 years of Aviation History*.

**From now onwards, we have a change of venue. We will meet in St Mary & St Ethelburga Parish Church.**

On Wednesday 2nd August, Alan Haines is coming to talk about *Max Miller*.

Speaker details for Wednesday 5th September will appear next month and will also be posted around Lyminge on the Notice Boards.

Meetings are held at 10.30am in the Parish Church of St Mary & St Ethelburga, in Church Road, Lyminge CT18 8JA. All Welcome, £4 entry.

We are a friendly social group and welcome new members so just drop into a meeting, or if you'd like to talk to one of us first, please call 863500.

Please wear appropriate clothing and bring a blanket with you if you feel the cold.



*"In the end, it's not the years in your life that count. It's the life in your years".*

**- Abraham Lincoln**

Tel: 01303 863737

# SUMMER SHOW

RHODES MINNIS VILLAGE HALL

**Saturday 5 August**

**OPENS 2:30PM**

**PRIZE GIVING 4:00PM**

**REFRESHMENTS**

**Entry Free**

**Raffle**

**Schedules available from**

**Tel. 01303 862616**

## AUTUMN MEDITATION COURSE

Learn some wonderful skills to keep your mind fit  
And to help support your health  
And wellbeing during these difficult times.

**Commencing Saturday 7<sup>th</sup> October 2023**

10.00am - 12.30pm

For 8 weeks

At Lypne Village Hall

For more information and to book a place

Contact Ellen: Tel 01303 230604 or 07740857109

Email: [ejgarrard2712@gmail.com](mailto:ejgarrard2712@gmail.com)



## Rhodes Minnis Circle

In the absence of our chair lady, Marion Hoare, last month's meeting was led by Daphne Andrews who had the pleasure of welcoming six visitors. She introduced the speaker, Ann Finney, who actually needed no introduction at all as she had been many times before. This time her subject was on the life of Marie Lloyd and we were able to join in with the singing of some of her old songs which was most enjoyable. She was given a vote of thanks by Ann Weatherall.

The monthly competition was won by Fran Davis, with Daphne Andrews second and Mary Usher third. Birthday greetings were given to Margaret Chambers.

There is no meeting in August but members are going to the Folkestone Garden Centre for afternoon tea on 23rd August. If you have not already put your name down, there are spaces available. So please contact Marion. We will be back in the Rhodes Minnis Village Hall for our September meeting on the 27th at 2.30pm when Howard Myers will speak on Fire Fighting in Kent. Visitors are always welcome, £2.50 payable at the door. **If you require any further information please contact Marion on 862913 or Daphne on 862865**



## Fifth Trust Update

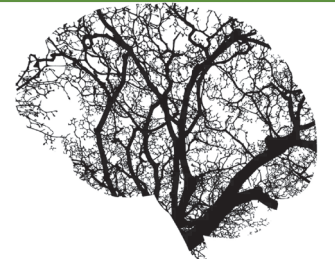
[www.fifthtrust.co.uk](http://www.fifthtrust.co.uk)

We are excited to announce our Charity Golf Day, which will take place on 5th October 2023 at Canterbury Golf Club. . The cost is £75 per person (£300 per team of four). The cost includes a light breakfast on arrival, 18 holes of golf, followed by a three course (late) lunch.

There will be cash prizes for the winning team, etc. Social Enterprise Manager Peter Stratton said: "In an effort to raise some valuable funds to help towards our new sports activity sessions that we are introducing later this year, I thought it was about time we created another special day. Whatever we raise on the day will go towards various equipment to ensure we can offer a wide variety of activities to our students. Applications, offers of sponsorship, or any questions, please contact Peter at: [peter.stratton@fifthtrust.co.uk](mailto:peter.stratton@fifthtrust.co.uk) A deposit of £100 per team is required to secure your place.

## MINDCRAFT EDUCATION

### MENTAL HEALTH COACHING FOR TEENAGERS



As an experienced special needs teacher with a qualification in counselling, I now offer single sessions and a number of courses directed at improving the mental health of teenagers. This can involve focusing on specific areas of concern or more general mental health issues, designed to create happier and more resilient young people.

For more information please contact me on 07458 949222

or go to

[www.mindcraftededucation.co.uk](http://www.mindcraftededucation.co.uk)

## Coach & Horses

### CHECK OPENING HOURS

**For bookings and any help needed, please phone**

**01303 901011 or check**

**Facebook page**

**'Coach & Horses'**



**NO MARKET IN AUG**  
**4TH SUNDAY OF EACH MONTH**  
**LYMINGE FARMERS' MARKET**  
**NEXT: 23 SEPT**

**9:30 - 12:30**  
**LYMINGE VILLAGE HALL**

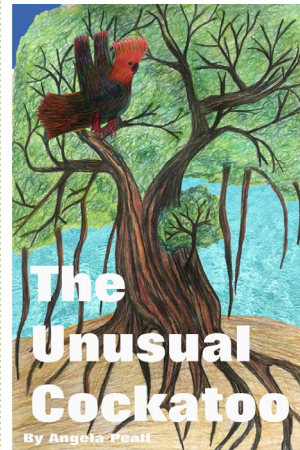
**PIES**  
**CRAFTS**  
**GLASS ORNAMENTS**  
**SWEET TREATS**  
**KIMCHI**  
**VEGAN GRUB**

**BREAD**  
**FRESH VEG**  
**LOCAL BUTCHERS**  
**MONTHLY CHARITY STALL**  
**HOT FOOD/DRINK**  
**AND SO MUCH MORE!!**

**WANT A STALL? TEXT 07547545601 FB/INSTA @LYMINGEFARMERS MARKET**

**FREE ENTRY - PARKING AVAILABLE - CASH AND CARD**

LOCAL AUTHOR/ILLUSTRATOR  
 LAUNCHES TWO CHILDREN'S BOOKS



Authoress **Angela Peall** of Etchinghill has lived all her life in the area and has recently launched two children's books. Both have been colourfully illustrated by her and her husband, Richard.

The first, **'TAOB'**, comes as a hard copy from Amazon (£8.50) whilst the other, **'The Unusual Cockatoo'**, comes as an e-book available through Kindle (£4). Please give her support in this new venture.

**Rhodes Minnis Village Hall**  
 Charity 800345

**TABLE FAIR**

**Saturday 9 September**  
**9.30am - 1pm**  
 (set up from 8.30am)  
 Tables £ 6.00 each  
 and Free Entry  
 Tombola  
 Tea & Coffee available

**For Tables - Elaine 01303 863096**  
**or Doug 01303 863660**  
 Post Code CT4 6XR

**MUSIC ON A FRIDAY**

welcomes  
**'UNDECIDED' and pianist WILL WRIGHT**  
 to their **FREE AUTUMN BBQ**

**LYMINGE PARISH CHURCH**  
 on **1st SEPTEMBER**  
**BBQ, wine and music at 7.00pm**

**ALL FREE**  
 Please come and support  
 your local Church and local talent

*"Tell me and I forget. Teach me and I remember. Involve me and I learn."*

*- Benjamin Franklin*

## Letter To the Editor

Dear Editor,

Having attended several public meetings on the subject of Pentland Homes development at Broad Street and based on village straw polls, I think it's fair to say that the village, almost without exception, is against Pentland Homes' revised proposals for 49 homes.

However, at the last LPC meeting there was a new idea floated which could work to the benefit of all concerned.

This alternative solution could provide a unique opportunity for Pentland and Lyminge to become pathfinders in housing to meet both the current economic traumas and climate change by planning Eco housing.

Eco house building reflects an awareness of both economic and environmental issues. Eco projects can range from simple use of high spec insulation methods, to heat pumps, solar panels and onto Passivhaus construction. There are many completed individual examples from relatively small to huge see [www.homebuilding.co.uk/ideas/inspiring-eco-homes](http://www.homebuilding.co.uk/ideas/inspiring-eco-homes).

An appropriate example is probably the Barratt's prototype at [constructionmanagement.co.uk/barratt-builds-low-carbon-house-of-the-future/](http://constructionmanagement.co.uk/barratt-builds-low-carbon-house-of-the-future/)

By declaring our village a green supporter of Eco housing, we could show F&HDC and the whole of SE Kent, that we are a village that leads the way to a sustainable future. The BIG opportunity is for Lyminge to uniquely create a collection of eco-themed houses that will set precedents for future building in the region. This would be a guide for wider, bigger developments in Kent, such as Otterpool and the multiplicity of other developments that are springing up.

The idea of Lyminge becoming a leader in this exciting field of practical house building for the modern era of climate & energy crisis is surely beguiling and one that could be considered for village support.

This proposal is in no way to say that the 49 houses planned is acceptable but perhaps the ECO building approach would be a basis for a constructive planning debate?

Sincerely **Sheamus J Maher**

### BOYKE MANOR COTTAGES

*Family-run holiday lets that have been running for 12 years*

**Are you looking for somewhere for a break or a longer stay?**

- Two cottages available in the Elham Valley (Ottinge)
- One sleeps 6 and the other sleeps 4
- Can be let individually or together
- Fully equipped holiday cottages rated as 4 star

Provides relaxing holidays in a peaceful rural setting, close to the coast and with a wide range of places to visit in close proximity.

Ideal for a family getaway/holiday or short stays in between house purchases/whilst renovations are being undertaken.

Much more economical than hotels and the accommodation offers very high standards.

**For further details, contact Paul on 07860 452640 or visit [www.boyke-manor-cottages.co.uk](http://www.boyke-manor-cottages.co.uk)**

Editor: [pbarnes20@icloud.com](mailto:pbarnes20@icloud.com)



## Hotfooted Shoes AND HANDBAGS

**25th October**  
10.15am - 4.00pm  
ELHAM VILLAGE HALL



WONDERFUL  
stationery and  
Christmas  
cards from  
FLAMINGO  
PAPERIE.

Lovely JEWELLERY and  
DELICIOUS home made cakes and  
refreshments.

**Donations in aid of  
St. Mary's Church, Elham**

Thank you - Wonka Blakeney  
01233 750571



## Lyminge Judo Club

(Bushido Club registered)

We are a small friendly village club. We welcome and encourage both novices and skilled players and train every Monday evening at Lyminge Village Hall from 6.30pm. Open to all ages from 6 upwards - no upper age limit.

Juniors £2.50 per week; Seniors £3.50 per week. First session free, with no obligation.

**Contact: Craig Munn** email: [craigmunn1@yahoo.com](mailto:craigmunn1@yahoo.com)

Facebook: [www.facebook.com/Lymingejudoclub](http://www.facebook.com/Lymingejudoclub)



Hythe Aqua Swimming Club has vacancies for potential competitive swimmers Level 7 and above. Join a Club with a nationally accredited swim programme. Lessons/Coaching sessions are held on Tuesday & Thursday evenings at Hythe Pool.

We also welcome adult length swimmers to our Adult training on Tuesdays & Thursdays at 9.00pm

**To book your place**

Email: [hytheaqua@btinternet.com](mailto:hytheaqua@btinternet.com) or checkout our website:  
[www.hytheaqua.org.uk](http://www.hytheaqua.org.uk) or **F/book**

# LYMINGE PARISH COUNCIL

Etchinghill - Lyminge - Rhodes Minnis

[www.lymingeparishcouncil.org.uk](http://www.lymingeparishcouncil.org.uk)  
[clerk@lymingeparishcouncil.org.uk](mailto:clerk@lymingeparishcouncil.org.uk)



Forthcoming council and committee agendas are displayed on the council notice boards on Tayne Field (Lyminge), the entrance to the Village Hall car park, (Etchinghill) and the bus stop opposite Home Farm (Rhodes Minnis).

Agendas, minutes and relevant reports are published on the council website. If you would like a copy of council documents please contact the clerk.

## NEW COUNCILLORS

Lyminge Parish Council have welcomed four new councillors.

**Dennis Huntley** who has rejoined the council and has lived in the parish for 40+ years. Dennis is well known locally through work he has done for the council and as a volunteer for the Lyminge Village Hall.

**Elise Moss** who is keen to see the parish, and its residents, thrive. Elise has a degree in engineering and with experience as a treasurer she looks like a strong addition to the Finance and Administration committee.

**Martine Alyson** moved to the parish almost two years ago and has since become a well-liked, happy face. Though she has decades of experience in administration, her true passions lie with more creative vocations and Martine is determined to see the parish flourish.

**Claire Norman** is our final new addition and is an enthusiastic eco-warrior who has lived in the parish for over 40 years. As an ex-police officer Claire is keen to tackle the recent spike in anti-social behaviour and as an environmentalist and leader of Lyminge Primary School's 'Eco Club', Claire wants to see action taken in the parish to ensure that we are going above and beyond to protect wildlife and preserve our beautiful area.

## CO-OPTION

We still have availability for four more councillors and we would be keen to see representatives of Rhodes Minnis and Etchinghill! If you are interested, please contact us.

You do not need to be knowledgeable in political issues etc or have masses of free time.



## SCHOOL VISIT

The 'Eco-Club' at Lyminge Primary School welcomed councillors and gave an insight into the achievements over the past year. From securing over £2000 in funding towards recycling storage to winning eco awards, there is plenty to be proud of as they set an incredible example to us all. Read more on our website.

## TREES IN THE VILLAGE

In mid-July, Bob Baxter came to view the trees in Lyminge as part of the 'Trees in the Village' competition. He thoroughly enjoyed visiting the "tree hot-spots" and remarked at there having been over 6000 trees planted in the parish in the past three years. 6000 and counting!!



# WE ARE HIRING

## General handyperson

- Employed (days are flexible)
- Salary: £26,000 to £34,000 (pro rata - average 16 hours per week)
- Must have full driving licence and access to a vehicle (any points to be declared)
- Must have your own tools.
- DBS check will be required.

For a full job description and details on how to apply please email [clerk@lymingeparishcouncil.org.uk](mailto:clerk@lymingeparishcouncil.org.uk)

Closing date 01.09.23

LPC reserve the right to close sooner if a suitable person is found.

## JOB VACANCY HANDYPERSON

Lyminge Parish Council are seeking to employ a general handyperson, who can work alongside the council in keeping the village tidy and well maintained.

Please email and ask for a full job description or you can find it on our website!

## PLEASE NOTE THERE ARE NO MEETINGS IN AUGUST

Full Council - 25th September 19:30 - 21:30 - Rigden Room, Tayne Centre, Lyminge

Finance and Administration - 11th September 19:00 - 21:00 - Rigden Room, Tayne Centre, Lyminge



## Thoughtful Food....



...is a group of local volunteers looking at our food, and how this impacts climate change. Our aims are to support people to produce more of their own food, and to shop locally, sourcing seasonal produce. We also run a community allotment in Lyminge and welcome new members.

**Contact:** thoughtfulfoodgroup@gmail.com or on Facebook and Instagram @thoughtfulfoodgroup

Next **Thoughtful Food** meeting, **Tuesday 5th September, 7.15pm**, (no meeting in August) at the Coach and Horses Public House

## Young Talent...



Lyminge Squirrel and Cub scouts have had a bumper crop of garlic this year in their raised beds at the Thoughtful Food allotments. Planted in October and left to it's own devices until July garlic has been a fantastically easy plant to grow. Each Squirrel was able to take home a bulb of garlic to use for delicious snacks and dinners.



As a bonus prize, when harvesting their garlic, they came across these wonderful potatoes that they hadn't even planted!

Thoughtful Food says, "Great job everyone. We would love to hear what you made with your garlic. We are always on the lookout for recipes".

Talking of recipes, nothing says summer quite like ratatouille. A delicious French stew of summer vegetables.

## Ratatouille

Fry one sliced onion in olive oil, add garlic and 2 carrots thinly sliced and fry for a bit longer. Add one aubergine, and a red pepper cut up in chunks, and fry until starting to soften. Add water as needed so the bottom does not catch. Add one courgette in thick slices, same again, fry until it starts to soften. Add a tin of chopped tomatoes, mixed herbs, salt and pepper and let it simmer until all the vegetables are cooked through. You can use garden tomatoes instead of the tin tomatoes but try peeling the tomatoes first if they have thick skin. Add fresh herbs from the garden if you have any like thyme, basil or oregano.



If you are a local grower, or have an allotment and generate more produce than you can eat, please consider donating your surplus to FareShare Kent. We distribute surplus food to charities all over Kent and our stocks are at an all-time low. With your help, we can provide local veg boxes to people who can't afford to buy fresh produce for their families.

## FareShare Kent Needs You!

**FareShare Kent** has been a member of the national *FareShare* network since July 2014. Our aim is to ensure good quality surplus food in Kent doesn't go to waste and instead goes to local community and charitable organisations to help them with their work. Alongside *FareShare Kent*, we also run *The Family Foodbank*, which has 80 distribution centres across Kent who hand out food parcels to families and single people experiencing food poverty. *The Family Foodbank* has a team of volunteers who pack donated 'cupboard friendly' foods ready for our drivers to deliver. We can also provide gluten free and hygiene boxes if requested.

We collect donated food and hygiene products from collections points in 12 Tesco stores across the county as well as a few Waitrose and Marks and Spencer stores. However, we have noticed a significant drop in items being donated this way, probably due to the effects of the Cost of Living Crisis. This means that *the Family Foodbank* then has to purchase food to ensure the continued supply of the parcels and at close to spending £1000 a week; this will soon become unsustainable. We regularly launch campaigns to boost our stocks, especially around the seasonal holidays but we are also now looking at new and inventive ways to ask for help.

We are reaching out to anyone who has an allotment, or grows their own produce and finds they have a surplus when they harvest. Ideally, if you are a part of a community, we could come and collect the surplus from one point and then offer some fresh fruit and vegetable boxes alongside our cupboard staples, to encourage a healthier menu. If you feel you can help, or would like some more information, please contact **Debbie Burden on 01233 500477**.

## Very Best Wishes from Thoughtful Food



# Lyminge Climate Action - ideas for the future

Back in May, Lyminge Climate Action teamed up with Thoughtful Food at their Pick up a Plant event. Claire and her merry helpers from the school eco-team shared information about recycling and waste in our area. They also gathered ideas from the community about what they would like to see happening in Lyminge to support sustainability and biodiversity. Here are some of the things that residents popped on post-its and stuck on our tree of ideas

- A clothes swap shop
- Repair café
- More community litter picks
- Sewing and repair workshops
- Promote reuse and redistribution of surplus/unwanted items
- Helping elderly residents with their gardens
- More tree planting
- Community-based gardening
- Bunting making workshop
- Village minibus
- Car share scheme
- More recycling of goods not collected by the council
- "Rag and bone" van to collect items for those who cannot get to the tip.



Reflecting on these it struck me how much of this is already happening in the village. By redistributing and reusing pre-loved items (new term for second-hand) we reduce the carbon footprint of producing and transporting new items. It also saves us money and can often support local charities. Win win win!

We are lucky to have Age UK in Lyminge who do a great job of taking our unwanted items and selling them in their shop to raise funds for the charity. Likewise, the Lyminge Association run a garage safari twice a year in spring and autumn, giving us all another opportunity to redistribute unwanted items and get great pre-loved bargains in the process. Thoughtful Food have successfully run their 'Pick up a Plant' and 'Surplus Saturday' events for several years now, helping gardeners to redistribute excess produce.

So perhaps the ideas that we could build on might be a car share scheme or the repair café or sewing workshops. I am aware of initiatives already like the "knit and natter" so perhaps some nimble-fingered people may want to team up to run some workshops? We know of a successful repair café in Ashford and are hoping to invite someone from there to come and share tips and expertise on how to start a repair café with us in the near future. If you would like to get involved with something like this or you think you could help be a "rag and bone" man helping take things to the household waste site for those who don't have transport do get in touch [kakellett78@gmail.com](mailto:kakellett78@gmail.com)

## Bee Walk & Talk with Bumblebee Conservation Trust on 2nd August ...and lots more!!

By the nature of those already involved in LCA, helping our biodiversity in the face of climate change has been a key focus for us. We have had lots of success with our tree planting, Our Wild Acre and biodiversity recording projects. Recording and monitoring is a key to understanding how populations of species are changing and hopefully adapting to the changes. In terms of agriculture and food security protecting our pollinating insects is vital.

Please join us for a bumblebee *Walk & Talk* in Lyminge on Wednesday 2nd August, starting at 10am on Court Lodge Green, hosted by the Bumblebee Conservation Trust. Everyone is welcome, please come along to meet their experts and to learn about bees and about opportunities to get involved. Please feel free to contact us on [aydan.khan@bumblebeeconservation.org](mailto:aydan.khan@bumblebeeconservation.org) or [tony.king@lymingeparishcouncil.org.uk](mailto:tony.king@lymingeparishcouncil.org.uk).



Geo-Adventure: Geo-Futurists  
Thu, Aug 24, 10:00  
Lyminge Library • Lyminge

Geo-Adventure is running an event organised by Kent Downs AONB from Lyminge Library on 24th August. It will explore the local landscape, following the route of a Nailbourne chalk stream - one of the world's rarest habitats! where you will learn about the geology and how this helps to create this specialised habitat. Visit [www.eventbrite.co.uk/o/kent-downs-geopark-31903321857](http://www.eventbrite.co.uk/o/kent-downs-geopark-31903321857) to book a free place.

Also, there is still time to participate in the UK-wide Big Butterfly Count organised by Butterfly Conservation ([bigbutterflycount.butterfly-conservation.org/](http://bigbutterflycount.butterfly-conservation.org/)).





POP ME ON THE FRIDGE

**MOBILE  
FISH &  
CHIPS**



**EVERY  
THURSDAY**

*From*

**11.45am - 12.45pm**

**Age UK Car Park  
Eat In Cafe  
or Take Away**



**STREETZ 2 STREETZ**  
TELEPHONE:

**07955 926 835**

Major Cards Accepted

**Freshly Prepared  
Breakfasts & Light Lunches  
Home Baked Cakes  
Vintage Afternoon Teas  
Coffees  
Teas  
Takeaway Available  
Private Functions**

Open Tuesday to Saturday  
9am to 3pm  
Dog Friendly

THE COFFEE CABIN TEA ROOM LTD.  
CANTERBURY ROAD, LYMINGE, KENT.  
CT18 8HU. 01303 864222  
Instagram @thecoffeecabintearoomltd  
Find us on Google Maps

**Sarah  
Holbrook**  
PAINTER & DECORATOR

Elevate Your Space with 20  
Years of Expertise

Services Tailored to your Specification

Internal & External Work

Paper Hanging

Domestic & Commercial Undertaken

Peace of Mind - Fully Insured

Competitive Rates - Top-notch service at affordable prices

Free Quotations: Get a clear understanding of costs with  
no-obligation quotes.

☎ 07891743740 ✉ sholbrookdecorating@gmail.com

**Jazz** The George Inn  
Stone Street  
CT4 6DF

Every Tuesday 8.30pm and  
Thursday 8.15pm

Come early and enjoy home cooked  
English food, local ales and fine wines.

Open for food from 12 noon and  
6pm, Tuesday to Saturday

Sunday Roast from 12 noon

Best to book to avoid disappointment

Phone Michael: 01227 709170

or E-mail:

landlord@thegeorgeononestreet.co.uk

www.thegeorgeononestreet.co.uk

Find us on Facebook:

The George Inn on Stone Street

*"Don't judge each day by the harvest  
you reap but by the seeds that you  
plant."*

-Robert Louis Stevenson

# Kent's Leading Mobility Specialists

Over 200 new & used scooters available

**USED SCOOTERS FROM £395**

**BEDS FROM £1395**

**CHAIRS FROM £595**

Huge range of Shoes & slippers for problem feet

**HOME DEMONSTRATION LET US COME TO YOU**

**STAIRLIFTS**



**FOLKESTONE STORE**

**Tel: 01303 274574**

**[www.safehandsmobility.co.uk](http://www.safehandsmobility.co.uk)**

**[folkestone@shmobility.co.uk](mailto:folkestone@shmobility.co.uk)**

Compass House, 347-349

Cheriton Road, CT19 4BP

**ALSO AT BIRCHINGTON**



## HEAVER & LINCH

Bespoke Handmade Kitchens & Furniture

Bespoke Handmade Cabinet Makers based in Lyminge, covering Kent and the South East.

Over 30 years experience in creating stunning solid wood kitchens and furniture.

Get in touch for any advice, recommendations and a free quote.

**Tel: 07832 360 603 or 07832 363 963**

**Email: [heaverlinch@outlook.com](mailto:heaverlinch@outlook.com)**

**Website: [www.heaverandlinch.co.uk](http://www.heaverandlinch.co.uk)**



Don't be led up the garden path...

...choose an agent that gives straight forward, honest advice.



Call today for a free, no obligation valuation

Bridge Office - 01227 831999  
[bridge@colebrooksturrock.com](mailto:bridge@colebrooksturrock.com)  
 88 High Street, Bridge, CT4 5LB

Elham Office - 01303 840422  
[elham@colebrooksturrock.com](mailto:elham@colebrooksturrock.com)  
 Bank Buildings, Elham, CT4 6TD

[colebrooksturrock.com](http://colebrooksturrock.com)





## Lyminge Baby & Toddler Group

We are excited to welcome you to our local parent, baby and toddler group.

Please come along, meet new mums and dads for a chat and a play.

It costs £3.50 with tea and coffee provided along with snacks for your child.

Tuesdays, term times only. 10am to 12noon at the Tayne Centre.

First session is free.

Follow us on Facebook and Instagram.

Contact Ellen at 07870405567.

Early Years Education & Day  
Care for Children Aged 2-5

# LYMINGE Pre-school

Every Day Adventures  
at our **OUTSTANDING** pre-school

**COUNTRYSIDE SETTING**

**FANTASTIC FACILITIES & GARDENS**

**QUALIFIED & LONGSTANDING TEAM**

**WRAP AROUND CARE 8-5PM DAILY**

**HOLIDAY CLUB OUTSIDE OF TERM TIME**

**AFTER-SCHOOL CLUB**

**PARENT PORTAL**



Rated **OUTSTANDING**  
by OFSTED 2022

We'd love to hear from you:

 01303 863149

 [LYMINGEPRESCHOOL@GMAIL.COM](mailto:LYMINGEPRESCHOOL@GMAIL.COM)

## Etchinghill **Baby & Toddler GROUP**

10.15-11.30am every Wednesday  
at Etchinghill Village Hall  
£2.50 per child

Come along to Etchinghill's Parent and Toddler group welcoming children from 0-3. We have plenty of toys and snacks for the little ones, and there is always tea coffee and cakes for the adults. For further information call Chrissy on 07811682045 or Ruth on 07817777975, look at Parent and Child Etchinghill Facebook page or email us as [parentandchildetchinghill@gmail.com](mailto:parentandchildetchinghill@gmail.com).



## The Lyminge Newsletter

can be viewed online (**and in colour**) at  
[www.lyminge.org.uk/newsletter/](http://www.lyminge.org.uk/newsletter/)  
and by then clicking on the current issue.  
Back-issues can also be viewed via this route.



## BADGERS BRIDGE NURSERY

*" Bridging the indoor and outdoor learning environment for  
children in their Early Years"*

Badgers Bridge is set in the idyllic countryside of Postling, just outside Lyminge. We are a small and friendly Preschool who blend the Montessori principles with the outdoor learning ethos.

  
**Ofsted**  
Outstanding  
Provider

We were awarded Outstanding by Ofsted in 2018 in every area. This is a real achievement and we are really proud of the staff who work tirelessly to provide a stimulating and caring environment for the children of Badgers Bridge. The inspector was particularly impressed with our Forest School. *"Children enjoy limitless opportunities to explore, investigate and work together in the natural woodland environment. Staff skilfully inspire children to develop a significant understanding of the world in which they live".*

*".....exemplary relationships between staff provide excellent role models for children and promote high standards of behaviour. Children make outstanding progress during their time at the nursery".*

**Exciting news! We have opened our new setting in Elham. We offer the same unique outdoor experiences for children from 20 months old. Come along and see us at The Gore!"** So please call or email us:

Email : [badgersbridge@gmail.com](mailto:badgersbridge@gmail.com)

Website : [www.badgersbridge.co.uk](http://www.badgersbridge.co.uk)

Tel : 01303 862951

**Postling Village Hall, The Street, Postling CT21 4EU**

Ofsted Registered : 395128

Companies House Reg : OC375571



## With our excellent local knowledge & experienced staff we will get you moving

- ✓ Free professional photography, property floorplan, Rightmove premium listing & social media advertising

**01303 863393**

The Estate Office,  
8 Station Road,  
Lyminge,  
Kent CT18 8HP

Follow us on  
social media



[www.laingbennett.co.uk](http://www.laingbennett.co.uk)

## The Lyminge Association

*We're here to support and develop our community!!*

### Contacts:

**Chair:** Nancy Benham 01303 863076 or 07840796383  
nancybenham@aol.com

**Vice Chair:** Peter Barnes 01303 863737 or 07808775302  
pbarnes20@icloud.com

**Treasurer:** Martin Fry 01303 863177  
martin@Rhodesminnis.org.uk

**Committee Members:** Adrian Willcox, Marian Chubb, Richard Chubb, Dave Hunt-Cooke, Gillian Heywood, Robin Macknochie, Derek Smith, Ray Smith, Penny Stephens

**Newsletter:** As for Peter Barnes above

## ETCHINGHILL VILLAGE HALL HIRE FEES

The next time you are thinking of holding a function why not try Etchinghill Village Hall, which holds the highest Hallmark accreditation level (Hallmark 3), with its excellent facilities, including ample parking space.

The standard hire charge for the main hall and kitchen are:

ANY DAY OF THE WEEK' ANY TIME £12 PER HOUR

No winter supplements. No extra charges.

Ideal for family parties and get togethers.

The use of a separate Committee Room is also available.

For all bookings or enquiries please contact:

**The Duty Manager on 07514 758936**



**Large hall with stage, new kitchen and flexible hire**

Excellent parking facilities, disabled access, proximity to playgrounds and playing fields. Beautiful countryside location.

### Capacity:

200 people dancing / audience seating, 100 with tables  
Small rooms available for up to 50 seated

Find out how we can help you with your next event:

**BOOK ONLINE:** [lymingevillagehall.org.uk](http://lymingevillagehall.org.uk)

**EMAIL:** [admin@lymingevillagehall.org.uk](mailto:admin@lymingevillagehall.org.uk)

**INFO:** 07525 909185

Full pricing can be found on our website.

### Guideline prices:

Main Hall hire: £88.40 (Fri / Sat evenings)

£47.60 (Sat / Sun morning or afternoon)

Find us on Facebook

Registered charity 28145

## Rhodes Minnis Village Hall

Charity No.800345

Rhodes Minnis Village Hall is located 2kms (1¼miles) from Lyminge and just off Longage Hill and Whitehorse Lane in Chapel Lane.

The hall, which holds Hallmark accreditation, is ideal for children's parties, band practice, quizzes, meetings, wedding receptions, fundraising events and much more. It has a fully equipped kitchen.

### Rates

Mon to Fri £18 per session £48 all day

Sat & Sun £23 per session

£33 for evening session and £69 all day

### Sessions

AM session 08.30 - 12.30

PM session 13.30 - 17.30

Evening session 18.00 - 23.45

Separate rates for Bank Holidays and New Year and special rates for regular users.

For all bookings and enquiries please contact:

**Mick & Dorothy Athow: 01303 862616**

**e-mail: [booking-rmvh@outlook.com](mailto:booking-rmvh@outlook.com)**

## TAYNE CENTRE

### HALL HIRE

*Previously known as the Lyminge Methodist Church Hall*

**Clayson Hall:** £15 per hour

**Rigden Room:** £10 per hour

**Wesley Room:** £10 per hour

**Church:** £20 per hour

### Enquiries:

**Tel: 07716 521 405**

**Email: [maryeblanch@outlook.com](mailto:maryeblanch@outlook.com)**



## Lyminge Library Opening Times

Monday 10am - 2pm

Tuesday 12noon - 5pm

Wednesday 10am - 2pm

Thursday 10am - 5pm

Friday 10am - 2pm

Saturday 9am - 1pm

**Tel: 03000413131 [lymingelibrary@kent.gov.uk](mailto:lymingelibrary@kent.gov.uk)**

## JOSHUA KELSEY

GARDEN MAINTENANCE  
HEDGE CUTTING  
HEDGE PLANTING  
LAWN MOWING  
AND MUCH MORE - JUST ASK

07938013750

joshkelseytrees@gmail.com



Property Clearance and Clean  
Licenced Waste Removal and Disposal  
Festival / Event Waste Services  
Overgrown Garden Clearance  
Handyman Service  
Defunct Appliance Removal



01227 903247 | INFO@2JM.UK | WWW.2JM.UK

## Bus times

for buses from Lyminge The Sidings to  
Folkestone town centre via Etchinghill & Cheriton High Street

MONDAYS TO SATURDAYS except Bank Holidays

There are route 17 buses at 0705 (not Saturdays), 0749, 0909, 0934 (not Saturdays), 1004, 1034, 1104, 1204, 1304, 1404, 1514, 1614, 1619 (schooldays only), 1654 (schooldays only), 1719, 1749, 1834, and 1929.

There are also route 18 buses to Sandling Station & Hythe - for times see our website or call the number below.

SUNDAYS & BANK HOLIDAYS

There are route 17 buses at 1032, 1302, 1532 and 1802.

for buses from Lyminge Wesley Terrace to  
Canterbury city centre via Elham, Barham & Bridge

MONDAYS TO SATURDAYS except Bank Holidays

There are route 17 buses at 0727 (schooldays only), 0732, 0752, 0903, 0938, 1028, 1128, 1235 (1228 on Saturdays), 1335, 1443, 1608 (1613 on Saturdays), 1703, and 1803.

There are also route 18 buses to Canterbury via Stelling Minnis and Bossingham - for times see our website or call the number below.

SUNDAYS & BANK HOLIDAYS

There are route 17 buses at 0903, 1133, 1403, and 1633.

These bus times will operate from 12 February 2023.



0345 241 8000 @StagecoachSE  
customerhelpSE@stagecoachbus.com  
stagecoachbus.com

## SNIPPERS & CLIPPERS UNISEX HAIR SALON

APPOINTMENT NOT ALWAYS NEEDED

WEDDINGS & SPECIAL OCCASIONS

SHELLAC NAILS

GENTS WELCOME

FREE WIFI

4 Station Road, Lyminge  
Folkestone  
Kent, CT18 8HP

01303 647 222

info@snippersandclippers.co.uk

Find us on  
Google+

Find us on  
facebook

Editor: pbarnes20@icloud.com

## DAVID HAIME

ARCHITECTURAL TECHNOLOGIST  
BUILDING TECHNICAL DESIGN  
AND CONSTRUCTION DRAWING  
SERVICES.  
PROJECT MANAGEMENT

**CIAT**  
Registered Practice  
Chartered Institute of Architectural Technologists

BUILDING PLANS FROM PORCH TO NEW BUILD.  
PLANNING/BUILDING CONTROL/STRUCTURAL CALCS.  
COVERING KENT/SUSSEX/SURREY.

LYMINGE, KENT CT18 8HA  
TEL: +44 7974 156510  
EMAIL: D.HAIME@BTINTERNET.COM

## Kingdom

CARPET CO.

- Carpets Supplied & Fitted
- Carpets Professionally Cleaned
- Carpets Whip Edged & Cotton Bound

Whatever your carpet need, give us a call for a  
**FREE** estimate / assessment.

Over 50 years combined experience.

07943 764 442  
Email: kingdom.carpet.co@gmail.com

## GEORGE MILLER

BOILER & HEATING ENGINEERS

- Gas & Oil Boilers
- Central Heating
- Hot Water Systems

01303 901070  
service@georgemiller.co.uk  
248 Cheriton Road,  
Folkestone, CT19 4DN

OFTEC WORCESTER BOSCH safe REGISTER

georgemiller.co.uk

## Anna Lindley

(RVN, Dip.A.Physio)

### Anna's Animal Physiotherapy

For dogs, cats & small pets

- Offering physiotherapy assessment and treatment of dogs, cats and small animals.
- I use a combination of manual therapy, laser, ultrasound therapy, TENS, kinesiology tape and exercises to rehabilitate your/their pet depending on the needs. I also address environmental and exercise factors that can help your pet with their condition.
- I now have a **NEW** treatment room where I can offer further assessment of your pet using a stance analyser. This identifies the mildest of lameness and addresses areas of compensation. I also offer home visits. Physiotherapy can help with arthritis and the ageing pet, post operative orthopaedic surgery, neurological, spinal conditions and many more conditions.
- I am fully insured with over 15 yrs experience working with animals. I am a member of the International Association of Animal Therapists (IAAT).
- For more information please visit my website:  
annasanimalphysio.co.uk or feel free to contact me on  
07944 606453 or anna@annasanimalphysio.co.uk



## Snippers and Clippers Barbers - Lyminge

Please call Richard for availability on  
07522 494969

*(Home appointments also available for  
gentlemen with limited mobility)*

4 Station Road, Lyminge CT18 8HP

## Andy Mannering Flooring

SPECIALISING IN AMTICO AND  
KARNDEAN LUXURY VINYL TILES



- Also safety flooring, rubber flooring, etc.
- Commercial and domestic work undertaken
- No job too small
- Free estimates and advice given
- Over 35 years experience
- Fully insured

**Telephone:** 0797 434 7248 or 01303 863095

**Email:** info@andymanneringflooring.com

Please visit my website for further information and feedback

**www.andymanneringflooring.com**

## DILTON MINI SKIP HIRE



Ballast, Hardcore, Sand  
and Topsoil Supplied

REGISTERED WASTE CARRIER

**01303 812448 or 07799 433754**

## Red Dragon I.T. Ltd.



- Windows, Mac & Linux Systems
- PC Health Checks
- Wired & Wireless Networks
- Website Design
- Graphic Design

T: 01303 723456 | E: info@rdit.co.uk | www.rdit.co.uk  
The Old Granary, Hanover Mill, Church Rd, Mersham, TN25 6NU

## Rhodes Minnis Cat Sanctuary



REHOMING & BOARDING CATTERY

- Our Sanctuary takes in and rehomes  
250 unwanted cats and kittens each year.  
A variety of cats are always available to  
suitable homes.

- 5\* Boarding Cattery under 2018 regulations  
- We are open to visitors every day from  
10am-1pm & 2-4pm. No appointment needed.

T: 01303 862 243

E: rhodmminiscats@gmail.com

Facebook: @rhodmminiscats

www.rhodmminiscatsanctuary.com



Seathwaite, Green Lane, Rhodes Minnis, Kent. CT4 6XU  
Reg. Charity No. 262245

*'Helping you enjoy your garden'*

## CRT Gardening

All general garden and major landscaping redesign work will be undertaken including: full or minor garden design, hard and soft landscaping, new fencing and decking installation and repairs as we are Jacksons Fencing approved installers, hedge trimming and cutting, small to medium tree work.

For a free quotation call or text Karl Dodd on 07967 442518  
or email karl.dodd@live.co.uk

Fully Insured



Hawkinge

## Veterinary Surgery

Independently owned veterinary surgery for all types of small animals.

Opening hours: Monday to Friday 08:00-19:00 Saturday 08:30-13:00

24hour emergency service

TEL: 01303 764190

Hawkinge Veterinary Surgery, 9b Defiant Close, Hawkinge CT18 7SU

www.hawkingevetsurgery.co.uk



**ROBERT KENT** Cert. fp  
FUNERAL DIRECTOR

Direct  
Cremation

£999

Fair Priced  
Cremation

£1950

ONE FIXED PRICE INCLUDING  
ALL CREMATION FEES

01303 684062

**RKFUNERALS.COM**

## SCRUBBERS - Est. 1988

THE HOME AND COMMERCIAL CLEANERS

One off, regular or moving day 'Blitz'

Oven cleaning - Ironing

Carpet cleaning and more...

For a friendly and reliable service

Free Estimates

Tel: 01303 249288 or 07834 128671

## Computer support & repairs by local people

*Customer service is our priority*

- \*Remote IT support for business or home
- \*New & refurbished sales
- \*Call-outs for business or domestic users
- \*Preventative maintenance & upgrades
- \*Repairs to most phones, tablets & devices

enquiries@thecomputerpeopleltd.co.uk



Church Approach,  
New Romney,  
TN28 8AS  
01797 363385



Acrise Electrical Services Limited

Design - Install - Maintain

Tel: 01303 656007 Mob: 07803 421240

Email: info@acrise-electrical.co.uk

Website: acrise-electrical.co.uk

*Domestic, commercial, industrial & agricultural  
electricians serving the Elham Valley and surroundings.*

## Tressenden Designs

A seamstress and costume maker with 8 years of experience.

- ♦ Clothing alterations ♦ Repair work undertaken ♦ Made-to-measure; create a bespoke piece for those special occasions
- ♦ Modern and vintage designs ♦ Costumes, ball gowns and wedding dresses

For more information or a quote please contact Amy on: Mobile: 07853 202304 Email: amy.louise.ford@hotmail.co.uk



## Financial Planning

**David Gridley - Chartered Financial Planner**

Range of quality advice from a fully qualified adviser:

- Pre- and Post-Retirement Planning
- Investment Planning
- Inheritance Tax Planning

For further information, please contact our Lyminge office

David Gridley FPFs

Tel: 01303 863959 Email: davidgridley@sjpp.co.uk

**MWH**

Window and gutter cleaning service

**Mark Haley**



Lyminge and surrounding areas

For a free no obligation quote, please contact me

Mobile: 07738 479202

Home: 01303 863 702 Email: haleymark161@gmail.com

Find us also on Facebook

**Ashman Consulting Ltd**



**Straightforward I.T.**

**Advice  
Training  
Solutions  
Support**

**Steve Ashman  
07702641981**

**info@ashman-consulting.co.uk**

**T. Metcalfe Fencing Contractors**

Approved Expert Installer for Jacksons Fencing  
Established over 30 years  
Fully insured - Highly experienced teams



Panel fencing, gates, decking, pergolas, post & rail,  
stock fencing, security, landscaping & tree surgery.

**01303 840201 07790 290 155**

metcalfefencing@btinternet.com

Proprietor - Derek Burr,  
Ash Ridge House, Elham



## Fincham Plumbing & Heating

We specialise in bathroom remodelling, including all tiling & pipework  
Natural gas boiler servicing, Installation, Maintenance, Repairs, Replacement

All your plumbing requirements

Martin is a Qualified Plumber & Gas Engineer with over 30 years experience

Gas Safe, CIPHE, WIAPS registered

**Rosemary & Martin Fincham**

**07835 851 706 martinfincham@sky.com**



**Lou Lloyd  
Carpenter**

**loulloyd@rocketmail.com  
07984 426214**

**Kitchens, Flooring, Wardrobes,  
Doors, Decking and more!**

**HAND MADE CURTAINS,  
ROMAN BLINDS & SOFT  
FURNISHING**

**CURTAIN ALTERATIONS**

**TEL: VALERY WREN 01303 237755**



**D & S DOUBLE GLAZING SERVICES**

01303 863689 - 07912317915

We are a local company that specialise in double glazing repairs offering a wide range of service's that include: Replacement double glazed units - Locks - Hinges - Handles - Rubber Seals - Gaskets.

For a free estimate please call: 07912317915 or 01303 863689

or email: dsdoubleglazingservices@gmail.com



**CEDAR TREE CARE** City & Guilds

All types of tree work undertaken NPTC

Crown lifting, crown reductions,  
dismantling and removals, hedge maintenance,  
pollarding, stump grinding and removal, mobile saw milling,  
wood land maintenance, all year round seasoned logs available  
Fully insured and NPTC qualified with over 15 years experience  
Call Tom: 07769 908027 email:linchlot5@gmail.com

**SPEARPOINT  
TREE SERVICES**

All Aspects of Tree  
Work Undertaken  
NPTC Qualified  
Fully Insured  
Please call **Shane** for  
a Free Quote  
**07963 203564** or  
**01303 621992**



**Sarah de Rougemont**

Craftsman/Co-ordinator

**UPHOLSTERY**

All commissions considered  
01227 455841 or 07973 377817



FULLY INSURED

## Elham Dog Training Club

Dog training and Pet care services

- Puppies from 12 weeks old
- Kennel Club Good Citizen Dog Scheme Puppy through to Gold
- 1-2-1 home-based puppy training also available
- Other pet care, dog walking and day cover available
- Other fun classes available - ask for details

Lyn Fagg 07866 234820

Email: Elhamdtc@gmail.com



FULLY INSURED

## D.M.B. Plastering

All aspects undertaken  
*Interior. Exterior. Plastering. Rendering.  
Coving. Ceilings. Wall. Floors  
Finest quality assured. CSCS Certified.*  
30 years experience.

Free estimates. Reliable service. Fully insured.

Call **David** on **07818 607209**

## Ewin Electrical

Contact Simon for any electrical maintenance, refurbishments or upgrades with a friendly, clean and professional approach to work  
07891103065

info@ewinselectrical.co.uk www.ewinselectrical.co.uk



### Need to talk?

Confidential and compassionate qualified counsellor here to listen.

Please call or text Natasha on 07593 794321

All messages replied to

Email: forestlodgetherapy@gmail.com

www.forestlodgecounselling.com



Forest Lodge  
Counselling & Therapy



FILEHURST ASSOCIATES

## YOUR COMPLETE REMOVALS AND STORAGE SOLUTION

01303 239990

info@filehurst.co.uk

Domestic & Business Removals - UK wide & France  
Business Document Storage

Call Nick for a no-obligation quote.

## KJB GARDEN SERVICES

Weeding, Pruning, Mowing, Hedge Cutting & General Maintenance

**01303 862181** or **07704 989 402**

**Over 35 years experience**

## B.M. Plumbing & Maintenance Services

Local Lyminge Tradesman

Plumbing and heating works. Complete bathroom install including tiling. General building maintenance undertaken. No job too big. No job too small.

Cheaper rates for senior citizens

**07890854128** Benmillsplumbing@hotmail.co.uk



House Clearance covering South East Kent.....and beyond!  
**CAROL CREES CLEARANCES**



- Est. over 30 years  
Full/part house clearance  
Fair prices paid  
Antique/Vintage/Retro/Modern  
Registered rubbish carrier

Contact **Simon Cullen** on **07745 421680** or **sijnzo@aol.com**



www.eastkentfootcare.co.uk



**07745 532075**

**Podiatry, Chiropody,  
Foot Health**

Treating and managing foot and nail conditions, corns, callus, insoles, ingrown nails, diabetic foot care

Total garden care for all your needs

## TIM MILLETT

Grass Maintenance, General Gardening, Small & Medium Size Tree Work, Stump Grinding and Wood chipping  
Fencing Repairs & New Installations  
Turfing, Hard & Soft Landscaping

Free Estimates - Fully Insured

**01303 863676**

**07752 880583**

Email: **info@tmhorticulture.co.uk**

## N.P.C.

**Domestic Appliance Services**

*Service and repair of washing machines, tumble driers, dishwashers, cleaners and small electrical work.*

*For a prompt and friendly service*

Call Neil Collard 01303 892234 or 07798716044  
or Google me on Yell.com



**Your Local Electrician  
For all your electrical needs**

- 18th Edition/Part P Registered
  - Insured & all work guaranteed
  - All electrical work carried out including EV charging points
  - Covering Lyminge, Etchinghill & surrounding villages
- Call for a free, no obligation quote and to discuss your electrical requirements.



**07878 457018**

**01303 814372**

info@hughes-electrical.co.uk www.hughes-electrical.co.uk

## JON DAUGHTERS - Local Builder

All aspects of general building works undertaken including: roofing, kitchens, bathrooms and small extensions

**Trading for over 30 years Free quotes, no obligations, fully insured**

**Telephone: 01303 863371 Email: daughters777@hotmail.co.uk**





**APX PROJECT  
MANAGEMENT**

From design to build, we use trusted quality trade professionals along with reliable suppliers to ensure budgets are met, with high standards maintained. If you're looking to -

- Extend your property
- Carry out an external or internal refurbishment
- Convert an existing building into a new dwelling

Please contact: paul@apxprojectmanagement.co.uk 07487 364155



**Dennis Huntley  
Chimney Sweep**



Wood burners and multifuel stoves installed  
Hearths and fireplaces built & installed  
Over 40 years' experience

**01303 862 343 • 07850 784 365**

dennis.huntley@talktalk.net www.dennishuntley.co.uk



**Auto Economy Centre**  
Fully equipped Mechanical Repair & Service Centre  
With the latest diagnostic equipment  
Half price MOTs when booked with any service  
**01303 863656**  
Orchard Garage, Canterbury Rd, Etchinghill  
www.autoeconomycentre.com

**AIR LINK CARS**

(You pack up, we pick up)  
Airport, Seaport & Long Distance Travel Specialists.  
The Family Run Business where service really counts  
Estate cars and People Carriers



Fixed price 24hrs a day. No extras.  
Written Confirmation of booking.  
For the Easy Airport Link, Think AIR LINK!  
**01303 670370 - 07766 824 474**  
airlinkcars@yahoo.com

**Gosbee  
LANDSCAPES**

FENCING | GATES | PAVING | RESIN BONDING  
• Over 35 years experience • Jacksons Approved Installer  
• Marshalls approved • Check-a-trade registered

Call Martin Gosbee: 07974 835 511 | 01303 863 337

GOSBEECONSTRUCTION@GMAIL.COM  
GOSBEE.CO.UK



**Sunhouse Electrical**

Your local reliable Electrician  
Part P Registered & Elecsa Approved  
On Electrical Safety Register & Fully Insured  
For a free quotation call James on

**01303 766333**

www.sunhouse-electrical.com

**KW CONSTRUCTION**  
PLASTERING & RENDERING SPECIALIST

ALL GENERAL BUILDING INCLUDING:  
ROOFING, BRICKWORK, TILING, PATIOS,  
LANDSCAPING, SCREEDING, GROUNDWORK,  
DRAINAGE, EXTENSIONS, RENOVATIONS,  
REPAIRS & MAINTENANCE.

30 YEARS EXPERIENCE, COMPETITIVE RATES,  
A FULLY INSURED, PROMPT & RELIABLE  
HIGH QUALITY LOCAL BUILDER

KENNY 07743488361

**HANDYMAN  
SERVICES**  
SJW

www.Facebook.com/sjwoodhandyman  
www.Instagram.com/sjw.handymanservices  
07796 384857

**LYMINGE FOOD & WINE**  
01303 862225



Our new opening times are:  
Mon – Sat 7:00-20:00  
Sunday & Bank Holidays  
8:00 - 19:00



We offer National Lottery, ATM terminal,  
Post Office & PayPoint services.



Tel: 07904311554 /  
07980897382  
www.akhealthcare.org.uk

As osteopaths, Adam and Katie can help patients suffering from a wide variety of conditions including arthritic pain, circulatory problems, frozen shoulder, back pain, sciatica and much more. Please visit our website or give us a call for more information.

**AK Healthcare,  
Garden Suite,  
4 Station Road, Lyminge**

**Park House Sanctuary Boarding Kennels & Cattery**  
Park House, Stelling Minnis CT4 6AN

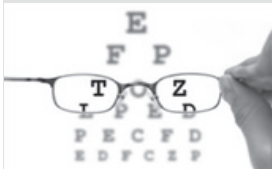
Brick-Built Heated Kennels. Daily Walks ~ Reasonable Rates  
Dogs must be fully inoculated. Heated Cat Chalets  
Quiet Area Inspection Invited.  
To book or for further information, call 01303 862622  
or email lord.whisky@btinternet.com  
www.lordwhisky.co.uk

**South East Aerial & Satellite Solutions**

Digital – Freeview – Satellite – Aerials  
Supply and fit of quality digital installations, FREEVIEW, SKY, aerials, poor reception and problem solving, upgrades and repairs by fully accredited engineers  
Free quotations and advice, fixed prices, fully insured



**NO CALL-OUT CHARGE**  
07825 168010 - 01303 862361



**HOME VISITING OPTOMETRIST - providing professional eye care in your home**

If you are over 60 years of age and no longer able to get out on your own, then you are eligible for a NHS sight test in your own home. Please call to arrange an appointment:

**Elaine Edwards BSc(Hons)MCOptom 01303 840541**

Registered with the General Optical Council (01-15421) Member of the College of Optometrists Member of the Association of Optometrists



**T.M. GRIGGS**

01303 489795 07854 098395  
tobystreesurgery@gmail.com



**Garden Clearance - Turfing - Hedge Cutting  
Tree Work - Stump Grinding - Fence Repair**

**DYNO-ROD**



We've been  
unblocking  
sinks, drains  
& toilets  
in Kent  
since 1965

- Quick Response
- CCTV Drain Inspections
- Drainage Repairs
- Pre-purchase Surveys

For a FREE no obligation quote  
contact Mark or Peter on:

**01233 621108  
07557 616630**

## FRESHLOOK GARDENS

Regular lawn mowing service. Garden design. Hard and soft landscaping. General garden work, fencing and decking. Turfing hedge cutting, small and medium tree work. Water features, ponds and patios.

For free quotation ring **Danny Scott**  
**01303 242140** or **07795510093**  
**mrdanscott89@gmail.com**

Established since 1990. Fully insured.

## THE HANDY FELLOW



**A TRUSTED LOCAL SERVICE  
CALL 07534485049  
ONE.HANDY.FELLOW@GMAIL.COM**

## Computer Repairs

01303 241325  
07968 129902

PCs, MACs, Laptops, Tablets & printers,  
Upgrades & Repairs, Internet & Email, virus removal,  
Office Setup, Backup & Recovery & much more ...  
Tuition available by a qualified tutor.

Usual Fee **£55**

Web sites built & hosted from £10 per month

See [www.computers-in-lyminge.co.uk](http://www.computers-in-lyminge.co.uk) for details



General Landscaping Including  
Fencing • Turfing • Paving

**Gavin Allfree**

T 07495 299711 E [gavinallfree@google.com](mailto:gavinallfree@google.com)



Approved  
Mobile  
Workshop

**Alan Croucher**  
**Caravan Engineer**



**07921 480919 - 01303 863194**  
**Caravans & Motorhomes "WE COME TO YOU"**  
[www.arcmobilecaravanservices.com](http://www.arcmobilecaravanservices.com)

*"Your manufacturer's warranty is safe in our hands"*

Local Tradesman

## J Tappenden

Established over 40 years ago

Painter/Decorator

**01303 862467  
077755 78008**



## A. J. Athow

**BUILDER & DECORATOR  
GENERAL MAINTENANCE**

Telephone: 01303 862616

Mobile: 07541 792238

Email: [tony@athow.co.uk](mailto:tony@athow.co.uk)

## Jackson Plumbing Property Maintenance

*Complete bathrooms and tiling  
No job too small. Special rates for OAP's.*

**Telephone: home/evening 01303 270691  
or daytime 07773 089398 or 07864 929826**

## Trevor Law Electrical Installations

Serving Elham Valley for 30 years  
Part P Registered

**07850 970087**



## Ralph Allard Chimney Sweep

All chimneys, boilers and stoves swept.  
Brush and Vacuum. Certificates issued.  
HETAS and NACS registered, fully insured.

Member of National Association of Chimney Sweeps

**01303 844465 or 07813716654**



## JBS BUILDERS

Specialising in Driveways, Brickwork, Patios, Fencing, Landscape Gardening. Tree work undertaken (lopping, felling and clearing).

General household repairs, painting, plastering, power jetting & cleaning.

No job too small!!! All work guaranteed and insured.

**For free advice and quotations please call: 07825 168010/ 01303862361 (anytime)**





**The newly installed bench at Rhodes Minnis Methodist Church**, installed in the grounds to allow anyone and everyone (including the congregation) to enjoy the peaceful countryside and their surroundings.



**A pétanque competition between Etchinghill, Elham and Lyminge was held at the Etchinghill Village Hall on Saturday 15th July.**

An enjoyable and sociable time was had by all despite that little edge from all three teams that they would really like to win. Having organised the event, Etchinghill was disappointed in coming last as Lyminge took the trophy. Well deserved winners.

A return match will definitely be required next year.



**Newly installed Mayor of Hythe**

On Sunday 16 July, members of **Lyminge Church Choir** attended a civic service in Hythe. During this service Lyminge organist, **Anita Jones**, (on the left of Councillor Abena Akuffo-Kelly, Chair of F&HDC) was installed as this year's **Mayor of Hythe**.

**Lyminge Primary School Fair**

Sweets galore and drooling mouths of children attending the Lyminge Primary School Fair on 8 July.





## LYMINGE THEN AND NOW

Our monthly look at how Lyminge has changed over the years, with thanks to Lyminge Historical Society.



The view on the left dates to around 1903, and shows the beginning of development along Station Road in response to the arrival of the railway in 1885. At this date, there was still a long way to go to create the parade of shops and houses we know today. To the right, you can see that houses have reached only as far as what are now numbers 48 and 50 Station Road. On the left-hand side of the road the buildings standing in 1903 are all still there, although the one that served as the Post Office until quite recently had still to be built. The photographer is standing immediately outside what was then the Post Office, which later was also a dairy for a period, and is now a private house known as the Old Dairy. 120 years ago, much of the commercial life of the village was still around the High Street, although this soon changed as more and more new shops were built around Station and Canterbury Roads, creating the commercial hub that still survives today, though in much reduced form compared with what existed up to 20-30 years ago.



### Cantores Annual Prom Concert in the Village Hall

Lyminge was treated to its very own prom concert...without the cannons!! The programme consisted of "Gods, Kings, Commoners", 16th Century compositions, humorous poetry through to musical medleys from Les Miserables and Simon and Garfunkel. The usual Last Night of the Proms favourites - Rule Britannia, Land of Hope and Glory and Jerusalem, all helped to raise the spirits of many present.