

THE LYMINGE NEWSLETTER

For the communities of LYMINGE, ETCHINGHILL, RHODES MINNIS and POSTLING

January 2023

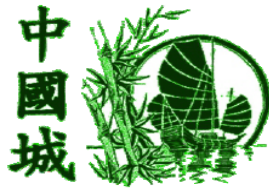
Produced by
THE LYMINGE ASSOCIATION
www.lyminge.org.uk

From The Lyminge Association

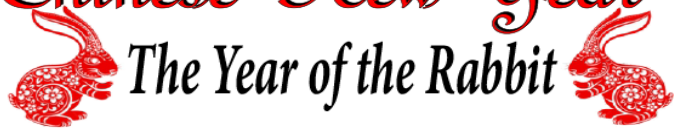


Wishing all our Readers
a very Happy New Year
and that all your dreams become realities!!

China
China



Chinese New Year
The Year of the Rabbit



Come and Celebrate 2023 with us
Chinese New Year Celebration



Tues. 24th & Weds. 25th January

Special 5 course meal

£37 per person

includes a Lion Dance & Fireworks



Fireworks
around 9pm



14th Feb. Valentine's Day Special

£27.50 per person



To book your table please pop in or phone 01303 863 288 or 07539 200 804

Margaret Saunders' Meanderings

Late Autumn and early Winter winds have whipped away the leaves from trees, leaving the landscape a little more bare. When the first frosts come, these will strip the trees further and as we near the shortest day, Winter will feel very much more present.

Checking on the water level in the Nailbourne always holds an attraction for me, as well as watching and listening to the movement of the water, as it hurries its way down the valley. An aging bridge made from old railway sleepers has recently been removed and a new gate installed a little further on which gives easier access to the Elham Valley Way. The bridge I think would have been where the railway crossed the Nailbourne on this short stretch of water, with right angle bends at each end.



After observing this change, my eyes wander to the fields and hill to the east and rest on a particularly large field, dotted with sheep who appear to be contentedly grazing, with seemingly not a care in the world. The sun is gentle and softens the colours of the scene. Surprised at hearing a sheep bleating, I search for the cause, but can see none. Now another sheep has joined in and gradually more and more take up the cry and begin to move across the field. It is not long before both bleating and movement gain momentum with sheep running and gathering more and more as they go. The whole field is in motion and I still cannot see the cause, but by this time, I know it is likely to be food or fear, the former being the more probable.

Then the cause becomes apparent. A tractor is moving out from Stonebridge Farm into the field with a huge cylindrical bale of hay in its fork. Turning left, it begins to climb the hill, the

nearest sheep running behind in an attempt to keep up. Gradually a great wake of sheep, all the sheep, are careering up the hill until finally the tractor turns to face downhill. Clearly the sheep know exactly what is happening and begin to get in the way as the driver lowers the fork to release the bale. It tumbles to the ground and then begins to roll down the hill, unravelling as it does so. Either side of the now long strip of hay the sheep gather to feed, jostling each other to find the best spot. Only two sheep remain outside of this huge conglomeration and they seem totally unimpressed by the behaviour of their fellow field dwellers and continue grazing, one either side of the band of hay. Silence has descended once again as eating, or more like gorging, becomes the new occupation.

Continuing my walk, I gather fallen larch cones for seasonal decorations and hangings. Their small cones dotted along twigs and the little protrusions either side of the twigs add to their attraction. Not long ago field mushrooms could be found here and there but with Autumn now past, these too have gone.

Two weeks pass and the first frost is here etching the fallen leaves with rime. The Nailbourne has swelled and is moving more swiftly and the long shadows of Winter stretch across the field, where the sheep are spread out once more. Pale patches indicate where the hay has been scattered, but little of it remains - the ewes are carrying the next generation of lambs and need all the sustenance they can find. As the sun dips behind the land, a chill sets in indicating it is time to turn for home.



LYMINGE VILLAGE HALL presents.....

The inaugural concert of Lyminge and East Kent's newest band.....

shed those winter blues while
having a fun evening with family
and friends raising money for the
village hall!



Friday 27th January 2023 @ 7:30pm
£5 a head or £50 a table of 10-12
tickets from gerry@dcruz.eu

Diary of Forthcoming Events

This page is printed to give readers and organisers the opportunity of planning events without clashing with existing ones, which are already in the 'diary'. It is not intended as a means of advertising and we take no responsibility for errors or omissions. Acceptance is at the discretion of the editor. Please send your updates by email to pbarnes20@icloud.com.plus.com or via methods outlined on Page 4.

Location and name codes below:

One-Off Events

Date	Time	Event	Where	Tel. No.	Date	Time	Event	Where	Tel. No.
2023					18-Mar	4pm	Cantores - Vivaldi's Gloria	St John's, Folkestone	07840796383
06-Jan	2.30pm	Opening of Tayne Field Play Area	TF		13-21 May		Lyminge Festival		863076
17-Jan	7.30pm	Gardeners' Society AGM	TC	07703149008	20/21 May		Garden Safari		863856

Weekly Events

Day	Time	Event	Where	Tel. No.	Day	Time	Event	Where	Tel. No.
Mon	9.30am	Dementia & Me Unit	AUKL	269602	Wed	10am	Painting and drawing	AUKL	269602
Mon	10am	Open House Coffee House	EVH	863394	Wed	10.30am	Pilates	RMV	07944028445
Mon	10am	Bridge Club	LBC	863177	Wed	2pm	Bingo (Start date TBC)	EVH	
Mon	10.30am	Lyminge Larks (Singing)	LMC	07951572920	Wed ⁵	3pm	French Conversation	Call	862972
Mon	10.30am	Cognitive Stimulation Therapy	AUKL	269602	Wed	7pm	Tayne Centre Circuits	TC	07925982995
Mon	11am	Pilates	TC	07825109670	Wed	7.30pm	Cantores Dominicae Choir	LVH	07840796383
Mon	5.30pm	Pilates	EVH	07951608008	Thurs	10am	Lyminge Morning Art Group	EVH	01303211364
Mon	6.30pm	Ballroom/Latin/Salsa Dancing	TC	07966751991	Thurs	10am	Dementia & Me Unit	AUKL	269602
Mon	6.30pm	Judo Club	LVH	862946	Thurs	10.15am	Baby Rhyme Time	LL	03000413131
Mon	7pm	Pilates	EVH	07951608008	Thurs	10.30am	Cognitive Stimulation Therapy	AUKL	269602
Mon	7.30pm	Yoga	RMV	07977503897	Thurs	11.45am	Streetz to Streetz (fish and chips)	AUKL	07955926835
Tues	9.30am	Dementia & Me Unit	AUKL	269602	Thurs	2pm	Lyminge Afternoon Art Group	TC	07870494644
Tues	9.30am	Dance Fitness Class	EVH		Thurs	3.30pm	Pilates	EVH	07944028445
Tues	9.45am	Young at Heart Dance/Fitness	EVH	07565182259	Thurs	6pm	Pilates	TC	07951608008
Tues	10am	Lyminge Baby & Toddler Group	TC	07870405567	Thurs	6.15pm	Pilates	EVH	
Tues	10.30am	Poetry Group	LL		Thurs	6.45pm	Pilates	TC	07951608008
Tues	10.30am	Cognitive Stimulation (Cogs)	JC	269602	Thurs	7pm	Short Mat Bowls	LVH	863842
Tues	11.45am	Pilates	EVH	07834839801	Thurs	7.30pm	Pilates	EVH	07951698008
Tues	2pm	Seated Yoga	AUKL	269602	Thurs	7.30pm	Ballroom and Latin Dancing	EVH	07967979610
Tues	2pm	Pickleball	EVH	863819	Fri	8am	Chiropody (appointment only)	AUKL	269602
Tues	5pm	Pilates	EVH	07944028445	Fri	9.30am	Dementia & Me Unit	AUKL	269602
Tues	6.45pm	Short Mat Bowls	LVH	863842	Fri	10am	Feel a Fairy Tale Sensory	EVH	07800737936
Wed	9.30am	Dementia & Me Unit	AUKL	269602	Fri	10.15am	Talk Time	LL	
Wed	9.30am	Age UK Info & Advice – drop in	AUKL	269602	Fri	10.45am	Music	AUKL	269602
Wed	9.30am	Morning munchies (breakfast)	AUKL	269603	Fri	7pm	Table Tennis	EVH	
Wed	10am	Pilates	TC	07825109670		Soon	Reading Group	LL	03000413131
Wed	10am	Baby/Toddler Group	EVH						

Monthly Events

When	Time	Event	Where	tel. no.	when	time	Event	Where	Tel. No.
1st Mon	2pm	RBL, Elham Valley	St Mary's	862508	4th Wed	2.30pm	RM Circle	RVH	862913
3rd Mon	7pm	Etchinghill Cinema Club	EVH	07544670363	Last Wed	7.30pm	Quiz Night	C&H	01303901011
Last Mon		Parish Council Meeting	SNL	07715221705	3rd Thurs	7.30pm	LA Committee Meeting	TC	07840796383
1st Tues ³	7.30pm	LHS Talk/Event	TC	863879	Last Thurs	1.30pm	Dementia Café	AUKL	269602
2nd Tues	2pm	Library Reading Group	LL	862972	4th Fri	7.30pm	Beetle Drive	RVH	862616
3rd Tues ²	7.30pm	Gardeners' Society	TC	07703149008	Last Fri	1.30pm	Team Quiz	AUKL	269602
Last Tues	10.30am	Lyminge Poetry Group	LL	03000413131	2nd Sat	10am	Postling Ch. Coffee Morning	PC	863536
1st Wed	10.30am	Lyminge Friends	LMC	862598	2nd Sat	10am	Ethelburga Quilters	EVH	
2nd Wed	11am	Singing For All	AUKL	269602					

¹ In term time only ² Except Jan and Feb ³ Except Jan, Feb, and trip in Aug ⁴ Except Aug and Dec ⁵ Not held in August

AUKL: Age UK Lyminge; **C&H**: Coach & Horses; **EVH**: Etchinghill Village Hall; **ELVH**: Elham Village Hall; **ERA**: Etchinghill Residents' Association; **ES**: Elham Square; **EVLT**: Elham Valley Line Trust; **JF**: Jubilee Field; **KH**: Korf House; **LB**: Laing Bennett; **LBC**: Bowls Club; **LL**: Library; **LMC**: Lyminge Methodist Church; **LPC**: Lyminge Parish Church; **LPS**: Lyminge Primary School; **LVH**: Lyminge Village Hall; **LW**: Lord Whisky; **NP**: Nailbourne Court; **PC**: Postling Church; **PH**: Lord Whisky, Park House; **PVH**: Postling Village Hall; **RVH**: Rhodes Minnis Village Hall; **RMC**: Rhodes Minnis Church; **RMCS**: Rhodes Minnis Cat Sanctuary; **RR**: Rigden Room; **SMVH**: Stelling Minnis Village Hall; **SNL**: See Newsletter for info; **SP**: Sibton Park; **SPCC**: Sibton Park Cricket Club; **TC**: Tayne Centre; **TF**: Tayne Field; **WF**: Well Field



St Mary and St Ethelburga Parish Church, Lyminge

Sunday 1st January

Postling 10am Benefice Eucharist

Sunday 8th January - Epiphany

Lyminge 8am Holy Communion - BCP
6pm Sung Evensong

Sunday 15th January

Lyminge 10am Holy Communion CW1
Paddlesworth 6pm Evensong

Sunday 22nd January

Paddlesworth 8am
Lyminge 10am Family Praise Service

Sunday 29th January - Candlemas

Postling 10am Benefice Service

Sunday 5th February

Lyminge 10am WOW Service
Paddlesworth 6pm Evensong BCP

To contact the churches, please phone:
Rev Deb Scoble, Curate. The Rectory, Lyminge.
Tel: 01303 862747 www.elhamvalleygroupofchurches.co.uk
www.achurchnearyou.com

Postling Church Services

1st January 10am Benefice Service in Elham
8th January No service in Postling
15th January No service in Postling
22nd January 5pm Tea Service
29th January 10am Benefice service in Postling Church

Lyminge Methodist Church

A warm welcome awaits you at the following services to be held at **11am**, followed by a time of refreshment and fellowship.

8th January Mr Richard Blackwell

15th January 10am United Service at Parish Church

22nd January Rev. Gill Songer (United Service with Anglicans)

29th January 10.15am Valley Covenant Service at Elham

Rhodes Minnis Chapel

A warm welcome is extended to anyone who wishes to join us for the following services at 9.30am in our small and beautiful Chapel and to share fellowship after the services over coffee and biscuits.

1st January No Service

8th January Mr. Richard Blackwell

15th January Rev. Gill Songer

22nd January Mrs. Christine Slater

29th January No Service here but a united annual Covenant service at Elham at 10.15am

Christians in Lyminge

A big **"Thank you"** to everyone who helped deliver the Christmas cards around the village. It really was a team effort.

Week of Christian Unity, when the churches share their worship: The service on **15th January** will be held in the **Parish Church** starting at 10am.

On 22nd January the service will be held in the Methodist Church starting at 11am.



Lyminge Newsletter

Terms & Conditions: Copy deadline for next edition - 18 January 2023

Please email your copy to the editor (pbarnes20@icloud.com). Your payment must be received before your article or advert can appear in the Newsletter. Invoices will be issued and should be paid ASAP either by BACs, cheque, credit card or cash (details on invoice). **Business adverts** cost from £9.50 per month or £95.00 per year. **Personal and charity adverts and articles** from £3 per month, or £30.00 per year. The annual rate offers 12 entries for the price of 10. Please make cheques payable to **'The Lyminge Association'**. If you do not have email, a typed paper-copy may be left with the payment at the Library. Newsletter printed by Canterbury Print & Mail.

Lyminge Association accepts no liability for the accuracy of the advertisements or subsequent actions arising in conjunction with advertisers in the newsletter.

Further details from Peter Barnes (editor) on 01303 863737 or pbarnes20@icloud.com



JOIN LYMINGE YOUTH ACTION AND LYMINGE PARISH COUNCIL FOR THE OPENING OF **THE NEW TAYNE FIELD PLAY PARK**

2.30pm FRIDAY 6 JANUARY

After years of planning and fundraising, and a couple of months of construction, we are DELIGHTED to announce the new Tayne Field park will be opening on Friday 6th January, at 2.30pm. We'd love you to join us to celebrate the opening of this wonderful new play area for our community.

We've been watching the build with excitement over the past weeks, and can't wait to see local families enjoying the new equipment.

The LYA committee - Tara Anderson, Nicola Wilkinson, Adam Woodbridge, Mark Towse and Rachel Bartlett - want to thank everyone who has shown their support over the years, and given so generously to the cause, often more than once! In particular, we would like to show our gratitude to: Cllr Jenny Hollingsbee - Cllr Susan Carey - Gary Harrison - Dennis Huntley - Adam Woodbridge - Ray Smith - Peter Barnes - Jane Seymour - RDHCT - Tory Foundation - The Lyminge Association - Laing Bennett - The Coach and Horses.

A big thank you also to LYA's extended team of supporters who have donated or helped out at cake sales, discos, fetes and fairs, including: Sarah Bourne - Carol Lloyd-Price - Lucy Lloyd-Price - Caroline Burt - Christelle King - Julia Tesoro - Claire Norman - Emma Harvey - Dave Woolgar - Katy Towse - Matt Anderson - Steff Wilkinson.

We know many more of you have also helped out wherever you can - sorry if we missed your name off the list, but we are truly grateful.. And mostly we could not have done it without the hundreds of people that have donated their pennies and pounds in donation pots over the years.



Together, we did it. Now let's enjoy it!

District Councillors' Update - January 2023

'Your District Today' was delivered to all households in the Folkestone & Hythe District in early December. The magazine is issued every six months and provides an update on various council projects - regeneration, housing, community safety and more. It's also available online in the news archive section of the council website dated 28 November. The council website also has much more information on the council's work and you can also see the papers that go to council meetings and watch webcasts of our meetings including the Planning Committee.

Jenny has been taking the lead on co-ordinating work across the district to provide 'warm spaces' for people to use in the daytime and so save heating costs. The added benefit is that people who might otherwise be alone get to meet others. You can look for a warm space (and register a space) at <https://www.warmwelcome.uk/> For those worried about meeting everyday costs there are a number of schemes both national and local which may be able to help. Details of these are at folkestone-hythe.gov.uk/cost-of-living-support There are also leaflets with this information for those without internet access and we'd be happy to send one to anyone who contacts us.

Another local initiative is a call for people to donate good quality coats (for adults and children) that can be given to those in need. Please take any such donations to the Folkestone Community Hub at Age UK South Kent Coast, 65 Shaftesbury Avenue, Folkestone, CT19 4NS.

We're pleased to report that for the ninth year running, your District Council has been given a Customer Service Excellence award. This national accreditation looks at how the council deals with residents from consultations to call handling and initiatives such as 'my account' (if you haven't signed up yet then do please take a look on the website). The external assessor said 'The council has shown a great deal of commitment to continually developing its offer to customers.' Our congratulations to the staff across the council for their hard work and commitment in their work on behalf of us all.

We love all the Christmas lights and trees across the parish. Everyone seems to have made a particular effort this year. Susan was delighted to lead the official switch on of lights on the Christmas tree in Etchinghill on 27 November and the music from Shepway Brass in the village hall was as good as ever.

We wish you all a Happy New Year.

Susan Carey (susan.carey@folkestone-hythe.gov.uk 01303 670561) & **Cllr Jenny Hollingsbee** (Jenny.hollingsbee@folkestone-hythe.gov.uk 07887918458) - your district councillors for North Downs West, Folkestone and Hythe District Council



RNA Energy's Ambition to Tackle Climate Change and Boost Biodiversity in Hythe



RNA Energy is a team made up of solar and battery storage experts with a vision to switch the UK's energy production away from polluting fossil fuels to cleaner renewable energy sources. For us, we have chosen our specialism in solar energy as we know this green energy supply can be installed quickly, cheaply and be a key pillar in achieving net zero by 2030. Furthermore, the nature of solar farms allows us to easily boost biodiversity on site by supporting and enhancing priority habitats and species.

We are proud of what we do, and we are delighted to share our plans to deliver a new solar project at Pent Farm, Postling. The proposed solar project will cover 22ha of land and export up to 18MW of electricity, providing enough energy to power around 3,800 homes. The site is adjacent to Stanford substation, making it an excellent location to supply the national grid with our clean renewable energy.

As we are sure members of Lyminge Climate Action Group will agree, climate change is the most urgent and pressing crisis we are facing as a species. Our planet is heating up and we need to seriously consider ways to reduce carbon emissions whilst also protecting wildlife. Solar panels are quick and easy to install and generate 100 times more energy than it takes to make them over a 40-year period. They also do not need direct sunlight to generate power, and can generate energy in all weather conditions. We believe this makes solar energy a sure and quick way to reduce carbon emissions to instantly tackle climate change.

For Pent Farm, a central aspect of bringing forward the plans is working in partnership with the landowner to increase biodiversity within the area. The beauty of solar farms is they can easily co-exist and enhance local wildlife in the area as they do not take up a lot of space. Our plans comprise 4ha of habitat protection and creation on site plus further enrichment plans outside the boundary, such as new ponds, woodland, wet woodland, reed bed, and meadow areas. The plans include further measures to enhance connectivity of existing habitats and the creation of exciting new ones that will directly benefit species such as barn owl, brown hare and pollinators. Existing ponds on site are ecologically important for common toad and frog breeding. These areas will be buffered by additional wild flower areas and terrestrial hibernation sites. Bird and bat boxes will be installed to encourage nesting and roosting around the site, while ditches and hedgerows will be enhanced to provide habitat connectivity for small mammals and farmland birds such as yellowhammer.

A key concern raised during the public consultation relates to developing a solar farm on agricultural land – which some argue should be used to produce crops – and RNA would like to address this directly. For Pent Farm, the fields are low quality 3b grade clay soil that have been managed regeneratively for more than 10 years. Regenerative farming involves building soil health through direct drilling crops, reduced chemical inputs and not ploughing. Despite using these principles and successfully building soil biology back into the fields, this area of the farm still

suffers from soil loss during prolonged and heavy rainfall events that are increasing in frequency through the effects of climate change. Soil loss impacts water quality and aquatic habitats leading to a direct negative impact on biodiversity.

Reduced biodiversity means less of the plants and animals that are critical to pollination, cleaning water and keeping soil fertile. To address food security concerns in the UK, we need to restore wildlife, build climate change resilience into the landscape and create a sustainable balance where biodiversity enrichment on less productive land contributes to wider food production needs on higher grade soils. Pent Farm will not be destroying an agricultural haven, but instead using the land to enhance biodiversity and tackle climate change.

We hope our passion for solar shines through (much like the sun in Hythe!) and demonstrates our ambition to tackle climate change and boost biodiversity through our plans for Pent Farm. Although our public consultation has concluded, our dedicated email address - pentfarmsolar@havingyoursay.co.uk – is still active, so please get in touch if you have any questions or comments.

We look forward to analysing the consultation responses and we will keep you updated as the plans progress.

Etchinghill Update - January 2023

ETCHINGHILL RESIDENTS' ASSOCIATION (ERA)

Chairman: David McCombe, 07939 076617 Email dmccombe1@gmail.com

Website: www.etchinghill.info Facebook: Etchinghill Residents

FILM NIGHTS - ETCHINGHILL VILLAGE HALL - 7.30pm JANUARY 16TH "DEATH ON THE NILE (2022)" 12 Crime / Drama / Mystery. Starring Kenneth Branagh, Annette Bening and Tom Bateman.

Hercule Poirot (Kenneth Branagh) plans a spectacular Egyptian vacation aboard a glamorous river steamer but the trip turns into a search for a murderer after a glamorous couple's honeymoon is cut tragically short. Set against a sweeping landscape of pyramids and desert vistas, with an ensemble cast, Agatha Christie's beloved mystery novel is a tale of unbridled passion and jealousy, filled with wicked twists and turns that will have you guessing until the finale. Doors open at 7pm for a 7.30 start. Entry is only £6pp and includes refreshments and a free raffle. Prior booking is not required and new members are very welcome; please register at the door.

ERA AGM - SUNDAY 4TH DECEMBER. After the usual formalities, the committee and officers were voted in for 2023 and there was a public open forum in which matters affecting the neighbourhood were discussed. Of major concern was the potential impact of continuing and planned residential developments within the hamlet and surrounding villages e.g. roads, footpaths and sewage removal etc. The ERA is monitoring the situation closely with Lyminge Parish Council, to help ensure that any negative impact to residents is kept to a minimum, and that we hope to see some enhancements to the local area. The minutes of the AGM can be obtained by email from the ERA Chairman upon request.

A HAPPY NEW YEAR TO EVERYONE! We would like to wish all residents, their families and friends, a Happy, Safe and Healthy New Year.

News contact: Jacqui Blandford - 07543 966830 or email: jacqui.blandford@gmail.com



FIRE AND DRIVING SAFETY ARE ESSENTIAL FREE REFRESHER COURSES COMING SOON

WATCH THIS SPACE

FOLKESTONE - HYTHE OPERATIC & DRAMATIC SOCIETY PRESENT

GOODNIGHT MISTER TOM

Thursday 16 - Saturday 18 March

This amateur production of 'Goodnight Mister Tom' is presented by arrangement with Concord Theatricals Ltd. on behalf of Samuel French Ltd. www.concordtheatricals.co.uk

Doors open one hour before each performance

BOX OFFICE 01303 223925
or towertheatrefolkestone.co.uk

The Tower Theatre, North Road,
Shorncliffe, Folkestone CT20 3HL

Registered Charity 1180504



Editor: pbarnes20@icloud.com

Beetle Drive Family Fun Game



Rhodes Minnis Village Hall
BEETLE DRIVE

Friday, 27 January - 7:30pm

Adults £2, Children 50p.

Tea, coffee and juice provided. There will also be a raffle.



Lyminge Judo Club

(British Judo Club Registered)

We are a small friendly village club. We welcome and encourage both novices and skilled players and train every Monday evening at Lyminge Village Hall from 6.30pm. Open to all ages from 6 upwards - no upper age limit.

Juniors £2.50 per week; Seniors £3.50 per week. First session free, with no obligation.

Contact: Selwyn Nichols 01303 862946 or selwyn_nichols@hotmail.com

Kent's Leading Mobility Specialists

USED SCOOTERS FROM £395

BEDS FROM £995

CHAIRS FROM £595

Our quality made to measure multi-positional rise and recline chairs provide the ultimate in personal comfort

Full Scooter Service FROM £39.50

HOME DEMONSTRATION



Folkestone. Compass House
347-349 Cheriton Rd, CT19 4BP
Tel: 01303 274574
folkestone@shmobility.co.uk
ALSO AT BIRCHINGTON
www.safehandsmobility.co.uk



Some grateful pupils from Lyminge Primary School receiving their new Literacy Shed from the Chair, Nancy Benham, of The Lyminge Association who funded the purchase

HEAVER & LINCH

Bespoke Handmade Kitchens & Furniture

Bespoke Handmade Cabinet Makers based in Lyminge, covering Kent and the South East. Over 30 years experience in creating stunning solid wood kitchens and furniture.

Get in touch for any advice, recommendations and a free quote.

Tel: 07832 360 603 or 07832 363 963
Email: heaverlinch@outlook.com
Website: www.heaverandlinch.co.uk



Editor: pbarnes20@icloud.com

the fifth trust
supporting adults with learning disabilities

Fifth Trust Update
www.fifthtrust.co.uk

Thanks to all those who supported our Christmas craft fair, which took an amazing £11,500.

Following the Trust being made a finalist at the Kent Charity awards in September, our new skills centre in Barham was named 'Construction Project of the Year' at Kent Invicta Chamber awards; congratulations to project leader b&m, architects HMY and construction company Breem.

Remember to order your logs, or pick up nets, from the Valley Vineyard Garden Centre – call 01227 831052.
Happy New Year to all!

Coach & Horses



CHECK OPENING HOURS
For bookings and any help needed, please phone 01303 901011 or check Facebook page 'Coach & Horses'



Reduce utility costs - spend time in our Meet up, Warm up hub

MeetUp WarmUp



- A warm & welcoming environment
- Energy saving tips/Information
- Free phone charging points
- Free WiFi
- Free Flask (Limited availability)
- Fill up your own flask with hot water (save boiling your kettle)
- Free energy efficiency light bulbs

- Free hot water bottle (Limited availability)
- Tea and coffee available to purchase
- Light snacks available to purchase (including hot soup and bread & butter £1.00)
- Two course hot lunch £7.50



- Tea time snack pack to take home £3.50 (Sandwich, crisps and cake)
- Opportunity to join in many chargeable activities, meet others and stay warm



Age UK Hythe and Lyminge – Sanford House, Stade Street, Hythe, Kent, CT21 6BD
Open Monday – Friday 9.30am – 3.30pm
Saturday 10.30am – 1.30pm
Sunday 10.30am – 1.30pm

Age UK Lyminge – Station Road, Lyminge, Kent, CT18 8HQ
Open Monday – Friday 9.30am – 3pm
Age UK Ashford – Stanhope Road, Ashford, Kent, CT21 6BD
Open Monday – Friday 9.30am – 3.00pm

Registered charity number 1125274. Company number 6589817. © Age UK Hythe and Lyminge 2022
Registered charity number 1152993. Company number 6248833. © Age UK Ashford 2022

Call 01303 269602 for more information



Singing for All



EVERYONE WELCOME

£3 per person

Lower stress, boost immunity and lung function, enhance memory and improve mental health.

Age UK Lyminge, Station Road
11am- 12pm

Wednesday 11th January

Wednesday 8th February

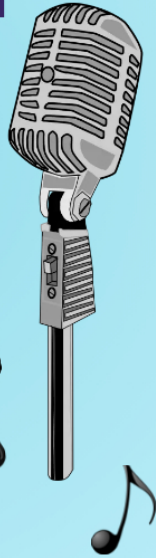
Wednesday 8th March

Wednesday 12th April

Wednesday 10th May

Wednesday 14th June

Wednesday 23rd November



For more detail call 01303 269602

Made with PosterMyWall.com



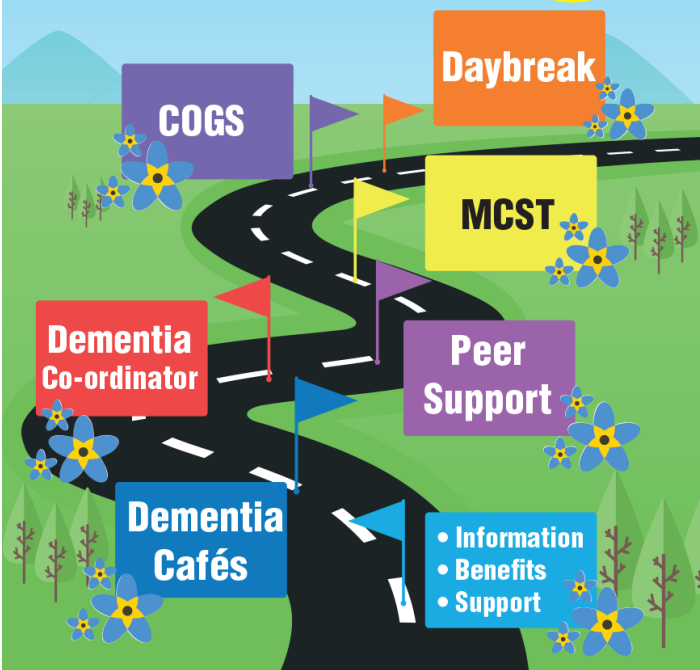
AGE UK - LYMINGE

Are you concerned about your memory?

Are you living with Dementia?

We can help guide you along your journey

Dementia & Me



Services and activities available.

Information and Advice is available to those by telephone, centre-based visits and home visits. We have a team of expert Information and Advice Officers who can help to maximise income by completing benefit checks to ensure individuals are receiving all they are entitled to. Our team are there to support individuals complete forms, using the right terminology for a more positive outcome. This service is free and available by appointment or drop into one of our many Dementia Cafés.

The **Dementia Co-ordination** team will work with and support those affected by dementia, including family and carers. The Dementia Co-ordinators will be there to help from pre-diagnosis, to support people to get a diagnosis, to access support services and provide the guidance they need to live as independently as possible within their communities. Free and available by appointment.

Dementia Cafés offer a safe place to socialise, meet others, ask questions and learn more about dementia and local services, whilst enjoying a hot drink and a slice of cake. Free, groups held at various locations throughout the month.

MCST (Maintenance cognitive stimulation therapy) is a 12 week programme that meet weekly for 1 hour 30 minutes for people living with mild dementia. Group members take part in meaningful and stimulating activities, proven to help maintain memory and mental functioning. The group provide a fun, supportive environment where people can build new friendships. £60 Mondays or Thursdays (moving to Friday from January) 10.30am -12noon.

COGS (Cognitive Stimulation Therapy) is a weekly 4 hour programme for people living with moderate dementia. COGS is a small group intervention for people who are experiencing difficulties with their memory. It works by providing ideas for people to help themselves maintain their cognitive abilities, including group discussions and activities. A 12 week programme, £20.00 per week on Tuesdays 10.30am – 2.30pm, (Thursday starting in January).

Daybreak services offer activity-based day care in a safe and secure environment for people living with moderate to late-stage dementia who need a little more support or have additional needs. As well as providing a meaningful day for participants, it can provide a day of respite for family or carers. Monday – Friday 9.30am – 3pm £35.35.

Services delivered at our bespoke unit at **Age UK Lyminge**, Station Road, Lyminge, CT18 8HQ. Transport is available on request.

For more information or to speak to one of the team call: **01303 269602**, dementiadaybreak@ageukhl.org.uk
call: Carlene Ryan, Dementia Organiser
07379 646426, demo@ageukhl.org.uk



Registered charity number 1125274. Company number 6589817. © Age UK Hythe and Lyminge 2022

New PILATES class!

Starting on
12th January

THURSDAYS 17:00

Rhodes Minnis Village Hall



Spaces are limited. **Please book in advance.**

The class suitable for any level of ability, from complete beginner to intermediate.

For more information:

lucianaclarke.pilates@gmail.com

07944028445

www.lucianaclarkepilates.com

Thank you Lyminge

Our parents, Jean and Peter Lissenden moved to Mayfield Road in Lyminge from Devon in October 1998 in order to be nearer their grandchildren. They really enjoyed living in the village and joined the Garden Society and Lyminge Friends. Peter passed away in 2013 and Jean on 9th September 2022.

We just wanted to say a big 'thank you' to all the people in the village who knew them and made their lives so happy, especially the ones who stopped for a chat when Mum was working in the garden, she really appreciated this. Also a massive 'thank you' to everyone at the New Lyminge surgery especially Dr. Powell and Sister Sarah together with all the other NHS resources that gave us so much support in helping Mum, especially in the last few weeks.

Like Dad, Mum had hoped to donate her body to Medical Research but this was not possible in her case so we had a small family service. Our plan is to hold a Celebration of her Life in Lyminge Village Hall on Saturday 8th April 2023 and people who knew her will be very welcome to join us. If you would like to be invited please contact Diane at dmpotter@tiscali.co.uk

Thank you all, from Jean and Peter's children

ETCHINGHILL RESIDENTS' ASSOCIATION

Film Night

'Death on The Nile (2022)'¹²

Monday 16th January 2023

Etchinghill Village Hall - 7 for 7.30pm

Entrance Fee £6pp

Open to new and existing members
Free Refreshments and Raffle



www.etchinghill.info

Rhodes Minnis Circle

Our Christmas Party unfortunately had to be cancelled because of icy weather.

There is no meeting in January but we hope to meet up as usual in February

The Committee wishes all our members and friends a Happy and Healthy New Year.

Marion 862913

Editor: pbarnes20@icloud.com



LYMINGE HISTORICAL SOCIETY



**HAPPY
NEWYEAR**

We are taking our usual Winter Break in January and February.

Our next talk is on Tuesday 7th March, 7.30pm in the Tayne Centre

**'Lyminge in the Swing Riots, 1830'
with Derek Boughton**

!!Lyminge a History Part 12 now available!!

This can be purchased at the Library, Lyminge Food and Wine or direct from Daphne on the number below. You can also purchase it at the monthly Lyminge Historical Society talks. N.B. We now have a card reader for purchase of books and payment of Membership Fees.

All Lyminge a history publications, can be purchased individually through the Lyminge Village Store, Lyminge Library or on-line via our website using PayPal.

Plus: purchase Parts 1-5 as a bundle for £22 or Parts 1-10 for £50* To take advantage of the offer please call Daphne Andrews on 01303 862865. NB This bundle offer is not available from The Library or Lyminge Food and Wine.

*Postage and packaging extra

Email: lymingehistoricalsociety@gmail.com

Website: www.lymingehistoricalsociety.co.uk

Facebook: www.facebook.com/Lymingehistoricalsociety

The Lyminge Association's Father Christmas Delivery Service

This service started 40 years ago this year and, apart from the Covid year, Father Christmas has come along to help the Association every year since then. We have reached the stage where people who received presents from Father Christmas when they were small are now asking Father Christmas to deliver presents to their children! It is another one of those things that makes our village so special.

But can it continue? For various reasons, three of the people who helped run the Delivery Service this year will not be able to assist next year. The Association really does need some new, younger folk to come along and help with the running of the Association.

We all love having a village where so much is going on, but do we take it for granted that there will always be someone else to do the organising?

Why not give a Christmas present to the Lyminge Association of a little of your time each month to help the village . . . ?

Please contact Nancy Benham for a chat on 07840 796383 or nancybenham@aol.com



Is your New Year's resolution...

- To help save our planet from the effects of climate change?
- To help our local community bond and cope with the cost of living crisis?

If either is the case then look no further...

Lyminge Village Hall Committee are looking for local heroes to help us with several specific roles/projects. You would not have to become a permanent Trustee or committee member. Although, if this is an idea you have toyed with, it would be an ideal opportunity to meet the committee and see what we do on a week to week basis. Could you help us for these specific projects? To ask any questions/find out more email Kate/Gerry at admin@lymingevillagehall.org.uk



Solar Panel Champion

We would like to get solar panels on our roof. By installing solar panels to generate our own renewable energy we hope to save money on energy bills and protect all our users from future energy price increases. We believe that the time is right for this project following on from the extensive refurbishments inside the Hall in summer 2022. The role could involve collating quotes, applying for funding grants and ultimately overseeing the installation depending on your time available. Is halting the climate crisis one solar panel at a time your mission? Drop us a line...

Warm Hub Champion

Our questionnaire feedback in 2022 indicated that villagers are really looking for community events at the Hall in which they can participate. With the cost of living crisis we are really aware of the need for warm hubs and places where our community can get together in an accessible and affordable way. We have generated ideas for coffee mornings, family/seniors bingo sessions, quiz nights, concerts and bring and buy sales but we need a champion to take one or two of these forward by identifying suitable dates and organising and promoting them. Are these things you'd like to come to or see happen at the Village Hall? Send us an email... admin@lymingevillagehall.org.uk

Business Plan Writer

One of the first things asked for on grant forms or charity bids is a business plan. Unfortunately none of us have done that before and we would really appreciate help from anyone who is familiar with writing a business plan or writing bids. If you can help us please get in touch admin@lymingevillagehall.org.uk

LYMINGE VILLAGE HALL presents.....

the inaugural concert of Lyminge and East Kent's newest band.....

shed those winter blues while
having a fun evening with family
and friends raising money for the
village hall!



Friday 27th January 2023 @ 7:30pm
£5 a head or £50 a table of 10-12
tickets from gerry@dacruz.eu

Lyminge Friends - January 2023

In December, the Christmas Party was great fun with lots of lovely food for lunch, a good Raffle and Santa and his Elf helping with the Secret Santa. Thanks to all the cooks and helpers, and everyone who contributed towards it. Really couldn't do it without you! On 31st December we have our New Year's Eve Lunch in China China at 12noon.

HAPPY NEW YEAR EVERYONE

Wednesday 4th January 2023 at 10.30am in the Methodist Church. John Buss will take us back to 'The 1960s - The Decade that Rocked the Nation'.

On 11th January, lunch will be held at The Drum Inn at Stanford at 12.30pm. This must be prebooked with £10 deposit - call 862015 to book your place.

On 1st February our talk will be on 'Elizabeth Barton, The Maid of Kent 1506 - 1534' after which will be our 15th Anniversary Celebration. More details in January.

We are a friendly social group and welcome new members so just drop into a meeting, or if you'd like to talk to one of us first, please call 863500.

Please wear appropriate clothing and bring a blanket with you if you feel the cold.



The New Library Display

The theme is Christmas poems, and includes some contributions from the Lyminge poetry group, the Lyminge Laureates.

S Santa's is stuck down the chimney
E Eaten too many mince pies
A As he was supposed to be dieting
S Something's obviously gone awry
O Oh Santa, what can we do?
N Now he's wedged well and truly in the flue.....



AGM

ANNUAL GENERAL MEETING

Join us at 7.30pm
Tuesday 17th January 2023
at The Tayne Centre

Soft Drinks and Nibbles
provided



For more information about the Gardeners' Society email:
lymingegardeners@gmail.com
or call Anne on 07703 149008



LYMINGE PARISH COUNCIL

January 2023 Newsletter

Forthcoming Council and Committee Agendas are displayed on the Council notice boards on Tayne Field and the entrance to the Village Hall car park, Etchinghill. Agendas and minutes are published on the Council's website: www.lymingeparishcouncil.org.uk and Facebook page. We invite you to read the minutes online or on the noticeboards which may provide the information you are seeking regarding a particular item, but correspondence is always welcome from parishioners and can be sent to the Clerk at the addresses given at the bottom of this page.

HAPPY NEW YEAR!

We hope you had a lovely Christmas, perhaps one approaching "normal" this year, and would like to wish everyone a very Happy New Year!

In the last year we have been very busy, and in case you missed it here are some of the things that have happened across the Parish...

In June we collaborated with the Lyminge Association to celebrate the Queen's Jubilee, including planting trees across the Parish to commemorate the event.

We kicked off the Neighbourhood plan, and asked you for your questions, ideas and input, and this year we will be creating a plan as a community led framework for guiding the future development, regeneration and very importantly conservation of our villages, protecting our AONB and the natural environment.

Conservation work on the St Eadburgh Well house was also completed earlier this year, refurbishment of the phone boxes is underway to convert them to book swaps, and new noticeboards have been installed around the Parish, helping our community groups and clubs to keep everyone updated.

This year will see the formal handover of the play parks at Mount Pleasant Close, Lyminge and Meriden Walk, Etchinghill from FHDC to the Parish Council.

4 new Councillors have joined the team representing residents across Etchinghill, Lyminge and Rhodes Minnis; you can find out more about them and the rest of the Council on lymingeparishcouncil.org.uk

PLAYPARKS – The new playparks were finished in December and will open officially on Friday 6th January at 2.30pm on Tayne Field.

CAR PARKING

There is new car parking signage regarding parking regulations by the convenience store in Lyminge to keep both pedestrians and drivers safe.

POTHOLE BLITZ

KCC are investing money in fixing potholes; you can report them and other non-urgent issues including street light faults, drainage, overgrown vegetation etc. at <https://www.kent.gov.uk/roads-and-travel/report-a-problem>

PRECEPT – APR '23 - MAR '24

Each December, the Parish Council decides what funding will be needed in the following financial year; this is known as the Parish Precept. This is used firstly to manage the things for which we are responsible in law, secondly to maintain the assets that we look after on behalf of the parish, and thirdly to deliver improvements in facilities where needed. This is collected by Folkestone and Hythe District Council as a small proportion of Council Tax, which can be seen on your bill, and is used by the Parish Council specifically for the benefit of people in the Parish.

Within the Parish, there are many different interest groups with a wide range of activities which are supported by the Council, and each year groups can apply for funding for community projects. This way, we try to support as many different interest groups and parts of the community as possible and make the Parish a great place to live. So each year, we seek to undertake one or more capital

projects aimed at delivering improvements. This year (ending March '23), the major project we have undertaken is replacing and expanding the playparks on both Jubilee and Tayne Field in partnership with Lyminge Youth Action. They have raised a significant sum for the project over the last few years, with additional funding from the Parish Council.

Most years, much of the annual Precept is spent on maintaining existing facilities. The amount we spend on such things goes up each year through inflation. Next year, recurring maintenance will account for 54%, of the Precept. We will also use 29% to replenish the cash reserves used to pay for the completion of the new playparks. Reserves also allow us to deal with unexpected costs that may arise, so they are an important part of good financial management and need to be replenished. In the budget for 2023/24, we also need to make allocations towards the cost of the elections in May, and towards the work of preparing the Neighbourhood Plan that is currently underway. We have continued to allocate funds to cover small-scale environmental projects around the parish.

Pentland Homes have resubmitted their development plans for planning permission incorporating changes they wish to make to the scheme. When building commences, this will unlock a statutory levy quantified by the size of the development. Our budgeting for 2023/24 is taking this levy into account, although this is not certain until the development begins.

Currently, our plan is to use the levy to undertake projects that we planned to fund with the levy this year held over from 22/23:

The surface of the running track in Jubilee Field has now deteriorated badly. We plan to renew the surface to make it easier to maintain, and to create a much better all-weather facility.

The skate park in Jubilee Field also needs upgrading and we have allocated a substantial proportion of the levy to carry this work through.

Much of this work represents significant improvement of existing facilities that need upgrading that contribute significantly to the quality of life in the parish, and we are committed to ensuring that they continue to be available for residents.

The six-figure sum from the statutory levy on the Pentland development will help to fund much of this work, but not all. We will raise the balance of funding needed through the Precept for 2023/24. The increase for a Band D property will amount to 28.4p per week resulting in an extra sum of almost £20,000 to be ploughed back into the community next year through the projects outlined.

In recent years the benefits of social and physical activity outdoors has been widely recognised, and we believe that the planned projects will deliver substantial benefits for the Parish delivering our aims to make our community an attractive place to live. We will continue to work towards supporting the most effective projects to deliver benefits for the whole community.

Rob Baldwin, Chair, Finance and Administration Committee

JOIN US! – We meet monthly to discuss community matters – the public are always welcome to come to meetings - all times and dates are published on our website.

JANUARY MEETING DATES

Full Council Meeting – Monday 30th January 2023 at 7.30pm, Tayne Centre, Lyminge
Finance and Administration Committee – Monday 9th January 2023 at 7.30pm, Tayne Centre, Lyminge

Sarah Harrison, Clerk

Correspondence Address: Lyminge Parish Council, 18 The Sidings, Lyminge CT18 8HH
Telephone: 07999 403 948 Email: clerk@lymingeparishcouncil.org.uk
www.lymingeparishcouncil.org.uk
www.facebook.com



Thoughtful Food....



...is a group of local volunteers looking at our food, and how this impacts climate change. Our aims are to support people to produce more of their own food, and to shop locally, sourcing seasonal produce. We also run a community allotment in Lyminge and welcome new members.

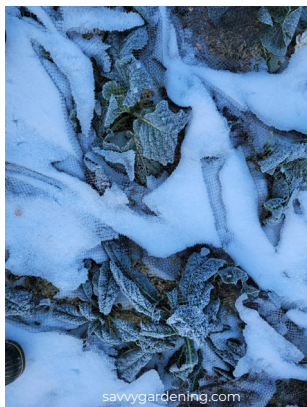
Contact: thoughtfulfoodgroup@gmail.com or on Facebook and Instagram @thoughtfulfoodgroup

Next **Thoughtful Food** meeting, **Tuesday 3 January 2023, 7.15pm** at The Coach and Horses. All welcome

Community allotments

We are very pleased to say that all of the mini-allotments have been allocated for next year. Plot holders will receive an email with the agreement for 2023 before Christmas.

We would like to welcome the previous plot holders, but we are especially happy the younger members of our community in the Cubs and Squirrels agreed to continue with their plots in 2023. If you are a plot holder and would like guidance on growing, don't forget to sign up for the new Gardener workshops in February, March and April.



Frozen veg?

"Psst!...did you know that there are certain vegetables that taste better AFTER a frost?" It's true! In cold conditions many starchy vegetables like parsnips, celeriac, and carrots, turn the starches in their cells into a botanical 'anti-freeze' to avoid cold damage. That anti-freeze is sucrose, also known as sugar!

Not only does this allow the plants to tolerate cold temperatures, but it also makes them taste better. In fact, I don't even start to harvest my late kale crop until it's been sweetened by a few frosts. Ditto from my celeriac, leeks, beets, carrots, and parsnips. At a recent farmers market, one of the farmers at my favourite stall told me that his kale had been 'frost cured' ... what a cool way to describe this frost response!

Anne Gould

Reminder Of Dates For Your New Diary

To help support new or inexperienced vegetable gardeners get started to 'grow your own'

- 'Get Ready to Grow' - Sunday 5th February 2023 14:00-17:00
- 'Seeds and Sowing' - Sunday 26th March 2023 14:00-17:00
- 'Potting and Planting' - Sunday 23rd April 2023 14:00-17:00

If you would like to attend this series of free-of-charge workshops, held in Lyminge, please book your place by emailing thoughtfulfoodgroup@gmail.com



What's in Season in January?

Beetroot, Brussel sprouts, Savoy and spring green cabbage, carrots, cauliflower, celeriac, celery, chicory.

Freshen up your salad bar

Make a coleslaw but try grating beetroot, celeriac or finely shredding sprouts into the mix. A grated sharp apple also works well for a fresh start to the year after all of that wonderful excess that we are now all regretting!

Top tip from Nancy

Buy a large piece of fresh ginger and pop it in the freezer. This can be grated straight from the freezer, no need to peel, easily giving masses of fresh ginger in seconds. A real game changer!



Very Best Wishes from Thoughtful Food



Keep Warmth In and Save Energy

We've compiled tips for you to try at home to keep the warmth where you need it, plus ways to use less energy and save money on your bills.

1. Keep furniture away from radiators – get the maximum benefit from your heating by not blocking them.
2. Use your thermostat – set your thermostat to the lowest comfortable temperature, which for most is between 18 to 21 degrees.
3. Keep the heat in – closing doors and using draught excluders reduces the amount of heating moving into colder areas of your home, such as the hall. If there's a gap at the bottom of the door block it with a draught excluder – you can make one stuffed with used plastic bags or bits of spare material.
4. Be careful with your washing – wash on a 30-degree cycle and try to reduce your usage by one run per week for a year. This can save around £34 a year.
5. Switch off standby – almost all electrical appliances can be turned off at the plug without upsetting their programming. This can save around £65 per year.
6. Spend less time in the shower – by keeping to a four minute shower time, this can save around £95 a year – for a free timer and other water saving devices visit www.savewatersavemoney.co.uk

For more information, tips and help understanding your energy bill head to www.energysavingtrust.org.uk

* Savings are based for a typical three-bedroom, gas-heated home and on the Energy Price Guarantee October 2022. Water savings are based on average occupancy.

Reduce Your Home Heat Loss

Most of the carbon dioxide emitted into the air is through heat loss from the roof, windows, walls and unwanted gaps. By tackling heat loss you can dramatically reduce your carbon footprint and energy bills. If you are looking for little yet simple fixes to insulate your home, we have some top tips:

1. Draught proofing – Draughts happen where there are unwanted gaps in the construction of your home, and where openings are left uncovered, you should block up any that let cold air in and warm air out.
2. Insulating your hot water pipes – Pipe insulation consists of a foam tube that covers the exposed pipes between your hot water cylinder and boiler, reducing the amount of heat lost and, therefore, keeping your water hotter for longer.
3. Bleed your radiators – Yearly bleeding of radiators will reduce potential cold spots throughout your home and make your radiators more effective.
4. Top-up your hot water cylinder insulation – Nearly all UK hot water cylinders have some insulation, however those with hot water tank jacket under 25mm thick could benefit from top- up insulation to an 80mm jacket.

Sophie's Knot-horn moth in Lyminge - a first for the UK!

A small moth has recently been reported for the first time in the UK, in Lyminge! Known primarily from the Mediterranean region, one individual was found in Lyminge amongst an influx of migrant moths into Kent during the remarkably warm weather of October 2022 half-term. The moth couldn't be found in any British moth identification books so a photo was sent to the Kent Moth Group and was identified by Dave Shenton as *Ancylosis convexella* - a little-known species without an English name. It has therefore been provisionally named as "Sophie's Knot-horn moth" in recognition of 6-year-old Lyminge resident Sophie King who helped find the moth in her garden. Well done Sophie!

More details on <https://kentmoths.org/species/ancylosis-convexella>



MUSIC ON A FRIDAY

Music On A Friday wishes to thank all the performers, helpers and particularly the supporters, who ventured out on a freezing evening, to listen to our music.

Thank you so much and we look forward to seeing you all at more concerts in 2023

In aid of LORD WHISKY SANCTUARY FUND (Charity No 283483)

Park House Animal Sanctuary Stelling Minnis CT4 6AN

Tel: 01303 862622 www.lordwhisky.co.uk

lord.whisky@btinternet.com

We would like to thank everyone for their good wishes and kind donations over the Christmas period and wish you all a Happy New Year.

Dates for your Diary

Boot & Spring Fayre ~ Saturday 29th April

Dog & Owners Fun Day ~ Saturday 10th June

Boot & Summer Fayre ~ Saturday 8th July

Boot & Late Summer Fayre ~ Saturday 5th August

Boot & Autumn Fayre ~ Saturday 9th September

Boot Fair & End of Year Sale ~ Saturday 7th October

All held at Park House Animal Sanctuary CT4 6AN

Letter to the Editor

Dear Editor,

On Sunday 18th December we visited the Parish Church to see the display of Nativity Scenes and I just had to write to say how impressed we were with the variety and number of scenes that were on show.



The atmosphere in the church was lovely with Christmas music playing in the background, mulled wine, tea, coffee and a wonderful selection of mince pies and cake on offer. We stayed much longer than we had planned! A beautiful event. Thank you to all those who shared their nativity scenes with us and to all those who organised such a thoughtful event.

Adrian and Sandra Willcox



Think you are over the hill? Try Pickleball - it provides exercise in a highly enjoyable way

We are a friendly non-competitive group, looking for new players of any age to join us. It's a simple sport, easy to learn and equipment is supplied. An inexpensive way to have fun all year round.

Etchinghill Village Hall

Tuesdays 2pm - 4pm.

Call 01303 862696 or 01303 862928

LYMINGE VILLAGE HALL presents.....

the inaugural concert of Lyminge and East Kent's newest band.....

shed those winter blues while having a fun evening with family and friends raising money for the village hall!



Friday 27th January 2023 @ 7:30pm
£5 a head or £50 a table of 10-12
Tickets from gerry@dacruz.eu

**Freshly Prepared
Breakfasts & Light Lunches
Home Baked Cakes
Vintage Afternoon Teas
Coffees
Teas**

**Takeaway Available
Private Functions**

Open Tuesday to Saturday
9am to 3pm
Dog Friendly

THE COFFEE CABIN TEA ROOM LTD.
CANTERBURY ROAD, LYMINGE, KENT.
CT18 8HU. 01303 864222
Instagram @thecoffeecabintearoomltd
Find us on Google Maps

POP ME ON THE FRIDGE

**MOBILE
FISH &
CHIPS**



**EVERY
THURSDAY**

**From
11.45am - 12.45pm**

**Age UK Car Park
Eat In Cafe
or Take Away**



STREETZ2STREETZ

TELEPHONE:

07955 926 835

Major Cards Accepted



SUBSECTOR
Become a digital business

Your small company is having to
do more with less

Becoming a digital business can
save you time and money

Escape tedious admin by
automating repetitive tasks



Find out more and book a free consultation at
subsector.co

Don't be led up
the garden path...

...choose an agent
that gives straight
forward, honest advice.



Call today for a free, no obligation valuation

Bridge Office - 01227 831999
bridge@colebrooksturrock.com
88 High Street, Bridge, CT4 5LB

Elham Office - 01303 840422
elham@colebrooksturrock.com
Bank Buildings, Elham, CT4 6TD

colebrooksturrock.com





Lyminge Baby and Toddler Group

Tuesdays 10am to 12pm
(term time only)

Tayne Centre, Church Road

Bring your little ones along to our friendly group for lots of fun including toys, crafts, playdough, ride ons and lots more.

£2.50 per family, including refreshments for all.



If you have any questions please contact Ellen on 07870 40567

Garden Safari 2023

Many people in the area have asked for a **Spring Garden Safari**. So next year it will take place on **20th and 21st May** as part of the **Coronation Lyminge Festival**.

We would love to see some new gardens, as well as the regulars, included in 2023.

If you have any questions regarding the Safari please give me a call:

Ray Smith 01303 863856



BADGERS BRIDGE NURSERY

" Bridging the indoor and outdoor learning environment for children in their Early Years"

Badgers Bridge is set in the idyllic countryside of Postling, just outside Lyminge. We are a small and friendly Preschool who blend the Montessori principles with the outdoor learning ethos.



We were awarded Outstanding by Ofsted in 2018 in every area. This is a real achievement and we are really proud of the staff who work tirelessly to provide a stimulating and caring environment for the children of Badgers Bridge.

The inspector was particularly impressed with our Forest School. *"Children enjoy limitless opportunities to explore, investigate and work together in the natural woodland environment. Staff skilfully inspire children to develop a significant understanding of the world in which they live".*

".....exemplary relationships between staff provide excellent role models for children and promote high standards of behaviour. Children make outstanding progress during their time at the nursery".

Exciting news! We have opened our new setting in Elham. We offer the same unique outdoor experiences for children from 20 months old. Come along and see us at The Gore!" So please call or email us:

Email : badgersbridge@gmail.co.uk

Website : www.badgersbridge.co.uk

Tel : 01303 862951

Postling Village Hall, The Street, Postling CT21 4EU

Ofsted Registered : 395128

Companies House Reg : OC375571

Based at Lyminge Village Hall

LYMINGE Pre-school

Every Day Adventures at our **OUTSTANDING** pre-school

COUNTRYSIDE SETTING
QUALIFIED &
LONGSTANDING TEAM
WRAP AROUND CARE
8-6PM DAILY

PARENT PORTAL
HOLIDAY CLUB
OUTSIDE OF TERM TIME
FANTASTIC FACILITIES
& GARDENS

Early Years Education & Day Care for Children Aged 2-5. Rated **OUTSTANDING** by OFSTED 2022.

WE'D LOVE TO HEAR FROM YOU

01303 863149 ✉ LYMINGEPRESCHOOL@GMAIL.COM

Editor: pbarnes20@icloud.com

Etchinghill Baby & Toddler GROUP

10.15-11.30am every Wednesday
at Etchinghill Village Hall
£2.50 per child

Come along to Etchinghill's Parent and Toddler group welcoming children from 0-3. We have plenty of toys and snacks for the little ones, and there is always tea coffee and cakes for the adults. For further information call Chrissy on 07811682045 or Ruth on 07817777975, look at Parent and Child Etchinghill Facebook page or email us as parentandchildetchinghill@gmail.com.





With our excellent local knowledge & experienced staff we will get you moving

✓ **Free** professional photography, property floorplan, Rightmove premium listing & social media advertising

01303 863393

The Estate Office,
8 Station Road,
Lyminge,
Kent CT18 8HP

Follow us on
social media



www.laingbennett.co.uk

The Lyminge Association

We're here to support and develop our community!!

Contacts:

Chair: Nancy Benham 01303 863076 or 07840796383
nancybenham@aol.com

Vice Chair: Peter Barnes 01303 863737 or 07808775302
pbarnes20@icloud.com

Treasurer: Martin Fry 01303 863177
martin@Rhodesminnis.org.uk

Committee Members: Adrian Willcox, Marian Chubb, Richard Chubb, Dave Hunt-Cooke, Gillian Heywood, Robin Macknochie, Derek Smith, Ray Smith, Penny Stephens

Newsletter: As for Peter Barnes above

ETCHINGHILL VILLAGE HALL HIRE FEES

The next time you are thinking of holding a function why not try Etchinghill Village Hall, which holds the highest Hallmark accreditation level (Hallmark 3), with its excellent facilities, including ample parking space.

The standard hire charge for the main hall and kitchen are:

ANY DAY OF THE WEEK' ANY TIME £12 PER HOUR

No winter supplements. No extra charges.

Ideal for family parties and get togethers.

The use of a separate Committee Room is also available. For all bookings or enquiries please contact:

The Duty Manager on 07514 758936



Large hall with stage, new kitchen and flexible hire

Excellent parking facilities, disabled access, proximity to playgrounds and playing fields. Beautiful countryside location.

Capacity:

200 people dancing / audience seating, 100 with tables
Small rooms available for up to 50 seated

Find out how we can help you with your next event:

BOOK ONLINE: lymingevillagehall.org.uk

EMAIL: admin@lymingevillagehall.org.uk

INFO: 07525 909185

Full pricing can be found on our website.

Guideline prices:

Main Hall hire: £88.40 (Fri / Sat evenings)

£47.60 (Sat / Sun morning or afternoon)

Find us on Facebook

Registered charity 28145

Rhodes Minnis Village Hall

Charity No.800345

Rhodes Minnis Village Hall is located 2kms (1¼miles) from Lyminge and just off Longage Hill and Whitehorse Lane in Chapel Lane.

The hall, which holds Hallmark accreditation, is ideal for children's parties, band practice, quizzes, meetings, wedding receptions, fundraising events and much more. It has a fully equipped kitchen.

Rates

Mon to Fri £18 per session £48 all day

Sat & Sun £23 per session

£33 for evening session and £69 all day

Sessions

AM session 08.30 - 12.30

PM session 13.30 - 17.30

Evening session 18.00 - 23.45

Separate rates for Bank Holidays and New Year and special rates for regular users.

For all bookings and enquiries please contact:

Mick & Dorothy Athow: 01303 862616

e-mail: booking-rmvh@outlook.com

TAYNE CENTRE

HALL HIRE

Previously known as the Lyminge Methodist Church Hall

Clayson Hall: £15 per hour

Rigden Room: £10 per hour

Wesley Room: £10 per hour

Church: £20 per hour

Enquiries:

Tel: 07716 521 405

Email: maryeblanch@outlook.com



Lyminge Library Opening Times

Monday 10am - 2pm

Tuesday 12noon - 5pm

Wednesday 10am - 2pm

Thursday 10am - 5pm

Friday 10am - 2pm

Saturday 9am - 1pm

Tel: 03000413131 lymingelibrary@kent.gov.uk

HYTHE AQUA SWIM SCHOOL

We have space available for Lengths/Improvers for Expanded Learn to Swim Scheme (Swim England LTS Level 4+)

Due to the expansion of our successful (nationally accredited) Swimschool at Hythe Aqua we currently have immediate vacancies for lengths and intermediate level swimmers

Club Secretary: 01303 862353

family.parris13@btinternet.com www.hytheaqua.org.uk

i bus times

for buses from Lyminge **The Sidings** to Folkestone town centre via Etchinghill & Cheriton High Street

MONDAYS TO SATURDAYS except Bank Holidays

There are route 17 buses at 0705 (not Saturdays), 0749, 0909, 0934 (not Saturdays), 1004, 1034, 1104, 1204, 1304, 1404, 1514, 1614, 1619 (schooldays only), 1654 (schooldays only), 1719, 1749, 1834, 1929, 2113 and 2313.

There are also route 18 buses to Sandling Station & Hythe - for times see our website or call the number below.

SUNDAYS & BANK HOLIDAYS

There are route 17 buses at 1032, 1302, 1532 and 1802.

for buses from Lyminge **Wesley Terrace** to Canterbury city centre via Elham, Barham & Bridge

MONDAYS TO SATURDAYS except Bank Holidays

There are route 17 buses at 0727 (schooldays only), 0732, 0752, 0903, 0938, 1028, 1128, 1235 (1228 on Saturdays), 1335, 1443, 1608 (1613 on Saturdays), 1703, 1803, 2001 and 2201.

There are also route 18 buses to Canterbury via Stelling Minnis and Bössingham - for times see our website or call the number below.

SUNDAYS & BANK HOLIDAYS

There are route 17 buses at 0903, 1133, 1403, and 1633.

These bus times will operate from 28 October 2018.



03456 00 22 99 @StagecoachSE
southeast.enquiries@stagecoachbus.com
stagecoachbus.com

On mobile • Online • On board

SNIPPERS & CLIPPERS UNISEX HAIR SALON

APPOINTMENT NOT ALWAYS NEEDED

WEDDINGS & SPECIAL OCCASIONS

SHELLAC NAILS

GENTS WELCOME

FREE WIFI

4 Station Road, Lyminge
Folkestone
Kent, CT18 8HP

01303 647 222

info@snippersandclippers.co.uk

Find us on
Google+

Find us on
facebook

Editor: pbarnes20@icloud.com

CIAT

Chartered Institute of Architectural Technologists

DAVID HAIME

ARCHITECTURAL TECHNOLOGIST
BUILDING TECHNICAL DESIGN
AND CONSTRUCTION DRAWING
SERVICES.
PROJECT MANAGEMENT

BUILDING PLANS FROM PORCH TO NEW BUILD.
PLANNING/BUILDING CONTROL/STRUCTURAL CALCS.
COVERING KENT/SUSSEX/SURREY.

LYMINGE, KENT CT18 8HA
TEL: +44 7974 156510
EMAIL: D.HAIME@BTINTERNET.COM

Kingdom CARPET CO.

- Carpets Supplied & Fitted
- Carpets Professionally Cleaned
- Carpets Whip Edged & Cotton Bound

Whatever your carpet need, give us a call for a **FREE** estimate / assessment.

Over 50 years combined experience.

07943 764 442

Email: kingdom.carpet.co@gmail.com

GEORGE MILLER BOILER & HEATING ENGINEERS

- Gas & Oil Boilers
- Central Heating
- Hot Water Systems

01303 901070

service@georgemiller.co.uk

248 Cheriton Road,
Folkestone, CT19 4DN



georgemiller.co.uk



Anna's Animal Physiotherapy

For dogs, cats & small pets

- Offering physiotherapy assessment and treatment of dogs, cats and small animals.
- I use a combination of manual therapy, laser, ultrasound therapy, TENS, kinesiology tape and exercises to rehabilitate your/their pet depending on the needs. I also address environmental and exercise factors that can help your pet with their condition.
- I now have a **NEW** treatment room where I can offer further assessment of your pet using a stance analyser. This identifies the mildest of lameness and addresses areas of compensation. I also offer home visits. Physiotherapy can help with arthritis and the ageing pet, post operative orthopaedic surgery, neurological, spinal conditions and many more conditions.
- I am fully insured with over 15 yrs experience working with animals. I am a member of the International Association of Animal Therapists (IAAT).
- For more information please visit my website:
annasanimalphysio.co.uk or feel free to contact me on
07944 606453 or anna@annasanimalphysio.co.uk

Anna Lindley (RVN, Dip.A.Physio)



Snippers and Clippers Barbers - Lyminge

Please call Richard for availability
(appointment necessary) on 07522 494969
Thank you for your continued support

4 Station Road, Lyminge CT18 8HP

Follow us on facebook for offers

Andy Mannering Flooring

SPECIALISING IN AMTICO AND
KARNDEAN LUXURY VINYL TILES



- Also safety flooring, rubber flooring, etc.
- Commercial and domestic work undertaken
- No job too small
- Free estimates and advice given
- Over 35 years experience
- Fully insured

Telephone: 0797 434 7248 or 01303 863095

Email: info@andymanneringflooring.com

Please visit my website for further information and feedback
www.andymanneringflooring.com



DILTON MINI SKIP HIRE

Ballast, Hardcore, Sand
and Topsoil Supplied
REGISTERED WASTE CARRIER

01303 812448 or 07799 433754

Red Dragon I.T. Ltd.



- Windows, Mac & Linux Systems
- PC Health Checks
- Wired & Wireless Networks
- Website Design
- Graphic Design

T: 01303 723456 | E: info@rdit.co.uk | www.rdit.co.uk
The Old Granary, Hanover Mill, Church Rd, Mersham, TN25 6NU

Rhodes Minnis Cat Sanctuary



REHOMING & BOARDING CATTERY

- Our Sanctuary takes in and rehomes 250 unwanted cats and kittens each year. A variety of cats are always available to suitable homes.
- 5* Boarding Cattery under 2018 regulations
- We are open to visitors every day from 10-1 & 2-4. No appointment necessary.

T: 01303 862 243
E: rminniscats@gmail.com
Facebook: @rhodesminniscats
www.rhodesminnis.co.uk

Seathwaite, Green Lane, Rhodes Minnis, Kent. CT4 6XU
Reg. Charity No. 262245



'Helping you enjoy your garden'

CRT Gardening

All general garden work undertaken including: garden design, hard and soft landscaping, new fencing installation and repairs, decking installation, hedge trimming and cutting, fruit and vegetable garden work, small to medium tree work. For a free quotation call either Karl Dodd 07967 442518 Katie Dodd 07966 301978 or email karl.dodd@live.co.uk katie.dodd@live.co.uk

Fully Insured



Hawkinge

Veterinary Surgery

Independently owned veterinary surgery for all types of small animals.
Opening hours: Monday to Friday 08:00-19:00 Saturday 08:30-13:00
24hour emergency service

TEL: 01303 764190

Hawkinge Veterinary Surgery, 9b Defiant Close, Hawkinge CT18 7SU
www.hawkingevetsurgery.co.uk



ROBERT KENT Cert. fp
FUNERAL DIRECTOR

Direct Cremation

£999

Fair Priced Cremation

£1950

ONE FIXED PRICE INCLUDING ALL CREMATION FEES

01303 684062

RKFUNERALS.COM

SCRUBBERS - Est. 1988

THE HOME AND COMMERCIAL CLEANERS

One off, regular or moving day 'Blitz'

Oven cleaning - Ironing

Carpet cleaning and more...

For a friendly and reliable service

Free Estimates

Tel: 01303 249288 or 07834 128671

Computer support & repairs by local people

Customer service is our priority

- *Remote IT support for business or home
- *New & refurbished sales
- *Call-outs for business or domestic users
- *Preventative maintenance & upgrades
- *Repairs to most phones, tablets & devices

enquiries@thecomputerpeopleltd.co.uk



Church Approach,
New Romney,
TN28 8AS
01797 363385



Acrise Electrical Services Limited

Design - Install - Maintain

Tel: 01303 656007 Mob: 07803 421240

Email: info@acrise-electrical.co.uk

Website: acrise-electrical.co.uk

Domestic, commercial, industrial & agricultural electricians serving the Elham Valley and surroundings.

Tressenden Designs

A seamstress and costume maker with 8 years of experience.

- ♦ Clothing alterations ♦ Repair work undertaken ♦ Made-to-measure; create a bespoke piece for those special occasions
- ♦ Modern and vintage designs ♦ Costumes, ball gowns and wedding dresses

For more information or a quote please contact Amy on: Mobile: 07853 202304 Email: amy.louise.ford@hotmail.co.uk





**APX PROJECT
MANAGEMENT**

From design to build, we use trusted quality trade professionals along with reliable suppliers to ensure budgets are met, with high standards maintained. If you're looking to -

- Extend your property
- Carry out an external or internal refurbishment
- Convert an existing building into a new dwelling

Please contact: paul@apxprojectmanagement.co.uk 07487 364155



**Dennis Huntley
Chimney Sweep**



Wood burners and multifuel stoves installed
Hearths and fireplaces built & installed
Over 40 years' experience

01303 862 343 • 07850 784 365

dennis.huntley@talktalk.net www.dennishuntley.co.uk



Auto Economy Centre

Fully equipped Mechanical Repair & Service Centre

With the latest diagnostic equipment

Half price MOTs when booked with any service

01303 863656

Orchard Garage, Canterbury Rd, Etchinghill

www.autoeconomycentre.com

AIR LINK CARS

(You pack up, we pick up)

Airport, Seaport & Long Distance Travel Specialists.

The Family Run Business where service really counts

Estate cars and People Carriers



Fixed price 24hrs a day. No extras.

Written Confirmation of booking.

For the Easy Airport Link, Think AIR LINK!

01303 670370 - 07766 824 474

airlinkcars@yahoo.com



FENCING | GATES | PAVING | RESIN BONDING
• Over 35 years experience • Jacksons Approved Installer
• Marshalls approved • Check-a-trade registered

Call Martin Gosbee: 07974 835 511 | 01303 863 337

GOSBEECONSTRUCTION@GMAIL.COM
GOSBEE.CO.UK



Sunhouse Electrical

Your local reliable Electrician

Part P Registered & Elecsa Approved

On Electrical Safety Register & Fully Insured

For a free quotation call James on

01303 766333

www.sunhouse-electrical.com



KW CONSTRUCTION
PLASTERING & RENDERING SPECIALIST

ALL GENERAL BUILDING INCLUDING:
ROOFING, BRICKWORK, TILING, PATIOS,
LANDSCAPING, SCREEDING, GROUNDWORK,
DRAINAGE, EXTENSIONS, RENOVATIONS,
REPAIRS & MAINTENANCE.

30 YEARS EXPERIENCE, COMPETITIVE RATES,
A FULLY INSURED, PROMPT & RELIABLE
HIGH QUALITY LOCAL BUILDER

KENNY 07743488361



www.Facebook.com/sjwoodhandyman
www.Instagram.com/sjw.handymanservices
07796 384857

LYMINGE FOOD & WINE

01303 862225



Our new opening times are:

Mon – Sat **7:00-20:00**

Sunday & Bank Holidays

8:00 - 19:00

PayPoint

POST
OFFICE



We offer National Lottery, ATM terminal,
Post Office & PayPoint services.



AK Healthcare

Tel: 07904311554 /
07980897382

www.akhealthcare.org.uk

We help patients suffering from a wide variety of conditions including arthritic pain, circulatory problems, frozen shoulder, back pain, sciatica and much more.

Please visit our website or give us a call for more information.

AK Healthcare,

Garden Suite,

4 Station Road, Lylinge

Park House Sanctuary Boarding Kennels & Cattery

Park House, Stelling Minnis CT4 6AN

Brick-Built Heated Kennels. Daily Walks ~ Reasonable Rates

Dogs must be fully inoculated. Heated Cat Chalets

Quiet Area Inspection Invited.

To book or for further information, call 01303 862622

or email lord.whisky@btinternet.com

www.lordwhisky.co.uk

South East Aerial & Satellite Solutions

Digital – Freeview – Satellite – Aerials

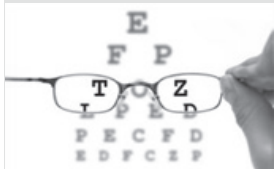
Supply and fit of quality digital installations, FREEVIEW, SKY, aerials, poor reception and problem solving, upgrades and repairs by fully accredited engineers

Free quotations and advice, fixed prices, fully insured

Freeview

NO CALL-OUT CHARGE

07825 168010 - 01303 862361



HOME VISITING OPTOMETRIST - providing professional eye care in your home

If you are over 60 years of age and no longer able to get out on your own, then you are eligible for a NHS sight test in your own home. Please call to arrange an appointment:

Elaine Edwards BSc(Hons)MCOptom 01303 840541

Registered with the General Optical Council (01-15421) Member of the College of Optometrists Member of the Association of Optometrists

D.M.B. Plastering

All aspects undertaken
*Interior. Exterior. Plastering. Rendering.
Coving. Ceilings. Wall. Floors
Finest quality assured. CSCS Certified.*
30 years experience.

Free estimates. Reliable service. Fully insured.
Call **David** on **07818 607209**



Forest Lodge
Counselling & Therapy

Need to talk?

Confidential and compassionate
qualified counsellor here to listen.
Please call or text Natasha on 07593 794321
All messages replied to
Email: forestlodgetherapy@gmail.com
www.forestlodgethecounselling.com



FILEHURST ASSOCIATES

YOUR COMPLETE REMOVALS AND STORAGE SOLUTION

☎ **01303 239990** ✉ **info@filehurst.co.uk**

Domestic & Business Removals - UK wide & France
Business Document Storage

Call Nick for a no-obligation quote.

B.M. Plumbing & Maintenance Services

Local Lyminge Tradesman

Plumbing and heating works. Complete bathroom
install including tiling. General building maintenance
undertaken. No job too big. No job too small.

Cheaper rates for senior citizens



07890854128 **Benmillsplumbing@hotmail.co.uk**

KJB GARDEN SERVICES

Weeding, Pruning, Mowing, Hedge
Cutting & General Maintenance
01303 862181 or **07704 989 402**
Over 35 years experience

JON DAUGHTERS - Local Builder

All aspects of general building works undertaken including:
roofing, kitchens, bathrooms and small extensions

Trading for over 30 years

Free quotes, no obligations, fully insured

Telephone: 01303 863371

Email: daughters777@hotmail.co.uk

House Clearance covering South East Kent.....and beyond!

CAROL CREES CLEARANCES



- Est. over 30 years
Full/part house clearance
Fair prices paid
Antique/Vintage/Retro/Modern
Registered rubbish carrier

Contact **Simon Cullen** on **07745 421680** or **sijnzo@aol.com**



www.eastkentfootcare.co.uk

07745 532075

**Podiatry, Chiropody,
Foot Health**

Treating and managing foot
and nail conditions, corns,
callus, insoles, ingrown nails,
diabetic foot care



Total garden care for all your needs

TIM MILLETT

Grass Maintenance, General Gardening, Small & Medium
Size Tree Work, Stump Grinding and Wood chipping
Fencing Repairs & New Installations
Turving, Hard & Soft Landscaping

Free Estimates - Fully Insured

01303 863676 **07752 880583**

Email: **info@tmhorticulture.co.uk**

N.P.C.

Domestic Appliance Services

*Service and repair of washing machines, tumble driers,
dishwashers, cleaners and small electrical work.
For a prompt and friendly service*

Call Neil Collard 01303 892234 or 07798716044
or Google me on Yell.com



Your Local Electrician For all your electrical needs

- 18th Edition/Part P Registered
 - Insured & all work guaranteed
 - All electrical work carried out including EV charging points
 - Covering Lyminge, Etchingill & surrounding villages
- Call for a free, no obligation quote and to discuss your
electrical requirements.



07878 457018

01303 814372

info@hughes-electrical.co.uk **www.hughes-electrical.co.uk**

To advertise in this space, please contact

Peter Barnes

pbarnes20@icloud.com **01303863737** **07808775302**



T.M. GRIGGS

01303 489795 07854 098395
tobystreesurgery@gmail.com



**Garden Clearance - Turfing - Hedge Cutting
Tree Work - Stump Grinding - Fence Repair**

DYNO-ROD



We've been
unblocking
sinks, drains
& toilets
in Kent
since 1965

- Quick Response
- CCTV Drain Inspections
- Drainage Repairs
- Pre-purchase Surveys

For a FREE no obligation quote
contact Mark or Peter on:

**01233 621108
07557 616630**

FRESHLOOK GARDENS

Regular lawn mowing service. Garden design. Hard and soft landscaping. General garden work, fencing and decking. Turfing hedge cutting, small and medium tree work. Water features, ponds and patios.

For free quotation ring **Danny Scott**
01303 242140 or **07795510093**
mrdanscott89@gmail.com

Established since 1990. Fully insured.

THE HANDY FELLOW



**A TRUSTED LOCAL SERVICE
CALL 07534485049**

Computer Repairs

01303 241325
07968 129902

PCs, MACs, Laptops, Tablets & printers,
Upgrades & Repairs, Internet & Email, virus removal,
Office Setup, Backup & Recovery & much more ...
Tuition available by a qualified tutor.

Usual Fee **£55**

Web sites built & hosted from £10 per month

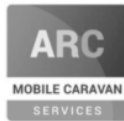
See www.computers-in-lyminge.co.uk for details



Alan Croucher Caravan Engineer

07921 480919 - 01303 863194
Caravans & Motorhomes "WE COME TO YOU"
www.arcmobilecaravanservices.com

"Your manufacturer's warranty is safe in our hands"



Local Tradesman

J Tappenden

Established over 40 years ago

Painter/Decorator

**01303 862467
077755 78008**



A. J. Athow

**BUILDER & DECORATOR
GENERAL MAINTENANCE**

Telephone: 01303 862616

Mobile: 07541 792238

Email: tony@athow.co.uk

Jackson Plumbing Property Maintenance

Complete bathrooms and tiling
No job too small. Special rates for OAP's.

**Telephone: home/evening 01303 270691
or daytime 07773 089398 or 07864 929826**

Trevor Law Electrical Installations

Serving Elham Valley for 30 years
Part P Registered

07850 970087



Ralph Allard Chimney Sweep



All chimneys, boilers and stoves swept.
Brush and Vacuum. Certificates issued.
HETAS and NACS registered, fully insured.

Member of National Association of Chimney Sweeps

01303 844465 or 07813716654



JBS BUILDERS

Specialising in Driveways, Brickwork, Patios, Fencing, Landscape Gardening. Tree work undertaken (lopping, felling and clearing).

General household repairs, painting, plastering, power jetting & cleaning.

No job too small!!! All work guaranteed and insured.

For free advice and quotations please call: 07825 168010/ 01303862361 (anytime)



Financial Planning

David Gridley - Chartered Financial Planner

Range of quality advice from a fully qualified adviser:

- Pre- and Post-Retirement Planning
- Investment Planning
- Inheritance Tax Planning

For further information, please contact our Lyminge office

David Gridley FPFS

Tel: 01303 863959 Email: davidgridley@sjpp.co.uk

MWH

Window and gutter cleaning service

Mark Haley



Lyminge and surrounding areas

For a free no obligation quote, please contact me

Mobile: 07738 479202

Home: 01303 863 702 Email: haleymark161@gmail.com

Find us also on Facebook

Ashman Consulting Ltd



Straightforward I.T.

**Advice
Training
Solutions
Support**

**Steve Ashman
07702641981**

info@ashman-consulting.co.uk

T. Metcalfe Fencing Contractors

Approved Expert Installer for Jacksons Fencing
Established over 30 years
Fully insured - Highly experienced teams



Panel fencing, gates, decking, pergolas, post & rail,
stock fencing, security, landscaping & tree surgery.

01303 840201 07790 290 155

metcalfefencing@btinternet.com

Proprietor - Derek Burr,
Ash Ridge House, Elham



Fincham Plumbing & Heating

Gas Safe, CIPHE, WIAPS registered

Qualified Plumber / Gas Engineer with over 30 years experience

Rosemary and Martin Fincham

07835 851 706 martinfincham@sky.com

Specialising in complete bathroom remodelling, including all tiling & pipework
Natural gas boiler servicing, Installation, Maintenance, Repairs, Replacement
All your plumbing requirements



**Lou Lloyd
Carpenter**

**loulloyd@rocketmail.com
07984 426214**

**Kitchens, Flooring, Wardrobes,
Doors, Decking and more!**

**HAND MADE CURTAINS,
ROMAN BLINDS & SOFT
FURNISHING**

CURTAIN ALTERATIONS

TEL: VALERY WREN 01303 237755



D & S DOUBLE GLAZING SERVICES

01303 863689 - 07912317915

We are a local company that specialise in double glazing repairs offering a wide range of service's that include: Replacement double glazed units - Locks - Hinges - Handles - Rubber Seals - Gaskets.

For a free estimate please call: 07912317915 or 01303 863689
or email: dsdoubleglazingservices@gmail.com



CEDAR TREE CARE City & Guilds

All types of tree work undertaken NPTC

Crown lifting, crown reductions,
dismantling and removals, hedge maintenance,
pollarding, stump grinding and removal, mobile saw milling,
wood land maintenance, all year round seasoned logs available
Fully insured and NPTC qualified with over 15 years experience
Call Tom: 07769 908027 email:linchlot5@gmail.com

**SPEARPOINT
TREE SERVICES**

All Aspects of Tree
Work Undertaken
NPTC Qualified
Fully Insured
Please call **Shane** for
a Free Quote
07963 203564 or
01303 621992



Sarah de Rougemont

Craftsman/Co-ordinator

UPHOLSTERY

All commissions considered
01227 455841 or 07973 377817



FULLY INSURED

Elham Dog Training Club

Dog training and Pet care services

- Puppies from 12 weeks old
- Kennel Club Good Citizen Dog Scheme Puppy through to Gold
- 1-2-1 home-based puppy training also available
- Other pet care, dog walking and day cover available
- Other fun classes available - ask for details

Lyn Fagg 07866 234820

Email: Elhamdtc@gmail.com



FULLY INSURED

Out & About.

Do you have any photos of local events or groups in action? If so can you please forward them along with a few words to pbarnes20@icloud.com

Etchinghill at Christmas



Christmas Jumpers I



Carols accompanied by Shepway Brass Band



The Big Fat Quiz



Celebrating Christmas with Luciana and the Pilates Group



Christmas Jumpers II



The 11th Annual Christmas Pétanque Competition place with the CLOSE eventually winning 13-5, 10-13, 10-13.



LYMINGE THEN AND NOW

This is the second of a regular feature provided by the Lyminge Historical Society in which we hope to learn a little more about our historic community. Pairs of photographs will show how some well-known local views have changed, or perhaps how they have not changed very much, over the past 100 years or so.



The views above show Well Field looking towards the Parish Church. Well House, Church Cottages and Well Cottages are all still there, but the farm, which occupied this area up to the early years of the 20th Century is long gone. The well house over St Eadburg's Well (to the right of the picture) was the public water source for this part of the village until mains water arrived in 1905.

Despite the threatening weather, an enthusiastic crowd turned up for the Switching on of the Christmas Lights by Father Christmas, during which carols were sung by The Lyminge Primary School choir



Celebrating Christmas with Lyminge Book Club



1st Lyminge Brownies had an adventurous outing to Dover Click & Climb barnowlyminge@btinternet.com