



THE LYMINGE NEWSLETTER

For the communities of LYMINGE, ETCHINGHILL, RHODES MINNIS and POSTLING

December 2022

Produced by
THE LYMINGE ASSOCIATION
www.lyminge.org.uk

From The Lyminge Association

THE LYMINGE
wishes



ASSOCIATION
everyone



A
MERRY
CHRISTMAS

& HAPPY NEW YEAR

As in previous years, The Lyminge Association is happy to confirm that Santa and his willing elves will be personally delivering Christmas presents to the children in their homes on the evening of Monday 19th December. See P7 for further details.

Presents may be left at The Methodist Church, Church Road, Lyminge CT18 8JA on either Saturday 10th or Saturday 17th December between 10am and 4pm only. Sorry - no other dates or times!! A receipt will be given for each bag of presents that are deposited.

The parcels need to be well wrapped and CLEARLY LABELLED WITH THE RECIPIENT'S NAME AND ADDRESS including POSTCODE.

A small charge of £2 is made per address; there is no limit to the number of presents per household, but they all need to be clearly marked with the recipient's name and address.

Designed by BiZkettE1 / Freepik

Because of the holiday period, the January edition of the newsletter will be delayed until early January 2023

Editor: pbarnes20@icloud.com

1

Tel: 01303 863737

Margaret Saunders' Meanderings

As the light began to fade after a day of torrential rain, the sky seemed to miraculously clear, with the almost full moon rising steadily above the hills accompanied by its evening star to the south. This was enough to tempt me out so I set off in appropriate clothing in case it changed back as suddenly as the rain had disappeared.

I had a clear view of the hills to the east with the moon's 'face' visible, with only two more days until the



full moon – the Beaver Moon. Walking down Woodland Road towards the Village Hall under dripping trees, I decided to look at the pond to see what effect the recent rain had made. It was full, with the backup pond full too. But to my surprise, I could hear very loud quacking and splashing. I strained my eyes in the diminishing light and could just about make out two drakes, their white feather streaks catching the last of the light's rays. They were having a real squabble, squawking and splashing about at some speed – a high velocity chase was in progress with bursts of low flight and subsequent skid landings, sending huge and just visible ripples out across the surface. Finally one of them took off, low above my head flying out westwards across the fields. Peace now reigned as the remaining duck took sole possession of the pond. Looking up, the moon was emerging from behind a cloud in a

dark blue sky, the foreground silhouetted with the solid bulk of the church to the right. I stood and absorbed the silence, the peace and the deep rich colour of the crepuscular sky.

Continuing my walk along the High Street, lighted windows brightened the scene and front doors with stained glass added colour to the light. Fallen leaves had been flattened onto the road surface like an Autumn carpet, the street light picking out their yellow colour. Reaching the pub I turned right and kept close to the field wall, stopping at the break where the footpath leads down and across the stream. The moon was again clear of cloud and caught the moving water with its beam. A gentle gurgling also affirmed that water was moving, showing that rain, fallen since the Summer drought, has permeated the chalk and begun to fill the aquifers.

Once through the main part of the village, I turned left to cross Tayne Field, now in the dark, save for a faint lightness in the west, lingering until the sun's rays could no longer reach around the curve of the earth. Fresh but firm, a westerly breeze brushed my face and rustled the fluttering leaves above me, which were silhouetted against the last light. To my left the church's distinctive outline was darker still, a true landmark visible from almost everywhere in the village, and beyond. Flashing lights and a throbbing sound came from a low flying helicopter, the flashing light illuminating the rota blades. Crossing over Church Road I took the footpath alongside the Methodist Church, an ancient path which led from the Anglo-Saxon settlement on Tayne Field, but now tarmaced for modern shoes and convenience. A lamp lit my way halfway along but this footpath will have rarely been used after sunset all those centuries ago, when skies were very dark once the sun had set. This footpath was re-routed when the Silverlands estate was built, but it can be picked up again running north from Silverlands Road through to Ethelburga Drive and then on across Brady Road and beyond. Returning home along Ethelburga Drive, early evening had turned to night and aircraft lights showed up criss-crossing the sky at different levels, too high for their sound to reach my ears and faint stars began to show between clouds, which were already forming for the next bout of rain.

The following day I walked past the pond again, but this time there were four pairs of mallards in the lower pond, and two more pairs in the upper. Whatever squabble had taken place the night before, it was now past and settled, for the time being at least.



Diary of Forthcoming Events

This page is printed to give readers and organisers the opportunity of planning events without clashing with existing ones, which are already in the 'diary'. It is not intended as a means of advertising and we take no responsibility for errors or omissions. Acceptance is at the discretion of the editor. Please send your updates by email to pbarnes20@icloud.com.plus.com or via methods outlined on Page 4.

Location and name codes below:

One-Off Events

Date	Time	Event	Where	Tel. No.	Date	Time	Event	Where	Tel. No.
1 Dec -6 Jan	Evening	Mount Pleasant Close Christmas Lights	MPC		19-Dec	Evening	Christmas Present Delivery Service		
03-Dec	3pm	The Haywardians Christmas Concert	LMC		24-Dec	3pm	Crib Service	LPC	
16-Dec	7.30pm	Beetle Drive	RMVH		24-Dec	11pm	Midnight Service	LPC	
09-Dec	TBC	Music on Friday Christmas Music	LPC		2023				
10-Dec	6pm	Cantores Christmas Concert	LVH	07840796383	17-Jan	TBA	Gardeners' Society AGM		
10-Dec	6.30pm	The Big Fat Christmas Quiz	EVH	07514758936	13-21 May		Lyminge Festival		863076
11-Dec	11am	Elham Christmas Food & Craft Festival	Elham Square	07756087935	20/21 May		Garden Safari		863856
17/18-Dec	See P6	Festival of Nativity Scenes	LPC		18-Mar		Cantores - Vivaldi's Gloria	TBC	07840796383
18-Dec	6pm	Carols by Candlelight	LPC						

Weekly Events

Day	Time	Event	Where	Tel. No.	Day	Time	Event	Where	Tel. No.
Mon	9.30am	Dementia & Me Unit	AUKL	269602	Wed	10am	Painting and drawing	AUKL	269602
Mon	10am	Open House Coffee House	EVH	863394	Wed	10.30am	Pilates	RMV	07944028445
Mon	10am	Bridge Club	LBC	863177	Wed	2pm	Bingo (Start date TBC)	EVH	
Mon	10.30am	Lyminge Larks (Singing)	LMC	07951572920	Wed ⁵	3pm	French Conversation	Call	862972
Mon	10.30am	Cognitive Stimulation Therapy	AUKL	269602	Wed	7pm	Tayne Centre Circuits	TC	07925982995
Mon	11am	Pilates	TC	07825109670	Wed	7.30pm	Cantores Dominicae Choir	LVH	07840796383
Mon	5.30pm	Pilates	EVH	07951608008	Thurs	10am	Lyminge Morning Art Group	EVH	01303211364
Mon	6.30pm	Ballroom/Latin/Salsa Dancing	TC	07966751991	Thurs	10am	Dementia & Me Unit	AUKL	269602
Mon	6.30pm	Judo Club	LVH	862946	Thurs	10.15am	Baby Rhyme Time	LL	03000413131
Mon	7pm	Pilates	EVH	07951608008	Thurs	10.30am	Cognitive Stimulation Therapy	AUKL	269602
Mon	7.30pm	Yoga	RMV	07977503897	Thurs	11.45am	Streetz to Streetz (fish and chips)	AUKL	269602
Tues	9.30am	Dementia & Me Unit	AUKL	269602	Thurs	2pm	Lyminge Afternoon Art Group	TC	07870494644
Tues	9.30am	Dance Fitness Class	EVH		Thurs	3.30pm	Pilates	EVH	07944028445
Tues	9.45am	Young at Heart Dance/Fitness	EVH	07565182259	Thurs	6pm	Pilates	TC	07951608008
Tues	10am	Lyminge Baby & Toddler Group	TC	07870405567	Thurs	6.15pm	Pilates	EVH	
Tues	10.30am	Poetry Group	LL	See P8	Thurs	6.45pm	Pilates	TC	07951608008
Tues	10.30am	Cognitive Stimulation (Cogs)	JC	269602	Thurs	7pm	Short Mat Bowls	LVH	863842
Tues	11.45am	Pilates	EVH	07834839801	Thurs	7.30pm	Pilates	EVH	07951698008
Tues	2pm	Seated Yoga	AUKL	269602	Fri	7.30pm	Ballroom and Salsa Dancing	EVH	07967979610
Tues	2pm	Pickleball	EVH	863819	Fri	8am	Chiropody (appointment only)	AUKL	269602
Tues	5pm	Pilates	EVH	07944028445	Fri	9.30am	Dementia & Me Unit	AUKL	269602
Tues	6.45pm	Short Mat Bowls	LVH	863842	Fri	9.30am	Pilates with Katherine	AUKL	269603
Wed	9.30am	Dementia & Me Unit	AUKL	269602	Fri	10am	Feel a Fairy Tale Sensory	EVH	07800737936
Wed	9.30am	Age UK Info & Advice – drop in	AUKL	269602	Fri	10.15am	Talk Time	LL	
Wed	9.30am	Morning munchies (breakfast)	AUKL	269603	Fri	10.45am	Movement to Music	AUKL	269602
Wed	10am	Pilates	TC	07825109670	Fri	7pm	Table Tennis	EVH	
Wed	10am	Baby/Toddler Group	EVH		Soon		Reading Group	LL	03000413131

Monthly Events

When	Time	Event	Where	tel. no.	When	Time	Event	Where	Tel. No.
1st Mon	2pm	RBL, Elham Valley	St Mary's	862508	4th Wed	2.30pm	RM Circle	RVH	862913
3rd Mon	7pm	Etchingham Cinema Club	EVH	07544670363	Last Wed	7.30pm	Quiz Night	C&H	01303901011
Last Mon		Parish Council Meeting	SNL	07715221705	3rd Thurs	7.30pm	LA Committee Meeting	TC	07840796383
1st Tues ³	7.30pm	LHS Talk/Event	TC	863879	Last Thurs	1.30pm	Dementia Café	AUKL	269602
2nd Tues	2pm	Library Reading Group	LL	862972	4th Fri	7.30pm	Beetle Drive	RVH	862616
3rd Tues ²	7.30pm	Gardeners' Society	TC	07703149008	Last Fri	1.30pm	Team Quiz	AUKL	269602
Last Tues	10.30am	Lyminge Poetry Group	LL	03000413131	2nd Sat	10am	Postling Ch. Coffee Morning	PC	863536
1st Wed	10.30am	Lyminge Friends	LMC	862598	2nd Sat	10am	Ethelburga Quilters	EVH	
2nd Wed	11am	Singing Group	AUKL	269602					

¹ In term time only ² Except Jan and Feb ³ Except Jan, Feb, and trip in Aug ⁴ Except Aug and Dec ⁵ Not held in August

AUKL: Age UK Lyminge; **C&H**: Coach & Horses; **EVH**: Etchingham Village Hall; **ELVH**: Elham Village Hall; **ERA**: Etchingham Residents' Association; **ES**: Elham Square; **EVLT**: Elham Valley Line Trust; **JF**: Jubilee Field; **KH**: Korf House; **LB**: Laing Bennett; **LBC**: Bowls Club; **LL**: Library; **LMC**: Lyminge Methodist Church; **LPC**: Lyminge Parish Church; **LPS**: Lyminge Primary School; **LVH**: Lyminge Village Hall; **LW**: Lord Whisky; **NP**: Nailbourne Court; **PC**: Postling Church; **PH**: Lord Whisky, Park House; **PVH**: Postling Village Hall; **RVH**: Rhodes Minnis Village Hall; **RMC**: Rhodes Minnis Church; **RMCS**: Rhodes Minnis Cat Sanctuary; **RR**: Rigidon Room; **SMVH**: Stelling Minnis Village Hall; **SNL**: See Newsletter for info; **SP**: Sibton Park; **SPCC**: Sibton Park Cricket Club; **TC**: Tayne Centre; **TF**: Tayne Field; **WF**: Well Field



St Mary and St Ethelburga Parish Church, Lyminge

Sunday 4th December

Lyminge 10am WOW Service
Paddlesworth 6pm Evensong BCP

Sunday 11th December

Lyminge 8am Holy Communion BCP
6pm Evensong BCP

Sunday 18th December

Paddlesworth 9.30am Holy Communion CW2
Lyminge 10am Holy Communion CW1
6pm Carols by Candlelight

Saturday 24th December Christmas Eve

Lyminge 3pm Crib Service
11pm Midnight Mass
Paddlesworth 11.30pm Carols in the Pub (Cat and Custard Pot)

Sunday 25th December

No Services at Lyminge or Paddlesworth
Postling 09.30 Christmas Morning Service

Sunday 1st January 2023 New Year's Day

No Service at Lyminge
Elham 10am Benefice Holy Communion
Paddlesworth 6pm Evensong

To contact the churches, please phone:

Rev Deb Scoble, Curate. The Rectory, Lyminge.

Tel: 01303 862747 www.elhamvalleygroupofchurches.co.uk
www.achurchnearyou.com

Lyminge Methodist Church

A warm welcome awaits you at the following services to be held at **11am**, followed by a time of refreshment and fellowship.

4th December - Rev. Gill Songer (incl. Holy Communion)
11th December - **10.15am** Valley Service at Rhodes Minnis
18th December - Rev. Gill Songer
23rd December - **6pm** Carols by Candle/torch light
Christmas Day - Local arrangement

Rhodes Minnis Chapel

A warm welcome is extended to anyone who wishes to join us for the following services at 9.30am in our small and beautiful Chapel and to share fellowship after the services over coffee and biscuits.

4th December - Rev. Gill Songer

11th December - **10.15am** Valley Service led by Mr. David Songer

18th December - Carol Service led by the local congregation
There will be no services on Christmas Day or New Year's Day

8th January - Mr. Richard Blackwell

... and everyone is welcome to join us at the following:-

Advent Course which continues on **Tuesdays, 6th and 13th December at 2pm** and on **Thursday 15th December at 7pm a Candlelit Carol Service**, both led by Rev. Gill Songer

Postling Church Services

Thurs 1st Dec 6.30pm Advent Meditation by Candlelight

Sun 4th Dec 9.30am Holy Communion

Sun 11th Dec No service in Postling

Thurs 15th Dec 6.30pm Advent Meditation by Candlelight

Sun 18th Dec 9.30am Morning Service

Mon 19th Dec 7.30pm Advent Carol Service with the Shepway Singers in the Barn at Pent Farm

Sat 24th Dec 11.30am Crib Service in the Barn at Pent Farm

Sun 25th Dec 9.30am Morning Service for Christmas Day

Christians in Lyminge



3rd December: A concert by the **Haywardians** will be held in the Methodist Church starting at 3pm. There will be a retiring collection

9th December: Music on a Friday will take place in the Parish Church starting at 7.30pm

17th/18th December: A Festival of Nativity Scenes will be held in the Parish church from 10am until 3pm on 17th and 12noon until 3pm on 18th. We would love to display your nativity scene. Please contact Angela on 01303 862073 if you would like to add yours to the display.

18th December: Carols by Candlelight 6pm at the Parish Church.

23rd December: Carol Service 6pm at the Methodist Church.

Lyminge Newsletter

Terms & Conditions: Copy deadline for next edition - 18 December 2022

Please email your copy to the editor (pbarnes20@icloud.com). Your payment must be received before your article or advert can appear in the Newsletter. Invoices will be issued and should be paid ASAP either by BACs, cheque, credit card or cash (details on invoice). **Business adverts** cost from £9.50 per month or £95.00 per year. **Personal and charity adverts and articles** from £3 per month, or £30.00 per year. The annual rate offers 12 entries for the price of 10. Please make cheques payable to **'The Lyminge Association'**. If you do not have email, a typed paper-copy may be left with the payment at the Library. Newsletter printed by Canterbury Print & Mail.

Lyminge Association accepts no liability for the accuracy of the advertisements or subsequent actions arising in conjunction with advertisers in the newsletter.

Further details from Peter Barnes (editor) on 01303 863737 or pbarnes20@icloud.com

China
China



圣诞节快乐

MERRY CHRISTMAS



Open Christmas Day

Restaurant and Takeaway
12 noon to 7pm

Eat as Much as You Like

& select from over 200 dishes.

£37 per person and £18 per child (under 1.2m)

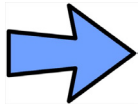
To book your table please pop in or phone
01303 863 288 or 07539 200 804

We are closed from the 26th to the 28th of December
and re-open on the 29th of December.

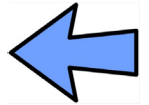


LA December issue 2022

18/11/22



**Because of the holiday period, the January edition
of the newsletter will be delayed until early January 2023**



District Councillors' Update - December 2022

Inflation and the cost of living are very much on everyone's minds. Your District Council has been working with partners across the public and voluntary sectors to offer help to those most affected. As well as information on the council website there's a leaflet of where to find financial and other help. On 12 November a 'Cost of Living' event was held at FOLCA (the former Debenhams store in Folkestone) where statutory and voluntary services gave advice and help including providing winter coats. (You can donate winter coats at the Folkestone Community Hub at Age UK South Kent Coast Shaftesbury Avenue Cheriton.) There's also a 'warm spaces' initiative to host people during the day so they can be warm and in company during the day. Details of these schemes and more are on the Council website and there will be information in the next edition of *Your District Today* which is delivered to every home.

The District Council is also facing financial challenges from inflation and a desperate shortage of planning staff. These are problems we share with every district council in the land and savings are being sought to maintain our statutory services (those we have a legal obligation to deliver). This may mean reducing some of our discretionary services and we are also re-evaluating projects. The new Leisure Centre at Princes Parade in Hythe is on hold but we hope a solution can be found so that the development at this location is not just houses.

We both attended Postling Parish Council meeting on 27 September and Lyminge Parish Council on 31 October. As well as reporting on council matters we answer questions and listen to local views.

We wish you all a Merry Christmas and Happy New Year and thank all the people who make our villages good places to live. Thank you to those who serve on the parish councils, run our places of worship, volunteer at Lyminge school, help at Age UK, those who write for, edit or deliver this newsletter, those who run our local shops, pubs and businesses, the village hall committees and everyone who keeps the many village societies and organisations going for the benefit of all. Thank you to all the volunteers and all the good neighbours.

Susan Carey (susan.carey@folkestone-hythe.gov.uk 01303 670561) & **Cllr Jenny Hollingsbee** (Jenny.hollingsbee@folkestone-hythe.gov.uk 07887918458) - your district councillors for North Downs West, Folkestone and Hythe District Council



Cantores.
Music Director - Dr Jon Williams

joined by
Hythe Town Concert Band
Musical Director & Conductor - Richard Hubbert

Christmas Concert

Saturday 10 December at 6.00pm
Lyminge Village Hall

Programme to include a selection of festive music with some surprises!

Festive raffle with sleigh loads of prizes!
Refreshments served after the concert

Tickets £10:
on the door or via choir members




Folkestone - Hythe, Operatic and Dramatic Society presents

THE FAIRY GODMOTHER OF ALL PANTOMIMES

Starring **MIKE NOLAN**
from *The Fizz*

CINDERELLA

16 - 29 December 2022

BOX OFFICE 01303 223925
or towertheatrefolkestone.co.uk

Tickets from £10.50

AFHODS THE FRIENDS OF THE OPERA AND DRAMATIC SOCIETY LTD

The Tower Theatre, North Road, Shorncliffe, Folkestone CT20 3HL



Registered Charity 1180504

Festival of Nativity Scenes



A varied array of Nativity scenes
in the Parish Church
17th 18th December

Saturday 10am to 3pm

Sunday 12noon to 3pm

Mulled wine, tea, coffee, mince pies and cake



Lyminge Judo Club

(British Judo Club Registered)

We are a small friendly village club. We welcome and encourage both novices and skilled players and train every Monday evening at Lyminge Village Hall from 6.30pm. Open to all ages from 6 upwards - no upper age limit.

Juniors £2.50 per week; Seniors £3.50 per week. First session free, with no obligation.

Contact: Selwyn Nichols 01303 862946 or selwyn_nichols@hotmail.com

CHRISTMAS
Beetle Drive
Family Fun Game



Rhodes Minnis Village Hall
Friday, 16 December - 7:30pm
Adults £2, children 50p.
Tea, coffee and juice provided.
There will also be a raffle.



Etchinghill Update - December 2022

ETCHINGHILL RESIDENTS' ASSOCIATION (ERA)

Chairman: David McCombe, 07939 076617 Email dmccombe1@gmail.com

Website: www.etchinghill.info Facebook: Etchinghill Residents

FILM NIGHTS - ETCHINGHILL VILLAGE HALL – There is no screening in December. Our next Film Night will be held on **Monday 16th January**, when we shall be showing 'Death on the Nile' (2022) starring Kenneth Branagh and Annette Bening - more details to follow in the January Newsletter Update.

ERA AGM - SUNDAY 4TH DECEMBER - 7 PM (DOORS OPEN 6.45 PM) ETCHINGHILL VILLAGE HALL. After the usual formalities, there will be a public open forum to discuss matters affecting the neighbourhood. Please join us to give your input. Refreshments will be served.

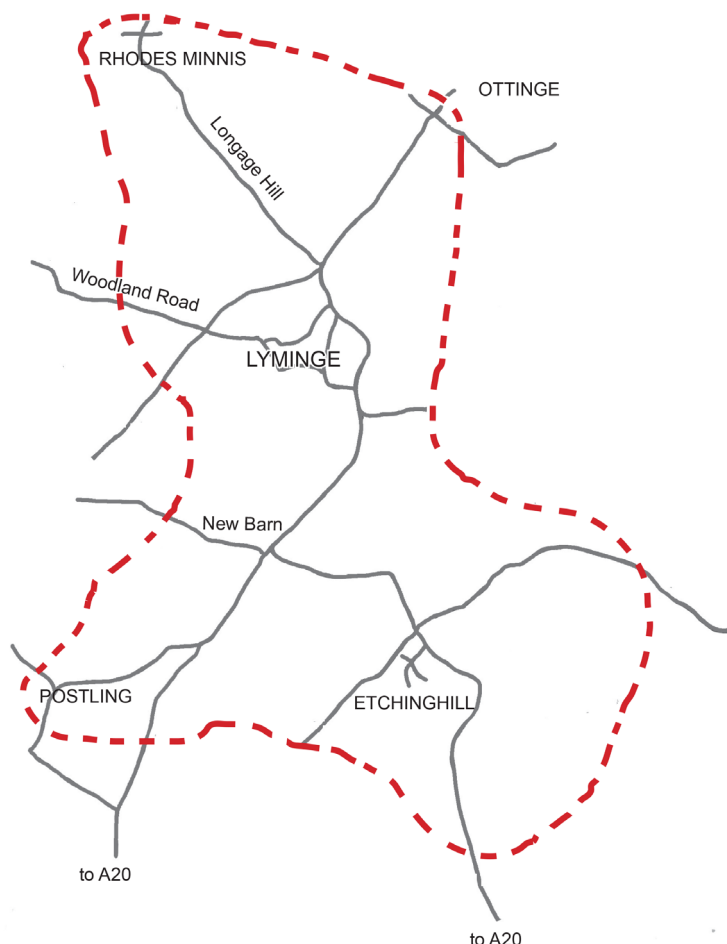
MERRY CHRISTMAS TO EVERYONE! The ERA would like to wish all residents, their families and friends, a Very Merry Christmas and a Happy New Year.

BIG FAT QUIZ - After 3 years of lock down, melt down and general down, down, down, the Big Fat Quiz returns on **Saturday 10th December 7pm** at Etchinghill Village Hall. Always a very popular and enjoyable evening. Reserve your table by phoning **07514758936**. Maximum of 6 per table. £3 per person payable on the night. At the time of writing there are only a few tables left. Bring your own refreshments for an enjoyable evening out. Christmas crackers will be provided and a grand raffle will also be held!

Village Hall Chairman: John White

In the Dark: please be reminded that the side roads in Etchinghill don't have very effective street lighting, so in the dark you might want to take a torch or wear outer clothing with a high vis strip.

News contact: Jacqui Blandford - 07543 966830 or email: jacqui.blandford@gmail.com



Santa's Delivery Area



This is the area to which Christmas presents will be delivered by Santa and his elves on the evening of Monday 19th December. The area covered by Santa is shown on the map and excludes the far end of Woodland Road and Elham!!

To repeat what is printed on the front page, the presents may be left at The Methodist Church, Church Road, Lyminge CT18 8JA on either **Saturday 10th** or **Saturday 19th December** **between 10am and 4pm**. Sorry - no other dates or times!! A receipt will be given for each bag of presents deposited.

The parcels need to be well wrapped and **CLEARLY LABELLED WITH THE RECIPIENT'S NAME AND ADDRESS** including POSTCODE.

A small charge of £2 is made per address; there is no limit to the number of presents per household, but they all need to be clearly marked with the recipient's name and address.

Kent's Leading Mobility Specialists

USED SCOOTERS FROM £395

BEDS FROM £995

CHAIRS FROM £595

Full Scooter Service FROM £39.50

Our quality made to measure multi-positional rise and recline chairs provide the ultimate in personal comfort

HOME DEMONSTRATION

Make it Britain

ACORN CERTIFIED

SAFE HANDS
Mobility Centres

Folkestone. Compass House
347-349 Cheriton Rd, CT19 4BP
Tel: 01303 274574
folkestone@shmobility.co.uk
ALSO AT BIRCHINGTON
www.safehandsmobility.co.uk

It has been three years but we are back!

The BIG FAT CHRISTMAS QUIZ

Saturday 10th December 7pm
(doors open 6-30pm)
ETCHINGHILL VILLAGE HALL
Max 6 per table, £3 per person
Table crackers included
Prizes for the winning team plus raffle
Bring your own refreshments
Have a party!
Reserve your table by phoning
the Village Hall on 07514758936
Any profits will go towards the maintenance of the Village Hall

Fifth Trust Update
www.fifthtrust.co.uk

Our Christmas Craft Fair will be held on **Saturday 3rd December**. We look forward to welcoming supporters old and new to the Elham Valley Vineyard, showcase our students' talents and get the festivities well and truly started!

Come along from **11am-3pm** to buy your Christmas tree, enjoy a mince pie and a glass of mulled wine or a burger from the barbecue, try your luck in the raffle, and stock up on our sparkling and still wine to toast the season.

Students and instructors are busy creating beautiful gifts including ceramic Christmas tree decorations and home ornaments, our ever-popular wooden reindeer, delicious jams and chutneys, and Christmas cards, wrapping paper, gift bags and labels.

If you can't make it on the day, we will still have Christmas trees and other seasonal fare available at the Vineyard, but don't leave it too late!

HEAVER & LINCH

Bespoke Handmade Kitchens & Furniture

Bespoke Handmade Cabinet Makers in Lyminge, covering Kent and the South East.
Over 30 years experience in creating stunning solid wood kitchens and furniture.
Get in touch for any advice, recommendations and a free quote.
Tel: **07832 360 603 or 07832 363 963**
Email: **heaverlinch@outlook.com**
Website: **www.heaverandlinch.co.uk**



Editor: pbarnes20@icloud.com

Coach & Horses

CHECK OPENING HOURS
For bookings and any help needed, please phone
01303 901011 or check
Facebook page
'Coach & Horses'

Find us on **facebook**

Tel: 01303 863737

Reduce utility costs - spend time in our Meet up, Warm up hub

MeetUp WarmUp



- A warm & welcoming environment
- Energy saving tips/Information
- Free phone charging points
- Free WiFi
- Free Flask (Limited availability)
- Fill up your own flask with hot water (save boiling your kettle)
- Free energy efficiency light bulbs

- Free hot water bottle (Limited availability)
- Tea and coffee available to purchase
- Light snacks available to purchase (including hot soup and bread & butter £1.00)
- Two course hot lunch £7.50



- Tea time snack pack to take home £3.50 (Sandwich, crisps and cake)
- Opportunity to join in many chargeable activities, meet others and stay warm



Age UK Hythe and Lyminge – Sanford House, Stade Street, Hythe, Kent, CT21 6BD
 Open Monday – Friday 9.30am – 3.30pm
 Saturday 10.30am – 1.30pm
 Sunday 10.30am – 1.30pm

Age UK Lyminge – Station Road, Lyminge, Kent, CT18 8HQ
 Open Monday – Friday 9.30am – 3pm
Age UK Ashford – Stanhope Road, Ashford, Kent, CT21 6BD
 Open Monday – Friday 9.30am – 3.00pm

Registered charity number 1125274. Company number 6589817. © Age UK Hythe and Lyminge 2022
 Registered charity number 1152993. Company number 6248833. © Age UK Ashford 2022

Call 01303 269602 for more information

SINGING FOR ALL

COME AND JOIN US
FREE INTRODUCTORY SESSION
CHRISTMAS SPECIAL
WEDNESDAY 14TH DECEMBER
11-12 NOON
AGE UK LYMINGE
EVERY 2ND WEDNESDAY OF THE MONTH AFTER THAT.
CALL 01303 269602

GENEROUSLY SPONSORED BY CANTORES, OUR LOCAL CHOIR.

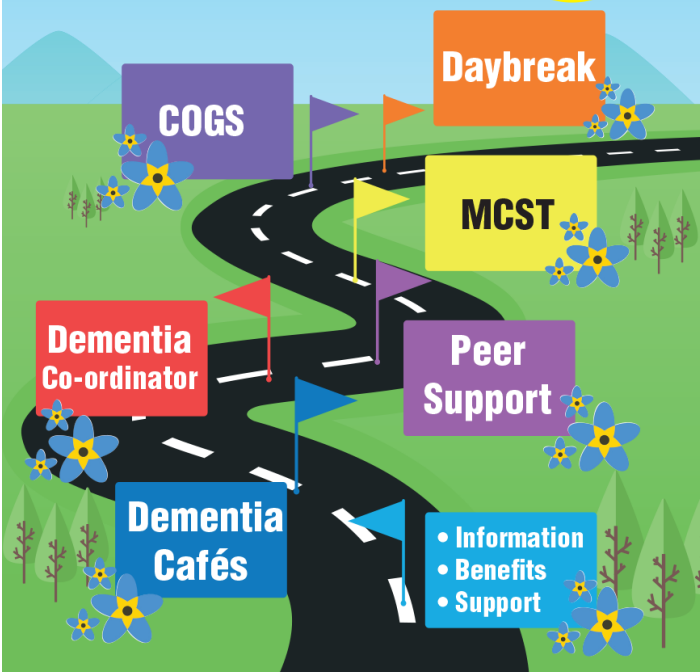
AGE UK - LYMINGE

Are you concerned about your memory?

Are you living with Dementia?

We can help guide you along your journey

Dementia & Me



Services and activities available.

Information and Advice is available to those by telephone, centre-based visits and home visits. We have a team of expert Information and Advice Officers who can help to maximise income by completing benefit checks to ensure individuals are receiving all they are entitled to. Our team are there to support individuals complete forms, using the right terminology for a more positive outcome. This service is free and available by appointment or drop into one of our many Dementia Cafés.

The **Dementia Co-ordination** team will work with and support those affected by dementia, including family and carers. The Dementia Co-ordinators will be there to help from pre-diagnosis, to support people to get a diagnosis, to access support services and provide the guidance they need to live as independently as possible within their communities. Free and available by appointment.

Dementia Cafés offer a safe place to socialise, meet others, ask questions and learn more about dementia and local services, whilst enjoying a hot drink and a slice of cake. Free, groups held at various locations throughout the month.

MCST (Maintenance cognitive stimulation therapy) is a 12 week programme that meet weekly for 1 hour 30 minutes for people living with mild dementia. Group members take part in meaningful and stimulating activities, proven to help maintain memory and mental functioning. The group provide a fun, supportive environment where people can build new friendships. £60 Mondays or Thursdays (moving to Friday from January) 10.30am -12noon.

COGS (Cognitive Stimulation Therapy) is a weekly 4 hour programme for people living with moderate dementia. COGS is a small group intervention for people who are experiencing difficulties with their memory. It works by providing ideas for people to help themselves maintain their cognitive abilities, including group discussions and activities. A 12 week programme, £20.00 per week on Tuesdays 10.30am – 2.30pm, (Thursday starting in January).

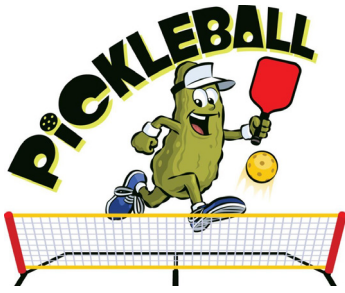
Daybreak services offer activity-based day care in a safe and secure environment for people living with moderate to late-stage dementia who need a little more support or have additional needs. As well as providing a meaningful day for participants, it can provide a day of respite for family or carers. Monday – Friday 9.30am – 3pm £35.35.

Services delivered at our bespoke unit at **Age UK Lyminge**, Station Road, Lyminge, CT18 8HQ. Transport is available on request.

For more information or to speak to one of the team call: **01303 269602**, dementiadaybreak@ageukhl.org.uk
 call: Carlene Ryan, Dementia Organiser
07379 646426, demo@ageukhl.org.uk



Registered charity number 1125274. Company number 6589817. © Age UK Hythe and Lyminge 2022



*Think you are over
the hill?
Try Pickleball
- it provides
exercise in a highly
enjoyable way*

We are a friendly non-competitive group, looking for new players of any age to join us.

It's a simple sport, easy to learn and equipment is supplied. An inexpensive way to have fun all year round.

Etchinghill Village Hall

Tuesdays 2pm - 4pm.

Call 01303 862696 or 01303 862928

Lyminge Village Hall Questionnaire - Summary of Responses

We took every opportunity possible to survey the area about the Lyminge Village Hall. Unfortunately, the response rate was low and insufficient to produce any meaningful actions, such as the reinstatement of the firework display.

From the other responses it was clear that most people were not aware of the full range of village hall activities. A few people wanted to see more community activities. Three new people said they would help run an event, along with the reassurance of support from Lyminge Association if needed.

We had many comments saying how nice the hall looked following the refurbishment which is resulting in increasing bookings. Many people said it's a lovely hall with good facilities and cheaper than elsewhere! So, if you have any ideas or want to discuss the findings with us please email me gerrydcruz@hotmail.com and we can chat or visit our website lymingevillagehall.org.uk. Thank you

Doctors' NewsNotes

What is screening?

Screening is a way of identifying apparently healthy people who may have an increased risk of a particular condition. The NHS offers a range of screening tests to different sections of the population. The aim is to offer screening to the people who are most likely to benefit from it. For example, some screening tests are only offered to newborn babies, while others such as breast screening and abdominal aortic aneurysm screening are only offered to older people.

What types of screening are offered by the NHS in England?

- Screening within pregnancy
- Screening for newborn babies
- Bowel cancer screening
- Abdominal aortic aneurysm (AAA) screening
- Diabetic eye screening
- Cervical screening
- Breast screening

This month: cervical screening

Cervical screening is a free health test that helps prevent cervical cancer. It checks for a virus called high-risk human papillomavirus (HPV) and, if you have HPV, cervical cell changes (abnormal cells).

Cervical screening is a free health test available on the NHS as part of the national cervical screening programme. It helps prevent cervical cancer by checking for a virus called high-risk HPV and cervical cell changes. It is not a test for cancer.

You should be invited for cervical screening if you have a cervix. Women are usually born with a cervix. Trans men, non-binary and intersex people may also have one. In the UK, you are automatically invited for cervical screening if you are: between the ages of 25 to 64, registered as female with a GP surgery. You may get your first invite up to 6 months before you turn 25. You can book an appointment as soon as you get the invite. Your cervical screening result will help decide when you are next invited for cervical screening. You may be invited: every year, every 3 years, every 5 years or straight to colposcopy for more tests.

What are the benefits and risks of cervical screening? Cervical screening aims to identify whether you are at higher risk of developing cervical cell changes or cervical cancer. This means you can get any care or treatment you need early. England, Scotland and Wales now use HPV primary screening, which is even better as it is based on your individual risk. This means how frequently you are invited for cervical screening is based on your last result and within a time frame that is safe for you.

What happens at cervical screening? At your cervical screening (smear test) appointment, a nurse takes a sample of cells from your cervix using a small, soft brush. The test only takes a few minutes. It is best not to book a cervical screening when you have your period because it can make it harder to get a result.

What happens at the GP surgery? Plan to spend at least 30 minutes at your GP surgery, which may include waiting for your appointment or being directed to the room. The test itself, where your nurse takes a sample of cells from your cervix, will only take a few minutes.

Your cervical screening results should arrive by post within 4 weeks.



Lyminge Businesses' Christmas and New Year 2022/23 Opening Hours



	Fri 23-Dec	Sat 24-Dec	Sun 25-Dec Christmas Day	Mon 26-Dec Boxing Day	Tues 27-Dec	Wed 28-Dec	Thurs 29-Dec	Fri 30-Dec	Sat 31-Dec New Year's Eve	Sun 01-Jan New Year's Day	Mon 02-Jan
Age UK, Lyminge	Normal	Closed	Closed	Closed	Closed	Normal	Normal	Normal	Closed	Closed	Closed
Auto-Economy Garage	Normal	Closed	Closed	Closed	Closed	Normal	Normal	Normal	Closed	Closed	Closed
Chemist	Normal	Normal	Closed	Closed	Closed	Open	Normal	Normal	9am-1pm	Closed	Closed
China China	Normal	Normal	Normal	Closed	Closed	Closed	Normal	Normal	Normal	Normal	Closed
Coffee Cabin	Closed	Closed	Closed	Closed	Closed	Closed	Closed	Closed	Closed	Closed	Closed
Coach and Horses	12noon-11pm	12noon-11pm	12noon-2pm	12noon-6pm	2pm-9pm	12noon-9pm	3pm-9pm	12noon-10pm	12noon-7.30pm 7.30pm -1am Ticket Only	12noon-9pm	12noon-9pm
Farm Shop, Lyminge	Open	Open	Open	Open	Open	Open	Open	Open	Open	Open	Open
Farm Shop, Ottinge	9am-2pm	Closed	Closed	Closed	Closed	Open	Open	Closed	Closed	Closed	Closed
Laing Bennett	9am-1pm	Closed	Closed	Closed	Closed	10am-2pm	10am-2pm	10am-2pm	Closed	Closed	Closed
Library	Open	Closed	Closed	Closed	Closed	10am-2pm	10am-5pm	10am-2pm	9am-1pm	Closed	Closed
Premier Food Store	7am-8pm	7am-7pm	12noon-2pm	8am-4pm	7am-7pm	7am-7pm	7am-7pm	7am-7pm	7am-7pm	8am-2pm	7am-8pm
Snippers and Clippers (Ladies)	9am-5pm	9am-2pm	Closed	Closed	Closed	9am-5pm	9am-5pm	9am-5pm	9am-2pm	Closed	Closed
Snippers and Clippers (Men)	8.30am-6pm	Appointments on 07522494969	Closed	Closed	Closed	Appointments on 07522494969	Appointments on 07522494969	Appointments on 07522494969	Appointments on 07522494969	Closed	Closed
The Surgery, Church Road	Normal	Closed	Closed	Closed	Closed	8am-6.30pm	8am-6.30pm	8am-6.30pm	Closed	Closed	Closed
New Lyminge Surgery	8am-6.30pm	Closed	Closed	Closed-BH	Closed-BH	8am-6.30pm	8am-6.30pm	8am-6.30pm	Closed	Closed	Closed-BH

PILATES classes

TUESDAY	17:00	Etchinghill Village Hall
WEDNESDAY	09:20	Rhodes Minnis Village Hall
	10:30	Rhodes Minnis Village Hall
THURSDAY	15:30	Etchinghill Village Hall
FRIDAY	17:00	Rough Common Village Hall

All classes are suitable for any level of ability from complete beginner to intermediate.

Price: £10

Limited spaces,
please book in advance.



For more information:

lucianaclarke.pilates@gmail.com

07944028445

www.lucianaclarkepilates.com

Rhodes Minnis Circle

Derek Smith gave us a very interesting talk at our meeting in October. He spoke about the **Kent & East Sussex Railway** which began in 1898 starting in Rolvenden and Tenterden. In 1948 it was taken over by British Rail, and was extended to Bodium. In 1974 it became a preserved line as the Rother Valley Railway Company. It is hoped to eventually extend the line to Robertsbridge.

The competition was won by **Diana Bennett** with **Sandra Dowdall 2nd**, **Marion Hoare 3rd** and **Molly Walker 4th**

On the **14th December** we are holding our **Members Christmas Party** with **Maureen Jones** presenting a selection of music. We start at **2pm** with a bring and share tea. There will be a raffle but no competition.

We also wish all our friends in the villages a Very Happy Christmas.

Marion 862913

Editor: pbarnes20@icloud.com



LYMINGE HISTORICAL SOCIETY



Merry Christmas Everyone

**Our final talk for 2022 is below
Do come and join us**

6 December: John Hendy – The Churches of Romney Marsh (After a short AGM)

The meeting starts at 7.30pm in the Tayne Centre
Mince pies and tea/coffee will be served

!!Lyminge a History Part 12 now available!!

This can be purchased at the Library, Lyminge Food and Wine or direct from Daphne on the number below. You can also purchase it at the AGM and talk on 6th December. NB We now have a card reader for purchase of books and payment of Membership Fees.

All Lyminge a history publications, can be purchased individually through the Lyminge Village Store, Lyminge Library or online via our website using PayPal.

Plus: purchase Parts 1-5 as a bundle for £22 or Parts 1-10 for £50*

To take advantage of the offer please call Daphne Andrews on 01303 862865. NB This bundle offer is not available from The Library or Lyminge Food and Wine.

*Postage and packaging extra

Email: lymingehistoricalsociety@gmail.com

Website: www.lymingehistoricalsociety.co.uk

Facebook: www.facebook.com/Lymingehistoricalsociety

Letters to the Editor

Dear Sir, I would like to thank Pent Farm, Postling for their Open Day on 5th November which was well attended despite the poor weather.

The owners made everyone of all ages welcome and the lovely carrot and ginger soup went down very well.

The Postling Wildlife group stall was very informative and the flour grinding and gin stalls proved popular along with the Thoughtful Food stall from Lyminge.

We had a farm walk where the owners explained about silt run off from the fields causes many problems in the streams and how they had laid fallen trees across to slow the stream and capture the silt. They also put in beetle banks [raised strips typically planted with grasses] across the fields to help stop the run-off. They don't cut hedges, only trim them which encourages wildlife and we were treated to watching yellow hammers and a flock of fieldfare and redwings. They also have stonechats on the land which are not common in this area. The field margins are abundant with wildlife and the owl boxes are occupied by barn owls and kestrels

They explained how growing wheat to achieve the right amount of protein is almost impossible without the use of nitrogen and the use of Roundup, something they are reluctant to use but they need to produce food for the table and make the business viable. We were shown around the farm machinery, explaining their workings and purpose, together with their cost which was frightening.

We finished the day with a beef burger made with proper farmed beef done on the BBQ. What a wonderful end to a lovely day, despite the weather.

Thank you Pent Farm. I hope we can visit next year.

Pat Lavin, Etchinghill



Firework Bin Fire At Village Hall

There was an incident on Saturday 5th November where a group of people came up to Lyminge Village Hall rear car park in the evening and set off some fireworks for their group to enjoy. Unfortunately, at the end of their display, the group disposed of the remnants of their fireworks into the plastic wheelie bin (which belongs to Lyminge Preschool) next to the village hall. The CCTV footage of this incident shows smoke coming from the bin about two minutes after the group had left the site and results in a fire that completely destroys the bin and severely damages the two adjacent bins. Lyminge Village Hall committee are acutely aware that this incident could have resulted in the wooden soffits of the hall catching fire and the whole building going up in flames. There is no suspicion that this was arson; we believe it was an accident and there is no need for any witch-hunt or public-shaming. We are writing this note for information and as a warning to everyone about the responsibility we have of ensuring that fireworks are both set off and disposed of in a safe manner. **Finally, please be aware that the Parish Council owns the car park surrounding the hall and you should seek their permission if you wish to set off fireworks in this car park in future.**

Lyminge Friends December 2022



As I write, we are looking forward to our **Christmas Party on 7th December**, where instead of the normal meeting, members and friends will meet at **12.30pm** in the **Clayson Hall, Tayne Centre** for the **Christmas Lunch Party with Secret Santa and Raffle.**

The cost is £7 per person and must be prepaid. Please call 862015 if you haven't already booked and paid.

Thanks to everyone who has already contributed towards it.

Finally in 2022, we will meet at **12noon** for lunch in **China China** on **New Year's Eve, Saturday 31st December.**

Please call 862015 if you haven't already booked your place.



--- 2023 ---

On **Wednesday 4th January**, we start 2023 with an illustrated talk from John Buss called: **The 1960s: The decade that rocked the nation.**

The venue for our January Lunch is yet to be confirmed so watch this space. As usual, this will have to be pre-booked so please call us on 862015 to book your place.

Meetings are 10.30am - 12noon in the Methodist Church.

Entry for 2023 will be £4.00, including refreshments.

We are a friendly social group and welcome new members so just drop into a meeting, or if you'd like to talk to one of us first, please call 863500.

Please wear appropriate clothing and bring a blanket with you if you feel the cold.



About Us

- Forest School centred Early Years setting
- Provides children between the ages of 2-5yrs opportunity to learn, play and develop in a holistic way.
- Focus on growing practical skills and emotional well-being
- Highly experienced and qualified practitioners

Limited spaces
Mon-Fri 08:00-18:00
Open all year round
(including school holidays)

Contact us to arrange a viewing

☎ 07540187680

✉ Office@inthestickschildcare.co.uk

🌐 www.inthestickschildcare.co.uk

📍 Little Hemsted Farm,
Woodlands Road, Lyminge
CT188DL



LYMINGE PARISH COUNCIL

December 2022 Newsletter

Forthcoming Council and Committee Agendas are displayed on the Council notice boards on Tayne Field and the entrance to the Village Hall car park, Etchinghill. Agendas and minutes are published on the Council's website: www.lymingeparishcouncil.org.uk and Facebook page. We invite you to read the minutes online or on the noticeboards which may provide the information you are seeking regarding a particular item, but correspondence is always welcome from parishioners and can be sent to the Clerk at the addresses given at the bottom of this page.

LYMINGE PLAY PARKS - We are pleased to see the works started on the Tayne Field and Jubilee Field Play Parks. Unfortunately the extremely wet weather has meant the works have been suspended due to the boggy ground conditions. We hope the works will restart soon once the ground is drier. Please keep an eye out for a future date for an opening ceremony to celebrate the completion of several years of hard work by Lyminge Youth Action and many members of our community.

RHODES MINNIS FIELDS - Many thanks to everyone who participated in the October Full Council meeting in Rhodes Minnis, it was great to hear your thoughts on the PC-owned fields in the village. Please continue to engage with us as we explore possibilities for future management of these fields.

LYMINGE POND UPDATE - The new pond at the bottom of Lyminge Court Lodge Green looked rather sad throughout the summer drought. We are still planning to improve the functioning of this pond for wildlife in the future, and hope that it will provide a suitable habitat for spring-breeding wildlife for years to come. In the

meantime it has demonstrated recently its value as an overflow for the original rainwater run-off drainage pond. Both have filled up with the persistent recent rains, preventing any flooding of the High Street up to now. We continue to monitor these ponds and their efficacy for flood-control and providing wildlife habitat.

COURT LODGE GREEN MOWING - The annual grass cut-and-collect on Lyminge Court Lodge Green was undertaken on the 20th and 21st October. The morning of the 20th was very wet and consequently the cut has left areas of mud on the field which is not ideal. Some parish residents have also commented that the cut was too severe, with possible negative consequences for local wildlife. This is true to some extent, and ideally we would like slightly less of the field cut than was cut this year.

Our management strategy for Court Lodge Green is to cut the field once a year (after wildflowers have seeded) and have the cuttings removed. This removes nutrients from the field which stops various vigorous grasses dominating the field and allows a larger diversity of wildflowers to flourish. We try to leave some areas uncut, as shelter is important for many

wildlife species over winter. It is a balancing act. A little bit more was cut this year than planned but there is still a fair amount of shelter left around the edges and in a few patches left on the field, but we accept that these patches could have been a bit bigger on this occasion. Next year it may be worth marking out the cutting areas clearly, and possibly staggering the cut to ensure some different levels of vegetation through the winter.

LYMINGE FEATURED AT KENT'S PLAN BEE SUMMIT -

On Tuesday 22nd November KCC held a virtual "Kent's Plan Bee Summit", which included several expert speakers discussing the role land management can play in recovering pollinator populations. One of the presentations was given by Cllr Tony King who explained how Lyminge Parish Council has been improving the management of LPC-owned community green spaces for people and biodiversity in general, and specifically for pollinating insects that play such a fundamental role in the functioning of our natural and agricultural ecosystems. It is great that the dedicated work of our volunteer Parish residents is being highlighted at events such as this.

TREE-PLANTING 2022 - Thanks again to everyone who participated in the planting and/or maintenance of the Queen's Green Canopy trees that were planted across the Parish in March this

year to celebrate the Platinum Jubilee of Her Majesty Queen Elizabeth II. All 21 trees (7 in each of Rhodes Minnis, Etchinghill and Lyminge) have survived the year, despite the long summer drought. Everyone who helped with the watering of these trees made an important contribution to their survival! An additional four fruit and nut trees were planted at the same time, kindly provided by Lyminge Village Hall, as part of a strategy to help increase the availability of locally-produced food to our community. Earlier in the year a native crab apple tree was planted on Lyminge Court Lodge Green by family and friends in memory of local resident Les Preston, which has also survived the year thanks to regular care and attention. Six bare-root silver birch saplings were provided by Kent Men of Trees and planted in March by Lyminge Scouts along the north bank of Jubilee Field, all have survived thanks to occasional watering. Another 105 bare-root tree whips were planted in March around the Parish, of which some have survived the drought but many did not. Lyminge Scouts will be planting another 450 bare-root native tree whips in November and December this year, hopefully the earlier planting time will give them a better chance of survival next year, and we can also hope for a less dry summer next year. Counting all the above, our community will have planted 587 trees in the Parish during 2022, a great effort by all involved.

DECEMBER MEETING DATES

F&A Committee – no meeting in December

Full Council Meeting – Monday 12th December 2022 at 7.30pm, Tayne Centre, Lyminge

Sarah Harrison, Clerk

Correspondence Address: Lyminge Parish Council, 18 The Sidings, Lyminge CT18 8HH

Telephone: 07999 403 948 Email: clerk@lymingeparishcouncil.org.uk

www.lymingeparishcouncil.org.uk

www.facebook.com



Thoughtful Food....

...is a group of local volunteers looking at our food, and how this impacts climate change. Our aims are to support people to produce more of their own food, and to shop locally, sourcing seasonal produce. We also run a community allotment in Lyminge and welcome new members.

Contact: thoughtfulfoodgroup@gmail.com or on Facebook and Instagram @thoughtfulfoodgroup

Next **Thoughtful Food** meeting, **Tuesday 12th December, 7.15pm** at The Coach and Horses. All welcome

Pent Farm Open Day

On Saturday 5th November members of **Thoughtful Food** took a stall with information and free seedlings to the Back British Farming event at Pent Farm Postling.

We enjoyed an enlightening morning where we learnt how many farmers today are increasingly aware of the land need and the wildlife around them and looking after our most precious resource - the soil.

Sometimes it is very much an uphill battle and yet they are persevering and in Debbie's words - if at first you don't succeed - try, try again!

With increasingly unpredictable weather patterns and long term climate severely changed, farmers are at the forefront of the provision of food for a hungry world as well as making sure the land is regenerated and 'lives on'. We were treated to a farm tour to see different approaches and also had a wide range of birds pointed out as well as seeing an impressive Community Garden on their land which is used for therapeutic gardening sessions. Thank you Debbie and Tom Raynolds.

See Letters to the Editor P12.



And For All Of Those Apples - Riverford Organics Apple Chutney

This chutney is great with cheese or meats but would go equally well with veg dishes like Roasted Celeriac.

- 750g apples (use cookers or eaters depending on your taste buds and availability)
- 1 onion, peeled and chopped
- 250g soft brown sugar (or whatever is in the cupboard)
- 150g raisins
- 1 tsp mustard seed
- 1 tsp ground ginger
- Pinch chilli flakes
- 1/2 tsp salt
- 350 ml cider vinegar



Peel core a slice apples

Place all ingredients in a pan and bring to the boil on a medium heat with the lid on. Turn down low and simmer for around 20 minutes until apples are soft. Remove lid and cook for another 20 minutes, keep stirring! Ladle hot into hot sterilized jars and seal. You could also cook this in a Slow Cooker to save on fuel. Just cook long and slow.

This chutney will keep for 6 months in a cool place away from direct sunlight. Once opened use within 4 weeks and keep in the fridge.

Dates For Your Diary

For the past 3 years, Thoughtful Food have run a series of workshops for new or inexperienced vegetable growers. These are run in Lyminge, and give a great opportunity to get started in your garden with local support and camaraderie!

These 'New Gardener' workshops for 2023 are now **OPEN** for booking. Spaces are allocated on a first-come first-served basis, and are free of charge. Looking forward to welcoming lots of new gardeners to these sessions next year

Sunday 5th February 2023 2-5pm ~ Sunday 26th March 2023 2-5pm ~ Sunday 23rd April 2023 2-5pm

To book your place, please email us on thoughtfulfoodgroup@gmail.com

What's In Season In December

Almost too many to list here, but to name a few, beetroot, sprouts, squash, cabbage, carrots, cauliflower, celeriac, leeks, potatoes, parsnips, horse-radish.....

Great hearty veg, perfect for making entire meals, try roasting celeriac slices in the oven for about 40 minutes tossed in olive oil and seasoned. Or a warming vegetable stew cooked in the slow cooker, make it even more yummy with dumplings made with beef suet or veg suet depending on taste.

Very Best Wishes from Thoughtful Food



Recycling Electrical Material: What is WEEE and why does it matter to me?

WEEE stands for Waste Electrical and Electronic Equipment. This is basically anything that includes a plug or a battery. From large appliances like cookers and washing machines through TVs, computers, microwaves, kettles, hairdryers to toys, mobile phones, chargers and electric toothbrushes. Every year an estimated 2 million tonnes of waste electrical equipment is discarded by households and companies in the UK! It is regulated by the government to ensure as little as possible ends up in landfill or being incinerated. It goes without saying that these items contain many chemicals that are harmful to the environment. Plus many of the components are made up of valuable metals and other materials that can be retrieved and recycled back into other products. There are now lots of companies that focus on this. One of the UK's leading WEEE processing plants is SWEEP Kuusakoski. The Lyminge Climate Action group is hoping to take a "field trip" to visit their site in Sittingbourne in 2023. So if you are curious about recycling and interested in joining us, please get in touch. Kate Bennett (kakellett@yahoo.com)

How we can Recycle Electrical Equipment

So what does this mean to us in Lyminge? Firstly, it means that we need to make sure that we are not putting any electrical items into our household waste - they can't go into our purple recycling bins or into our normal green bins. There are two main ways that you can ensure that your WEEE is correctly disposed of. Number one: take it to your council run household waste centre. Our closest one is in Folkestone on Ross Way at Shorncliffe. Since the pandemic they have been operating an online booking system which is working quite well and it's usually quite easy to get a slot. However, the downside of this new system is that you cannot walk into a household waste site and it relies on you having access to a car to drop items off. For larger items FHDC will run a bulky waste collection service but they do charge for this service. The second option is returning your appliance to the outlet you purchased it from. Many people do not realise that companies are legally obliged to accept and dispose WEEE items if you are buying a new similar item from them. I tried this recently and returned my old defunct laptop to Curry's when I bought a new one. I felt better doing this than taking it to a household waste site because I knew they would also wipe all my data from the laptop before recycling it. If you are in Lyminge with WEEE to recycle but you can't access either of these options please contact us to see if we can help you dispose of it rather than putting it in the regular bin. Kate Bennett (kakellett@yahoo.com)

WEEE recycling: The history

Back in 2003 European legislation came into place setting targets for member states to collect, recover and recycle electronic equipment. The aim was to collect and recycle a minimum of 4kg per head of population by 2009. Now, almost 20 years on, although we are no longer subject to EU directives, these measures are firmly embedded in our waste culture. The Waste Electrical and Electronic Equipment Regulations brought it into UK law in 2013. Producers that import or manufacture electronic equipment have to comply with regulations and make arrangements for collection, recycling, recovery, treatment and environmentally sound disposal of at least a proportion of the electrical equipment they sell.

~~~~~

## Our Wild Acre 2022

Thanks to everyone who participated in the Our Wild Acre project this year, we had slightly fewer respondees than in 2021 but still managed to beat last year's total area allowed to grow wild within private gardens. The 400 square metres dedicated to the project this year will have provided important habitats for many of our local wildlife species, in a year when the summer drought will have put many species under heightened levels of environmental stress. Well done to all involved and let's keep it up next year.



# MUSIC ON A FRIDAY



presents their  
**2022 Christmas Concert**

**FRIDAY 9TH DECEMBER at  
Lyminge Parish Church**

**starting at 7pm**

**Carols, Christmas Songs,  
Mulled Wine and Mince Pies**

**FREE ADMISSION AND  
REFRESHMENTS**

**A great way to start your Christmas festivities**

In aid of the LORD WHISKY SANCTUARY FUND  
(Registered Charity 283483)

Park House Animal Sanctuary, Stelling Minnis CT4 6AN.  
Tel: 01303 862622 www.lordwhisky.co.uk

We would like to sincerely thank our loyal supporters and friends, old and new, who have supported us this year.

Your kindness and generosity have been very much appreciated.

We would also like to thank everyone who has given a loving home to one or more of our animals.

**We wish you all a very Happy Christmas  
and a Peaceful New Year and look forward to seeing you  
all again in 2023**

Don't forget, our Christmas Cards, Puddings and Gifts are available from the Tea Rooms in Rhodes Minnis, our Charity Shop in Hythe or by requesting our mail order form.

In aid of LORD WHISKY SANCTUARY FUND (Charity No 283483)  
Park House Animal Sanctuary  
Stelling Minnis CT4 6AN  
Tel: 01303 862622  
www.lordwhisky.co.uk  
E: lord.whisky@btinternet.com



*The sanctuary has lots of lovely dogs,  
young and older cats, rabbits and guinea pigs  
all needing homes.  
Please call us on 01303 862622 for further details*

**The Lord Whisky Tea Rooms**  
Gate Lane, Rhodes Minnis CT4 6XY  
01303 862349

Open daily from 10am to 4pm  
Delicious breakfasts, lunches, cakes, Cream Teas etc.  
Sunday Roasts (booking advisable)

Bookings are now being taken for Christmas Lunches  
Served daily from 1st - 23rd December  
3 courses £30pp - 2 courses £25pp  
A £10pp non-refundable deposit is required when booking  
For more information or for reservations, ring 01303 862349

POP ME ON THE FRIDGE

**MOBILE  
FISH &  
CHIPS**



**EVERY  
THURSDAY**

**From  
11.45am - 12.45pm**

**Age UK Car Park  
Eat In Cafe  
or Take Away**

  
**age UK**

**STREETZ 2 STREETZ**  
TELEPHONE:

**07955 926 835**

Major Cards Accepted



**AGM  
2023**

**OUR FIRST EVENT OF 2023  
WILL BE THE AGM ON  
17<sup>th</sup> JANUARY**

**VENUE TO BE CONFIRMED  
NEXT MONTH**

  
**Seasons  
Greetings**

For general information about the Gardeners' Society:

Email [lymingegardeners@gmail.com](mailto:lymingegardeners@gmail.com)  
or call Anne on 07703 149008

**Freshly Prepared  
Breakfasts & Light Lunches  
Home Baked Cakes  
Vintage Afternoon Teas  
Coffees  
Teas**  
**Takeaway Available  
Private Functions**

Open Tuesday to Saturday  
9am to 3pm  
Dog Friendly

THE COFFEE CABIN TEA ROOM LTD.  
CANTERBURY ROAD, LYMINGE, KENT.  
CT18 8HU. 01303 864222  
Instagram @thecoffeecabintearoomltd  
Find us on Google Maps

# Elham Christmas Food & Craft Festival

Sunday 11am - 2pm  
11 December Elham Square & Church


Santa  in his vintage shepherd's hut,  
elves, donkeys, presents for children

**30+ stalls** selling  
delicious festive food  
and gorgeous gifts

**Raffle** in aid of local food bank

**Refreshments**  
Mulled wine - Hot chestnuts - Chancel Café

*We hope to see you there!*

[elhamfarmersmarket.co.uk](http://elhamfarmersmarket.co.uk)  
For information: Julie Woodgate 07756 087935  
 [facebook.com/elhamfarmersmarket](https://facebook.com/elhamfarmersmarket)



## SUBSECTOR Become a digital business

Your small company is having to  
*do more with less*

Becoming a digital business can  
*save you time and money*

Escape tedious admin by  
*automating repetitive tasks*

Find out more and book a free consultation at  
**[subsector.co](http://subsector.co)**

Don't be led up  
the garden path...

...choose an agent  
that gives straight  
forward, honest advice.

Call today for a free, no obligation valuation

Bridge Office - 01227 831999  
[bridge@colebrooksturrock.com](mailto:bridge@colebrooksturrock.com)  
88 High Street, Bridge, CT4 5LB

Elham Office - 01303 840422  
[elham@colebrooksturrock.com](mailto:elham@colebrooksturrock.com)  
Bank Buildings, Elham, CT4 6TD

[colebrooksturrock.com](http://colebrooksturrock.com)





# Lyminge Baby and Toddler Group

Tuesdays 10am to 12pm  
(term time only)

Tayne Centre, Church Road

Bring your little ones along to our friendly group for lots of fun including toys, crafts, playdough, ride ons and lots more.

£2.50 per family, including refreshments for all.



If you have any questions please contact Ellen on 07870 40567

## Garden Safari 2023

Many people in the area have asked for a **Spring Garden Safari**. So next year it will take place on **20th and 21st May** as part of the **Coronation Lyminge Festival**.

We would love to see some new gardens, as well as the regulars, included in 2023.

If you have any questions regarding the Safari please give me a call:

**Ray Smith 01303 863856**



## BADGERS BRIDGE NURSERY

*" Bridging the indoor and outdoor learning environment for children in their Early Years"*

Badgers Bridge is set in the idyllic countryside of Postling, just outside Lyminge. We are a small and friendly Preschool who blend the Montessori principles with the outdoor learning ethos.



We were awarded Outstanding by Ofsted in 2018 in every area. This is a real achievement and we are really proud of the staff who work tirelessly to provide a stimulating and caring environment for the children of Badgers Bridge.

The inspector was particularly impressed with our Forest School. *"Children enjoy limitless opportunities to explore, investigate and work together in the natural woodland environment. Staff skilfully inspire children to develop a significant understanding of the world in which they live".*

*".....exemplary relationships between staff provide excellent role models for children and promote high standards of behaviour. Children make outstanding progress during their time at the nursery".*

**Exciting news! We have opened our new setting in Elham. We offer the same unique outdoor experiences for children from 20 months old. Come along and see us at The Gore!"** So please call or email us:.

Email : [badgersbridge@gmail.co.uk](mailto:badgersbridge@gmail.co.uk)

Website : [www.badgersbridge.co.uk](http://www.badgersbridge.co.uk)

Tel : 01303 862951

**Postling Village Hall, The Street, Postling CT21 4EU**

Ofsted Registered : 395128

Companies House Reg : OC375571

Based at Lyminge Village Hall

## LYMINGE Pre-school

Every Day Adventures at our **OUTSTANDING** pre-school

COUNTRYSIDE SETTING  
QUALIFIED &  
LONGSTANDING TEAM  
WRAP AROUND CARE  
8-6PM DAILY

PARENT PORTAL  
HOLIDAY CLUB  
OUTSIDE OF TERM TIME  
FANTASTIC FACILITIES  
& GARDENS

Early Years Education & Day Care for Children Aged 2-5. Rated **OUTSTANDING** by OFSTED 2022.

WE'D LOVE TO HEAR FROM YOU

01303 863149 ✉ [LYMINGEPRESCHOOL@GMAIL.COM](mailto:LYMINGEPRESCHOOL@GMAIL.COM)

Editor: [pbarnes20@icloud.com](mailto:pbarnes20@icloud.com)

## Etchinghill Baby & Toddler GROUP

10.15-11.30am every Wednesday  
at Etchinghill Village Hall  
£2.50 per child

Come along to Etchinghill's Parent and Toddler group welcoming children from 0-3. We have plenty of toys and snacks for the little ones, and there is always tea coffee and cakes for the adults. For further information call Chrissy on 07811682045 or Ruth on 07817777975, look at Parent and Child Etchinghill Facebook page or email us as [parentandchildetchinghill@gmail.com](mailto:parentandchildetchinghill@gmail.com).





## With our excellent local knowledge & experienced staff we will get you moving

- ✓ Free professional photography, property floorplan, Rightmove premium listing & social media advertising

**01303 863393**

The Estate Office,  
8 Station Road,  
Lyminge,  
Kent CT18 8HP

Follow us on  
social media



[www.laingbennett.co.uk](http://www.laingbennett.co.uk)

## The Lyminge Association

*We're here to support and develop our community!!*

### Contacts:

**Chair:** Nancy Benham 01303 863076 or 07840796383  
nancybenham@aol.com

**Vice Chair:** Peter Barnes 01303 863737 or 07808775302  
pbarnes20@icloud.com

**Treasurer:** Martin Fry 01303 863177  
martin@Rhodesminnis.org.uk

**Committee Members:** Adrian Willcox, Marian Chubb, Richard Chubb, Dave Hunt-Cooke, Gillian Heywood, Robin Macknochie, Derek Smith, Ray Smith, Penny Stephens

**Newsletter:** As for Peter Barnes above

## ETCHINGHILL VILLAGE HALL HIRE FEES

The next time you are thinking of holding a function why not try Etchinghill Village Hall, which holds the highest Hallmark accreditation level (Hallmark 3), with its excellent facilities, including ample parking space.

The standard hire charge for the main hall and kitchen are:

ANY DAY OF THE WEEK' ANY TIME £12 PER HOUR

No winter supplements. No extra charges.

Ideal for family parties and get togethers.

The use of a separate Committee Room is also available.

For all bookings or enquiries please contact:

**The Duty Manager on 07514 758936**



**Large hall with stage, new kitchen and flexible hire**

Excellent parking facilities, disabled access, proximity to playgrounds and playing fields. Beautiful countryside location.

### Capacity:

200 people dancing / audience seating, 100 with tables  
Small rooms available for up to 50 seated

Find out how we can help you with your next event:

**BOOK ONLINE:** [lymingevillagehall.org.uk](http://lymingevillagehall.org.uk)

**EMAIL:** [admin@lymingevillagehall.org.uk](mailto:admin@lymingevillagehall.org.uk)

**INFO:** 07525 909185

Full pricing can be found on our website.

### Guideline prices:

Main Hall hire: £88.40 (Fri / Sat evenings)

£47.60 (Sat / Sun morning or afternoon)

Find us on Facebook

Registered charity 28145

## Rhodes Minnis Village Hall

Charity No.800345

Rhodes Minnis Village Hall is located 2kms (1¼miles) from Lyminge and just off Longage Hill and Whitehorse Lane in Chapel Lane.

The hall, which holds Hallmark accreditation, is ideal for children's parties, band practice, quizzes, meetings, wedding receptions, fundraising events and much more. It has a fully equipped kitchen.

### Rates

Mon to Fri £18 per session £48 all day

Sat & Sun £23 per session

£33 for evening session and £69 all day

### Sessions

AM session 08.30 - 12.30

PM session 13.30 - 17.30

Evening session 18.00 - 23.45

Separate rates for Bank Holidays and New Year and special rates for regular users.

For all bookings and enquiries please contact:

**Mick & Dorothy Athow: 01303 862616**

**e-mail: [booking-rmvh@outlook.com](mailto:booking-rmvh@outlook.com)**

## TAYNE CENTRE

### HALL HIRE

*Previously known as the Lyminge Methodist Church Hall*

**Clayson Hall:** £15 per hour

**Rigden Room:** £10 per hour

**Wesley Room:** £10 per hour

**Church:** £20 per hour

### Enquiries:

**Tel: 07716 521 405**

**Email: [maryeblanch@outlook.com](mailto:maryeblanch@outlook.com)**



## Lyminge Library Opening Times

Monday 10am - 2pm

Tuesday 12noon - 5pm

Wednesday 10am - 2pm

Thursday 10am - 5pm

Friday 10am - 2pm

Saturday 9am - 1pm

**Tel: 03000413131 [lymingelibrary@kent.gov.uk](mailto:lymingelibrary@kent.gov.uk)**

# HYTHE AQUA SWIM SCHOOL

We have space available for Lengths/Improvers for Expanded Learn to Swim Scheme (Swim England LTS Level 4+)

*Due to the expansion of our successful (nationally accredited) Swimschool at Hythe Aqua we currently have immediate vacancies for lengths and intermediate level swimmers*

**Club Secretary:** 01303 862353

family.parris13@btinternet.com www.hytheaqua.org.uk



**CIAT**  
Registered Practice  
Chartered Institute of Architectural Technologists

**DAVID HAIME**

ARCHITECTURAL TECHNOLOGIST  
BUILDING TECHNICAL DESIGN  
AND CONSTRUCTION DRAWING  
SERVICES.  
PROJECT MANAGEMENT

BUILDING PLANS FROM PORCH TO NEW BUILD.  
PLANNING/BUILDING CONTROL/STRUCTURAL CALCS.  
COVERING KENT/SUSSEX/SURREY.

LYMINGE, KENT CT18 8HA  
TEL: +44 7974 156510  
EMAIL: D.HAIME@BTINTERNET.COM



## bus times

for buses from Lyminge **The Sidings** to Folkestone town centre via Etchinghill & Cheriton High Street

MONDAYS TO SATURDAYS except Bank Holidays

There are route 17 buses at 0705 (not Saturdays), 0749, 0909, 0934 (not Saturdays), 1004, 1034, 1104, 1204, 1304, 1404, 1514, 1614, 1619 (schooldays only), 1654 (schooldays only), 1719, 1749, 1834, 1929, 2113 and 2313.

There are also route 18 buses to Sandling Station & Hythe - for times see our website or call the number below.

SUNDAYS & BANK HOLIDAYS

There are route 17 buses at 1032, 1302, 1532 and 1802.

for buses from Lyminge **Wesley Terrace** to Canterbury city centre via Elham, Barham & Bridge

MONDAYS TO SATURDAYS except Bank Holidays

There are route 17 buses at 0727 (schooldays only), 0732, 0752, 0903, 0938, 1028, 1128, 1235 (1228 on Saturdays), 1335, 1443, 1608 (1613 on Saturdays), 1703, 1803, 2001 and 2201.

There are also route 18 buses to Canterbury via Stelling Minnis and Bosingham - for times see our website or call the number below.

SUNDAYS & BANK HOLIDAYS

There are route 17 buses at 0903, 1133, 1403, and 1633.

These bus times will operate from 28 October 2018.



On mobile • Online • On board

03456 00 22 99 @StagecoachSE  
southeast.enquiries@stagecoachbus.com  
stagecoachbus.com

## SNIPPERS & CLIPPERS UNISEX HAIR SALON

APPOINTMENT NOT ALWAYS NEEDED

WEDDINGS & SPECIAL OCCASIONS

SHELLAC NAILS

FREE WIFI

GENTS WELCOME

4 Station Road, Lyminge  
Folkestone  
Kent, CT18 8HP

01303 647 222

info@snippersandclippers.co.uk

Find us on  
Google+

Find us on  
facebook

Editor: pbarnes20@icloud.com

21

Tel: 01303 863737

## Park House Sanctuary Boarding Kennels & Cattery

Park House, Stelling Minnis  
CT4 6AN

Brick-Built Heated Kennels  
Daily Walks ~ Reasonable  
Rates Dogs must be fully  
inoculated

Heated Cat Chalets  
Quiet Area Inspection Invited.

To book or for further  
information, call  
01303 862622

or email  
lord.whisky@btinternet.com  
www.lordwhisky.co.uk



**GEORGE  
MILLER**

BOILER & HEATING ENGINEERS

- Gas & Oil Boilers
- Central Heating
- Hot Water Systems

01303 901070

service@georgemiller.co.uk

248 Cheriton Road,  
Folkestone, CT19 4DN



georgemiller.co.uk



**Anna's Animal  
Physiotherapy**

For dogs, cats & small pets

- Offering physiotherapy assessment and treatment of dogs, cats and small animals.
- I use a combination of manual therapy, laser, ultrasound therapy, TENS, kinesiology tape and exercises to rehabilitate your/their pet depending on the needs. I also address environmental and exercise factors that can help your pet with their condition.
- I now have a **NEW** treatment room where I can offer further assessment of your pet using a stance analyser. This identifies the mildest of lameness and addresses areas of compensation. I also offer home visits. Physiotherapy can help with arthritis and the ageing pet, post operative orthopaedic surgery, neurological, spinal conditions and many more conditions.
- I am fully insured with over 15 yrs experience working with animals. I am a member of the International Association of Animal Therapists (IAAT).
- For more information please visit my website:  
annasanimalphysio.co.uk or feel free to contact me on  
07944 606453 or anna@annasanimalphysio.co.uk



## Snippers and Clippers Barbers - Lyminge

Please call Richard for availability (appointment necessary) on 07522 494969  
Thank you for your continued support

4 Station Road, Lyminge CT18 8HP

Follow us on **facebook** for offers

## Andy Mannering Flooring

SPECIALISING IN AMTICO AND KARNDEAN LUXURY VINYL TILES



- Also safety flooring, rubber flooring, etc.
- Commercial and domestic work undertaken
- No job too small
- Free estimates and advice given
- Over 35 years experience
- Fully insured

**Telephone:** 0797 434 7248 or 01303 863095

**Email:** info@andymanneringflooring.com

Please visit my website for further information and feedback  
**www.andymanneringflooring.com**



## DILTON MINI SKIP HIRE

Ballast, Hardcore, Sand and Topsoil Supplied  
REGISTERED WASTE CARRIER

**01303 812448 or 07799 433754**

## Red Dragon I.T. Ltd.



- Windows, Mac & Linux Systems
- PC Health Checks
- Wired & Wireless Networks
- Website Design
- Graphic Design

T: 01303 723456 | E: info@rdit.co.uk | www.rdit.co.uk  
The Old Granary, Hanover Mill, Church Rd, Mersham, TN25 6NU

## Rhodes Minnis Cat Sanctuary



REHOMING & BOARDING CATTERY

- Our Sanctuary takes in and rehomes 250 unwanted cats and kittens each year. A variety of cats are always available to suitable homes.
- 5\* Boarding Cattery under 2018 regulations
- We are open to visitors every day from 10-1 & 2-4. No appointment necessary.

T: 01303 862 243  
E: rminniscats@gmail.com  
Facebook: @rhodesminniscats  
www.rhodesminnis.co.uk

Seathwaite, Green Lane, Rhodes Minnis, Kent. CT4 6XU  
Reg. Charity No. 262245



*'Helping you enjoy your garden'*

## CRT Gardening

All general garden work undertaken including: garden design, hard and soft landscaping, new fencing installation and repairs, decking installation, hedge trimming and cutting, fruit and vegetable garden work, small to medium tree work. For a free quotation call either Karl Dodd 07967 442518 Katie Dodd 07966 301978 or email karl.dodd@live.co.uk katie.dodd@live.co.uk

Fully Insured



Hawkinge

## Veterinary Surgery

Independently owned veterinary surgery for all types of small animals.  
Opening hours: Monday to Friday 08:00-19:00 Saturday 08:30-13:00  
24hour emergency service

**TEL: 01303 764190**

Hawkinge Veterinary Surgery, 9b Defiant Close, Hawkinge CT18 7SU  
www.hawkingevetsurgery.co.uk



**ROBERT KENT** Cert. fp  
FUNERAL DIRECTOR

**Direct Cremation**

**£999**

**Fair Priced Cremation**

**£1950**

**ONE FIXED PRICE INCLUDING ALL CREMATION FEES**

**01303 684062**

**RKFUNERALS.COM**

## SCRUBBERS - Est. 1988

THE HOME AND COMMERCIAL CLEANERS

One off, regular or moving day 'Blitz'

Oven cleaning - Ironing

Carpet cleaning and more...

For a friendly and reliable service

Free Estimates

**Tel: 01303 249288 or 07834 128671**

## Computer support & repairs by local people

*Customer service is our priority*

- \*Remote IT support for business or home
- \*New & refurbished sales
- \*Call-outs for business or domestic users
- \*Preventative maintenance & upgrades
- \*Repairs to most phones, tablets & devices

enquiries@thecomputerpeopleltd.co.uk



Church Approach,  
New Romney,  
TN28 8AS  
01797 363385



**Acrise Electrical Services Limited**

**Design - Install - Maintain**

Tel: 01303 656007 Mob: 07803 421240

Email: info@acrise-electrical.co.uk

Website: acrise-electrical.co.uk

*Domestic, commercial, industrial & agricultural electricians serving the Elham Valley and surroundings.*

## Tressenden Designs

A seamstress and costume maker with 8 years of experience.

- ♦ Clothing alterations ♦ Repair work undertaken ♦ Made-to-measure; create a bespoke piece for those special occasions
- ♦ Modern and vintage designs ♦ Costumes, ball gowns and wedding dresses

For more information or a quote please contact Amy on: **Mobile: 07853 202304 Email: amy.louise.ford@hotmail.co.uk**





**APX PROJECT  
MANAGEMENT**

From design to build, we use trusted quality trade professionals along with reliable suppliers to ensure budgets are met, with high standards maintained. If you're looking to -

- Extend your property
- Carry out an external or internal refurbishment
- Convert an existing building into a new dwelling

Please contact: paul@apxprojectmanagement.co.uk 07487 364155



**Dennis Huntley  
Chimney Sweep**



Wood burners and multifuel stoves installed  
Hearths and fireplaces built & installed  
Over 40 years' experience

**01303 862 343 • 07850 784 365**

dennis.huntley@talktalk.net www.dennishuntley.co.uk



## Auto Economy Centre

**Fully equipped Mechanical Repair & Service Centre**

**With the latest diagnostic equipment**

**Half price MOTs when booked with any service**

**01303 863656**

**Orchard Garage, Canterbury Rd, Etchinghill**

**www.autoeconomycentre.com**

## AIR LINK CARS

(You pack up, we pick up)

Airport, Seaport & Long Distance Travel Specialists.

The Family Run Business where service really counts

Estate cars and People Carriers



Fixed price 24hrs a day. No extras.

Written Confirmation of booking.

For the Easy Airport Link, Think AIR LINK!

**01303 670370 - 07766 824 474**

airlinkcars@yahoo.com

**Gosbee  
LANDSCAPES**

FENCING | GATES | PAVING | RESIN BONDING

- Over 35 years experience • Jacksons Approved Installer
- Marshalls approved • Check-a-trade registered

Call Martin Gosbee: 07974 835 511 | 01303 863 337

GOSBEECONSTRUCTION@GMAIL.COM  
GOSBEE.CO.UK



## Sunhouse Electrical

Your local reliable Electrician

Part P Registered & Elecsa Approved

On Electrical Safety Register & Fully Insured

For a free quotation call James on

**01303 766333**

**www.sunhouse-electrical.com**



**KW CONSTRUCTION**  
PLASTERING & RENDERING SPECIALIST

ALL GENERAL BUILDING INCLUDING:  
ROOFING, BRICKWORK, TILING, PATIOS,  
LANDSCAPING, SCREEDING, GROUNDWORK,  
DRAINAGE, EXTENSIONS, RENOVATIONS,  
REPAIRS & MAINTENANCE.

30 YEARS EXPERIENCE, COMPETITIVE RATES,  
A FULLY INSURED, PROMPT & RELIABLE  
HIGH QUALITY LOCAL BUILDER

KENNY 07743488361

**HANDYMAN  
SERVICES**  
SJW

www.Facebook.com/sjwoodhandyman  
www.Instagram.com/sjw.handymanservices  
**07796 384857**

## LYMINGE FOOD & WINE

**01303 862225**



Our new opening times are:

Mon – Sat **7:00-20:00**

Sunday & Bank Holidays

**8:00 - 19:00**

PayPoint

**POST  
OFFICE**



We offer National Lottery, ATM terminal,  
Post Office & PayPoint services.



**AK Healthcare**

Tel: 07904311554 /  
07980897382

www.akhealthcare.org.uk

We help patients suffering from a wide variety of conditions including arthritic pain, circulatory problems, frozen shoulder, back pain, sciatica and much more.

Please visit our website or give us a call for more information.

**AK Healthcare,**

**Garden Suite,**

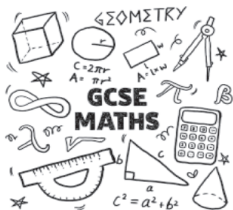
**4 Station Road, Lympinge**

## GCSE MATHS TUITION

Spaces available for students in year 9, 10 and 11.

I am an experienced teacher based in Lympinge, able to cover all levels of abilities. I have always enjoyed tutoring and watching my students grow in not only their ability but also their confidence.

For more information, please call Sam on  
07790 348185



## South East Aerial & Satellite Solutions

**Digital – Freeview – Satellite – Aerials**

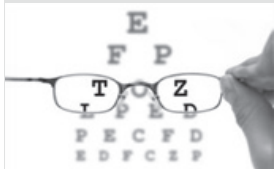
Supply and fit of quality digital installations, FREEVIEW, SKY, aerials, poor reception and problem solving, upgrades and repairs by fully accredited engineers

Free quotations and advice, fixed prices, fully insured

**Freeview**

**NO CALL-OUT CHARGE**

**07825 168010 - 01303 862361**



## HOME VISITING OPTOMETRIST - providing professional eye care in your home

If you are over 60 years of age and no longer able to get out on your own, then you are eligible for a NHS sight test in your own home. Please call to arrange an appointment:

**Elaine Edwards BSc(Hons)MCOptom 01303 840541**

Registered with the General Optical Council (01-15421) Member of the College of Optometrists Member of the Association of Optometrists

## D.M.B. Plastering

All aspects undertaken  
*Interior. Exterior. Plastering. Rendering.  
Coving. Ceilings. Wall. Floors  
Finest quality assured. CSCS Certified.*  
30 years experience.

Free estimates. Reliable service. Fully insured.  
Call **David** on **07818 607209**



Forest Lodge  
Counselling & Therapy

### Need to talk?

Confidential and compassionate  
qualified counsellor here to listen.  
Please call or text Natasha on 07593 794321  
All messages replied to  
Email: forestlodgetherapy@gmail.com  
www.forestlodgethecounselling.com



FILEHURST ASSOCIATES

## YOUR COMPLETE REMOVALS AND STORAGE SOLUTION

☎ **01303 239990**    ✉ **info@filehurst.co.uk**

Domestic & Business Removals - UK wide & France  
Business Document Storage

Call Nick for a no-obligation quote.

## B.M. Plumbing & Maintenance Services

Local Lyminge Tradesman

Plumbing and heating works. Complete bathroom  
install including tiling. General building maintenance  
undertaken. No job too big. No job too small.

Cheaper rates for senior citizens



**07890854128 Benmillsplumbing@hotmail.co.uk**

## KJB GARDEN SERVICES

Weeding, Pruning, Mowing, Hedge  
Cutting & General Maintenance  
**01303 862181** or **07704 989 402**  
Over 35 years experience

## JON DAUGHTERS - Local Builder

All aspects of general building works undertaken including:  
roofing, kitchens, bathrooms and small extensions

**Trading for over 30 years**

**Free quotes, no obligations, fully insured**

**Telephone: 01303 863371**

**Email: daughters777@hotmail.co.uk**

House Clearance covering South East Kent.....and beyond!

## CAROL CREES CLEARANCES



- Est. over 30 years  
Full/part house clearance  
Fair prices paid  
Antique/Vintage/Retro/Modern  
Registered rubbish carrier

Contact **Simon Cullen** on **07745 421680** or **sijnzo@aol.com**



www.eastkentfootcare.co.uk

**07745 532075**

**Podiatry, Chiropody,  
Foot Health**

Treating and managing foot  
and nail conditions, corns,  
callus, insoles, ingrown nails,  
diabetic foot care



Total garden care for all your needs

## TIM MILLETT

Grass Maintenance, General Gardening, Small & Medium  
Size Tree Work, Stump Grinding and Wood chipping  
Fencing Repairs & New Installations  
Turving, Hard & Soft Landscaping

Free Estimates - Fully Insured

**01303 863676**    **07752 880583**

Email: **info@tmhorticulture.co.uk**

## N.P.C.

**Domestic Appliance Services**

*Service and repair of washing machines, tumble driers,  
dishwashers, cleaners and small electrical work.  
For a prompt and friendly service*

Call Neil Collard 01303 892234 or 07798716044  
or Google me on Yell.com



## Your Local Electrician For all your electrical needs

- 18th Edition/Part P Registered
  - Insured & all work guaranteed
  - All electrical work carried out including EV charging points
  - Covering Lyminge, Etchingill & surrounding villages
- Call for a free, no obligation quote and to discuss your  
electrical requirements.



**07878 457018**

**01303 814372**

**info@hughes-electrical.co.uk** **www.hughes-electrical.co.uk**

**To advertise in this space, please contact**

**Peter Barnes**

**pbarnes20@icloud.com 01303863737 07808775302**





# T. M. GRIGGS



01303 489795 07854 098395  
tobystreesurgery@gmail.com

**Garden Clearance - Turfing - Hedge Cutting  
Tree Work - Stump Grinding - Fence Repair**

## DYNO-ROD



We've been  
unblocking  
sinks, drains  
& toilets  
in Kent  
since 1965

- Quick Response
- CCTV Drain Inspections
- Drainage Repairs
- Pre-purchase Surveys

For a FREE no obligation quote  
contact Mark or Peter on:

**01233 621108  
07557 616630**

## FRESHLOOK GARDENS

Regular lawn mowing service. Garden design. Hard and soft landscaping. General garden work, fencing and decking. Turfing hedge cutting, small and medium tree work. Water features, ponds and patios.

For free quotation ring **Danny Scott**  
**01303 242140** or **07795510093**  
**mrdanscott89@gmail.com**

Established since 1990. Fully insured.

# THE HANDY FELLOW



**A TRUSTED LOCAL SERVICE  
CALL 07534485049**

## Computer Repairs

01303 241325  
07968 129902

PCs, MACs, Laptops, Tablets & printers,  
Upgrades & Repairs, Internet & Email, virus removal,  
Office Setup, Backup & Recovery & much more ...  
Tuition available by a qualified tutor.

Usual Fee **£55**

Web sites built & hosted from £10 per month

See [www.computers-in-lyminge.co.uk](http://www.computers-in-lyminge.co.uk) for details



## Alan Croucher Caravan Engineer

**07921 480919 - 01303 863194**  
Caravans & Motorhomes "WE COME TO YOU"  
[www.arcmobilecaravanservices.com](http://www.arcmobilecaravanservices.com)

"Your manufacturer's warranty is safe in our hands"



Local Tradesman

## J Tappenden

Established over 40 years ago

Painter/Decorator

**01303 862467  
077755 78008**



## A. J. Athow

**BUILDER & DECORATOR  
GENERAL MAINTENANCE**

Telephone: 01303 862616

Mobile: 07541 792238

Email: [tony@athow.co.uk](mailto:tony@athow.co.uk)

## Jackson Plumbing Property Maintenance

Complete bathrooms and tiling  
No job too small. Special rates for OAP's.

Telephone: home/evening **01303 270691**  
or daytime **07773 089398** or **07864 929826**

## Trevor Law Electrical Installations

Serving Elham Valley for 30 years  
Part P Registered

**07850 970087**



## Ralph Allard Chimney Sweep



All chimneys, boilers and stoves swept.  
Brush and Vacuum. Certificates issued.  
HETAS and NACS registered, fully insured.  
Member of National Association of Chimney Sweeps

**01303 844465** or **07813716654**



## JBS BUILDERS

Specialising in Driveways, Brickwork, Patios, Fencing, Landscape Gardening. Tree work undertaken (lopping, felling and clearing).

General household repairs, painting, plastering, power jetting & cleaning.

No job too small!!! All work guaranteed and insured.

**For free advice and quotations please call: 07825 168010/ 01303862361** (anytime)



## Financial Planning

**David Gridley - Chartered Financial Planner**

Range of quality advice from a fully qualified adviser:

- Pre- and Post-Retirement Planning
- Investment Planning
- Inheritance Tax Planning

For further information, please contact our Lyminge office

David Gridley FPFS

Tel: 01303 863959 Email: davidgridley@sjpp.co.uk

**MWH**

Window and gutter cleaning service

**Mark Haley**



Lyminge and surrounding areas

For a free no obligation quote, please contact me

Mobile: 07738 479202

Home: 01303 863 702 Email: haleymark161@gmail.com

Find us also on Facebook

**Ashman Consulting Ltd**



**Straightforward I.T.**

**Advice  
Training  
Solutions  
Support**

**Steve Ashman  
07702641981**

**info@ashman-consulting.co.uk**

**T. Metcalfe Fencing Contractors**

Approved Expert Installer for Jacksons Fencing  
Established over 30 years  
Fully insured - Highly experienced teams



Panel fencing, gates, decking, pergolas, post & rail,  
stock fencing, security, landscaping & tree surgery.

**01303 840201 07790 290 155**

metcalfefencing@btinternet.com

Proprietor - Derek Burr,  
Ash Ridge House, Elham



## Fincham Plumbing & Heating

Gas Safe, CIPHE, WIAPS registered

Qualified Plumber / Gas Engineer with over 30 years experience

**Rosemary and Martin Fincham**

**07835 851 706 martinfincham@sky.com**

Specialising in complete bathroom remodelling, including all tiling & pipework  
Natural gas boiler servicing, Installation, Maintenance, Repairs, Replacement  
All your plumbing requirements



**Lou Lloyd  
Carpenter**

**loulloyd@rocketmail.com  
07984 426214**

**Kitchens, Flooring, Wardrobes,  
Doors, Decking and more!**

**HAND MADE CURTAINS,  
ROMAN BLINDS & SOFT  
FURNISHING**

**CURTAIN ALTERATIONS**

**TEL: VALERY WREN 01303 237755**



**D & S DOUBLE GLAZING SERVICES**

01303 863689 - 07912317915

We are a local company that specialise in double glazing repairs offering a wide range of services that include: Replacement double glazed units - Locks - Hinges - Handles - Rubber Seals - Gaskets.

For a free estimate please call: 07912317915 or 01303 863689  
or email: dsdoubleglazingservices@gmail.com



**CEDAR TREE CARE** City & Guilds

All types of tree work undertaken

NPTC

Crown lifting, crown reductions,

dismantling and removals, hedge maintenance,

pollarding, stump grinding and removal, mobile saw milling,

wood land maintenance, all year round seasoned logs available

Fully insured and NPTC qualified with over 15 years experience

Call Tom: 07769 908027 email: linchlot5@gmail.com

**SPEARPOINT  
TREE SERVICES**

All Aspects of Tree Work Undertaken  
NPTC Qualified  
Fully Insured  
Please call **Shane** for a Free Quote  
**07963 203564** or  
**01303 621992**



**Sarah de Rougemont**

Craftsman/Co-ordinator

**UPHOLSTERY**

All commissions considered  
01227 455841 or 07973 377817



FULLY INSURED

## Elham Dog Training Club

Dog training and Pet care services

- Puppies from 12 weeks old
- Kennel Club Good Citizen Dog Scheme Puppy through to Gold
- 1-2-1 home-based puppy training also available
- Other pet care, dog walking and day cover available
- Other fun classes available - ask for details

Lyn Fagg 07866 234820

Email: Elhamdtc@gmail.com



FULLY INSURED

# Out & About..

Do you have any photos of local events or groups in action? If so can you please forward them along with a few words to [pbarnes20@icloud.com](mailto:pbarnes20@icloud.com)



## Remembrance Sunday

Being celebrated with wreath laying and the Reveille at the Lyminge War Memorial and a tribute outside the Lyminge Methodist church.



## Afternoon Tea as a Thank You

The deliverers of the local Lyminge Newsletter were recently treated to a very posh tea as a thank-you for all their hard work throughout the year. It isn't easy lugging dozens of copies up and down drives and in all weathers. They are now able to talk for 30 minutes on the different types of letterboxes that can be found in the Lyminge area!! Age UK, Lyminge provided the wonderful afternoon tea. There were copious cups of tea and lovely cakes which proved to be quintessentially English, using their bone-china crockery and cake stands.



## LYMINGE THEN AND NOW

This is the first of what we hope will be a regular feature provided by the Lyminge Historical Society in which we will learn a little more about our historic community. The intention is to provide pairs of photographs showing how some well-known local views have changed, or perhaps how they have not changed very much, over the past 100 years or so.



These views show the corner in Lyminge where Station Road meets Canterbury Road. The older picture dates to around 1904 when the station (now the Library) was still very much in use by the Elham Valley Railway. The Cyclist's Rest on the left was a popular tearoom, with a tea garden behind, catering for the many day trippers at that time who visited Lyminge by train as well as by bike.



## Lyminge Bowls 2022 Trophy Winners

Following the club's recent AGM, the annual trophies and shields were presented to the following:

### From L to R

- Paul Jarvis - Runner-up, Singles
- Lynne Lee - Winner, Singles
- Dave Hicks - Joint Winner, Doubles
- Terry Long - Joint Winner, Doubles
- Rita Cleaver - Runner-up, Doubles
- Pauline Bradburn - Runner-up, Doubles



## Annual Stream Clean

Volunteers helping in the annual **Stream Clean** under the guidance of local ecologists.

Each year, a team help remove some excess weed from the Nailborne to help improve the flow rate and reduce local flooding.

