

# THE LYMINGE NEWSLETTER

For the communities of LYMINGE, ETCHINGHILL, RHODES MINNIS and POSTLING

Produced by  
THE LYMINGE ASSOCIATION  
[www.lyminge.org.uk](http://www.lyminge.org.uk)

**May 2023**  
**From The Lyminge Association**



With the Coronation just around the corner, all the local plans and celebrations are beginning to take shape.

By the time you receive your copy of the newsletter, the main road through Lyminge will be lined with Union flags. We would be very grateful if you add your own bunting to the decorations to help make this a celebration to be remembered.

The programme of activities extends over a number of weeks starting with the Guides and Brownies 'Dressing the Well' in Tayne Field on 4th May followed on the 5th by 'Music On Friday BBQ' and a 'Family Celebration of the Coronation' in Etchinghill Village Hall on Monday 8th May.

The Lyminge Association took the deliberate decision to host a Coronation Festival the week after the Coronation to avoid any conflict with other events, including the ceremony itself. This has culminated in a very extensive programme of events and activities starting on 12th May and running through to the 21st.

Through this programme, we anticipate in engaging with all ages either through bouncy castles, quizzes, live bands (there's a return of Queen Tribute Band and your local band The Undecided among others), fun dog show, concerts, garden safari, flower festival and beer festival. We really hope we've captured everybody's imagination and you will find at least one event that you will join in with and enjoy.

**A full programme is printed on P5 of this newsletter and it is supplemented with more detailed individual posters relating to specific events on the following pages.**

This programme has been put together under the chairmanship of Nancy Benham and Dave Hunt-Cooke, supported by the Lyminge Association committee and others. We are very grateful for the time and energy they have put into it. Funding it has been made possible through a grant from Lyminge Parish Council along with the support from The Lyminge Association.

Finally, please forward any photographs taken at any Coronation events to the Editor for inclusion in future editions.

**Lyminge**  
**Coronation**  
**Festival**

# Margaret Saunders' Meanderings

Sunny days had been in short supply recently, so due to the nature of the tides, my trip to the Warren was dictated more by the state of them than the weather, which is why I ended up there on a wet and windy day. My main reason for being there was to collect sea glass with a friend, who uses the frosted finds for craft work. The Warren is classified as a Site of Special Scientific Interest and is one of Britain's most important sites for wildlife. In the past it was a popular Edwardian beach, with cafés and its own railway station. It's bedrock is Lower Greensand and Gault clay with chalk cliffs to the rear, the rocks having been formed between 122-90 million years ago.



We have been here twice recently, the first time on a sunnier day approaching the beach from near the East Cliff Pavilion, slipping and sliding down a winding muddy track, weaving its way through tangles of brambles. This gradually opened out into a wooded area littered with the remnants of old buildings, before finally reaching the beach. It was a transformation. The bay bears no resemblance to the coastline on either side, which is comprised largely of tan coloured pebbles of no particular distinction. Here, once over the initial jumble of rocks, there was a large stretch of sand, dotted with sea-rounded rocks forming little rockpools where the retreating tide had swirled around and scoured out small hollows. Rivulets of water had cut their way through the

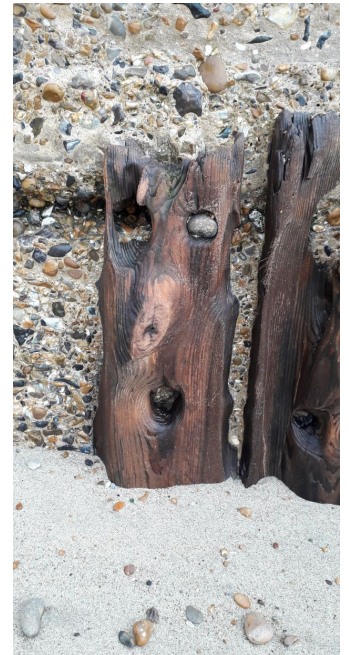
sand as it drained seawards. Rocks with strange indentations were strewn here and there, one looking as if it had a shell impression.

Wild and beautiful, the bay stretched out around us, the breaking waves far away as it was the lowest point of the tide. Narrow and sinewy bands of fine shingle overlaid the sand and it was here that we found the sea glass, tiny shells and smoothed shards of pottery and china, evidence of past lives lived long ago.

Our second visit was wet and windy and we knew the track we had taken before would be too muddy and slippery to negotiate, so we took a metalled road then a set of steps which zig-zagged its way down the steep approach to the beach, bringing us this time to the Dover side of the bay. Mist was rolling along



the cliff top at Capel and a fine salt spray filled the air, blown into our faces by the strong gusts of wind. Man's influence on this part of the bay was everywhere, in the form of concrete hard standing and huge concrete groynes, at the foot of which was worn wood, eroded by countless waves into beautiful sculpted shapes, the tree rings giving texture. One in particular reminded me of the moai on Easter Island – the monolithic statues with their overlarge heads. Stones had become embedded in the wood, the power of the sea forcing them into holes and gaps. Stark breakwaters ran out into the sea, their black metal posts standing sentinel having mostly lost their infilling boards of wood. Worm-like fossil shapes had made patterns on a lone rock. On this second visit we found less pottery shards, the sea seemingly depositing the majority on the western side, as the water sweeps round the small headland from the harbour.



Pounding continuously, the waves were much nearer today and we had to be wary of the further reaching ones, threatening to catch us with their white foam fringes. Blustery wind whipped and tugged us as we scoured the beach and searched for interesting shapes to photograph. So absorbed were we by the elements, the shapes, the rugged beauty of this largely hidden place, that three hours passed before we realized we were cold and stiff. A brisk walk back up the steep slope revived us – the only other people we had seen were a few dog walkers and men conducting some kind of survey work.



# Diary of Forthcoming Events

This page is printed to give readers and organisers the opportunity of planning events without clashing with existing ones, which are already in the 'diary'. It is not intended as a means of advertising and we take no responsibility for errors or omissions. Acceptance is at the discretion of the editor. Please send your updates by email to [pbarnes20@icloud.com.plus.com](mailto:pbarnes20@icloud.com.plus.com) or via methods outlined on Page 4.

Location and name codes below:

## One-Off Events

Date	Time	Event	Where	Tel. No.	Date	Time	Event	Where	Tel. No.
05-May	7pm	Coronation Music On A Friday & BBQ	LPC		24-Jun	7.30pm	The Rudes Outdoor Theatre See P14	TF	
08-May	11am	Etchinghill Coronation Celebration	EVH		08-Jul	8am	Boot and Summer Fayre	LW	
09-May	7.30pm	LVH AGM	LVH		05-Aug	8am	Boot and Late Summer Fayre	LW	
13-May	10am	Postling Coffee and Cake	Postling Church		09-Sep	8am	Boot and Autumn Fayre	LW	
14-May	6pm	Etchinghill AGM	EVH		16-Sep	3pm	Newsletter Deliverers Tea	AUKL	863737
12-21 May		<b>Lyminge Coronation Festival - see P5</b>		<b>863856</b>	17-Sep	9am	Autumn Garage Sale		863856
20/21 May		<b>Garden Safari</b>		<b>863856</b>	TBC	10am	Autumn Stream Clean	TF	862508
20-May	10am	Spring Craft Fair	LVH		12-Oct	7.30pm	Lyminge Association AGM	TBC	
20-May	10am	"Pick Up a Plant"	TF		14-Oct	10am	Etchinghill Litter Pick	Meet EVH	07544 670363
20/21 May		Military Event	EVL		21-Oct	7pm	Autumn Quiz	EVH	07544 670363
03-Jun	3pm	Haywardians in Concert	LMC		23-Nov	4.45pm	Switching on of Christmas Tree Lights	LL	
10-Jun	8am	Dog and Owners Fun Day	LW		26-Nov	4.30pm	Christmas Tree Lighting	Meriden Park & EVH	07544 670363
16/17 June	7.45pm	Murder at The Manor	LVH		03-Dec	6.30pm	ERA AGM	EVH	07544 670363
17-Jun	10am	RBL Coffee Morning	St Mary's, Elham		18-Dec		Parcel Delivery		

## Weekly Events

Day	Time	Event	Where	Tel. No.	Day	Time	Event	Where	Tel. No.
Mon	9.30am	Dementia & Me Unit	AUKL	269602	Wed	10.30am	Pilates	RMV	07944028445
Mon	10am	Open House Coffee House	EVH	863394	Wed	2pm	Bingo (Start date TBC)	EVH	
Mon	10am	Bridge Club	LBC	863177	Wed <sup>5</sup>	3pm	French Conversation	Call	862972
Mon	10.30am	Lyminge Larks (Singing)	LMC	07951572920	Wed	7pm	Tayne Centre Circuits	TC	07925982995
Mon	10.30am	Cognitive Stimulation Therapy	AUKL	269602	Wed	7.30pm	Cantores Dominicae Choir	LVH	07840796383
Mon	5.30pm	Pilates	EVH	07951608008	Thurs	9.30am	Dementia & Me Unit	AUKL	269602
Mon	6.30pm	Ballroom/Latin/Salsa Dancing	TC	07966751991	Thurs	10am	Lyminge Morning Art Group	EVH	01303211364
Mon	6.30pm	Judo Club	LVH	862946	Thurs	10.15am	Baby Rhyme Time	LL	03000413131
Mon	7pm	Pilates	EVH	07951608008	Thurs	10.30am	COGS	AUKL	269602
Mon	7.30pm	Yoga	RMV	07977503897	Thurs	11.45am	Streetz to Streetz (fish and chips)	AUKL	07955926835
Tues	9.30am	Dementia & Me Unit	AUKL	269602	Thurs	2pm	Lyminge Afternoon Art Group	TC	07870494644
Tues	10am	Lyminge Baby & Toddler Group	TC	07870405567	Thurs	3.30pm	Pilates	EVH	07944028445
Tues	10am	Painting and Drawing	AUKL	269602	Thurs	5pm	Pilates	TC	07951608008
Tues	10.30am	Poetry Group	LL	03000413131	Thurs	6.15pm	Pilates	EVH	
Tues	10.30am	Cognitive Stimulation (Cogs)	AUKL	269602	Thurs	6.15pm	Pilates	TC	07951608008
Tues	11.45am	Pilates	EVH	07834839801	Thurs	7pm	Short Mat Bowls	LVH	863842
Tues	12.45pm	Seated Yoga	AUKL	269602	Thurs	7.30pm	Ballroom and Latin Dancing	EVH	07967979610
Tues	2pm	Pickleball	EVH	863819	Fri	8am	Chiropody (appointment only)	AUKL	269602
Tues	5pm	Pilates	EVH	07944028445	Fri	9.30am	Dementia & Me Unit	AUKL	269602
Tues	6.45pm	Short Mat Bowls	LVH	863842	Fri	9.30am	Pilates with Katherine	AUKL	269602
Wed	8am	Pilates	TC	07951698008	Fri	10.15am	Talk Time	LL	03000413131
Wed	9am	Morning munchies (breakfast)	AUKL	269602	Fri	10.30am	Maintenance Cognitive	AUKL	269602
Wed	9.30am	Dementia & Me Unit	AUKL	269602	Fri	10.45am	Movement to Music	AUKL	269602
Wed	9.30am	Age UK Info & Advice – drop in	AUKL	269602	Fri	6pm	Junior Cricket Training Sessions	SPCC	07869283195
Wed	10am	Pilates	TC	07825109670	Fri	7pm	Table Tennis	EVH	

## Monthly Events

When	Time	Event	Where	Tel. No.	When	Time	Event	Where	Tel. No.
1st Mon	2pm	RBL, Elham Valley Branch	St Mary's	862508	4th Wed	2.30pm	RM Circle	RVH	862913
3rd Mon	7pm	Etchinghill Cinema Club	EVH	07544670363	Last Wed	7.30pm	Quiz Night	C&H	01303901011
Last Mon		Parish Council Meeting	SNL	07715221705	3rd Thurs	7.30pm	LA Committee Meeting	TC	07840796383
1st Tues <sup>3</sup>	7.30pm	LHS Talk/Event	TC	863879	Last Thurs	1.30pm	Dementia Café	AUKL	269602
1st Tues	2pm	Library Reading Group	LL	03000413131	4th Fri	7.30pm	Beetle Drive	RVH	862616
2nd Tues	2pm	Library Reading Group	LL	03000413131	Last Fri	1.30pm	Team Quiz	AUKL	269602
3rd Tues <sup>2</sup>	7.30pm	Gardeners' Society	TC	07703149008	2nd Sat	10am	Postling Ch. Coffee Morning	PC	863536
Last Tues	10.30am	Lyminge Poetry Group	LL	03000413131	2nd Sat	10am	Ethelburga Quilters	EVH	
1st Wed	10.30am	Lyminge Friends	LMC	862598	4th Sun	10am	Farmers' Market	LVH	
2nd Wed	11am	Singing For All	AUKL	269602	Last Sun	10am	Springrise Canine Care Pet	EVH	07582407637

<sup>1</sup> In term time only <sup>2</sup> Except Jan and Feb <sup>3</sup> Except Jan, Feb, and trip in Aug <sup>4</sup> Except Aug and Dec <sup>5</sup> Not held in August

**AUKL** Age UK Lyminge; **C&H**: Coach & Horses; **EVH**: Etchinghill Village Hall; **ELVH**: Elham Village Hall, **ERA**: Etchinghill Residents' Association; **ES**: Elham Square, **EVL**: Elham Valley Line Trust, **JF**: Jubilee Field; **KH**: Korf House; **LB**: Laing Bennett; **LBC**: Bowls Club; **LL**: Library; **LMC**: Lyminge Methodist Church; **LPC**: Lyminge Parish Church; **LPS**: Lyminge Primary School; **LVH**: Lyminge Village Hall; **LW**: Lord Whisky; **NP**: Nailbourne Court; **PC**: Postling Church; **PH**: Lord Whisky, Park House; **PVH**: Postling Village Hall; **RVH**: Rhodes Minnis Village Hall; **RMC**: Rhodes Minnis Church; **RMCS**: Rhodes Minnis Cat Sanctuary; **RR**: Rigden Room; **SMVH**: Stelling Minnis Village Hall, **SNL**: See Newsletter for info; **SP**: Sibton Park; **SPCC**: Sibton Park Cricket Club; **TC**: Tayne Centre; **TF**: Tayne Field; **WF**: Well Field



## St Mary and St Ethelburga Parish Church, Lyminge

### Sunday 7th May

Lyminge 10am WOW Service  
Paddlesworth 6pm Evensong, BCP

### Sunday 14th May Rogation Day

Paddlesworth 8am Holy Communion CW2 followed by breakfast in the Cat and Custard Pot and a walk to Lyminge for those who wish.  
Lyminge 11am Sung Eucharist, then continue rogation walk to Stanford via Postling.  
Stanford 4.30pm Evensong (BCP) and tea  
Postling 7pm Rogation Compline

### Sunday 21st May

Lyminge 10am Holy Communion CW1  
Paddlesworth 6pm Evensong

### Sunday 28th May Pentecost - Whit Sunday

Paddlesworth 8am Holy Communion BCP  
Lyminge 10am Outdoor Benefice Pentecost Service.

### Sunday 4th June Trinity Sunday

Lyminge 10am WOW Service  
Paddlesworth 6pm Evensong (BCP)

To contact the churches, please phone:

Rev Deb Scoble, Curate. The Rectory, Lyminge.

Tel: 01303 862747 [www.elhamvalleygroupofchurches.co.uk](http://www.elhamvalleygroupofchurches.co.uk)  
[www.achurchnearyou.com](http://www.achurchnearyou.com)

## Postling Church Services

**7th May 9.30am** Family Communion  
**14th May 7pm** Service of Compline for Rogation  
**21st May 9.30am** Morning Service  
**28th May** No Service in Postling

## Lyminge Methodist Church

A warm welcome awaits you at the following services to be held at **11am**, followed by a time of refreshment and fellowship.

**7th May** Rev, Gordon Newton  
**14th May 10.15am** Valley Service at Rhodes Minnis  
**21st May** Mr Hugh Burnham  
**28th May** **NO** service at 11am. **3.30pm** Circuit Service at St. Andrew's, Cheriton

## Rhodes Minnis Chapel

A warm welcome is extended to anyone who wishes to join us for the following services at 9.30am in our small and beautiful Chapel and to share fellowship after the services over coffee and biscuits.

**7th May** Service led by the local congregation  
**14th May** A Valley Service at **10.15am** to celebrate the Chapel's 135th Anniversary led by Rev. Alan Hewitt  
**21st May** Mr. Hugh Burnham  
**28th May** No Service but there is a Testimony Service given by our minister, Rev. Gill Songer, at St. Andrew's, Cheriton at 3.30pm



## Christians in

## Lyminge

**5th May:** Music on a Friday in the Parish Church. BBQ starts at 7pm

**20th/21st May:** Flower Festival in the Parish Church.

*All things bright and beautiful,  
All creatures great and small,  
All things wise and wonderful,  
The Lord God made them all.*

## Lyminge Newsletter

**Terms & Conditions: Copy deadline for next edition - 18 May 2023**

Please email your copy to the editor ([pbarnes20@icloud.com](mailto:pbarnes20@icloud.com)). Your payment must be received before your article or advert can appear in the Newsletter. Invoices will be issued and should be paid ASAP either by BACs, cheque, credit card or cash (details on invoice). **Business adverts** cost from £9.50 per month or £95.00 per year. **Personal and charity adverts and articles** from £3 per month, or £30.00 per year. The annual rate offers 12 entries for the price of 10. Please make cheques payable to '**The Lyminge Association**'. If you do not have email, a typed paper-copy may be left with the payment at the Library. Newsletter printed by Canterbury Print & Mail.

**Lyminge Association accepts no liability for the accuracy of the advertisements or subsequent actions arising in conjunction with advertisers in the newsletter.**

**Further details from Peter Barnes (editor) on 01303 863737 or [pbarnes20@icloud.com](mailto:pbarnes20@icloud.com)**





## CORONATION EVENTS

**Lyminge**  
**Coronation**  
**Festival**

### Thursday 4 May

**5.30pm Well Decorating** - Brownies and Guides will be on Tayne Field. Theme; 'Flowers and Crowns'

### Friday 5 May

**7pm Music On A Friday** with BBQ Lyminge Parish Church. See ad on P6

### Monday 8 May

**11am Family Celebration of The Coronation** at Etchinghill Village Hall. See ad on P8

# LYMINGE ASSOCIATION CORONATION FESTIVAL 12-21 MAY

### Friday 12 May

**Live Act Tayne Field** (bring own chairs or rug): 7-9pm 'Here Come The Girls'

Food and Refreshments: Beer Festival - Coach & Horses

### Saturday 13 May

**12noon to 4pm Fun Day** with rides, sideshows, bouncy castle, mini roundabouts, coconut shy, hook a duck, maypole dancing, teddy tombola and **Circus Skills** as well as 3 live acts on the stage on Tayne Field.

**Live Acts Tayne Field** (bring own chairs or rug): 12-2pm Victoria Bass 2-4 pm The Undecided, 5-7pm Rock of Aged

**10am to 4pm Art Exhibition** in Tayne Centre

Food and Refreshments: Streetz to Streetz - fish & chips, burger van, candy floss, ice cream, tea & coffee and beer festival - Coach & Horses

### Sunday 14 May

**10am to 1pm Fun Dog Show** organised by Lyn Fagg. See ad on P6.

**11am to 4pm Art Exhibition** in Tayne Centre

**12noon to 4pm Fun Day** with rides, sideshows, bouncy castle, mini roundabouts, coconut shy, and hook a duck,.

**Live Acts Tayne Field** (bring own chairs or rug): 2-4pm Shades of Grey, 5-7pm Queen Tribute Band

Food and Refreshments: Streetz to Streetz - fish & chips, burger van, candy floss, ice cream, tea & coffee and beer festival - Coach & Horses

### Monday 15 May

**Etchinghill Film Night** - 'THE LOST KING' Etchinghill Village Hall - 7 for 7.30pm Entrance Fee £6pp. See ad on P12

### Tuesday 16 May

**7pm for 7.30pm start. Lyminge Gardeners' Society Quiz** 'Gardening and The Natural World Quiz'. Tayne Centre.

Open to all. £3 members. £5 non members. See ad on P6

### Wednesday 17 May

**7.30pm Cantores Prom Concert** Lyminge Village Hall. £5 entry on door. See ad on P6

### Thursday 18 May

**11am Coffee Concert** with John & Sue Mitchell in Tayne Centre. "**Extreme easy listening**". Refreshments served from 10.30am. See ad on P7

**3.30pm - 6pm Family Seek and Find Trail** - hunt out interesting things around your village See Ad P7

### Friday 19 May

**6.30pm for 7pm Quiz** in Lyminge Village Hall. Tables of 8. £3 a head and bring own drinks and snacks. Raffle will also be available. Book your table with Dave or Honor 01303-862928 - closing date 16 May.

### Saturday 20 May

**10am Pick up a Plant** on Tayne Field - a chance to pick up some additional plants for your garden or share your excess seedlings/plants. See ad on P17

**10am onwards Garden Safari** - passports (£3) available beforehand at Snippers and Clippers 16-20 May. Passport Office open on the day near Lyminge Methodist Church, Church Road, CT18 8JA 10-4pm. See ad on P7

**10am to 4pm Flower Festival** in Lyminge Parish Church. See ad on P7. Light lunches and cream teas provided.

**9am to 5pm Craft Fair** in Lyminge Village Hall. See ad on P8

### Sunday 21 May

**10am onwards Garden Safari** - passports (£3) available beforehand at Snippers and Clippers 16-20 May. Passport Office open on the day near Lyminge Methodist Church, Church Road CT18 8JA 10-2.30pm

**10am Elham Valley Walkers** - Exploring the Archaeological Heritage of Lyminge. Reserve free place at:

[eventbrite.co.uk/e/10-exploring-the-archaeological-heritage-of-lyminge-tickets-559562946837](http://eventbrite.co.uk/e/10-exploring-the-archaeological-heritage-of-lyminge-tickets-559562946837)

**12noon to 4pm Flower Festival** in Lyminge Parish Church. See ad on P7. Light lunches and cream teas provided.

# MUSIC ON A FRIDAY

Celebrate the  
Coronation

**BBQ**

**Friday 5th May 7pm**

**St. Mary's & Ethelburga  
Parish Church, Lyminge**

**Free BBQ Free Wine**

**Plenty of Music**

**All welcome**



**Lyminge Festival  
Fun Dog Show**

*(3 pedigree and 12 fun classes)*

Sunday 14th May

Tayne Field

10am - 1pm : Entry £2

Sponsored and run by Lyn Fagg  
The ELHAM DOG TRAINING CLUB

Lyn can be contacted on 07866 234820 or

[lyn.fagg@yahoo.co.uk](mailto:lyn.fagg@yahoo.co.uk)

*Hint for the day: bring your own chair*

**quiz  
night**



Come and join us for a fun Quiz  
Tuesday 16<sup>th</sup> May  
The Tayne Centre

No need to make up a team in advance, just join a table as  
you arrive and make some new friends – maximum of 6  
per table

Refreshments from 7:00pm  
Quiz starts at 7:30pm  
Members £3 - Non-Members £5  
(to include tea/coffee and biscuits)

**TALLEST**

**SUNFLOWER  
COMPETITION -  
2023**



Remember to pick up your seedlings at  
the "Pick up a Plant" event on 20<sup>th</sup> May.  
Also available at some of the Garden  
Safari open gardens

See  
Posters around the village or email:  
[lymingegardeners@gmail.com](mailto:lymingegardeners@gmail.com)  
for more details

For more information about the Gardeners' Society please email:  
[lymingegardeners@gmail.com](mailto:lymingegardeners@gmail.com) or call Anne on 07703 149008



**Cantores**

presents

**LYMINGE  
FESTIVAL  
PROM CONCERT  
2023!**

**Wednesday 17 May at 7.30pm**

at

**Lyminge Village Hall**

Programme to include:

Les Miserables

Simon & Garfunkel medley

Coronation pieces & the usual prom favourites

Bring your flags, hats, voices & most  
importantly - yourselves!

**Admission £5 on the door**

For more information, please contact Nancy on 07840 796383 or check the Lyminge Newsletter







## Lyminge Festival 2023

Sue and John Mitchell will entertain you at a Coffee Concert on Thursday 18 May at 11am in the Tayne Centre.



Popular Songs, Well Known Favourites and Easy Listening

Coffee and Refreshments from 1030

For more information, contact Nancy on 07840 796383 or see Lyminge Newsletter

# Lyminge Coronation Festival

Why not get the family involved?

on Thursday 18th May and join in the

## Seek & Find Quiz

Walk all around Lyminge following clues  
Separate clues for children and adults

Prizes for the overall winners!

Entry FREE !!!

Meet at the Methodist Church at 3.30 pm



A Lyminge Festival Event



## FLOWER FESTIVAL

This year's theme

### POMP & CEREMONY

at

ST MARY & ST ETHELBURGA CHURCH, LYMINGE

20th and 21st May

Saturday 10am to 4pm

Sunday 12noon to 4pm

### REFRESHMENTS

Including:

Ploughman's Lunches & Cream Teas



The Lyminge Association

Lyminge Coronation Festival

## GARDEN SAFARI

20th & 21st May

10.00 am ~ 4.00 pm approx. both days

Special 'Passports' are available in advance from 16th to 20th May at **Snippers & Clippers**

and

Saturday 20th and Sunday 21st May near the Methodist Church, Church Road, CT18 8JA

£3



Lyminge Parish Church  
**FLOWER FESTIVAL**

Light Lunches & Cream Teas

Saturday 20th & Sunday 21st  
open 10 am to 4 pm  
open 12 noon to 4 pm



**RESIDENTS ARE CORDIALLY  
INVITED TO CELEBRATE THE**

**CORONATION OF  
KING CHARLES III**

**ETCHINGHILL VILLAGE HALL  
BANK HOLIDAY MONDAY 8<sup>TH</sup> MAY  
FROM 11 AM**



\*A family focused day will start with a singles pétanque competition at 11am - no need to book, just register on the day. Entry to the competition is £2pp and is open to everyone, experienced or not, and includes children

\*Bacon rolls and cream teas will be on sale while stocks last. Please bring picnics and a bottle of bubbly (or two!) to toast the King

\*Raffle tickets for a Coronation hamper will be on sale and tables will be set up in the hall in case of inclement weather - it is a Bank Holiday after all!

The event is being jointly hosted by the ERA committee and Village Hall trustees

**Spring Craft Fair**

**Lyminge Village Hall  
Woodland Rd Lyminge CT18 8EW**

**Saturday 20<sup>th</sup> May 2023  
10am-4pm**

**Refreshments available  
and free parking!!**



**Mature Drivers Safety Presentation**

KCC Safer Road Users Team Delivered Presentation for The Local Community



**Monday 19 June 2023**

**2pm**

**Etchinghill Village Hall**

St Mary's Drive, Etchinghill, Folkestone CT18 8NQ

*FREE - There is no charge to attend this presentation*

The KCC Safer Road Users Team have developed a Mature Drivers Safety Presentation.

The Presentation is predominantly aimed at drivers over 60 who are currently driving.

We are offering a friendly, informal, and informative session.

We hope everyone that attends will leave feeling they have gained a little extra knowledge and improved self-confidence to help them remain driving safer, for longer. Topics covered will be common crash causation, impairment, including driver fatigue, driving whilst taking prescribed medication, smart motorways and eco driving tips.

The presentation is **FREE** to attend.

The session will run for a duration of around one & a half hours, with provision at the end of the presentation for an informal question & answer session.

**For further information regarding booking your place at your local presentation please contact:**

**Anna Allan, Lettings Officer - 07514 758936 Email: [d.allan142@btinternet.com](mailto:d.allan142@btinternet.com)**

*"It will jog the memory and make you think!"*

*"It would make you feel happier in yourself knowing if you're still okay to drive."*

*"After listening to this, it's given me the confidence to say that I'm still alright to continue driving."*

*These are comments from people that have attended some of our previous presentations!*

Kent County Council Safer Road Users Team ([saferroadusers@kent.gov.uk](mailto:saferroadusers@kent.gov.uk))

**Brian Sawle 1938 -2023**

On behalf of myself and family, I would like to thank our friends and neighbours for their messages of condolence on the very sad passing of my dear Brian, loving husband, loving father and a much loved Grandad. He will be so sadly missed.

*Mary Sawle and family*



**ROYAL BRITISH LEGION  
ELHAM VALLEY BRANCH  
MIDSUMMER COFFEE  
MORNING**

**Saturday 17th June  
1000 - 1230**

**At St Mary's Church Hall,  
Elham**

Come and enjoy some refreshments and fellowship. Cake stall and raffle

**Free entry and refreshments;  
retiring collection**





## POSTLING COFFEE & CAKE MORNING

Thank you to all who attended the April coffee and cake morning. Again how wonderful to see friends, neighbours and five visitors from Belgium - we accept Euro currency.

Our next coffee and cake morning will be on

**Saturday 13th May 10am to 12noon in the beautiful Postling Church.  
All donations will go to the Pilgrims Hospice in their entirety.**

### *District Councillors' Update - May 2023*

This is my final report as a District Councillor for Folkestone and Hythe representing North Downs West as I am not standing for election on 04 May. (I am still your County Councillor so do continue to contact me in that role.)

It's your District Council that is responsible for running elections and Susan Priest who is the Chief Executive of Folkestone & Hythe District Council is also the Chief Returning Officer for the area. There's an Election Team responsible for registration of all those eligible to vote, arranging the polling stations, issuing polling cards, postal and proxy votes, issuing notices of elections, overseeing the counting of votes and checking election expenses of candidates. As you would expect there's information about this and more at [www.folkestone-hythe.gov.uk](http://www.folkestone-hythe.gov.uk) The Elections Team can also be contacted on 01303 853497.



You don't need to bring your polling card with you to vote in person but from 04 May you do need to have photo ID with you. A passport, driving licence or an Older Person's Bus Pass are all fine for this purpose and you'll find a full list of acceptable documents on the council website. Those without photo ID can apply for a free of charge Voter Authority Certificate on the gov.uk website or through the District Council. (The deadline to do this in time for the 04 May election was the 25 April so if you are someone without photo id do please apply in good time for future elections.)

Most European countries require some form of identification to vote and international election observers and Electoral Commission have long called for this to be introduced. Impersonation of voters has taken place most notably in Tower Hamlets and it used to be a problem in Northern Ireland. A requirement for voter ID was introduced to Northern Ireland in 2003 which led to names disappearing from the electoral register but turnout has not been affected.

Do please use your vote. According to a recent report by the House of Commons Library the average turnout for a local election in England is just 35.9%. Yet local government can have a big impact on our lives and you are more likely to know your local councillor than your MP.

A reminder that for those facing financial hardship there is help available. Find out more at [www.folkestone-hythe.gov.uk/help-support-cost-living](http://www.folkestone-hythe.gov.uk/help-support-cost-living) or ring the council on 01303 853000.

The really important news to share in this last report is that on 04 April outline planning permission was granted by the District Council's Planning Committee for Otterpool Park Garden Town (near Westenhanger railway station and Junction 11 of the M20). Over the next 20/30 years the new town will provide most of the new homes and employment land needed for our district. A new Health Hub, schools and other facilities are planned to open in step with the growth of the population and at least half of the new development will be green space accessible to the public. Otterpool Park Garden Town will also help your District Council resist applications for piecemeal housing developments elsewhere. You can find out more at [www.otterpoolpark.org](http://www.otterpoolpark.org) including events at Westenhanger Castle such as the Zest Fest over the weekend of 03/04 June.

I'd like to thank the Lyminge Parish Councillors who are standing down from 04 May for their service to the parish over the last four years especially Sue Luff the chairman who did a sterling job and conducted meetings with great patience and courtesy. My thanks as well to the clerk Sarah Harrison who has left and who I always found a pleasure to work with.

My thanks to all those who have elected and re-elected me over the years to represent you at the District Council and my best wishes to those who will be responsible to you in the future at both Parish and District council.

**Susan Carey your current Folkestone & Hythe District Councillor**

# Heritage Safari

Bossingham + Stelling Minnis + Upper Hardres

The Heritage Safari is on Sunday 21st May (12noon-5pm). There will be interesting short talks, displays including military vehicles, tours, an informative guided walk and much more, all themed around the recent and past heritage of our three neighbouring villages.

Details of all the events and the six venues are at [www.heritatesafari.co.uk](http://www.heritatesafari.co.uk). The Heritage Safari is in aid of Stelling and Upper Hardres churches.

Advance tickets are available at Stelling Minnis village shop for £8 per adult (17+) **or** online for £8.75 (incl. booking fee) at [www.heritatesafari.co.uk](http://www.heritatesafari.co.uk). Tickets on the day are £10 each adult (17+) at Stelling Minnis Village Hall. U16s are free when with an adult.

## HELP!!

### NEW IDEAS ARE NEEDED TO ENABLE THE LYMINGE ASSOCIATION TO SURVIVE HOW CAN WE WORK SMARTER?

All ideas by phone, email, letter, pigeon...we don't mind how off-the-wall the thoughts might be, we just need them to help develop our strategy.

Please send your thoughts to the Editor:

Peter Barnes

01303863737, 07808775302

[pbarnes20@icloud.com](mailto:pbarnes20@icloud.com),

Ivy Lodge, Woodland Road, Lyminge, CT18 8EP

We would be most grateful for your ideas!!

## ETCHINGHILL VILLAGE HALL

### The Etchinghill Village Hall AGM will be held on Sunday 14th May 2023 at 6pm

#### To all Etchinghill Residents

Please come along to the AGM and show your support for this marvellous local facility.

This is your opportunity to find out more about the Hall, the activities that are available, together with an update on the finances and plans for the year ahead.

If you would like to be involved with the future management of the Hall you will have the opportunity to put your name forward as a future Trustee.

The meeting will last approximately one hour and refreshments will be available after the meeting.

Please support your Village Hall

JOHN WHITE

Chairman

Etchinghill Village Hall

## THE TOWER THEATRE FOLKESTONE

### THE NEW FOXTROT SERENADERS

This highly professional seven-piece band will once again raise the roof with music from the golden years of big band music!

**SAMMY, FRANK AND DEAN**

Saturday 10 June  
7.30pm

BOX OFFICE 01303 223925 or [towertheatrefolkestone.co.uk](http://towertheatrefolkestone.co.uk)

### HASTINGS PHILHARMONIC ORCHESTRA

A dynamic world-class symphony orchestra, led by Artistic Director Marcio da Silva.

We are delighted that they are returning to The Tower Theatre for a second time, with a popular programme featuring Vivaldi's 'Four Seasons' and 'Cuatro Estaciones Porteñas' (Argentinian Four Seasons) by Argentinian composer Astor Piazzolla.

Friday 16 June 7.30pm

The Tower Theatre, North Road, Shorncliffe, Folkestone CT20 3HL

Registered Charity 1180504

Editor: [pbarnes20@icloud.com](mailto:pbarnes20@icloud.com)

In aid of LORD WHISKY SANCTUARY FUND (Charity No 283483)

Park House Animal Sanctuary Stelling Minnis CT4 6AN

Tel: 01303 862622 [www.lordwhisky.co.uk](http://www.lordwhisky.co.uk)

[lord.whisky@btinternet.com](mailto:lord.whisky@btinternet.com)



### DOG & OWNERS FUN DAY & BOOT FAYRE SATURDAY 10 JUNE

At Park House, Stelling Minnis CT4 6AN

Boots from 8am (cars £7.50 / vans £10)  
Entertainment including The Southern Golden Retrievers, Samphire Dog Training and more

Companion Dog Show with Pedigree & Fun Classes

Classic Cars Welcome - Hot & Cold Refreshments  
Tombola - Lots of Stalls - Entry by donation  
Ample free parking

### Addendum

In the March edition of the Lyminge Newsletter, we incorrectly stated in Judith Lansdell's obituary that she was linked with the '**Lord Whisky Cat Sanctuary**' when it should have read '**The Rhodes Minnis Cat Sanctuary**'.

We apologise for the error and the confusion that it may have caused.

Editor



# Singing For All

Wednesday  
11am-12noon  
10.05.2023

Age UK, Lyminge  
Everist Court



## Dementia & Me

### Come and see us at our Dementia Cafés

Thursday 11th May 12.30pm - 2.30pm  
Age UK, Lyminge, Station Road, Lyminge CT18 8HQ

Tuesday 20th May 1.30pm - 3.30pm  
Age UK Hythe, Stade Street, Hythe CT21 6BD

Friday 19th May 1.30pm - 3.30pm  
Age UK Ashford, Farrow Court, Stanhope Road, Ashford TN23 5RF

Our café provides a drop-in service for anyone who may need support, information, or advice about Dementia. This informal get together can be attended without booking or a referral. See below for March dates and venues.

We offer a **FREE** bus service from Hythe to Lyminge  
Collection times are 1:00pm and drop off is 3:45pm (booking essential).



For more information  
01303 269602 or 07379 646426  
demo@ageukhl.org.uk

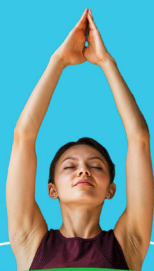
Charity No 1125274

Company No. 6589817

## AGE UK - LYMINGE



# SEATED YOGA



Every Tuesday

*\*Limited Spaces*  
£5.35pp / £6pp from April

With Sam;  
12.45pm - 1.45pm

Age UK Lyminge,  
Everist Court

TO BOOK CALL 01303 269602



## Join us for Morning Munchies

Every Wednesday

9am-11am

AGE UK Lyminge, Everist Court



# ETCHINGHILL RESIDENTS' ASSOCIATION

## Film Night

'THE LOST KING' 12

Monday 15th May 2023

Etchinghill Village Hall - 7 for 7.30pm

Entrance Fee £6pp

Open to new and existing members

Free Refreshments and Raffle



[www.etchinghill.info](http://www.etchinghill.info)

## Rhodes Minnis Circle

Our speaker in March was Lara Murphy from The **Canterbury Dogs Trust** at Chestfield. This opened in 1999 and cares for about 14,000 pets per year. The kennels are well equipped with under floor heating and plenty of space outside with woods and fields nearby. If dogs are adopted they are neutered, vaccinated and micro-chipped by a vet and given a collar and lead and food sample, 4 weeks insurance and can be taken back if problems arise. All in all an excellent facility for our stray and abandoned pets.

The Competition was won by Fran Davis with Dorothy Athow 2nd, Daphne Andrews 3rd and Sandra Dowdall 4th.

On **Wednesday 10th May** we are celebrating **The Coronation** with a **Bring and Share Tea Party** and **Musical Entertainment**.

We meet at Rhodes Minnis Village Hall at 2-30pm and visitors will be made very welcome. **Marion 862913**



## Lyminge Judo Club

(Bushido Club registered)

We are a small friendly village club. We welcome and encourage both novices and skilled players and train every Monday evening at Lyminge Village Hall from 6.30pm. Open to all ages from 6 upwards - no upper age limit.

Juniors £2.50 per week; Seniors £3.50 per week. First session free, with no obligation.

**Contact: Craig Munn** email: [craigmunni@yahoo.com](mailto:craigmunni@yahoo.com)

Facebook: [www.facebook.com/Lymingejudoclub](http://www.facebook.com/Lymingejudoclub)

Editor: [pbarnes20@icloud.com](mailto:pbarnes20@icloud.com)



# LYMINGE HISTORICAL SOCIETY



Come and join us for our May talk  
**Tuesday 2nd May 7.30pm, The Tayne Centre  
Leas Lift**

A talk with James Walker-Osborn  
*Please Note: There will be a retiring collection to help in the renovation of this historic Folkestone landmark*

Tuesday 6th June, Judi Knight will be joining us again for a talk on *Making do and Mend - How civilians coped with shortages and rationing in WW2*

**Not paid your 2023 Subscriptions yet?  
Great value at £11.00. Cash or Card accepted.**

**!!Lyminge a History Part 12 on sale!!**

This can be purchased at the Library, Lyminge Food and Wine or direct from Daphne on the number below. You can also purchase it at the monthly Lyminge Historical Society talks.  
*Do you have an idea for a story to go in Lyminge a History part 13, now in preparation? Email us with your thoughts.*

All *Lyminge a History* publications can be purchased individually through Lyminge Food and Wine, Lyminge Library, or online via our website using PayPal.

Plus: purchase Parts 1-5 as a bundle for £22 or Parts 1-12 for £60. Lyminge archaeology chapters in Parts 2,4,6,7,8,10 & 12 for £35\*.

To take advantage of the offer please call Daphne Andrews on 01303 862865. N.B. These bundle offers are not available from The Library or Lyminge Food and Wine.

\*Postage and packaging extra.

Email: [lymingehistoricalsociety@gmail.com](mailto:lymingehistoricalsociety@gmail.com)

Website: [www.lymingehistoricalsociety.co.uk](http://www.lymingehistoricalsociety.co.uk)

Facebook: [www.facebook.com/Lymingehistoricalsociety](http://www.facebook.com/Lymingehistoricalsociety)

## PILATES

TUESDAY	5pm	Etchinghill Village Hall
WEDNESDAY	10.30am	Rhodes Minnis Village Hall
THURSDAY	3.30pm	Etchinghill Village Hall
THURSDAY	5pm	Rhodes Minnis Village Hall

All classes are suitable for any level of ability from complete beginner to intermediate.

Price: £10

Limited spaces,  
please book in advance.



For more information:

[lucianaclarke.pilates@gmail.com](mailto:lucianaclarke.pilates@gmail.com)

07944028445

[www.lucianaclarkepilates.com](http://www.lucianaclarkepilates.com)



## Etchinghill Update - May 2023

### ETCHINGHILL VILLAGE HALL AGM

The Etchinghill Village Hall Annual General Meeting will be held at the hall on Sunday 14th May at 6pm. All Etchinghill residents are welcome. The meeting will last for approximately one hour and refreshments will be available at the conclusion of the meeting. Look forward to seeing many of you there on the day. **John White, Chairman**

### ETCHINGHILL RESIDENTS' ASSOCIATION (ERA)

**Chairman:** David McCombe 07939 076617. Email: dmccombel@gmail.com Website: www.etchinghill.info Facebook: Etchinghill Residents

### FILM NIGHT - ETCHINGHILL VILLAGE HALL - MONDAY 15TH MAY "THE LOST KING" (12)

Comedy / Drama. Starring Sally Hawkins and Steve Coogan. In 2012, having been lost for over 500 years, the remains of King Richard III were discovered beneath a car park in Leicester. The search had been orchestrated by an amateur historian, Philippa Langley, whose unrelenting research had been met with incomprehension by her friends and family and with scepticism by experts and academics. This is the life-affirming true story of a woman who refused to be ignored and who took on the country's most eminent historians, forcing them to think again about one of the most controversial kings in England's history. Doors open at 7pm for a 7.30pm start. Entry is only £6 pp and includes refreshments and a free raffle. Prior booking is not required and new members are very welcome; please register and pay at the door.

**A CELEBRATION OF THE CORONATION OF KING CHARLES III - BANK HOLIDAY MONDAY 8TH MAY - ETCHINGHILL VILLAGE HALL & GROUNDS - EVENT STARTS 11AM.** A family focused day will start with a singles pétanque competition at 11am - no need to book, just register on the day. Entry to the competition is £2pp and is open to everyone, experienced or not, and includes children. Bacon rolls and cream teas will be on sale while stocks last. Please bring packed lunches and a bottle of bubbly (or two!) to toast the King. Tables will be set up in the hall in case of inclement weather - it is a Bank Holiday after all! The event is being jointly hosted by the ERA and village hall trustees.

**On behalf of Etchinghill village residents, we would like to thank Susan Carey for her many years of dedicated hard work for the village. Susan is retiring as a District Councillor for Folkestone and Hythe, but continuing her work as a Kent County Councillor. We wish her well for the future.**

**News contact: Jacqui Blandford - 07543 966830 or email: jacqui.blandford@gmail.com**



### Fifth Trust Update

[www.fifthtrust.co.uk](http://www.fifthtrust.co.uk)

We are delighted to announce the opening of our new sensory room which was installed at our Barham Skills Centre in March. This new multi-sensory space will offer several benefits to students and the result is truly incredible.

The specialist equipment is designed for the learning disabled community to improve visual, auditory, and tactile processing, as well as motor skills. We do thank all our donors who made this possible - this room will greatly enhance our students' experiences. Now a tranquil space full of coloured lights, gentle sound, different textures and the mesmerising movement of bubbles, the room will help students on the autism spectrum to calm and focus themselves. Multi-sensory spaces have also been shown to benefit people with ADHD, cerebral palsy, Down's syndrome, and developmental challenges.

Don't forget to visit the Valley Vineyard Garden Centre for all your spring gardening needs!

### MINDCRAFT EDUCATION

### MENTAL HEALTH COACHING FOR TEENAGERS



As an experienced special needs teacher with a qualification in counselling, I now offer single sessions and a number of courses directed at improving the mental health of teenagers. This can involve focusing on specific areas of concern or more general mental health issues, designed to create happier and more resilient young people.

For more information please contact me on 07458 949222 or go to [www.mindcraftededucation.co.uk](http://www.mindcraftededucation.co.uk)

## Coach & Horses

### CHECK OPENING HOURS

For bookings and any help needed, please phone 01303 901011 or check Facebook page 'Coach & Horses'



# 'Miss Popplewell's Garden'

## Outdoor Theatre with The Rudes

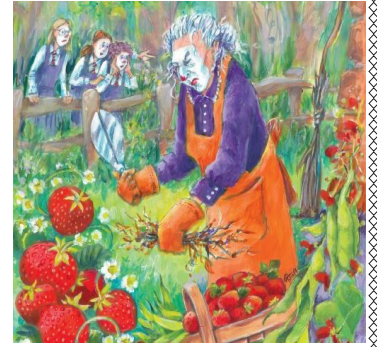
The Rudes are back in Lyminge again this summer with their outdoor theatre show on Tayne Field!!

It's April 1940 and Jocasta, Daphne and Dotty, will have to move from their school in idyllic Little Inking village to Buckinghamshire, where they will take refuge from the war. Lessons are suspended and they have two weeks left to have some fun and say goodbye to their friends. It's a disaster for Daphne. All she wants is to be kissed before she's seventeen, but now she's got to move away, she may never see Gerald again!

The girls decide to make one last raid on the old witch Miss Popplewell's strawberry patch. But an intruder gets in first. Who is he? Is it the gypsies, a burglar, a foreign agent, even an escaped convict? The entire village goes into a panic. But they're British! They must stick together.

In the meantime, will the girls get the strawberries? Will their kindly headmistress, Miss Tricklebank, confine them to their dorms? Will Daphne be kissed before she's seventeen?

You will have to be there to find out. The play is woven with poignancy and gently unearths buried things from Miss Popplewell's past.



**Tayne Field, Lyminge - Saturday 24th June - Start 7.30pm**  
**Bring your own chairs or rugs and a picnic**

Visit [www.therudemechanicaltheatre.co.uk](http://www.therudemechanicaltheatre.co.uk) or ring 01323-501260

### Lyminge Friends - May 2023

In April Andrew Ashton gave a fascinating talk about Goldenhurst, and afterwards, we went to Folkestone Garden Centre in Densole for shopping and lunch.

On Easter Monday, members met for Lunch in Etchinghill Golf Club which we enjoyed very much

On **Wednesday 3rd May, Steve Edney** will tell us how he won his two Golds in *A Tale of Two Gold Medals (Chelsea and Hampton Court 2019)*. He will also bring some of his plants for sale.

Last year, Steve gave us a great talk about the Salutation Gardens where he was Head Gardener. He is currently one of the experts on Radio Kent's Sunday Gardening.

On **Saturday 3rd June** we will meet to celebrate our **15th Anniversary** with an **afternoon tea party** in **Lyminge Age UK Centre**, Everist Court, Station Road.

The cost is £15 pp in advance. Members, new and old, and friends are welcome.

Please contact Marian (862015)

On **Wednesday 7th June**, we have a return visit from **Toni Mount** and this time her subject will be *Henry VIII - Hero or Villain*. Henry had more reasons than lust to divorce and behead, could he have been a hero, or was he just a villain?

We meet at 10.30am in the Methodist Church, Church Road, Lyminge CT18 8JA. Entry for 2023 is £4.00.

We are a friendly social group and welcome new members so just drop into a meeting, or if you'd like to talk to one of us first, please call 863500.

Please wear appropriate clothing and bring a blanket with you if you feel the cold.



### NOTICE OF THE ANNUAL GENERAL MEETING OF LYMINGE VILLAGE HALL

Notice is hereby given that the Annual General Meeting (AGM) of Lyminge Village Hall (charity number 281845) will be held:

- => Tuesday 9<sup>th</sup> May 2023
- => 7.30pm
- => at Lyminge Village Hall

**ALL WELCOME**



Hythe Aqua Swimming Club has vacancies for potential competitive swimmers Level 7 and above. Join a Club with a nationally accredited swim programme. Lessons/Coaching sessions are held on Tuesday & Thursday evenings at Hythe Pool.

We also welcome adult length swimmers to our Adult training on Tuesdays & Thursdays at 9.00pm

**To book your place**

Email: [hytheaqua@btinternet.com](mailto:hytheaqua@btinternet.com) or checkout our website: [www.hytheaqua.org.uk](http://www.hytheaqua.org.uk) or **F/book**

# LYMINGE PARISH COUNCIL

Etchinghill - Lyminge - Rhodes Minnis

[www.lymingeparishcouncil.org.uk](http://www.lymingeparishcouncil.org.uk)

[clerk@lymingeparishcouncil.org.uk](mailto:clerk@lymingeparishcouncil.org.uk)



Forthcoming council and committee agendas are displayed on the council notice boards on Tayne Field and the entrance to the Village Hall car park, Etchinghill.

Agendas and minutes are published on the council website and social media pages. If you would like a copy of council minutes or agendas please contact the clerk.

## **ELECTIONS: 4 MAY 23**

There will not be an election for Lyminge Parish Council in May as the number of nominations received were less than the number of vacant positions, this is referred to as an 'uncontested election'.

In line with relevant legislation, **Lyminge Parish Council is looking to co-opt eligible people onto the council.**

We are particularly keen to have representatives from the Rhodes Minnis area and those with an interest in the following areas: environment; planning historical and social.

The elections for Folkestone and Hythe District Council will still take place on May 4th.

## **NEIGHBOURHOOD PLAN**

We are happy to share that Lyminge Parish Council has appointed Alison Eardley to act as a consultant in creating and implementing a neighbourhood plan.

Alison is an award-winning planning consultant who has been instrumental in helping other localities achieve their visions for their respective areas.

This is an exciting project and will be overwhelmingly positive for the parish. Updates will be given primarily via the Lyminge Parish Council website and the Lyminge newsletter.

### **REMEMBER:**

You must present photographic ID at the polling station to be able to vote.

[www.folkestone-hythe.gov.uk/voter-id](http://www.folkestone-hythe.gov.uk/voter-id)



## KNOW YOUR COUNCIL: CLLR ROGER JOYCE

Roger is a Chartered Architect who ran his own practice locally and now works as a consultant from his home in Etchinghill.

He is an active member of the community and has been Chair of the Sandgate Society, created the 'Shepway HEART Forum' and has recently joined Lyminge Parish Council with the specific ambition to get a 'neighbourhood plan' underway,

Married to Liz, Roger has family in the immediate area, and enjoys spending time with his 3 grandsons.

Learn more about your councillors on the Lyminge Parish Council website.

## OUTGOING COUNCILLORS

At each election we welcome new councillors and say goodbye to outgoing councillors. We thank the councillors who are leaving us for their passionate, hard work and commitment to the parish.

## WEBSITE UPDATES

This is a reminder that if you are interested in the history and heritage of the parish, there is lots to read on the Heritage and Visit sections of the parish council's website.

This has all been newly written so it reflects all the amazing discoveries made in the village over the past few years. We hope this will be of interest to residents and visitors alike.

## ANTI-SOCIAL BEHAVIOUR

There has been a disappointing outbreak of graffiti across Lyminge over the Easter holidays. We try hard to keep the parish looking good and this mindless vandalism is a burden on everyone as it affects the environment in which we all live and needs to be cleaned up.

Please contact us if you know who the culprits are or have any relevant information.

## MAY MEETING DATES

Annual meeting of the Parish Council - 15th May 19:30 - 21:30 - Main Hall, Tayne Centre, Lyminge

Annual Parish Meeting - 30th May 19:30 - 21:30 - Main Hall, Tayne Centre, Lyminge



## Thoughtful Food....

...is a group of local volunteers looking at our food, and how this impacts climate change. Our aims are to support people to produce more of their own food, and to shop locally, sourcing seasonal produce. We also run a community allotment in Lyminge and welcome new members.

**Contact:** thoughtfulfoodgroup@gmail.com or on Facebook and Instagram @thoughtfulfoodgroup

Next **Thoughtful Food** meeting, **Tuesday 2nd May, 7.15pm**, at the Coach and Horses Public House

## Feeding Folkestone

Thoughtful Food were delighted to be invited to the inaugural meeting of the Feeding Folkestone members group. While Feeding Folkestone has existed for a few years it now feels there is an appetite and definitely a need, to turn up the heat and join together all the wonderful food focused groups in the area.

Feeding Folkestone already has an ambitious strap line, ' We exist to reconnect our community with the land, food and each other, to build a sustainable, resilient local food system that tackles the social and climate crisis through education, food growing and sharing, with strategic partnerships that use time and money to do good.' But its ambitions now are HUGE, that in 10 year's time 80% of the food consumed in the Folkestone area will be sourced from a 20 mile radius.

One idea is to seek funding for a zero carbon logistics system that will collect and distribute surplus food within the area, whilst also collecting and delivering waste food for community composting.

There will be many tasks but one of the first will be to produce a map that links together all the food initiatives in the area. This will take the form of a traditional map, in hard copy and online but FF also plans to seek funding for local artists to work with schools and community groups to produce more community informed maps. Look out for information in future newsletters about how you can be involved in this.

Further information can be found at: [feedingfolkestone.net](https://feedingfolkestone.net)



**May is busy, busy** - With thanks to <https://www.realseeds.co.uk/Monthlysowing.html> for this useful information

- French, runner and broad beans, mangetout & podding peas. But still think about sowing in modules/pots if you have trouble with slugs/mice etc
- Maincrop sowings of root crops - carrots, beetroot, leeks, radishes, turnips etc
- Herbs including parsley, coriander and others
- Swiss chard & leaf beet
- All the brassicas can still be sown this month for overwintering - kale, summer and winter cabbages, brussels sprouts, purple sprouting broccoli, calabrese and cauliflowers
- Keep sowing salads, especially lettuce & rocket if you like it, regularly. Much better a small sowing every 2-3 weeks than a huge patch that bolts before you can eat it
- Early sowings of fennel – if you have trouble with it bolting, wait until mid-June
- Sweetcorn – but only sow direct if the weather, and soil, are warm, otherwise start it off in modules or small pots.



**Don't forget to come and PICK UP A PLANT from 10am on Saturday 20th May in Tayne Field**

Wild Garlic will be filling the air with its beautiful scent this month. Free food and a great excuse for a walk. Choose the garlic that is higher up from ground level and away from a road. Try making some wild garlic pesto, great for mixing with pasta, adding to quiches, or go wild, try adding to mash potato, stirring into boiled carrots, I could go on.....

## Wild Garlic Pesto

In a food processor or liquidiser, whizz up, two good handfuls of wild garlic, washed and broken by hand into manageable pieces, 4 oz of parmesan cheese in smallish chunks, 3 oz nuts of your choice, walnuts, pine nuts, almonds, any. A good glug of olive oil. Season to taste and hey pesto!



**Very Best Wishes from Thoughtful Food**





# Lyminge Primary School's Eco Team Update

*Claire Norman*



We have had a busy year so far and the team is working towards gaining an Eco School accreditation by focusing on a number of projects that will help the school achieve this goal. The team aged from 6 – 11 years old are passionate about encouraging all children in school to be aware of the small changes they can all make to create a more eco-friendly environment. They aim to help our school community gain skills and knowledge about how to make our learning space 'greener'.

The team's first mission this year is to ensure that our outdoor area is not only a safe and fun place to learn, but that the area is a space that allows a wildlife-rich biodiversity environment where children can investigate and explore. As such, a task team has been created to blitz the pond area, cleaning the pond and restoring it to good health as well as preparing the surrounding area to attract a range of wildlife.



The Eco Team is also working hard in conjunction with the School Council to help monitor and manage the litter within school and on Tayne Field. They do regular litter picks and then analyse the amount and type of items they are finding. This is hopefully going to enable them to find ways of keeping the areas greener in the future.

A 'Walk on Wednesday' initiative has started this term which rewards children who are able to make small changes to their journeys to and from school. In order to promote a more active lifestyle and to help reduce carbon emissions, the Eco Team are encouraging pupils to walk, cycle or scooter, at least part of the way to school.

If anyone in the community would like to get involved or can help us on our quest to become a green school then please contact Claire Norman on [clairenorman01@gmail.com](mailto:clairenorman01@gmail.com)



## Reminder: Our Wild Acre 2023



As advertised with full details in the March newsletter, if you can commit a patch of your garden or land, or a window box or anything else, to be a wild area from March until at least August, please let us know by registering online <https://forms.gle/1vegnWHLKwFZ4wCE9> or scan this QR code. This is also available through the Lyminge Climate Action Facebook Page or by emailing [lymingebiodiversity@gmail.com](mailto:lymingebiodiversity@gmail.com) or telephone 01303864347.





**Elham**

**Summer food & craft festival**

Sunday 11 June 11am - 2pm  
VILLAGE SQUARE & CHURCH

30+ STALLS

King's Arms BBQ

Strawberries and Cream

Chancel Café

LOCAL PRODUCE  
CHEESE - BREAD  
OLIVES - CAKES  
LAMB - PORK  
EGGS - CHUTNEYS  
PLANTS  
GATEHOUSE FARM  
VJ GAME & MORE...

Raffle  
Handmade Crafts  
Church Bells

SUPERB PRIZES  
in aid of  
the Shepway  
Food Bank

Supported by  
colebrook sturrock.com

For more information: Julie Woodgate, Elham Farmers' Market manager,  
julie3woodgate@gmail.com KFMA.org.uk/elham facebook.com/elhamfarmersmarket

**Pilates +  
Tayne Centre  
Lyminge**

**All abilities welcome**

**Wednesday  
10:00 - 11:00**

**Contact Julie. 07825109670**

**Email :  
pilates.mbs@gmail.com**

**Railway Museum**  
THE ELHAM VALLEY LINE TRUST

**Countryside & Craft Centre**

**Get on Parade!!  
20<sup>th</sup> and 21<sup>st</sup> May**

**Military Event**

Many military vehicles and personnel on display around the site. Armoured miniature train rides (weather and staff permitting).

[www.elhamvalleylinetrust.org](http://www.elhamvalleylinetrust.org)

**ELHAM CONCERT**  
ST MARY'S CHURCH  
SATURDAY  
20TH MAY AT 3PM

**MORE QUODLIBET & CAKE**

An entertaining mixture of songs from Quodlibet's four voices - together and in solos and duets - topped with a rousing organ piece and the famous Great Meat Pie poem rounded off with tea and cake!

Belinda Lewis, Jane Farrell, Richard Pond, Peter Cox  
Director: Peter Giles, Anthony Trinkwon - organ and piano

Tickets: £10 from Anthony 07752 142106  
[atrink1@hotmail.com](mailto:atrink1@hotmail.com) or at the door

**Letters To the Editor**

With reference to the meeting with Pentland Homes report, I would make the following comments. I don't consider Lyminge to be underdeveloped! I note the drains can't cope with this development as reported at the meeting . Do not forget the houses to be built at the golf course entrance and the 30 or more to be built on the nursery site at Etchinghill also using the same foul water drainpipe. How will pumping out the foul water tanks of the new development be synchronised with the other new estates and or rain downpours ? I see that this development is supposed to take the pressure off further greenbelt development. I thought that was the reason for the newly approved Otterpool town development. How many times can this reason be used to allow a new estate being approved ?

Yours *A Gledhill*

Editor: [pbarnes20@icloud.com](mailto:pbarnes20@icloud.com)

It has come more noticeable through both emails and personal observations that there is increasing evidence of people being selfish and inconsiderate, reflecting an increase in antisocial behaviour.

Examples of this type of behaviour can be seen through parking on the pavement (e.g. Station Rd, Palm Tree Way, Mayfield Rd), with two thirds of the width of car on the pavement, tagging of street furniture/sign-age (Tayne Field, BT boxes), drawing of a face on mirror by Coach & Horses, smashed mirror at entrance to FuseRail, Woodland Road, white graffiti on upper Woodland Road road surfaces, vegetation sprayed with white paint. Please look after and respect your environment and community!!

Yours *The Lyminge Association*

Editor: See P16 of this newsletter



# THE PHOENIX THEATRE COMPANY

presents a Murder, Mystery play

## MURDER at the MANOR



FRIDAY 16th and SATURDAY 17th JUNE 2023 at 7.45pm

at LYMINGE VILLAGE HALL

Seating at tables ~ bring your own supper & cutlery

Work with the rest of your table  
to solve the mystery and win a prize!

Bar available

Reserved Tickets £8.00 available from Laing Bennett  
Estate Agents, Lyminge from 30th May

## BOYKE MANOR COTTAGES

Family-run holiday lets that have been running for 12 years

Are you looking for somewhere for a break or a longer stay?

- Two cottages available in the Elham Valley (Ottinge)
- One sleeps 6 and the other sleeps 4
- Can be let individually or together
- Fully equipped holiday cottages rated as 4 star

Provides relaxing holidays in a peaceful rural setting, close to the coast and with a wide range of places to visit in close proximity.

Ideal for a family getaway/holiday or short stays in between house purchases/whilst renovations are being undertaken.

Much more economical than hotels and the accommodation offers very high standards.

For further details, contact Paul on 07860 452640 or visit [www.boyke-manor-cottages.co.uk](http://www.boyke-manor-cottages.co.uk)

## HELP!!

### ORIGINAL IDEAS ARE NEEDED FROM NEW FRESH VOLUNTEERS FOR THE SURVIVAL OF THE LYMINGE ASSOCIATION

We are actively looking for new members to help us remain current, functional and in touch with the communities in which we live.

If you are interested in helping us, please contact Peter Barnes, 01303863737, 07808775302

[pbarnes20@icloud.com](mailto:pbarnes20@icloud.com)

Ivy Lodge, Woodland Road, Lyminge, CT18 8EP

We would be most grateful for your ideas!!

Editor: [pbarnes20@icloud.com](mailto:pbarnes20@icloud.com)



JOIN US AT THE PARK TO WATCH QUALITY CRICKET  
& ENJOY A DRINK WITH FRIENDS

\*\* BAR OPEN EVERY FRIDAY 6.00PM UNTIL LATE \*\*

\*\* CLUB SOCIAL MEMBERSHIP ONLY £5.00 \*\*

\*\* CLUB VENUE AVAILABLE TO HIRE FOR WEDDINGS AND PARTIES \*\*

- JUNIOR CRICKET TRAINING SESSIONS EVERY FRIDAY, 6.00 - 7.30PM
- QUALIFIED AND FULLY ACCREDITED ECB AND DBS CHECKED COACHES
- ALL CHILDREN YEARS 3-10 WELCOME
- SKILLS DEVELOPMENT, CONFIDENCE BUILDING AND TEAMWORK
- U11, 13 AND 15 TEAMS PLAYING IN LOCAL LEAGUES
- EQUIPMENT SUPPLIED
- NEWCOMERS WELCOME



REGISTER NOW VIA THE CLUB WEBSITE OR QR CODE  
[HTTPS://SIBTON-PARK-JUNIORS-CC.PENDLESORTSWEAR.CO.UK/SIGN-ON/](https://sibton-park-juniors-cc.pendlesportswear.co.uk/sign-on/)

### MAY 2023 FIXTURES

TUESDAY 2ND	U15 FRIENDLY VS NONNINGTON	6.00 PM
FRIDAY 5TH	U13 SAXON SHORE CUP VS ST MARGARET'S	6.00 PM
SUNDAY 7TH	U11 FRIENDLY VS HYTHE GREEN	9.30 AM
WEDNESDAY 10TH	U11 SAXON SHORE CUP VS DEAL VICTORIA B	6.00 PM
THURSDAY 11TH	U13B ASHFORD LEAGUE VS WYE	6.00 PM
SATURDAY 13TH	KCL DIV 5 HURRICANE VS WALMER	12.30 PM
FRIDAY 19TH	U13 SAXON SHORE CUP FINAL (TBC)	6.00 PM
WEDNESDAY 24TH	U15 ASHFORD LEAGUE VS FOLKESTONE	6.00 PM
SATURDAY 27TH	KCL DIV 5 HURRICANE VS BORSTAL	12.30 PM
SUNDAY 28TH	U11 SAXON SHORE CUP FINAL (TBC)	9.30 AM

SIBTON PARK CRICKET CLUB, LONGAGE HILL, LYMINGE, FOLKESTONE, KENT CT18 8HD  
CONTACT: [SIBTONPARK@OUTLOOK.COM](mailto:SIBTONPARK@OUTLOOK.COM)



### The Lyminge Gardeners' Society Monthly meeting

### 'Creating With Clay'

A fruitful evening was recently spent with local ceramicist, **Annie Begley** - using clay to make items suitable for use in the garden.

The **LGS** meets at 7.30pm on the third Tuesday each month in the **Tayne Centre**.





**Freshly Prepared  
Breakfasts & Light Lunches  
Home Baked Cakes  
Vintage Afternoon Teas  
Coffees  
Teas**  
**Takeaway Available  
Private Functions**

Open Tuesday to Saturday  
9am to 3pm  
Dog Friendly

THE COFFEE CABIN TEA ROOM LTD.  
CANTERBURY ROAD, LYMINGE, KENT.  
CT18 8HU. 01303 864222  
Instagram @thecoffeecabintearoomltd  
Find us on Google Maps

**Jazz** The George Inn  
Stone Street  
CT4 6DF

Every Tuesday 8.30pm and  
Thursday 8.15pm

Come early and enjoy home cooked  
English food, local ales and fine wines.

Open for food from 12 noon and  
6pm, Tuesday to Saturday  
Sunday Roast from 12 noon

Best to book to avoid disappointment

Phone Michael: 01227 709170  
or E-mail:

landlord@thegeorgeonstonestreet.co.uk  
www.thegeorgeonstonestreet.co.uk

Find us on Facebook:  
The George Inn on Stone Street

**POP ME ON THE FRIDGE**

**MOBILE  
FISH &  
CHIPS**



**EVERY  
THURSDAY**

From  
**11.45am - 12.45pm**

**Age UK Car Park  
Eat In Cafe  
or Take Away**

 **Lyminge  
ageUK**

**STREETZ2STREETZ**  
TELEPHONE:-

**07955 926 835**


Major Cards Accepted 

**THE PUP HUT**

HOLLISTIC GROOMING SPA  
& WELL-BEING

- IPET NETWORK level 3 in dog grooming
- Meet and Treat mini consultation
- 1-to-1 grooming sessions
- Canine centred approach in a calm environment
- Focus on humanity over vanity
- Spa treatment available to aid coat condition and health

THE PUP HUT IS BASED IN HAWKINGE  
FOR MORE INFORMATION PLEASE CALL, TEXT,  
EMAIL OR FIND US ON FACEBOOK.

 07887447387

 thepuphut@outlook.com

 the pup hut, listed grooming spa & well-being

**INTRODUCTORY OFFER**

Free cucumber & melon facial & nose paw balm  
treatment with your pups first groom....

**PLUS**

Get your pup VIP pawpawed...

With a loyalty card!

VIP pup pampers are natural product of a mud treatment  
to suit your pups coat type & health needs, a cucumber &  
melon facial and soothing nose & paw balm



# HEAVER & LINCH

Bespoke Handmade Kitchens & Furniture

Bespoke Handmade Cabinet Makers based in Lyminge, covering Kent and the South East. Over 30 years experience in creating stunning solid wood kitchens and furniture. Get in touch for any advice, recommendations and a free quote.

Tel: 07832 360 603 or 07832 363 963

Email: [heaverlinch@outlook.com](mailto:heaverlinch@outlook.com)

Website: [www.heaverandlinch.co.uk](http://www.heaverandlinch.co.uk)



Don't be led up the garden path...

...choose an agent that gives straight forward, honest advice.



Call today for a free, no obligation valuation

Bridge Office - 01227 831999  
[bridge@colebrooksturrock.com](mailto:bridge@colebrooksturrock.com)  
88 High Street, Bridge, CT4 5LB

Elham Office - 01303 840422  
[elham@colebrooksturrock.com](mailto:elham@colebrooksturrock.com)  
Bank Buildings, Elham, CT4 6TD

[colebrooksturrock.com](http://colebrooksturrock.com)



## Kent's Leading Mobility Specialists

Over 200 new & used scooters available

**USED SCOOTERS FROM £395**

**MADE IN BRITAIN**

**BEDS FROM £1395**

**CHAIRS FROM £595**

Huge range of Shoes & slippers for problem feet

**HOME DEMONSTRATION LET US COME TO YOU**

**STAIRLIFTS**








**FOLKESTONE STORE**

**Tel: 01303 274574**

**[www.safehandsmobility.co.uk](http://www.safehandsmobility.co.uk)**

**[folkestone@shmobility.co.uk](mailto:folkestone@shmobility.co.uk)**

Compass House, 347-349  
Cheriton Road, CT19 4BP

**ALSO AT  
BIRCHINGTON**





## Lyminge Baby & Toddler Group

We are excited to welcome you to our local parent, baby and toddler group.

Please come along, meet new mums and dads for a chat and a play.

It costs £3.50 with tea and coffee provided along with snacks for your child.

Tuesdays, term times only. 10am to 12noon at the Tayne Centre.

First session is free.

Follow us on Facebook and Instagram.

Contact Ellen at 07870405567.

Early Years Education & Day  
Care for Children Aged 2-5

# LYMINGE

  
Pre-school

Every Day Adventures  
at our **OUTSTANDING** pre-school

**COUNTRYSIDE SETTING**

**FANTASTIC FACILITIES & GARDENS**

**QUALIFIED & LONGSTANDING TEAM**

**WRAP AROUND CARE 8-5PM DAILY**

**HOLIDAY CLUB OUTSIDE OF TERM TIME**

**AFTER-SCHOOL CLUB**

**PARENT PORTAL**



Rated **OUTSTANDING**  
by OFSTED 2022

We'd love to hear from you:

 01303 863149

 [LYMINGEPRESCHOOL@GMAIL.COM](mailto:LYMINGEPRESCHOOL@GMAIL.COM)

## Etchinghill

10.15-11.30am every Wednesday  
at Etchinghill Village Hall  
£2.50 per child

Come along to Etchinghill's Parent and Toddler group welcoming children from 0-3. We have plenty of toys and snacks for the little ones, and there is always tea coffee and cakes for the adults. For further information call Chrissy on 07811682045 or Ruth on 07817777975, look at Parent and Child Etchinghill Facebook page or email us as parentandchildetchinghill@gmail.com.



## The Lyminge Newsletter

can be viewed online (and in colour) at  
[www.lyminge.org.uk/newsletter/](http://www.lyminge.org.uk/newsletter/)  
and by then clicking on the current issue.  
Back-issues can also be viewed via this route.



## BADGERS BRIDGE NURSERY

*" Bridging the indoor and outdoor learning environment for children in their Early Years"*

Badgers Bridge is set in the idyllic countryside of Postling, just outside Lyminge. We are a small and friendly Preschool who blend the Montessori principles with the outdoor learning ethos.

  
**Ofsted**  
Outstanding  
Provider

We were awarded Outstanding by Ofsted in 2018 in every area. This is a real achievement and we are really proud of the staff who work tirelessly to provide a stimulating and caring environment for the children of Badgers Bridge. The inspector was particularly impressed with our Forest School. *"Children enjoy limitless opportunities to explore, investigate and work together in the natural woodland environment. Staff skilfully inspire children to develop a significant understanding of the world in which they live".*

*".....exemplary relationships between staff provide excellent role models for children and promote high standards of behaviour. Children make outstanding progress during their time at the nursery".*

**Exciting news! We have opened our new setting in Elham. We offer the same unique outdoor experiences for children from 20 months old. Come along and see us at The Gore!"** So please call or email us:

Email : [badgersbridge@gmail.co.uk](mailto:badgersbridge@gmail.co.uk)

Website : [www.badgersbridge.co.uk](http://www.badgersbridge.co.uk)

Tel : 01303 862951

**Postling Village Hall, The Street, Postling CT21 4EU**

Ofsted Registered : 395128

Companies House Reg : OC375571



**With our excellent local knowledge & experienced staff we will get you moving**

✓ **Free** professional photography, property floorplan, Rightmove premium listing & social media advertising

**01303 863393**

The Estate Office,  
8 Station Road,  
Lyminge,  
Kent CT18 8HP

Follow us on  
social media



[www.laingbennett.co.uk](http://www.laingbennett.co.uk)

## The Lyminge Association

*We're here to support and develop our community!!*

### Contacts:

**Chair:** Nancy Benham 01303 863076 or 07840796383  
nancybenham@aol.com

**Vice Chair:** Peter Barnes 01303 863737 or 07808775302  
pbarnes20@icloud.com

**Treasurer:** Martin Fry 01303 863177  
martin@Rhodesminnis.org.uk

**Committee Members:** Adrian Willcox, Marian Chubb, Richard Chubb, Dave Hunt-Cooke, Gillian Heywood, Robin Mackonochie, Derek Smith, Ray Smith, Penny Stephens

**Newsletter:** As for Peter Barnes above

## ETCHINGHILL VILLAGE HALL HIRE FEES

The next time you are thinking of holding a function why not try Etchinghill Village Hall, which holds the highest Hallmark accreditation level (Hallmark 3), with its excellent facilities, including ample parking space.

The standard hire charge for the main hall and kitchen are:

ANY DAY OF THE WEEK' ANY TIME £12 PER HOUR

No winter supplements. No extra charges.

Ideal for family parties and get togethers.

The use of a separate Committee Room is also available.

For all bookings or enquiries please contact:

**The Duty Manager on 07514 758936**



**Large hall with stage, new kitchen and flexible hire**

Excellent parking facilities, disabled access, proximity to playgrounds and playing fields. Beautiful countryside location.

### Capacity:

200 people dancing / audience seating, 100 with tables  
Small rooms available for up to 50 seated

Find out how we can help you with your next event:

**BOOK ONLINE:** [lymingevillagehall.org.uk](http://lymingevillagehall.org.uk)

**EMAIL:** [admin@lymingevillagehall.org.uk](mailto:admin@lymingevillagehall.org.uk)

**INFO:** 07525 909185

Full pricing can be found on our website.

### Guideline prices:

Main Hall hire: £88.40 (Fri / Sat evenings)

£47.60 (Sat / Sun morning or afternoon)

Find us on Facebook

Registered charity 28145

## Rhodes Minnis Village Hall

Charity No.800345

Rhodes Minnis Village Hall is located 2kms (1¼miles) from Lyminge and just off Longage Hill and Whitehorse Lane in Chapel Lane.

The hall, which holds Hallmark accreditation, is ideal for children's parties, band practice, quizzes, meetings, wedding receptions, fundraising events and much more. It has a fully equipped kitchen.

### Rates

Mon to Fri £18 per session £48 all day

Sat & Sun £23 per session

£33 for evening session and £69 all day

### Sessions

AM session 08.30 - 12.30

PM session 13.30 - 17.30

Evening session 18.00 - 23.45

Separate rates for Bank Holidays and New Year and special rates for regular users.

For all bookings and enquiries please contact:

**Mick & Dorothy Athow: 01303 862616**

**e-mail: [booking-rmvh@outlook.com](mailto:booking-rmvh@outlook.com)**

## TAYNE CENTRE

### HALL HIRE

*Previously known as the Lyminge Methodist Church Hall*

**Clayson Hall:** £15 per hour

**Rigden Room:** £10 per hour

**Wesley Room:** £10 per hour

**Church:** £20 per hour

### Enquiries:

**Tel: 07716 521 405**

**Email: [maryeblanch@outlook.com](mailto:maryeblanch@outlook.com)**



## Lyminge Library Opening Times

Monday 10am - 2pm

Tuesday 12noon - 5pm

Wednesday 10am - 2pm

Thursday 10am - 5pm

Friday 10am - 2pm

Saturday 9am - 1pm

**Tel: 03000413131 [lymingelibrary@kent.gov.uk](mailto:lymingelibrary@kent.gov.uk)**



## Bus times

for buses from Lyminge The Sidings to Folkestone town centre via Etchinghill & Cheriton High Street

**MONDAYS TO SATURDAYS except Bank Holidays**

There are route 17 buses at 0705 (not Saturdays), 0749, 0909, 0934 (not Saturdays), 1004, 1034, 1104, 1204, 1304, 1404, 1514, 1614, 1619 (schooldays only), 1654 (schooldays only), 1719, 1749, 1834, and 1929.

There are also route 18 buses to Sandling Station & Hythe - for times see our website or call the number below.

**SUNDAYS & BANK HOLIDAYS**

There are route 17 buses at 1032, 1302, 1532 and 1802.

for buses from Lyminge Wesley Terrace to Canterbury city centre via Elham, Barham & Bridge

**MONDAYS TO SATURDAYS except Bank Holidays**

There are route 17 buses at 0727 (schooldays only), 0732, 0752, 0903, 0938, 1028, 1128, 1235 (1228 on Saturdays), 1335, 1443, 1608 (1613 on Saturdays), 1703, and 1803.

There are also route 18 buses to Canterbury via Stelling Minnis and Bossingham - for times see our website or call the number below.

**SUNDAYS & BANK HOLIDAYS**

There are route 17 buses at 0903, 1133, 1403, and 1633.

These bus times will operate from 12 February 2023.

0345 241 8000 @StagecoachSE  
customerhelpSE@stagecoachbus.com  
stagecoachbus.com

- Carpets Supplied & Fitted
- Carpets Professionally Cleaned
- Carpets Whip Edged & Cotton Bound

Whatever your carpet need, give us a call for a **FREE** estimate / assessment.

Over 50 years combined experience.

**07943 764 442**  
Email: [kingdom.carpet.co@gmail.com](mailto:kingdom.carpet.co@gmail.com)

- Gas & Oil Boilers
- Central Heating
- Hot Water Systems

01303 901070  
service@georgemiller.co.uk  
248 Cheriton Road, Folkestone, CT19 4DN

georgemiller.co.uk

APPOINTMENT NOT ALWAYS NEEDED  
WEDDINGS & SPECIAL OCCASIONS  
SHELLAC NAILS  
GENTS WELCOME  
FREE WIFI

4 Station Road, Lyminge  
Folkestone  
Kent, CT18 8HP  
01303 647 222  
info@snippersandclippers.co.uk

Find us on Google+ | Find us on facebook

## Anna Lindley (RVN, Dip.A.Physio)

For dogs, cats & small pets

- Offering physiotherapy assessment and treatment of dogs, cats and small animals.
- I use a combination of manual therapy, laser, ultrasound therapy, TENS, kinesiology tape and exercises to rehabilitate your/their pet depending on the needs. I also address environmental and exercise factors that can help your pet with their condition.
- I now have a **NEW** treatment room where I can offer further assessment of your pet using a stance analyser. This identifies the mildest of lameness and addresses areas of compensation. I also offer home visits. Physiotherapy can help with arthritis and the ageing pet, post operative orthopaedic surgery, neurological, spinal conditions and many more conditions.
- I am fully insured with over 15 yrs experience working with animals. I am a member of the International Association of Animal Therapists (IAAT).
- For more information please visit my website: [annasanimalphysio.co.uk](http://annasanimalphysio.co.uk) or feel free to contact me on 07944 606453 or [anna@annasanimalphysio.co.uk](mailto:anna@annasanimalphysio.co.uk)

## D.M.B. Plastering

All aspects undertaken  
*Interior. Exterior. Plastering. Rendering.  
Coving. Ceilings. Wall. Floors  
Finest quality assured. CSCS Certified.*  
30 years experience.  
Free estimates. Reliable service. Fully insured.  
Call **David** on **07818 607209**

To advertise in this space, please contact

Peter Barnes  
pbarnes20@icloud.com  
01303863737  
07808775302

FILEHURST ASSOCIATES

## YOUR COMPLETE REMOVALS AND STORAGE SOLUTION

01303 239990 info@filehurst.co.uk

Domestic & Business Removals - UK wide & France  
Business Document Storage

Call Nick for a no-obligation quote.



Forest Lodge  
Counselling & Therapy

### Need to talk?

Confidential and compassionate qualified counsellor here to listen.  
Please call or text Natasha on 07593 794321  
All messages replied to  
Email: forestlodgetherapy@gmail.com  
www.forestlodgecounselling.com



## KJB GARDEN SERVICES

Weeding, Pruning, Mowing, Hedge Cutting & General Maintenance  
**01303 862181** or **07704 989 402**  
Over 35 years experience

## B.M. Plumbing & Maintenance Services

Local Lyminge Tradesman  
Plumbing and heating works. Complete bathroom install including tiling. General building maintenance undertaken. No job too big. No job too small.  
Cheaper rates for senior citizens



**07890854128 Benmillsplumbing@hotmail.co.uk**

House Clearance covering South East Kent.....and beyond!  
**CAROL CREES CLEARANCES**



- Est. over 30 years  
Full/part house clearance  
Fair prices paid  
Antique/Vintage/Retro/Modern  
Registered rubbish carrier

Contact **Simon Cullen** on **07745 421680** or **sijnzo@aol.com**



www.eastkentfootcare.co.uk

**07745 532075**

**Podiatry, Chiropody,  
Foot Health**

Treating and managing foot and nail conditions, corns, callus, insoles, ingrown nails, diabetic foot care



Total garden care for all your needs

## TIM MILLETT

Grass Maintenance, General Gardening, Small & Medium Size Tree Work, Stump Grinding and Wood chipping  
Fencing Repairs & New Installations  
Turfing, Hard & Soft Landscaping  
Free Estimates - Fully Insured

**01303 863676** **07752 880583**  
Email: **info@tmhorticulture.co.uk**

## N.P.C.

**Domestic Appliance Services**

*Service and repair of washing machines, tumble driers, dishwashers, cleaners and small electrical work.  
For a prompt and friendly service*

Call Neil Collard 01303 892234 or 07798716044  
or Google me on Yell.com



**Your Local Electrician  
For all your electrical needs**

- 18th Edition/Part P Registered
  - Insured & all work guaranteed
  - All electrical work carried out including EV charging points
  - Covering Lyminge, Etchingill & surrounding villages
- Call for a free, no obligation quote and to discuss your electrical requirements.



**07878 457018** **01303 814372**

**info@hughes-electrical.co.uk** **www.hughes-electrical.co.uk**

## JON DAUGHTERS - Local Builder

All aspects of general building works undertaken including: roofing, kitchens, bathrooms and small extensions  
**Trading for over 30 years Free quotes, no obligations, fully insured**  
**Telephone: 01303 863371 Email: daughters777@hotmail.co.uk**





**APX PROJECT  
MANAGEMENT**

From design to build, we use trusted quality trade professionals along with reliable suppliers to ensure budgets are met, with high standards maintained. If you're looking to –

- Extend your property
- Carry out an external or internal refurbishment
- Convert an existing building into a new dwelling

Please contact: paul@apxprojectmanagement.co.uk 07487 364155



**Dennis Huntley  
Chimney Sweep**



Wood burners and multifuel stoves installed  
Hearths and fireplaces built & installed  
Over 40 years' experience

**01303 862 343 • 07850 784 365**

dennis.huntley@talktalk.net www.dennishuntley.co.uk



**Auto Economy Centre**  
Fully equipped Mechanical Repair & Service Centre  
With the latest diagnostic equipment  
Half price MOTs when booked with any service  
**01303 863656**  
Orchard Garage, Canterbury Rd, Etchinghill  
www.autoeconomycentre.com

**AIR LINK CARS**

(You pack up, we pick up)  
Airport, Seaport & Long Distance Travel Specialists.  
The Family Run Business where service really counts  
Estate cars and People Carriers



Fixed price 24hrs a day. No extras.  
Written Confirmation of booking.  
For the Easy Airport Link, Think AIR LINK!  
**01303 670370 - 07766 824 474**  
airlinkcars@yahoo.com

**Gosbee  
LANDSCAPES**

FENCING | GATES | PAVING | RESIN BONDING  
• Over 35 years experience • Jacksons Approved Installer  
• Marshalls approved • Check-a-trade registered

Call Martin Gosbee: 07974 835 511 | 01303 863 337

GOSBEECONSTRUCTION@GMAIL.COM  
GOSBEE.CO.UK



**Sunhouse Electrical**

Your local reliable Electrician  
Part P Registered & Elecsa Approved  
On Electrical Safety Register & Fully Insured  
For a free quotation call James on

**01303 766333**

www.sunhouse-electrical.com

**KW CONSTRUCTION**  
PLASTERING & RENDERING SPECIALIST

ALL GENERAL BUILDING INCLUDING:  
ROOFING, BRICKWORK, TILING, PATIOS,  
LANDSCAPING, SCREEDING, GROUNDWORK,  
DRAINAGE, EXTENSIONS, RENOVATIONS,  
REPAIRS & MAINTENANCE.

30 YEARS EXPERIENCE, COMPETITIVE RATES,  
A FULLY INSURED, PROMPT & RELIABLE  
HIGH QUALITY LOCAL BUILDER

KENNY 07743488361

**HANDYMAN  
SERVICES  
SJW**

www.Facebook.com/sjwoodhandyman  
www.Instagram.com/sjw.handymanservices  
**07796 384857**

**LYMINGE FOOD & WINE**  
**01303 862225**



Our new opening times are:  
Mon – Sat **7:00-20:00**  
Sunday & Bank Holidays  
**8:00 - 19:00**



We offer National Lottery, ATM terminal,  
Post Office & PayPoint services.



**AK Healthcare**

Tel: 07904311554 /  
07980897382  
www.akhealthcare.org.uk

We help patients suffering from a wide variety of conditions including arthritic pain, circulatory problems, frozen shoulder, back pain, sciatica and much more.

Please visit our website or give us a call for more information.

**AK Healthcare,  
Garden Suite,  
4 Station Road, Lyminge**

**Park House Sanctuary Boarding Kennels & Cattery**  
**Park House, Stelling Minnis CT4 6AN**

Brick-Built Heated Kennels. Daily Walks ~ Reasonable Rates  
Dogs must be fully inoculated. Heated Cat Chalets  
Quiet Area Inspection Invited.

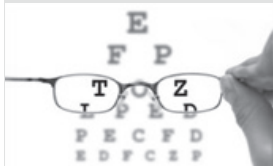
To book or for further information, call 01303 862622  
or email lord.whisky@btinternet.com  
www.lordwhisky.co.uk

**South East Aerial & Satellite Solutions**

Digital – Freeview – Satellite – Aerials  
Supply and fit of quality digital installations, FREEVIEW, SKY, aerials, poor reception and problem solving, upgrades and repairs by fully accredited engineers  
Free quotations and advice, fixed prices, fully insured



**NO CALL-OUT CHARGE**  
**07825 168010 - 01303 862361**



**HOME VISITING OPTOMETRIST - providing professional eye care in your home**

If you are over 60 years of age and no longer able to get out on your own, then you are eligible for a NHS sight test in your own home. Please call to arrange an appointment:

**Elaine Edwards BSc(Hons)MCOptom 01303 840541**

Registered with the General Optical Council (01-15421) Member of the College of Optometrists Member of the Association of Optometrists



## Snippers and Clippers Barbers - Lyminge

Please call Richard for availability  
(appointment necessary) on 07522 494969  
Thank you for your continued support

4 Station Road, Lyminge CT18 8HP

Follow us on facebook for offers

## Andy Mannering Flooring

SPECIALISING IN AMTICO AND  
KARNDEAN LUXURY VINYL TILES



- Also safety flooring, rubber flooring, etc.
- Commercial and domestic work undertaken
- No job too small
- Free estimates and advice given
- Over 35 years experience
- Fully insured

Telephone: 0797 434 7248 or 01303 863095

Email: info@andymanneringflooring.com

Please visit my website for further information and feedback  
[www.andymanneringflooring.com](http://www.andymanneringflooring.com)



## DILTON MINI SKIP HIRE

Ballast, Hardcore, Sand  
and Topsoil Supplied  
REGISTERED WASTE CARRIER

01303 812448 or 07799 433754

## Red Dragon I.T. Ltd.



- Windows, Mac & Linux Systems
- PC Health Checks
- Wired & Wireless Networks
- Website Design
- Graphic Design

T: 01303 723456 | E: info@rdit.co.uk | www.rdit.co.uk  
The Old Granary, Hanover Mill, Church Rd, Mersham, TN25 6NU

## Rhodes Minnis Cat Sanctuary



REHOMING & BOARDING CATTERY

- Our Sanctuary takes in and rehomes 250 unwanted cats and kittens each year. A variety of cats are always available to suitable homes.
- 5\* Boarding Cattery under 2018 regulations
- We are open to visitors every day from 10am-1pm & 2-4pm. No appointment needed.

T: 01303 862 243  
E: rhodmminiscats@gmail.com  
Facebook: @rhodmminiscats  
[www.rhodmminiscatsanctuary.com](http://www.rhodmminiscatsanctuary.com)

Seathwaite, Green Lane, Rhodes Minnis, Kent. CT4 6XU  
Reg. Charity No. 262245



'Helping you enjoy your garden'

## CRT Gardening

All general garden and major landscaping redesign work will be undertaken including: full or minor garden design, hard and soft landscaping, new fencing and decking installation and repairs as we are Jacksons Fencing approved installers, hedge trimming and cutting, small to medium tree work.

For a free quotation call or text Karl Dodd on 07967 442518  
or email karl.dodd@live.co.uk  
Fully Insured



Hawkinge

## Veterinary Surgery

Independently owned veterinary surgery for all types of small animals.  
Opening hours: Monday to Friday 08:00-19:00 Saturday 08:30-13:00  
24hour emergency service

TEL: 01303 764190

Hawkinge Veterinary Surgery, 9b Defiant Close, Hawkinge CT18 7SU  
[www.hawkingevetsurgery.co.uk](http://www.hawkingevetsurgery.co.uk)



**ROBERT KENT** Cert. fp  
FUNERAL DIRECTOR

Direct Cremation

£999

Fair Priced Cremation

£1950

ONE FIXED PRICE INCLUDING  
ALL CREMATION FEES

01303 684062

[RKFUNERALS.COM](http://RKFUNERALS.COM)

## SCRUBBERS - Est. 1988

THE HOME AND COMMERCIAL CLEANERS

One off, regular or moving day 'Blitz'

Oven cleaning - Ironing

Carpet cleaning and more...

For a friendly and reliable service

Free Estimates

Tel: 01303 249288 or 07834 128671

## Computer support & repairs by local people

Customer service is our priority

- \*Remote IT support for business or home
- \*New & refurbished sales
- \*Call-outs for business or domestic users
- \*Preventative maintenance & upgrades
- \*Repairs to most phones, tablets & devices

enquiries@thecomputerpeopleltd.co.uk



Church Approach,  
New Romney,  
TN28 8AS  
01797 363385



Acrise Electrical Services Limited

Design - Install - Maintain

Tel: 01303 656007 Mob: 07803 421240

Email: info@acrise-electrical.co.uk

Website: [acrise-electrical.co.uk](http://acrise-electrical.co.uk)

Domestic, commercial, industrial & agricultural electricians serving the Elham Valley and surroundings.

## Tressenden Designs

A seamstress and costume maker with 8 years of experience.

- ♦ Clothing alterations ♦ Repair work undertaken ♦ Made-to-measure; create a bespoke piece for those special occasions
- ♦ Modern and vintage designs ♦ Costumes, ball gowns and wedding dresses

For more information or a quote please contact Amy on: Mobile: 07853 202304 Email: amy.louise.ford@hotmail.co.uk







# T.M. GRIGGS



01303 489795 07854 098395  
tobystreesurgery@gmail.com

**Garden Clearance - Turfing - Hedge Cutting  
Tree Work - Stump Grinding - Fence Repair**

## DYNO-ROD



We've been  
unblocking  
sinks, drains  
& toilets  
in Kent  
since 1965

- Quick Response
- CCTV Drain Inspections
- Drainage Repairs
- Pre-purchase Surveys

For a FREE no obligation quote  
contact Mark or Peter on:

**01233 621108  
07557 616630**

## FRESHLOOK GARDENS

Regular lawn mowing service. Garden design. Hard and soft landscaping. General garden work, fencing and decking. Turfing hedge cutting, small and medium tree work. Water features, ponds and patios.

For free quotation ring **Danny Scott**  
**01303 242140** or **07795510093**  
**mrdanscott89@gmail.com**

Established since 1990. Fully insured.

## THE HANDY FELLOW



**A TRUSTED LOCAL SERVICE  
CALL 07534485049  
ONE.HANDY.FELLOW@GMAIL.COM**

## Computer Repairs

01303 241325  
07968 129902

PCs, MACs, Laptops, Tablets & printers,  
Upgrades & Repairs, Internet & Email, virus removal,  
Office Setup, Backup & Recovery & much more ...  
Tuition available by a qualified tutor.

Usual Fee **£55**

Web sites built & hosted from £10 per month

See [www.computers-in-lyminge.co.uk](http://www.computers-in-lyminge.co.uk) for details



## Alan Croucher Caravan Engineer

**07921 480919 - 01303 863194**  
Caravans & Motorhomes "WE COME TO YOU"  
[www.arcmobilecaravanservices.com](http://www.arcmobilecaravanservices.com)

"Your manufacturer's warranty is safe in our hands"



Local Tradesman

## J Tappenden

Established over 40 years ago

Painter/Decorator

**01303 862467  
077755 78008**



## A. J. Athow

**BUILDER & DECORATOR  
GENERAL MAINTENANCE**

Telephone: 01303 862616

Mobile: 07541 792238

Email: [tony@athow.co.uk](mailto:tony@athow.co.uk)

## Jackson Plumbing Property Maintenance

Complete bathrooms and tiling  
No job too small. Special rates for OAP's.

**Telephone: home/evening 01303 270691  
or daytime 07773 089398 or 07864 929826**

## Trevor Law Electrical Installations

Serving Elham Valley for 30 years  
Part P Registered

**07850 970087**



## Ralph Allard Chimney Sweep



All chimneys, boilers and stoves swept.  
Brush and Vacuum. Certificates issued.  
HETAS and NACS registered, fully insured.  
Member of National Association of Chimney Sweeps

**01303 844465 or 07813716654**



## JBS BUILDERS

Specialising in Driveways, Brickwork, Patios, Fencing, Landscape Gardening. Tree work undertaken (lopping, felling and clearing).

General household repairs, painting, plastering, power jetting & cleaning.

No job too small!!! All work guaranteed and insured.

**For free advice and quotations please call: 07825 168010/ 01303862361 (anytime)**



## Financial Planning

**David Gridley - Chartered Financial Planner**

Range of quality advice from a fully qualified adviser:

- Pre- and Post-Retirement Planning
- Investment Planning
- Inheritance Tax Planning

For further information, please contact our Lyminge office

David Gridley FPFS

Tel: 01303 863959 Email: davidgridley@sjpp.co.uk

**MWH**

Window and gutter cleaning service

**Mark Haley**



Lyminge and surrounding areas

For a free no obligation quote, please contact me

Mobile: 07738 479202

Home: 01303 863 702 Email: haleymark161@gmail.com

Find us also on Facebook

**Ashman Consulting Ltd**



**Straightforward I.T.**

**Advice  
Training  
Solutions  
Support**

**Steve Ashman**

**07702641981**

**info@ashman-consulting.co.uk**

**T. Metcalfe Fencing Contractors**

Approved Expert Installer for Jacksons Fencing

Established over 30 years

Fully insured - Highly experienced teams



Panel fencing, gates, decking, pergolas, post & rail, stock fencing, security, landscaping & tree surgery.

**01303 840201 07790 290 155**

metcalfefencing@btinternet.com

Proprietor - Derek Burr,  
Ash Ridge House, Elham



## Fincham Plumbing & Heating

We specialise in bathroom remodelling, including all tiling & pipework

Natural gas boiler servicing, Installation, Maintenance, Repairs, Replacement

All your plumbing requirements

Martin is a Qualified Plumber & Gas Engineer with over 30 years experience

Gas Safe, CIPHE, WIAPS registered

**Rosemary & Martin Fincham**

**07835 851 706 martinfincham@sky.com**



**Lou Lloyd**

**Carpenter**

**loulloyd@rocketmail.com**

**07984 426214**

Kitchens, Flooring, Wardrobes,  
Doors, Decking and more!

**HAND MADE CURTAINS,  
ROMAN BLINDS & SOFT  
FURNISHING**

**CURTAIN ALTERATIONS**

**TEL: VALERY WREN 01303 237755**



**D & S DOUBLE GLAZING SERVICES**

01303 863689 - 07912317915

We are a local company that specialise in double glazing repairs offering a wide range of service's that include: Replacement double glazed units - Locks - Hinges - Handles - Rubber Seals - Gaskets.

For a free estimate please call: 07912317915 or 01303 863689

or email: dsdoubleglazingservices@gmail.com



**CEDAR TREE CARE** City & Guilds

All types of tree work undertaken NPTC

Crown lifting, crown reductions,

dismantling and removals, hedge maintenance,

pollarding, stump grinding and removal, mobile saw milling,

wood land maintenance, all year round seasoned logs available

Fully insured and NPTC qualified with over 15 years experience

Call Tom: 07769 908027 email:linchlot5@gmail.com

**SPEARPOINT  
TREE SERVICES**

All Aspects of Tree  
Work Undertaken  
NPTC Qualified  
Fully Insured  
Please call **Shane** for  
a Free Quote  
**07963 203564** or  
**01303 621992**



**Sarah de Rougemont**

Craftsman/Co-ordinator

**UPHOLSTERY**

All commissions considered  
01227 455841 or 07973 377817



FULLY INSURED

## Elham Dog Training Club

Dog training and Pet care services

- Puppies from 12 weeks old
- Kennel Club Good Citizen Dog Scheme Puppy through to Gold
- 1-2-1 home-based puppy training also available
- Other pet care, dog walking and day cover available
- Other fun classes available - ask for details

Lyn Fagg 07866 234820

Email: Elhamdtc@gmail.com



FULLY INSURED





## LYMINGE THEN AND NOW

Our monthly look at how Lyminge has changed over the years, with thanks to Lyminge Historical Society.



This is a view that has changed very little in around 120 years. What is now Well House at the end of Church Road, opposite the Parish Church, used to be the Church Bakery. The shop window of the bakery is visible in the picture on the left which seems to date to around 1908. Standing outside is, appropriately enough, William Baker, and his wife Emma who worked in the business. The little boy is likely to be their son Philip. Standing in the middle is their live-in shop assistant. The little girl is unknown. The bakery also operated a tearoom at this time to cater for the many trippers who visited Lyminge by train. In the 1881 census, James Fisher who lived here was described as a grocer and baker. This was the main shop serving the village at that time.

**Shows**

### Lyminge & Rhodes Minnis

**Shows**

**Spring**

**2023**

## Easter in Lyminge



**The church candles on Easter Sunday are lit from the brazier at dawn as a symbol of Christ risen and as the Light of the World.** The fire was lit at Paddlesworth Church where people assembled just before sunrise. The fire is then used to light another lantern that is taken to the church in Lyminge to light the Easter Candle during the Communion Service.

A gathering around the cross at the Methodist Church for a short act of worship



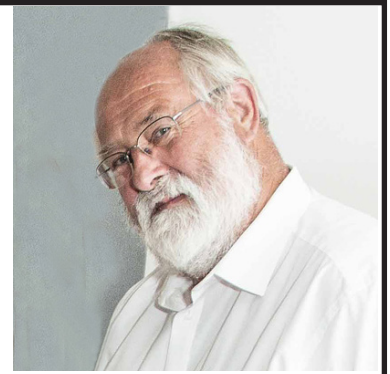
## Stream Clean 2023 - Before, The Gang and After





## DUNCAN HARRINGTON FSA, FSG, LHG

1945 - 2023



It is with great sadness that we learnt of the recent passing of Duncan.

Duncan was a resident of Lyminge for many years, and a mainstay in the recording of its historical life through the media of both talks and publications. He worked tirelessly to set up in 2008 the Lyminge Historical Society publication series '*Lyminge, a History*'. He was the general editor from 2013 to 2018 and commissioning agent throughout up to 2019. Over the twelve parts of this publication, he contributed personally to many articles on a wide range of subjects including Lyminge charities, the Lyminge Royal Observer Corps, the Elham Union Workhouse, Lyminge tithes, the old Methodist burial ground, Lyminge allotments, Lyminge football and the Elham Valley sea cadets. There is also an entertaining article entitled '*Lyminge Clerical Jottings*', as well as one on a fourteenth-century parson – Richard Uttokcestre and a notorious twentieth-century murder and suicide in Skeete. The range of his knowledge and research abilities was awesome, whether he was dealing with primary record sources or published material.

Many tributes have already been made to Duncan, and Mark Hourahane of the Hythe Civic Society and Folkestone and District Historical Society would like to put on record that "*this is a huge loss to Lyminge and local history – we lose a fount of knowledge and are reminded of him in the wealth of information he leaves us to enjoy.*" Rosemary Piddock (a local resident) reminds us that Duncan also greatly encouraged others to write and share their knowledge. He was equally at home with articles, publications and presentations for both the academic and enthusiastic amateur historian, and had the ability of judging his audience and setting the tone just right. He founded Harrington Research Services in 1969 and worked as a professional record agent for clients from then on utilising record sources from The National Archives, the British Library, along with a full range of Kent and London archives. He was equally at home translating and transcribing Latin documents and English transcriptions. To give a sense of the breadth of his knowledge, he is listed as an independent researcher for The National Archives in medieval records, legal records, maps, local history and genealogy, to name but a few. He taught extensively in the adult education sector, as well as the School of History at the University of Kent, and had significant roles in the Council for Kentish Archaeology and the Kent Family History Society. His many publications included transcriptions of Kent Hearth Tax returns, and he had a particular interest in writing about aspects of the history of Faversham.

On a personal note – Duncan lived life to the full, enjoying the good things it offered. He was an entertaining, convivial and generous companion, as anyone who has been entertained by himself and his wife Rhona in their lovely house and garden in Church Road will agree – to say nothing of their awesome Christmas Eve parties, with visitors always taking a few minutes to admire Duncan's very extensive personal library.

He will be much missed and our thoughts at this time are with Rhona, and his children Rachael and James.

**Vanessa and John Carr**

## Steam Returns to the Elham Valley

75 years ago, the railway closed and a few years later the rails were gone as well. Little remains other than a few buildings that survive and are now put to other use.

On a wet Saturday morning (15th April 2023) three little steam engines lit their fires and the smell of smoke filled the damp air. As steam was raised, they took to the track for test running. Soon people were arriving and began enjoying the sight and smells of steam trains. With the carriages attached, the first passengers were taken round the track and the queue began to grow.

Unfortunately, one of the engines decided it didn't want to play, even though the weather had improved, and had to be retired to the siding. The other carried on for a little longer while the remaining third engine took on most of the work.

Sunday was better weather-wise, but the sick engine remained at home and the other small engine felt a little under powered to satisfy the passengers. So it was down to the railway's own engine to soldier on for the rest of the day alone. So many happy customers travelled amid the smoke and smell of the returned steam train rides on the Elham Valley Railway.

Augmenting these steam trains were several miniature steam traction engines running up and down the road and parading at the Barn car park. Hundreds of people filled the two days of the Miniature Steam Event and enjoyed their rides and being close to these miniature marvels.

The Elham Valley Line Trust has now recaptured the sound and smells of steam trains in the Elham Valley. After sometime searching for a suitable steam engine, one has come along and will be seen occasionally running on the Elham Valley Railway. OK, it is not on the original line and not full size but the atmosphere it generates is so very much like the real thing.

*Bob Bailey, EVLT Trustee*

