

# THE LYMINGE NEWSLETTER

For the communities of LYMINGE, ETCHINGHILL, RHODES MINNIS and POSTLING

Produced by  
THE LYMINGE ASSOCIATION  
[www.lyminge.org.uk](http://www.lyminge.org.uk)

**March 2023**  
**From The Lyminge Association**

## **The Impact of the Removal of the Subsidy for the No 17 Evening Bus Services .....from Carol Stevens**

You may be aware that the last two evening buses for the 17 route in our area have been cancelled in both directions. This news will have significant impact on various sectors of our community:

- Young people in our area will be affected as they will no longer be able to attend after-school clubs and events, as well as not being able to socialise with friends as the last bus leaves Folkestone at 5:30 pm and Canterbury at 6:50 pm. This will surely also impact their mental health – an issue at the forefront of many people's minds.
- It also affects parents who may have to drop off or pick up their children from various activities, which may have both cost and environmental implications, at a time when we are aiming to reduce car usage.
- The elderly in our community will be hugely affected as they will be unable to go out socially without a car or a lift. This could impact their mental health as they become increasingly isolated in their homes during the evenings.
- There is also an issue with people of all ages being unable to attend medical appointments that do not fall within the daytime bus schedule, with further impact on parents needing to book appointments for their children outside school hours.
- The cancellation of these buses also affects people who need to get to work, especially those on low incomes, including healthcare workers, which results in missed shifts as carers cannot get to their clients. This is particularly evident in Folkestone, where the last bus leaves just after 5:30 pm. The use of cars for essential journeys (not just luxury), will simply increase emissions, which is in direct contradiction of KCC and the Government goal of net zero targets, including most particularly sustainable travel.
- We understand that many residents cannot afford the luxury of driving a car, and the cancellation of these buses may further exacerbate their financial situation.
- Local businesses, especially in the hospitality sector will also have problems finding suitable staff to keep their businesses viable.
- Lastly, our Ukrainian visitors in our community will be affected by the cancellation of these buses, as they will have difficulty getting to and from work. This may result in some of them needing to be rehoused in areas with better transport facilities.

It is important to note that council tax includes buses, and we have all paid until the 5th April.

We have a Facebook group – S.O.S – 'Save Our Seventeen' Elham Valley Bus, so please join and contact Carol Stevens on: [carol@c-stevens.com](mailto:carol@c-stevens.com) to voice your concerns. We hope we can at least get a public meeting with our local councillors to urge the relevant authorities to reconsider the cancellation of these buses and find a solution that is beneficial to all residents.

## **.....from Councillor Susan Carey**

KCC has removed its annual subsidy of £46,613 for the four evening services Monday to Saturday on the no 17 route. This is part of a larger saving on bus subsidies made in last year's budget savings. There's more information on this at [letstalk.kent.gov.uk/bus-funding-reductions](http://letstalk.kent.gov.uk/bus-funding-reductions)

KCC continues to subsidise some bus services in Kent but is concentrating its support on the bus services used to get children to and from school. There were no proposals to reinstate the bus subsidy at this year's budget meeting but if there is interest in having a community minibus to run services for either the whole route and/or as a feeder service to other bus routes then this may be possible. We would need volunteer drivers to make this work so if there is interest in this, please contact me at [susan.carey@kent.gov.uk](mailto:susan.carey@kent.gov.uk) Stagecoach have also been looking into the viability of offering one evening service but may not find it financially or operationally viable. NB The daytime No 17 services are well used and cover their costs. They have never had a subsidy from KCC and are run on a commercial basis by Stagecoach.

**Pentland Home 2nd Consultation - 8th March 7pm Etchinghill Village Hall  
See P15 & 19**

**Garage Sale - 25th March See P7**

# Margaret Saunders' Meanderings



Brighter days beckon so I am at Fisherman's Beach, West Hythe, today. A cold fresh breeze is coming in from the south-west with a rapidly changing sky. Scanning the horizon, the line of which is sharp and crisp, I can see a Border Agency launch to the east, near Dover and various other shipping, large and small, at different points where sky meets sea. Closer to the shore, a fishing boat is tied to a buoy. A lone fisherman sits in the lee of his small tent, way up the beach, but with his fishing rod propped up - the fine line running out across the beach and into the sea. Steady and gentle waves tumble onto the sand and pebbles. A cormorant sits atop an outfall marker, scanning the sea for food. It is low tide and strips of sand are exposed, where footprints, dog, bird and human, have left their imprints, showing who has already been here before me. Rapid staccato rifle fire fills the air from the nearby ranges, where I can see the bold numbers 1-12 facing inland, indicating the target for each firing position. Before me stretches shingle, divided up by dark wooden breakwater posts, prohibiting access today as the red flag is flying. On a previous visit, just before Christmas, the area was open and I walked along the shore path, past the two Martello towers, on the scrubland between land and sea. These towers bear silent witness to a contested coastline against Napoleon, and later Germany, when the Royal Observer Corps sighted the first V1 flying bomb in 1944; the presence of the patrolling Border Force vessel brings the story up to date. Now, over this liminal area a

kestrel is hovering expectantly. However, its prey must have disappeared as it flew off without making its characteristic earthward swoop.

Walking over the shingle I search for debris the sea has left behind: feathers, some with their barbs and others with only the stalk-like rachis remaining; the



remnants of cuttlefish and crabs' claws; shells; small tangles of net; dry and brittle black-brown seaweed with air bladders and finger shaped more delicate coral coloured seaweed; fine fish skeletons; driftwood, worn away showing the layering of the growth rings; shadows of stones onto the sand; piles of nets, their fine nylon



tangled up with thicker rope; tonne bags, full of nets and rope, ranging from turquoise to marine blue.

A fishing boat, the FE1 Mizpah II, has been hauled up the beach, its colourful balloon shaped floats gathered into a bunch as if a birthday is being celebrated. Further along, another fishing boat, small but solid, Frances B, Hythe, rests on the beach, rust smudging down its sides, with colourful flags and bundles of rope stored on hooks. A catamaran, the last in the line up, its twin hulls forming a tunnel, is the most modern of the three boats. Each of these fishing boats has a long piece of rope leading from the bow and running right down the pebbles and into the sea. Behind these three lie upturned wooden rowing boats and a muddle of equipment in front of black wooden huts of differing sizes. Looking back out to sea, I notice that the fishing boat I had seen moored to a buoy has completely disappeared and I regret that I had not noticed its departure. I wonder how it could have sailed so far away in such a relatively short time.

Outside the Lazy Shack, formerly the Hythe Lifeboat Station, the beach tables are empty, not surprising on such a cold day, but on Summer days, these become full. Inside, the décor is beach themed, with dozens of witty and famous sayings and quotes, making for amusing reading. Here I leave the beach and walking only a short way inland, the wind eases and I hope my hands will soon return to warmth and comfort.



# Diary of Forthcoming Events

This page is printed to give readers and organisers the opportunity of planning events without clashing with existing ones, which are already in the 'diary'. It is not intended as a means of advertising and we take no responsibility for errors or omissions. Acceptance is at the discretion of the editor. Please send your updates by email to pbarnes20@icloud.com.plus.com or via methods outlined on Page 4.

Location and name codes below:

## One-Off Events

Date	Time	Event	Where	Tel. No.	Date	Time	Event	Where	Tel. No.
08-Mar	7pm	Pentland Homes Consultation 2	EVH		20-May		"Pick Up a Plant"	TF	
18-Mar	4pm	Cantores - Vivaldi's Gloria	St John's, Folkestone	07840796383	16-Jun		Dog and Owners Fun Day	LW	
24-Mar	7.30pm	Beetle Drive	RMVH		08-Jul	8am	Boot and Summer Fayre	LW	
25-Mar	9am	Spring Garage Sale		863856	05-Aug	8am	Boot and Late Summer Fayre	LW	
25-Mar	1.30pm	Lyminge Spring Plant Show	TC	862816	09-Sep	8am	Boot and Autumn Fayre	LW	
01-Apr	10am	Spring Stream Clean	TF	862508	16-Sep	3pm	Newsletter Deliverers Tea	AUKL	863737
01-Apr	2.30pm	Rhodes Minnis Flower Show	RMVH	862616	17-Sep	9am	Autumn Garage Sale		863856
01-Apr	7pm	Spring Quiz	EVH	863076	TBC	10am	Autumn Stream Clean	TF	862508
12-Apr	7.30pm	Dr Gabor Thomas "In the Shadow of Saints.."	LPC		12-Oct	7.30pm	LA AGM	TBC	
22-Apr	10am	Etchinghill Litter Pick	Meet EVH	07544 670363	14-Oct	10am	Etchinghill Litter Pick	Meet EVH	07544 670363
22-Apr	10am	Spring Litter Pick (Lyminge)	LVH	862508	21-Oct	7pm	Autumn Quiz	EVH	07544 670363
22-Apr	2pm	"A Touch of Swing"	LPC		23-Nov	4.45pm	Switching on of Christmas Tree Lights	LL	
29-Apr	8am	Boot and Spring Fayre	LW		26-Nov	4.30pm	Christmas Tree Lighting	Meriden Park & EVH	07544 670363
13-21 May		Lyminge Festival		863856	03-Dec	6.30pm	ERA AGM	EVH	07544 670363
20/21 May		Garden Safari		863856	18-Dec		Parcel Delivery		

## Weekly Events

Day	Time	Event	Where	Tel. No.	Day	Time	Event	Where	Tel. No.
Mon	9.30am	Dementia & Me Unit	AUKL	269602	Wed	10.30am	Pilates	RMV	07944028445
Mon	10am	Open House Coffee House	EVH	863394	Wed	2pm	Bingo (Start date TBC)	EVH	
Mon	10am	Bridge Club	LBC	863177	Wed <sup>5</sup>	3pm	French Conversation	Call	862972
Mon	10.30am	Lyminge Larks (Singing)	LMC	07951572920	Wed	7pm	Tayne Centre Circuits	TC	07925982995
Mon	10.30am	Cognitive Stimulation Therapy	AUKL	269602	Wed	7.30pm	Cantores Dominicae Choir	LVH	07840796383
Mon	5.30pm	Pilates	EVH	07951608008	Thurs	10am	Lyminge Morning Art Group	EVH	01303211364
Mon	6.30pm	Ballroom/Latin/Salsa Dancing	TC	07966751991	Thurs	10.15am	Baby Rhyme Time	LL	03000413131
Mon	6.30pm	Judo Club	LVH	862946	Thurs	10.30am	Cognitive Stimulation Therapy	AUKL	269602
Mon	7pm	Pilates	EVH	07951608008	Thurs	11.45am	Streetz to Streetz (fish and chips)	AUKL	07955926835
Mon	7.30pm	Yoga	RMV	07977503897	Thurs	2pm	Lyminge Afternoon Art Group	TC	07870494644
Tues	9.30am	Dementia & Me Unit	AUKL	269602	Thurs	3.30pm	Pilates	EVH	07944028445
Tues	10am	Lyminge Baby & Toddler Group	TC	07870405567	Thurs	6pm	Pilates	TC	07951608008
Tues	10am	Painting and Drawing	AUKL	269602	Thurs	6.15pm	Pilates	EVH	
Tues	10.30am	Poetry Group	LL	03000413131	Thurs	6.45pm	Pilates	TC	07951608008
Tues	10.30am	Cognitive Stimulation (Cogs)	AUKL	269602	Thurs	7pm	Short Mat Bowls	LVH	863842
Tues	11.45am	Pilates	EVH	07834839801	Thurs	7.30pm	Pilates	EVH	07951698008
Tues	1pm	Seated Yoga	AUKL	269602	Thurs	7.30pm	Ballroom and Latin Dancing	EVH	07967979610
Tues	2pm	Pickleball	EVH	863819	Fri	8am	Chiropody (appointment only)	AUKL	269602
Tues	5pm	Pilates	EVH	07944028445	Fri	9.30am	Dementia & Me Unit	AUKL	269602
Tues	6.45pm	Short Mat Bowls	LVH	863842	Fri	9.30am	Pilates with Katherine	AUKL	269602
Wed	9am	Morning munchies (breakfast)	AUKL	269602	Fri	10.15am	Talk Time	LL	03000413131
Wed	9.30am	Dementia & Me Unit	AUKL	269602	Fri	10.30am	Maintenance Cognitive	AUKL	269602
Wed	9.30am	Age UK Info & Advice – drop in	AUKL	269602	Fri	10.45am	Movement to Music	AUKL	269602
Wed	10am	Pilates	TC	07825109670	Fri	7pm	Table Tennis	EVH	
Wed	10am	Painting and drawing	AUKL	269602	Soon		Reading Group	LL	03000413131
Wed	10.15am	Baby/Toddler Group	EVH	07811682045					

## Monthly Events

When	Time	Event	Where	Tel. No.	When	Time	Event	Where	Tel. No.
1st Mon	2pm	RBL, Elham Valley Branch	St Mary's	862508	Last Wed	7.30pm	Quiz Night	C&H	01303901011
3rd Mon	7pm	Etchinghill Cinema Club	EVH	07544670363	3rd Thurs	7.30pm	LA Committee Meeting	TC	07840796383
Last Mon		Parish Council Meeting	SNL	07715221705	Last Thurs	1.30pm	Dementia Café	AUKL	269602
1st Tues <sup>3</sup>	7.30pm	LHS Talk/Event	TC	863879	4th Fri	7.30pm	Beetle Drive	RVH	862616
2nd Tues	2pm	Library Reading Group	LL	862972	Last Fri	1.30pm	Team Quiz	AUKL	269602
3rd Tues <sup>2</sup>	7.30pm	Gardeners' Society	TC	07703149008	2nd Sat	10am	Postling Ch. Coffee Morning	PC	863536
Last Tues	10.30am	Lyminge Poetry Group	LL	03000413131	2nd Sat	10am	Ethelburga Quilters	EVH	
1st Wed	10.30am	Lyminge Friends	LMC	862598	4th Sun	10am	Farmers' Market	LVH	
2nd Wed	11am	Singing For All	AUKL	269602	Last Sun	10am	Springrise Canine Care Pet First Aid	EVH	07582407637
4th Wed	2.30pm	RM Circle	RVH	862913					

<sup>1</sup>In term time only <sup>2</sup>Except Jan and Feb <sup>3</sup>Except Jan, Feb, and trip in Aug <sup>4</sup>Except Aug and Dec <sup>5</sup>Not held in August

**AUKL**: Age UK Lyminge; **C&H**: Coach & Horses; **EVH**: Etchinghill Village Hall; **ELVH**: Elham Village Hall; **ERA**: Etchinghill Residents' Association; **ES**: Elham Square; **EVLT**: Elham Valley Line Trust; **JF**: Jubilee Field; **KH**: Korf House; **LB**: Laing Bennett; **LBC**: Bowls Club; **LL**: Library; **LMC**: Lyminge Methodist Church; **LPC**: Lyminge Parish Church; **LPS**: Lyminge Primary School; **LVH**: Lyminge Village Hall; **LW**: Lord Whisky; **NP**: Nailbourne Court; **PC**: Postling Church; **PH**: Lord Whisky, Park House; **PVH**: Postling Village Hall; **RVH**: Rhodes Minnis Village Hall; **RMC**: Rhodes Minnis Church; **RMCS**: Rhodes Minnis Cat Sanctuary; **RR**: Rigden Room; **SMVH**: Stelling Minnis Village Hall; **SNL**: See Newsletter for info; **SP**: Sibton Park; **SPCC**: Sibton Park Cricket Club; **TC**: Tayne Centre; **TF**: Tayne Field; **WF**: Well Field



## St Mary and St Ethelburga Parish Church, Lyminge

### Sunday 5th March

Lyminge 10am WOW  
Paddlesworth 6pm Evensong, BCP

### Sunday 12th March

Lyminge 8am Holy Communion – BCP  
6pm Sung Evensong

### Sunday 19th March **Mothering Sunday**

Lyminge 10am Holy Communion CW1  
Paddlesworth 6pm Evensong

### Sunday 26th March **Passiontide**

Paddlesworth 8am Holy Communion BCP  
Lyminge 10am Family Praise Service

### Sunday 2nd April **Palm Sunday**

Lyminge 10am Palm Sunday Eucharist with  
Passion Narrative  
Paddlesworth 6pm Evensong, BCP

## Lyminge Methodist Church

A warm welcome awaits you at the following services to be held at **11am**, followed by a time of refreshment and fellowship.

**5th March** Mrs, Val Redding

**12th March 10.15am** Valley Service at **Elham**

**19th March** Rev. Gill Songer (including Holy Communion)

**26th March** Local arrangement

**2nd April** Mr. Colin Pearson

## Rhodes Minnis Chapel

A warm welcome is extended to anyone who wishes to join us for the following services at 9.30am in our small and beautiful Chapel and to share fellowship after the services over coffee and biscuits.

**5th March** Mr. Ralph Bradshaw

**12th March** No Service at Rhodes Minnis but a Valley Service at Elham at **10.15am**

**19th March** Rev. Gill Songer

**26th March** Service led by the local congregation

**2nd April** Mr. Colin Pearson

To contact the churches, please phone:

Rev Deb Scoble, Curate. The Rectory, Lyminge.

Tel: 01303 862747 [www.elhamvalleygroupofchurches.co.uk](http://www.elhamvalleygroupofchurches.co.uk)  
[www.achurchnearyou.com](http://www.achurchnearyou.com)



## Postling Church Services

**5th March** 9.30am Holy Communion

**12th March** No service

**19th March** Mothering Sunday. 9.30am Informal service  
in the churchyard

**26th March** 8.30am Breakfast Service.

## Christians in Lyminge

For the beauty of the earth,  
For the beauty of the skies,  
for the love which from our birth  
Over and around us lies,  
Lord of all, to thee we raise  
this our sacrifice of praise.

## Lyminge Newsletter

**Terms & Conditions: Copy deadline for next edition - 18 March 2023**

Please email your copy to the editor ([pbarnes20@icloud.com](mailto:pbarnes20@icloud.com)). Your payment must be received before your article or advert can appear in the Newsletter. Invoices will be issued and should be paid ASAP either by BACs, cheque, credit card or cash (details on invoice). **Business adverts** cost from £9.50 per month or £95.00 per year. **Personal and charity adverts and articles** from £3 per month, or £30.00 per year. The annual rate offers 12 entries for the price of 10. Please make cheques payable to **'The Lyminge Association'**. If you do not have email, a typed paper-copy may be left with the payment at the Library. Newsletter printed by Canterbury Print & Mail.

***Lyminge Association accepts no liability for the accuracy of the advertisements or subsequent actions arising in conjunction with advertisers in the newsletter.***

**Further details from Peter Barnes (editor) on 01303 863737 or [pbarnes20@icloud.com](mailto:pbarnes20@icloud.com)**

## Vetting of Newsletter Advertisers



The Lyminge Association is hugely grateful to all our advertisers, many of whom are local trades people. This mutually supportive relationship benefits us all with the Association investing excess funds back into community projects.

However, **the Lyminge Association cannot vet, nor does it endorse any of our advertisers.**

Potential customers should therefore show due diligence when seeking the support of any of the traders. Personal recommendation is always a prudent way of buying services or by seeking comments from the traders' previous customers for their recommendations.

# SPRING GARAGE SALE 25TH MARCH DETAILS ON PAGE 7

### *District Councillors' Update - March 2023*

We both attended the meeting of Lyminge Parish Council on 30 January to give our reports and listen to the matters raised at the Parish Council. We were pleased to share the news of the District Council's successful bid to the Government's Levelling Up Fund for £19.8m to turn Bouverie Square into a park, make major changes to the road layout and improve access for pedestrians from there to the centre of town. The project ties in with the plans for Folca (the former Debenhams building now owned by the District Council) to be used for more public services, retail and business. You can see more details in the Folkestone Place Plan which was consulted on last year and can be seen on the council website. It's been heartening to see the improvements to Folkestone over the last few years (the Lower Coastal Park, the Harbour Arm, the Creative Quarter and more) as the facilities in the town support our whole district.

Folkestone  
& Hythe



District Council

On 24 January our MP, Damian Collins secured a parliamentary debate on the future of nuclear energy at Dungeness and specifically the suitability of the present power station sites for Small Modular Reactors. A letter supporting this was also issued by both Folkestone & Hythe District Council and Kent County Council. We will be doing all we can to secure new nuclear at Dungeness for the benefits this will bring to the local economy, energy security and the environment.

We're pleased to report that Veolia, the company that collects your kerbside waste on behalf of the District Council, has reduced its carbon emissions by 5% over the last two years. This has been achieved mostly by reducing fuel consumption and installing electric bin lifts on the waste collection vehicles. LED lights and more efficient heating at the depot have also contributed to the drop.

By the time this newsletter appears the District Council will have set its budget for 2023/24. Like everyone the council has felt the effects of inflation and it must by law set a budget that is balanced and which is judged to be sound by an independent Finance Officer. Charges for services that are discretionary will need to rise to cover costs and we expect council tax to rise. There is help available for those who are struggling financially and there are many schemes for council tax relief including a discretionary fund for those that don't meet other criteria. There are also a range of other schemes to help with the cost of living and you can find out more on the council website [www.folkestone-hythe.gov.uk](http://www.folkestone-hythe.gov.uk) or ring Customer Services on 01303 853000.

**Susan Carey** ([susan.carey@folkestone-hythe.gov.uk](mailto:susan.carey@folkestone-hythe.gov.uk) 01303 670561) & **Cllr Jenny Hollingsbee** ([Jenny.hollingsbee@folkestone-hythe.gov.uk](mailto:Jenny.hollingsbee@folkestone-hythe.gov.uk) 07887918458) - your district councillors for North Downs West, Folkestone and Hythe District Council

## Anne Pulford

To all those who attended our mother's funeral

On behalf of all the family, we would like to thank you. We were really touched by the love and support her friends have shown us all. To all of those who could not attend, thank you for the friendship you have given our mother over the years.

I would also like to thank the choir and Peter Ashman for their part in the service as well as Hester Ethell and Catherine Drury for their speeches. Our Mum would have been so happy and amazed at how much people thought of her.

My love to Mum and all her friends.

**Alistair Pulford and family**



## PARISH CHURCH FLOWER FESTIVAL

St Mary and St Ethelburga Church are having a Flower Festival in May as part of the Lyminge Festival. The flower team are looking for mannequins or dressmakers dummies to be used in our displays; we need six.

If anybody has one or more that we can borrow, please contact me, Andre Hamer on 07368 588390.

## MOUNT PLEASANT CLOSE CHRISTMAS LIGHTS

Once again we would like to thank everyone for their generous donations for the Christmas lights. In total we raised **£3340** which means each of the following charities will receive £668.

The charities benefiting are: **Cancer Research, British Heart Foundation, MS Society, Lyminge Age UK and Mind.** Once again a big thank you.

## Dominoes

Simple games or perhaps 'Fives and Threes' to suit abilities of the players on the day

**Tuesday 14 March at 10am**

**Venue Lyminge Bowls Club**

open to the community  
and Club members

£2.00 includes tea/coffee



contact : Mike 01303 862073

## THE TOWER THEATRE FOLKESTONE

**THE COUNTERFEIT SIXTIES** Saturday 25 March 7.30pm

The Counterfeit Sixties presents a showcase of the great bands of this unforgettable time. The fantastic music of The Beatles, The Rolling Stones, The Who, The Dave Clark Five, The Kinks and The Monkees - to name but a few - all recreated in this stunning show.



Tickets £21 | Concessions £19 (over 65s and under 18s)

BOX OFFICE 01303 223925 or towertheatrefolkestone.co.uk

FHODS YOUTH SECTION PRESENTS ALAN PARKER'S BUGSY MALONE  
Play by Alan Parker Words and Music by Paul Williams  
By arrangement with Faber Music Ltd on behalf of Warner/Chappell Music Ltd

## Bugsy Malone

Come along and enjoy this musical masterpiece!

Tickets Adults £10 | Under 18s £7 Doors from 6pm

**Thursday 20 – Friday 21 April 7pm**

The Tower Theatre, North Road, Shorncliffe, Folkestone CT20 3HL

Registered Charity 1180504

Editor: pbarnes20@icloud.com

## Beetle Drive Rhodes Minnis Village Hall

It is with regret that we have decided to discontinue this fun family game due to a lack of players. We need approximately 16 players to make this worthwhile and raise money for the village hall funds. Currently, we have just 6/7 regular players.

However, if you would like to try this game and have just not got around to it yet, please ring Dorothy on 01303 862616 or Elaine on 01303 863096 for any further information.



## Lyminge Judo Club

(British Judo Club Registered)

We are a small friendly village club. We welcome and encourage both novices and skilled players and train every Monday evening at Lyminge Village Hall from 6.30pm. Open to all ages from 6 upwards - no upper age limit.

Juniors £2.50 per week; Seniors £3.50 per week. First session free, with no obligation.

**Contact:** Selwyn Nichols 01303 862946 or selwyn\_nichols@hotmail.com

# Lyminge Coronation Garden Safari 2023



**Open days Saturday 20th & Sunday 21st May**

With our garden open days four weeks earlier this year, we will need to consider what plants will be at their best in late May - spring flowering shrubs and bulbs should be in full bloom and hopefully no extended dry or wet spells to spoil our efforts.

The Lyminge Allotments will be open to the public on both days, with someone there to welcome visitors and show them around.

A big thank you to the seven gardeners who have offered to open their gardens this year. We still need a few more entrants, so please give me a call to secure your place.

If you require any further assistance, please contact me  
**Ray Smith 01303 863856**

## Lyminge Garage Sale

(formerly Garage Safari)

**Saturday 25th March 2023**

Entry/Registration Forms are available:

Monday 6th March 2023 at **Snippers & Clippers Ladies Hairdressing Salon and The Coffee Cabin**

or on-line at [www.lyminge.org.uk/newsletter/current/mobile/index.html](http://www.lyminge.org.uk/newsletter/current/mobile/index.html)

Completed forms, along with payment (£5 per garage, driveway or village hall table), to be returned by Saturday 18th March

Contact Ray on 863856 for further information



## Doctors' NewsNotes

Our two GP surgeries are sponsoring an initiative to improve communications to our residents about key topics within healthcare. This initiative, to be routinely included within our Lyminge Newsletter, aims to provide accurate information for the community that may previously only have been picked up when patients visit the surgeries.

### ***Are you a Carer? Do you know someone that is a Carer?***

Caring will affect us all at some point in our lives and it's important that as a carer you look after your own health and well-being. Something that people say is easier said than done, in particular during stressful and emotional times. However, finding just a few minutes of time for yourself, could help in ensuring that you are supported to continue providing the support you do.

Carers are all ages and every Carer's situation is unique but there are lots of common themes and things that many people experience because of their caring role. Being a carer can be very difficult and often isolating. It is important to remember that you are not alone and it's OK to have whatever kind of feeling you are experiencing.

For you to continue providing the care you do, we would promote you to contact Carers' Support East Kent who are a charity that provides Carers with information and support they need. Services are available to people looking after a relative or friend, who due to physical or mental illness, age related difficulties, disability or an addition, cannot manage without their support.

There is also a monthly newsletter that you can sign up to that has a lot of useful information.

Carers' Support East Kent

T: 0300 302 0061 M: 07545 916214 E: [support@carersek.org.uk](mailto:support@carersek.org.uk)

Please also contact your Surgery to register yourself as a Carer. You will then be eligible for free flu vaccines and other services when national campaigns are run.



# HEAVER & LINCH

Bespoke Handmade Kitchens & Furniture

Bespoke Handmade Cabinet Makers based in Lyminge, covering Kent and the South East. Over 30 years experience in creating stunning solid wood kitchens and furniture.

Get in touch for any advice, recommendations and a free quote.

Tel: 07832 360 603 or 07832 363 963

Email: [heaverlinch@outlook.com](mailto:heaverlinch@outlook.com)

Website: [www.heaverandlinch.co.uk](http://www.heaverandlinch.co.uk)



# Jazz The George Inn

Stone Street  
CT4 6DF

Every Tuesday 8.30pm and  
Thursday 8.15pm

Come early and enjoy home cooked English food, local ales and fine wines.

Open for food from 12 noon and  
6pm, Tuesday to Saturday

Sunday Roast from 12 noon

Best to book to avoid disappointment

Phone Michael: 01227 709170

or E-mail:

[landlord@thegeorgeonstonestreet.co.uk](mailto:landlord@thegeorgeonstonestreet.co.uk)

[www.thegeorgeonstonestreet.co.uk](http://www.thegeorgeonstonestreet.co.uk)

Find us on Facebook:

The George Inn on Stone Street

**GARAGE SALE - SATURDAY 25TH MARCH : SEE P7 FOR DETAILS**

## Kent's Leading Mobility Specialists

Over 200 new & used scooters available 

**USED SCOOTERS FROM £395**

**BEDS FROM £1395**

**CHAIRS FROM £595**

Huge range of Shoes & slippers for problem feet

**HOME DEMONSTRATION LET US COME TO YOU**

**STAIRLIFTS**








**FOLKESTONE STORE**

**Tel: 01303 274574**

**[www.safehandsmobility.co.uk](http://www.safehandsmobility.co.uk)**

**[folkestone@shmobility.co.uk](mailto:folkestone@shmobility.co.uk)**

Compass House, 347-349

Cheriton Road, CT19 4BP

**ALSO AT  
BIRCHINGTON**





Hythe Aqua Swimming Club has vacancies for potential competitive swimmers Level 7 and above. Join a Club with a nationally accredited swim programme. Lessons/Coaching sessions are held on Tuesday & Thursday evenings at Hythe Pool.

We also welcome adult length swimmers to our Adult training on Tuesdays & Thursdays at 9.00pm

To book your place

Email: [hytheaqua@btinternet.com](mailto:hytheaqua@btinternet.com) or checkout our website: [www.hytheaqua.org.uk](http://www.hytheaqua.org.uk) or [F/book](#)



**Rhodes Minnis  
Spring Flower Show**  
Rhodes Minnis Village Hall  
**Saturday 1st April 2:30 pm**

All entries to be submitted on the day between 9am and 10:30am. Entry fee: 25p for each class.

Show Secretary: Dorothy Athow  
(01303) 862616



**Cantores**  
PROUDLY PRESENT

**Vivaldi Gloria  
Concert**

St John's Church  
Church Rd, Folkestone CT19 5BQ

**SATURDAY 18 MARCH 2023 at 4.00PM**

Programme to include a selection of  
**Sacred Music of the 18<sup>th</sup> & 19<sup>th</sup> Centuries**

Musical Director ~ Dr Jon Williams  
Organist ~ Jamie Rogers  
Soprano ~ Millie Heyward  
Mezzo Soprano / Contralto ~ Emma Christianson

ADMISSION £10 ON THE DOOR  
Refreshments included

**LYMINGE FESTIVAL**  
**13<sup>TH</sup>-21<sup>ST</sup> MAY**  
**DETAILS NEXT MONTH**

**Lyminge Friends - March 2023**

In February, we had Melanie Gibson-Barton, who gave a very good talk on **Elizabeth Barton, The Maid of Kent 1506 – 1534**. This young visionary from Aldington in Kent was so dangerous to Henry VIII that he had her executed.

On **Wednesday 1st March**, Wendy Fraser will talk on **Secrets beneath Siena, Italy**.

A medieval subterranean engineering feat to bring water into the fast-developing settlement of Siena in the 1200s. This Talk will be followed by a trip over the Brockhill Country Park Café for a walk in the sunshine (we hope) and lunch.

On **Wednesday 5th April**, Andrew Ashton will speak on **Goldenhurst**. The History of an Ancient Kent Farmhouse and its countless celebrity connections, from Noel Coward to Julian Clary. After this talk, we will pop over to Folkstone Garden Centre for some Spring shopping and lunch.

On **Easter Monday, 10th April**, we will meet at **Etchinghill Golf Club** at 12.30pm for Lunch. This must be prebooked and prepaid in full with Marian (862015).

We meet at 10.30am in the Methodist Church, Church Road, Lyminge CT18 8JA. Entry for 2023 is £4.00

We are a friendly social group and welcome new members so just drop into a meeting, or if you'd like to talk to one of us first, please call 863500. Please wear appropriate clothing and bring a blanket with you if you feel the cold.





# Singing for All



## EVERYONE WELCOME

### £3 per person

Lower stress, boost immunity and lung function, enhance memory and improve mental health.

Age UK Lyminge, Station Road  
11am- 12pm

Wednesday 11th January

Wednesday 8th February

Wednesday 8th March

Wednesday 12th April

Wednesday 10th May

Wednesday 14th June

Wednesday 22nd November



For more detail call 01303 269602



Made with PosterMyWall.com

Reduce utility costs - spend time in our Meet up, Warm up hub

# MeetUp WarmUp



- A warm & welcoming environment
- Energy saving tips/Information
- Free phone charging points
- Free WiFi
- Free Flask (Limited availability)
- Fill up your own flask with hot water (save boiling your kettle)
- Free energy efficiency light bulbs

- Free hot water bottle (Limited availability)
- Tea and coffee available to purchase
- Light snacks available to purchase (including hot soup and bread & butter £1.00)
- Two course hot lunch £7.50



- Tea time snack pack to take home £3.50 (Sandwich, crisps and cake)
- Opportunity to join in many chargeable activities, meet others and stay warm



Age UK Hythe and Lyminge – Sanford House, Stade Street, Hythe, Kent, CT21 6BD  
Open Monday – Friday 9.30am – 3.30pm  
Saturday 10.30am – 1.30pm  
Sunday 10.30am – 1.30pm

Age UK Lyminge – Station Road, Lyminge, Kent, CT18 8HQ  
Open Monday – Friday 9.30am – 3pm  
Age UK Ashford – Stanhope Road, Ashford, Kent, CT21 6BD  
Open Monday – Friday 9.30am – 3.00pm

Registered charity number 1152574. Company number 6589817. © Age UK Hythe and Lyminge 2022

Registered charity number 1152595. Company number 8248833. © Age UK Ashford 2022

Call 01303 269602 for more information

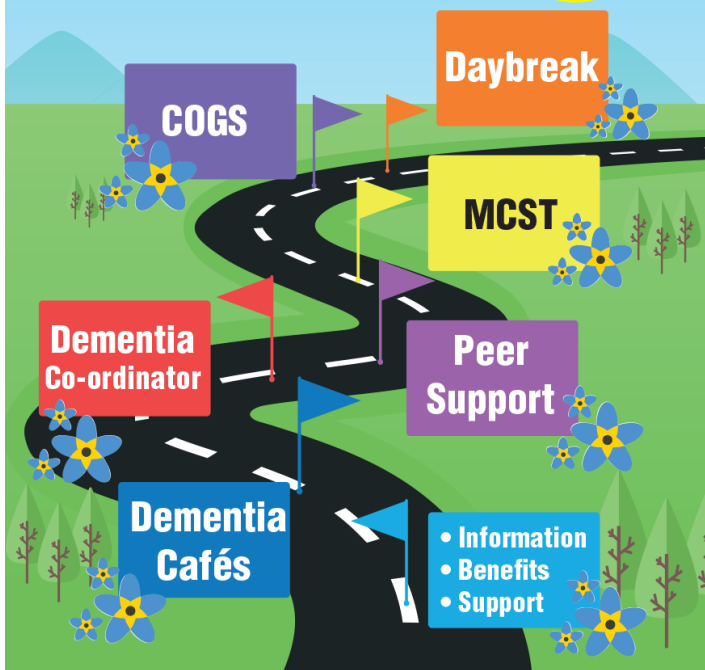
## AGE UK - LYMINGE

Are you concerned about your memory?

Are you living with Dementia?

We can help guide you along your journey

Dementia & Me



## Services and activities available.

**Information and Advice** is available to those by telephone, centre-based visits and home visits. We have a team of expert Information and Advice Officers who can help to maximise income by completing benefit checks to ensure individuals are receiving all they are entitled to. Our team are there to support individuals complete forms, using the right terminology for a more positive outcome. This service is free and available by appointment or drop into one of our many Dementia Cafés.

The **Dementia Co-ordination** team will work with and support those affected by dementia, including family and carers. The Dementia Co-ordinators will be there to help from pre-diagnosis, to support people to get a diagnosis, to access support services and provide the guidance they need to live as independently as possible within their communities. Free and available by appointment.

**Dementia Cafés** offer a safe place to socialise, meet others, ask questions and learn more about dementia and local services, whilst enjoying a hot drink and a slice of cake. Free, groups held at various locations throughout the month.

**MCST** (Maintenance cognitive stimulation therapy) is a 12 week programme that meet weekly for 1 hour 30 minutes for people living with mild dementia. Group members take part in meaningful and stimulating activities, proven to help maintain memory and mental functioning. The group provide a fun, supportive environment where people can build new friendships. £60 Mondays or Thursdays (moving to Friday from January) 10.30am -12noon.

**COGS** (Cognitive Stimulation Therapy) is a weekly 4 hour programme for people living with moderate dementia. COGS is a small group intervention for people who are experiencing difficulties with their memory. It works by providing ideas for people to help themselves maintain their cognitive abilities, including group discussions and activities. A 12 week programme, £20.00 per week on Tuesdays 10.30am – 2.30pm, (Thursday starting in January).

**Daybreak** services offer activity-based day care in a safe and secure environment for people living with moderate to late-stage dementia who need a little more support or have additional needs. As well as providing a meaningful day for participants, it can provide a day of respite for family or carers. Monday – Friday 9.30am – 3pm £35.35.

Services delivered at our bespoke unit at **Age UK Lyminge**, Station Road, Lyminge, CT18 8HQ. Transport is available on request.

For more information or to speak to one of the team call: **01303 269602**, [dementiadaybreak@ageukhl.org.uk](mailto:dementiadaybreak@ageukhl.org.uk)  
call: Carlene Ryan, Dementia Organiser  
**07379 646426**, [demo@ageukhl.org.uk](mailto:demo@ageukhl.org.uk)

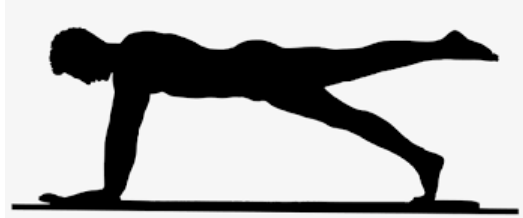


Registered charity number 1152574. Company number 6589817. © Age UK Hythe and Lyminge 2022

## New PILATES class!

Thursdays 17:00

Rhodes Minnis Village Hall



Spaces are limited. Please book in advance.

The class is suitable for any level of ability from complete beginner to intermediate.

For more information:  
lucianaclarke.pilates@gmail.com  
07944028445  
www.lucianaclarkepilates.com

## ETCHINGHILL RESIDENTS' ASSOCIATION Film Night

'NEVER TOO LATE'<sup>12</sup>

Monday 20th March 2023

Etchinghill Village Hall - 7 for 7.30pm

Entrance Fee £6pp

Open to new and existing members  
Free Refreshments and Raffle



[www.etchinghill.info](http://www.etchinghill.info)

## Rhodes Minnis Circle

On the 22nd March we look forward to a talk on the Canterbury Dog Trust. The competition is an item beginning with the letter "A".

In April we are having a presentation on *Skyways at Lympne Airport*.

Visitors will be made very welcome (£2.50p including refreshments)

Marion 862913

## BUSTER PLAYS BUSTER

Saturday 11th March 6.30 for 7pm

Elham Village Hall

**Buster Plays Buster**, led by drummer Buster Birch is a jazz quartet who play live jazz to a classic Buster Keaton silent movie. Their music is specifically arranged, scored out and sync'd to the movie, but also features plenty of improvised solos from these great jazz musicians, which all creates a cohesive work merging the two art forms into a unique experience for the audience.

Those lucky enough to have secured a ticket will also be served a three-course meal\*. Our Platinum Bar will be open with some fine wines and beverages to accompany the meal.

**Tickets are £20 (including food) for this unique event and are available from Miranda: [Miranda1232@hotmail.com](mailto:Miranda1232@hotmail.com).** Prompt booking is recommended.

Booking details: BACs to Elham Village Hall Ltd: 09-01-52 13698706 - please contact Miranda in the first instance.

**\*Menu is gluten free and comprises:**

Dips, crudites and tortilla chips. Chicken breast and mushrooms with a tarragon sauce served on rice and peas, or oven-roasted butternut squash, carrots and mushrooms with a sage sauce served on rice and peas (vegan). Individual pavlovas with red berry compote, or vegan chocolate coconut mousse and red berry compote.

Please ensure we are aware of any special dietary requirement when booking.



## LYMINGE HISTORICAL SOCIETY



Come and Join Us!!

Our next talk is on Tuesday 7th March, 7.30pm in the Tayne Centre

**'Lyminge in the Swing Riots, 1830'**  
with Derek Boughton

2023 Subscriptions due. Great value at £11.00  
Cash or Card accepted.

**!!Lyminge a History Part 12 now available!!**

This can be purchased at the Library, Lyminge Food and Wine or direct from Daphne on the number below. You can also purchase it at the monthly Lyminge Historical Society talks.

All Lyminge a history publications, can be purchased individually through the Lyminge Village Store, Lyminge Library or on-line via our website using PayPal.

Plus: purchase Parts 1-5 as a bundle for £22 or Parts 1-12 for £60. Lyminge archaeology chapters in Parts 2,4,6,7,8 for £25\*.

To take advantage of the offer please call Daphne Andrews on 01303 862865. NB These bundle offers are not available from The Library or Lyminge Food and Wine.

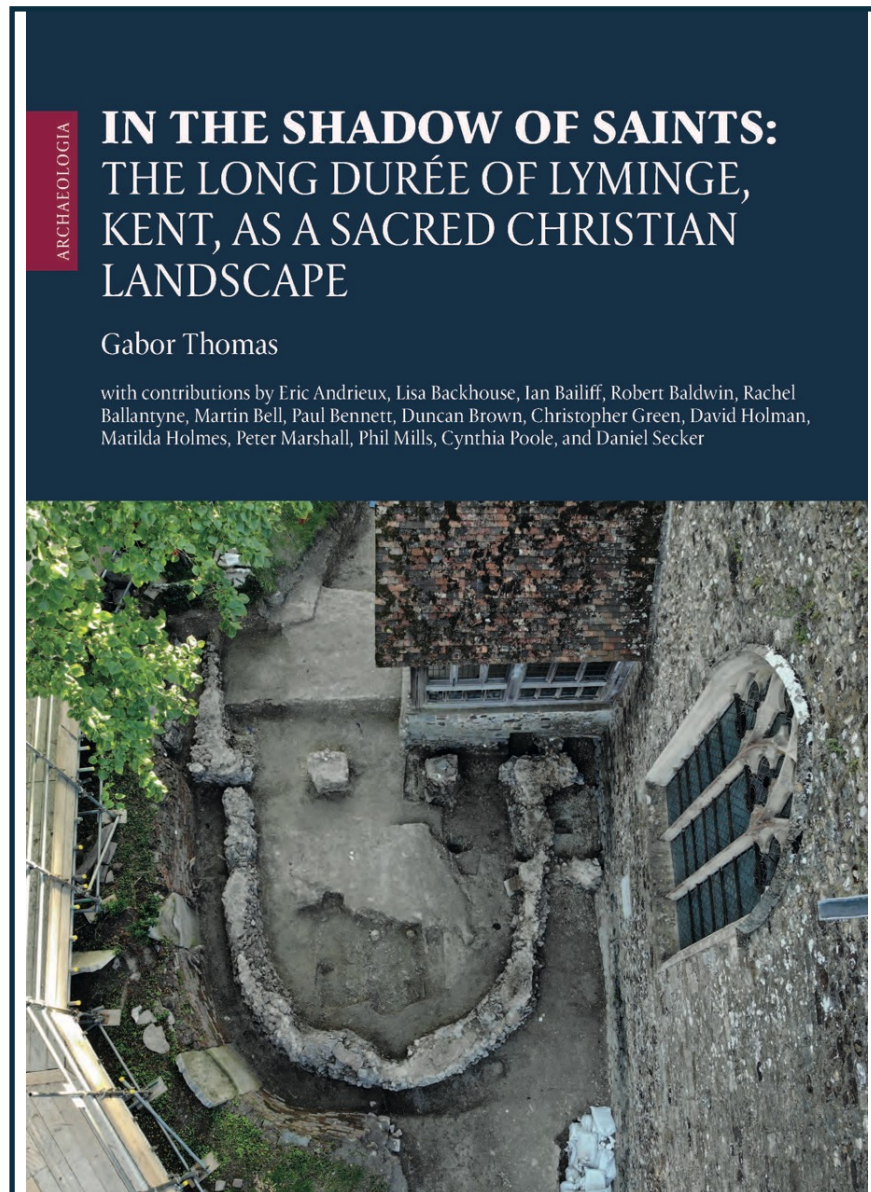
\*Postage and packaging extra.

Email: [lymingehistoricalsociety@gmail.com](mailto:lymingehistoricalsociety@gmail.com)

Website: [www.lymingehistoricalsociety.co.uk](http://www.lymingehistoricalsociety.co.uk)

Facebook: [www.facebook.com/Lymingehistoricalsociety](http://www.facebook.com/Lymingehistoricalsociety)

**To celebrate the publication of the report on the archaeological excavation in the church yard in 2019 and the re-examination of the 7th Century church that may have been built by Queen Ethelburga**



**there will be a free public talk by  
Dr Gabor Thomas**

**Associate Professor in Archaeology at the University of Reading**

discussing his findings at Lyminge and how they have contributed significantly to our understanding of the development of Anglo-Saxon England

**in Lyminge Parish Church, Church Road, Lyminge CT18 8EH  
on Wednesday 12 April 2023 at 7.30pm**

*The excavation report is published by the Society of Antiquaries in London and is available for free download at: <https://www.sal.org.uk/journals/in-the-shadow-of-saints-the-long-duree-of-lyminge-kent-as-a-sacred-christian-landscape/>*

# The Lyminge Gardeners' Society



**PRESENTATION BY  
MELISSA THOMPSON**

**"Simply Soil"**

**Tuesday 21<sup>st</sup> March  
at The Tayne Centre,  
Lyminge**

**7:00pm onwards for  
Refreshments**

**Presentation starts  
7:30pm**

## **SPRING SHOW and PLANT SALES**

**Saturday 25<sup>th</sup> March  
at The Tayne Centre, Lyminge**

**Doors open and Refreshments from  
1:30pm**

**Prizegiving 4:00pm  
(Staging 8:30am until 10:30am)**

**Show Schedules will be available in The  
Library and will be emailed to members.**



**Further details from Sara Packer on  
01303 862816  
or email: [lymingegardeners@gmail.com](mailto:lymingegardeners@gmail.com)**

## **FUTURE 2023 EVENTS**

Tuesday 18 <sup>th</sup> April – 7:30pm at The Tayne Centre	Workshop 'Creating with Clay' with Annie Begley
Tuesday 16 <sup>th</sup> May	Festival Week – LGS event to be confirmed
Tuesday 20 <sup>th</sup> June – 2:30pm at Tram Hatch, Charing TN27 0BN	Tram Hatch Garden Visit, Guided Tour and Tea
Tuesday 18 <sup>th</sup> July – 2:30pm at Downs Court, Boughton Aluph TN25 4EU	Downs Court Garden Visit and Tea
Saturday 22 <sup>nd</sup> July– 2:00pm until 4:00pm at The Tayne Centre	Summer Show
Tuesday 19 <sup>th</sup> September – 7:30pm at The Tayne Centre	Gardeners Question Time with Steve and Derek from Farthing Common Plant Centre
Tuesday 17 <sup>th</sup> October – 7:30pm at The Tayne Centre	Talk 'Madagascar – Enchanted Isle' by Clive Nuttman
Tuesday 21 <sup>st</sup> November – 7:30pm at The Tayne Centre	Talk 'A visit to the Butchart Gardens, British Columbia' by Anne Gould
December – Time and Venue to be confirmed	Christmas Meal (Members Only)

**For more information contact Anne on 07703 149008 or email:  
[lymingegardeners@gmail.com](mailto:lymingegardeners@gmail.com)**

## Etchinghill Update - March 2023

### ETCHINGHILL RESIDENTS' ASSOCIATION (ERA)

**Chairman:** David McCombe 07939 076617. Email: dmccombe1@gmail.com Website: www.etchinghill.info Facebook: Etchinghill Residents

### FILM NIGHT - ETCHINGHILL VILLAGE HALL – MONDAY 20th MARCH 7.30pm -

**"NEVER TOO LATE" (12).** Comedy / Drama / Romance, starring James Cromwell, Dennis Waterman, Jackie Weaver and Jack Thompson. It has been a long time since Caine, Bronson, Angus and Wendell, aka, 'The Chain Breakers', escaped a torturous Vietnamese POW camp. They now find themselves sharing a new prison, 'The Hogan Hills Retirement Home for Returned Veterans'. Each of the boys has an unrealised dream they want to achieve before it's too late. So, once again, they band together to devise a plan to escape this new hell. However, the rules of engagement have changed but they can't even remember what they were and that's half their problem. Doors open at 7pm for a 7.30pm start. Entry is only £6pp and includes refreshments and a free raffle. Prior booking is not required and new members are very welcome; please register and pay at the door.

**APRIL FOOLS' DAY FUN QUIZ - ETCHINGHILL VILLAGE HALL - SATURDAY 1st APRIL 7pm - DOORS OPEN 6.45pm.** This quiz is being held to help raise funds for the Residents' Association. To avoid disappointment please book your places early. The entry fee is only £4pp and tables of up to 6 participants can be reserved with Geraldine, 07544 670363 or by email: gpmccombe49@gmail.com

Please remember to bring your own refreshments. Raffle prize donations would be gratefully accepted - thank you.

**CORONATION OF KING CHARLES III - BANK HOLIDAY MONDAY 8TH MAY.** A joint event to celebrate the occasion is currently being planned with the village hall trustees. Please watch this space, our website and notice boards for more information over the coming months.

**News contact: Jacqui Blandford - 07543 966830 or email: jacqui.blandford@gmail.com**



### Fifth Trust Update

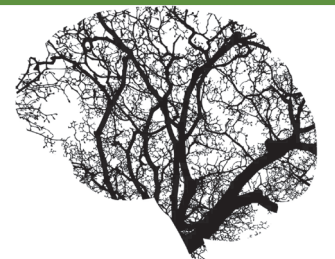
[www.fifthtrust.co.uk](http://www.fifthtrust.co.uk)

**Fifth Trust Connect** is live! You can now enjoy many of the activities we offer at our skills centres online wherever you are, whenever you want. Our experience in transferring sessions online during the pandemic lockdowns – and the positive feedback we received – made us realise there was an appetite for video content specially created for a learning disabled audience. **Fifth Trust Connect** gives our students access to familiar sessions like stories and singalongs presented by familiar faces whenever they want – in the evening, at weekends, or if they cannot come to us in person.

With special features including spoken text, prominent scrolling arrows and 'how to' videos, the platform encourages and supports independent use, although learning disabled users may need assistance to register, sign in and make purchases. To join in, users can pay a monthly subscription to watch the monthly video selection as many times as they want or simply pay per video per view. Find out more here: [ftconnect.org](http://ftconnect.org)

### MINDCRAFT EDUCATION

### MENTAL HEALTH COACHING FOR TEENAGERS



As an experienced special needs teacher with a qualification in counselling, I now offer single sessions and a number of courses directed at improving the mental health of teenagers. This can involve focusing on specific areas of concern or more general mental health issues, designed to create happier and more resilient young people.

For more information please contact me on 07458 949222 or go to [www.mindcrafteeducation.co.uk](http://www.mindcrafteeducation.co.uk)

## Coach & Horses



### CHECK OPENING HOURS

For bookings and any help needed, please phone

01303 901011 or check

Facebook page

'Coach & Horses'





# LYMINGE PARISH COUNCIL

## March 2023 Newsletter

*Forthcoming Council and Committee Agendas are displayed on the Council notice boards on Tayne Field and the entrance to the Village Hall car park, Etchinghill. Agendas and minutes are published on the Council's website: [www.lymingeparishcouncil.org.uk](http://www.lymingeparishcouncil.org.uk) and Facebook page. We invite you to read the minutes online or on the noticeboards which may provide the information you are seeking regarding a particular item, but correspondence is always welcome from parishioners and can be sent to the Clerk at the addresses given at the bottom of this page.*

### **PENTLAND DEVELOPMENT ON ETCHINGHILL GOLF COURSE**

Following a very strong turn out by local residents at the recent public Consultation meeting with Pentland, The Parish Council are facilitating a follow up meeting to give a further opportunity for residents to hear the proposals in more detail, and where feedback from the previous meeting will be addressed by Pentland, along with a chance to ask questions.

This is planned for 7pm on **Wednesday the 8<sup>th</sup> March** at Etchinghill Village Hall. See P19 for further details.

### **QUEEN'S GREEN CANOPY TREES**

Following the wishes of His Majesty The King, The Queen's Green Canopy (QGC) initiative will be extended to the end of March 2023 to give people the opportunity to plant trees in memoriam to honour Her Majesty. As a nationwide initiative created to mark the Platinum Jubilee, the QGC was due to conclude in December – the end of the Jubilee year. However, the initiative will now be extended to include the full tree planting season, concluding in March 2023.

Trees were planted in the three

villages of the Parish in March last year as part of the QGC initiative, supported by the Parish Council and several local community groups, on Tayne Field in Lyminge (rowan trees), the Recreation Ground in Rhodes Minnis (fruit and nut trees), and St Mary's Field in Etchinghill (flowering cherry trees, plus two nut trees). Thanks again to everyone who helped these trees to survive their first year despite the summer drought of 2022.

Additional small bare-root whips are currently being planted by Lyminge Scouts in various locations around the Parish, including around the edges of Tayne Field (particularly filling in the gaps in the hedge by the new play park), Jubilee Field, and Court Lodge Green. These additional trees will also be included in the national Queen's Green Canopy initiative summary statistics. Thanks to Lyminge Scouts and anyone else helping out with this additional planting effort.

It's nearly but not quite too late to plant a QGC tree yourself, if you haven't already! For more details see <https://queensgreencanopy.org/>

### **ENERGY EFFICIENCY**

With the continuing high prices on energy, food, and other essentials,

many of us are looking at ways to save money and also to reduce our impact on the planet.

There is a lot of great information available on how to make your home more efficient, including on

Government websites:

<https://www.gov.uk/improve-energy-efficiency> and

<https://helpforhouseholds.campaign.gov.uk/energy-saving-advice>

It is worth looking out for grants which are offered from time to time on energy efficient projects, such as installing solar panels or insulation.

**Insulation:** Making sure your home is well insulated is one of the best things you can do, and with energy prices still high, the payback through savings on your energy bills is faster than ever before. Improving the EPC rating of your house is also becoming more important when selling properties, as many people are now factoring in home efficiency to their wish list for a new home.

**Efficient appliances:** There are five main appliances that consume a lot of the household energy, so are worth thinking about upgrading. Boilers and refrigerators come in highest, as they are on for the most amount of time, followed by dishwashers, ovens and washing machines although this will

vary by household usage. Switching from a G rated boiler to an A rated one could save over £580 per year (Jack Woodfield, *HomeBuilding & Renovating Magazine*, Feb '23).

Many of us have already turned our thermostats down a degree or two, but turning down the temperature on your boiler to 60 degrees can also save energy, but is hardly noticeable to most.

### **KENT PLAN BEE**

Kent County Council launched in 2021 the “Kent Plan Bee”, a “pollinator action plan” acknowledging that pollinators such as bees, wasps, butterflies, moths and hoverflies are vital to our food, economy and environment which aims to improve the habitat and the food sources of these insects and to reverse their rapid decline.

It is also hoped that the plan will help mobilise the people of Kent to do their bit for pollinators. Look up Kent Plan Bee online or on social media for ideas of what each of us can do to help.

### **JOIN US!**

The public are always welcome to come to meetings.

### **MARCH MEETING DATES**

Finance and Administration Committee – Monday 13th Mar 2023 at 7.00pm, Tayne Centre, Lyminge  
Full Council Meeting – Wednesday 29th Mar 2023 at 7.30pm, Etchinghill Village Hall

### **Sarah Harrison, Clerk**

Correspondence Address: Lyminge Parish Council, 18 The Sidings, Lyminge CT18 8HH  
Telephone: 07999 403 948 (9am till 1.30pm Mon to Thursday only)

Email: [clerk@lymingeparishcouncil.org.uk](mailto:clerk@lymingeparishcouncil.org.uk) [www.lymingeparishcouncil.org.uk](http://www.lymingeparishcouncil.org.uk) [www.facebook.com](http://www.facebook.com)

### **KCC Community Warden**

Gary Harrison can be contacted on 07977 982185 or [gary.harrison@kent.gov.uk](mailto:gary.harrison@kent.gov.uk)





## Thoughtful Food....

...is a group of local volunteers looking at our food, and how this impacts climate change. Our aims are to support people to produce more of their own food, and to shop locally, sourcing seasonal produce. We also run a community allotment in Lyminge and welcome new members.

**Contact:** thoughtfulfoodgroup@gmail.com or on Facebook and Instagram @thoughtfulfoodgroup

Next **Thoughtful Food** meeting, **Tuesday 7th March, 7.15pm**, at the Coach and Horses Public House

## Pruning Workshops



Phil Wilson is an arboricultural consultant with an infectious passion for trees. This is physically demonstrated in his garden in Lyminge with over 100 varieties of apple many of which he has self-propagated, experimenting with grafting trees with a desired habit onto a different root stock.

Phil kindly offered 2 workshops in which he shared his knowledge and demonstrated pruning skills.

One of the first bits of advice Phil gave was that whilst gardening books were a useful tool or point of reference, very often they do not reflect a true picture of most people's gardens or trees. Faced with an idealised graphic image of a tree with red marks showing where it should be pruned, most gardeners, especially novice ones will feel overwhelmed and discouraged. His sound advice was, don't be! Phil's approach is much more intuitive, informed by his years of experience and practice rather than the text-book gold standard.

Building up a relationship and knowledge of your trees will be the best way to learn how to prune effectively to make your trees fruitful but also save on labour year on year.

Ask yourself, what do I want this tree to do, what shape would you like to achieve? Would you prefer to encourage a leader trunk with 2 or 3 tiers of branches or do you want a more lateral forming crown. This may entirely depend on the trees growing situation and why you planted it. Did you just want to grow a tree for its blossom and fruit, it's wonderful winter structure or did you also want to use it as an architectural form, maybe screening an unattractive view, creating privacy or enclosing a space.

Notice how your trees grow - which are the leaf buds and which are the fruit buds? The fruit buds will not form on 1 year growth but on growth 2 years and older. Can you see where the girdle scar has formed between this year's and last year's growth? Do you want this year's growth to be upward facing or down as this will influence the direction of the cut just above a bud. All of these things will become clearer the more you look and observe.

Thank you Phil, I now have much more confidence to tackle my own small orchard without that knot of terror in my stomach; I, have made a start and it's OK!

## Things to Grow in March...

Sow outside broad beans, garlic if not already, lettuce, spinach, peas, onion, salad onion, early brassicas, parsley, coriander, dill, parsnips, first early potato late March. Sow outside same as undercover, also main-crop potatoes in early May, carrots, parsnips but keep seedbed moist until germinated.

Our thanks as ever to Charles Dowding for his brilliant website

<https://charlesdowding.co.uk/march-update-new-seedlings-and-sowings-new-land-no-dig-bed-prep-cool-spring/>

## Trying to get the kids to eat more veg and healthy snacks? - how about Parsnip Crisps

600g parsnips, 2 tbsp olive oil, 1/2 tsp of both ground cumin and coriander. Generous pinch smoked paprika.

Preheat oven to gas 4, 180°C, fan oven 160°C. Very thinly slice parsnips. Pat dry on a tea cloth. Toss in a bowl with the oil and spices. Arrange evenly onto 2 baking trays. Bake for around 25 minutes until edges golden. Carefully transfer onto some kitchen roll. Eat warm or cold.



**Very Best Wishes from Thoughtful Food**



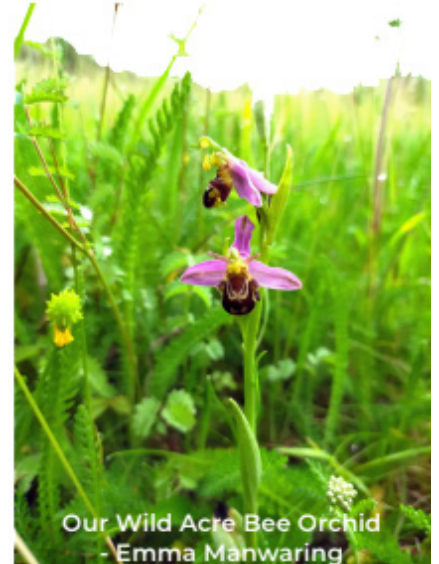
# Our Wild Acre 2023 Bigger Than Ever



Our Wild Acre Spotted Orchid  
- Emma Manwaring



Our Wild Acre Garden  
- Kate Bennett



Our Wild Acre Bee Orchid  
- Emma Manwaring

In 2021, we launched Our Wild Acre project. The aim of this challenge is to create a new acre of wildlife-friendly habitats across the Parish. **WE NEED YOU to make it bigger than ever!**

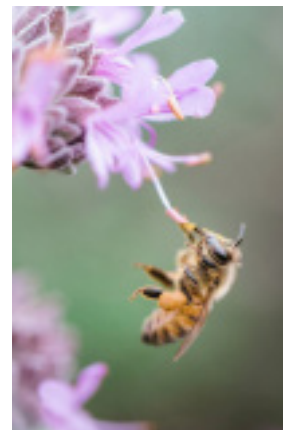
We are asking you to leave a **small area** of your garden uncut and untouched through the growing season (March to August). This would provide a fantastic **refuge for wildlife** for us all to enjoy.

Areas left in this style of management would develop a greater diversity of plants that in turn would support the butterflies and all manner of different insects and animals. Therefore the little pocket of land set aside for nature will go a long way to reversing the alarming decline in plants and animals that they are currently facing. With a 70% decrease in insects over the last 50 years, we need to work together to reverse this worrying trend.



If you can commit a patch of your garden or land, or a window box or anything else, to be a wild area from March until at least August, please let us know by **registering online** <https://forms.gle/1vegnWHLKwFZ4wCE9> or scan the QR code. This is also available through the Lyminge Climate Action Facebook Page or by emailing [lymingebiodiversity@gmail.com](mailto:lymingebiodiversity@gmail.com) or telephone 01303864347.

## Join Now Our Wild Acre



## Let Your Dandelions Bee!



Dandelions are one of the most important early season flowers for wild bees and other pollinators; it is possible to spot over ten different species of wild bees on your garden dandelions in the Lyminge parish.

Let them flower this spring and enjoy the spectacle whilst helping our native wildlife.



# Concept Masterplan



**Two of plans produced for Pentland Homes.**

**Next Consultation Meeting**  
**7pm**  
**8th March**  
**Etchinghill Village Hall**



Illustrative Masterplan

[www.pentlandhomes-lyminge.com](http://www.pentlandhomes-lyminge.com)

## Some of the benefits of the new scheme over the old are:

- Additional CIL (Community Infrastructure Levy) & S.106 (Legal Planning Agreement) contributions of £356,957. Giving a new total payment of £887,409.
- This comprises increased contributions to the local PCT/NHS (Primary Care Trust/National Health Service) practices (3Nr) within Lyminge, additional monies for Public Rights of Way improvements, enhanced medium CIL charges, of which the Parish will directly receive circa £44k all by virtue of the additional 19 dwellings.
- 68% of the property now fall within the SDLT (Stamp Duty Land Tax) relief band for first time buyers (was 43%)
- Average private dwelling selling price reduced to £562k (was £686k)
- Private price range now £330k-£845k (was £375k-£1.3million)
- Increase in affordable housing to 10 dwellings with a mix of 1, 2 and 3 bed units. (Previously 6 dwellings - 1 and 2 beds)
- Increase in private sale 2 & 3 bed accommodation to 49% of the scheme (previously 36%)
- All house types will comply with the Nationally Described Space Standards (NDSS).
- All affordable types will comply with Building Regulation M4(2), which is a higher standard of design to enable future adaption for a person of impaired ability or disabled occupation
- All new homes will comply with Building Regulations Part L1(a) to produce 31% less CO2 emissions than what is currently acceptable under the present Part L Regulations
- All properties will have underfloor heating as standard specification, reducing energy usage and the cost of space heating to our future customers



AN E.R.A. FUN QUIZ

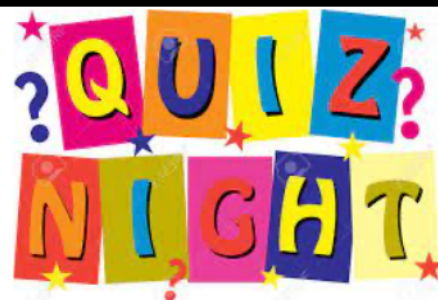
SATURDAY 1<sup>st</sup> APRIL

ETCHINGHILL

VILLAGE HALL

7 pm start

Doors open 6.45 pm



ENTRY IS ONLY £4 pp

Please join us for our April Fool's Day, Fun Quiz, featuring a mix of general knowledge, themed and music rounds

Teams of up to 6 persons only, please. To reserve a table, contact Geraldine by email: [gpmccombe49@gmail.com](mailto:gpmccombe49@gmail.com) or call her on 07544 670363

Please bring your own refreshments. Entry fees are payable on the night

Raffle prize donations will be gratefully received - thank you ☺

*The quiz will be hosted by the Etchinghill Residents' Association (ERA) and monies raised will be used for the benefit of the local community or various charities, as appropriate*

### SUNFLOWER COMPETITION 2023

*Lyminge Gardeners' Society is running a Sunflower Competition for anyone in the village!  
It's time to sign up!*



The rules are:

- Grow a sunflower in either your garden or in a pot in your garden, stop the slugs eating it and whoever grows the tallest one wins a certificate
- All we ask is that the plant is grown within the village
- We can supply the seedlings which are free, or you can grow your own
- Seedlings will be available at the *Pick Up A Plant* event on 20th May or at some of the Open Gardens that same weekend
- Just let us know you are going to take part and if you require any seedlings by emailing [lymingegardeners@gmail.com](mailto:lymingegardeners@gmail.com) or verbally when you pick up your seedling if you prefer
- You will need to let us know your name, address and contact details
- On the last Sunday of the school summer holiday, if you have let us know you're in the contest we will come and measure your sunflower.

*May the best plant win!*

# SPRING GARAGE SALE

## 25TH MARCH

## DETAILS ON PAGE 7

# Rural Cost of Living Household Survey



citizens  
advice

Rural Issues Group

## HELP NEEDED IN TARGETING HARD TO REACH RESIDENTS

Ideally, we would like to target hard to reach rural residents, i.e. those without access to the internet or the capacity to engage with services online.

We are hoping you could feature the attached poster prominently in your community to help your local residents complete the survey. Places such as town and village bulletin boards, town and village halls, community shops and local food banks would be great areas to feature this poster.

We have also ensured the survey can be completed multiple times on the same device, so if colleagues are in the community with a digital device, they could help rural residents complete the survey.

As much as we would like to supply paper surveys and input them ourselves resources don't allow that's why we would really appreciate your help.

## HOW WILL THE RESULTS BE USED?

Results from the survey will build on the Rural Cost of Living research we commissioned last year and help us to lobby Government Departments, MPs and other policy makers for a fairer deal for rural communities.

**The survey will run until 31 March 2023.**

## Rural Households Survey on the Cost of Living



### Do you live in a rural area and are you feeling the pinch?

The Rural Services Network and the Rural Issues Group of Citizens Advice are jointly running a survey to understand more about rural household budgets at, what is, a very difficult time for many.

Research commissioned by the RSN last year shows rural areas are suffering more acutely from the rise in the cost of living. Results from the survey will help us to engage more effectively with Government Departments, MPs and other policy makers.

[https://www.surveymonkey.co.uk/r/Rural\\_Households\\_Cost-of-Living](https://www.surveymonkey.co.uk/r/Rural_Households_Cost-of-Living)



<<<  
Scan the QR code to  
access the survey  
and tell us your views

The survey closes on 31 March 2023

In aid of LORD WHISKY SANCTUARY FUND (Charity No 283483)

Park House Animal Sanctuary Stelling Minnis CT4 6AN  
Tel: 01303 862622 [www.lordwhisky.co.uk](http://www.lordwhisky.co.uk)  
[lord.whisky@btinternet.com](mailto:lord.whisky@btinternet.com)



We welcome you to our Park House fundraising events this year.

Boot & Spring Fayre ~ Saturday 29th April  
Dog & Owners Fun Day ~ Saturday 10th June  
Boot & Summer Fayre ~ Saturday 8th July  
Boot & Late Summer Fayre ~ Saturday 5th August  
Boot & Autumn Fayre ~ Saturday 9th September  
Boot Fair from 8am. Entertainment as advertised.

We are holding a meeting at the Lord Whisky Tea Room at 4pm on Saturday 25th March. Anyone who is interested in helping or has new ideas is invited to attend. Please ring 01303 862622 if you are interested in attending

*"Positive anything is better than negative nothing."*

**Elbert Hubbard, Writer**

Editor: [pbarnes20@icloud.com](mailto:pbarnes20@icloud.com)

## AFTERNOON TEA

listening to the sounds of  
*A Touch of Swing*



**SATURDAY 22ND APRIL**  
**2PM ST MARY AND ETHELBURGA CHURCH,**  
**LYMINGE**

Refreshments, Homemade Cakes and Scones  
Tombola - Table Sale - and plenty of music  
*Raising Funds for our Flower Festival in May*

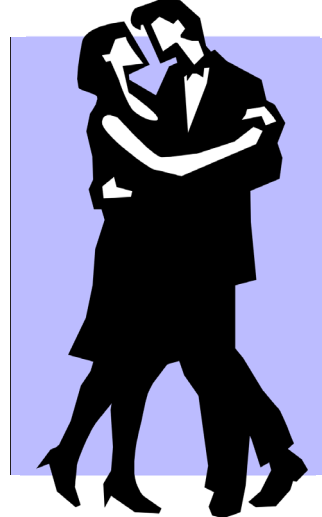
**Freshly Prepared  
Breakfasts & Light Lunches  
Home Baked Cakes  
Vintage Afternoon Teas  
Coffees  
Teas  
Takeaway Available  
Private Functions**

Open Tuesday to Saturday  
9am to 3pm  
Dog Friendly

THE COFFEE CABIN TEA ROOM LTD.  
CANTERBURY ROAD, LYMINGE, KENT.  
CT18 8HU. 01303 864222  
Instagram @thecoffeecabintearoomltd  
Find us on Google Maps

## BALLROOM & LATIN DANCING

Cha Cha Cha ~Waltz ~ Jive ~ Quickstep ~ Rumba ~  
Foxtrot and more



## Etchinghill Village Hall

New Beginner Classes

**Commencing  
16 March 2023**

Thursdays 7.30 -  
8.30pm

Improver Class

Thursdays 8.30 -  
9.30pm

£6 per person per hour

Bring your two left feet and your sense of humour  
Get FIT, get HEALTHY & get DANCING

Partners not necessary

To join any of the classes, or for further details, or  
information about private lessons

contact **Lynn** on **07967979610**

**lynn.chapman0127@btinternet.com**

IDTA (AB), (AL), (SalDip)

POP ME ON THE FRIDGE

**MOBILE  
FISH &  
CHIPS**



**EVERY  
THURSDAY**

**From  
11.45am - 12.45pm**

**Age UK Car Park  
Eat In Cafe  
or Take Away**

**age UK**

**STREETZ 2 STREETZ**

TELEPHONE:

**07955 926 835**

Major Cards Accepted



Don't be led up  
the garden path...

...choose an agent  
that gives straight  
forward, honest advice.



Call today for a free, no obligation valuation

Bridge Office - 01227 831999  
bridge@colebrooksturrock.com  
88 High Street, Bridge, CT4 5LB

Elham Office - 01303 840422  
elham@colebrooksturrock.com  
Bank Buildings, Elham, CT4 6TD

colebrooksturrock.com





## Lyminge Baby & Toddler Group

We are excited to welcome you to our local parent, baby and toddler group.

Please come along, meet new mums and dads for a chat and a play.

It costs £3.50 with tea and coffee provided along with snacks for your child.

Tuesdays, term times only. 10am to 12noon at the Tayne Centre.

First session is free.

Follow us on Facebook and Instagram.

Contact Ellen at 07870405567.

## Letter to the Editor

Dear Editor,

The committee members and the users of the recently installed play area of Tayne Field were appalled and disgusted to see that some of the equipment had been irresponsibly tagged with graffiti.

Thankfully, Sian (Harriet's mum) came forward and took it upon herself to clean and scrub off as much as possible. If that wasn't enough, she then went on and cleaned the graffiti off the school signs as well.

So, Sian...



The Users and LYA Committee



## BADGERS BRIDGE NURSERY

*" Bridging the indoor and outdoor learning environment for children in their Early Years"*

Badgers Bridge is set in the idyllic countryside of Postling, just outside Lyminge. We are a small and friendly Preschool who blend the Montessori principles with the outdoor learning ethos.

We were awarded Outstanding by Ofsted in 2018 in every area. This is a real achievement and we are really proud of the staff who work tirelessly to provide a stimulating and caring environment for the children of Badgers Bridge.

The inspector was particularly impressed with our Forest School. *"Children enjoy limitless opportunities to explore, investigate and work together in the natural woodland environment. Staff skilfully inspire children to develop a significant understanding of the world in which they live".*

*".....exemplary relationships between staff provide excellent role models for children and promote high standards of behaviour. Children make outstanding progress during their time at the nursery".*

**Exciting news! We have opened our new setting in Elham. We offer the same unique outdoor experiences for children from 20 months old. Come along and see us at The Gore!"** So please call or email us:

Email : [badgersbridge@gmail.co.uk](mailto:badgersbridge@gmail.co.uk)

Website : [www.badgersbridge.co.uk](http://www.badgersbridge.co.uk)

Tel : 01303 862951

**Postling Village Hall, The Street, Postling CT21 4EU**

Ofsted Registered : 395128

Companies House Reg : OC375571



Based at  
Lyminge Village Hall

**LYMINGE**  
Pre-school

Every Day Adventures  
at our **OUTSTANDING** pre-school

**COUNTRYSIDE SETTING  
QUALIFIED &  
LONGSTANDING TEAM  
WRAP AROUND CARE  
8-6PM DAILY**

**PARENT PORTAL  
HOLIDAY CLUB  
OUTSIDE OF TERM TIME  
FANTASTIC FACILITIES  
& GARDENS**

Early Years Education & Day Care for Children  
Aged 2-5. Rated **OUTSTANDING** by OFSTED 2022.

WE'D LOVE TO HEAR FROM YOU

01303 863149 ✉ [LYMINGEPRESCHOOL@GMAIL.COM](mailto:LYMINGEPRESCHOOL@GMAIL.COM)

Editor: [pbarnes20@icloud.com](mailto:pbarnes20@icloud.com)

**Etchinghill** Baby & Toddler  
**GROUP**

10.15-11.30am every Wednesday  
at Etchinghill Village Hall  
£2.50 per child

Come along to Etchinghill's Parent and Toddler group welcoming children from 0-3. We have plenty of toys and snacks for the little ones, and there is always tea coffee and cakes for the adults. For further information call Chrissy on 07811682045 or Ruth on 07817777975, look at Parent and Child Etchinghill Facebook page or email us as [parentandchildetchinghill@gmail.com](mailto:parentandchildetchinghill@gmail.com).





**With our excellent local knowledge & experienced staff we will get you moving**

✓ **Free** professional photography, property floorplan, Rightmove premium listing & social media advertising

**01303 863393**

The Estate Office,  
8 Station Road,  
Lyminge,  
Kent CT18 8HP

Follow us on  
social media



[www.laingbennett.co.uk](http://www.laingbennett.co.uk)

## The Lyminge Association

*We're here to support and develop our community!!*

### Contacts:

**Chair:** Nancy Benham 01303 863076 or 07840796383  
nancybenham@aol.com

**Vice Chair:** Peter Barnes 01303 863737 or 07808775302  
pbarnes20@icloud.com

**Treasurer:** Martin Fry 01303 863177  
martin@Rhodesminnis.org.uk

**Committee Members:** Adrian Willcox, Marian Chubb, Richard Chubb, Dave Hunt-Cooke, Gillian Heywood, Robin Macknochie, Derek Smith, Ray Smith, Penny Stephens

**Newsletter:** As for Peter Barnes above

## ETCHINGHILL VILLAGE HALL HIRE FEES

The next time you are thinking of holding a function why not try Etchinghill Village Hall, which holds the highest Hallmark accreditation level (Hallmark 3), with its excellent facilities, including ample parking space.

The standard hire charge for the main hall and kitchen are:

ANY DAY OF THE WEEK' ANY TIME £12 PER HOUR

No winter supplements. No extra charges.

Ideal for family parties and get togethers.

The use of a separate Committee Room is also available.

For all bookings or enquiries please contact:

**The Duty Manager on 07514 758936**



**Large hall with stage, new kitchen and flexible hire**

Excellent parking facilities, disabled access, proximity to playgrounds and playing fields. Beautiful countryside location.

### Capacity:

200 people dancing / audience seating, 100 with tables  
Small rooms available for up to 50 seated

Find out how we can help you with your next event:

**BOOK ONLINE:** [lymingevillagehall.org.uk](http://lymingevillagehall.org.uk)

**EMAIL:** [admin@lymingevillagehall.org.uk](mailto:admin@lymingevillagehall.org.uk)

**INFO:** 07525 909185

Full pricing can be found on our website.

### Guideline prices:

Main Hall hire: £88.40 (Fri / Sat evenings)

£47.60 (Sat / Sun morning or afternoon)

Find us on Facebook

Registered charity 28145

## Rhodes Minnis Village Hall

Charity No.800345

Rhodes Minnis Village Hall is located 2kms (1¼miles) from Lyminge and just off Longage Hill and Whitehorse Lane in Chapel Lane.

The hall, which holds Hallmark accreditation, is ideal for children's parties, band practice, quizzes, meetings, wedding receptions, fundraising events and much more. It has a fully equipped kitchen.

### Rates

Mon to Fri £18 per session £48 all day

Sat & Sun £23 per session

£33 for evening session and £69 all day

### Sessions

AM session 08.30 - 12.30

PM session 13.30 - 17.30

Evening session 18.00 - 23.45

Separate rates for Bank Holidays and New Year and special rates for regular users.

For all bookings and enquiries please contact:

**Mick & Dorothy Athow: 01303 862616**

**e-mail: [booking-rmvh@outlook.com](mailto:booking-rmvh@outlook.com)**

## TAYNE CENTRE

### HALL HIRE

*Previously known as the Lyminge Methodist Church Hall*

**Clayson Hall:** £15 per hour

**Rigden Room:** £10 per hour

**Wesley Room:** £10 per hour

**Church:** £20 per hour

### Enquiries:

**Tel: 07716 521 405**

**Email: [maryeblanch@outlook.com](mailto:maryeblanch@outlook.com)**



## Lyminge Library Opening Times

Monday 10am - 2pm

Tuesday 12noon - 5pm

Wednesday 10am - 2pm

Thursday 10am - 5pm

Friday 10am - 2pm

Saturday 9am - 1pm

**Tel: 03000413131 [lymingelibrary@kent.gov.uk](mailto:lymingelibrary@kent.gov.uk)**



anxiety  
ILLNESS money  
LONELY WORRIERS CORONAVIRUS  
isolation  
TRAPPED UNCERTAINTY  
ABUSE Quarantine CONCERN  
BEREAVEMENT

It's natural to feel anxious during times of uncertainty, but help is available

Call 0800 107 0160  
Text the word Kent to 85258  
or visit [releasethethepressure.uk](http://releasethethepressure.uk)

Support is free, confidential and available 24hrs a day.  
It is provided by Independent Care and funded by Kent County Council, Medway Council and NHS partners.

**DAVID HAIME**  
ARCHITECTURAL TECHNOLOGIST  
BUILDING TECHNICAL DESIGN  
AND CONSTRUCTION DRAWING  
SERVICES.  
PROJECT MANAGEMENT

BUILDING PLANS FROM PORCH TO NEW BUILD.  
PLANNING/BUILDING CONTROL/STRUCTURAL CALCS.  
COVERING KENT/SUSSEX/SURREY.

LYMINGE, KENT CT18 8HA  
TEL: +44 7974 156510  
EMAIL: [D.HAIME@BTINTERNET.COM](mailto:D.HAIME@BTINTERNET.COM)

## Bus times

for buses from Lyminge The Sidings to Folkestone town centre via Etchinghill & Cheriton High Street

**MONDAYS TO SATURDAYS except Bank Holidays**

There are route 17 buses at 0705 (not Saturdays), 0749, 0909, 0934 (not Saturdays), 1004, 1034, 1104, 1204, 1304, 1404, 1514, 1614, 1619 (schooldays only), 1654 (schooldays only), 1719, 1749, 1834, and 1929.

There are also route 18 buses to Sandling Station & Hythe - for times see our website or call the number below.

**SUNDAYS & BANK HOLIDAYS**

There are route 17 buses at 1032, 1302, 1532 and 1802.

for buses from Lyminge Wesley Terrace to Canterbury city centre via Elham, Barham & Bridge

**MONDAYS TO SATURDAYS except Bank Holidays**

There are route 17 buses at 0727 (schooldays only), 0732, 0752, 0903, 0938, 1028, 1128, 1235 (1228 on Saturdays), 1335, 1443, 1608 (1613 on Saturdays), 1703, and 1803.

There are also route 18 buses to Canterbury via Stelling Minnis and Bossingham - for times see our website or call the number below.

**SUNDAYS & BANK HOLIDAYS**

There are route 17 buses at 0903, 1133, 1403, and 1633.

These bus times will operate from 12 February 2023.

0345 241 8000 @StagecoachSE  
customerhelpSE@stagecoachbus.com  
stagecoachbus.com

**Kingdom**  
CARPET CO.

- Carpets Supplied & Fitted
- Carpets Professionally Cleaned
- Carpets Whip Edged & Cotton Bound

Whatever your carpet need, give us a call for a **FREE** estimate / assessment.

Over 50 years combined experience.

**07943 764 442**  
Email: [kingdom.carpet.co@gmail.com](mailto:kingdom.carpet.co@gmail.com)

**GEORGE MILLER**  
BOILER & HEATING ENGINEERS

- Gas & Oil Boilers
- Central Heating
- Hot Water Systems

01303 901070  
service@georgemiller.co.uk  
248 Cheriton Road, Folkestone, CT19 4DN

georgemiller.co.uk

**SNIPPERS & CLIPPERS**  
UNISEX HAIR SALON

APPOINTMENT NOT ALWAYS NEEDED  
WEDDINGS & SPECIAL OCCASIONS  
SHELLAC NAILS  
GENTS WELCOME  
FREE WIFI

4 Station Road, Lyminge  
Folkestone  
Kent, CT18 8HP  
01303 647 222  
[info@snippersandclippers.co.uk](mailto:info@snippersandclippers.co.uk)

Find us on Google+ | Find us on facebook

**Anna Lindley**  
(RVN, Dip.A.Physio)

Anna's Animal Physiotherapy  
For dogs, cats & small pets

- Offering physiotherapy assessment and treatment of dogs, cats and small animals.
- I use a combination of manual therapy, laser, ultrasound therapy, TENS, kinesiology tape and exercises to rehabilitate your/their pet depending on the needs. I also address environmental and exercise factors that can help your pet with their condition.
- I now have a **NEW** treatment room where I can offer further assessment of your pet using a stance analyser. This identifies the mildest of lameness and addresses areas of compensation. I also offer home visits. Physiotherapy can help with arthritis and the ageing pet, post operative orthopaedic surgery, neurological, spinal conditions and many more conditions.
- I am fully insured with over 15 yrs experience working with animals. I am a member of the International Association of Animal Therapists (IAAT).
- For more information please visit my website: [annasanimalphysio.co.uk](http://annasanimalphysio.co.uk) or feel free to contact me on 07944 606453 or [anna@annasanimalphysio.co.uk](mailto:anna@annasanimalphysio.co.uk)



## Snippers and Clippers Barbers - Lyminge

Please call Richard for availability  
(appointment necessary) on 07522 494969  
Thank you for your continued support

4 Station Road, Lyminge CT18 8HP

Follow us on facebook for offers

## Andy Mannering Flooring

SPECIALISING IN AMTICO AND  
KARNDEAN LUXURY VINYL TILES



- Also safety flooring, rubber flooring, etc.
- Commercial and domestic work undertaken
- No job too small
- Free estimates and advice given
- Over 35 years experience
- Fully insured

Telephone: 0797 434 7248 or 01303 863095

Email: info@andymanneringflooring.com

Please visit my website for further information and feedback  
[www.andymanneringflooring.com](http://www.andymanneringflooring.com)



## DILTON MINI SKIP HIRE

Ballast, Hardcore, Sand  
and Topsoil Supplied  
REGISTERED WASTE CARRIER

01303 812448 or 07799 433754

## Red Dragon I.T. Ltd.



- Windows, Mac & Linux Systems
- PC Health Checks
- Wired & Wireless Networks
- Website Design
- Graphic Design

T: 01303 723456 | E: info@rdit.co.uk | www.rdit.co.uk  
The Old Granary, Hanover Mill, Church Rd, Mersham, TN25 6NU

## Rhodes Minnis Cat Sanctuary



REHOMING & BOARDING CATTERY

- Our Sanctuary takes in and rehomes 250 unwanted cats and kittens each year. A variety of cats are always available to suitable homes.
- 5\* Boarding Cattery under 2018 regulations
- We are open to visitors every day from 10am-1pm & 2-4pm. No appointment needed.

T: 01303 862 243  
E: rhodmminiscats@gmail.com  
Facebook: @rhodmminiscats  
[www.rhodmminiscatsanctuary.com](http://www.rhodmminiscatsanctuary.com)

Seathwaite, Green Lane, Rhodes Minnis, Kent. CT4 6XU  
Reg. Charity No. 262245



'Helping you enjoy your garden'

## CRT Gardening

All general garden and major landscaping redesign work will be undertaken including: full or minor garden design, hard and soft landscaping, new fencing and decking installation and repairs as we are Jacksons Fencing approved installers, hedge trimming and cutting, small to medium tree work.

For a free quotation call or text Karl Dodd on 07967 442518  
or email karl.dodd@live.co.uk  
Fully Insured



Hawkinge

## Veterinary Surgery

Independently owned veterinary surgery for all types of small animals.  
Opening hours: Monday to Friday 08:00-19:00 Saturday 08:30-13:00  
24hour emergency service

TEL: 01303 764190

Hawkinge Veterinary Surgery, 9b Defiant Close, Hawkinge CT18 7SU  
[www.hawkingevetsurgery.co.uk](http://www.hawkingevetsurgery.co.uk)



ROBERT KENT Cert. fp  
FUNERAL DIRECTOR

Direct  
Cremation

£999

Fair Priced  
Cremation

£1950

ONE FIXED PRICE INCLUDING  
ALL CREMATION FEES

01303 684062

[RKFUNERALS.COM](http://RKFUNERALS.COM)

## SCRUBBERS - Est. 1988

THE HOME AND COMMERCIAL CLEANERS

One off, regular or moving day 'Blitz'

Oven cleaning - Ironing

Carpet cleaning and more...

For a friendly and reliable service

Free Estimates

Tel: 01303 249288 or 07834 128671

## Computer support & repairs by local people

Customer service is our priority

- \*Remote IT support for business or home
- \*New & refurbished sales
- \*Call-outs for business or domestic users
- \*Preventative maintenance & upgrades
- \*Repairs to most phones, tablets & devices

enquiries@thecomputerpeopleltd.co.uk



Church Approach,  
New Romney,  
TN28 8AS  
01797 363385



Acrise Electrical Services Limited

Design - Install - Maintain

Tel: 01303 656007 Mob: 07803 421240

Email: info@acrise-electrical.co.uk

Website: [acrise-electrical.co.uk](http://acrise-electrical.co.uk)

Domestic, commercial, industrial & agricultural  
electricians serving the Elham Valley and surroundings.

## Tressenden Designs

A seamstress and costume maker with 8 years of experience.

- ♦ Clothing alterations ♦ Repair work undertaken ♦ Made-to-measure; create a bespoke piece for those special occasions
- ♦ Modern and vintage designs ♦ Costumes, ball gowns and wedding dresses

For more information or a quote please contact Amy on: Mobile: 07853 202304 Email: amy.louise.ford@hotmail.co.uk





**APX PROJECT  
MANAGEMENT**

From design to build, we use trusted quality trade professionals along with reliable suppliers to ensure budgets are met, with high standards maintained. If you're looking to -

- Extend your property
- Carry out an external or internal refurbishment
- Convert an existing building into a new dwelling

Please contact: paul@apxprojectmanagement.co.uk 07487 364155



**Dennis Huntley  
Chimney Sweep**



Wood burners and multifuel stoves installed  
Hearths and fireplaces built & installed  
Over 40 years' experience



**01303 862 343 • 07850 784 365**

dennis.huntley@talktalk.net www.dennishuntley.co.uk

## Auto Economy Centre

**Fully equipped Mechanical Repair & Service Centre**

**With the latest diagnostic equipment**

**Half price MOTs when booked with any service**

**01303 863656**

**Orchard Garage, Canterbury Rd, Etchinghill**

**www.autoeconomycentre.com**

## AIR LINK CARS

(You pack up, we pick up)

Airport, Seaport & Long Distance Travel Specialists.

The Family Run Business where service really counts

Estate cars and People Carriers



Fixed price 24hrs a day. No extras.

Written Confirmation of booking.

For the Easy Airport Link, Think AIR LINK!

**01303 670370 - 07766 824 474**

**airlinkcars@yahoo.com**

**Gosbee  
LANDSCAPES**

FENCING | GATES | PAVING | RESIN BONDING  
• Over 35 years experience • Jacksons Approved Installer  
• Marshalls approved • Check-a-trade registered

Call Martin Gosbee: 07974 835 511 | 01303 863 337

GOSBEECONSTRUCTION@GMAIL.COM  
GOSBEE.CO.UK



## Sunhouse Electrical

Your local reliable Electrician

Part P Registered & Elecsa Approved

On Electrical Safety Register & Fully Insured

For a free quotation call James on

**01303 766333**

**www.sunhouse-electrical.com**

**KW CONSTRUCTION**  
PLASTERING & RENDERING SPECIALIST

ALL GENERAL BUILDING INCLUDING:  
ROOFING, BRICKWORK, TILING, PATIOS,  
LANDSCAPING, SCREEDING, GROUNDWORK,  
DRAINAGE, EXTENSIONS, RENOVATIONS,  
REPAIRS & MAINTENANCE.

30 YEARS EXPERIENCE, COMPETITIVE RATES,  
A FULLY INSURED, PROMPT & RELIABLE  
HIGH QUALITY LOCAL BUILDER

KENNY 07743488361

**HANDYMAN  
SERVICES**  
SJW

www.Facebook.com/sjwoodhandyman  
www.Instagram.com/sjw.handymanservices  
**07796 384857**

**LYMINGE FOOD & WINE**  
**01303 862225**



Our new opening times are:

Mon – Sat **7:00-20:00**

Sunday & Bank Holidays

**8:00 - 19:00**

PayPoint

POST  
OFFICE



We offer National Lottery, ATM terminal,  
Post Office & PayPoint services.



**AK Healthcare**

Tel: 07904311554 /  
07980897382

www.akhealthcare.org.uk

We help patients suffering from a wide variety of conditions including arthritic pain, circulatory problems, frozen shoulder, back pain, sciatica and much more.

Please visit our website or give us a call for more information.

**AK Healthcare,**

**Garden Suite,**

**4 Station Road, Lyminge**

**Park House Sanctuary Boarding Kennels & Cattery**  
**Park House, Stelling Minnis CT4 6AN**

Brick-Built Heated Kennels. Daily Walks ~ Reasonable Rates

Dogs must be fully inoculated. Heated Cat Chalets

Quiet Area Inspection Invited.

To book or for further information, call 01303 862622

or email lord.whisky@btinternet.com

www.lordwhisky.co.uk

## South East Aerial & Satellite Solutions

Digital – Freeview – Satellite – Aerials

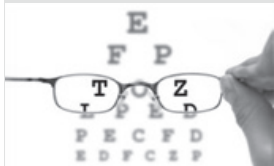
Supply and fit of quality digital installations, FREEVIEW, SKY, aerials, poor reception and problem solving, upgrades and repairs by fully accredited engineers

Free quotations and advice, fixed prices, fully insured

**Freeview**

**NO CALL-OUT CHARGE**

**07825 168010 - 01303 862361**



## HOME VISITING OPTOMETRIST - providing professional eye care in your home

If you are over 60 years of age and no longer able to get out on your own, then you are eligible for a NHS sight test in your own home. Please call to arrange an appointment:

**Elaine Edwards BSc(Hons)MCOptom 01303 840541**

Registered with the General Optical Council (01-15421) Member of the College of Optometrists Member of the Association of Optometrists

## D.M.B. Plastering

All aspects undertaken  
*Interior. Exterior. Plastering. Rendering.  
Coving. Ceilings. Wall. Floors  
Finest quality assured. CSCS Certified.*  
30 years experience.

Free estimates. Reliable service. Fully insured.  
Call **David** on **07818 607209**



Forest Lodge  
Counselling & Therapy

### Need to talk?

Confidential and compassionate  
qualified counsellor here to listen.  
Please call or text Natasha on 07593 794321  
All messages replied to  
Email: forestlodgetherapy@gmail.com  
www.forestlodgethecounselling.com



FILEHURST ASSOCIATES

## YOUR COMPLETE REMOVALS AND STORAGE SOLUTION

☎ **01303 239990**    ✉ **info@filehurst.co.uk**

Domestic & Business Removals - UK wide & France  
Business Document Storage

Call Nick for a no-obligation quote.

## B.M. Plumbing & Maintenance Services

Local Lyminge Tradesman

Plumbing and heating works. Complete bathroom  
install including tiling. General building maintenance  
undertaken. No job too big. No job too small.

Cheaper rates for senior citizens



**07890854128**    **Benmillsplumbing@hotmail.co.uk**

## KJB GARDEN SERVICES

Weeding, Pruning, Mowing, Hedge  
Cutting & General Maintenance  
**01303 862181** or **07704 989 402**  
Over 35 years experience

## JON DAUGHTERS - Local Builder

All aspects of general building works undertaken including:  
roofing, kitchens, bathrooms and small extensions

**Trading for over 30 years**

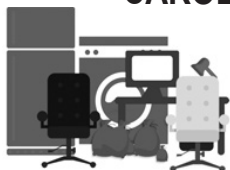
**Free quotes, no obligations, fully insured**

**Telephone: 01303 863371**

**Email: daughters777@hotmail.co.uk**

House Clearance covering South East Kent.....and beyond!

## CAROL CREES CLEARANCES



- Est. over 30 years  
Full/part house clearance  
Fair prices paid  
Antique/Vintage/Retro/Modern  
Registered rubbish carrier

Contact **Simon Cullen** on **07745 421680** or **sijnzo@aol.com**



www.eastkentfootcare.co.uk

**07745 532075**

**Podiatry, Chiropody,  
Foot Health**

Treating and managing foot  
and nail conditions, corns,  
callus, insoles, ingrown nails,  
diabetic foot care



Total garden care for all your needs

## TIM MILLETT

Grass Maintenance, General Gardening, Small & Medium  
Size Tree Work, Stump Grinding and Wood chipping  
Fencing Repairs & New Installations  
Turving, Hard & Soft Landscaping

Free Estimates - Fully Insured

**01303 863676**    **07752 880583**

Email: **info@tmhorticulture.co.uk**

## N.P.C.

**Domestic Appliance Services**

*Service and repair of washing machines, tumble driers,  
dishwashers, cleaners and small electrical work.  
For a prompt and friendly service*

Call Neil Collard 01303 892234 or 07798716044  
or Google me on Yell.com



## Your Local Electrician For all your electrical needs

- 18th Edition/Part P Registered
  - Insured & all work guaranteed
  - All electrical work carried out including EV charging points
  - Covering Lyminge, Etchingill & surrounding villages
- Call for a free, no obligation quote and to discuss your  
electrical requirements.



**07878 457018**

**01303 814372**

**info@hughes-electrical.co.uk**    **www.hughes-electrical.co.uk**

**To advertise in this space, please contact**

**Peter Barnes**

**pbarnes20@icloud.com**    **01303863737**    **07808775302**



# T.M. GRIGGS



01303 489795 07854 098395  
tobystreesurgery@gmail.com

**Garden Clearance - Turfing - Hedge Cutting  
Tree Work - Stump Grinding - Fence Repair**

## DYNO-ROD



We've been  
unblocking  
sinks, drains  
& toilets  
in Kent  
since 1965

- Quick Response
- CCTV Drain Inspections
- Drainage Repairs
- Pre-purchase Surveys

For a FREE no obligation quote  
contact Mark or Peter on:

**01233 621108  
07557 616630**

## FRESHLOOK GARDENS

Regular lawn mowing service. Garden design. Hard and soft landscaping. General garden work, fencing and decking. Turfing hedge cutting, small and medium tree work. Water features, ponds and patios.

For free quotation ring **Danny Scott**  
**01303 242140** or **07795510093**  
**mrdanscott89@gmail.com**

Established since 1990. Fully insured.

## THE HANDY FELLOW



**A TRUSTED LOCAL SERVICE  
CALL 07534485049  
ONE.HANDY.FELLOW@GMAIL.COM**

## Computer Repairs

01303 241325  
07968 129902

PCs, MACs, Laptops, Tablets & printers,  
Upgrades & Repairs, Internet & Email, virus removal,  
Office Setup, Backup & Recovery & much more ...  
Tuition available by a qualified tutor.

Usual Fee **£55**

Web sites built & hosted from £10 per month

See [www.computers-in-lyminge.co.uk](http://www.computers-in-lyminge.co.uk) for details



## Alan Croucher Caravan Engineer

**07921 480919 - 01303 863194**  
Caravans & Motorhomes "WE COME TO YOU"  
[www.arcmobilecaravanservices.com](http://www.arcmobilecaravanservices.com)

"Your manufacturer's warranty is safe in our hands"



Local Tradesman

## J Tappenden

Established over 40 years ago

Painter/Decorator

**01303 862467  
077755 78008**



## A. J. Athow

**BUILDER & DECORATOR  
GENERAL MAINTENANCE**

Telephone: 01303 862616

Mobile: 07541 792238

Email: [tony@athow.co.uk](mailto:tony@athow.co.uk)

## Jackson Plumbing Property Maintenance

Complete bathrooms and tiling  
No job too small. Special rates for OAP's.

Telephone: home/evening **01303 270691**  
or daytime **07773 089398** or **07864 929826**

## Trevor Law Electrical Installations

Serving Elham Valley for 30 years  
Part P Registered

**07850 970087**



## Ralph Allard Chimney Sweep



All chimneys, boilers and stoves swept.  
Brush and Vacuum. Certificates issued.  
HETAS and NACS registered, fully insured.  
Member of National Association of Chimney Sweeps

**01303 844465** or **07813716654**



## JBS BUILDERS

Specialising in Driveways, Brickwork, Patios, Fencing, Landscape Gardening. Tree work undertaken (lopping, felling and clearing).

General household repairs, painting, plastering, power jetting & cleaning.

No job too small!!! All work guaranteed and insured.

**For free advice and quotations please call: 07825 168010/ 01303862361** (anytime)



## Financial Planning

**David Gridley - Chartered Financial Planner**

Range of quality advice from a fully qualified adviser:

- Pre- and Post-Retirement Planning
- Investment Planning
- Inheritance Tax Planning

For further information, please contact our Lyminge office

David Gridley FPFS

Tel: 01303 863959 Email: davidgridley@sjpp.co.uk

**MWH**

Window and gutter cleaning service

**Mark Haley**



Lyminge and surrounding areas

For a free no obligation quote, please contact me

Mobile: 07738 479202

Home: 01303 863 702 Email: haleymark161@gmail.com

Find us also on Facebook

**Ashman Consulting Ltd**



**Straightforward I.T.**

**Advice  
Training  
Solutions  
Support**

**Steve Ashman**

**07702641981**

**info@ashman-consulting.co.uk**

**T. Metcalfe Fencing Contractors**

Approved Expert Installer for Jacksons Fencing

Established over 30 years

Fully insured - Highly experienced teams



Panel fencing, gates, decking, pergolas, post & rail, stock fencing, security, landscaping & tree surgery.

**01303 840201 07790 290 155**

metcalfefencing@btinternet.com

Proprietor - Derek Burr,  
Ash Ridge House, Elham



## Fincham Plumbing & Heating

We specialise in bathroom remodelling, including all tiling & pipework

Natural gas boiler servicing, Installation, Maintenance, Repairs, Replacement

All your plumbing requirements

Martin is a Qualified Plumber & Gas Engineer with over 30 years experience

Gas Safe, CIPHE, WIAPS registered

**Rosemary & Martin Fincham**

**07835 851 706 martinfincham@sky.com**



**Lou Lloyd**

**Carpenter**

**loulloyd@rocketmail.com**

**07984 426214**

Kitchens, Flooring, Wardrobes,  
Doors, Decking and more!

**HAND MADE CURTAINS,  
ROMAN BLINDS & SOFT  
FURNISHING**

**CURTAIN ALTERATIONS**

**TEL: VALERY WREN 01303 237755**



**D & S DOUBLE GLAZING SERVICES**

01303 863689 - 07912317915

We are a local company that specialise in double glazing repairs offering a wide range of service's that include: Replacement double glazed units - Locks - Hinges - Handles - Rubber Seals - Gaskets.

For a free estimate please call: 07912317915 or 01303 863689

or email: dsdoubleglazingservices@gmail.com



**CEDAR TREE CARE** City & Guilds

All types of tree work undertaken NPTC

Crown lifting, crown reductions,

dismantling and removals, hedge maintenance,

pollarding, stump grinding and removal, mobile saw milling,

wood land maintenance, all year round seasoned logs available

Fully insured and NPTC qualified with over 15 years experience

Call Tom: 07769 908027 email:linchlot5@gmail.com

**SPEARPOINT  
TREE SERVICES**

All Aspects of Tree  
Work Undertaken  
NPTC Qualified  
Fully Insured  
Please call **Shane** for  
a Free Quote  
**07963 203564** or  
**01303 621992**



**Sarah de Rougemont**

Craftsman/Co-ordinator

**UPHOLSTERY**

All commissions considered  
01227 455841 or 07973 377817



FULLY INSURED

## Elham Dog Training Club

Dog training and Pet care services

- Puppies from 12 weeks old
- Kennel Club Good Citizen Dog Scheme Puppy through to Gold
- 1-2-1 home-based puppy training also available
- Other pet care, dog walking and day cover available
- Other fun classes available - ask for details

Lyn Fagg 07866 234820

Email: Elhamdtc@gmail.com



FULLY INSURED

# Out & About..

Do you have any photos of local events or groups in action? If so can you please forward them along with a few words to [pbarnes20@icloud.com](mailto:pbarnes20@icloud.com)

In celebration of the Queen's Platinum Jubilee - a bench donated by The Lyminge Association and recently installed close to Church Road on Tayne Field.



The Undecides (local talent at its best) wowing the audience at the recent event in Lyminge Village Hall



The Crouching Dragon at China China helping to celebrate the arrival of the Chinese New Year.



## LYMINGE THEN AND NOW

This is the forth of a regular feature provided by the Lydinge Historical Society in which we hope to learn a little more about our historic community. Pairs of photographs will show how some well-known local views have changed, or perhaps how they have not changed very much, over the past 100 years or so.



The views above show the Methodist Church in Church Road, Lydinge. The older photo dating to around 1930 shows the church that was destroyed by a V1 flying bomb in 1944. The new church was built in the 1950s. Just visible to the right is the fence to Tayne Field, then used for grazing animals, as indeed it was into the 1960s.



## Judith Lansdell MBE

Mrs Judith Lansdell, who was well known in Etchinghill, has died recently at the age of 102. Judith lived in the village for over 50 years and was a good friend to many. Barbara Collins-Newing, who sat on the village committee with her says that Judith had a wealth of knowledge of the local area and was instrumental in getting the Christmas Tree purchased and planted outside the Golf Club. Judith sat on the Parish Council with Robert Godfrey, who says she was tough and opinionated but very loyal, hard working and someone who "never let you down".

Judith worked as Clerk of the Court at the Guildhall (Town Hall) in Folkestone until her retirement in 1981. Paula Godden knew Judith for 13 years and she says during this time, Judith housed and sold rabbits as well as making stained glass. She also belonged to the Lord Whisky Cat Sanctuary, taking in several cats. Every year Judith gave generously to the poppy appeal in support of the British Legion. Later, Judith took in a lodger who subsequently did her shopping and organised carers so she could remain in her house to the end. Judith was a member of the Etchinghill Residents Association committee and served as Chairperson until she was in her early 90s, when Dave McCombe took over.

In 1940, during her younger years, Judith joined the Wrens. She was posted to 2 gunnery schools: one in Portsmouth and one in Scotland, where as a cinema operator, she showed films on gunnery, weapon maintenance and radar detection finding. When a damaged ship came in with casualties, Wrens were often asked to help to sew the shrouds. Judith was very happily married to Harry when they moved to Folkestone in 1962. They lived next door to a nursery where she would go and visit the children. Later, they moved to Etchinghill, but sadly Harry died very suddenly. Judith, who cared about the environment, has donated some land to the Woodland Trust.

As Clerk of the Court Judith would often look after victims of crime to help them feel comfortable, particularly if they had to face their attacker. After retiring in 1981, this experience led her to become one of the first members of Victim Support Shepway, a charity where she worked tirelessly to help support the victims of crime. She was also a strong believer in discipline, one time lamenting that prison warders no longer dressed smartly and prisoners no longer called prison warders "sir". After 18 years, her hard work was recognised and in 1999 she was awarded an MBE. She went to Buckingham Palace with her stepson, Frank, to collect the award from the then Prince Charles. A fitting tribute to a remarkable lady.

**By Jacqui Blandford**

Photos: Judith with a card from Queen Elizabeth II celebrating her 100th birthday.  
Judith receiving her MBE from Prince Charles.

