

THE LYMINGE NEWSLETTER

For the communities of LYMINGE, ETCHINGHILL, RHODES MINNIS and POSTLING

Produced by
THE LYMINGE ASSOCIATION
www.lyminge.org.uk
February 2022
From The Lyminge Association

Now that 2022 is well underway and the effects of the pandemic are slowly beginning to fade into the past (we hope), our thoughts are turning to plan specific events for the coming year.

We have yet to put in dates in the diary but we are planning a **spring and autumn Garage Sale**, an **April music event** as well as supporting the **Queen's Platinum Jubilee celebrations** being organised by Lyminge Parish Council in June with a **Street Party** and a **Not-Cruft's Dog Show**.

So watch this space and if there are any other ideas of events that people would like to see in our area, please contact us via the chair of The Lyminge Association - Nancy Benham (nancybenham@aol.com or 07840796383).





**Laing
Bennett**

Independent estate & letting agents

Thinking of Moving in 2022?

Your local family run Estate Agent is **NUMBER ONE!**
In 2021 we agreed more sales in the **LYMINGE**
and **ELHAM** postcodes than any other agent.

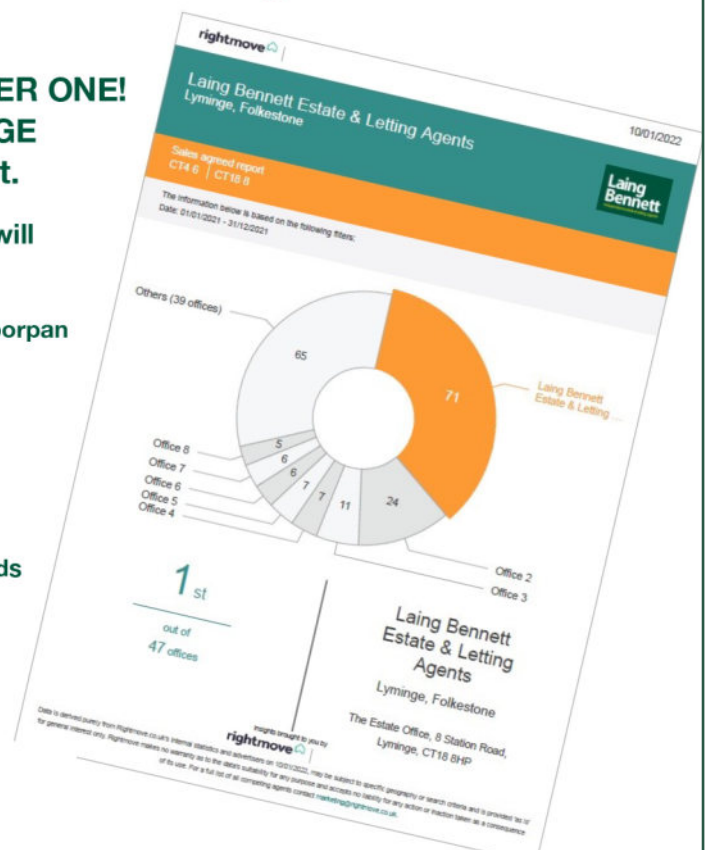
When selling your property with Laing Bennett you will benefit from:

-  **FREE Professional Photography and Property Floorpan**
-  **FREE Rightmove Premium listing**
-  **FREE Social Media Advertising Campaign**
-  **NO agency agreement tie in period - in other words we will NOT sign you up for a 20 week contract**

Call 01303 863393 for a **FREE no obligation Market Appraisal**

See all our properties at



Margaret Saunders' Meanderings

This month's meanderings encompass two identical walks taken on very different days just over two weeks apart. The first was a misty monochrome day, one in a series of similar such days that we experienced in the run-up to, and following Christmas. They were not my ideal walking conditions but I wanted some milk from the farm, so I set off in the early afternoon, knowing that with the mist, I must be back before the light began to fade - it was at its minimum level two days before the solstice.



Everything was dripping: little drops had formed on all the twigs and leaves and larger drips came down from the trees when a bird took off. If the sun had been shining it would have been a world full of sparkling diamonds, but it was not, so I tried to make the most of these unpolished 'gems'. However, whilst looking at the ground as I walked I noticed little clusters of cobwebs clinging to the grass, so out came my macro lens and a few minutes later and with two wet knees, I had captured the tiny globules of moisture which were so delicately decorating the almost invisible threads. The ground was dotted with these wonders, so easily missed when tramping along. Either side of the track similar drops were hanging from the seedheads of hogweed and nipplewort.

Crossing the main road I descended the slope towards the Nailbourne and was unsurprised to see that it had risen and was running faster, swinging round a bend on its journey northwards and then finally eastwards as it joins the grown-up waters of the English Channel. Would it still be above ground at Ottinge I wondered? There was no view of the hills today but I was happy that I could see far enough ahead not to worry about getting lost. I took the shortcut through the blackthorn thicket and crossed the field of sheep, stillness and quietness enveloping me as closely as the mist. The water table had risen and was filling a dip, forming a large lake but no water as yet was running along the dry stream bed.

I collected the milk and on passing this lake on my return, I could no longer see the gate I needed to pass through. The hedge line was just visible, so I made for that, following it until I found the gate. Skeletal trees mysteriously loomed out of the gloom, dark and stark.

Coincidentally, just over two weeks later I walked the same walk at the same time of day, again with the intention of purchasing milk. However, the day could not have been more different - the sun was shining in a completely cloudless sky and colour had replaced the monochrome, albeit in Winter's subdued palette. As I approached the stream, it was running faster and fuller, having risen further up its little banks. At one point it tumbled into a slight hollow on its bed and I paused to listen to the bubbling melody of its Winter song.

Unbelievably long tree shadows produced by the low sun stretched across fields where sheep grazed, carrying this season's lambs.

A parliament of crows took off noisily, amusing me by the similarity of sound to that of PMQ time in the House of Commons! Starlings too were rising in a flock, swooping and swerving then landing in another spot, a mini version of a murmuration. Small tufts of sheep's wool were caught in the metal fencing.

The lake had expanded and two ducks were swimming in the still water. Further away, where the water table had risen to the surface, eight more ducks were feeding in their new habitat. At yet another point, a hollow in the ground was filling with water as I watched, the spring from below feeding it, causing gentle uneven ripples to move the surface. At Ottinge, the stream now filled the watercourse, which two weeks earlier had been dry. Tall pine trees reached for the sky and amongst the topmost branches I could see fresh fir cones catching the last of the warm coloured sun. These trees set against the clear blue of the sky reminded me of the Mediterranean. But not the temperature. As the sun began to fall behind the hills, a chill could be felt in the air.

After a last long gaze at the hills, peppered with sheep, I turned for home. Ahead I saw something white by the bend in the stream - an egret was standing in the water and pecking at the bank. Standing still, I watched for a while, before tentatively edging closer in the hope of getting a photo. But it kept a wary eye upon its surroundings and after a while, took off on a low and graceful flight across the field to another part of the stream, well away from me. What a privilege to have seen it.

Looking up as I neared home, a lone aircraft trail was pushing westwards, like a slow shooting star as it caught the now setting sun's rays. To its east, the newest of crescent moons showed faintly white - thin, delicate and elegant as it hung in the heavens. A new moon for a new year.



Diary of Forthcoming Events

This page is printed to give readers and organisers the opportunity of planning events without clashing with existing ones, which are already in the 'diary'. It is not intended as a means of advertising and we take no responsibility for errors or omissions. Acceptance is at the discretion of the editor. Please send your updates by email to pbarnes20@icloud.com or via methods outlined on Page 4.

Location and name codes below:

One-Off Events

Date	Time	Event	Where	Tel. No.	Date	Time	Event	Where	Tel. No.
1 and 2 Feb		Chinese New Year	China China		25-Mar	7pm	Music On Friday	LPC	
13-Feb	2.30pm	Thoughtful Food Workshop: "Get Ready To Grow"	See p15	07703149008	24-Apr	2.30pm	Thoughtful Food Workshop: "Potting and Planting"	See p15	07703149008
11-Mar	TBA	Quiz	AgeUK		21-May	10am	Pick Up A Plant	TBA	
20-Mar	2.30pm	Thoughtful Food Workshop: "Seeds and Sowing"	See p15	07703149008	2-5 June		Queens Platinum Celebrations		

Weekly Events

Day	Time	Event	Where	Tel. No.	Day	Time	Event	Where	Tel. No.
Mon	9.30am	Dementia & Me Unit	JC	269602	Wed	11.45am	Pilates	TC	07825109670
Mon	10am	Open House Coffee House	EVH	863394	Wed	1.30pm	Dementia Café	JC	269602
Mon	10am	Bridge Club	LBC	863177	Wed	2pm	Bingo (Start date TBC)	EVH	
Mon	10.30am	Carers Coffee Morning	JC	269602	Wed ⁵	3pm	French Conversation	Call	862972
Mon	10.30am	Lyminge Larks (Singing)	LMC	07951572920	Wed	7pm	Tayne Centre Circuits	TC	07925982995
Mon	11am	Pilates	TC	07825109670	Wed	7.30pm	Cantores Dominicæ Choir	LVH	07840796383
Mon	12.30pm	Lunch Club	JC	269602	Thurs	9.30am	Dementia & Me Unit	JC	269602
Mon	2.30pm	Knit and Natter	TC	863049	Thurs	10am	Lyminge Art Group	EVH	
Mon	6.30pm	Ballroom/Latin/Salsa Dancing	TC	07966751991	Thurs	10.15am	Baby Rhyme Time	LL	03000413131
Mon	6.30pm	Judo Club	LVH	862946	Thurs	1.30pm	Cream Tea	JC	269602
Mon	5.30pm	Pilates	EVH	07951608008	Thurs	2pm	Art Group - afternoon	TC	07870494644
Mon	7pm	Pilates	EVH	07951608008	Thurs	3.30pm	Pilates	EVH	
Mon	7.30pm	Yoga	RMVH	07977503897	Thurs	5pm	Pilates	TC	07951608008
Tues	9.30am	Dementia & Me Unit	JC	269602	Thurs	6pm	Pilates	EVH	
Tues	9.30am	Dance Fitness Class	EVH		Thurs	6.15pm	Pilates	TC	07951608008
Tues	9.45am	Young at Heart Dance/Fitness	EVH	07565182259	Thurs	6.45pm	Short Mat Bowls	LVH	863842
Tues	12noon	Pilates	EVH		Thurs	7pm	Pilates	EVH	07951698008
Tues	2pm	Pickleball	EVH	863819	Thurs	7.30pm	Ballroom and Salsa Dancing	EVH	07967979610
Tues	6.45pm	Short Mat Bowls	LVH	863842	Fri	8am	Chiroprody (appointment only)	JC	269602
Wed	9.30am	Dementia & Me Unit	JC	269602	Fri	9.30am	Dementia & Me Unit	JC	269602
Wed	9.30am	Age UK Info & Advice – drop in	JC	269602	Fri	9.30am	Art Class		
Wed	10am	Baby/Toddler Group	EVH		Fri	10am	Feel a Fairy Tale Sensory	EVH	07800737936
Wed	10.30am	Cognitive Stimulation Therapy	JC	269602	Fri	10.15am	Talk Time	LL	03000413131
Wed	10.30am	Carers' Dementia Café	JC	269602	Fri	12noon	Cognitive Stimulation Therapy	JC	269602
Wed	10.45am	Singing for Health	JC	862364	Fri	7pm	Table Tennis	EVH	

Monthly Events

When	Time	Event	Where	Tel. No.	When	Time	Event	Where	Tel. No.
1st Mon	2pm	RBL, Elham Valley	St Mary's	862508	4th Wed	2.30pm	RM Circle	RVH	862913
3rd Mon	7pm	Etchinghill Cinema Club	EVH	07544670363	Last Wed	7.30pm	Quiz Night	C&H	862694
Last Mon		Parish Council Meeting	SNL	07715221705	4th Fri	7.30pm	Beetle Drive	RVH	862616
1st Tues ³	7.30pm	LHS Talk/Event	TC	863879	Last Fri	1.30pm	Team Quiz	JC	269602
3rd Tues ²	7.30pm	Gardeners' Society	TC	07703149008	1st Sat	9am	Saturday Market	TC	07977899555
Last Tues	10.30am	Lyminge Poetry Group	LL	03000413131	2nd Sat	10am	Postling Ch. Coffee Morning	PC	863536
1st Wed	10.30am	Lyminge Friends	LMC	862598	2nd Sat	10am	Ethelburga Quilters	EVH	

¹ In term time only ² Except Jan and Feb ³ Except Jan, Feb, and trip in Aug ⁴ Except Aug and Dec ⁵ Not held in August

C&H: Coach & Horses; **EVH:** Etchinghill Village Hall; **ELVH:** Elham Village Hall, **ERA:** Etchinghill Residents' Association; **ES:** Elham Square, **EVL:** Elham Valley Line Trust, **JC:** Jubilee Centre; **JF:** Jubilee Field; **KH:** Korf House; **LB:** Laing Bennett; **LBC:** Bowls Club; **LL:** Library; **LMC:** Lyminge Methodist Church; **LPC:** Lyminge Parish Church; **LPS:** Lyminge Primary School; **LVH:** Lyminge Village Hall; **LW:** Lord Whisky; **NP:** Nailbourne Court; **PC:** Postling Church; **PH:** Lord Whisky, Park House; **PVH:** Postling Village Hall; **RVH:** Rhodes Minnis Village Hall; **RMC:** Rhodes Minnis Church; **RMCS:** Rhodes Minnis Cat Sanctuary; **RR:** Rigden Room; **SMVH:** Stelling Minnis Village Hall, **SNL:** See Newsletter for info; **SP:** Sibton Park; **SPCC:** Sibton Park Cricket Club; **TC:** Tayne Centre; **TF:** Tayne Field; **WF:** Well Field



St Mary and St Ethelburga Parish Church, Lyminge

6th February

Lyminge 10am WOW Service
Paddlesworth 6pm Evensong

13th February

Lyminge 8am Holy Communion - BCP
6pm Evensong

20th February

Paddlesworth 9.30am Holy Communion CW1
Lyminge 10am Sung Communion CW1
Paddlesworth 6pm Evensong

27th February

Lyminge 10am Songs of Praise

To contact the churches, please phone:
Reverend Jane Weeks 01303 840219
or email revweeks@hotmail.com
www.elhamvalleygroupofchurches.co.uk or
www.achurchnearyou.com

Postling Church Services

6th February 9.30am Communion Service
13th February 8.30am Breakfast Service
20th February No service in Postling
27th February 5pm Quiet Service of Contemplation

Lyminge Methodist Church

A warm welcome awaits you at the following services to be held at **11am**, adhering to Government guidelines.

6th February - Local arrangement

13th February - 10.15am Valley Service at Elham

20th February - Rev. Gill Songer (incl. Holy Communion)

27th February - Mr Tom Lewis

Rhodes Minnis Chapel

A warm welcome is extended to anyone who wishes to join us for the following services held at 9.30am. Some Covid restrictions may still be in place which will be strictly adhered to.

6th February - No service

13th February - No service at Rhodes Minnis but we will be joining in a Valley service at Elham at 10.15am

20th February - No service

27th February - Mrs. Lisa Cooper

Christians in Lyminge



CHRISTIANS IN LYMINGE

5th February: Tayne Centre Market 9am

25th March: Music on a Friday "Big Band Sound" at the Parish church.

Lyminge Newsletter

Terms & Conditions: Copy deadline for next edition - 18 February 2022

Please email your copy to the editor (pbarnes20@icloud.com). Your payment must be received before your article or advert can appear in the Newsletter. Please leave your payment along with your name, organisation, telephone number and copy of your ad in a sealed envelope at the Lyminge Library.

Business adverts cost from £9.50 per month or £95.00 per year. **Personal and charity adverts and articles** from £3 per month, or £30.00 per year. The annual rate offers 12 entries for the price of 10. Please make cheques payable to '**The Lyminge Association**'. If you do not have email, a typed paper-copy may be left with the payment at the Library. Printed by Canterbury Print & Mail.

Lyminge Association accepts no liability for the accuracy of the advertisements or subsequent actions arising in conjunction with advertisers in the newsletter.

Further details from Peter Barnes (editor) on 01303 863737 or pbarnes20@icloud.com

District Councillors' Update - February 2021

We'd like to remind everyone of **MyAccount** which is designed to help you find council information relevant to you. Registered users can find details about their Council Tax, benefits, bin collections, ward councillors, and more in one place. More services are being added to **MyAccount** and you should find it's an easier and quicker way to interact with the Council. You can register or log-in at www.folkestone-hythe.gov.uk



Household support fund – Your District Council has been given a Government Grant for a Household Support Fund (HSF), which subject to availability, will run until 31 March 2022.

Anyone aged 16 or over and living in the district in a vulnerable household may be eligible for a payment. Vulnerable households are defined as those that are struggling to afford essential food and utility bills and have no other available support. Grants are available for families with or without children. For full details of the criteria and to make an application, go to <https://www.folkestone-hythe.gov.uk/household-support-fund>

Budget 2022-2023 – Your District Council is required by law to set a balanced budget by early March and then issue bills and collect council tax not just for themselves but on behalf of all other bodies entitled to charge council tax. The largest share of your council tax goes to KCC, then the District Council followed by Kent Police, Kent Fire & Rescue and finally your parish council. At the District Council our Full Council to agree the budget is on 23 February. We would now like to hear your views on the specific budget proposals within the Budget Strategy as well as feedback on the general spending and income generation priorities for 2022/23 see <https://www.folkestone-hythe.gov.uk/consultations/budgetconsultation>

Police & Crime Commissioner (PCC) consultation on precept. The PCC is also asking for the public's views on the level of council tax to fund Kent Police and the Kent and Medway Police and Crime Panel (on which Jenny serves) will vote on this proposal in early February. You can comment by emailing: haveyoursay@kent.police.uk. See [Kent PCC: Office of the Kent Police and Crime Commissioner \(kent-pcc.gov.uk\)](http://Kent PCC: Office of the Kent Police and Crime Commissioner (kent-pcc.gov.uk)) for further details.

Scrutiny Committee – Residents are being asked to let your District Council know what local issues they would like discussed by the Scrutiny Committee. Suggestions for matters which are important to the community will help shape the council's Overview and Scrutiny Committee for the next financial year. While suggestions do not have to be limited to the council or the services it provides, proposed ideas cannot include planning applications, licensing matters, housing appeals or disciplinary issues. To share your ideas, please complete the form which can be found at folkestone-hythe.gov.uk/your-council/democracy/council-scrutiny Please note, you will be required to sign in to **'MyAccount'**. The deadline for submissions is Friday 25 February 2022.

We were pleased that waste and recycling collections took place as normal over the Christmas/New Year break and hope you've taken advantage of the free collection service to recycle real Christmas trees. If there are any problems with your collections we are always willing to pursue these with the responsible officers so do please contact us with the reference number for any report you have needed to make.

Just a quick reminder to be careful dealing with people/companies you only know on social media. A post was recently seen on a local Facebook site offering to collect waste. The company was not listed on the Environment Agency's list of registered waste carriers. If you employ someone to take your waste you must check they are registered. We'd also advise you to get a receipt and ideally take a note/picture of their licence plate. Criminals can charge hundreds of pounds to dispose of waste and then simply dump it. You can take most items to the Household Waste Recycling Centre, including washing machines, fridges, TVs, batteries even asbestos for no charge. Alternatively a bulky waste collection from your home by the District Council costs £30 for one item and £8 for each additional item to a maximum of four in all.

Susan Carey (susan.carey@folkestone-hythe.gov.uk 01303 670561) & **Cllr Jenny Hollingsbee** (Jenny.hollingsbee@folkestone-hythe.gov.uk 07887918458) - your district councillors for North Downs West, Folkestone and Hythe District Council

Your Village Hall Needs You!

Have you an hour or so to spare a week to help your community?

Lyminge Village Hall is looking for locals to come and join our friendly and welcoming team. Under new leadership, we want to improve our service to our community and develop old and new ideas to make our facility better. There are lots of projects and fundraising to organise.

We're looking for hosts to open up for hirers, people who can research and run maintenance projects or keep the website and social media updated.

What better time to join us and make a difference!

Please contact gerrydcruz@hotmail.com if you can help us in any way.



Lyminge Library Display Cabinets

Lyminge library is fortunate in having two display cabinets, which are used under the auspices of the Lyminge Historical Society. Languishing empty since March 2020, we put up a Christmas display, which was well received both by the library users and its management.

On behalf of the Lyminge Historical Society, Rosemary Piddock and I arrange the displays, and we now have a programme of displays planned for 2022, based on some of the anniversaries and events which will take place this year. The displays will contain printed information and relevant artefacts.

Winnie-the-Pooh is 100 this year! This will be the first display, to be set up in early February. This will be followed (not necessarily in this order) by the 70th anniversary of Agatha Christie's *The Mousetrap* (closing only due to Covid in all this time); marking the release of the 1921 Census; the Queen's Platinum Anniversary; the 100th anniversary of the BBC and something to do with bellringing, which has a number of anniversaries this year, marking the first time that certain changes were rung. Then, of course, we will celebrate Christmas again in some way.

Please visit the library to see the displays, and to support your local library!

Vanessa Carr



ETCHINGHILL RESIDENTS' ASSOCIATION

Film Night

'The Last Bus'¹²

Monday 21st February 2022

Etchinghill Village Hall - 7 for 7.30pm

Entrance Fee £5 pp

Open to new and existing members

Free Refreshments and Raffle

www.etchinghill.info

POSTCODE LOTTERY SCAM

- from KCC Public Protection



There is currently a scam telling people by text, email or letter from the People's Postcode Lottery that they have won a large amount of money.

Legitimate lotteries will never ask you to pay anything to receive your winnings or to keep your winnings a secret. If you haven't bought a ticket, you can't be a winner. If you have entered a competition, you can only win the prize which has been advertised.

If you are unsure about anything you receive from People's Postcode Lottery, contact them on 0808 109 8765 or info@postcodelottery

For advice and to report issues to KCC Trading Standards contact: Citizens Advice consumer helpline: 0808 223 1133 or Consumer Advice scams action line: 0808 250 5050. Mon to Fri from 9am to 5pm. Or visit the website: <https://www.citizensadvice.org.uk/consumer/scams/get-help-with-online-scams/>

Additional Newsletter Deliverers Required

Could you help The Lyminge Association by delivering some of the newsletters?

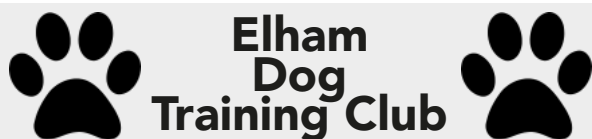


We currently require 5 additional volunteers to continue the monthly deliveries to all properties. A delivery round normally takes about 1 hour per month. If you think you can help, please contact Richard Chubb: phone: 01303 862015 or email: richard@thechubbs.plus.com for more information

Van For Sale

Mercedes VITO 111 CDI Long SWB

One owner 2008 54000 miles MOT until August
Full service history £3950
Contact 07808 775 302



****NEW CLASSES STARTING FROM FEBRUARY 2022****

FULLY INSURED

Dog training and Pet care services

- Puppies from 12 weeks old
- Kennel Club Good Citizen Dog Scheme Puppy through to Gold
- 1-2-1 home-based puppy training also available
- Other pet care, dog walking and day cover available
- Other fun classes available – ask for details

Lyn Fagg 07866 234820

Email: Elhamdtc@gmail.com



Lyminge Bridge Club New Members Welcome

Come and play a friendly game of Bridge every Monday from 10am to 12noon at Lyminge Bowls Club

We play Rubber and Chicago Bridge (not Duplicate) in a pleasant, social atmosphere.

£1 a week includes tea, coffee and biscuits and there is a very small annual affiliation fee to the Bowls Club.

Just turn up on any Monday or for further information contact:

Janet Fry on 863177 or janet@rhodesminnis.org.uk



TIME FOR ME

**GET TOGETHER
MEET NEW PEOPLE**

BY SIGNING UP YOU WILL RECEIVE:

- ✓ A regular newsletter - be the first to hear about new events
- ✓ Discounted Sunday lunches at the Hythe centre
- ✓ Discounted rates to trips and social meets
- ✓ Access to our Facebook group for members

One year membership
ONLY
£20

I WOULD LIKE TO JOIN THE INBETWEENERS SOCIAL GROUP

I enclose my cash/ cheque for £20 for one years membership.

Name: _____

Address: _____

Email: _____

Please tick box to confirm you would like to receive the newsletter.

Sign: _____ Date: _____

Age UK Hythe and Lyminge will not share your information with any third parties.

Registered charity number 1125274. Company number 6589817
01303 269602



Calling all 55 and over's

FEBRUARY 2022

MON	Carers coffee morning for those living with Dementia Seated exercise Cognitive Stimulation Therapy Lunch club Monday Bingo Valentine secrets (music etc)	10.30am - 12pm 10:45am - 11:45am 10.30am - 12 noon 12.30pm - 1.30pm 1.30pm - 2.30pm 10am - 2.30pm	Forget Me Not Café Lyminge Age UK Hythe Age UK Lyminge Forget Me Not Café Lyminge Age UK Hythe Age UK Hythe and Lyminge
TUE	Seated exercise Seated yoga Boules/Curling Dance Fit Fish and Chip night (TFM)	10:45am - 11:45am 10:45am - 11:45am 1:30pm - 2:30pm 5pm - 6pm 6pm - 8pm	Age UK Hythe Guide Hall Hythe Age UK Hythe Age UK Hythe UK Hythe Age UK Hythe
WED	Walking football Low impact Aerobics Seated exercise Reminiscence with Pat Photography to art Book club (9.2.22)	10.30am - 12 noon 10:30am - 11:30am 10:45am - 11:45am 1.30pm - 2.30pm 1.30pm - 2.30pm 5pm - 7pm	Scout Hall Guide hall Hythe Age UK Hythe Age UK Hythe Age UK Hythe Age UK Hythe
THU	Seated yoga Cognitive Stimulation Therapy Streetz 2 streetz Out and about Knit and Knatter (10.2.22) Bingo Night (3.2.22)	10:45am - 11:45am 10.30am - 12 noon 11.30pm - 1pm 12.30pm - 3pm 4pm - 7pm 6.30 - 8pm	Girl Guide Hall Age UK Lyminge Age UK Lyminge Anywhere we fancy Age UK Hythe Age UK Hythe
FRI	Art and craft Games and cards Shed project Games and quizzes or music	10:45am - 11:45am 10:45am - 11:45am 1pm - 2.30pm 1.30pm - 2.30pm	Age UK Hythe Age UK Hythe Age UK Hythe Age UK Hythe

Coming Events

3rd March - Walking Tennis, Hythe Tennis Club
6th May - Walk Right Back, Eversley Brothers - Lease Cliff Hall
2nd June - Some Guys Have All The Luck - Rod Stewart - Les Cliff
Hall 24th June - The Drifters - Leas Cliff Hall



TO BOOK
CALL
01303
269602

Registered charity number 1125274. Company number 6589817



Editor: pbarnes20@icloud.com

7

Tel: 01303 863737



QUIZ NIGHT

Friday 11th March
Age UK Lyminge

£5 pp (pay on the night) tables of 6
Booking essential 01303 269602

Refreshments available but you are welcome to bring your own food and drink



**Freshly Prepared
Breakfasts & Light Lunches
Home Baked Cakes
Coffees
Teas**

Takeaway Available

Open Tuesdays to Saturdays
Dog Friendly

THE COFFEE CABIN TEA ROOM LTD.
CANTERBURY ROAD, LYMINGE, KENT.
CT18 8HU. 01303 864222
Instagram @thecoffeecabintearoomltd
Find us on Google Maps

Pet Photography

Studio or Location

Photo session & 2 prints £50

Call Albane to book!

07957 207 891

ALBANE PHOTOGRAPHY
72 Sandgate High Street,
Sandgate, CT20 3BX
info@albanephotography.com
@albanepetphoto



Albane
PHOTOGRAPHY

FOLKESTONE - HYTHE OPERATIC & DRAMATIC SOCIETY PRESENTS

AGATHA CHRISTIE'S



**AND THEN
THERE WERE
NONE**

17-19 March 2022

An amateur production presented in arrangement
with Concord Theatricals Ltd on behalf
of Samuel French Ltd.

Tickets from £11

BOX OFFICE 01303 223925
or towertheatrefolkestone.co.uk



The Tower Theatre, North Road, Shorncliffe, Folkestone CT20 3HL

Lyminge Friends - February 2022

Happy New Year Everyone

In January, Wendy Fraser took us on **A Visit to Florence** which was very interesting, and afterwards we had an enjoyable Lunch in the Kings Arms, Elham.

Our next meeting is on Wednesday 2nd February 2022 when Mike Bundock will talk on **The Craft of the Clockmaker**.

On 2nd March, we will have a talk from Steve Edney on **The Salutation Gardens**, where he is Head Gardener

Please wear a mask or shield and use the hand sanitiser provided.

Meetings are 10.30am - 12pm in the Methodist Church. Entry for 2022 is £3.50

We are a friendly social group and welcome new members so just drop into a meeting, or if you'd like to talk to one of us first, please call 863500.



Fifth Trust Update www.fifthtrust.co.uk

We are pleased that we now have good supplies of logs in stock. We apologise for the supply problems experienced recently. Since the log business is part of our social enterprise activity, all profits go towards the day services we offer to adults with learning disabilities. It also provides the opportunity for our students to benefit from rewarding work experience, as they help in deliveries and also offer a free outside stacking service where possible. For full details of what is on offer and delivery options, please visit www.vineyardgardencentre.co.uk/logs or call 01227 831052.

**MUSIC ON
A FRIDAY**

IS PROUD TO PRESENT

**THE BIG BAND SOUND THAT'S
COMING TO LYMINGE**

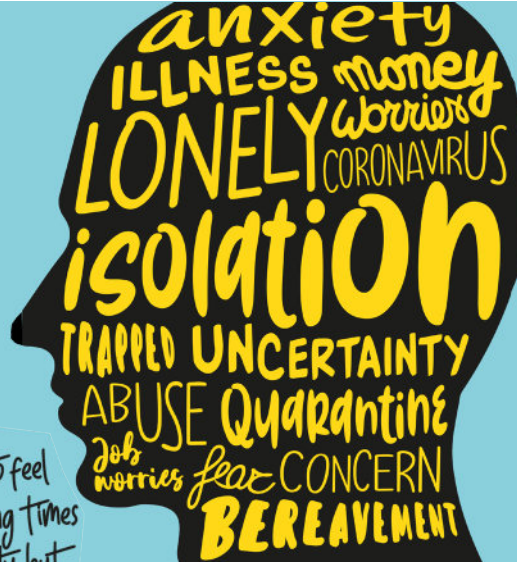
**THE FOLKESTONE
COMMUNITY
SWING BAND**

ON FRIDAY 25TH MARCH 7.00PM
AT LYMINGE PARISH CHURCH
ENTRANCE, CHEESE AND WINE - ALL FREE
COME TO RELIVE THOSE GLEN MILLER,
GERSHWIN SOUNDS AND MANY MORE

"Positive anything is better than negative nothing."

Elbert Hubbard, Writer

Editor: pbarnes20@icloud.com




anxiety
ILLNESS
money
worries
LONELY
CORONAVIRUS
isolation
TRAPPED
UNCERTAINTY
ABUSE
Quarantine
Job
worries
fear
CONCERN
BEREAVEMENT

It's natural to feel
anxious during times
of uncertainty, but
help is available

Call 0800 107 0160
Text the word Kent to 85258
or visit releasethepressure.uk

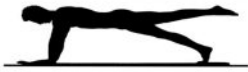
A BETTER
MEDWAY
Support is free, confidential and available 24hrs a day.
Supported by independent charities and funded by Kent
County Council, Medway Council and NHS partners.



PILATES

in Etchinghill

NEW CLASS!
Starting 8th
February



TUESDAYS
5pm

Suitable for mixed abilities

Limited spaces - booking needed

Etchinghill Village Hall

Luciana Clarke
07944028445
lucianaclarke.pilates@gmail.com
www.lucianaclarkepilates.com



We have space available for Lengths/Improvers for Expanded Learn to Swim Scheme (Swim England LTS Level 4+)

Due to the expansion of our successful (nationally accredited) Swimschool at Hythe Aqua we currently have immediate vacancies for lengths and intermediate level swimmers

Club Secretary: 01303 862353

family.parris13@btinternet.com www.hytheaqua.org.uk

Rhodes Minnis Circle

We meet again on 23rd February when we look forward to **Daphne Andrews** telling us about her **Hobbies and Collections**. The competition is an item beginning with the letter 'O'

We meet at Rhodes Minnis Village Hall at 2.30pm and visitors will be made very welcome.

Marion 862913

TAYNE CENTRE MARKET

Resumes Saturday
5th February 2022

Refreshments available.

For further information or to discuss
booking a table please contact

Debbie 07977 899559



*Lyminge
Historical
Society*



COME AND JOIN US!

Our 2022 Programme of Events starts in March

Tuesday 1st March at 7.30pm in the Tayne Centre

A Story About Silk - An illustrated talk by Dr. Ben Marsh
Dr. Marsh is Reader in American History at the University of Kent. You may also remember him in 'one of our silly family songs' on TV in February last year. YouTube/ZnbOKH9Oe9s

In his talk we hear of the aspirations of many women to make silk thread for the huge demand at the time of James 1. But making silk thread is not an easy task as Ben and his family discovered rearing silk worms during lockdown. We all have dreams but not all come to fruition!

This should be a lively evening to start our new season of talks so do come and bring your friends.

Tuesday 5th April at 7.30pm in the Tayne Centre

The White Cliffs

How geological, economic and political factors have shaped this coastline. An illustrated talk with John Buss

Note: Lyminge a history Part Eleven is out now and can be purchased through the Lyminge Village Store, The Coffee Cabin and Lyminge Library, or on-line via our website using Paypal, along with all other Lyminge a History publications!

Plus: purchase Parts 1-5 as a bundle for £22 or Parts 1-10 for £50*
To take advantage of the offer please call Daphne Andrews on 01303 862865. This bundle offer is not available from the shop.
***Postage and packaging extra**

Email: lymingehistoricalsociety@gmail.com

Website: www.lymingehistoricalsociety.co.uk

Facebook: www.facebook.com/Lymingehistoricalsociety



Now that 2022 is well under way, we're busy planning some fun events to look forward to in the coming months.

We are particularly hoping to hold something Easter-themed to ensure an egg-cellent start to the holidays. So watch this space (and our Facebook page @LymingeyouthAction).

In the meantime, we'd like to say a big thank you to everyone who continues to send in donations outside of these events too. Every pound raised is getting us excitingly closer to rebuilding the Tayne Field and Jubilee Field parks.

So if you haven't yet donated - or it felt so good the first time you're itching to dig deep again - please do give what you can via our crowdfunding page - gofundme.com/lymingeparks - and be a part of transforming the play opportunities for local children and their families.

All the best **LYA**

Etchinghill Update - February 2022

ETCHINGHILL RESIDENTS' ASSOCIATION (ERA)

Chairman: David McCombe, 07939 076617, email dmccombe1@gmail.com

Website: www.etchinghill.info, Facebook: Etchinghill

FILM NIGHT: MONDAY 21ST FEBRUARY: 'THE LAST BUS' (12).

Drama - Starring Phyllis Logan, Timothy Spall and Grace Calder. A heart-warming tale of Tom (Timothy Spall), a pensioner whose wife, Mary (Phyllis Logan), has just passed away, who travels from John O'Groats, to his original home town at Land's End, using his free bus pass. He carries with him only a small suitcase as he travels the length of the country. Along the way, his adventures are recorded by the people he meets and helps and by the end of his trip he has unwittingly become a social media celebrity. The entry fee is only £5pp (please have the exact money ready to reduce handling by our volunteers) and includes a glass of wine, tea or coffee and a free raffle. Prior reservation is not required and new members are welcome. A collection box is available by the serving counter should you wish to make a donation.

Please note: The wearing of face coverings (visors are not an acceptable alternative unless worn with a face mask) is, at present, a requirement of our hall hire agreement in line with government advice. Exceptions are whilst eating, drinking, or for medical reasons. We try to ensure adequate ventilation in the hall, so please dress appropriately on cold nights. For updates please refer to our website and to government notices as this information may change without notice.

QUEEN'S PLATINUM JUBILEE: Plans for a one-day event, jointly hosted by the ERA and the village hall trustees to celebrate the Jubilee over the Bank Holiday weekend of 2-5 June, are presently being formulated. **If you would like to support us, either with ideas or in organising the event, please get in touch as we would love to hear from you - details above.**

SOCIAL MEDIA SCAMS

From the NHS Counter Fraud. Be mindful when using Social Media, scammers see it as a great way of "conning you" out of your cash. Messages saying "is this you in a video" seem to be doing the rounds at the moment. The scammers try to get you to click on a link, which is likely to be harmful and may deliver malicious malware into your system. Remember never click on links unless you have confirmed that it is genuine. **If you think that you may have been a victim of this type of scam, then contact your Bank immediately and report it to Action Fraud at www.actionfraud.police.uk or calling 0300 123 2040.**

Jacqui Blandford, Etchinghill News Coordinator: jacqui.blandford@gmail.com, mob 07543 966830



AGM – 18th January 2022
Our thanks to those who attended the AGM which was held by Zoom this year.
The existing Committee were all re-elected.

AGM
Annual General Meeting

GARDENING WORKSHOPS

A series of Gardening Workshops arranged in conjunction with Thoughtful Food are being held again this year. The first Workshop will be "Get Ready to Grow" starting at 14.30 on Sunday 13th February.

For more information or to book your place please email:
thoughtfulfoodgroup@gmail.com

Lylinge Gardeners' Society

For more information about the Gardeners' Society please email:
lymingegardeners@gmail.com
or call Anne on 07703 149008



In aid of the LORD WHISKY SANCTUARY FUND
(Registered Charity 283483)
Park House Animal Sanctuary
Stelling Minnis CT4 6AN. Tel: 01303 862622
www.lordwhisky.co.uk

We look forward to seeing you at our fundraising events.

Boot & Spring Fayre - Saturday 7th May
Dog & Owners Fun Day - Saturday 28th May
Boot & Summer Fayre—Saturday 6th August
Boot & Late Summer Fayre - Saturday 10th September

All events are held at Park House Animal Sanctuary.
Boot Fair from 8am, Entertainment from 10am

Helpers and new ideas are urgently needed.
Please contact us on 01303 862622 or email lord.whisky@btinternet.com if you can help.



Kent Police have introduced a new messaging system which allows members of the public to receive messages directly from their local Police station and PCSO's.

All that sign up to the system will receive updates on various things such as community events; latest Scam alerts; Crime prevention advice as well as personal messages from your PCSO.

You can reply to messages to offer assistance with CCTV or information you may have about the message you received.

Please [sign up online on the My Community Voice Kent website](#) to start receiving updates.

Ashman Consulting Ltd



Straightforward I.T.

**Advice
Training
Solutions
Support**

**Steve Ashman
07702641981**

info@ashman-consulting.co.uk

In aid of the LORD WHISKY SANCTUARY FUND
(Registered Charity 283483)
Park House Animal Sanctuary
Stelling Minnis CT4 6AN. Tel: 01303 862622
www.lordwhisky.co.uk

The Lord Whisky Tea Room, Rhodes Minnis CT4 6XY
Winter opening hours 10am-4pm
Summer Opening hours 9am-4pm

Don't forget we can cater for birthday parties, wakes, meetings etc., at times to suit you. We also have a function room available.
Please ring 01303 862349

Low-Income Veterinary Clinics

The Lord Whisky Centre, Rhodes Minnis CT4 6XY
Tuesday & Thursday afternoon by appointment.
Unit 11a, Wealden Forest Park, Herne Common CT6 7LQ
Monday & Friday between 2pm and 3pm (walk-in)
The Veterinary Ambulance visits Macknade Fine Foods,
Selling Road, Faversham on alternate Mondays
(see our website for details)

Support
Your
Local Chickens

**Bridge Farm
Free Range Eggs**

Bridge Farm
Redhouse Lane
(off Greenbanks)
(01303) 863625

Don't be led up
the garden path...

...choose an agent
that gives straight
forward, honest advice.



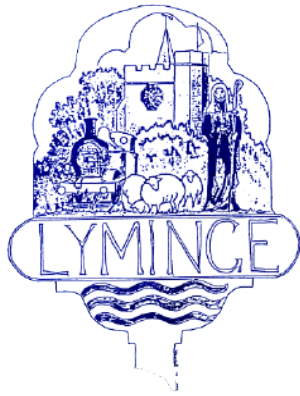
Call today for a free, no obligation valuation

Bridge Office - 01227 831999
bridge@colebrooksturrock.com
88 High Street, Bridge, CT4 5LB

Elham Office - 01303 840422
elham@colebrooksturrock.com
Bank Buildings, Elham, CT4 6TD

colebrooksturrock.com





LYMINGE PARISH COUNCIL

FEBRUARY 2022 Newsletter

Forthcoming Council and Committee Agendas are displayed on the Council notice boards on Tayne Field and the entrance to the Village Hall car park, Etchinghill. Agendas and minutes are published on the Council's website: www.lymingeparishcouncil.org.uk and Facebook page. We invite you to read the minutes online or on the noticeboards which may provide the information you are seeking regarding a particular item, but correspondence is always welcome from parishioners and can be sent to the Clerk at the addresses given at the bottom of this page.

COUNCILLOR VACANCY - A reminder that Lyminge Parish Council currently have a councillor vacancy, the deadline for applications is Sunday 20th February. If you would be interested in joining us or would like more information about the role, please contact the Clerk by email at lymingepc@btinternet.com or telephone 07715 221 705. Applications from Rhodes Minnis residents would be particularly welcome as that part of the parish is currently under-represented on the council.



NEIGHBOURHOOD PLAN - The Council have begun the process of considering a Neighbourhood Plan for Lyminge Parish.

The intention is that the Plan will cover the whole of the Parish, from Rhodes Minnis in the North, to Etchinghill in the South. LPC recently arranged for Folkestone and Hythe District Council to give a presentation to us on all aspects of the Neighbourhood Plan process, to which we invited neighbouring parishes who may

have similar ambitions to us, and whose Parishes share some of the same issues (such as being entirely within the Kent Downs Area of Outstanding Natural Beauty).

So, it is possible that Elham, Lyminge, Stelling Minnis, Bossingham, Postling and Elmsted will share resources, and produce our plans together, if we all share a similar outlook and timeframe.

The next stage, following agreement by Full Council, will be to proceed with a public meeting to involve the whole Parish in the process. We will need input from a variety of organisations and individuals to achieve what is likely to be a big piece of work, but we are confident that the outcome will bring huge benefits to the Parish, all of which will be described to you at the Public Meeting. Hopefully, the pandemic will not be a delaying factor in this process.

POND UPDATE - We will continue works on the new pond at the bottom of Court Lodge Green, once the water-level has dropped and the surrounding grounds are dry enough, probably sometime in April or May. This will involve some more digger activity, followed by planting and seeding of the surrounding soils to develop wildlife-friendly habitats in and around the pond.

ADVERTISING THE ATTRACTIONS OF OUR LOCAL COMMUNITY

- Last year the Parish Council bought a new noticeboard for the Station Road car park and at that time we rearranged the boards to tidy up the layout. Since then we have been partnering with a number of local groups to create a range of new information panels which have now been installed.

The two new noticeboard panels facing Station Road have been created by the same design team that created the heritage trail installed between 2018 and 2021, and the archaeology display in the church, so we have achieved consistency of look and feel.

The Pathways to the Past project has funded the new material for the Lyminge Historical Society board, focusing on the two key historical events that have shaped Lyminge: the arrival of Christianity in the 7th Century, and the arrival of the railway in the 19th. The panel on the Parish Council's board features a parish map showing public rights of way and named walking routes that pass through the parish, as well as facilities like food outlets, toilets and parking.

Watch out for the 'Did You Know' panel featuring quirky and interesting facts from our local history. This panel will change every couple of months, so come along and check this out.

In addition, on the car park side of the Council's board are two new posters created for us by Elham Valley Walkers Group presenting a ring of walking routes around Lyminge. The Council is pleased to sponsor EVWG, who run the popular annual Elham Valley Walking Festival, and who also have created an interconnecting network of 21 circular walking routes along

the Elham Valley. Seven of these walking routes begin at the Station Road car park. You can download more information and detailed route cards at the EVWG website at <https://elhamvalleywalkers.co.uk>.



In order to make this information more widely available, we have also created a visitor leaflet. It is intended that this will be placed in various outlets around the parish, as well as in tourist information offices in the surrounding area. Our objective is to attract visitors to experience both the wonderful natural environment around us and to explore our rich heritage.



Please note that Parish Council notices will no longer be displayed on the Station Road noticeboard. Notices are displayed, as required by law, on the Council's website, and in addition on the noticeboard on Tayne Field, opposite the Methodist Church on Church Road.

FEBRUARY COUNCIL MEETING DATES (Covid restrictions permitting)

F&A Committee – Monday 14th February 2022 at 7.00pm at The Tayne Centre, Lyminge
Full Council – Monday 28th February 2022 at 7.30pm at Rhodes Minnis Chapel

Cherri Norman, Clerk and Responsible Financial Officer

Correspondence Address: Lyminge Parish Council, PO Box 1159, Canterbury, Kent
CT1 9PR

Telephone: 07715 221 705 Email: lymingepc@btinternet.com

www.lymingeparishcouncil.org.uk

www.facebook.com/LymingeParishCouncil



Thoughtful Food....

...is a group of local volunteers looking at our food, and how this impacts climate change. Our aims are to support people to produce more of their own food, and to shop locally, sourcing seasonal produce. We also run a community allotment in Lyminge and welcome new members.

Contact: thoughtfulfoodgroup@gmail.com or on Facebook and Instagram @thoughtfulfoodgroup

Our next meetings will be on **Tuesday 1st February** and **Tuesday 1st March**. Please get in touch if you would like to attend- we would love to see you.

What's In Season

With supermarkets providing a huge range of fresh food all year round, we have lost touch with what is in season. Seasonal food can be grown with far less energy and has a lower negative environmental impact. Plus it usually tastes better! Here is what to look out for in February to eat in sync with the season....

What's in Season in February?

Apples, Beetroot, Brussels Sprouts, Carrots, Celeriac, Chicory, Jerusalem Artichokes, Kale, Leeks, Mushrooms, Onions, Parsnips, Pears, Purple Sprouting Broccoli, Red Cabbage, Salsify, Savoy Cabbage, Spring Greens, Spring Onions, Squash, Swedes, White Cabbage.

Thoughtful Food Group @thoughtfulfoodgroup
A Lyminge Climate Action initiative



If you're stuck for ideas, why not try this Winter Pasta recipe...

- 1 large leek
 - 6 cloves of garlic
 - 2 handfuls, Cavello Nero, curly kale or cabbage
 - 100ml olive oil
 - 500g pasta
 - 100g Parmesan
1. Cut leeks into cubes and peel garlic
 2. Bring large pan salted water to boil and add leek and garlic. Cook 3 mins
 3. Add kale or cabbage, cook 3 mins - no longer. Keep water
 4. Put veg and add oil to liquidiser until thickness of double cream, season and put aside.
 5. Bring water back to boil, and cook pasta
 6. Drain, return to pan with sauce, heat through, add Parmesan, salt and pepper to taste. Serve with grated Parmesan

First Mini Plots Allocated at the Community Allotment

Our first mini-plots have been allocated with their new caretakers getting ready to start planting for the new season. We still have a few available, so if you would like to have a go at growing some veg, with our support, do get in touch - please email thoughtfulfoodgroup@gmail.com



A Date for your Diary... Pick Up a Plant on Saturday 21st May

Yes, Pick up a Plant is back for 2022! We will again be sharing surplus vegetable plants and encouraging you to do the same, for the third year running. This is a great way of boosting the content of your veg plot if you get off to a slow start, or even to grow some veg for the first time. Look out for more details in forthcoming newsletters!

Very best wishes from Thoughtful Food



Looking for help to rewild your land?

If you'd like to rewild your land in or around Lyminge Parish please let us know and we'll be happy to help. We are lucky enough to have some amazingly knowledgeable and experienced people in the Parish who are very willing to help you.

We can provide free advice on the most appropriate ways to rewild your land. We can connect you to support networks, and may even be able to organise community work-

parties for practical work. We can work with you to identify the best areas for tree or hedgerow planting, for encouraging natural tree regeneration, or for avoiding trees to promote flower-rich grasslands. We can advise on how to provide season-long plants for pollinators, where best to place bird and bat boxes, how to design or manage a pond, or how to create a flowering lawn.



We are here to help, and we are here to learn about your rewilding stories. There's always space in the newsletter for sharing your experiences as well.

Whatever your interest, please contact us and let's start the conversation.

Email us at lymingebiodiversity@gmail.com or call 01303 863426

Planting a hedge? Think native!

Now is a good time of year to be planting hedges, but if you are planting, or thinking of planting, please try to plant species native to the UK - there are plenty of choices, all of which provide more benefits to local wildlife than non-native plants. So try to avoid leyland cypress, cherry laurel, snowberry, and other non-natives, and look at the wide variety of natives. If you can allow your native hedge to flower and fruit then that is even better - simply work out when it is best to trim the species in your hedge to allow them to do that.

Deciduous plants are particularly good for pollinators and other insects (eg. hawthorn, crab apple, bird cherry, junberry, guelder rose, wayfaring tree, dogwood, goat willow, field maple), but if you want leaves all year-round then consider beech and hornbeam, or native evergreens such as yew, holly, or wild privet. If you already have a hedge of non-native plants, there is also the possibility of simply allowing wild (not ornamental) ivy to grow over it; if you allow it to flower it is a great source of late autumn flowers and winter berries, loved by insects and birds alike. Again, please feel free to contact us for advice and support.

Lyminge Climate Action plans for 2022

As always we'd like to hear from you, with ideas of things we can do or stories of what you are doing. Some activities we are already aware of for 2022 (all other things permitting...) include additional tree-planting (although less than previous years), the continued growth of the Thoughtful Food group (see the previous page), and the long-awaited Lyminge Parish Bioblitz - if all goes well this will be a great summer weekend of participatory activities for us all to meet with local wildlife experts to take an ecological stock-take of our local area. More details to follow...

PUZZLE TIME

L.A 2022 FEBRUARY SUDOKU



We Haven't a Clue...
Do you know the answer??

The item on the left was given to a person in Lyminge. The iron structure has been modified slightly to contain a string of electric light bulbs which can be seen through the glass lenses.

But what was its true function??

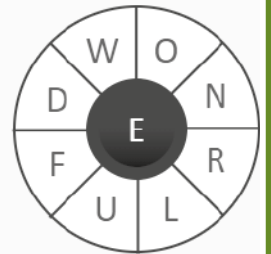
Please send your answers to the editor:
pbarnes20@icloud.com
or 07808775302

		6		4				
		1	9	8			6	3
	2					9		
5		2	7				9	
6		4						2
					4			
		9				7	2	
	5				7			
	1			3		5		6

POLYGON PUZZLE

L. A. Polygon Puzzle

Make as many words as you can from the letters. Always include the centre letter. Each of the letters in the polygon can only be used once in each word. The score for each word found is the number of letters in the word. All words must appear in your dictionary. There is at least one 9 letter word. Enjoy. The master word is printed below



Letters To The Editor.....

Mount Pleasant Christmas Lights

We would like to thank everybody that visited our Christmas lights and donated so generously to the charities we supported. In all we raised **£5600** and this means each of the charities will receive a cheque for £1120. **The charities we supported are: British Heart Foundation, MS, Hythe & Lyminge AgeUK, Cancer Research and Winstons Wish.**

See Photographs on P27

Any Clues???

Dear Sir,

My name is David Branson. The latest census data has just been released and I was trying to find my father, who lived in Dover. It showed him living in a household of six people, when there should have been five: my grandparents, two uncles and my dad who was six months at the time. My search showed them living at 6 Winchelsea Terrace, with six in the household, the sixth person being a girl by the name of Violet May Landall, born in 1902. **I did a bit more searching, and I think that her parents were Bertha and Richard Landall of Lyminge. I was wondering if someone could tell me if I'm correct.** If I'm right, what was she doing in my grandfather's terrace house?

Yours faithfully, *David W. Branson*

Please send any replies to dbranson@cogeco.ca

Editor: pbarnes20@icloud.com

Coach & Horses



For bookings and any other help needed, please phone 01303 901011 or check Facebook page 'Coach & Horses'

6	4	5	6	3	8	7	1	2
9	3	7	2	7	6	8	5	4
8	7	2	5	1	4	9	6	3
5	8	6	4	6	2	3	7	1
2	7	2	8	1	5	4	9	6
1	9	1	3	6	7	2	8	5
4	1	4	6	9	3	5	2	8
3	6	3	2	5	8	1	4	7
7	8	5	2	6	9	3	6	9

L. A. 2022 February Sudoku Solution

Polygon Puzzle: **WONDERFUL** Master word is

Write 300ish words on any subject - then send it to the editor

PHENOLOGY - Among the Christmas post on our doormat was Nature's Calendar 2003, the recording form of the UK Phenology Network. Phenology is the study of organisms as affected by climate, using the dates of seasonal phenomena such as the opening of flowers or arrival of migrant birds, and has a long history.

In 570, the Abbot of Iona reported that Columba, the Celtic saint, knew the migration dates of birds so well that he detected a missing crane and nursed the exhausted bird for three days, after which "it returned across the sea to Ireland in a straight line of flight." In China and Japan festival dates were fixed by reference to the blossoming of cherry and peach trees, giving valuable data from the 8th century onwards.

Throughout Europe in the Middle Ages observers concentrated on naming and classifying species, but by the 18th century, with the rise of the scientific method, attention returned to observing phenomena. Individual records included the Redditch Weather Diary (1703), Robert Marsham's Indications of Spring (1736) and, later in the century, the diaries of Gilbert White and Daines Barrington.

In 1875 the Royal Meteorological Society established a national network of recorders who published annual reports until 1948. In 1998, Tim Sparks, a research biologist, revived the network and, in 2000, joined forces with the Woodland Trust to form the UK Phenology Network.

Over the last four years, the number of recorders has grown from 74 to 18,600 and is still growing. Members record their observations either in Nature's Calendar or online at naturescalendar.woodlandtrust.org.uk for subsequent computer analysis. The network may also be contacted at The Woodland Trust, Kempton Way, Grantham, Lincolnshire NG31 6LL. Our first entry this year was the solitary daffodil that appeared briefly after Christmas only to succumb to slugs on 1st January. (February 2003) © Steve Osborne



Write 300ish words on any subject - then send it to the editor

The Lyminge Newsletter

can be viewed online (and in colour) at www.lyminge.org.uk/newsletter/ and then clicking on the current issue. Back-issues can also be viewed via this route.

Laing Bennett

Independent estate & letting agents

Check out our Client Reviews on our Website

Your Local Team

We are a dedicated team who go the extra mile to help you move home with as little stress as possible.

From the very first contact, you will see that our team are highly professional and friendly. In addition to our expert property knowledge, we live where you live! We know the local area inside out, so ask us anything.

Call Laing Bennett on 01303 863393 for a **FREE** no obligation Market Appraisal



FREE Professional Photography and Property Floorplan



FREE Rightmove Premium listing



FREE Social Media Advertising Campaign

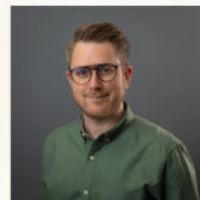


NO agency agreement tie in period - in other words we will NOT sign you up for a 20 week contract.

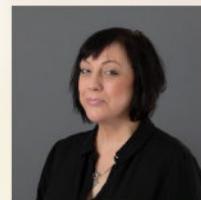
Sales Team

Lettings Team

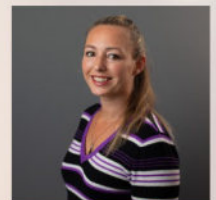
01303 863393



Bill Laing-Bennett
MNAEA - Sales Director



Rachel Boulden
ANAEA - Head of Sales



Jessica Mehdi
Sales Property Manager



Sharon Day
Sales Property Manager



Zoë Falers
Sales Negotiator



Katrina Howard
BA (Hons) - Sales Negotiator



Rob Laing
MARLA - Lettings Director



Julie Tyrrell
BA (Hons) - Lettings Property Manager



Ian Laing-Bennett
BSc Ed (Hons) - Operations & Financial Director

www.laingbennett.co.uk



Lyminge Pre-School



Lyminge Preschool provides quality Early Years education and day care all year round for children aged 2-5 years. The Pre-School is run by a team of qualified, highly experienced and dedicated practitioners.

Lyminge Pre-school has a safe, stimulating and fun environment that provides support and challenge for all of the children's individual needs. We welcome all children from the age of two from all surrounding areas.

To arrange to meet the team, please call 01303 863149 (day) or email lymingepreschool@gmail.com and visit our website www.lymingepreschool.org.uk

Etchinghill Baby & Toddler GROUP

10.15-11.30am every Wednesday
at Etchinghill Village Hall
£2.50 per child

We are excited to open Etchinghill's new parent and child group, welcoming babies and children up to the age of 2. Come and join us for a chat and a play. Call Chrissy on 07811682045 or Ruth on 07817777975 for further details or look at 'Etchinghill parent and child group' on Facebook.



Lyminge Baby and Toddler Group

Tuesdays 10am to 12pm
(term time only)

Tayne Centre, Church Road

Bring your little ones along to our friendly group for lots of fun including toys, crafts, playdough, ride ons and lots more.

£2.50 per family, including refreshments for all.



If you have any questions please contact Ellen on 07870 405567



Anna's Animal Physiotherapy
For dogs, cats & small pets

Anna Lindley
(RVN, Dip.A.Physio)

- Offering physiotherapy assessment and treatment of dogs, cats and small animals.
- I use a combination of manual therapy, laser, ultrasound therapy, TENS, kinesiology tape and exercises to rehabilitate your/their pet depending on the needs. I also address environmental and exercise factors that can help your pet with their condition.
- I now have a **NEW** treatment room where I can offer further assessment of your pet using a stance analyser. This identifies the mildest of lameness and addresses areas of compensation. I also offer home visits. Physiotherapy can help with arthritis and the ageing pet, post operative orthopaedic surgery, neurological, spinal conditions and many more conditions.
- I am fully insured with over 15 yrs experience working with animals. I am a member of the International Association of Animal Therapists (IAAT).
- For more information please visit my website: annasanimalphysio.co.uk or feel free to contact me on 07944 606453 or anna@annasanimalphysio.co.uk



BADGERS BRIDGE NURSERY

" Bridging the indoor and outdoor learning environment for children in their Early Years"



Badgers Bridge is set in the idyllic countryside of Postling, just outside Lyminge. We are a small and friendly Preschool who blend the Montessori principles with the outdoor learning ethos.

We were awarded Outstanding by Ofsted in 2018 in every area. This is a real achievement and we are really proud of the staff who work tirelessly to provide a stimulating and caring environment for the children of Badgers Bridge. The inspector was particularly impressed with our Forest School. *"Children enjoy limitless opportunities to explore, investigate and work together in the natural woodland environment. Staff skilfully inspire children to develop a significant understanding of the world in which they live".*

".....exemplary relationships between staff provide excellent role models for children and promote high standards of behaviour. Children make outstanding progress during their time at the nursery".

Exciting news! We have opened our new setting in Elham. We offer the same unique outdoor experiences for children from 20 months old. Come along and see us at The Gore!" So please call or email us:

Email : badgersbridge@gmail.co.uk

Website : www.badgersbridge.co.uk

Tel : 01303 862951

Postling Village Hall, The Street, Postling CT21 4EU

Ofsted Registered : 395128

Companies House Reg : OC375571

With our excellent local knowledge & experienced staff we will get you moving

- ✓ Free professional photography
- ✓ Free property floorplan
- ✓ Free Rightmove premium listing
- ✓ Free social media advertising

01303 863393

Laing Bennett
Independent estate & letting agents

Proudly serving Lyminge & The Elham Valley since 2009

The Estate Office, 8 Station Road, Lyminge, Kent CT18 8HP

Follow us on social media   

www.laingbennett.co.uk

Rhodes Minnis Cat Sanctuary



REHOMING & BOARDING CATTERY

- Our Sanctuary takes in and rehomes 250 unwanted cats and kittens each year. A variety of cats are always available to suitable homes.
- 5* Boarding Cattery under 2018 regulations
- We are open to visitors every day from 10-1 & 2-4. No appointment necessary.

T: 01303 862 243
E: rminniscats@gmail.com
Facebook: @rhodesminniscats
www.rhodesminnis.co.uk



Seathwaite, Green Lane, Rhodes Minnis, Kent. CT4 6XU
Reg. Charity No. 262245

Andy Mannering Flooring

SPECIALISING IN AMTICO AND KARNDEAN LUXURY VINYL TILES

- Also safety flooring, rubber flooring, etc.
- Commercial and domestic work undertaken
- No job too small
- Free estimates and advice given
- Over 35 years experience
- Fully insured



Telephone: 0797 434 7248 or 01303 863095

Email: info@andymanneringflooring.com

Please visit my website for further information and feedback
www.andymanneringflooring.com

Park House Sanctuary Boarding Kennels & Cattery

Park House, Stelling Minnis
CT4 6AN

Brick-Built Heated Kennels
Daily Walks ~ Reasonable
Rates Dogs must be fully
inoculated

Heated Cat Chalets
Quiet Area Inspection Invited.
To book or for further
information, call
01303 862622
or email
lord.whisky@btinternet.com
www.lordwhisky.co.uk

 **GEORGE MILLER**
PLUMBING AND HEATING

Formerly
 **matchams**
plumbing & heating

Gas & Oil Boiler
Service, Repair & Installation

New name, same
great service

 01303 277254
 service@georgemiller.co.uk
 248 Cheriton Road,
Folkestone, CT19 4DN

   
 georgemiller.co.uk


DAVID HAIME
ARCHITECTURAL TECHNOLOGIST
BUILDING TECHNICAL DESIGN
AND CONSTRUCTION DRAWING
SERVICES.
PROJECT MANAGEMENT

BUILDING PLANS FROM PORCH TO NEW BUILD.
PLANNING/BUILDING CONTROL/STRUCTURAL CALCS.
COVERING KENT/SUSSEX/SURREY.

LYMINGE, KENT CT18 8HA
TEL: +44 7974 156510
EMAIL: DHAIME@BTINTERNET.COM

SNIPPERS & CLIPPERS UNISEX HAIR SALON

-  APPOINTMENT NOT ALWAYS NEEDED
-  WEDDINGS & SPECIAL OCCASIONS
-  SHELLAC NAILS
-  FREE WIFI
-  GENTS WELCOME

 4 Station Road, Lyminge
Folkestone
Kent, CT18 8HP

 01303 647 222

 info@snippersandclippers.co.uk



Find us on
Google+

Find us on:
facebook

 **Tamsin Steel Art**
PET & WILDLIFE ARTIST



Beautifully detailed, realistic portraits, turning your photographs into beautiful pieces of art.

A special gift for yourself, family and friends.

www.tamsinsteelart.com
email: tamsinsteelart@gmail.com

The Lyminge Association

We're here to support and develop our community!!

Contacts:

Chair: Nancy Benham 01303 863076 or 07840796383
nancybenham@aol.com

Vice Chair: Peter Barnes 01303 863737 or 07808775302
pb@pbarnes20.plus.com

Treasurer: Janet Fry 01303 863177
janet@rhodesminnis.org.uk

Committee Members: Adrian Willcox, Marian Chubb, Richard Chubb, Dave Hunt-Cooke, Gillian Heywood, Derek Smith, Ray Smith, Penny Stephens

Newsletter: As for Peter Barnes above

ETCHINGHILL VILLAGE HALL HIRE FEES

The next time you are thinking of holding a function why not try Etchinghill Village Hall, which holds the highest Hallmark accreditation level (Hallmark 3), with its excellent facilities, including ample parking space.

The standard hire charge for the main hall and kitchen are:

ANY DAY OF THE WEEK' ANY TIME £12 PER HOUR

No winter supplements. No extra charges.

Ideal for family parties and get togethers.

The use of a separate Committee Room is also available.
For all bookings or enquiries please contact:

The Duty Manager on 07514 758936

bus times

for buses from Lyminge **The Sidings** to
Folkestone town centre via Etchinghill & Cheriton High Street

MONDAYS TO SATURDAYS except Bank Holidays

There are route 17 buses at 0705 (not Saturdays), 0749, 0909, 0934 (not Saturdays), 1004, 1034, 1104, 1204, 1304, 1404, 1514, 1614, 1619 (schooldays only), 1654 (schooldays only), 1719, 1749, 1834, 1929, 2113 and 2313.

There are also route 18 buses to Sandling Station & Hythe - for times see our website or call the number below.

SUNDAYS & BANK HOLIDAYS

There are route 17 buses at 1032, 1302, 1532 and 1802.

for buses from Lyminge **Wesley Terrace** to
Canterbury city centre via Elham, Barham & Bridge

MONDAYS TO SATURDAYS except Bank Holidays

There are route 17 buses at 0727 (schooldays only), 0732, 0752, 0903, 0938, 1028, 1128, 1235 (1228 on Saturdays), 1335, 1443, 1608 (1613 on Saturdays), 1703, 1803, 2001 and 2201.

There are also route 18 buses to Canterbury via Stelling Minnis and Bossingham - for times see our website or call the number below.

SUNDAYS & BANK HOLIDAYS

There are route 17 buses at 0903, 1133, 1403, and 1633.

These bus times will operate from 28 October 2018.



On mobile • Online • On board

03456 00 22 99 @StagecoachSE
southeast.enquiries@stagecoachbus.com
stagecoachbus.com

Editor: pbarnes20@icloud.com



Large hall with stage, new kitchen and flexible hire

Excellent parking facilities, disabled access, proximity to playgrounds and playing fields. Beautiful countryside location.

Capacity:

200 people dancing/audience seating, 100 with tables

Small rooms available for up to 50 seated

Find out how we can help you with your next event:

BOOK ONLINE: lymingevillagehall.org.uk

EMAIL: admin@lymingevillagehall.org.uk

INFO: 07525 909185

Guideline prices

MAIN HALL + KITCHEN HIRE: FROM £50

SMALL ROOM HIRE: FROM £20

EXCLUSIVE ALL HALL/ALL WEEKEND ~ £320

Find us on Facebook Registered charity 28145

Rhodes Minnis Village Hall

Charity No.800345

Rhodes Minnis Village Hall is located 2kms (1¼miles) from Lyminge and just off Longage Hill and Whitehorse Lane in Chapel Lane

The hall, which holds Hallmark accreditation, is ideal for children's parties, band practice, quizzes, meetings, wedding receptions, fundraising events and much more. It has a fully equipped kitchen.

Rates

Mon to Fri £18 per session £48 all day

Sat & Sun £23 per session

£33 for evening session and £69 all day

Sessions

AM session 08.30 - 12.30

PM session 13.30 - 17.30

Evening session 18.00 - 23.45

Separate rates for Bank Holidays and New Year and special rates for regular users.

For all bookings and enquiries please contact:

Mick & Dorothy Athow 01303 862616 e-mail: mick@athow.co.uk

TAYNE CENTRE HALL HIRE

Previously known as the Lyminge Methodist Church Hall

Clayson Hall

£10 per hour all year **with** heating

£8 per hour all year **without** heating

Rigden Room (Parlour) with heating, if required*

£8 per hour all year (*electric - over heaters).

For any enquiries please call **07716 521 405**



Lyminge Library Opening Times

Monday 10am - 2pm

Tuesday 12noon - 5pm

Wednesday 10am - 2pm

Thursday 10am - 5pm

Friday 10am - 2pm

Saturday 9am - 1pm

Tel: 03000413131 lymingelibrary@kent.gov.uk

D.M.B. Plastering

All aspects undertaken
*Interior. Exterior. Plastering. Rendering.
Coving. Ceilings. Wall. Floors
Finest quality assured. CSCS Certified.*
30 years experience.

Free estimates. Reliable service. Fully insured.
Call **David** on **07818 607209**



Need to talk?
Confidential and compassionate
qualified counsellor here to listen.
Please call or text Natasha on 07593 794321
All messages replied to
Email: forestlodgetherapy@gmail.com
www.forestlodgecounselling.com

B.M. Plumbing & Maintenance Services

Local Lyminge Tradesman

Plumbing and heating works. Complete bathroom
install including tiling. General building maintenance
undertaken. No job too big. No job too small.

Cheaper rates for senior citizens



07890854128 Benmillsplumbing@hotmail.co.uk

FILEHURST ASSOCIATES

YOUR COMPLETE REMOVALS AND STORAGE SOLUTION

01303 239990

info@filehurst.co.uk

Domestic & Business Removals - UK wide & France
Business Document Storage

Call Nick for a no-obligation quote

Wilco Plumbing & Heating

Central Heating Installations & Repairs
Gas & Oil Boiler repairs & replacements
5 Year Guarantee on Worcester Bosch Boilers.
Local Experienced Engineer, Emergency plumbing 24/7 call out
Registered with the Institute of Plumbing
Gas Safe Registered-OFTEC Registered

01303 862173 07860 452640

paul@wilcoplumbing.co.uk www.wilcoplumbing.co.uk

JON DAUGHTERS - Local Builder

All aspects of general building works undertaken including:
roofing, kitchens, bathrooms and small extensions

Trading for over 30 years

Free quotes, no obligations, fully insured

Telephone: 01303 863371

Email: daughters777@hotmail.co.uk

House Clearance covering South East Kent.....and beyond!

CAROL CREES CLEARANCES



- Est. over 30 years
Full/part house clearance
Fair prices paid
Antique/Vintage/Retro/Modern
Registered rubbish carrier

Contact **Simon Cullen** on **07745 421680** or **sijnzo@aol.com**



www.eastkentfootcare.co.uk

07745 532075

**Podiatry, Chiropody,
Foot Health**

Treating and managing foot
and nail conditions, corns,
callus, insoles, ingrown nails,
diabetic foot care



Total garden care for all your needs

TIM MILLETT

Grass Maintenance, General Gardening, Small & Medium
Size Tree Work, Stump Grinding and Wood chipping
Fencing Repairs & New Installations
Turfing, Hard & Soft Landscaping

Free Estimates - Fully Insured

01303 863676

07752 880583

Email: **info@tmhorticulture.co.uk**

THE BIG LITTLE BATHROOM COMPANY



COMPLETE BATHROOM SUITES • BESPOKE CAST IRON RADIATORS
TAPS • SHOWERS • TILES • ACCESSORIES • TEA & COFFEE

CANTERBURY ROAD, ETCHINGHILL, KENT CT18 8BS

sales@theblbc.co.uk • 01303 864349 • www.theblbc.co.uk

N.P.C.

Domestic Appliance Services

Service and repair of washing machines, tumble driers,
dishwashers, cleaners and small electrical work.

For a prompt and friendly service

Call Neil Collard 01303 892234 or 07798716044
or Google me on Yell.com

Auto Economy Centre

Fully equipped Mechanical Repair & Service Centre

With the latest diagnostic equipment

Half price MOTs when booked with any service

01303 863656

Orchard Garage, Canterbury Rd, Etchinghill

www.autoeconomycentre.com

To advertise in this space, please contact

Peter Barnes

pbarnes20@icloud.com 01303863737 07808775302

AIR LINK CARS

(You pack up, we pick up)

Airport, Seaport & Long Distance Travel Specialists.
The Family Run Business where service really counts
Estate cars and People Carriers



Fixed price 24hrs a day. No extras.
Written Confirmation of booking.
For the Easy Airport Link, Think AIR LINK!
01303 670370 - 07766 824 474
airlinkcars@yahoo.com



Dennis Huntley
Chimney Sweep



Wood burners and multifuel stoves installed
Hearths and fireplaces built & installed
Over 40 years' experience

01303 862 343 • 07850 784 365

dennis.huntley@talktalk.net www.dennishuntley.co.uk



PODIATRY/CHIROPODY - LYLE-ISABELLE ARNOLD

MCPod, B.Sc Pod, ACC

For the diagnosis and treatment of and including the following:

- Diabetic Care
- The permanent surgical removal of ingrowing toenails
- Orthotic correction of biomechanical issues
- Painful joint or soft tissue issues
- Routine treatment of corns, callouses and nails
- Verrucae

Patients seen by appointment only – 01303 863359



Sunhouse Electrical

Your local reliable Electrician
Part P Registered & Elecsa Approved
On Electrical Safety Register & Fully Insured
For a free quotation call James on

01303 766333

www.sunhouse-electrical.com

Gosbee
LANDSCAPES

FENCING | GATES | PAVING | RESIN BONDING
• Over 35 years experience • Jacksons Approved Installer
• Marshalls approved • Check-a-trade registered

Call Martin Gosbee: 07974 835 511 | 01303 863 337

GOSBEECONSTRUCTION@GMAIL.COM
GOSBEE.CO.UK



To advertise in this space, please contact

Peter Barnes

pbarnes20@icloud.com

01303863737

07808775302



MANOR
VETERINARY CLINIC

We care for them all, great and small

Due to the current situation our Lyminge and Capel branches are temporarily closed. For enquiries, please contact our Folkestone practice

Please call to book an appointment - 01303 273203

www.manorveterinaryclinic.co.uk

HANDYMAN
SERVICES
SJW

www.Facebook.com/sjwoodhandyman
www.Instagram.com/sjw.handymanservices
07796 384857

SPRINGRISE
CANINE CARE SERVICES

Dog walking, pet and smallholding sitting, dog day care, dog accommodation & dog playground and so much more...!!

Free (no obligation) consultation.
CV & references available.
Fully insured and security screened.

Mobile: 07582407637 Email: susannahparkin@googlemail.com
Website: caninecare.thespringrise.co.uk



AK Healthcare

Tel: 07904311554 /
07980897382

www.akhealthcare.org.uk

We help patients suffering from a wide variety of conditions including arthritic pain, circulatory problems, frozen shoulder, back pain, sciatica and much more.

Please visit our website or give us a call for more information.

AK Healthcare,
Garden Suite,
4 Station Road, Lyminge

LYMINGE FOOD & WINE
01303 862225



PayPoint

Our new opening times are:
Mon – Sat 7:00-20:00
Sunday & Bank Holidays
8:00 – 20:00

POST OFFICE



We offer National Lottery, ATM terminal, Post Office & PayPoint services.

South East Aerial & Satellite Solutions

Digital – Freeview – Satellite – Aerials

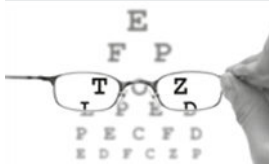
Supply and fit of quality digital installations, FREEVIEW, SKY, aerials, poor reception and problem solving, upgrades and repairs by fully accredited engineers

Free quotations and advice, fixed prices, fully insured

Freeview

NO CALL-OUT CHARGE
07825 168010 - 01303 862361

freesat



HOME VISITING OPTOMETRIST - providing professional eye care in your home

If you are over 60 years of age and no longer able to get out on your own, then you are eligible for a NHS sight test in your own home. Please call to arrange an appointment:

Elaine Edwards BSc(Hons)MCOptom 01303 840541

Registered with the General Optical Council (01-15421) Member of the College of Optometrists Member of the Association of Optometrists

Financial Planning

David Gridley - Chartered Financial Planner

Range of quality advice from a fully qualified adviser:

- Pre- and Post-Retirement Planning
- Investment Planning
- Inheritance Tax Planning

For further information, please contact our Lyminge office

David Gridley FPFs

Tel: 01303 863959 Email: davidgridley@sjpp.co.uk

OIL BOILER SERVICE

Professional Friendly Service. Prompt Response to Breakdown Calls. Over 40 Years Experience.

For Routine servicing, emergency breakdown calls and commissioning, contact:

P & V QUENBY LTD (Est 1987)

01227 760428

www.oilboilerskent.co.uk

MWH

Window and gutter cleaning service

Mark Haley

Lyminge and surrounding areas

For a free no obligation quote, please contact me

Mobile: 07738 479202

Home: 01303 863 702 Email: haleymark161@gmail.com

Find us also on Facebook



T. Metcalfe Fencing Contractors

Approved Expert Installer for Jacksons Fencing

Established over 30 years

Fully insured - Highly experienced teams



Panel fencing, gates, decking, pergolas, post & rail, stock fencing, security, landscaping & tree surgery.

01303 840201 07790 290 155

metcalfefencing@btinternet.com

Proprietor - Derek Burr,
Ash Ridge House, Elham



Lou Lloyd Carpenter

loulloyd@rocketmail.com

07984 426214

Kitchens, Flooring, Wardrobes,
Doors, Decking and more!

Fincham Plumbing & Heating

Over 30 years experience. Gas Safe, CIPHE, WIAPS registered
Lyminge residents

Rosemary and Martin Fincham
07835 851 706

For your bathroom installations from start to finish,
tiling, plumbing, gas, heating, radiators, boiler servicing

KSL Maintenance

New Builds and Repair

Timber Sheds, Carport, Garage extension, Shelter,
Decking, Agri / Equestrian or Household Fencing and
Gates. Steel Fabrication and Mig Welding projects

Text/call: 07805 773251

Email: kevin.leppard@gmail.com

Will respond within 24Hrs. Based in Rhodes Minnis.

HAND MADE CURTAINS, ROMAN BLINDS & SOFT FURNISHING

CURTAIN ALTERATIONS

TEL: VALERY WREN 01303 237755



D & S DOUBLE GLAZING SERVICES

01303 863689 - 07912317915

We are a local company that specialise in double glazing repairs offering a wide range of services that include: Replacement double glazed units - Locks - Hinges - Handles - Rubber Seals - Gaskets.

For a free estimate please call: 07912317915 or 01303 863689
or email: doublesglazingservices@gmail.com



CEDAR TREE CARE

All types of tree work undertaken

Crown lifting, crown reductions,

dismantling and removals, hedge maintenance,

pollarding, stump grinding and removal, mobile saw milling,
wood land maintenance, all year round seasoned logs available

Fully insured and NPTC qualified with over 15 years experience

Call Tom: 07769 908027 email: linchlot5@gmail.com

City & Guilds
NPTC

SPEARPOINT TREE SERVICES

All Aspects of Tree
Work Undertaken
NPTC Qualified
Fully Insured
Please call **Shane** for
a Free Quote
07963 203564 or
01303 621992



Sarah de Rougemont

Craftsman/Co-ordinator

UPHOLSTERY

All commissions considered
01227 455841 or 07973 377817

To advertise in this space, please contact

Peter Barnes : pbarnes20@icloud.com : 01303863737 : 07808775302



T. M. GRIGGS



01303 489795 07854 098395
tobystreesurgery@gmail.com

**Garden Clearance - Turfing - Hedge Cutting
Tree Work - Stump Grinding - Fence Repair**



APX PROJECT
MANAGEMENT

From design to build, we use trusted quality trade professionals along with reliable suppliers to ensure budgets are met, with high standards maintained. If you're looking to -

- Extend you property
- Carry out an external or internal refurbishment
- Convert an existing building into a new dwelling

Please contact: paul@apxprojectmanagement.co.uk 07487 364155

FRESHLOOK GARDENS

Regular lawn mowing service. Garden design. Hard and soft landscaping. General garden work, fencing and decking. Turfing hedge cutting, small and medium tree work. Water features, ponds and patios.

For free quotation ring **Danny Scott**
01303 242140 or **07795510093**
mrdanscott89@gmail.com

Established since 1990. Fully insured.

To advertise in this space, please contact

Peter Barnes

pbarnes20@icloud.com

01303863737

07808775302

Computer Repairs

01303 241325
07968 129902

PCs, MACs, Laptops, Tablets & printers,
Upgrades & Repairs, Internet & Email, virus removal,
Office Setup, Backup & Recovery & much more ...
Tuition available by a qualified tutor.

Usual Fee **£55**

Web sites built & hosted from £10 per month

See **www.computers-in-lyminge.co.uk** for details



Local Tradesman

J Tappenden

Established 36 years



Painter/Decorator

01303 862467

077755 78008



Alan Croucher
Caravan Engineer

07921 480919 - 01303 863194

Caravans & Motorhomes "WE COME TO YOU"

www.arcmobilecaravanservices.com

"Your manufacturer's warranty is safe in our hands"



Jackson Plumbing Property Maintenance

*Complete bathrooms and tiling
No job too small. Special rates for OAP's.*

**Telephone: home/evening 01303 270691
or daytime 07773 089398 or 07864 929826**

A. J. Athow

**BUILDER & DECORATOR
GENERAL MAINTENANCE**

Telephone: 01303 862616

Mobile: 07541 792238

Email: **tony@athow.co.uk**



Ralph Allard
Chimney Sweep



All chimneys, boilers and stoves swept.

Brush and Vacuum. Certificates issued.

HETAS and NACS registered, fully insured.

Member of National Association of Chimney Sweeps

01303 844465 or 07813716654

Trevor Law

Electrical Installations

Serving Elham Valley for 30 years
Part P Registered

01303 862348

07850 970087



J. V. Services

Servicing and Repairs: Serve/Repair/Full Restoration:

- Garden Machinery
- Ride on Mowers
- Trailers & Horseboxes
- Quad Bikes
- Classic Cars

(Free collection and delivery)

- Compact Tractors
- Vintage Tractors
- Classic Tractors

Mobile: 078 0300 3047

john@jvserviceskent.com



JBS BUILDERS

Specialising in Driveways, Brickwork, Patios, Fencing, Landscape Gardening. Tree work undertaken (lopping, felling and clearing).

General household repairs, painting, plastering, power jetting & cleaning.

No job too small!! All work guaranteed and insured.

For free advice and quotations please call: 07825 168010/ 01303862361 (anytime)





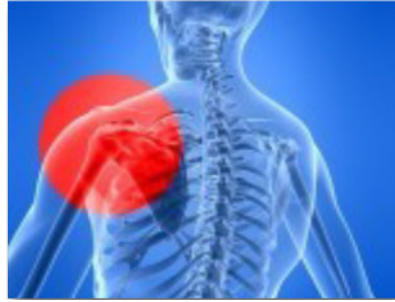
Snippers and Clippers Barbers - Lyminge

Opening hours
Please call Richard (07522494969) for current availability. Days and times may vary this month.

4 Station Road, Lyminge CT18 8HP

Follow us on **facebook** for offers

Amy Mills - Sports Massage Therapist



Sports massage is not only beneficial form of physical therapy for active sports people, but also for those seeking relief from muscle tension brought on by daily life

- * Pain management
- * General injuries and muscle soreness
- * Training recovery
- * Improve performance
- * Flexibility
- * Tension / Stress / Relaxation

07908472262 millsya87@gmail.com
www.consciouscreations.biz



DILTON MINI SKIP HIRE

Ballast, Hardcore, Sand and Topsoil Supplied
REGISTERED WASTE CARRIER

01303 812448 or 07799 433754

Red Dragon I.T. Ltd.



- Windows, Mac & Linux Systems
- PC Health Checks
- Wired & Wireless Networks
- Website Design
- Graphic Design

T: 01303 723456 | E: info@rdit.co.uk | www.rdit.co.uk
The Old Granary, Hanover Mill, Church Rd, Mersham, TN25 6NU



'Helping you enjoy your garden'

CRT Gardening

All general garden work undertaken including: garden design, hard and soft landscaping, new fencing installation and repairs, decking installation, hedge trimming and cutting, fruit and vegetable garden work, small to medium tree work. For a free quotation call either Karl Dodd 07967 442518 Katie Dodd 07966 301978 or email karl.dodd@live.co.uk katie.dodd@live.co.uk

Fully Insured



Hawkinge

Veterinary Surgery

Independently owned veterinary surgery for all types of small animals.
Opening hours: Monday to Friday 08:00-19:00 Saturday 08:30-13:00
24hour emergency service

TEL: 01303 764190

Hawkinge Veterinary Surgery, 9b Defiant Close, Hawkinge CT18 7SU
www.hawkingevetsurgery.co.uk



ROBERT KENT Cert.frp
FUNERAL DIRECTOR

Direct Cremation

£999

Fair Priced Cremation

£1950

ONE FIXED PRICE INCLUDING ALL CREMATION FEES

01303 684062

RKFUNERALS.COM

SCRUBBERS - Est. 1988

THE HOME AND COMMERCIAL CLEANERS

One off, regular or moving day 'Blitz'

Oven cleaning - Ironing

Carpet cleaning and more...

For a friendly and reliable service

Free Estimates

Tel: 01303 249288 or 07834 128671

Computer support & repairs by local people

Customer service is our priority

- *Remote IT support for business or home
- *New & refurbished sales
- *Call-outs for business or domestic users
- *Preventative maintenance & upgrades
- *Repairs to most phones, tablets & devices

enquiries@thecomputerpeopleltd.co.uk



Church Approach,
New Romney,
TN28 8AS
01797 363385



Acrise Electrical Services Limited

Design - Install - Maintain

Tel: 01303 656007 Mob: 07803 421240

Email: info@acrise-electrical.co.uk

Website: acrise-electrical.co.uk

Domestic, commercial, industrial & agricultural electricians serving the Elham Valley and surroundings.

Tressenden Designs

A seamstress and costume maker with 8 years of experience.

- ♦ Clothing alterations ♦ Repair work undertaken ♦ Made-to-measure; create a bespoke piece for those special occasions
- ♦ Modern and vintage designs ♦ Costumes, ball gowns and wedding dresses

For more information or a quote please contact Amy on: Mobile: 07853 202304 Email: amy.louise.ford@hotmail.co.uk



Out & About.

Do you have any photos of local events or groups in action? If so can you please forward them along with a few words to pbarnes20@icloud.com



Etchinghill Christmas Tree Lights and Carol Singing had to be relocated into the village hall. The villagers were entertained and accompanied by Shepway Brass Academy.



Photo taken by Susan Carey

LOCAL PHOTOS FROM CHRISTMAS 2021



A Nativity Scene with a Difference

The adult-acted nativity scene took place in a barn at Postling. It included real animals with sheep, donkey, horse, a real baby and a Mary who sang the words of praise recorded in the Bible. The local verdict ... ***"It was absolutely brilliant!"***

Christmas Lights in Mount Pleasant

which raised £5600



Out & About.

Do you have any photos of local events or groups in action? If so, can you please forward them along with a few words to pbarnes20@icloud.com



SPRING IS ON ITS WAY

The first sighting of snowdrops in the village (18 January)



Ethelburga Quilters made over 100 heart-shaped cushions which were delivered to the Breast Care Unit at Kent and Canterbury Hospital where they will be given to patients who will be undergoing breast surgery.

The New and Repositioned Notice Boards in the Village Car Park by the Library

(see P14 for further details on content, etc.)

