



THE LYMINGE NEWSLETTER

For the communities of LYMINGE, ETCHINGHILL, RHODES MINNIS & POSTLING
<http://www.lyminge.org.uk/>

July 2009

Produced by
THE LYMINGE ASSOCIATION

LYMINGE ASSOCIATION NEWS

Photo competition - Don't forget that the deadline is 31st July 2009. Entry Forms available at Lyminge Hardware

Photo evening at our AGM at Lyminge Village Hall at 7.30 on 17th September 2009 – come along to see all the photo competition entries.

Get involved – do you like?.... walking... and helping to produce a leaflet; **advertising and publicity...** to help with our designs; **Christmas...** and assisting the Lyminge Christmas lights switch-on; **organising...** join us at our AGM or at our meeting on 28th September – contact Mike on **862073**

Newsletter deliverers – we are still looking for a couple more volunteers either to deliver to your locality or to act as a deliverer of bundles to a collection of these volunteers – contact Mike on 862073

Publicise your local events – leave a message for Gillian on 863232

To organisations – Please let our Editor – Jean Howard, know about any changes (such as a new Treasurer) if you wish our invoice for your organisation to be sent – jean.howard1@talktalk.net

To advertisers – Please note that money must accompany adverts when placed in Lyminge newsagents or Lyminge Library. If advert is emailed please put money or cheque in an envelope and write which advert it applies to on the outside. The Editor has had two anonymous payments this month.

THIS MONTH'S SPONSOR OF THE NEWSLETTER . . .

Telephone
01303 862007

High Street
Lyminge
Kent
CT18 8EL

Major Credit Cards/
Debit Cards
accepted

New
Lyminge

Chinese & Fish and Chips
to Take Away

Established 1990

Opening Hours

Mon 5.00pm - 10.30pm

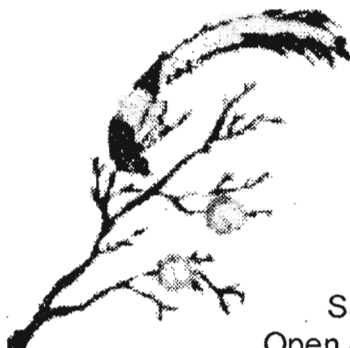
Tues & Sun CLOSED All Day

Wed & Thurs 5.00 - 10.30pm

Fri 5.00 - 11.00pm

Sat 12midday - 2pm & 5pm - 11pm

Open All Bank Holidays 5pm - 10.30pm



LYMINGE PARISH CHURCH SERVICES

Wednesday 1st July	7.00pm Holy Communion (short said) 7.30pm Open House (Bible study) 9.15pm Wednesday Silence (quiet prayer until 10.00pm)
Sunday 5th July	8.00am Holy Communion 10.30am WOW (World of Worship)
Wednesday 8 th July	7.00pm Holy Communion (short said) 7.30pm Open House (Bible study) 9.15pm Wednesday Silence (quiet prayer until 10.00pm)
Sunday 12th July	10.30am Holy Communion
Wednesday 15 th July	No Holy Communion Service 7.30pm Open House (Bible study) No time of silence & quiet prayer
Sunday 19th July	10.30am Family Communion 6.30pm Evensong
Wednesday 22nd July	7.00pm Holy Communion (short said) 7.30pm Open House (Bible study) 9.15pm Wednesday Silence (quiet prayer until 10.00pm)
Sunday 26th July	8.00am Holy Communion 10.30am Holy Communion
Wednesday 29th July	7.00pm Holy Communion (short said) 7.30pm Open House (Bible study) 9.15pm Wednesday Silence (quiet prayer until 10.00pm)

Sunday Afternoon Tea - Nailbourne Court – 5th July

These teas are held on the first Sunday of the month in the lounge from 3 - 5pm. If you would like to come but need a lift, please ring Vanessa at the Rectory

Mothers Union – 8th July

The Mothers Union will meet at 12.00noon outside the Methodist Church for a luncheon trip to Little Northleigh Farm. There will be a 'bring & buy' stall to raise funds for AFIA

Pram Service – 9th July

A short friendly service for pre-school children, followed by refreshments, which is held on the second Thursday of each month at 2pm in Lyminge Parish Church. The service will finish in plenty of time to collect older children from school.

Coffee morning - Wentworth Close – 13th July

Coffee mornings are held on the second Monday of each month from 10.00am to 11.30am in the lounge. Do join us as we meet with the residents of Wentworth Close for coffee and a chat.

Bereavement Support Lunch – 16th July

These lunches are held on the 3rd Thursday of each month at 12.30pm in the Coach and Horses. The meal comprises two courses followed by coffee, at a cost of £6.50 per head. All welcome. Transport can be arranged for those who need it.

Please let Vanessa know if you would like to book a place.

Family Communion Service – Sunday 19th July – 10:30am

We are really pleased that Stephen Ridgewell, a Christian magician is coming to take part in the Family Communion Service this month. Do come along and find out more!

We look forward to seeing you at this service. Afterwards please join us for the Parish picnic on Jubilee Field. Bring your own food and drink and enjoy an afternoon of games and fun for all the family

LYMINGE METHODIST CHURCH

Visitors are very welcome to join us at our weekly Service at **11am** and invited to share fellowship afterwards with a cup of tea/coffee

Preachers for July are:

5th July 9.30am United Valley Service
Rhodes Minnis. No service at Lyminge

12th July 10.45 for 11am Café Church
Mrs Val Redding

19th July **Mr David foreman**

26th July **Rev Barry Armson (incl Holy Communion)**

2nd August **United Valley Service**
Mr Terry Preston

Wed 29th July 7.30 – 8.30pm

"Reflections" – alternative, less formal worship
No Monday Fellowship during July & August

For Baptisms, Weddings or Funerals, please contact the Minister, Rev Barry Armson, on 01303 266281

Rhodes Minnis Church

This small Chapel in beautiful countryside surroundings holds a weekly Sunday Service normally at 9.30am

Followed by coffee and biscuits

A warm welcome is extended to any visitors

The Preachers for July are:

July 5th 9.30am -Congregations from both Lyminge and Elham
Methodists will be joining in a United Valley Service at Rhodes

Minnis led by Mr. David Foreman.

July 12 - Mr. Michael Dallin

July 19 - Mr. Peter Ellis (All-Age Worship)

July 26 - Rev. Barry Armson (incl Holy Communion)

Aug 2nd - **NO** service at Rhodes Minnis but a united Valley service at Lyminge Methodist at **11am**

POSTLING CHURCH

You will receive a very warm welcome in this little church set in the pretty village of Postling where a service is held every Sunday

5th July Evensong 6.30pm

12th July Family Communion 9.30am

19th July Holy Communion 8am

26th July Family Service 9.30am

8th August Summer Concert 7.30pm
Postling Church 863780 Peter

L.E.T. (Lyminge Ecumenical Team)

Prayer Box. Please place any prayer requests concerning a bereavement or illness in the prayer box at Lyminge Post Office. It would help to have the name of the person you are praying for but not necessarily your name. These will be included in Sunday worship in both churches and added to private prayer life.

Dates for your Diary

IMPORTANT NOTICE

Due to unforeseen circumstances
the planned Family Fun Day on July 11th is
Cancelled

We hope this will not disappoint families too
much and maybe it can be held at some future
date.

Village Hall Management Committee Reg Charity
281845 and Lyminge Pre School

Lympne Village Hall Summer Fayre Saturday, 11th July 1-4.30pm

Many craft stalls, Arena displays, Cream teas, beer
tent and refreshments, Face painting, charities,
childrens rides and bouncy castles. Come and enjoy
a traditional village fayre. Entry by small donation to
Village hall Fund.

Rhodes Minnis Cat Sanctuary

Registered Charity 262256

The Staff, Trustees & all the Cats invite you to their
Annual Open Day

at Seathwaite, Green Lane, Rhodes Minnis
(Between Lyminge & Stone St B2068)

Sunday 12th July 2009 - From 11am – 4.30pm

The Garden Party with all the Cats
Stalls with Cat related novelties and cards
Bric a Brac – Books & Videos – Home-made cakes &
Jams.

Large selection of plants all grown by our supporters
A huge Tombola with over 200 high value prizes
Reflexology – Tortoises – Photographic Comp. and a
chance to make a new feline friend.

Refreshments all day – Ample parking
Entry 50p Children 25p

All profits from the day go to support our work of
taking in & finding new homes for unwanted cats.

Garden Open Day

Saturday 18th July 2pm – 5pm

At Little Garth, Brady Road, Lyminge
£1 entrance fee, including The Lyminge Hand
Bells, Local Accordionist, Plant Sale, Garden
Theme Quizes, Tombola and of course Cream
Teas

~~~~~  
~~~~~

Evening Entertainment from 7pm

The Buckthorn Band, traditional folk music
£2 admission with a complimentary Hot Dog in
the interval. Evening raffle
Please feel free to bring own seating and evening
picnic

All proceeds to Leukaemia Research in memory
of Joy Betts

WINDMILL FETE

Mill Lane, Stelling Minnis

Saturday, 18th July - 12-5pm

Live Music with Jazz Omnibus
Morris Dancing
Hawkinge Flyers Twirling & Pompom Team

* New Attractions *

Canterbury Exotics

Fun Dog Show

CRAFTS * STALLS * SIDESHOWS *
DISPLAYS

RAFFLES & TOMBOLA

Shire Horses & Cart rides
Steam & Stationary Engines
Vintage agricultural vehicles & machinery
Classic Cars & Motorcycles (pre-booked only)
PLUS

Bar * Barbecue * Teas * Ice Creams
Windmill & Museum Open

Admission: £2. 11-16yrs: £1 Accompanied
Under 11's: Free]

For information, ring 01227 709238 (Fete)
01303 864202 (Dog Show only)

Can you spare an hour to help at the Fete or in
the Windmill & Museum? Please ring if you can
help. Thank you.

Cantores Dominicae invite you to a very special

30th Anniversary Concert on Saturday 18th July 2009 at 7.30pm

Performing:

The Haydn's Nelson Mass and
A Summer Medley of Choral Music

at The Methodist Chapel, Lyminge, Nr.
Folkestone, Kent

Musical Director: Stephen Yarrow

Tickets £6.00 contact 01304 813579/01233
503686 or 01233 813860

(tickets available on the night at the door)

STOP PRESS: Join us for our

Summer Workshop

Conducted by Mark Deller

On Wednesday 22nd July 2009, 7.30-9.30 p.m. at

Lyminge School, Tayne Field, Lyminge, Nr.
Folkestone, Kent

Contact as above for more information

Elham Farmers' Market

The Rose and Crown courtyard, High Street,
Elham

Next markets: Sunday 12 and 26 July
10.30 to 12.30

Fresh, seasonal, locally produced food
(vegetables and fruit, meat, game, eggs, fish,
cheese, bread and cakes, pies, and more).
Check on www.elhamfarmersmarket.co.uk for
future dates, list of traders, latest news and
recipe ideas.

Newington Village Hall

Registered Charity No. 3-2812

Beetle Drive

Friday 10th July

Starts 7.30pm

Admission £1.

Teas, Coffee and soft drinks available

**ST. MARY AND ST. ETHELBURGA CHURCH,
LYMINGE**

INVITE YOU TO:

FAMILY COMMUNION SERVICE - SUNDAY 19TH JULY - 10:30 am

We are really pleased that Stephen
Ridgewell, a Christian magician is coming to
take part in the Family Communion Service
this month.

Do come along to find out more!

Lyminge Gardeners Society

Tuesday 21st July

A visit to Sir Charles Jessel's garden

Be at the Library car park at 6.00pm or South Hill
Farm, Hastingleigh at 6.30pm

The charge for the evening will be £3.50 for
members and £4 for non-members.

This will include light refreshments

Beetle Drive

Saturday 25th July

Come along and join us at
Rhodes Minnis Village Hall

Start at 7pm
Adults £2.00 - Children 50p
Includes refreshments
There will be a raffle

In Aid of The Lord Whisky Sanctuary Fund

Registered Charity: 2843483

Park House, Stelling Minnis, Canterbury, Kent CT4 6AN

Tel: 01303 862622 Fax: 01303 863007

Email: lord.whisky@btinternet.com

Boot & Summer Fayre

Saturday 25th July, 12 noon – 3.30pm

Burt butler Jazz Pilgrims
Anthea Barnes School of Dancing
Hawkinge Flyers
Raffles ~ Tombolas ~ Refreshments
Car Boots £7.50 ~ Vans £10
Admission by donation

Boot & Autumn Fayre

Saturday 12 September

12 noon- 3.30pm

Don't forget to visit our Tea rooms & Gift Shop

Open every day from 10am – 4pm at Rhodes Minnis
Freshly cooked meals, friendly service and reasonable prices.
Hot & cold lunches and snacks. Delicious home-made cakes.
Fish & Chip Supper every Friday evening from 7.30pm
Take-away available. Phone 01303 862349

EAST KENT HUNT SUPPORTERS CLUB

ANNUAL TERRIER SHOW

&

FAMILY DOG SHOW

Sunday 26th July

Page Farm, Postling, Hythe CT21 4EZ

Judging commencing at 1pm
Ten Terrier Classes and Ten fun dog Show Classes &
fun Dog Clear Round Jumping
Refreshments, Car Park and Raffle
Further details – Mary Major on 01303 840236 or
camberlot@live.com

Rhodes Minnis Summer Flower Show

Saturday 1st August 2009
At Rhodes Minnis Village Hall
Open to view 2.30pm

If you wish to enter the show, schedules are now
available from
Daphne Andrews on 01303 862865

ROTARY CLUB OF HYTHE CHARITY BOOT FAIR

THE GREEN, HYTHE

7am to 2pm Sunday, 2nd August

£10 per Boot on arrival, all welcome

Forthcoming Village Events

We would like you to give us details of your future events for this page. This will help us all plan for our own events and help spread them throughout the year. There is no charge for entries on this page. For entries into future issues please phone **Gillian on 863232**.

One Off Events In Forthcoming Months		When and Where?	Contact Details	
1 Jul.	Rhodes Minnis Methodist Lunch	1:00 Rhodes Minnis Village Hall	862865	Daphne
4 Jul.	Hog Roast & Ho-down	Etchinghill Village Hall	863418	Keith
10 Jul	Royal British Legion Committee Mtg	St Mary's Hall Elham	864255	John
18 Jul	Cantores Concert	7:30 Lyminge Methodist Church	01233503686	Jenny
22 Jul	Cantores Summer Choral Workshop	7:30 Lyminge Primary School	01233503686	Jenny
26 Jul	East Kent Hunt Annual Dog Show	12:00 Page Farm Posling	840236	Mary
1-Aug	Summer Flower Show	Rhodes Minnis Village Hall	862865	Daphne
8 Aug	Summer Concert	7:30 Postling Church	863780	Peter
11 Sept	Royal British Legion Committee Mtg			
12 Sept.	Boot & Autumn Fayre	12:00 Lord Whisky, Park House	862622	Margaret
12 Sept	Proms in the Park	7:30 Lyminge Village Hall	862928	Honor
19Sept	Royal British Legion Annual Lunch	Lyminge Village Hall	864255	John
20 Sept	Garage Safari	9:00 Garages around the Village	863197	Liz
4 Oct.	Rhodes Minnis Harvest Festival	Rhodes Minnis Methodist Church	862865	Daphne
7 Oct.	Rhodes Minnis Methodist Harvest Lunch	1:00 Rhodes Minnis Village Hall	862865	Daphne
10 Oct	Quiz Night	7:00 Lyminge Village Hall	862928	Honor
28 Oct.	Rhodes Minnis Village Hall AGM	Rhodes Minnis Village Hall	862865	Daphne
28 Oct.	Rhodes Minnis Village Hall AGM	Rhodes Minnis Village Hall	862865	Daphne
5 Nov	Bonfire Night and Fireworks	6:30 Lyminge Village Hall	862928	Honor
7 Nov	Etchinghill Residents' Association AGM	Etchinghill Village Hall	862873	Barbara

Weekly Events Dates 2009		When and Where?	Contact Details	
Mondays	Etchinghill Open House	Etchinghill Village Hall	863418	Rosemary

Monthly Events Dates 2009		When and Where?	Contact Details	
1 st Tue.	Lyminge Historical Society	7:45 Lyminge Methodist Hall	840419	Derek
1 st Wed.	Lyminge Friends	10:00 Lyminge Methodist Parlour	862427	Mavis
3 rd Wed.	Rhodes Minnis Evening Circle	7:30 Rhodes Minnis Village Hall	862913	Marion
1 st Sat.	Farmers and Craft Market	10:00 Etchinghill Village Hall	862832	Bryan
4 th Sat. ¹	Beetle Drive	7:00 Rhodes Minnis Village Hall	862616	Mick
3 rd Sun. ²	Parish Walk	10:00 Lyminge P.O. Car Park	862015	Richard
3 rd Tue.	Etchinghill W. I. Meeting	2:30 Etchinghill Village Hall	862141	Dottie
Last Mon.	Parish Council Meeting	See Parish Notice inside Newsletter	862184	Pam

Copy deadline for next month's newsletter is the 18th of the month

Call Jean Howard on 01303 862488 or email in word doc. format to jean.howard1@talktalk.net. Money must be received before articles can appear in the newsletter. A paper copy and money can be left at the Lyminge Newsagents or the Lyminge Library. Charges are as follows: Business adverts - £8.00 per month or £80.00 per year (12 issues for the price of 10). Charity adverts - £1.50 per month or £15.00 per year (12 issues for the price of 10). Please make cheques payable to The Lyminge Association

¹ Beetle Drive will be held on 4th Sat., except in December when it will be held on the 2nd Sat. of the month.

² Parish Walk will start from Rhodes Minnis Village Hall on 13th September.

³ Boot Fairs on 11 July, 1 Aug, 29 Aug, 19 Sept, 3 Oct, 17 Oct.

Notices and Reports

Lyminge Historical Society

Tuesday 4th August 7.45pm
A visit to
Hawkinge Museum

Meet at Lyminge Methodist Church for those requiring transport There will be a small charge
Non-members welcomed

DEMELZA Hospice Care for Children

PAPER BOOK APPEAL

Demelza (Hythe Bookshop) is in urgent need of books – mainly paperback fiction.
Please contact Brian on 862696 or leave at 27 Station Road, Lyminge

Free Exhibition in aid of the Pilgrim's Hospices.

Following the success of our Exhibition of paintings and poetry last year, "Beyond Words", which raised £ 310.00 for the local Pilgrim's Hospices we are pleased to announce a second collection called "Words and Beyond"

We will be launching our second book and exhibiting the Paintings and Poetry in the Peggy Pike Room of Elham Village Hall on **22nd and 23rd August, from 10.00-4.00 p.m. each day.**

Prints and books will be for sale, and Presentations can be booked at this event. As before, all profits will go to the Pilgrim's Hospices.

Please come and support us in our work for this worthwhile cause.
Jane Phillips and Graham Blythe.

LYMINGE VILLAGE HALL

Proudly Presents

LAST NIGHT OF THE PROMS

12 September 2009

*Themed Night
American Supper
Bar
Games & Prizes*

*Put the date on your Calendar
More details next month*

Organised by the Village Hall Management
Committee Reg Charity 281845

COASTWATCH

National Coastwatch Stamp Appeal

The National Coastwatch are asking people to donate stamps and envelopes to their appeal. They are hoping to accumulate a million stamps. Appeal boxes can be found in Haxtons Estate Agents and the Lyminge Coffee Shop from where they will be collected.

If any local groups would like a talk on the work of Coastwatch please contact Mrs Barbara Pay on 01303 242904

Lyminge Dramatic Society - Babes in the Wood

November will be Panto time as the Society puts on an exciting new production of "Babes in the Wood". Written by Brian Edmond and to be directed by Matt Nixon, the pantomime will run from Tuesday 1st to Saturday 5th December and involves the usual mix of pantomime characters. We are looking to cast children and young people in the production, either as one of the two Babes or as village children. We are holding a special reading and casting session for children only at Sibton Park Cricket Club on 1st July at 5.00pm. If you cannot make this date, but your child is keen to be considered, please ring Tricia on 862008 or Catherine on 862602.

Adults will be most welcome to attend the main reading to cast the pantomime which will start at 7.45pm, also at Sibton Park Cricket Club on 1st July. There are lots of parts to be cast, so why not come along? Adults wishing to audition should ring Catherine on 862602 for a copy of the script.

Why not make a note of the performance dates in your diary for what promises to be a spectacular show.

LYMINGE FRIENDS

Wednesday 1st July 2009 - Speaker - Professor Martin Warren - Medical mysteries of a Mad King and a Sad Queen.

On 3rd July we are arranging a trip to see Bedroom Farce at the Tower Theatre and on 22nd July there will be a picnic on Tayne Field - all welcome.

Wednesday 5th August 2009 - Speaker - Judith Lansdell on Stained Glass.

On 19th August there will be a trip to Broadstairs.

Wednesday 2nd September 2009 - Speaker - Professor Vivian Moses - The pros and cons of genetically modified crops followed by lunch in Brockhill Park.

On 16th September there will be a trip to Rye.

Meetings are 10 am - 12 noon in the Methodist Church Parlour. Everyone welcome to come and join in. Entrance £1.50 inc. refreshments. For further details contact Marian on 862015

Etchinghill W.I.

Rita Warner welcomed members and guests to the June meeting. Etchinghill were congratulated for coming 3rd in the Top Team Quiz. Members enjoyed a Ploughman's' lunch at the Elham Valley Vineyards earlier this month. There is concern that the W.I. country markets have closed in many places due to the ageing population and there are not enough helpers to keep them open.

Birthday posies were presented to June Manton, Daphne Melrose and Eileen Lofty. Mr and Mrs Wagner then entertained us with Phantasmagoria Number 2.

Tea was served by the hostesses who were Gill le Cras, Pat Kent, Jean Tilley
Next meeting is on 21st July at 2.30pm. which is our Garden Party

Members are requested to wear a summer hat. The competition for the Jean Bilham cup is a corsage of fresh flowers

The summer outing is to Sissinghurst Castle Gardens on Tuesday 4th August.

For further details please contact Barbara Syrett on 265229 or Dottie Cross on 862141

Rhodes Minnis Evening Circle

Our speaker in June was Owen Leyshon who gave us a most interesting talk on the wildlife and history of Dungeness. The area is rich in wildlife and plants and is the largest shingle area in the world. As part of the Romney Marsh Countryside Project Owen educates the public and leads walking and cycling tours. The competition was won by Molly Walker with Pat Kent 2nd, Marie Hambrook 3rd and Daphne Andrews 4th. We meet again on the 15th of July at Rhodes Minnis Village Hall at 7.30pm when our speakers are Graham Blythe and Jane Phillips will be illustrating poetry. New members are especially welcome.
Marion Hoare - 01303 862913

Age Concern Lyminge

We are holding the final Annual General Meeting of Age Concern Elham Rural on Wednesday 22nd July 2009 at 3pm. If you would like to hear about our achievements over the past 12 months please come along. All are welcome.

We have organised some computer training for older people through the Training Highway. We will be hosting free taster sessions at the Centre on Thursday 23rd July. Sessions will run from 9.30am till 11am, 11.30am till 1pm and 2pm till 3.30pm. If you would like to attend please give us a call so that we can book you in.

We are hosting a number of activities here at the centre. On July 6th at 10.30am till 11.30am we will hold our monthly "Hale and Hearty Club". Sessions include techniques in relaxation, positive thinking, stimulating your mind and expressing your views.

On Wednesdays at 1.30pm till 2.30pm we host lip reading training which is run by Hi Kent. If you are hard of hearing and would like to learn to lip read please come along.

All of these activities are provided **FREE OF CHARGE.**

Our Information and Advice Officer, Mike Foxon is available to help check benefit entitlements and provide practical help to complete application forms for Attendance Allowance, Pension Credit, Disability Living Allowance, Carers Allowance, Council Tax and Housing benefits. Please contact Mike on **01303 863861**, home visits can be arranged.

We have some availability for lunches within the centre. Lunch is served at mid day for £3.75. Please contact the centre if you wish to come in for lunch or use any services ask for **Lisa Hodden or Matthew Martin on 01303 862364 or just pop in to the Centre at Everist Court.**

Gentle Keep Fit Classes

For those with creaky joints or impaired mobility, who wish to improve their fitness, balance and stamina. Come along and see if this is for you. Your first class is free.

We are a friendly crowd and a lycra leotard is definitely not needed!
Methodist Church Hall, Lyminge on Wednesdays 10.15 am – 10.45 am

Contact Barbara on 01303 862873 for further information

2009 Archaeological Dig

As in previous years, there will be guided tours of the site on Sunday afternoons at 2pm starting July 12th which will take in both the excavations and the star finds made each week. For those interested, meet at the field above the Parish Church graveyard towards the old Rectory.

The dig itself will take place between July 6th and Aug 16th. Anyone who would like to volunteer help and have not already contacted Dr Thomas, contact him on site. The site will be worked Monday - Friday 9am-5.30pm and Sundays 10am-5pm.

Do not forget your diary date for Friday 14th August 2009 when Dr Thomas will give his "end of dig" talk to the village in the Methodist Church. The talk will cover the results of the analysis from the 2008 dig and a report on the dig and finds from this year. Once again, the talk is free of charge and open to everyone.

Finally, a copy of Dr Thomas's report on last year's dig is in the Lyminge Library. This is a reference copy and must remain in the library, however for those with internet access you can down-load your own free copy from the web at: www.reading.ac.uk/archaeology/research/projects/arch_lyminge.asp

Lyminge Bowls Club

There are not many home fixtures in July, but a warm welcome awaits you if you want to come along and watch. The dates are as follows:-

Thursday 2 July	People on a bowling holiday from Oxfordshire visit Lyminge
Friday 3 July	Ladies from New Romney play our ladies
Saturday 4 July	A team of men from New Romney come to play our men
Sunday 5 July	A team all the way from Thurrock visit us
Saturday 11 July	Webb Trophy – a club competition
Saturday 18 July	Captains Day- a very social club day

All games start at 2.30 pm. In addition, club members will be found playing on the green on Wednesday afternoons and Friday evenings. If you want to have a go, come along and ask. Call 863495 for further information.

Elham Valley and Wye Lions Club

The Railway Swing Band Concert held at Elham Village Hall was much enjoyed, and after expenses raised £942 which, after a donation to the band, will be donated to Macmillan Nurses and Pilgrims Hospice.

Thanks to those who supported our Easter egg raffles which have raised over £1,100. Thanks to all those who took part and to the local pubs who hosted them.

Please note our annual **Golf Day** will be held on **Friday, September 11th** at Sene Valley Golf Course. Details from 01303 862837.

Tuesday Stompers wish to thank Roseneath Ceramics for their sponsorship and to all of those who attended and supported their swing/blues evening on the 12th June. We raised £210 for Mission Aviation Fellowship. Thank you so much."

IRONING SERVICES

Going on Holiday? Returning from Holiday? Or just wanting a break? Why not let me take care of sorting out the ironing for you?

I don't charge per item or by weight. I charge by the hour so no matter how small or large your pile you always get a good deal!

Special Offer – Holiday one off jobs at same price as regular jobs

During June, July and August a one off 2 hr ironing session will be charge at the standard price of a regular job

For more details contact Tace Parrish on 01303 893887 or 97545864855 (or at tace.parrish@googlemail.com)

A tribute to Ross Butcher who is starting a new business in Lyminge

The many elderly folk in Lyminge are generally well catered for so we go on living for a long time. This is good but can be a very lonely time, especially if there are no family nearby. Our village has an answer to that. Ross Butcher has a very comfortable car and for a small fee he will transport you wherever you want to go, whether it is a trip to the shops or a whole day out. He is very willing and helpful and if you cannot manage to get to the shops he will take on that responsibility and deliver goods to your home. It has been a delight to be driven out to see the bluebells and perhaps stop for a coffee somewhere with a very kind and helpful gentleman.

This is an edited version of a very long letter sent to Mr Butcher (Ed)
Please see advert on business pages.

Lyminge Heritage Questions and Answers

First the May 2009 statistics from Hannah's weather station in Etchinghill.

Maximum Temp	24.5 °C (25/5/09)	Minimum Temp	4.2 °C (4/5/09)
Maximum Wind Speed	21.6 mph (17/5/09)	Max. Rainfall in 24 hours	9.3 mm [0.3 in]
	Beaufort Scale 5		(26/5/09)
	Fresh Breeze	Monthly Rainfall	35.2 mm [1.4 in].

The information about the public houses and inns in the locality prompted a lot of interest. Both Bobbie Sessions and Mike Athow came up with details about Flint Cottage which is at the crossroads in Rhodes Minnis. It seems that, this building was built as a pub but never opened as such because the owners could not get a license. Apparently, there were too many public houses in the locality. I understand that the cellar of Flint Cottage show clear features of the original intention.

Mike also has reminded me that the 'Prince of Wales' was known, latterly, as the 'Battle of Britain'. In addition, he told me about the White Horse which stood on the footpath that runs from Longage Hill to White Horse Lane. Old maps show that this footpath was a road in previous times. Mike remembers that the old pub sign hung in a tree in the field, for many years, having been placed there after the pub was pulled down sometime early in the twentieth century. It seems that the sign was lost when the tree was cut down. It is not surprising that Flint Cottage's owners could not get a license as there would have been three public houses in a very small area.

Helen Burr has told me about her research into the drinking establishments around Lyminge Parish Church. She said "I don't know if you've come across the little historical snippet about Thomas Duffyn [early 16th century Lyminge vicar] ... bequeathing £4 for the building of a place within the churchyard 'where it shall seem best to the parishioners, in which they, after an anniversary, or other times, may hold their drinkings'." So an ale house was built close to the church. Where this actually was is uncertain. Apparently, before this time 'drinkings' took place inside the church. It seems that the church hierarchy felt that this behaviour was inappropriate and Archbishop Wareham, in 1511, abolished drinking and other 'abuses' inside churches. Thomas Duffyn wrote his will in 1508 and it may be that Archbishop Wareham's opinions might have prompted Thomas' action.

Helen's investigations have also revealed a later public house. It appears that the Grocer's Arms, which I wrote of last time, was previously known as the 'Five Bells'. Helen has found that this pub was situated in what is now 'Well House' opposite the Parish Church. It seems that this pub turned into a grocer's shop and eventually in the twentieth century into a bakery. Like Flint Cottage, Well House has a cellar with features suggestive of use as a public house. Helen suggests that, although there is no evidence that this is the case, it might be that Thomas Duffyn's drinking place was situated at the same site as the later 'Five Bells'.

Helen has also discovered that in the nineteenth century the 'Five Bells' was owned by the Price family who were successively parish rectors. The second Ralph Price left the pub to his son in his will. Apparently the family had a brewery in the farm yard that stood in front of the rectory. Helen suggests that the beer produced by the brewery would have been sold at the 'Five Bells'

Finally we come to the pub's name. The fact that it was called the 'Five Bells' suggests that it was established prior to six bells being hung in the church belfry. It seems that the history of the present eight bells is as follows:

- Bell 1: Cast in 1904 by Mears & Stainbank
- Bell 2: Cast in 1904 by Mears & Stainbank
- Bell 3: Cast in 1904 by Mears & Stainbank
- Bell 4: Cast in 1631 by John Wilnar
- Bell 5: Cast in 1785 by William Mears
- Bell 6: Cast in 1727 by Samuel Knight
- Bell 7: Cast in 1785 by William Mears
- Bell 8: Cast in 1759 by Lester & Pack

(from <http://www.hibberts.co.uk/collect2/lyminge.htm> and <http://kent.lovesguide.com/lyminge.htm>)

There are records of five bells from 1552 to 1810 when a treble bell was added. This suggests that the 'Five Bells' was possibly established prior to 1810. Last time I suggested that the 'Grocers Arms' was a short lived public house. This now seems not to be the case. It quite possibly had a long history as the 'Five Bells'.

Alistair Bailey

(email: abailey447@aol.com tel: 864235)

ETCHINGHILL UPDATE

Village Hall - Open House

Hope you enjoyed the talk on the WW2 Enigma code machine in June as well as the visit to the Lord Whiskey Sanctuary for lunch? Don't forget the Hog Roast on the 4th July where friends, families and residents can enjoy an evening of music and dance in the garden of the hall from 7.00 pm onwards. Carving of the hog starts at 7.30 pm. Bring your own drinks. More information is displayed on the notice board at the hall entrance or details from Keith on 863418 and Rodney on 862028

Don't miss out! Come along any Monday at 10.00 am. As some of the forthcoming events will not be held on a Monday all information for ongoing activities will be on the notice boards in the hall and at the entrance to the car park or on our web site www.etchinghill.org

Here are some of the planned events and some events which have to be finalised - watch this space!

Summer Mondays - Weather permitting - A game of Petanque

Wednesday 12th August - Stelling Minnis Windmill, cream tea & tour of the windmill £4.00 per head. To book contact Rosemary on 863418

Monday 5th October - Inheritance tax

31st December - New Year's Eve Party

We have yet to finalise dates for the following :

Tour of Elham Valley Vineyard

A talk on the Palaces of Henry VIII

Table Fayre

Race Night

A visit to a Magistrates Court

Quiz Night

Village Hall - Farmers'/Craft Market/Car Boot Sale

We're adding a car boot sale to the farmers market for the next three months starting in August. Pre-booked spaces only so contact Anne on 863174 to reserve your spot (No commercial businesses) All the usual stalls for bread, cakes, pies, fish, meat, eggs, vegetables, cards, sweets, crafts, teas and coffee will be there. For details contact either Bryan on 862832 or Anne on 863174.

Etchinghill Residents' Association will be taking one of the spaces at the car boot sales. If you have any items of bric a brac, books or anything unwanted please contact Barbara on 862873 or Wendy on 863495. All proceeds go to the Christmas tree fund. Perhaps this is time to start clearing the loft or the garage!

DUKE OF EDINBURGH'S AWARD SCHEME

If you are aged 13 or over why not join this scheme? A group meets each Wednesday during term time at the Valley Leisure Centre from 7.0pm to 9.0 pm. Contact Norry Barber on norry.barber@kent.gov.uk for further details

THE BIG LUNCH

Sunday 19th July - What has your road organised for this event? See the website www.thebiglunch.com for full details about bringing your immediate community together, having lunch, meeting the neighbours and generally having a good time.

Dates not to be missed

Farmers/Craft Market 4th July. 10.00 - 12.30 pm

Farmers Market and car boot sale 1st August, 5th September, 3rd October 10.00 - 12.30 pm

Clerk Vacancy for Lyminge Parish Council

Do you have an interest in working with the Parish Community?

Do you have good communication and word processing skills?

Are you keen to receive full training and gain a Clerk's qualification?

Free to start part time training now?

Yes? Then this could be the job for you!

10-15hrs per week, £8-£10 per hr, 4wks paid annual leave pro rata.

Please contact Lyminge Parish Council on 01303 862184 to receive a full job description, or send a written letter of interest and full CV to the Council at Dane Rise, Dog Kennel Lane, Lyminge, Kent CT18 8ER

Or via email to lymingepc@btinternet.com

Lyminge Village Hall

At the heart of our busy community the Village Hall offers an excellent venue for up to 200 people and can meet a variety of requirements with its small Committee Room, larger Club Room and the Main Hall with servery and large stage. We have invested heavily during 2008 with a storage extension completed plus new Ladies toilets. With the full stage now available concerts and bands can be accepted. With excellent parking, kitchen facilities and plenty of tables and chairs the Village Hall makes a great place for larger celebrations or charity events. Price example: Friday or Saturday evening £50.00

For full price details and availability just give Jacqui Storey a call on 862044

LYMINGE METHODIST CHURCH HALL HIRE

Hall

1 June to 30 September £5.50 per hour
£19 per 4 hour session £35.50 full day
1 October to 31 May £8 per hour
£26.50 per 4 hour session £46.50 full day
(includes heating)

Parlour

£5.00 per hour all year with use of
Electric over heaters if required

Overnight stays

1 June to 30 September £33
1 October to 31 May £44
(Including heating)

For any enquiries please 'phone 07971 722401

Lyminge Pre-School



'Partnership with parents and carers is outstanding' Ofsted (Oct 2007).

We are a well established pre-school with committed, enthusiastic and friendly staff passionate about providing excellent childcare. We welcome children from all the surrounding villages and towns, offering a breakfast club together with a range of sessions to suit your needs. Located in the village hall we have a fabulous outdoor play area together with spacious indoor facilities. To register your child and find out more please call 01303 863149/01303 862634. Alternatively visit our website www.lymingepreschool.org.uk or email admin@lymingepreschool.org.uk

ETCHINGHILL VILLAGE HALL HIRE FEES

Occasional Users

Standard weekday rates (08h30 to 23h00)
Hourly rate – up to 4 hours £7.00
1 Session – 4 continuous hours £21.00
2 Sessions – 8 continuous hours £42.00
All-day rate £70.00

Weekend rates (08h30 – 22h00 Sundays) will be £10.00, £30.00, £60.00 and £100.00 respectively

Discounted rates are available for **Etchinghill Residents** who are occasional hirers and for **Regular Users** after 12 months' hiring.

The Committee Room costs £6.00 per session for **Regular Hirers**, £6.00 per hour for **Non-Residents** and £5.00 per hour for **Residents**.

All-day hire for **Weddings, Banquets and Commercial Functions:**

£100.00 for Residents

£200.00 for non-Residents.

For bookings and enquiries, please contact Eileen on **01303 862832**

RHODES MINNIS VILLAGE HALL

Are you looking for a hall in which to hold Practice sessions, private party/function or Meeting?

Rhodes Minnis Village Hall has the capacity to take parties of up to 100 and has kitchen facilities at no extra cost.

Rates:

Sun – Fri £14.00 per session. £34.00 per day
Sat - £20.00 per session. £27.00 evening session
£55.00 per full day.

Session Times:

AM session 8.30am – 12.30pm
PM session 1.30pm – 5.30pm
Evening Session 6.00pm – 11.45pm

A £25.00 returnable deposit is payable in advance. Electricity will be charged at 18p per unit. Regular users will be given a special reduced rate.

**For details contact Mick or Dorothy Athow on
01303 862616**

Sibton Park Cricket Pavilion Club

Having a party? Need a local venue?
Why not take advantage of Sibton Park Cricket Club's lovely pavilion?

We have a bar with club price drinks & friendly efficient staff.

There is capacity for up to 100 guests. For further information or to make a booking please

Contact Lesley Kirk, Tel: 01303 862366



LYMINGE HANDBELLS

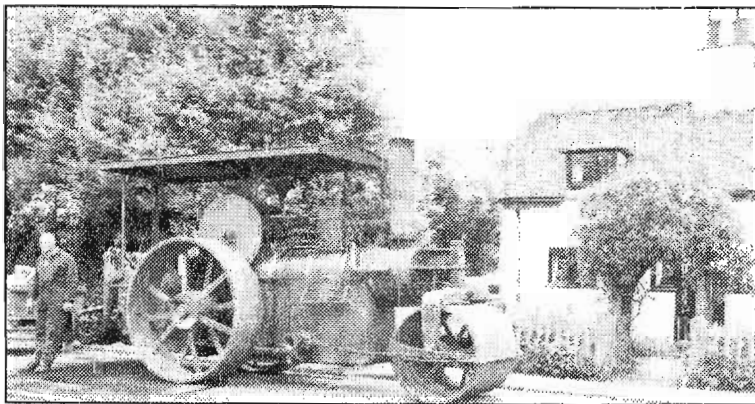


The Lyminge Handbell ringers were pleased to play on Lyminge Day and have bookings at other local events to look forward to. If you have a special event this summer, where the sound of traditional hand bells will add to your celebration, why not consider Lyminge Handbells? We have a large selection of popular and classical music for all occasions. All we need is a large table, room for up to 10 players and a donation of at least £40 for our charity, the Pilgrims Hospice. A contribution to travelling costs is asked for if bookings are at locations more than 5 miles from Lyminge. Weekends and evenings only please and plenty of advance notice.

To request a booking please speak to Ro Edmond on 863201

Out and About

A Selection of the photos received of events that have taken place in the last few weeks



On the way home from the Sellindge Steam Special this engine stopped briefly in Lyminge to take on water outside Lollipops in Canterbury Road.



More entertainment at the Lyminge Primary School Fete from Mr. Rice's band "Risk Averse" which closed the event.



Hawkinge Flyers entertaining the crowd at Lyminge Primary School Fete.

(www.freewebs.com/hawkinge_flyers)



THE MAD MIDSUMMER QUIZ

at Lyminge Village Hall

'Assorted Nuts' were the winners and 'Dudheads' took home the booby prize!



Should we have played the Joker on that round?

If you have any photos of your group in action or a local event and can add a few words about it, please call 862328. There is no charge for entries in Out & About, but space is limited!

*Garden Safari pictures next month AND don't forget more **Ghost Stories** please!*

China China

*Eat As Much
As You Like.*

Sun - Thu £13.95
Fri & Sat £14.95
Holon 10 Days £8.00

01303 863288



LYMINGE HARDWARE

4 Station Road, Lyminge. **01303 862932**
Hardware, DIY, Calor Gas, Wood and Timber cut to size, Paint, Wild Bird Food, Plants, Plumbing, Electrical, Salt for Dishwashers and Water Softeners, Building Sand, etc.
The list goes on and on, please call in and see us.

Personal Computing

For straightforward I.T. advice, solutions and training

Contact:

Steve Ashman
862869

sra@ashman-consulting.co.uk

Auto Economy Centre

**Fully equipped Mechanical Repair & Service Centre
with the latest diagnostic equipment**

01303 863656

**Orchard Garage, Canterbury Rd, Etchinghill
www.autoeconomycentre.com**

N.P.C. Domestic Services

Service and Repair of washing machines, tumble driers, dish washers, cleaners and small electrical work

For a prompt and friendly service

**Telephone Neil Collard on 248887
Mobile 07798 716044**

Etchinghill Golf, Canterbury Road, Etchinghill

Lunches served seven days a week, open to the public. Every Sunday we run a carvery from £8.95 (special prices for children).
We also accommodate weddings, parties and christenings. New all inclusive wedding pack @ £35.00 to include drinks on arrival, three course wedding breakfast, wine at the table, sparkling wine for the toast, evening disco and evening buffet for your day time guests.
Etchinghill is part of Pentland Golf Group, also at Boughton, Faversham and Austin Lodge, Dartford.
All enquiries telephone 01303 863863 or email deb@pentlandgolf.co.uk
www.pentlandgolf.co.uk

Mark Beer

Landscaping – Groundwork – Trenching
Patis – Paving – Decking – Driveways
Sand Schools – Drainage
Mini Digger Hire – Self Drive or Operated
CITB Registered – Fully Insured – 20 years experience
Phone/Fax 863893 or 07949 291742.

Regional Specialists **OPEN 7 DAYS**
in Village & Country
Property for East Kent



135 Canterbury Road Bank Buildings
Hawkinge High Street, Elham
01303 892800 01303 840422
www.browncountryproperty.co.uk
info@browncountryproperty.co.uk

Browns
Chartered Surveyors & Estate Agents

iphe **D. SCRIVENS**
PLUMBING & HEATING
Oil Fired Boiler Installation,
Commissioning, Service and Maintenance.
Unvented Hot Water Systems Solar Water Heating
Central Heating · Water Softeners – Bathrooms Showers En suites
Approved 'Aqualisa' Installer
WATER INDUSTRY 'APPROVED PLUMBER'
FULLY INSURED
Mobile: 07810 897076
Email: scrivensplumbing@aol.com



City & Guilds
Qualified

K & M LEWSEY LTD
PLUMBING & HEATING ENGINEERS
ESTABLISHED 1969
REGISTERED PLUMBER
GAS ACOP APPROVED ENGINEERS
TELEPHONE: 01303 264535
MANNED OFFICE,
DAYTIME MONDAY TO FRIDAY



KENT TEST TUTORING

Are you in need of help with Kent Test preparation?

Kent Test and Maths tutoring sessions.

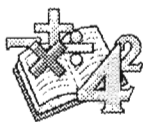
Available throughout July, August and September.

One-on-one tutoring sessions in Lyminge.

For further details contact Charlotte Frost.

Telephone: 01303 863717

Email: graham.frost1@btinternet.com



Key Spaces

Kitchens & Bathrooms

Quality kitchen and bathroom specialists.

We offer a first class service to all our customers for design, installation and beyond.

www.keyspaces.co.uk

Tel: 01233 501 591

Email: info@keyspaces.co.uk

Mersham le-Hatch business village, Hythe Road, Ashford, TN25 5NH

YOGA & RELAXATION CLASSES

Local friendly adult classes suitable for all abilities
Mon 7pm - Rhodes Minnis Village Hall
Tues 10am - St Paul's Church Hall, Sandgate
Wed 10am & Thur 7pm - Elham Village Hall
Thur 10am - Etchinghill Village Hall
Tel: Chris Yorke on 01303 863196
or email yorkes@yoga4freedom.co.uk
For more info visit www.yoga4freedom.co.uk

Mick Johnson

Plumber

30 YEARS EXPERIENCE
Telephone 862897



Wholistic Works, Podiatry & Complementary Health Clinic

Tel: 01303 863359 e-mail: info@wholistic-works.co.uk
2 Station Road, Lyminge, Folkestone, CT18

Treatments available include a full range of Podiatric services by Mrs Lyle Arnold B.Sc. (see www.wholisticworksclinic.co.uk for more details) and a range of Complementary Health Therapies including; Aromatherapy, Hopi Candles, Reflexology and Reiki.

An Osteopathic clinic with Mr Adam Price B.Sc. (Ost), is also available on Thursdays. Mrs Arnold and Mr Price are also at 26 Cheriton Gardens, Folkestone.

Consultations by appointment only

HILLARYS BLINDS LTD

For your Office Home or Conservatory

- ❖ unbeatable choice
- ❖ expert advice
- ❖ free quotation
- ❖ select at home
- ❖ quoted price includes fitting
- ❖ daytime, evening or weekend appointments

GORDON BOUCHER
01303 862949



HONEST JOHN NEWING

Portable Electrical Appliance Testing (PAT). DIY Handyman, General

Maintenance and Gardening. Reliable & Trustworthy. No Job Too Small, call for a free quote 01303 862873 or 07758 326824

Email: johnspattesting@googlemail.com

COUNTRY FARE

CATERING SERVICES

Country Weddings, Christenings & All Family Gatherings
Corporate Lunches, Seasonal Parties & Celebration Cakes

Contact Sally Burr

Telephone; 01303 863103, Mobile; 07814 610995,

Email; info@countryfare.plus.com

Manor Veterinary Clinic

Manor Veterinary Clinic has moved to:
Shearway Road, Shearway Business Park, CT19 4RH

01303 273203

New premises - same care

Lyminge surgery: Methodist Church Hall - Mon, Wed & Fri.

STERRY FUNERAL SERVICE

CLIVE STERRY OFFERS A LOCAL FAMILY OWNED FUNERAL SERVICE

Help and advice 24 hours a day

Traditional and Green funerals

Home visits

Pre-paid Funeral Plans & Memorials

Always at competitive prices

Call 272525, 93 Cheriton High Street

Also Lyminge 862540 after 6pm

The Ovenscleaners

Kent's leading Domestic Oven Cleaners

Non Caustic, Fresh solutions every clean

Ovens, Ranges & AGA's

Hobs, Extractors, Microwaves & BBQ's

Tel: 0800 328 9342 for your free quote

Local Representative Geoff Cheshire

Red Dragon I.T Ltd.

'Computer Specialists'

We offer the 'One Stop Shop' for all your computer requirements.

We now offer training in groups and one to one.

Our services include repairs, bespoke PCs, maintenance, peripherals, consumables and web design.

www.rdit.co.uk 01303 723456

LYMINGE FOOD AND WINE -- 01303 862225

We are offering you...

Household goods * News & Magazines * Wines & Spirits
Beers * Soft drinks & Confectionery * Bakery * Chilled &
Frozen Food * Flowers * Fresh Fruit & Vegetables * Cash
Machine * Western Union Money Transfer

Pay Point for (Gas, Electricity, Council Rental, TV Licence,
Congestion Charge, Holidays, Mobile Top-up).

We are always running offers.

JUBILEE FARM SHOP

Rhodes Minnis, Telephone 862317

Organic eggs. Fresh fruit and vegetables.

High quality meat at reasonable prices.

Jubilee organic Aberdeen Angus beef.

Jubilee Organic Lamb (whole or half to order)

Large range of organic produce.

OPEN 9am-5pm Mon - Sat.

DILTON

MINI SKIP HIRE

Ballast, Hardcore, Sand and Topsoil Supplied

REGISTERED WASTE CARRIER

Telephone: 812448 or

Mobile 07799 433754



M. J. Athow

BUILDER & DECORATOR, EST. 1965

GENERAL MAINTENANCE

Member of the Federation of Small Businesses

Qualified and Insured. Free estimates

Telephone 862616 Mobile 07976 306665

Email: m.j.athow@live.co.uk

Website: <http://mjathow.spaces.live.com>

AIR LINK CARS

(You pack up, we pick up)



Airport, Seaport & Long Distance Travel Specialists.

The Family Run Business where service really counts

Estate cars and People Carriers

Fixed price 24hrs a day. No extras.

Written Confirmation of booking.

For the Easy Airport Link, Think Air link!

01303 862704 - 07753 760897

WILL WOODBRIDGE

Carpenter/small works builder

With years of experience

Telephone 01303 863062

HAXTONS

TOWN AND COUNTRY ESATE AGENTS

8 Station Road, Lyminge

TEL: 01303 863393

www.haxtons.co.uk

Specialising in Village and country properties

Free no obligation valuations

OPEN 7 DAYS



SEATHWAITE BOARDING CATTERY LTD.

Supporting Rhodes Minnis Cat Sanctuary

GREEN LANE, RHODES MINNIS, CT4 6XU

TEL: 01303 862243 (Registered charity 262245)



ONLY CATS BOARDED, IN QUIET COUNTRY LOCATION

Individually heated chalets. Single cats £5.50 per day, a reduction for 2 or more cats. All cats boarded with us must have current vaccinations against cat flu & feline enteritis.

All profits from the boarding cattery go to support homeless cats in the Sanctuary.

RHODES MINNIS CAT SANCTUARY

has a wide variety of cats available to caring homes.

Alan J. Boughton

Small Works Builder

All aspects of building work undertaken

40 years experience

Telephone: 862075

BRIAN HEWETT

Painter and Decorator

Property Maintenance

Telephone for free quotation and advice without obligation

01303 862150

I have been painting and decorating for 45 years,
and still enjoy it!

Auto Tyre Centre

Fully equipped tyre centre with laser wheel alignment

01303 863656

Tyres at prices that are hard to beat

Orchard Garage, Canterbury Rd, Etchinghill

www.autotyrecentre.com

R. B. BUILDING SERVICES

General Maintenance, Painting, Carpentry, Plumbing

Upvc fascias and guttering

Fully Insured

For a Free quote please ring Roy Bowling on

Home Tel: 01303 863267 – Mobile 07947 132319

MAXTED CONSTRUCTION

We are specialists in House Refurbishments, Extensions, Electrical works, Plumbing, Roofing, Carpentry, Patios, Driveways, Conservatory Installations and most forms of Property Maintenance.

Contact us now for a free no obligation Estimate on:

Freephone: 0800 083 6469, Tel: 01227 709606

Email: office@maxtedconstruction.co.uk

or contact us via our website www.maxtedconstruction.co.uk

T. M. McIntyre Builders

All building projects undertaken

Residential & Commercial

Local Family Business

Established for over 20 years

Please call for a friendly and free no obligation estimate

Telephone Paul McIntyre 01303 863 257

SCRUBBERS - Est. 1988

THE HOME AND COMMERCIAL CLEANERS
One off, regular or moving day 'Blitz'

Oven cleaning – Ironing
Carpet cleaning and more...
For a friendly and reliable service
Free Estimates Tel: 01303 862249



COSYBLAN heating Ltd

Riverside Trading Estate West Hythe Road Hythe CT21 4NT
01303 260197

For all types of heating needs - Rayburn range cookers
Plumbing -Central Heating – Multi -fuel stoves
Contact Dennis Huntley on 862343 or
VISIT OUR SHOWROOM
OFTEC & CORGI Registered – Qualified Tradesmen

FRESHLOOK GARDENS

Garden design. Regular lawn mowing service available. General garden work undertaken. Rubbish cleared. Overgrown gardens cleared. Winter pruning and hedge cutting.

For free quotation ring Geoffrey Hogben. KCC registered

Telephone 01303 844680
Mobile 07866 091633

There To Care

Here to make your life easier. We are a company that treats everybody with dignity and respect striving to make a difference to people's lives.

CRB checked Companionship via outings
Insured Assistance with light meals
First aid qualified Shopping
NVQ qualified Hospital appointments etc

Ross Butcher: 01303 862410 or 07967 342226

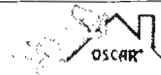
Eddie Brooks: 07766 196217 Theretocare@hotmail.co.uk

www.PresentingElectrical.co.uk

Industrial - Commercial - Domestic

Electrical work – 17th Edition Certified (BS7671: 2008)
Installation, Fault Finding, Inspection & Test, PATs
DIY SOS & Emergency call out – FREE QUOTATIONS

Call - Local: 0845 224 6438 Mobile: 07974 411224



OSCAR PET FOODS

QUALITY PET FOODS AT VALUE FOR MONEY PRICES
DIET TO SUIT ALL DOGS
WILDBIRD FOOD AND PEANUTS
FREE HOME DELIVERY

01303 862200

WWW.OSCARS.CO.UK

Wilco Plumbing & Heating **Central Heating Installations & Repairs**

Gas & Oil Boiler repairs & replacements
LPG, Solar & Unvented hot water specialist.
Landlords Gas safety Inspections
Local Experienced Engineer
Registered with the Institute of Plumbing
Gas Safe Registered
KCC Trading Standards Approved

01303 862173 07860 452640

Jackson Plumbing

Property Maintenance

Complete bathrooms and tiling
No job too small. Special rates for OAP's.

Telephone: Home/evening 270691

or day time 07773 089398

(please note new mobile number)

BEAVER BUILDERS

Jon Daughters

Conversions	Driveways	Plastering
Roofing	Patios	Decorating
Carpentry	Drains	Plumbing

FREE ESTIMATES

Tel: 01303 863371

SIX MILE GARAGE LTD

Stone Street, Stelling Minnis, Canterbury, Kent CT4 6DN

- Car and light commercial servicing
 - Class 4 and 7 mots and repairs
 - Car and light commercial accident repair centre (insurance approved)
 - Diagnostics bay with latest equipment
 - Tyre bay with four wheel alignment and balancing
 - Air conditioning servicing
- Tel. 01227 709214 or 01227 709491, Fax 01227 709331
E-mail office@sixmilegarage.co.uk,

Total garden care for all your needs

TIM MILLETT

Grass Maintenance	General Gardening
Fencing Repairs & New Installations	Small & Medium Size Tree Work
Turfing	Hard & Soft Landscaping
Free Estimates	Fully Insured

01303 863676

Mob: 07752 880583

Email: info@tmhorticulture.co.uk

T. M. GRIGGS

Tree Felling and Maintenance

Telephone 01303 863103

Mobile 07854 098 395

Fully Insured Free Quotations